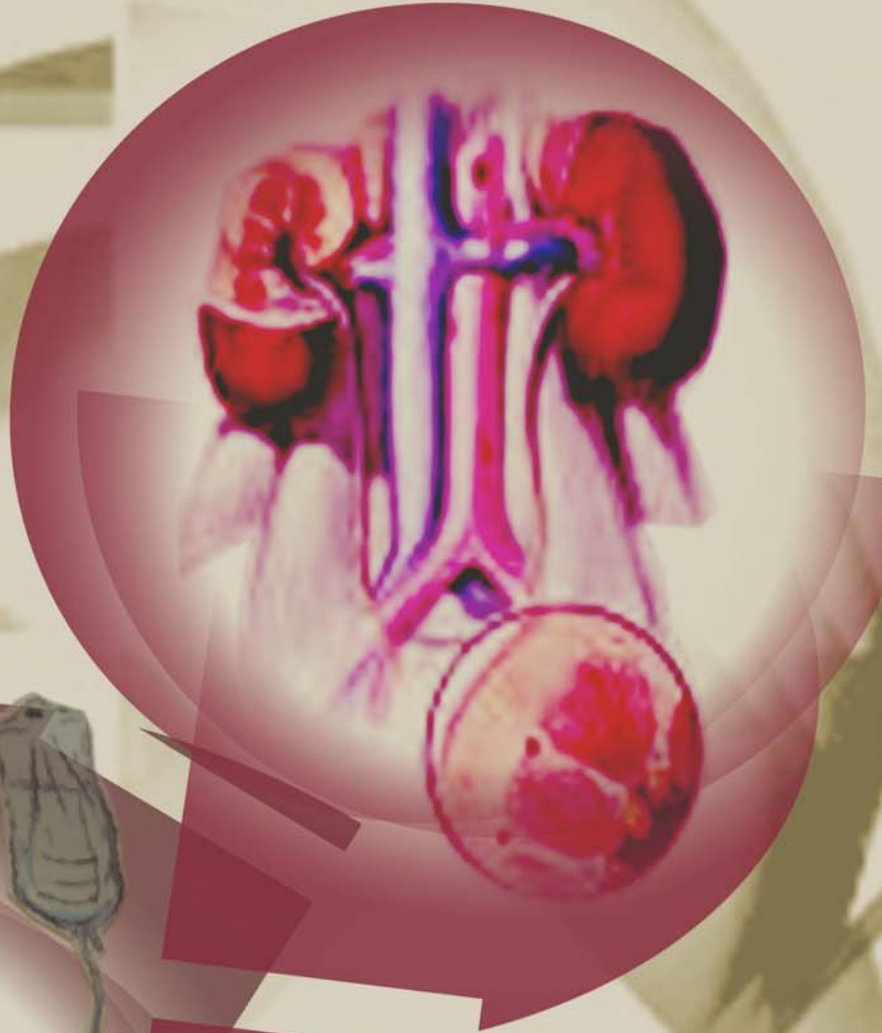


DIRECTORY OF DIALYSIS CENTRES IN MALAYSIA 2004

National Renal
Registry



**Directory of
Dialysis Centres
i n M A L A Y S I A
2 0 0 4**

NATIONAL RENAL REGISTRY

^c/o Disease and Treatment Registry Unit

2nd Floor, 29 & 31 Jalan Ipoh

51200 Kuala Lumpur

Malaysia

Tel.: (603) 4045 8636

Fax: (603) 4045 1252

e-mail: nrr@crc.gov.my

Web site: <http://www.crc.gov.my/nrr>

Published by:

National Renal Registry (NRR)
C/o Disease and Treatment Registry Units
2nd Floor, 29 & 31 Jalan Ipoh
51200 Kuala Lumpur
Malaysia

Tel.: (603) 4045 8636

Fax: (603) 4045 1252

Email: nrr@crc.gov.my

Website: <http://www.crc.gov.my/nrr>

Electronic version

Electronic version of this directory can be downloaded at <http://www.crc.gov.my/nrr>

Renal Registry Unit, CRC

Lee Day Guat

Mardhiah Arifin

Nor Azliana Ramli

Disease and Treatment Registry Unit, CRC

Dr. Jamaiah Haniff,

Head of DTRU

Biometrics Unit, CRC

Celine Tsai Pao Chien,

Information Security Officer

Kevin Ng Hong Heng,

Network Administrator

Adlan Abdul Rahman,

Assistant Network Administrator

Lim Jie Ying,

Database Administrator

Patrick Lum,

Webmaster

Sebastian Thoo,

Programmer

Teh Poh Geok,

Statistician

DIRECTORY CONTENTS

Page

NRR Advisory Committee

v

About the National Renal Registry

vi

Directory of Haemodialysis Centres in Malaysia

1 ~ 32

Directory of CAPD Centres in Malaysia

33 ~ 35

Directory of Renal Transplant Follow-up Centres in Malaysia

36 ~ 42

Listing of Centres by Name order

I ~ V

Listing of Centres by Sector

VI ~ XI

Listing of Centres by State

XII ~ XVI

ABBREVIATIONS

CAPD	Continuous Ambulatory Peritoneal Dialysis
CRA	Clinical Registry Assistant
CRC	Clinical Research Centre
CRM	Clinical Registry Manager
DAMAN	Dialysis Association Medical Assistant and Nurses
ESRD	End Stage Renal Disease
MSN	Malaysian Society of Nephrology
NRR	National Renal Registry
RRT	Renal replacement therapy
RRU	Renal Registry Unit
TX	Transplant

GLOSSARY

Advisory Committee	A board, council, panel or group thereof that is established by the sponsors of the registry to oversee the operations of the registry.
Advisory Committee Member	An individual appointed to serve in the Advisory Committee. Members may have relevant expertise and/or represent the interest of SDP, users or donor.
Collaborating Unit	The organization designated by the Advisory Committee to provide the functional capacity to support the registry operations. This includes the collection, and analysis of data, and feedback of information to users. The unit is typically staffed by CRM, CRA, epidemiologist, statistician, information technology personnel and other supporting staff.
Source data producer	The individuals or institutions that report the required data to the registry

NRR ADVISORY COMMITTEE MEMBERS
2002 to 2004

CHAIRMAN:

Dato' Dr. Zaki Morad B Mohd Zaher

MEMBERS:

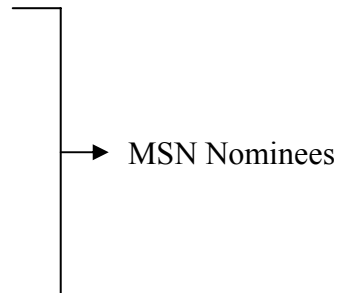
Dr. Lim Yam Ngo

Dr. T. Thiruventhiran

Dr. Tan Hee Wu

Professor Dr. Tan Si Yan

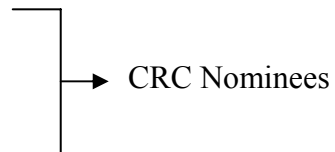
Dr. Wong Hin Seng



Dr. Lim Teck Onn

Dr. Jamaiyah Haniff

Ms. Lee Day Guat



Hj. Mohd Harith Fadzella

Ms. Asma Abdullah



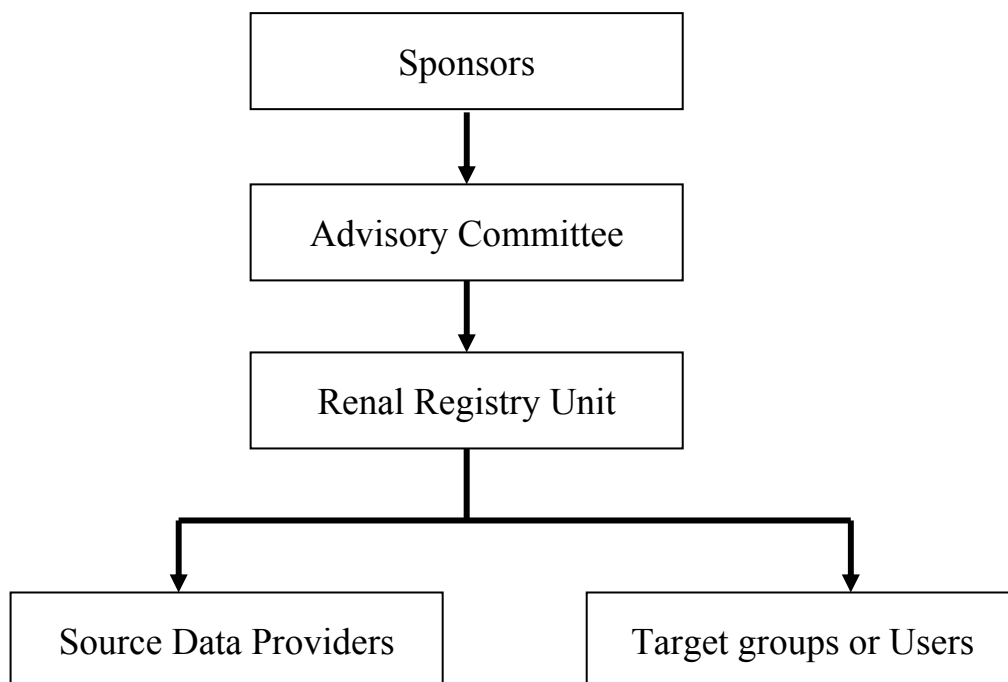
About the National Renal Registry

The National Renal Registry (NRR) has its origin in the Dialysis and Transplant Registry established by the Department of Nephrology in 1992. The NRR sponsors are the Malaysian Society of Nephrology (MSN) and the Clinical Research Centre (CRC) of the Ministry of Health. A Renal Registry Unit was set up under the Disease and Treatment Registry Unit of CRC as the collaborating Unit.

The objectives of NRR are to:

1. Determine the disease burden attributable to End Stage Renal Disease (ESRD), and its geographic and temporal trends in Malaysia.
2. Determine the outcomes, and factors influencing outcomes of RRT.
3. Evaluate RRT program.
4. Stimulate and facilitate research on RRT and ESRD.
5. Maintain the national renal transplant waiting list.

The reorganized NRR is as follows:



Sponsors.

MSN and CRC are the main sponsors of the NRR.

Advisory Committee.

This is the committee established by the sponsors to oversee the operations of the registry. Interested parties including source data producers, Renal Registry Unit and target groups or users are represented on this committee.

Renal Registry Unit (RRU), CRC

The collection, and analysis of data, and feedback of information are performed in a single centre referred to as RRU. This is a sophisticated unit staffed by epidemiologist, statistician, information technology personnel and other supporting staff.

Source Data Producers

These are the dialysis and transplant centres who collect the required data. It is the most critical and yet difficult element of the system. It has to be systematic and uniform, and producers of source data need to be trained and motivated to ensure high data quality.

In addition, the NRR database will be linked to the National Registration mortality database.

Users or Target groups

These are the individuals or institutions to whom the regular registry reports are addressed. It is their needs for information to assist in the planning and implementing disease treatment, control and prevention activity that justify the investment in registry. They include:

1. Renal community
2. RRT provider
3. Public health practitioner
4. Decision maker in various government and non-government agencies who have responsibilities for any aspects of ESRD treatment, prevention and control
5. Researcher with an interest in ESRD and RRT.
6. The press and the public.