

## **CHAPTER 4**

# **QUALITY OF LIFE AND REHABILITATION OUTCOMES OF DIALYSIS PATIENTS**

Liu Wen Jiun  
Alinda Chiu Sze Fung  
Chew Thian Fook  
Zaki Morad B Mohd Zaher

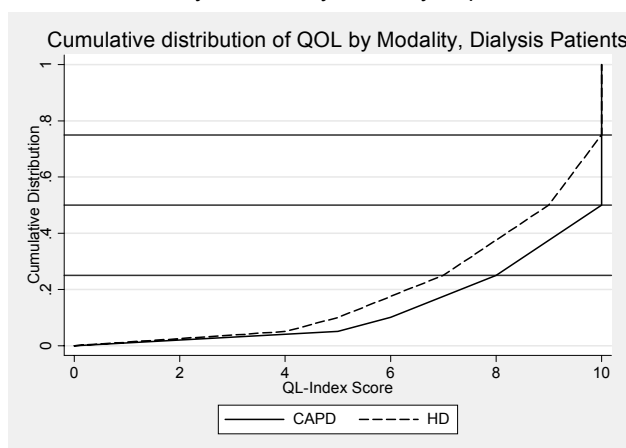
**A: Quality of Life on Dialysis**

11080 patients who entered dialysis between 1997-2004 were analysed. 9224 HD patients and 1856 CAPD patients reported median quality of life (QoL) index score of 9 and 10 respectively (Table 4.1 Figure 4.1)

**Table 4.1:** Cumulative distribution of QoL-Index score in relation to Dialysis modality, All Dialysis patients 1997-2004

Dialysis modality	CAPD	HD
Number of patients	1856	9224
Centile		
0	0	0
0.05	5	4
0.10	6	5
0.25 (LQ)	8	7
0.5 (median)	10	9
0.75 (UQ)	10	10
0.90	10	10
0.95	10	10
1	10	10

**Figure 4.1:** Cumulative distribution of QoL-Index score in relation to Dialysis modality, All Dialysis patients

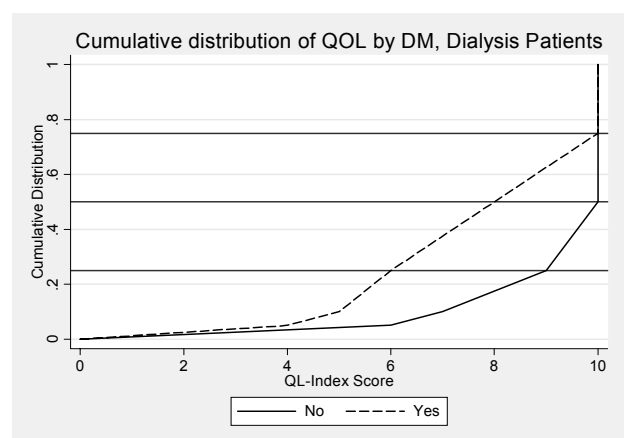


Diabetics have a lower median QOL index score (8 versus 10) than nondiabetics (Table 4.2 and Figure 4.2) whilst there was no difference seen between gender (Table 4.3 and Figure 4.3).

**Table 4.2:** Cumulative distribution of QoL-Index score in relation to Diabetes mellitus, All Dialysis patients 1997-2004

Diabetes mellitus	No	Yes
Number of patients	6280	4800
Centile		
0	0	0
0.05	6	4
0.10	7	5
0.25 (LQ)	9	6
0.5 (median)	10	8
0.75 (UQ)	10	10
0.90	10	10
0.95	10	10
1	10	10

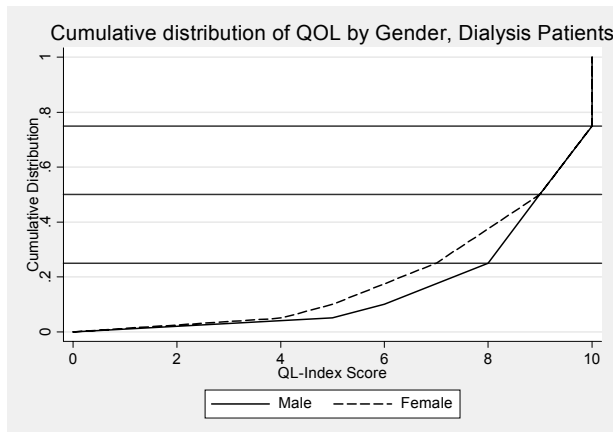
**Figure 4.2:** Cumulative distribution of QoL-Index score in relation to Diabetes mellitus, All Dialysis patients 1997-2004



**Table 4.3:** Cumulative distribution of QoL-Index score in relation to Gender, All Dialysis patients 1997-2004

Gender	Male	Female
Number of patients	6143	4937
Centile		
0	0	0
0.05	5	4
0.10	6	5
0.25 (LQ)	8	7
0.5 (median)	9	9
0.75 (UQ)	10	10
0.90	10	10
0.95	10	10
1	10	10

**Figure 4.3:** Cumulative distribution of QoL-Index score in relation to Gender, All Dialysis patients 1997-2004

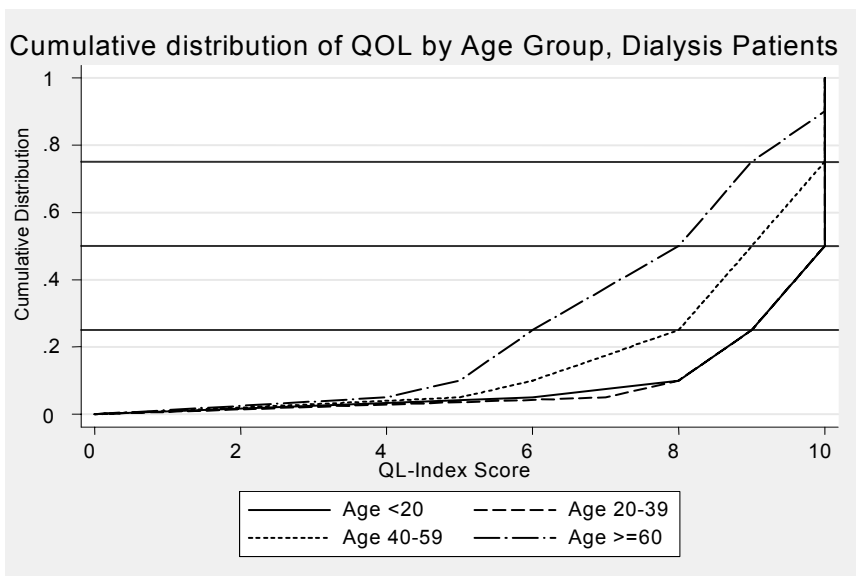


There was a trend of lower median QoL index score being associated with older dialysis patients (Table 4.4 and Figure 4.4).

**Table 4.4:** Cumulative distribution of QoL-Index score in relation to Age, All Dialysis patients 1997-2004

Age group (years)	<20	20-39	40-59	>=60
Number of patients	473	2079	5415	3113
Centile				
0	0	0	0	0
0.05	6	7	5	4
0.10	8	8	6	5
0.25 (LQ)	9	9	8	6
0.5 (median)	10	10	9	8
0.75 (UQ)	10	10	10	9
0.90	10	10	10	10
0.95	10	10	10	10
1	10	10	10	10

**Figure 4.4:** Cumulative distribution of QoL-Index score in relation to Age, All Dialysis patients 1997-2004





## B : Work Related Rehabilitation

Analysis was done on HD patients (n=3831) and CAPD patients (n=601) who entered dialysis between 1997 –2004 (Table 4.7). Only patients who were working for pay and those who were unable to work for pay due to health reasons were included. The proportion of patients on employment were comparable between the two modalities (HD 72% vs CAPD 74%)

**Table 4.7:** Work related rehabilitation in relation to Modality, Dialysis patients 1997-2004

Modality	CAPD		HD	
	N	%	N	%
Number of patients	601		3831	
Able to return for Full or Part time for pay	443	74	2751	72
Unable to work for pay*	158	26	1080	28

Amongst HD patients, the proportion on employment decreased with shorter HD duration; a reflection of increasing proportion of patients with poor health. (Table 4.8). There was no obvious trend in work related rehabilitation seen amongst the CAPD cohort (Table 4.9)

**Table 4.8:** Work related rehabilitation in relation to Year of Entry, HD patients 1997-2004

Year	1997		1998		1999		2000		2001		2002		2003		2004	
	N	%	N	%	N	%	N	%	N	%	N	%	N	%	N	%
Number of patients	362		402		493		530		524		568		521		431	
Able to return for Full or Part time for pay	298	82	317	79	376	76	406	77	359	69	404	71	357	69	234	54
Unable to work for pay*	64	18	85	21	117	24	124	23	165	31	164	29	164	31	197	46

\* Exclude patients unable to find employment for non-health related reasons

**Table 4.9:** Work related rehabilitation in relation to Year of Entry, CAPD patients 1997-2004

Year	1997		1998		1999		2000		2001		2002		2003		2004	
	N	%	N	%	N	%	N	%	N	%	N	%	N	%	N	%
Number of patients	70		38		47		61		79		111		126		69	
Able to return for Full or Part time for pay	51	73	31	82	35	74	40	66	65	82	84	76	90	71	47	68
Unable to work for pay*	19	27	7	18	12	26	21	34	14	18	27	24	36	29	22	32

\* Exclude patients unable to find employment for non-health related reasons