

CHAPTER 8

**BLOOD PRESSURE CONTROL
AND DYSLIPIDAEMIA**

S Prasad Menon
Lee Wan Tin

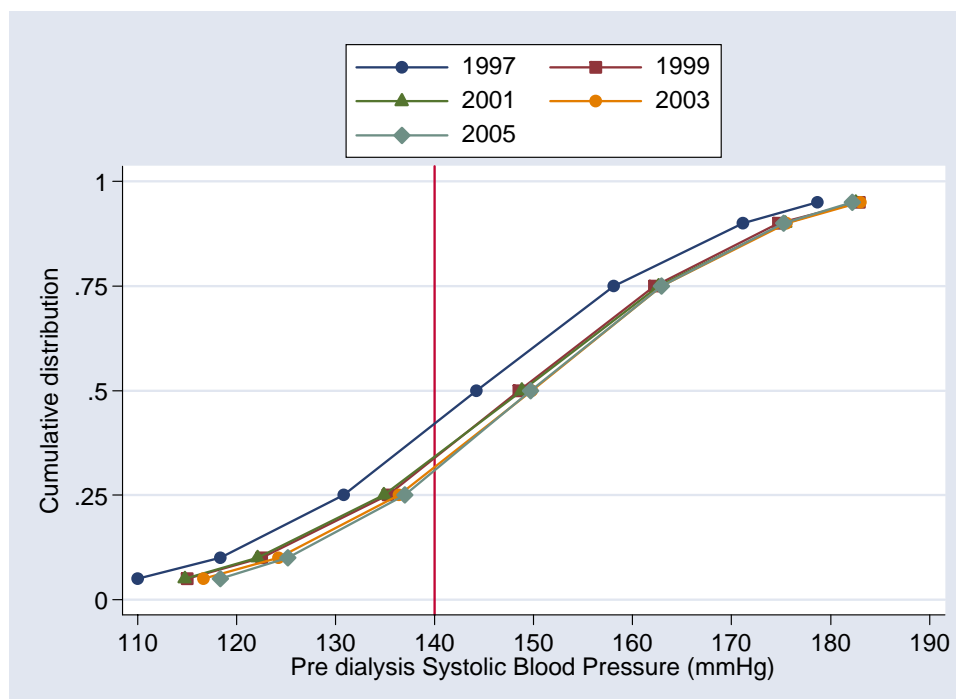
8.1: BLOOD PRESSURE CONTROL ON DIALYSIS

In 2005, systolic BP in haemodialysis patients remained high with mean and median predialysis systolic BP at 149.9 mmHg and 149.7 mmHg respectively (Table and figure 8.1.1). The proportion of HD patients with predialysis systolic BP < 140 mmHg remained low at 30%, similar to the 2004 figures.

Table 8.1.1: Distribution of Pre dialysis Systolic Blood Pressure, HD patients 1997-2005

Year	No. of subjects	Mean	SD	Median	LQ	UQ	% patients <120 mmHg	% patients 120- <140 mmHg	% patients 140- <160 mmHg	% patients 160- <180 mmHg	% patients ≥180 mmHg
1997	1659	144.5	20.8	144.2	130.8	158.1	11	30	35	19	4
1998	2108	146	20.5	146.7	133.2	159.2	10	27	39	19	5
1999	2965	148.7	20.8	148.5	135.3	162.2	8	25	38	23	6
2000	4310	148	20.6	147.8	134.8	161.7	9	25	38	23	6
2001	5147	148.8	20.9	148.8	134.9	162.6	8	25	37	23	7
2002	5911	149.2	20.6	149	135.8	163.3	8	24	38	24	6
2003	6839	149.7	20.2	149.8	136.4	162.9	7	24	39	23	7
2004	7937	149.7	20	150	136.6	163.1	7	23	39	25	6
2005	9016	149.9	19.5	149.7	137	162.9	6	24	40	24	6

Figure 8.1.1: Cumulative distribution of Pre dialysis Systolic Blood Pressure, HD patients 1997-2005

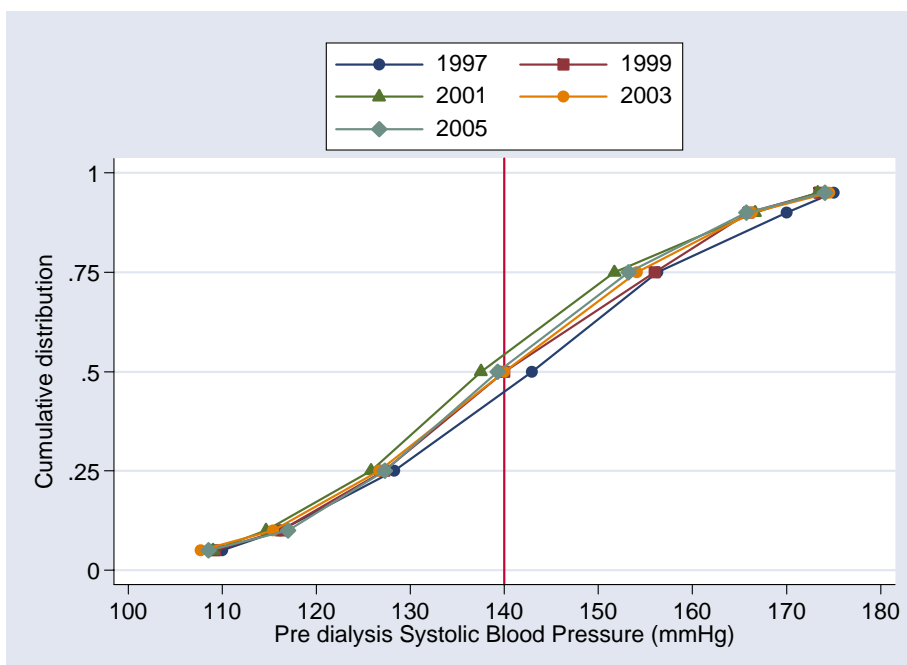


Compared to haemodialysis patients, systolic BP in CAPD patients was better controlled with mean and median predialysis systolic BP at 140.4 mmHg and 139.3 mmHg respectively (Table 8.1.2). It is also noted that compared to 2004, the proportion of CAPD patients with prediastolic systolic BP < 140 mmHg has increased from 47% to 51% in 2005.

Table 8.1.2: Distribution of Pre dialysis Systolic Blood Pressure, CAPD patients 1997-2005

Year	No. of subjects	Mean	SD	Median	LQ	UQ	% patients <120 mmHg	% patients 120- <140 mmHg	% patients 140- <160 mmHg	% patients 160- <180 mmHg	% patients ≥180 mmHg
1997	468	142.7	20.3	142.9	128.3	156.3	13	31	37	17	3
1998	519	141	21.2	140	126.4	157.5	16	34	29	18	3
1999	576	141	19.8	140	127.2	156	14	35	34	15	2
2000	638	137.2	20.4	136.1	123.3	150	18	39	29	13	2
2001	739	139	20.2	137.5	125.8	151.7	16	38	30	13	3
2002	843	139.8	20.5	140	127.1	151.8	14	36	34	12	4
2003	1156	140.5	20.1	140	126.7	154.1	15	35	32	15	3
2004	1260	141	19.8	140.9	127.5	154.4	13	34	36	13	3
2005	1350	140.4	20.2	139.3	127.3	153.2	13	38	33	14	3

Figure 8.1.2: Cumulative distribution of Pre dialysis Systolic Blood Pressure, CAPD patients 1997-2005

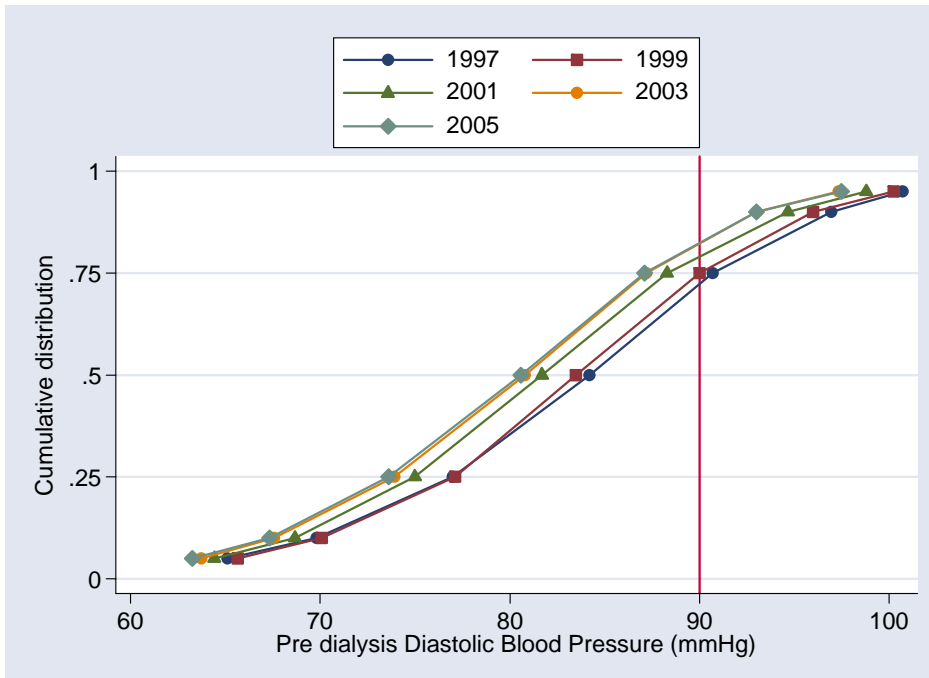


In 2005, predialysis diastolic BP is better controlled than predialysis systolic BP in haemodialysis patients, with mean and median predialysis BP at 80.5 mmHg and 80.6 mmHg respectively (Table 8.1.3). The proportion of HD patients with predialysis diastolic BP < 90 mmHg remained at 47%, similar to 2004 figures. These figures indicate a widening of the pulse pressure. This is consistent with a dialysis population consisting of more elderly and diabetic patients.

Table 8.1.3: Distribution of Pre dialysis Diastolic Blood Pressure, HD patients 1997-2005

Year	No. of subjects	Mean	SD	Median	LQ	UQ	% patients <70 mmHg	% patients 70-<80 mmHg	% patients 80-<90 mmHg	% patients 90-<100 mmHg	% patients ≥100 mmHg
1997	1660	83.7	10.9	84.2	77	90.7	10	23	38	22	6
1998	2108	83.5	10.7	83.9	76.9	90.6	10	24	38	23	5
1999	2965	83.5	10.5	83.5	77.1	90	10	24	40	21	6
2000	4309	82.2	10.4	82.3	75.7	89	11	28	39	18	4
2001	5146	81.6	10.4	81.7	75	88.3	12	30	37	17	4
2002	5907	81.2	10.4	81.3	74.5	88.1	13	30	37	16	3
2003	6837	80.6	10.2	80.8	73.9	87.2	14	32	37	14	3
2004	7935	80.3	10.2	80.3	73.6	86.9	15	33	36	14	3
2005	9016	80.5	10.5	80.6	73.6	87.1	15	32	37	14	3

Figure 8.1.3: Cumulative distribution of Pre dialysis Diastolic Blood Pressure, HD patients 1997-2005

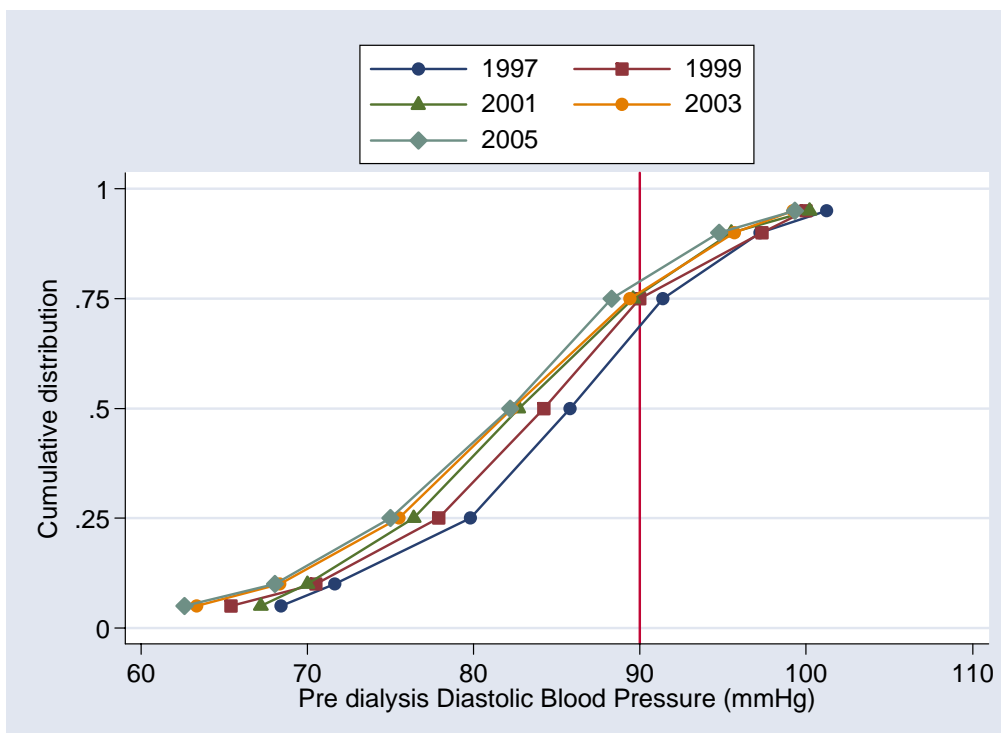


In 2005, diastolic BP control in CAPD patients remained excellent with mean and median predialysis diastolic BP at 80.5 mmHg and 80.4 mmHg respectively (Table 8.1.4). The proportion of CAPD patients with diastolic BP < 90 mmHg is higher than HD patients at 83%.

Table 8.1.4: Distribution of Pre dialysis Diastolic Blood Pressure, CAPD patients 1997-2005

Year	No. of subjects	Mean	SD	Median	LQ	UQ	% patients <70 mmHg	% patients 70-<80 mmHg	% patients 80-<90 mmHg	% patients 90-<100 mmHg	% patients ≥100 mmHg
1997	467	85.3	10.6	85.8	79.8	91.4	6	19	41	26	8
1998	519	84.3	11.3	85	77.1	90.1	8	24	36	24	8
1999	576	84	10.9	84.2	77.9	90	9	20	44	20	7
2000	638	82.9	11	83.3	76.6	89.6	10	24	41	20	5
2001	739	83.1	10.9	82.7	76.4	89.6	9	29	38	18	6
2002	843	82.8	10.8	83.4	76.1	90	11	24	41	21	5
2003	1158	82.2	10.9	82.3	75.5	89.4	12	26	38	19	4
2004	1259	82.2	10.5	83	75.4	89.2	11	28	38	18	4
2005	1350	81.6	10.9	82.2	75	88.3	12	29	40	15	5

Figure 8.1.4: Cumulative distribution of Pre dialysis Diastolic Blood Pressure, CAPD patients 1997-2005



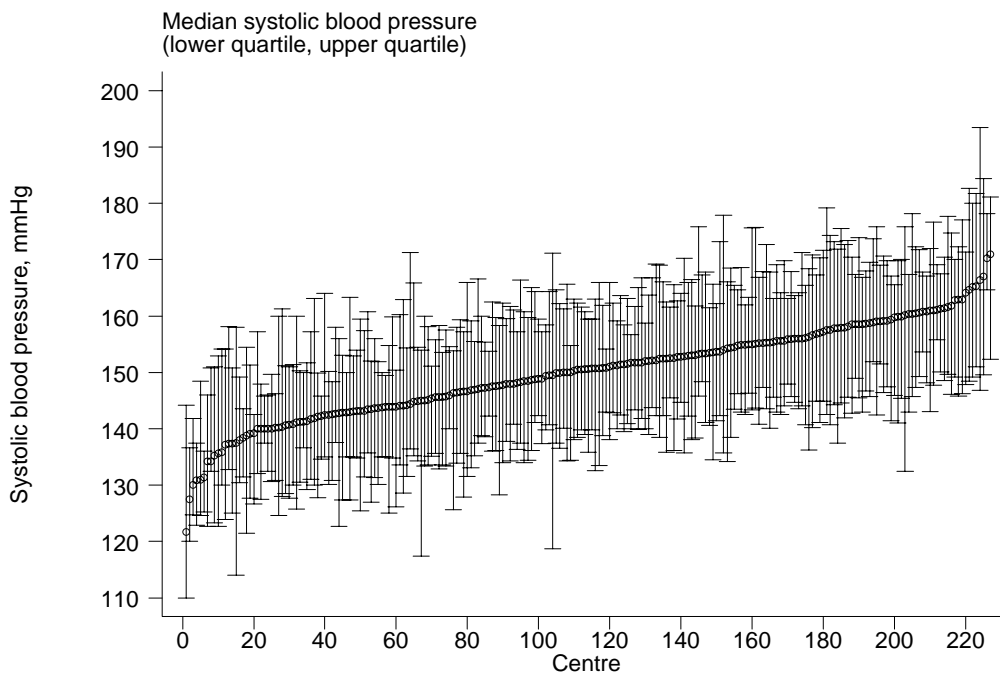
The mild variation in median systolic BP among HD centres in 2005 is similar to previous years (Table 8.1.5).

Table 8.1.5: Variation in BP control among HD centres 2005

(a) Median Systolic blood pressure among HD patients

Year	No. of centres	Min	5th Centile	LQ	Median	UQ	95th Centile	Max
1997	46	119.3	130.4	140	144.9	151.8	158	161.2
1998	49	132.1	135.8	141.3	146.3	151	158.7	159.9
1999	75	133.4	135.5	143.3	148.6	153.8	163.6	167.3
2000	108	130.6	135.8	142.7	147.5	155.3	162.6	180
2001	124	127.9	135.7	142.9	148.5	155	161.9	168.5
2002	148	123.3	136.3	144	149.1	154.6	163	170.9
2003	170	126.7	135.8	144.8	150.4	155.5	162.7	173.7
2004	196	120	136.4	144.2	150.3	155.2	162.5	171
2005	227	121.7	137.2	143.8	150.6	155.9	161.8	171

Figure 8.1.5(a): Variation in median systolic blood pressure among HD patients, HD centres 2005



There is also mild variation in median diastolic BP among HD centres in 2005, similar to previous years (Table 8.1.5).

(b) Median Diastolic blood pressure among HD patients

Year	No. of centres	Min	5th Centile	LQ	Median	UQ	95th Centile	Max
1997	46	70	78.3	81.5	83.6	85.5	88	93.3
1998	49	77.1	78.8	82	83.8	86.7	88.3	90
1999	75	75.3	77	81.7	83.8	85.4	88.8	91.3
2000	108	75.3	76.7	80	82.3	84.4	89.2	94.4
2001	124	74.1	76.2	79.8	81.9	83.8	87.5	91.3
2002	148	71.9	75.3	79.1	81.4	83.8	87.8	101.4
2003	170	73.3	75	78.4	80.9	83.5	86.3	97.5
2004	196	71.7	73.3	78.3	80.9	82.9	86.8	92.8
2005	227	68	73.5	78	80.8	83.3	87.3	91.7

Figure 8.1.5(b): Variation in median diastolic blood pressure among HD patients, HD centres 2005

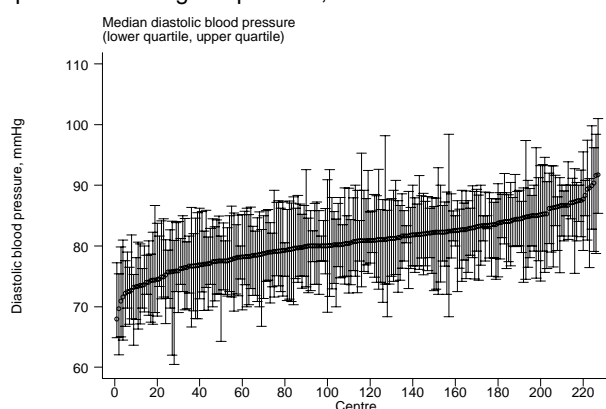
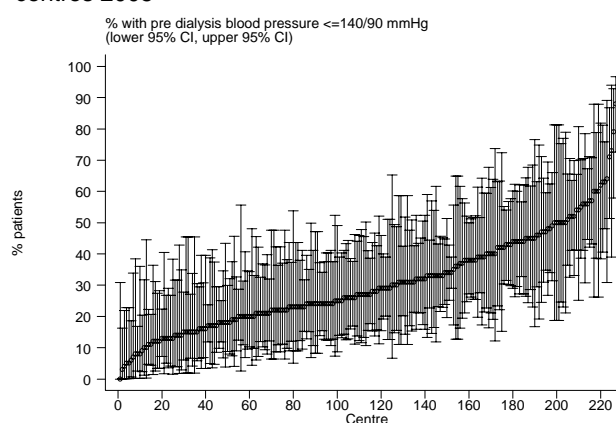


Figure 8.1.5(c): Variation in proportion of HD patients with pre dialysis blood pressure $\leq 140/90$ mmHg, HD centres 2005



The past 9 years witnessed a continuing trend in poor predialysis BP control (BP $<140/90$ mmHg), with 2005 registering a median of 27% achieving such control. This overall poor BP control mainly reflects the poor control in systolic BP in HD patients.

(c) Proportion of HD patients with Pre dialysis Blood Pressure $<140/90$ mmHg

Year	No. of centres	Min	5th Centile	LQ	Median	UQ	95th Centile	Max
1997	46	14	17	29	38	45	76	87
1998	49	9	19	27	35	43	55	72
1999	75	4	11	23	32	42	60	70
2000	108	0	9	23	32.5	43.5	63	81
2001	124	2	10	22	31.5	43.5	59	76
2002	148	0	10	22	29.5	40	58	77
2003	170	4	10	21	29	39	59	81
2004	196	0	8	20	29	38	58	91
2005	227	0	10	20	27	40	57	88

Similar to HD centres, the variation in median systolic BP among CAPD centres in 2005 is mild, and is similar to previous years (Table 8.1.65).

Table 8.1.6: Variation in BP control among CAPD centres 2005
(a) Median Systolic blood pressure among CAPD patients

Year	No. of centres	Min	5 th Centile	LQ	Median	UQ	95 th Centile	Max
1997	7	124	124	139.4	142.5	150	151.6	151.6
1998	9	110.3	110.3	135	138.6	140.8	147.5	147.5
1999	9	116.7	116.7	132.5	137.8	140	152.8	152.8
2000	11	114.1	114.1	131.1	135	139.7	149.1	149.1
2001	11	119.6	119.6	136.3	137.6	138.8	149	149
2002	14	124.4	124.4	133.7	139.6	144.2	148.2	148.2
2003	18	122.2	122.2	131	142.2	147.5	151.5	151.5
2004	18	115.9	115.9	135	139.8	143.3	149.8	149.8
2005	18	122.4	122.4	134.8	137.3	141	158	158

Figure 8.1.6(a): Variation in median systolic blood pressure among CAPD patients, CAPD centres 2005

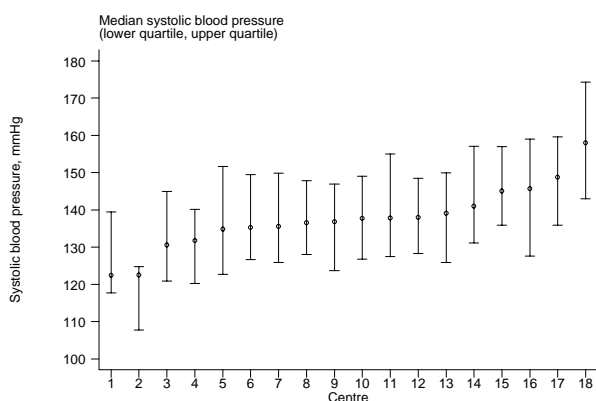
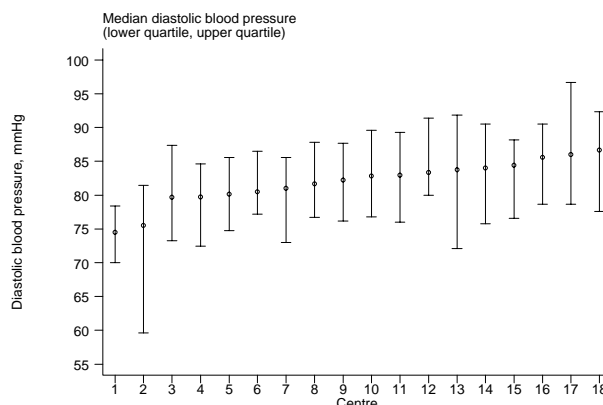


Figure 8.1.6(b): Variation in median diastolic blood pressure among CAPD patients, CAPD centres 2005



There is also only mild variation in diastolic BP control among CAPD centres in 2005 (Table 8.1.6b).

(b) Median Diastolic blood pressure (mmHg) among CAPD patients

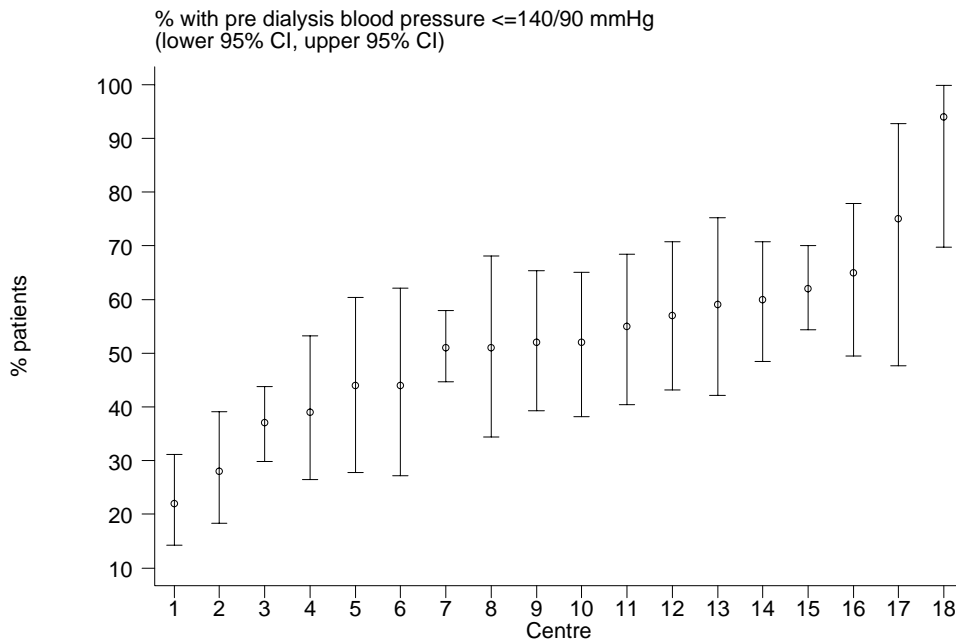
Year	No. of centres	Min	5 th Centile	LQ	Median	UQ	95 th Centile	Max
1997	7	82.5	82.5	85.3	86	86	88.7	88.7
1998	9	75	75	85.2	85.8	86	88.8	88.8
1999	9	77.5	77.5	84.2	85	85.7	86.7	86.7
2000	11	73.1	73.1	80.5	83	84.4	88	88
2001	11	79	79	80.9	83	84.8	88	88
2002	14	79.2	79.2	81.7	83.5	85.3	86.8	86.8
2003	18	63.8	63.8	80.9	82.2	84.4	89	89
2004	18	75.5	75.5	80.8	83.7	84.5	87.5	87.5
2005	18	74.5	74.5	80.1	82.5	84	86.7	86.7

In 2005 the proportion of CAPD patients with good BP control (< 140/90) is higher than HD patients (Table 8.1.6c), reflecting better systolic and diastolic BP control in CAPD patients. However it is noted that the variation in BP control in CAPD patients is relatively large (more than 4 times variation between 5th percentile centre versus 95th percentile centre) as illustrated in Figure 8.1.6c.

(c) Proportion of CAPD patients with Pre dialysis Blood Pressure < 140/90 mmHg

Year	No. of centres	Min	5th Centile	LQ	Median	UQ	95th Centile	Max
1997	7	26	26	35	41	46	59	59
1998	9	36	36	44	47	47	100	100
1999	9	30	30	41	52	58	100	100
2000	11	24	24	47	56	65	92	92
2001	11	36	36	46	52	60	85	85
2002	14	21	21	35	49	53	71	71
2003	18	24	24	36	44.5	66	100	100
2004	18	29	29	39	47.5	57	82	82
2005	18	22	22	44	52	60	94	94

Figure 8.1.6(c): Variation in proportion of CAPD patients with pre dialysis blood pressure ≤ 140/90 mmHg, CAPD centres 2005



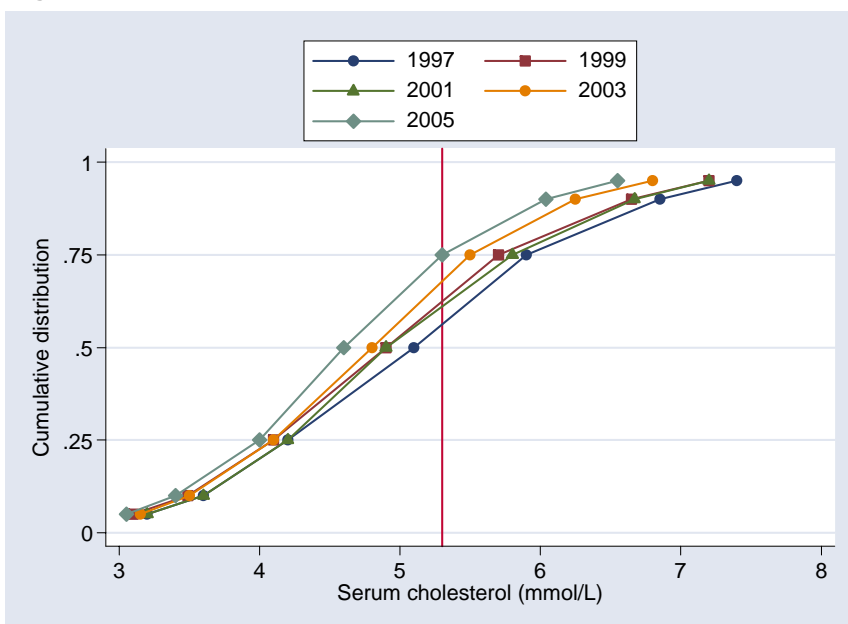
8.2: DYSLIPIDAEMIA IN DIALYSIS PATIENTS

The previous trend of better total cholesterol control in HD patients continued in 2005, with 73% of HD patients achieving total cholesterol level of < 5.3 mmol/l (Table 8.2.1)

Table 8.2.1: Distribution of serum Cholesterol, HD patients 1997-2005

Year	No. of subjects	Mean	SD	Median	LQ	UQ	% patients <3.5 mmol/L	% patients 3.5- <5.3 mmol/L	% patients 5.3- <6.2 mmol/L	% patients ≥6.2 mmol/L
1997	1158	5.1	1.4	5.1	4.2	5.9	8	49	24	19
1998	1166	5.1	1.3	5	4.2	5.8	7	53	22	17
1999	1871	5	1.3	4.9	4.1	5.7	10	54	20	15
2000	2956	5	1.2	4.9	4.2	5.8	8	53	23	16
2001	3898	5.1	1.3	4.9	4.2	5.8	8	52	24	16
2002	4751	5	1.2	4.9	4.2	5.7	9	55	24	13
2003	5811	4.8	1.1	4.8	4.1	5.5	9	59	21	11
2004	6710	4.7	1.1	4.7	4	5.4	11	60	21	8
2005	7776	4.7	1.1	4.6	4	5.3	12	61	19	8

Figure 8.2.1: Cumulative distribution of Cholesterol, HD patients 1997-2005



Similarly, in 2005, the trend towards better cholesterol control in CAPD patients continued with 60% of CAPD patients achieving total cholesterol < 5.3 mmol/L. (Table 8.2.2). This level of cholesterol control in CAPD patients is less than that in HD patients (60% versus 73%).

Table 8.2.2: Distribution of serum Cholesterol (mmol/L), CAPD patients 1997-2005

Year	No. of subjects	Mean	SD	Median	LQ	UQ	% patients <3.5 mmol/L	% patients 3.5-<5.3 mmol/L	% patients 5.3-<6.2 mmol/L	% patients ≥6.2 mmol/L
1997	420	6.1	1.4	6	5.1	6.9	2	27	28	43
1998	348	6	1.4	5.9	5	6.8	3	29	28	41
1999	434	5.7	1.4	5.6	4.9	6.4	3	37	30	31
2000	526	5.9	1.6	5.7	4.9	6.7	3	31	30	36
2001	581	5.8	1.4	5.7	4.8	6.6	2	36	27	35
2002	766	5.6	1.4	5.5	4.6	6.4	4	38	28	29
2003	1106	5.4	1.4	5.3	4.4	6.1	5	45	27	23
2004	1231	5.3	1.4	5.2	4.4	6.1	5	48	26	21
2005	1241	5.2	1.3	5	4.3	5.9	5	55	22	18

Figure 8.2.2: Cumulative distribution of Cholesterol, CAPD patients 1997-2005

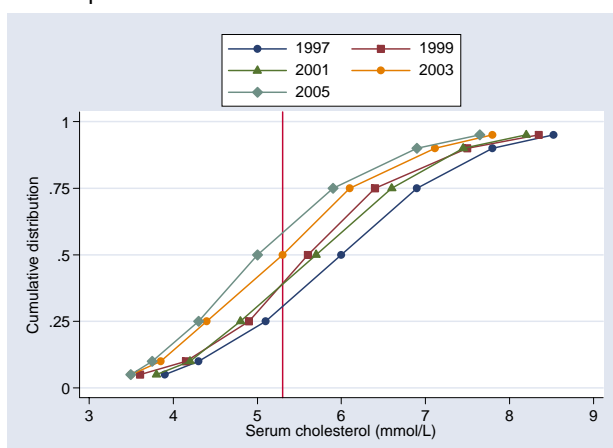
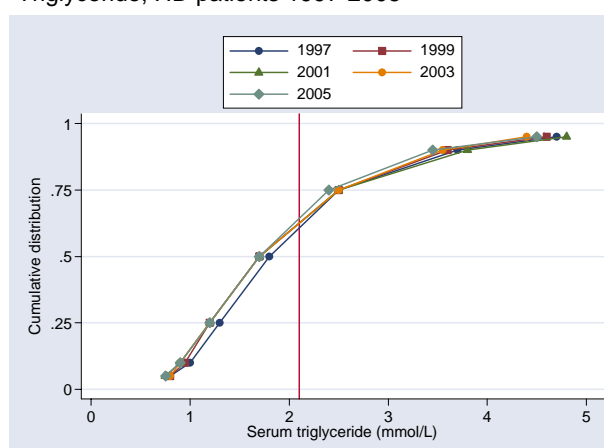


Figure 8.2.3: Cumulative distribution of serum Triglyceride, HD patients 1997-2005



Serum triglyceride control in HD patients in 2005 remain similar to past few years with 72% of CAPD patients having serum triglyceride < 2.3 mmol/l (Table 8.2.3).

Table 8.2.3: Distribution of serum Triglyceride, HD patients 1997-2005

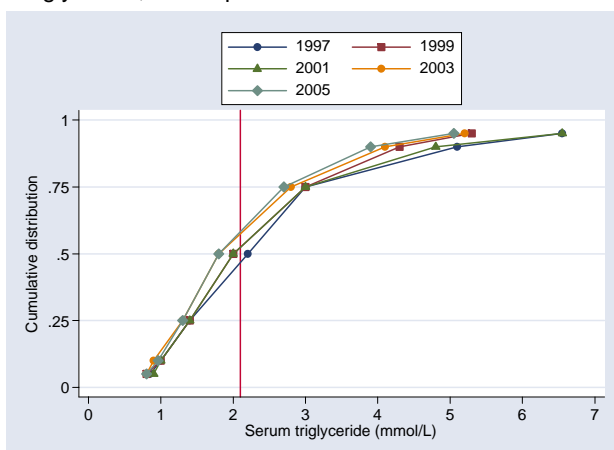
Year	No. of subjects	Mean	SD	Median	LQ	UQ	% patients <1.7 mmol/L	% patients 1.7-<2.3 mmol/L	% patients 2.3-<3.5 mmol/L	% patients ≥3.5 mmol/L
1997	1074	2.1	1.4	1.8	1.3	2.5	45	24	18	12
1998	1089	2.2	1.5	1.8	1.3	2.6	42	26	20	12
1999	1633	2.1	1.3	1.7	1.2	2.5	49	21	18	11
2000	2393	2.1	1.4	1.7	1.3	2.6	48	22	19	12
2001	3162	2.1	1.4	1.7	1.2	2.5	48	22	17	13
2002	3861	2.1	1.4	1.8	1.2	2.5	47	22	18	12
2003	4715	2	1.3	1.7	1.2	2.5	48	23	18	11
2004	5607	2	1.2	1.7	1.2	2.4	51	23	17	10
2005	6851	2	1.3	1.7	1.2	2.4	50	22	18	10

The proportion of CAPD patients with serum triglyceride < 2.3 mmol/l (67%) is less than that in HD patients in 2005 (Table 8.2.4). This situation is similar to previous years.

Table 8.2.4: Distribution of serum Triglyceride, CAPD patients 1997-2005

Year	No. of subjects	Mean	SD	Median	LQ	UQ	% patients <1.7 mmol/L	% patients 1.7-<2.3 mmol/L	% patients 2.3-<3.5 mmol/L	% patients ≥3.5 mmol/L
1997	413	2.6	1.9	2.2	1.4	3	36	22	25	18
1998	344	2.4	1.8	1.8	1.3	3	42	22	17	19
1999	421	2.4	1.6	2	1.4	3	38	25	18	19
2000	520	2.7	2.2	2.1	1.5	3	33	24	23	21
2001	576	2.6	1.8	2	1.4	3	36	22	22	20
2002	767	2.5	1.7	2	1.4	3	39	21	22	18
2003	1102	2.3	1.6	1.8	1.3	2.8	45	20	21	14
2004	1224	2.2	1.6	1.8	1.3	2.6	47	23	17	13
2005	1240	2.2	1.5	1.8	1.3	2.7	43	24	18	14

Figure 8.2.4: Cumulative distribution of serum Triglyceride, CAPD patients 1997-2005



In 2005, there was mild variation in median serum cholesterol level among HD centres, similar to 2004. It is noted that the median serum cholesterol level in HD centres has gradually declined from 5.0 mmol/l in 1997 to 4.6 mmol/l in 2005.

Table 8.2.5: Variation in dyslipidaemia among HD centres 2005
(a) Median serum cholesterol level among HD patients

Year	No. of centres	Min	5th Centile	LQ	Median	UQ	95th Centile	Max
1997	34	4.1	4.3	4.6	5	5.3	5.8	5.9
1998	32	4.2	4.4	4.7	5	5.3	5.4	5.5
1999	48	3.5	4.1	4.6	4.8	5	5.6	5.8
2000	78	4.1	4.3	4.8	5	5.2	5.5	5.8
2001	93	4.1	4.4	4.7	5	5.2	5.6	6.3
2002	126	4.4	4.5	4.7	4.9	5.1	5.5	6
2003	150	4.2	4.3	4.6	4.8	5	5.3	5.8
2004	174	3.6	4.2	4.5	4.7	4.9	5.3	6.2
2005	198	3.8	4.2	4.4	4.6	4.8	5.2	5.5

Figure 8.2.5(a): Variation in median serum cholesterol level among HD patients, HD centres 2005

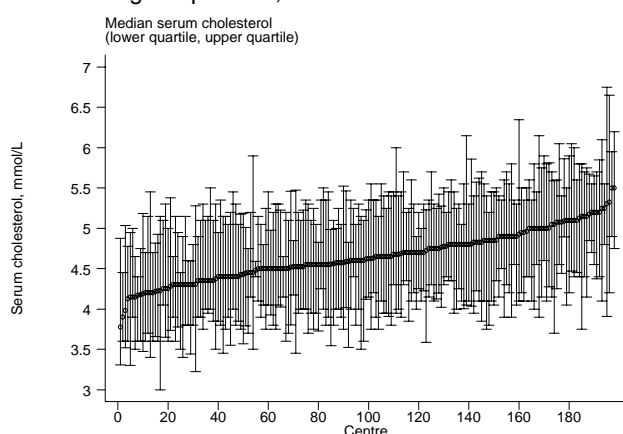
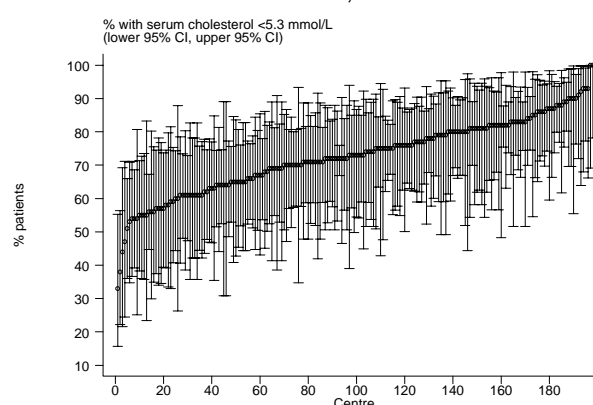


Figure 8.2.5(b): Variation in proportion of patients with serum cholesterol < 5.3 mmol/L, HD centres 2005



In 2005, there is mild variation in the proportion of patients with target serum cholesterol level <5.3 mmol/l among HD centres, similar to 2004. It is noted that the proportion of patients with target serum cholesterol control for the 50th percentile centre has increased from 57% in 1997 to 73% in 2005.

(b) Proportion of patients with serum cholesterol < 5.3 mmol/L, HD Centres

Year	No. of centres	Min	5th Centile	LQ	Median	UQ	95th Centile	Max
1997	34	32	35	48	57	64	83	92
1998	32	30	36	50	62.5	69	90	91
1999	48	35	38	58.5	64	76.5	85	93
2000	78	27	36	51	61	68	86	100
2001	93	14	36	54	60	68	77	82
2002	126	32	45	56	64	71	76	92
2003	150	36	44	60	68	75	83	92
2004	174	25	47	63	71	77	90	94
2005	198	33	55	65	73	81	90	100

In 2005, there is mild variation in median serum triglyceride level among HD centres, similar to 2004.

(c) Median serum triglyceride level among HD patients

Year	No. of centres	Min	5th Centile	LQ	Median	UQ	95th Centile	Max
1997	33	1.3	1.3	1.6	1.8	1.9	2.5	2.9
1998	30	1.4	1.4	1.7	1.8	2	2.1	2.3
1999	43	1.2	1.4	1.5	1.7	1.9	2.4	2.7
2000	61	1.2	1.4	1.5	1.8	2	2.5	2.8
2001	80	1.1	1.4	1.5	1.7	1.9	2.2	2.7
2002	99	1.1	1.4	1.6	1.8	1.9	2.3	2.8
2003	126	1.2	1.3	1.5	1.7	1.9	2.2	2.5
2004	156	1	1.3	1.5	1.7	1.9	2.2	2.8
2005	180	.9	1.3	1.5	1.7	1.8	2.2	2.5

Figure 8.2.5(c): Variation in median serum triglyceride level among HD patients, HD centres 2005

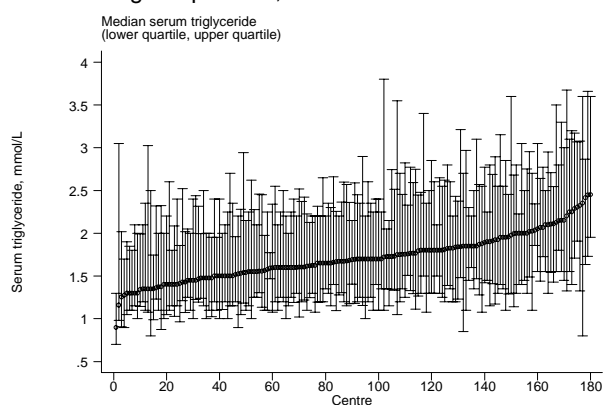
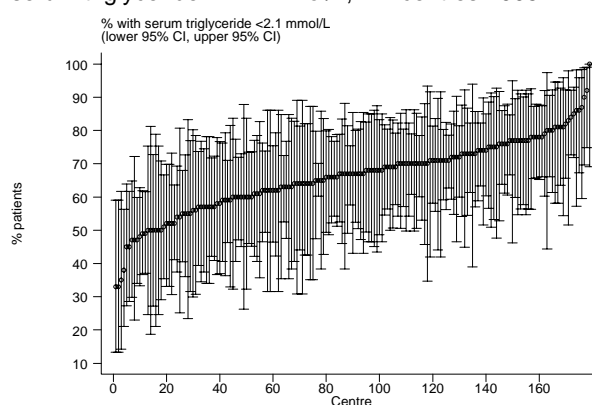


Figure 8.2.5(d): Variation in proportion of patients with serum triglyceride < 2.1 mmol/L, HD centres 2005



In 2005, there is mild variation in proportion of patients with serum triglyceride < 2.1 mmol/l among HD centres, similar to 2004.

(d) Proportion of patients with serum triglyceride < 2.1 mmol/L, HD centres

Year	No. of centres	Min	5th Centile	LQ	Median	UQ	95th Centile	Max
1997	33	23	36	59	65	77	85	87
1998	30	44	50	56	63	72	82	90
1999	43	27	47	59	68	73	81	92
2000	61	23	40	57	66	73	83	92
2001	80	38	45	56.5	65	75.5	83	90
2002	99	9	46	58	66	72	81	94
2003	126	30	45	57	67	76	89	100
2004	156	21	46	60	68.5	78	86	100
2005	179	33	47	60	67	73	83	100

In 2005, there is mild variation in median serum cholesterol level among CAPD centres, similar to 2004. It is noted that the median serum cholesterol level for the 50th percentile CAPD centre has decreased from 5.9 mmol/l in 1997 to 5.0 mmol/l in 2005.

Table 8.2.6: Variation in dyslipidaemia among CAPD centres 2005

(a) Median serum cholesterol level among CAPD patients

Year	No. of centres	Min	5th Centile	LQ	Median	UQ	95th Centile	Max
1997	6	5.8	5.8	5.9	5.9	6.1	6.1	6.1
1998	6	4.8	4.8	5.6	5.8	6.1	6.2	6.2
1999	8	5.1	5.1	5.4	5.7	5.8	6	6
2000	10	5.3	5.3	5.4	5.6	5.9	6.4	6.4
2001	10	5	5	5.6	5.9	6.1	6.2	6.2
2002	14	5	5	5.4	5.6	5.7	6.3	6.3
2003	18	4.6	4.6	5.2	5.4	5.8	6.1	6.1
2004	18	4.6	4.6	4.9	5.2	5.5	5.8	5.8
2005	18	4.4	4.4	4.7	5	5.3	5.9	5.9

Figure 8.2.6(a): Variation in median serum cholesterol level among CAPD patients, CAPD centres 2005

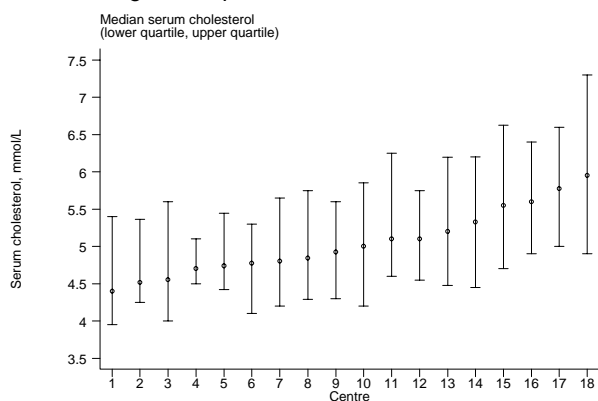
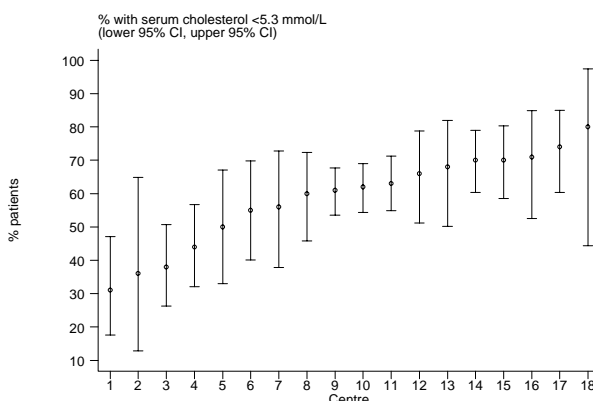


Figure 8.2.6(b): Variation in proportion of patients with serum cholesterol < 5.3 mmol/L, CAPD centres 2005



The variation in the proportion of patients with serum cholesterol < 5.3 mmol/l remains significant (more than 2 fold difference between 5th percentile centre versus 95th percentile centre), reflecting the difference in lipid control between the CAPD centres contributing data in 2005.

(b) Proportion of patients with serum cholesterol < 5.3 mmol/L, CAPD centres

Year	No. of centres	Min	5th Centile	LQ	Median	UQ	95th Centile	Max
1997	6	27	27	27	29	31	33	33
1998	6	24	24	27	32	37	56	56
1999	8	10	10	37	39.5	45	53	53
2000	10	11	11	18	31.5	46	50	50
2001	10	22	22	30	34	45	62	62
2002	14	25	25	35	41.5	43	65	65
2003	18	0	0	35	46.5	55	74	74
2004	18	9	9	41	52.5	60	70	70
2005	18	31	31	50	61.5	70	80	80

In 2005, there is mild variation in median serum triglyceride level among CAPD centres, similar to 2004

(c) Median serum triglyceride level among CAPD patients

Year	No. of centres	Min	5th Centile	LQ	Median	UQ	95th Centile	Max
1997	6	1.7	1.7	1.9	2.1	2.2	2.4	2.4
1998	6	1.2	1.2	1.5	1.7	1.9	2.1	2.1
1999	8	1.7	1.7	1.9	2	2.1	2.6	2.6
2000	10	1.8	1.8	2	2.3	2.5	2.5	2.5
2001	10	1.5	1.5	1.8	2	2.1	3	3
2002	14	1.5	1.5	1.9	2	2.1	2.4	2.4
2003	18	1.1	1.1	1.7	1.8	2	2.3	2.3
2004	18	1.3	1.3	1.6	1.8	1.9	2.3	2.3
2005	18	1.3	1.3	1.6	1.9	2	2.2	2.2

Figure 8.2.6(c): Variation in median serum triglyceride level among CAPD patients, CAPD centres 2005

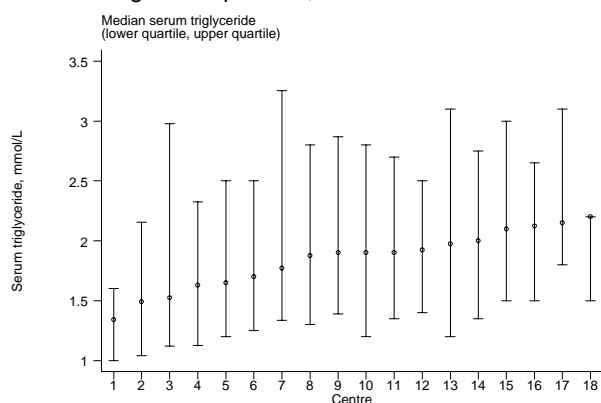
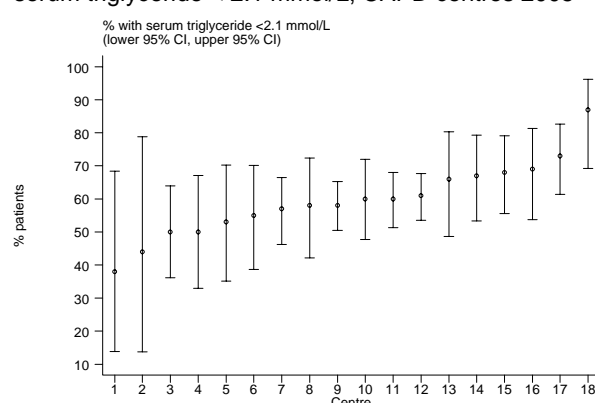


Figure 8.2.6(d): Variation in proportion of patients with serum triglyceride < 2.1 mmol/L, CAPD centres 2005



The variation in the proportion of patients with serum triglyceride < 2.1 mmol/l remains significant (more than 2 fold difference between 5th percentile centre versus 95th percentile centre) in 2005.

(d) Proportion of patients with serum triglyceride < 2.1 mmol/L

Year	No. of centres	Min	5th Centile	LQ	Median	UQ	95th Centile	Max
1997	6	40	40	46	52	56	61	61
1998	6	51	51	55	61	70	85	85
1999	8	37	37	53.5	56	59	64	64
2000	10	18	18	44	49	54	62	62
2001	10	27	27	50	53	58	67	67
2002	14	37	37	52	54	57	74	74
2003	18	49	49	54	58.5	62	100	100
2004	18	40	40	60	62.5	64	89	89
2005	18	38	38	53	59	67	87	87