

Chapter 11

Hepatitis on Dialysis

Teo Sue Mei
Clare Tan Hui Hong
Foo Sui Mei

Table 11.1: Prevalence of positive HBsAg and positive Anti-HCV at annual survey, HD patients 1998-2007

Year	No. of subjects	Prevalence of HBsAg+ (%)	Prevalence of Anti-HCV+ (%)
1998	2139	6	22
1999	2991	6	23
2000	4386	6	25
2001	5187	6	23
2002	6106	5	20
2003	6976	5	19
2004	7617	5	17
2005	8957	4	14
2006	11295	5	12
2007	12479	5	11

Table 11.2: Prevalence of positive HBsAg and positive Anti-HCV at annual survey, CAPD patients 1998-2007

Year	No. of subjects	Prevalence of HBsAg ⁺ (%)	Prevalence of Anti-HCV ⁺ (%)
1998	541	3	6
1999	610	2	5
2000	662	2	5
2001	781	2	3
2002	891	3	4
2003	1223	3	4
2004	1200	4	5
2005	1318	4	5
2006	1491	5	4
2007	1727	5	4

Table 11.3: Variation in Proportion of patients with positive HBsAg at annual survey among HD centres, 2007

Year	No. of centres	Min	5 th Centile	LQ	Median	UQ	95 th Centile	Max
1998	50	0	0	0	5	9	18	23
1999	75	0	0	0	5	10	19	30
2000	108	0	0	0	4	9	15	73
2001	125	0	0	0	5	9	15	82
2002	157	0	0	0	3	8	14	80
2003	180	0	0	0	3.5	7	15	69
2004	203	0	0	0	3	8	14	93
2005	233	0	0	0	1	6	15	100
2006	291	0	0	0	0	6	15	94
2007	305	0	0	0	0	6	16	100

Figure 11.3: Variation in Proportion of patients with positive HBsAg among HD centres, 2007

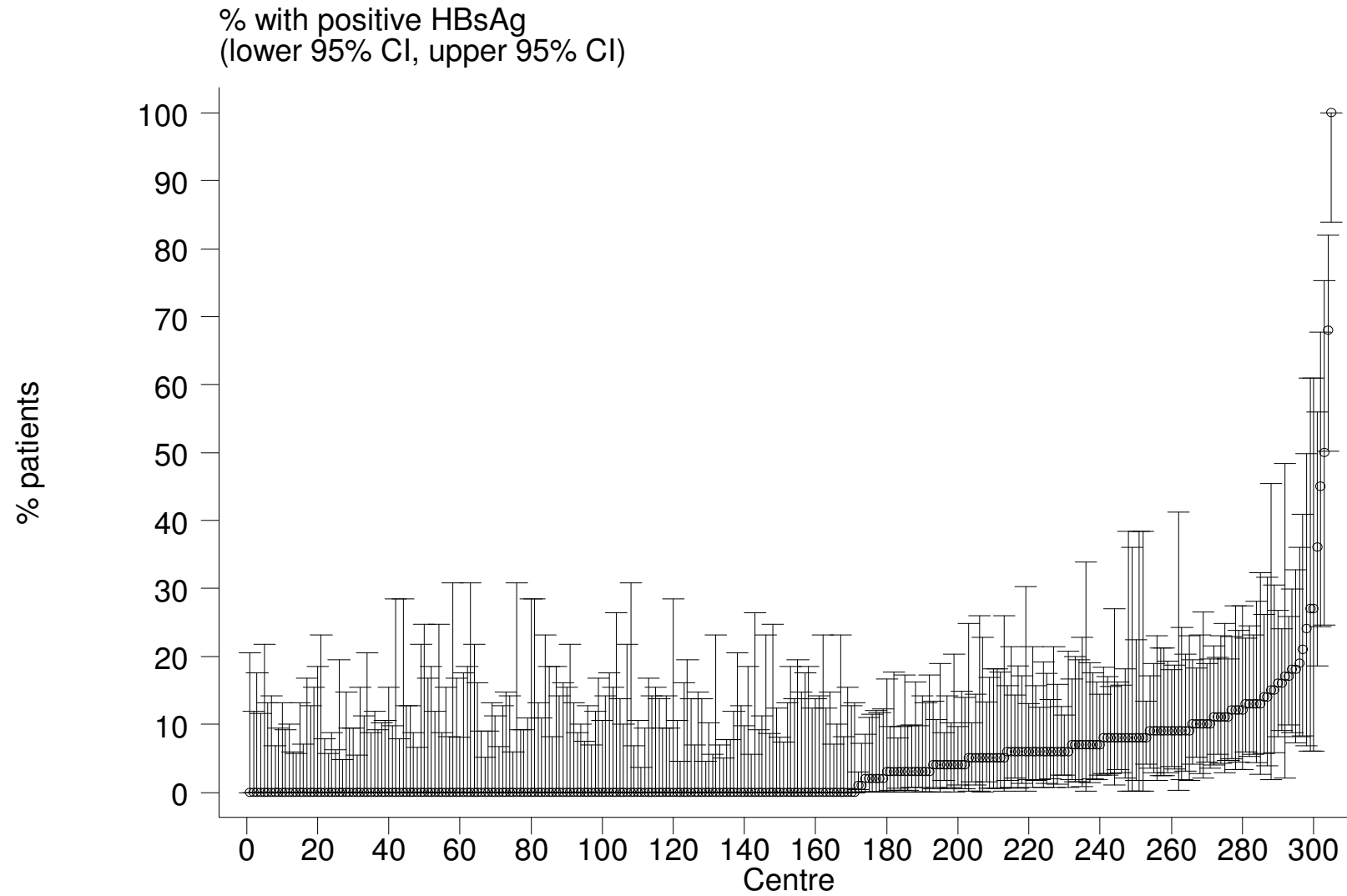


Table 11.4: Variation in Proportion of patients with positive HBsAg at annual survey among CAPD centres, 2007

Year	No. of centres	Min	5 th Centile	LQ	Median	UQ	95 th Centile	Max
1998	9	0	0	0	1	3	6	6
1999	10	0	0	0	2	2	4	4
2000	11	0	0	0	1	4	5	5
2001	12	0	0	0	2	3	9	9
2002	15	0	0	1	3	6	18	18
2003	19	0	0	1	3	6	8	8
2004	19	0	0	1	3	5	11	11
2005	20	0	0	0.5	3	5	7.5	10
2006	22	0	0	2	4	6	9	13
2007	23	0	0	0	4	6	7	11

Figure 11.4: Variation in Proportion of patients with positive HBsAg among CAPD centres, 2007

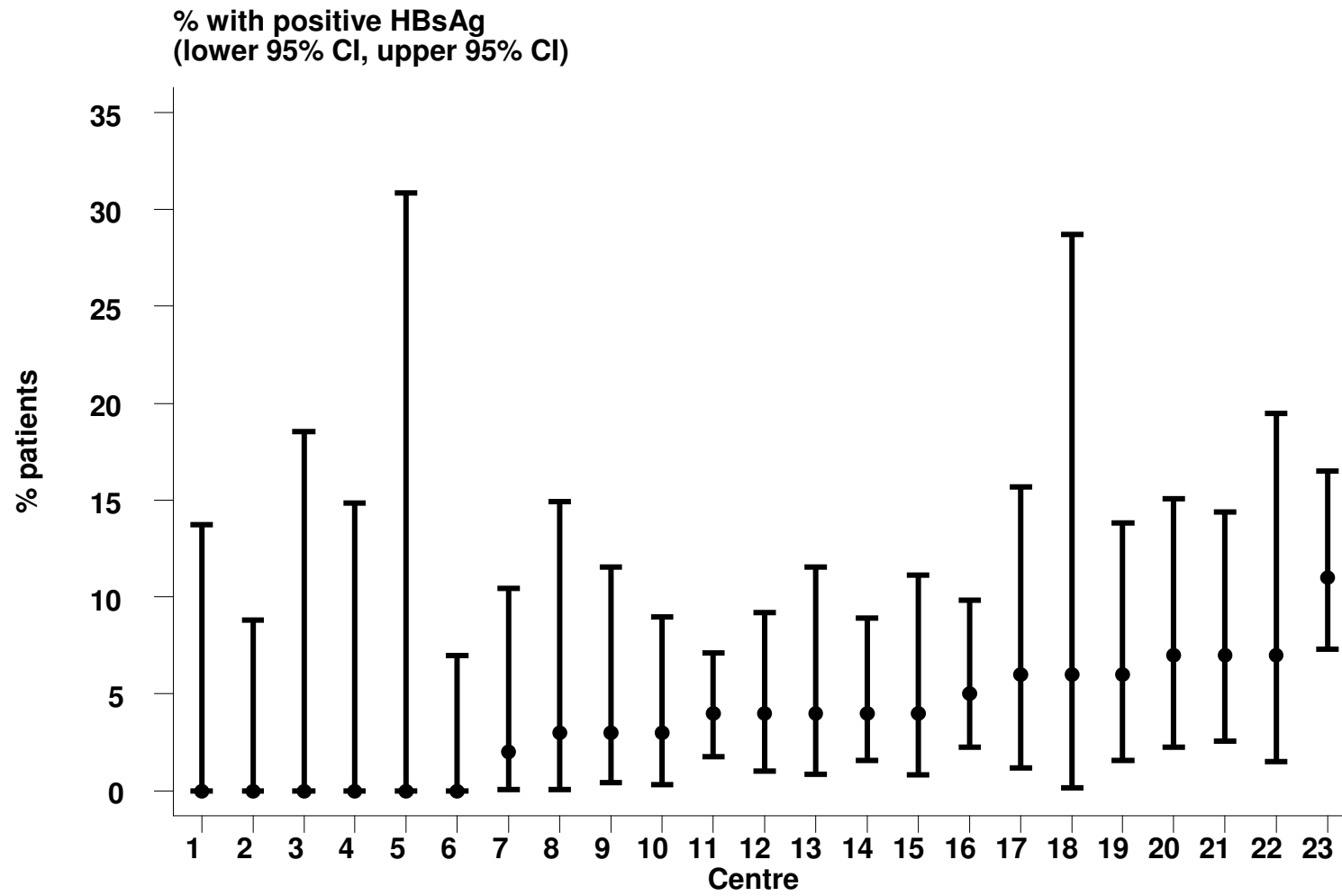


Table 11.5: Variation in Proportion of patients with positive anti-HCV at annual survey among HD centres, 2007

Year	No. of centre	Min	5 th centile	LQ	Median	UQ	95 th centile	Max
1998	50	0	0	9	20.5	30	61	78
1999	75	0	0	7	20	33	62	79
2000	108	0	0	8.5	18.5	30.5	70	91
2001	125	0	0	7	17	30	64	91
2002	157	0	0	5	14	25	58	96
2003	180	0	0	5.5	14	25.5	49.5	96
2004	205	0	0	4	11	25	49	100
2005	234	0	0	2	10	21	40	98
2006	291	0	0	0	8	18	45	98
2007	304	0	0	0	7	15	35	100

Figure 11.5: Variation in Proportion of patients with positive anti-HCV among HD centres, 2007

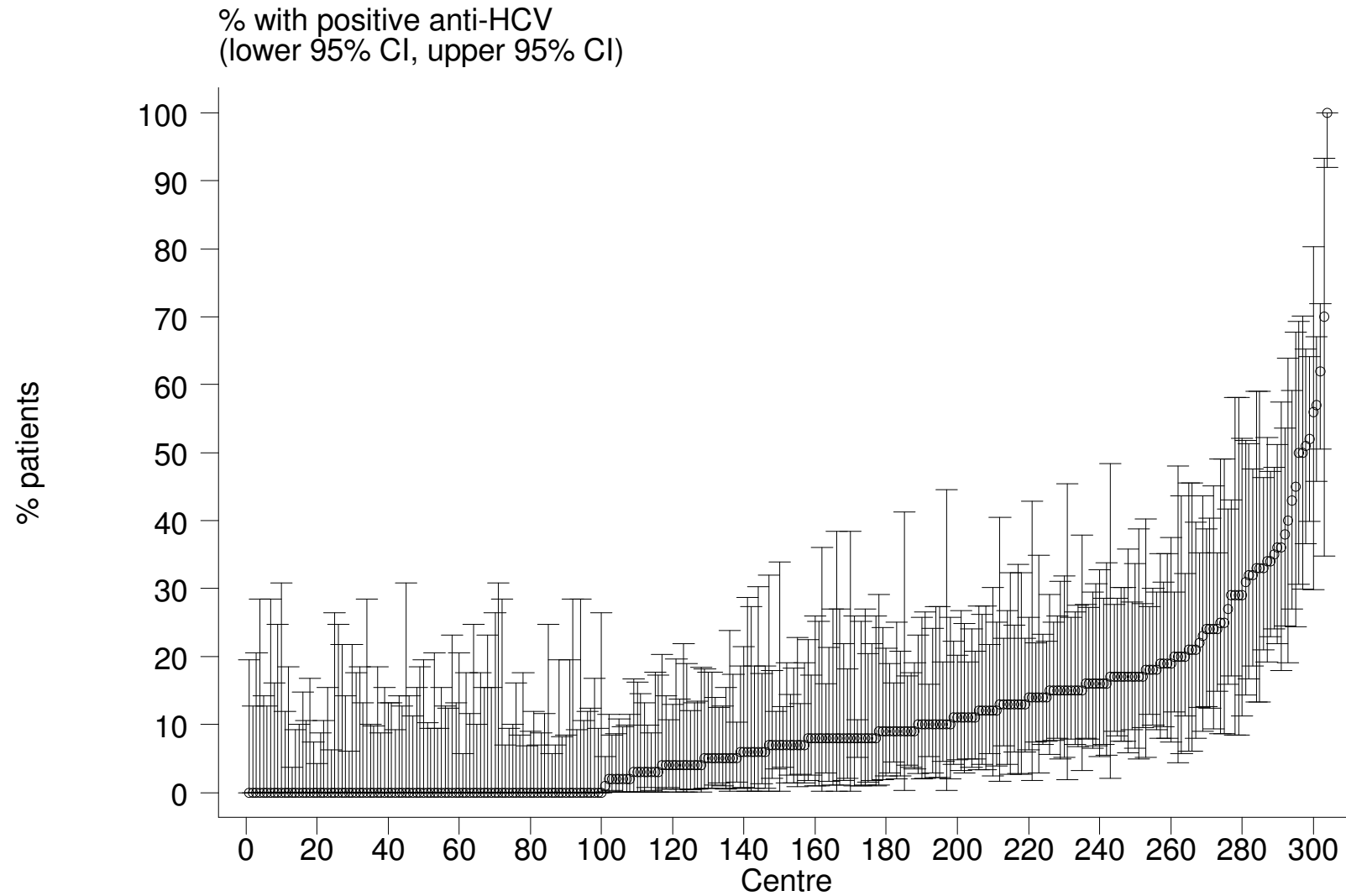


Table 11.6: Variation in Proportion of patients with positive anti-HCV at annual survey among CAPD centres, 2007

Year	No. of centre	Min	5 th centile	LQ	Median	UQ	95 th centile	Max
1998	9	0	0	3	3	8	11	11
1999	10	0	0	3	4	7	14	14
2000	11	0	0	2	3	8	10	10
2001	12	0	0	0	3	4	7	7
2002	15	0	0	0	3	8	11	11
2003	19	0	0	1	4	8	9	9
2004	19	0	0	0	4	7	10	10
2005	20	0	0	2	4	7.5	9.5	10
2006	22	0	0	2	4	6	8	9
2007	23	0	0	1	3	6	8	9

Figure 11.6: Variation in Proportion of patients with positive anti-HCV among CAPD centres, 2007

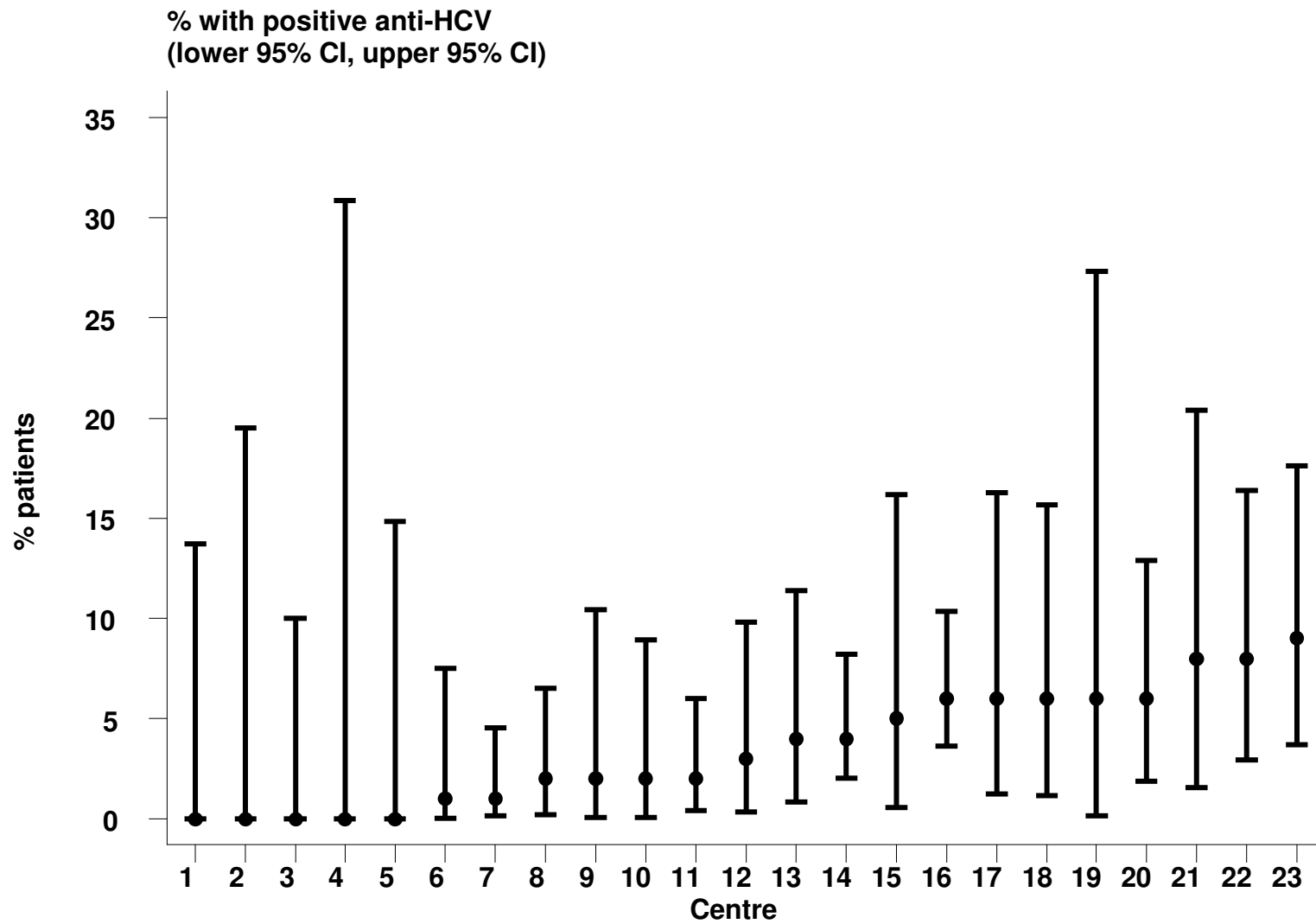


Table 11.7a: Risk factors in relation to HD practices for seroconversion to anti-HCV positive among sero-negative patients

Risk factor	Number of patients	Risk Ratio	95% CI	p-value
Assistance to Perform HD				
(1) Self care ^{ref}	158	1.00		
(2) Partial self care	128	0.66	(0.52, 0.84)	0.001
(3) Completely assisted	311	0.43	(0.36, 0.53)	0.000
Dialyzer Reuse				
(1) less than 10 ^{ref}	260	1.00		
(2) more than 10	350	0.96	(0.82, 1.13)	0.654
Dialyzer Reprocessing System				
(1) Fully Auto ^{ref}	306	1.00		
(2) Semi Auto	25	1.29	(0.85, 1.95)	0.235
(3) Manual	45	1.01	(0.74, 1.39)	0.938
(4) No Reuse	1	2.91	(0.38, 22.45)	0.305
Age				
(1) <=20 ^{ref}	26	1.00		
(2) 21-40	200	1.06	(0.70, 1.61)	0.780
(3) 41-60	278	0.57	(0.38, 0.86)	0.008
(4) >60	106	0.32	(0.21, 0.49)	0.000
Gender				
(1) Female ^{ref}	239	1.00		
(2) Male	371	1.19	(1.01, 1.41)	0.035

Table 11.7a: Risk factors in relation to HD practices for seroconversion to anti-HCV positive among sero-negative patients (cont)

Risk factor	Number of patients	Risk Ratio	95% CI	p-value
Diabetes				
(1) No ^{ref}	444	1.00		
(2) Yes	166	0.41	(0.34,0.49)	0.000
Previous Renal Transplant				
(1) No ^{ref}	515	1.00		
(2) Yes	95	3.93	(3.13, 4.94)	0.000
History of Blood Transfusion				
(1) No ^{ref}	371	1.00		
(2) Yes	239	1.24	(1.05,1.46)	0.011

Table 11.7b: Risk factors for seroconversion to anti-HCV positive among sero-negative patients in CAPD

Risk factor	Number of patients	Risk Ratio	95% CI	p-value
Age				
(1) <=20 ^{ref}	26	1.00		
(2) 21-40	200	2.79	(0.93, 8.33)	0.067
(3) 41-60	278	1.66	(0.57, 4.86)	0.354
(4) >60	106	0.39	(0.09, 1.74)	0.216
Gender				
(1) Female ^{ref}	239	1.00		
(2) Male	371	1.26	(0.70, 2.30)	0.441
Diabetes				
(1) No ^{ref}	444	1.00		
(2) Yes	166	0.32	(0.15, 0.66)	0.002
Switch from HD to CAPD				
(1) No ^{ref}	3,443	1.00		
(2) Yes	283	8.59	(4.67, 15.81)	0.000
Previous Renal Transplant				
(1) No ^{ref}	515	1.00		
(2) Yes	95	1.95	(0.76, 4.98)	0.164
History of Blood Transfusion				
(1) No ^{ref}	371	1.00		
(2) Yes	239	1.79	(0.99, 3.23)	0.052