

Chapter 5

Quality of Life and Rehabilitation Outcomes of Dialysis Patients in Malaysia

Liu Wen Jiun

Chew Thian Fook

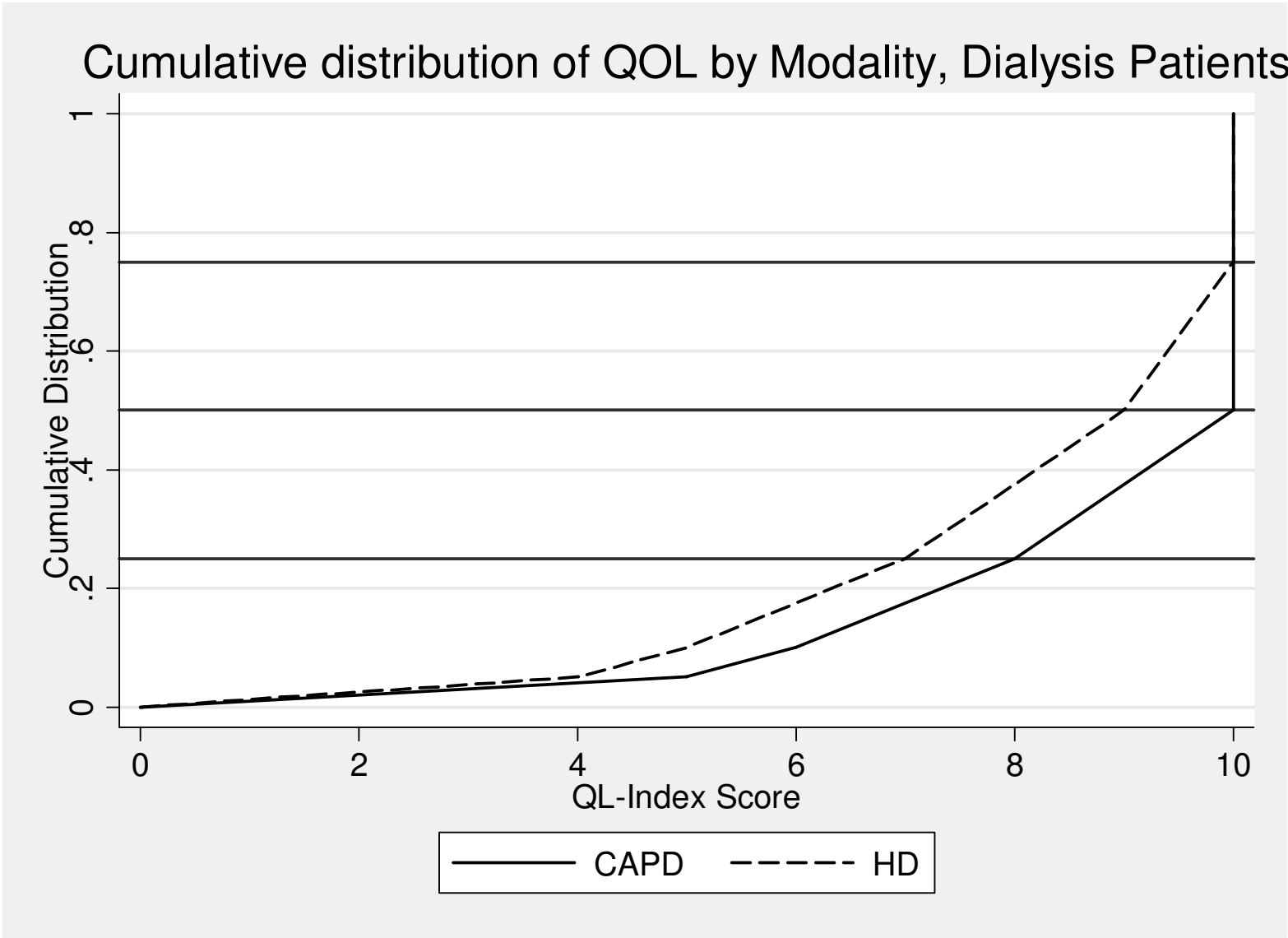
Alinda Chiu Sze Fung

Zaki Morad b Mohd Zaher

Table 5.1: Cumulative distribution of QoL-Index score in relation to Dialysis modality, All Dialysis patients 1998-2007

Dialysis modality	CAPD	HD
Number of patients	2953	15801
Centile		
0	0	0
0.05	5	4
0.1	6	5
0.25 (LQ)	8	7
0.5 (median)	10	9
0.75 (UQ)	10	10
0.9	10	10
0.95	10	10
1	10	10

Figure 5.1: Cumulative distribution of QoL-Index score in relation to Dialysis modality, All Dialysis patients 1998-2007



**Table 5.2: Cumulative distribution of QoL-Index score in relation to Diabetes mellitus,
All Dialysis patients 1998-2007**

Diabetes mellitus	No	Yes
Number of patients	9498	9256
Centile		
0	0	0
0.05	5	4
0.1	7	5
0.25 (LQ)	9	6
0.5 (median)	10	8
0.75 (UQ)	10	10
0.9	10	10
0.95	10	10
1	10	10

Figure 5.2: Cumulative distribution of QoL-Index score in relation to Diabetes mellitus, All Dialysis patients 1998-2007

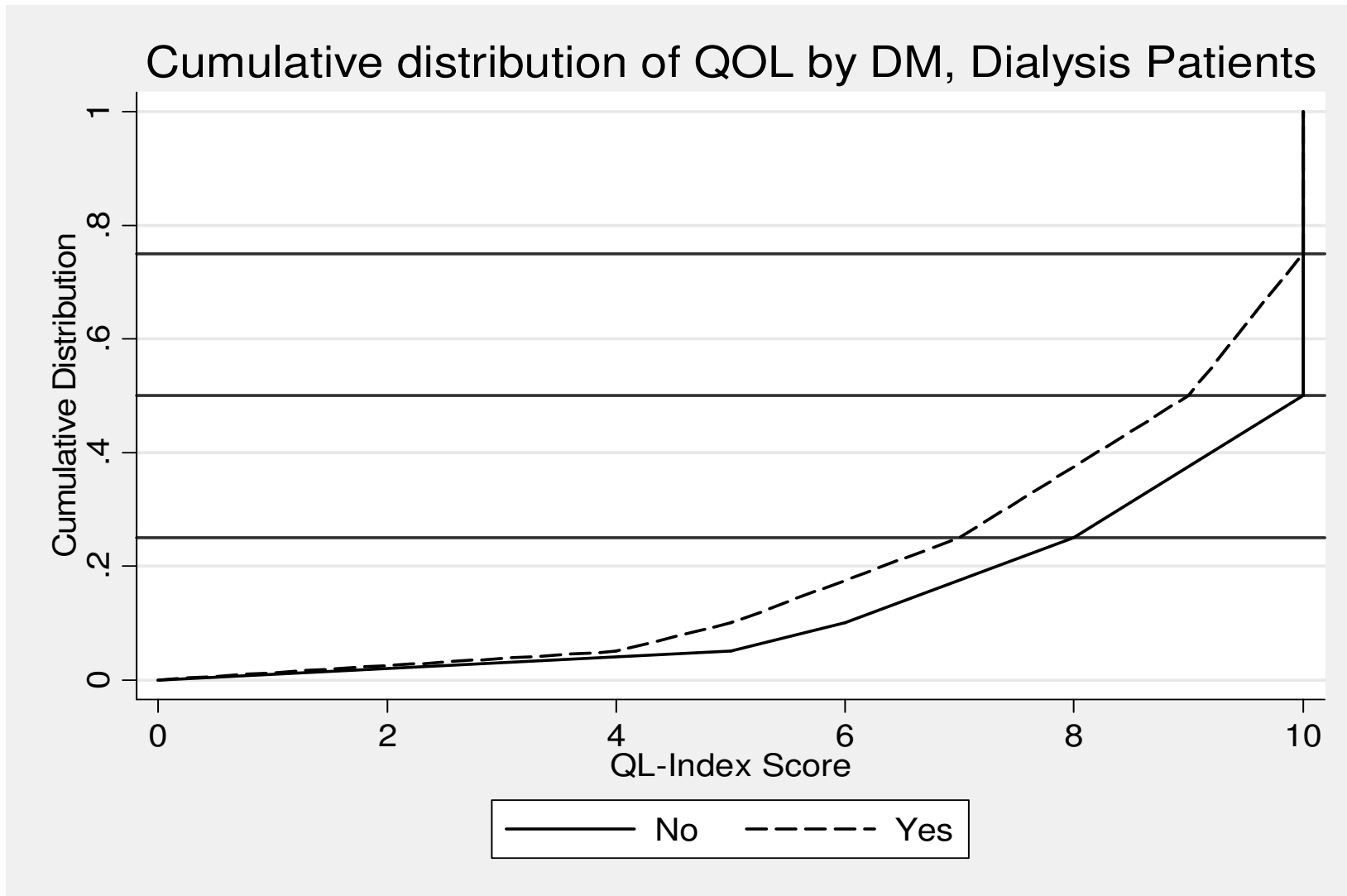


Table 5.3: Cumulative distribution of QoL-Index score in relation to Gender, All Dialysis patients 1998-2007

Gender	Male	Female
Number of patients	10366	8388
Centile		
0	0	0
0.05	5	4
0.1	6	5
0.25 (LQ)	7	7
0.5 (median)	9	9
0.75 (UQ)	10	10
0.9	10	10
0.95	10	10
1	10	10

Figure 5.3: Cumulative distribution of QoL-Index score in relation to Gender, All Dialysis patients 1998-2007

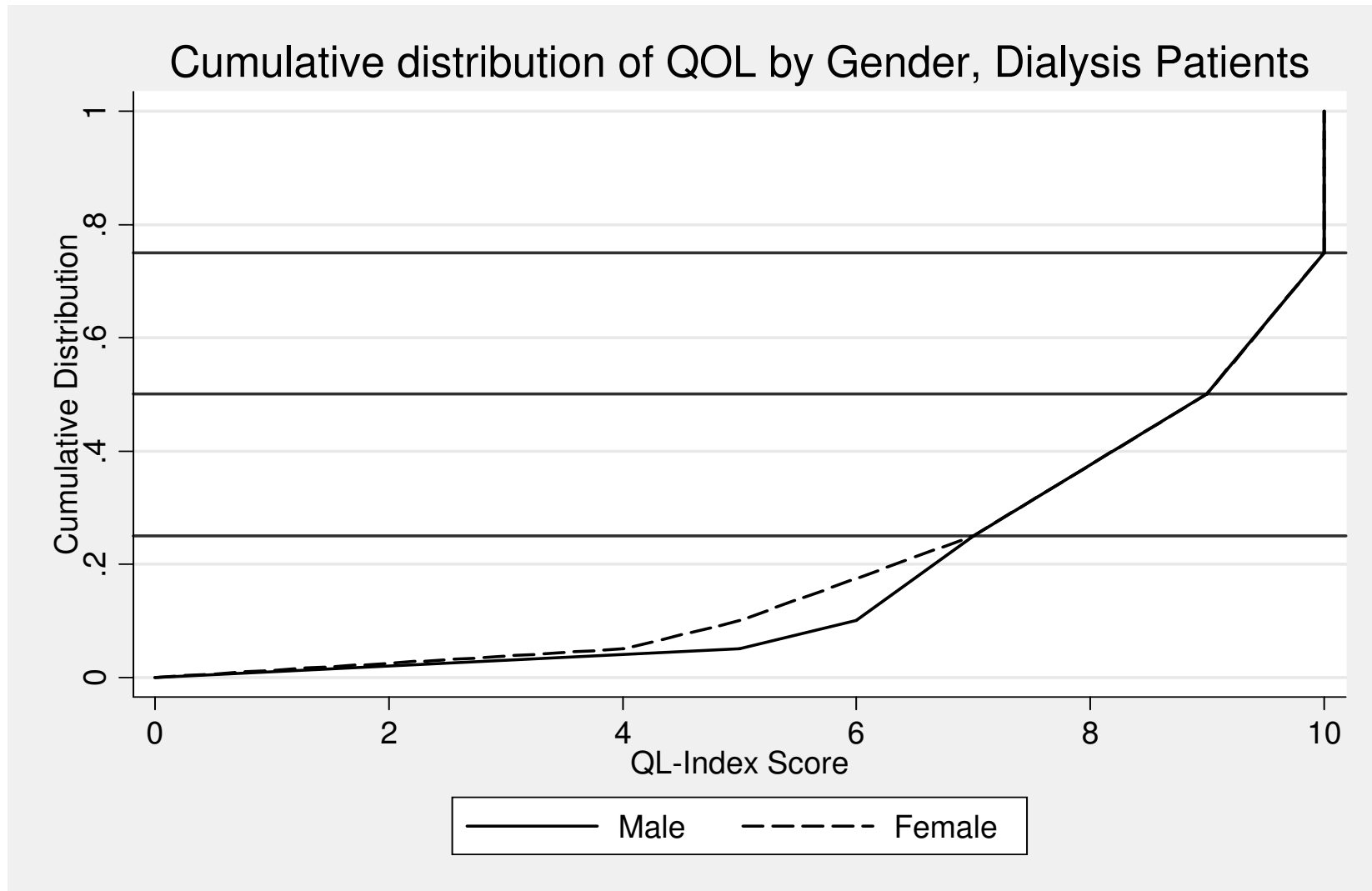


Table 5.4: Cumulative distribution of QoL-Index score in relation to Age, All Dialysis patients 1998-2007

Age group	<20	20-39	40-59	>=60
Number of patients	723	3183	8976	5872
Centile				
0	0	0	0	0
0.05	6	6	5	4
0.1	8	8	6	5
0.25 (LQ)	9	9	8	6
0.5 (median)	10	10	9	8
0.75 (UQ)	10	10	10	9
0.9	10	10	10	10
0.95	10	10	10	10
1	10	10	10	10

Figure 5.4: Cumulative distribution of QoL-Index score in relation to Age, All Dialysis patients 1998-2007

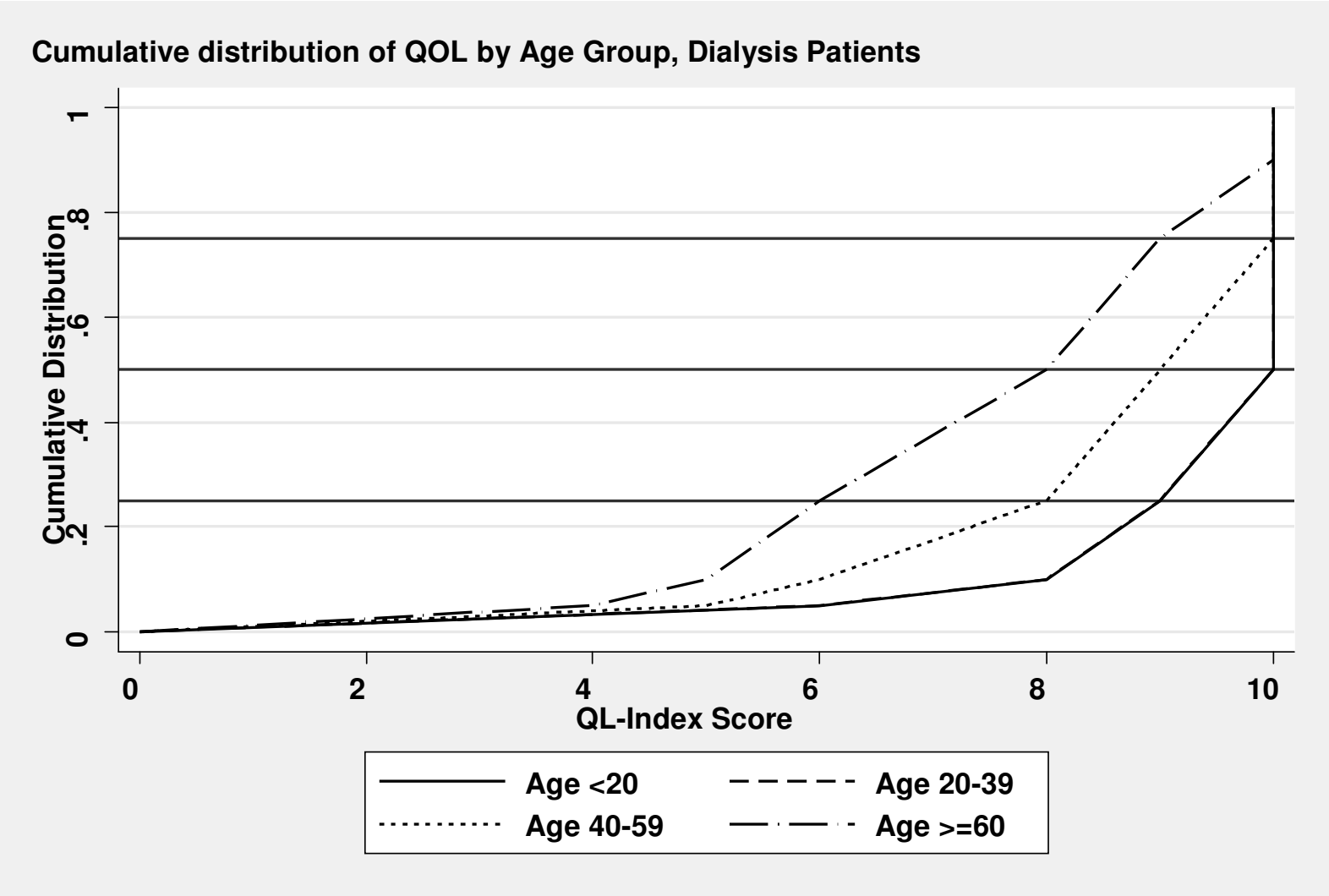


Table 5.5: Cumulative distribution of QoL-Index score in relation to Year of entry, HD patients 1998-2007

Year of Entry	1998	1999	2000	2001	2002	2003	2004	2005	2006	2007
Number of patients	834	1033	1262	1419	1619	1673	1968	2046	2272	1675
Centile										
0	0	0	0	0	0	0	0	0	0	0
0.05	5	5	5	5	4	5	4	4	4	4
0.1	6	6	6	5	5	5	5	5	5	5
0.25 (LQ)	8	7	7	7	7	7	7	7	7	7
0.5 (median)	9	9	9	9	9	9	9	9	9	9
0.75 (UQ)	10	10	10	10	10	10	10	10	10	10
0.9	10	10	10	10	10	10	10	10	10	10
0.95	10	10	10	10	10	10	10	10	10	10
1	10	10	10	10	10	10	10	10	10	10

Figure 5.5: Cumulative distribution of QoL-Index score in relation to Year of entry, HD patients 1998-2007

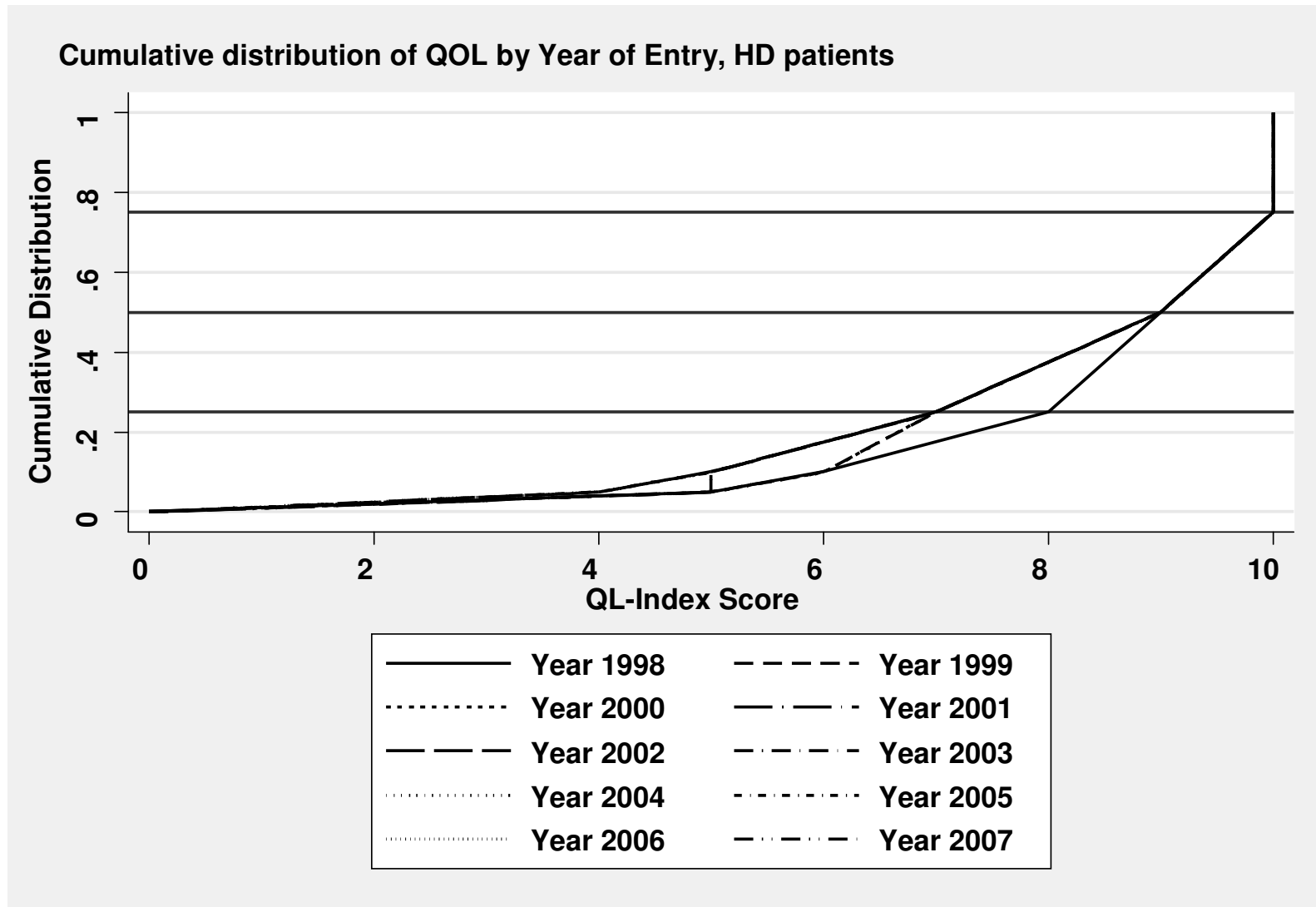


Table 5.6: Cumulative distribution of QoL-Index score in relation to Year of entry, CAPD patients 1998-2007

Year of Entry	1998	1999	2000	2001	2002	2003	2004	2005	2006	2007
Number of patients	117	167	188	269	319	368	307	319	423	476
Centile										
0	0	0	0	0	0	0	0	0	0	0
0.05	5	5	5	5	5	5	5	5	5	5
0.1	5	5	6	6	6	6	6	6	6	6
0.25 (LQ)	8	7	9	8	8	8	8	8	8	8
0.5 (median)	10	9	10	10	10	10	10	10	10	10
0.75 (UQ)	10	10	10	10	10	10	10	10	10	10
0.9	10	10	10	10	10	10	10	10	10	10
0.95	10	10	10	10	10	10	10	10	10	10
1	10	10	10	10	10	10	10	10	10	10

Figure 5.6: Cumulative distribution of QoL-Index score in relation to Year of entry, CAPD patients 1998-2007

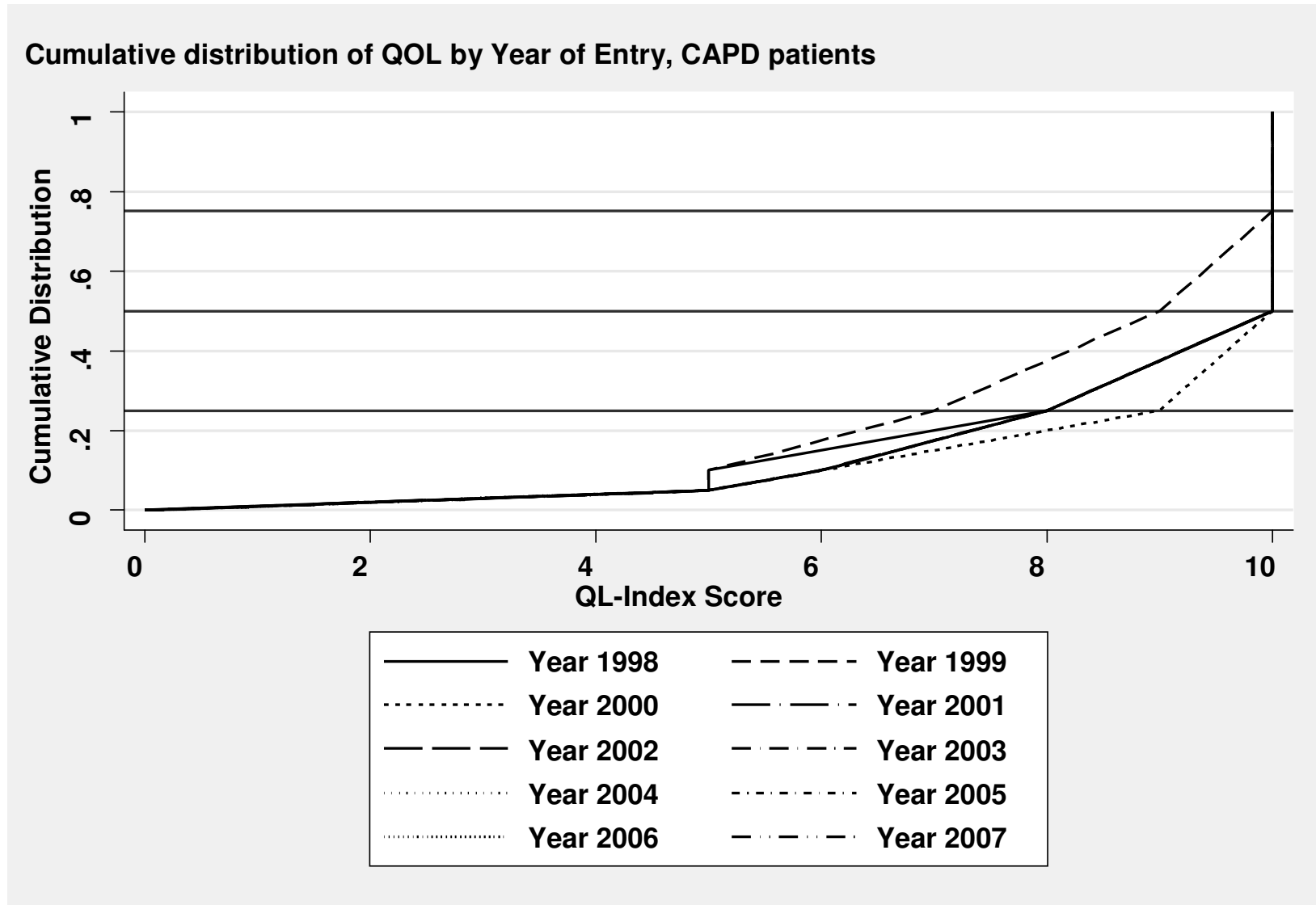


Table 5.7: Work related rehabilitation in relation to Modality, Dialysis patients 1998-2007

Modality	CAPD		HD	
	N	%	N	%
Number of patients	968		6335	
Able to return for Full or Part time for pay*	693	72	4469	71
Unable to work for pay	275	28	1866	29

** Exclude patients unable to find employment for non-health related reasons*

Table 5.8: Work related rehabilitation in relation to Year of Entry, HD patients 1998-2007

Year		1998	1997	2000	2001	2002	2003	2004	2005	2006	2007
Number of patients		429	525	581	586	666	680	757	736	815	560
Able to return for Full or Part time for pay*	No	345	398	446	423	489	483	515	505	532	333
	%	80	76	77	72	73	71	68	69	65	59
Unable to work for pay	No	84	127	135	163	177	197	242	231	283	227
	%	20	24	23	28	27	29	32	31	35	41

* Exclude patients unable to find employment for non-health related reasons

Table 5.9: Work related rehabilitation in relation to Year of Entry, CAPD patients 1998-2007

Year		1998	1999	2000	2001	2002	2003	2004	2005	2006	2007
Number of patients		39	48	63	84	119	138	101	111	135	130
Able to return for Full or Part time for pay*	No	31	35	42	67	90	106	72	79	90	81
	%	79	73	67	80	76	77	71	71	67	62
Unable to work for pay	No	8	13	21	17	29	32	29	32	45	49
	%	21	27	33	20	24	23	29	29	33	38

* Exclude patients unable to find employment for non-health related reasons