

# **Chapter 8**

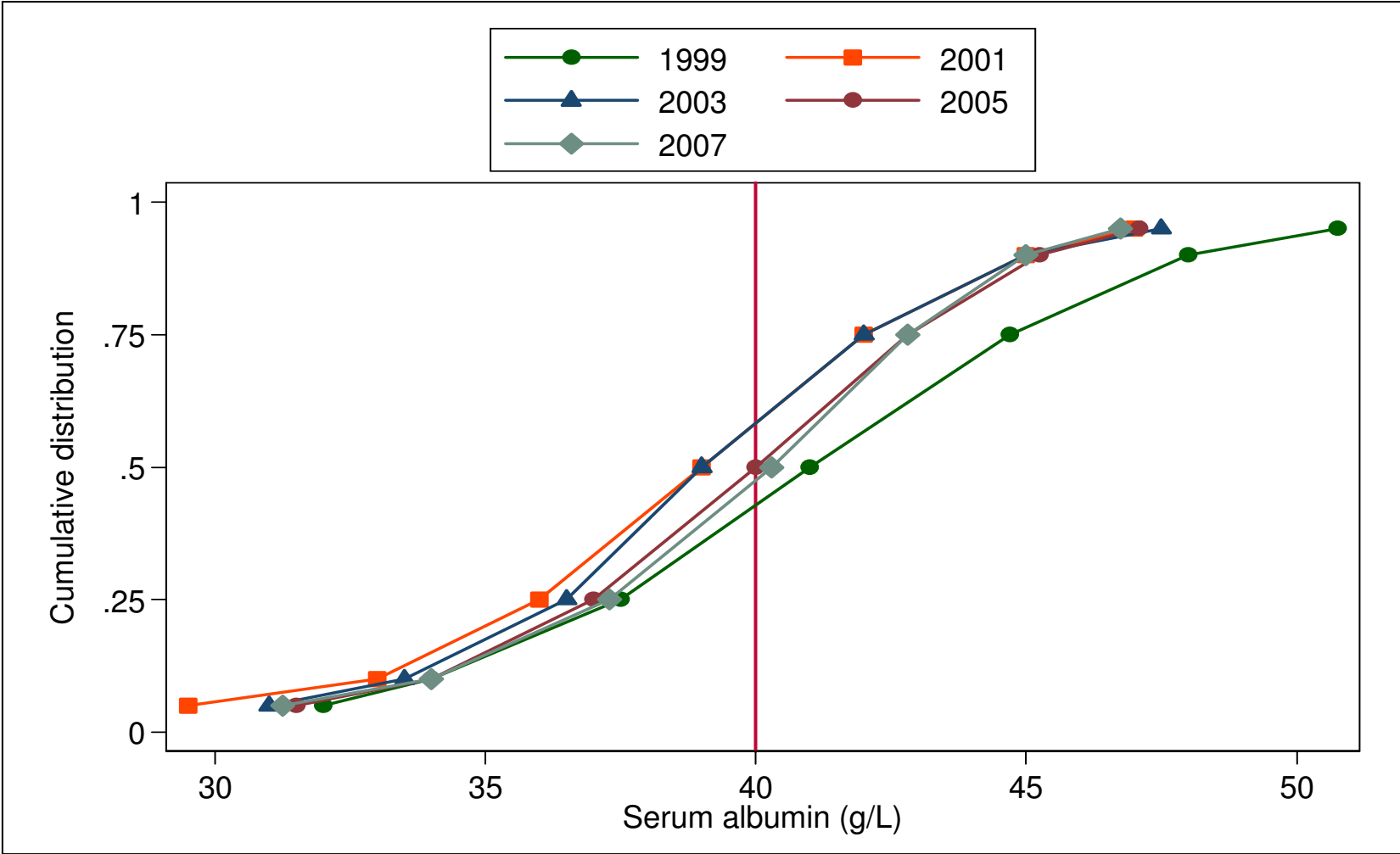
## **Nutritional Status on Dialysis**

Winnie Chee Siew Swee  
Tilakavati Karupaiah  
Ahmad Fauzi Abdul Rahman

**Table 8.1.1: Distribution of serum albumin, HD patients, 1998- 2007**

year	no of subjects	Mean	SD	Median	LQ	UQ	% patients <30g/L	% patients 30-=<35g/L	% patients 35-<40g/L	% patients ≥40g/L
1998	2075	41.2	6.5	41	37.5	44.7	3	9	28	59
1999	2755	39.7	6.1	39.7	36.3	43	4	13	35	49
2000	3733	38.6	7	39	36	42	5	11	41	43
2001	4666	39	5.6	38.5	36	41.8	3	15	44	38
2002	5568	39.2	5.6	39	36.5	42	3	12	42	43
2003	6523	39.9	5.4	40	37.3	42.5	3	9	35	52
2004	7580	39.9	5.3	40	37	42.8	3	10	34	53
2005	8706	40	5.2	40.3	37.5	42.8	3	9	33	56
2006	10928	39.8	5.4	40.3	37.3	42.8	3	10	33	54
2007	12300	39.7	5.3	40	37	42.5	3	10	35	52

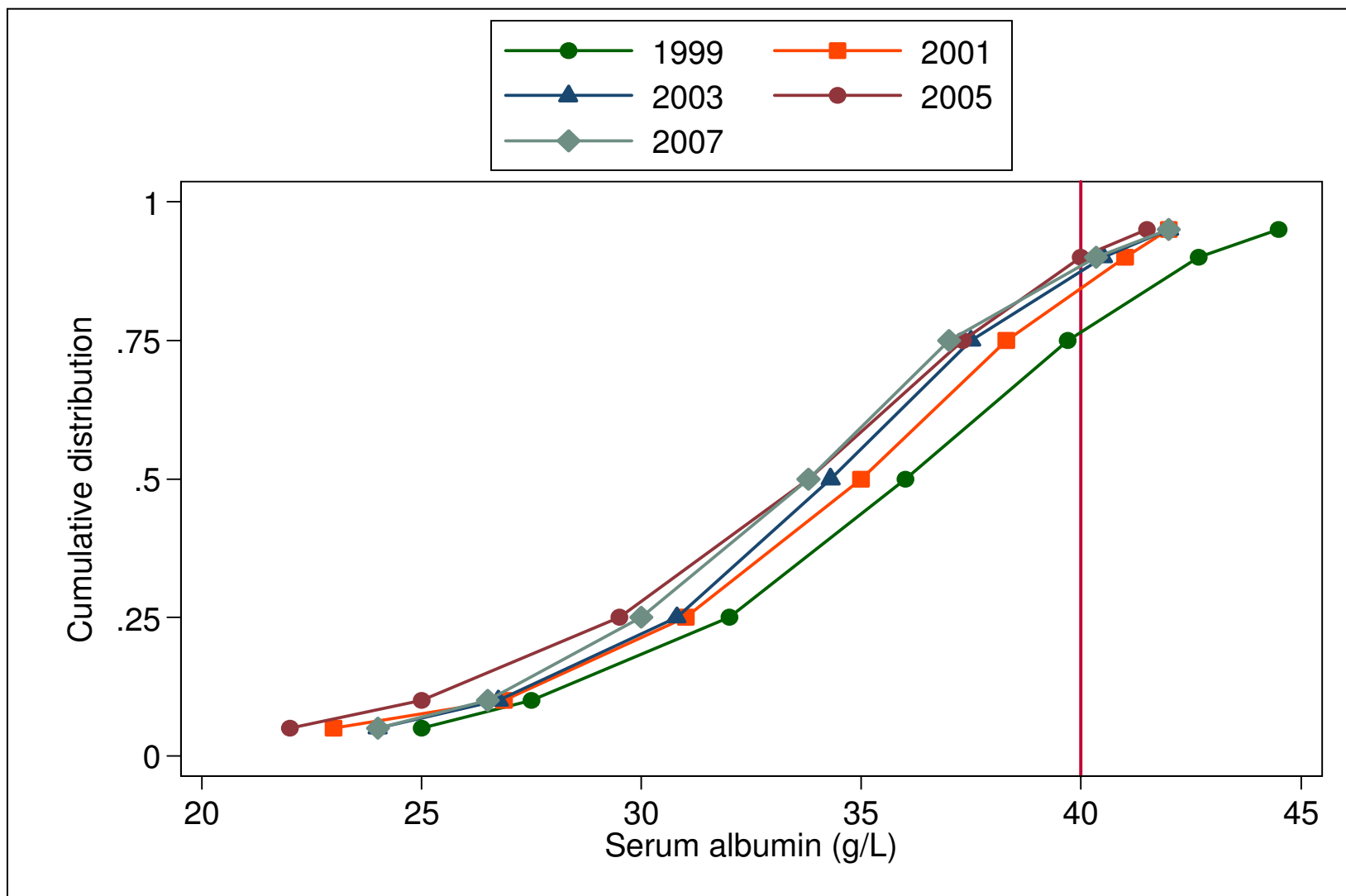
Figure 8.1.1: Cumulative distribution of Albumin, HD patients 1998-2007



**Table 8.1.2: Distribution of serum albumin, CAPD patients, 1998- 2007**

year	No of subjects	Mean	SD	Median	LQ	UQ	% patients <30g/L	% patients 30- =<35g/L	% patients 35-<40g/L	% patients ≥40g/L
1998	536	35.8	6.7	36	32	39.7	16	25	35	24
1999	597	34.1	6.6	34	30.8	38	21	33	32	14
2000	640	34.3	6.1	35	31	38.3	20	28	37	14
2001	750	33.3	6.2	33.6	29.3	37	27	33	28	12
2002	862	33.9	5.9	34.3	30.8	37.5	21	35	33	12
2003	1180	33.3	5.8	33.8	29.7	37.3	26	33	30	11
2004	1284	33	6	33.8	29.5	37.3	27	32	30	11
2005	1346	33.2	6.4	33.3	29.5	37	27	33	30	10
2006	1498	33.5	6.1	33.8	30	37	25	33	30	12
2007	1753	33.6	6.2	34	30	37.8	25	31	30	14

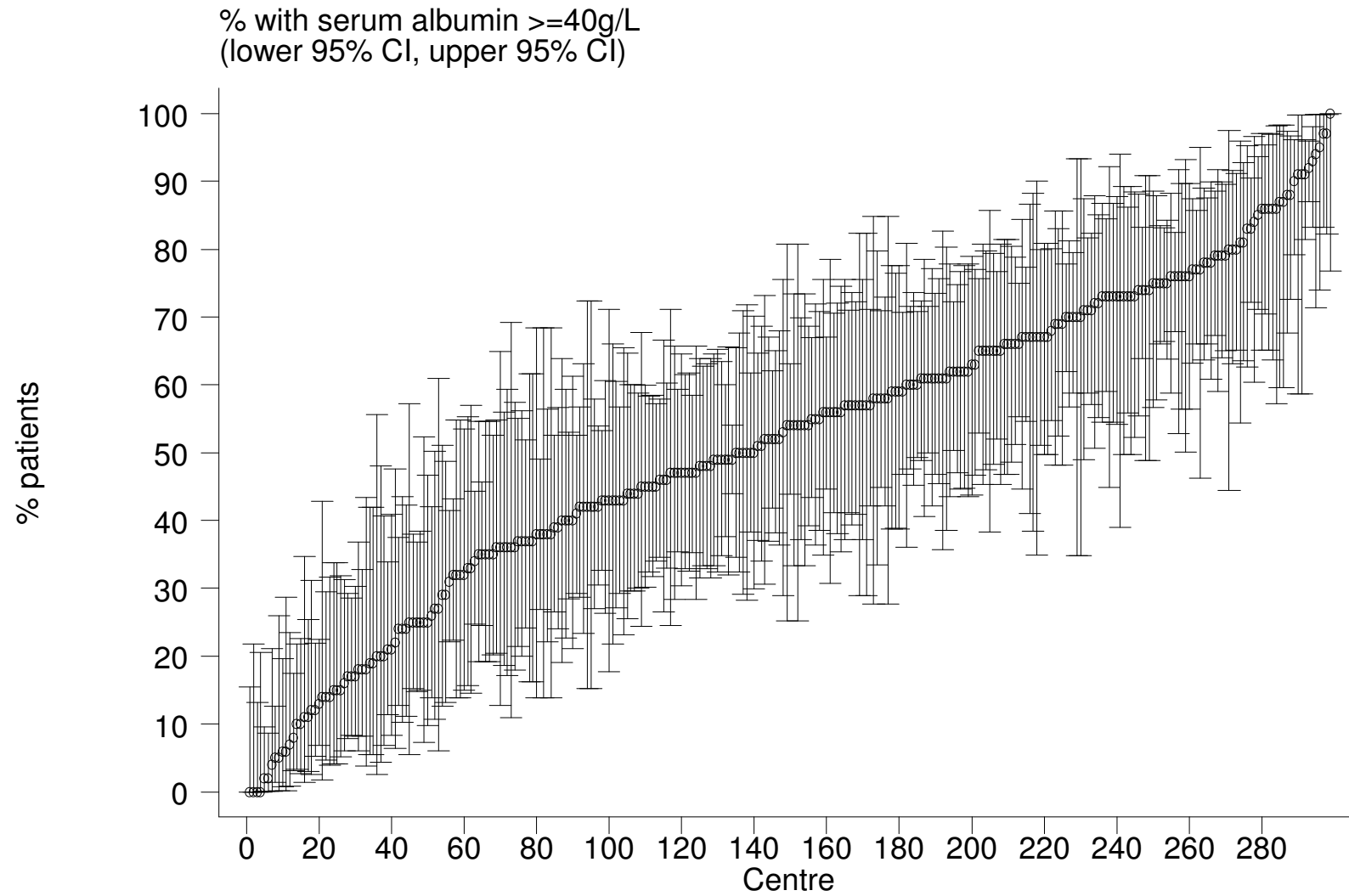
Figure 8.1.2 : Cumulative distribution of Albumin, CAPD patients 1998-2007



**Table 8.1.3: Variation in Proportion of patients with serum albumin  $\geq$  40g/L among HD centres 2007**

year	No of centers	Min	5 <sup>th</sup> centile	LQ	Median	UQ	95 <sup>th</sup> centile	Max
1998	49	7	16	31	54	78	95	96
1999	69	2	8	22	50	65	89	100
2000	94	0	6	25	43	62	83	93
2001	116	0	3	17	39.5	56.5	82	100
2002	141	0	9	26	44	62	83	100
2003	170	0	18	40	55	70	92	100
2004	198	0	10	35	57.5	73	90	100
2005	228	4	13	42	56	70	87	100
2006	279	0	9	36	53	70	87	100
2007	299	0	10	37	54	69	87	100

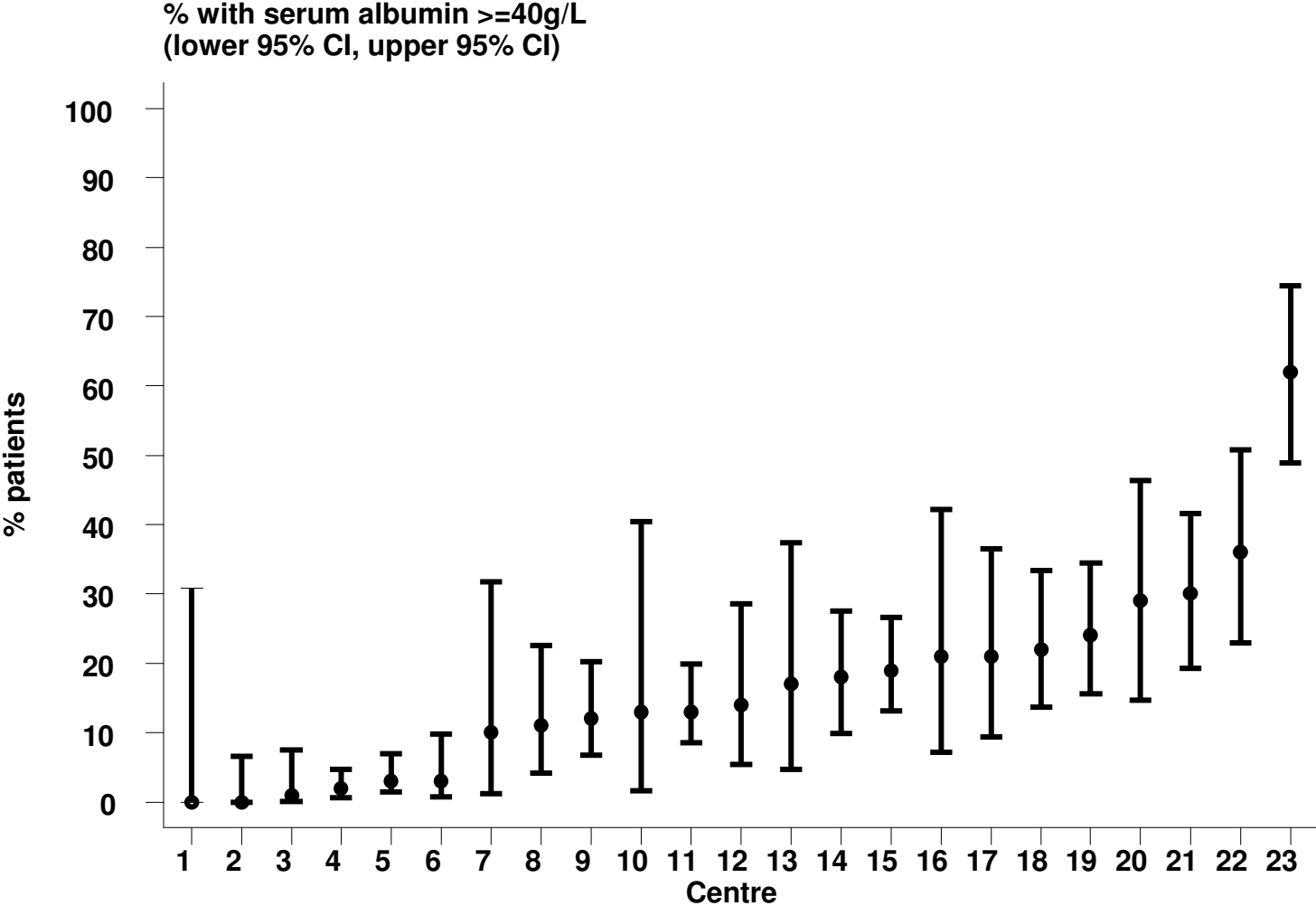
**Figure 8.1.3: Variation in Proportion of patients with serum albumin  $\geq 40\text{g/L}$ , HD centres 2007**



**Table 8.1.4: Variation in Proportion of patients with serum albumin  $\geq$  40g/L among CAPD centres 2007**

year	No of centers	Min	5 <sup>th</sup> centile	LQ	Median	UQ	95 <sup>th</sup> centile	Max
1998	9	5	5	18	27	34	40	40
1999	10	2	2	8	14.5	18	29	29
2000	11	0	0	5	13	28	42	42
2001	12	1	1	4.5	16	27.5	36	36
2002	15	5	5	6	12	20	36	36
2003	19	1	1	9	14	19	58	58
2004	19	2	2	8	12	21	35	35
2005	20	0	0.5	6	11.5	23.5	28	29
2006	22	1	1	6	13	22	42	72
2007	23	0	0	3	14	22	36	62

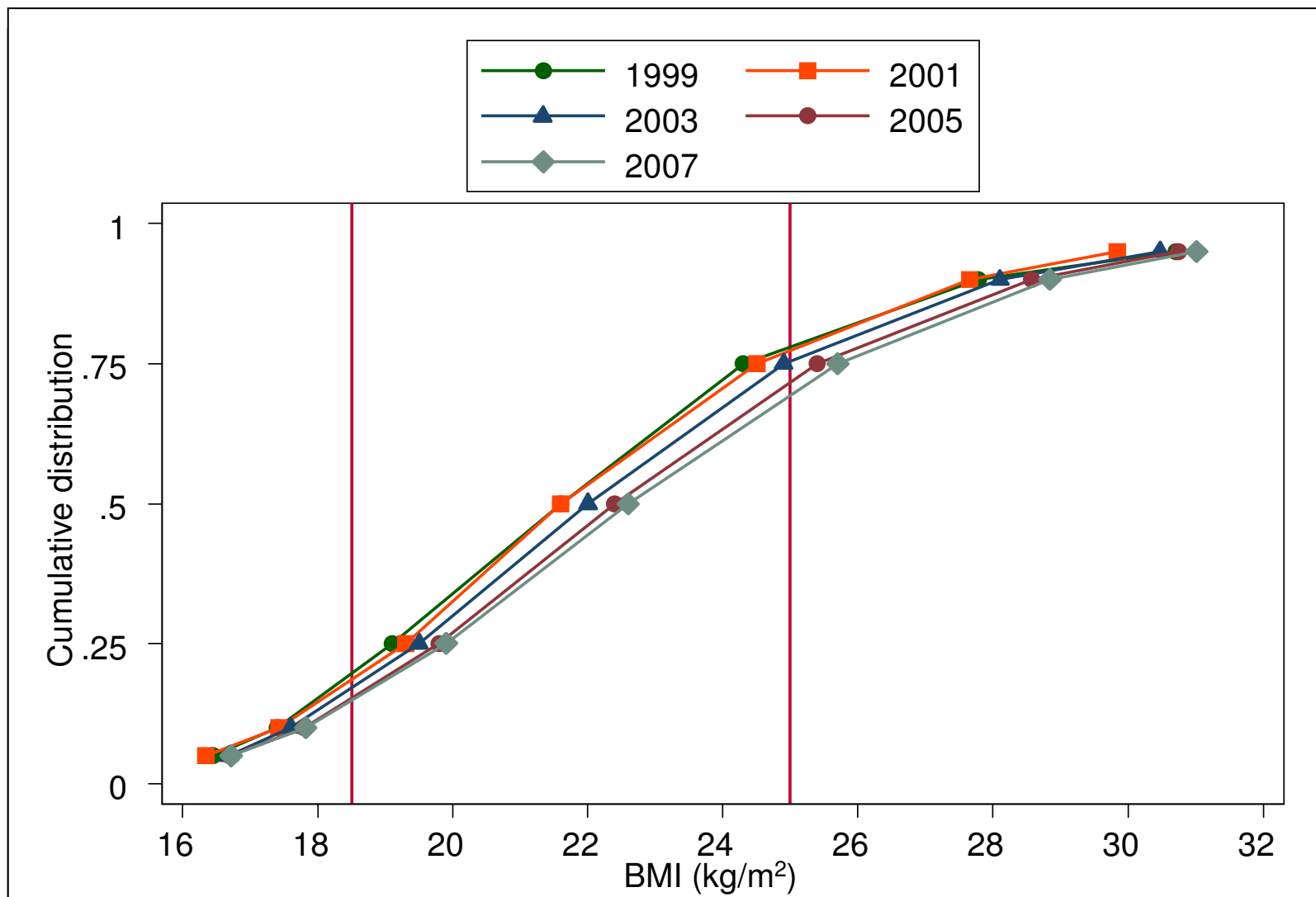
Figure 8.1.4: Variation in Proportion of patients with serum albumin  $\geq 40\text{g/L}$ , CAPD centres 2007



**Table 8.2.1: Distribution of BMI, HD patients, 1998- 2007**

year	n	Mean	SD	Median	LQ	UQ	% patients <18.5	% patients 18.5-25	% patients >=25
1998	1980	24.1	18.3	21.6	19.1	24.3	19	60	21
1999	2710	23.5	15.9	21.4	19.2	24.4	18	61	21
2000	3858	22.9	11.7	21.6	19.3	24.5	18	60	22
2001	4549	23	11	21.9	19.3	24.7	18	59	23
2002	5100	23.2	10.6	22	19.5	24.9	16	59	24
2003	5984	23.1	9.7	22.1	19.5	25.1	16	58	26
2004	6767	23.3	9	22.4	19.8	25.4	14	58	28
2005	7830	23.4	9	22.5	19.8	25.6	14	57	29
2006	9767	23.3	7.9	22.6	19.9	25.7	14	56	29
2007	10438	23.5	8.5	22.7	19.9	25.8	14	56	30

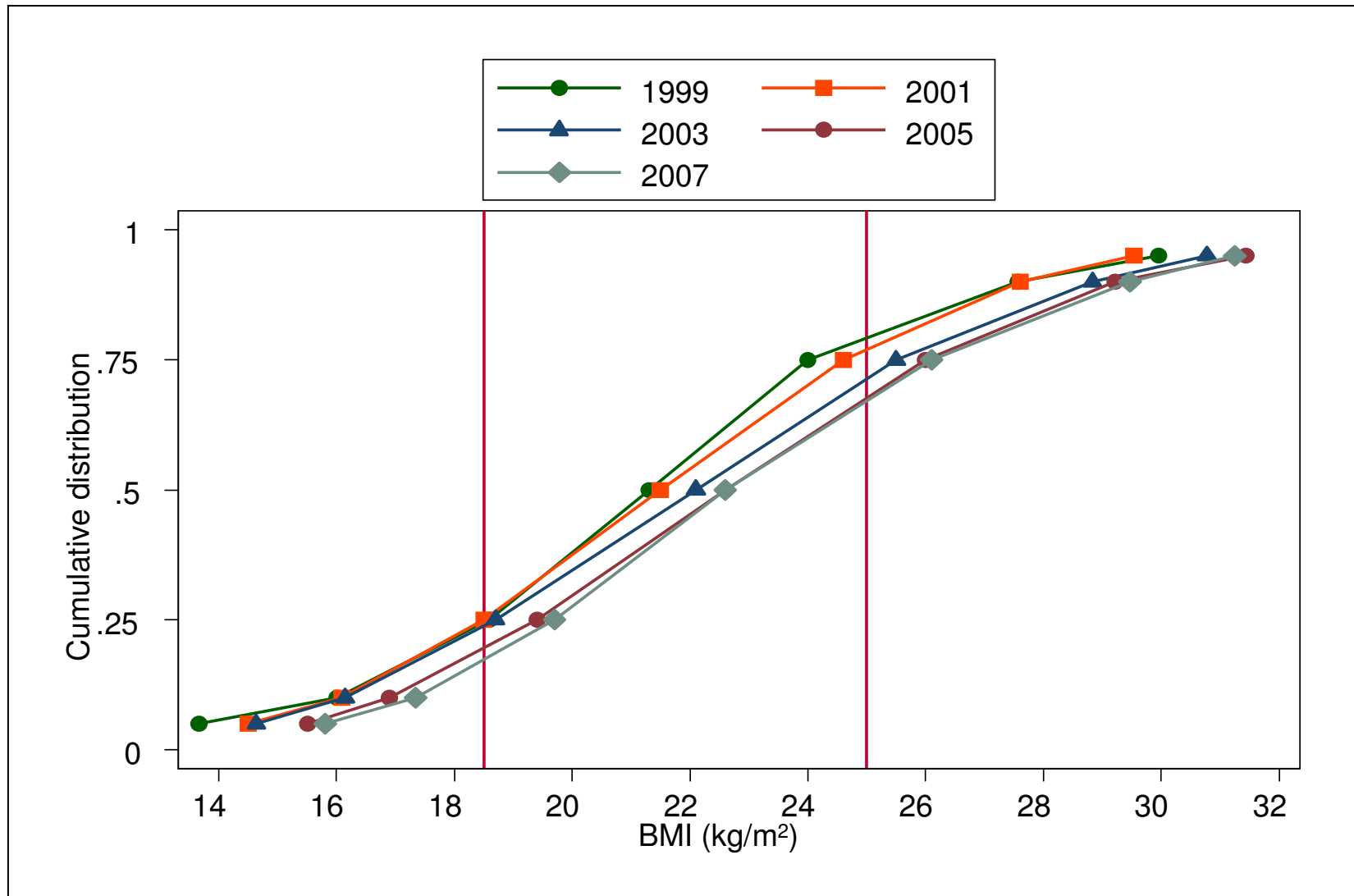
Figure 8.2.1: Cumulative distribution of BMI, HD patients 1998-2007



**Table 8.2.2: Distribution of BMI, CAPD patients 1998-2007**

year	n	Mean	SD	Median	LQ	UQ	% patients <18.5	% patients 18.5-25	% patients >=25
1998	491	22	11.1	21.3	18.6	24	23	57	20
1999	552	21.7	4.5	21.5	18.8	24.4	23	56	22
2000	603	21.6	4.5	21.5	18.5	24.6	25	53	22
2001	665	22	5.1	21.7	18.7	25.2	24	50	26
2002	752	22.2	5	22.1	18.7	25.5	24	47	30
2003	1071	22.9	6.8	22.5	19.2	25.8	20	50	30
2004	1175	23.1	7.2	22.6	19.4	26	18	51	31
2005	1223	23	7.2	22.5	19.4	25.8	20	50	30
2006	1419	23.3	8.2	22.6	19.7	26.1	16	51	33
2007	1613	23.5	5.8	22.9	20	26.4	14	51	35

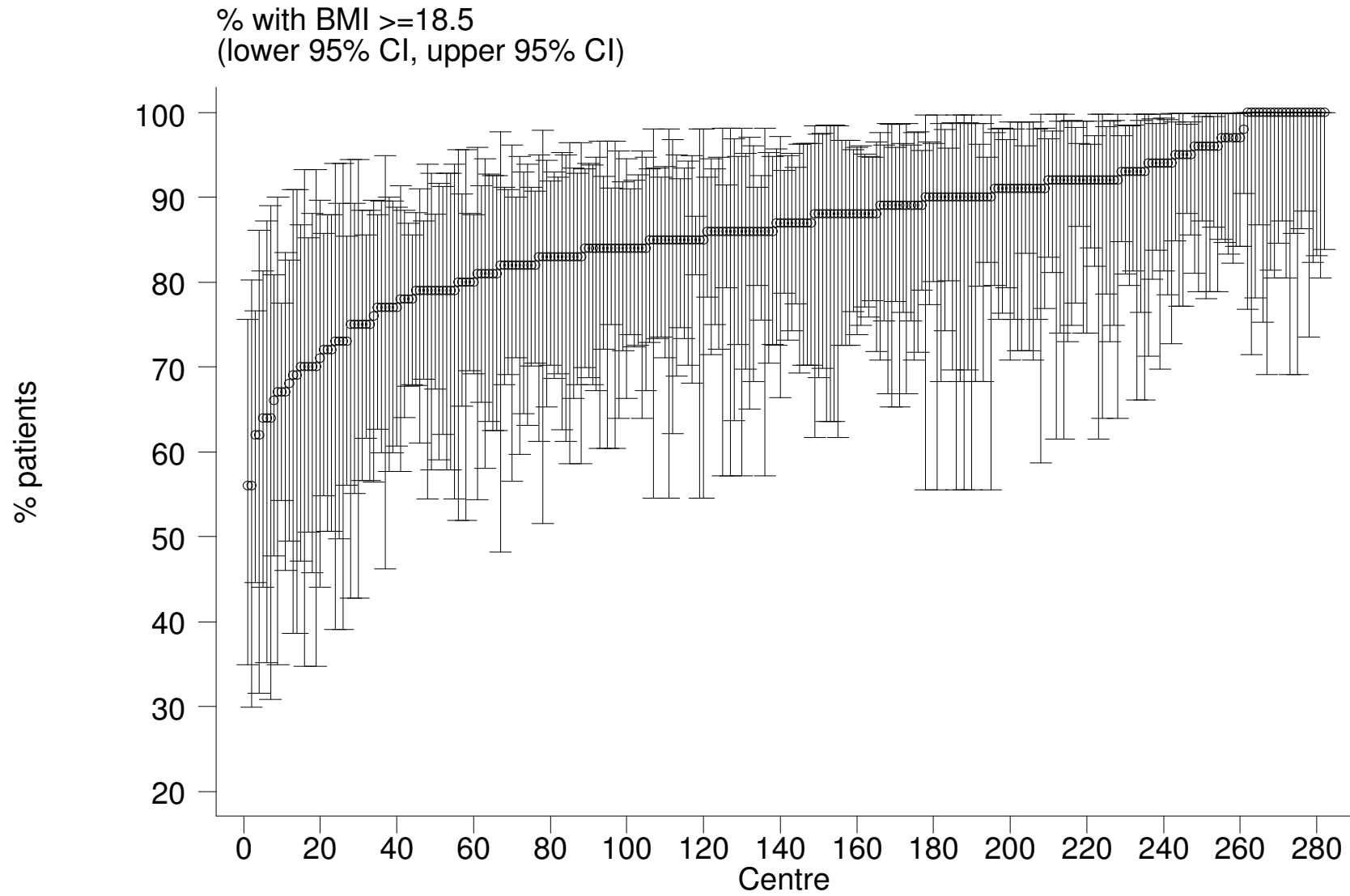
Figure 8.2.2: Cumulative distribution of BMI, CAPD patients 1998-2007



**Table 8.2.3: Variation in Proportion of patients with BMI  $\geq$  18.5 among HD centres 2007**

year	No of centers	Min	5 <sup>th</sup> centile	LQ	Median	UQ	95 <sup>th</sup> centile	Max
1998	47	59	68	76	81	86	93	100
1999	70	57	62	78	82	90	94	100
2000	95	55	65	75	82	89	100	100
2001	111	60	68	77	83	89	94	100
2002	133	55	67	78	85	90	100	100
2003	156	60	70	79	84	91	100	100
2004	187	62	68	81	86	91	100	100
2005	206	64	70	81	88	93	100	100
2006	263	53	71	80	87	92	100	100
2007	282	56	70	82	87	92	100	100

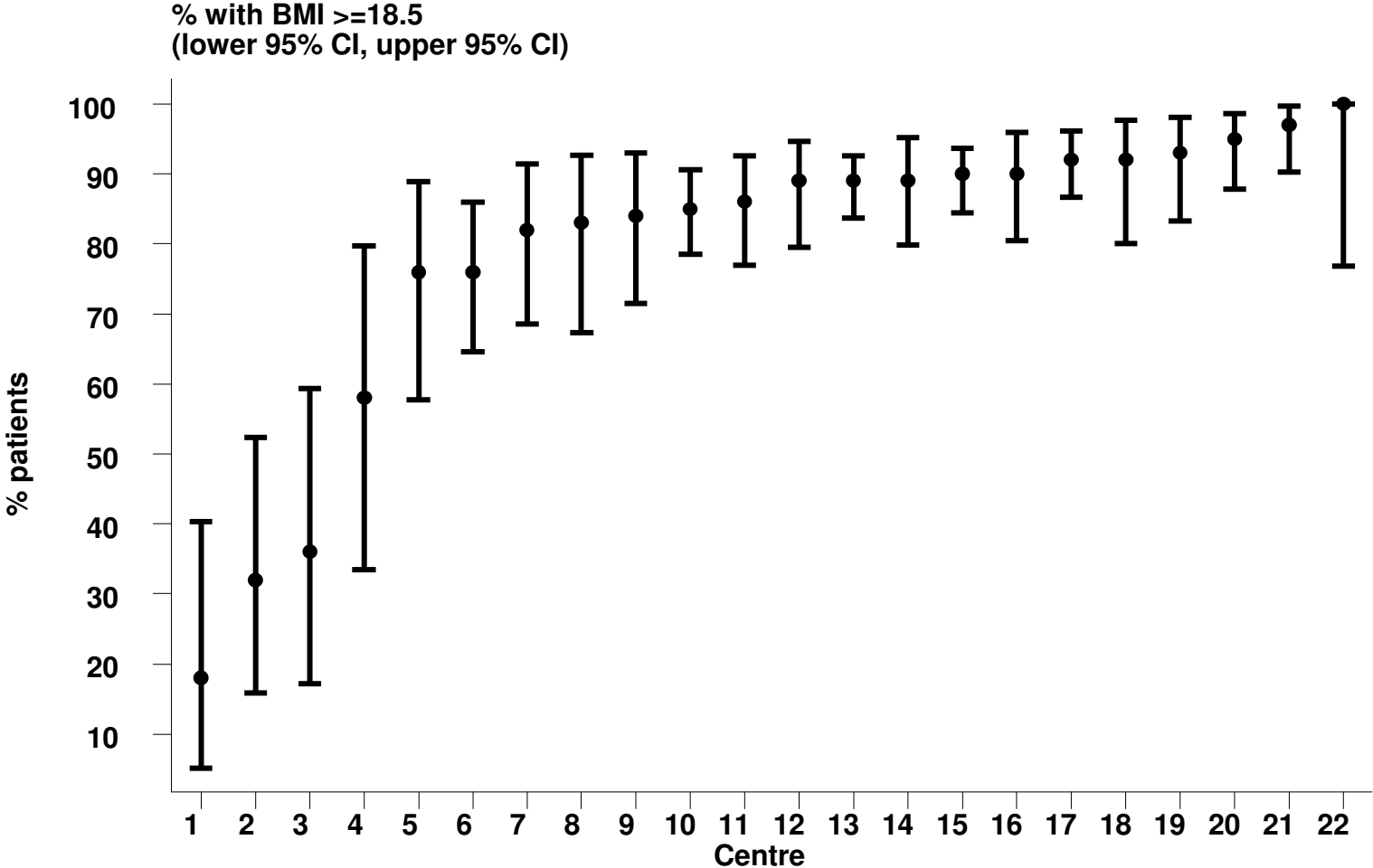
**Figure 8.2.3: Variation in Proportion of patients with BMI  $\geq 18.5$  among HD centres 2007**



**Table 8.2.4: : Variation in Proportion of patients with BMI  $\geq$  18.5 among CAPD centres 2007**

year	No of centers	Min	5 <sup>th</sup> centile	LQ	Median	UQ	95 <sup>th</sup> centile	Max
1998	9	0	0	71	80	87	91	91
1999	9	0	0	71	75	83	92	92
2000	11	11	11	63	76	87	90	90
2001	11	15	15	72	77	88	92	92
2002	15	17	17	63	80	84	87	87
2003	19	17	17	63	81	87	96	96
2004	19	27	27	71	82	89	94	94
2005	18	32	32	69	84	87	91	91
2006	22	19	29	78	84.5	91	92	93
2007	22	18	32	76	87.5	92	97	100

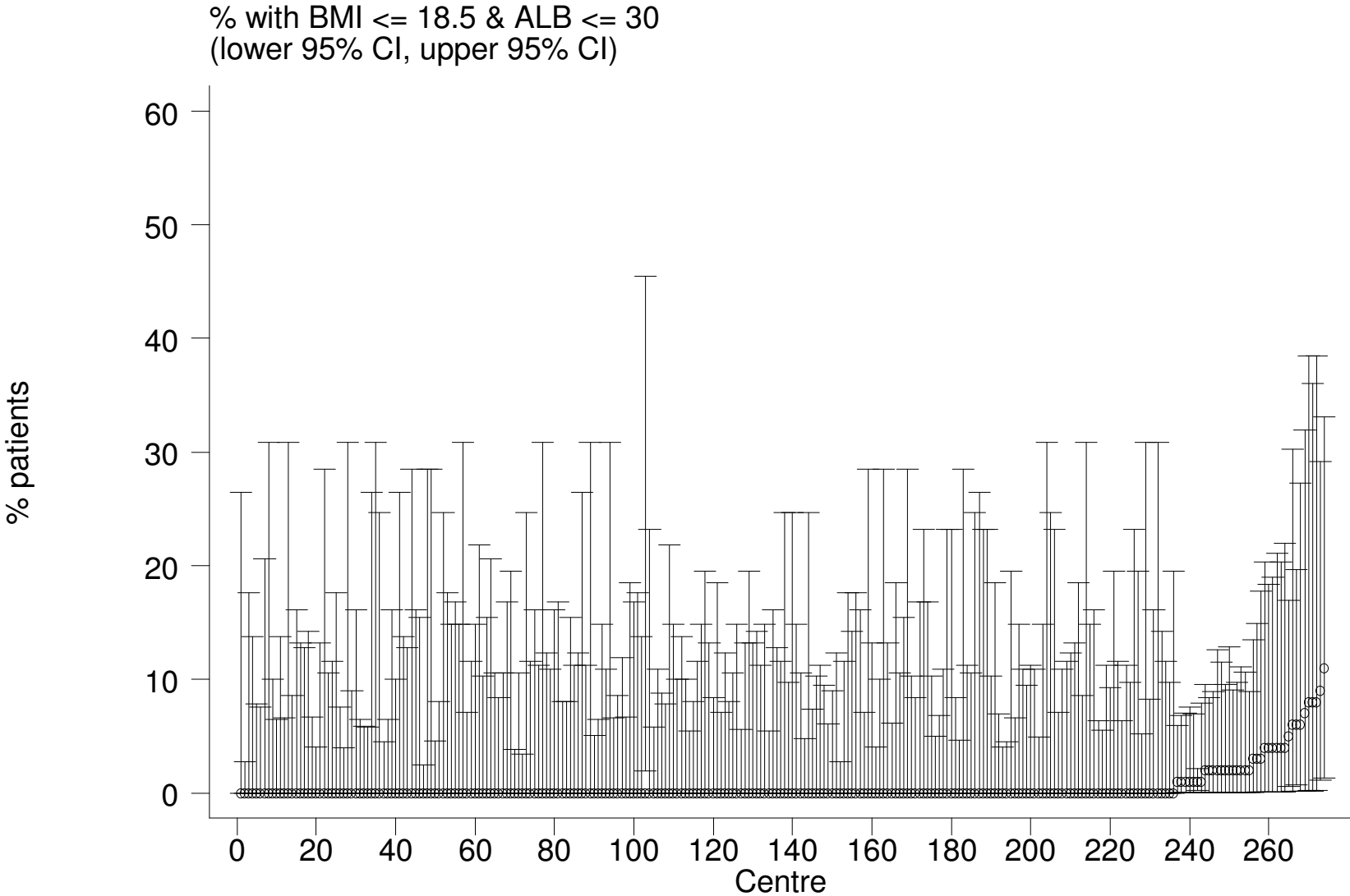
Figure 8.2.4: Indicates that only one center reported the lowest proportion of patients achieving the target BMI  $\geq 18.5$  whilst 18 centers reported higher proportions ( $>75\%$ ).



**Table 8.2.5: Variation in Proportion of patients with BMI  $\leq$  18.5 and serum albumin  $\leq$  30 g/dL among HD centres 2007**

Year	No of centers	Min	5 <sup>th</sup> centile	LQ	Median	UQ	95 <sup>th</sup> centile	Max
1998	47	0	0	0	0	1	6	8
1999	63	0	0	0	0	2	5	10
2000	85	0	0	0	0	1	9	28
2001	104	0	0	0	0	0	6	9
2002	123	0	0	0	0	0	5	13
2003	151	0	0	0	0	0	5	10
2004	180	0	0	0	0	0	4	9
2005	199	0	0	0	0	0	5	14
2006	251	0	0	0	0	0	8	36
2007	275	0	0	0	0	0	4	11

**Figure 8.2.5: Variation in Proportion of patients with BMI  $\leq$  18.5 and serum albumin  $\leq$  30 g/dL among HD centres 2007**



**Table 8.2.6: Variation in Proportion of patients with BMI  $\leq$  18.5 and serum albumin  $\leq$  30 g/dL among CAPD centres 2007**

year	No of centers	Min	5 <sup>th</sup> centile	LQ	Median	UQ	95 <sup>th</sup> centile	Max
1998	9	0	0	0	0	3	5	5
1999	9	0	0	0	3	6	29	29
2000	11	0	0	2	5	8	12	12
2001	11	2	2	4	5	9	15	15
2002	15	0	0	0	3	7	20	20
2003	19	0	0	0	4	9	18	18
2004	19	0	0	0	3	6	10	10
2005	18	0	0	3	5	7	12	12
2006	22	0	0	2	4	6	12	27
2007	22	0	0	1	4	8	14	24

Figure 8.2.6: Variation in Proportion of patients with BMI  $\leq 18.5$  and serum albumin  $\leq 30$  g/dL among CAPD centres 2007

