

Chapter 5: Quality Of Life and Rehabilitation Outcomes of Patients on Dialysis

List of Editors

16th Report of the Malaysian Dialysis and Transplant Registry 2008

Table 5.1: Cumulative distribution of QoL-Index score in relation to dialysis modality, All dialysis patients 1999-2008

| Dialysis modality | PD | HD |
|--------------------|------|-------|
| Number of patients | 3413 | 18298 |
| Centile | | |
| 0 | 0 | 0 |
| 0.05 | 5 | 4 |
| 0.1 | 6 | 5 |
| 0.25 (LQ) | 8 | 7 |
| 0.5 (median) | 10 | 9 |
| 0.75 (UQ) | 10 | 10 |
| 0.9 | 10 | 10 |
| 0.95 | 10 | 10 |
| 1 | 10 | 10 |

Figure 5.1: Cumulative distribution of QoL-Index score in relation to Dialysis Modality, All Dialysis patients 1999- 2008

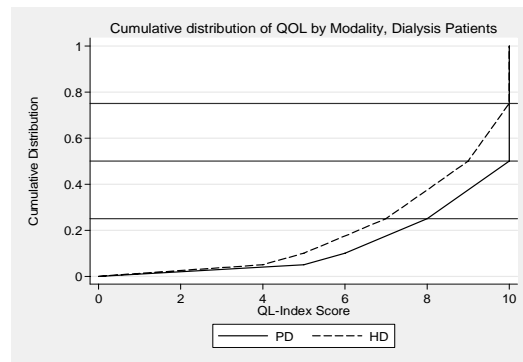


Table 5.2: Cumulative distribution of QoL-Index score in relation to DM, All dialysis patients 1999-2008

| Diabetes mellitus | No | Yes |
|--------------------|-------|-------|
| Number of patients | 10662 | 11049 |
| Centile | | |
| 0 | 0 | 0 |
| 0.05 | 5 | 4 |
| 0.1 | 7 | 5 |
| 0.25 (LQ) | 8 | 6 |
| 0.5 (median) | 10 | 8 |
| 0.75 (UQ) | 10 | 10 |
| 0.9 | 10 | 10 |
| 0.95 | 10 | 10 |
| 1 | 10 | 10 |

Figure 5.2: Cumulative distribution of QoL-Index score in relation to DM, All Dialysis patients, 1999-2008

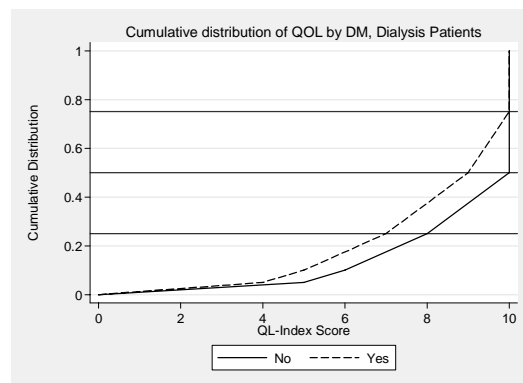


Table 5.3: Cumulative distribution of QoL-index score in relation to Gender, All Dialysis patients 1999-2008

| Gender | Male | Female |
|--------------------|-------|--------|
| Number of patients | 12017 | 9694 |
| Centile | | |
| 0 | 0 | 0 |
| 0.05 | 5 | 4 |
| 0.1 | 6 | 5 |
| 0.25 (LQ) | 7 | 7 |
| 0.5 (median) | 9 | 9 |
| 0.75 (UQ) | 10 | 10 |
| 0.9 | 10 | 10 |
| 0.95 | 10 | 10 |
| 1 | 10 | 10 |

Figure 5.3: Cumulative distribution of QoL-Index score in relation to Gender, All Dialysis patients, 1999- 2008

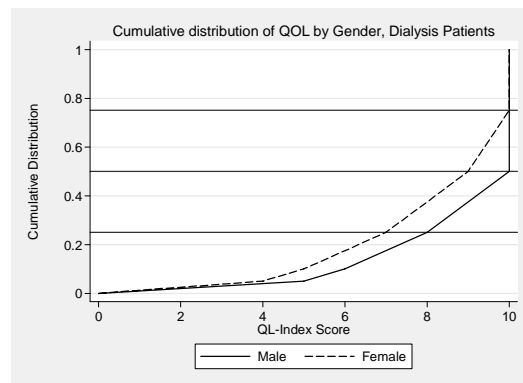


Table 5.4: Cumulative distribution of QoL-index score in relation to Age, All Dialysis patients 1999-2008

| Age group | <20 | 20-39 | 40-59 | >=60 |
|--------------------|-----|-------|-------|------|
| Number of patients | 799 | 3516 | 10379 | 7017 |
| Centile | | | | |
| 0 | 0 | 0 | 0 | 0 |
| 0.05 | 6 | 6 | 5 | 4 |
| 0.1 | 7 | 8 | 6 | 5 |
| 0.25 (LQ) | 9 | 9 | 8 | 6 |
| 0.5 (median) | 10 | 10 | 9 | 8 |
| 0.75 (UQ) | 10 | 10 | 10 | 9 |
| 0.9 | 10 | 10 | 10 | 10 |
| 0.95 | 10 | 10 | 10 | 10 |
| 1 | 10 | 10 | 10 | 10 |

Figure 5.4: Cumulative distribution of QoL-Index score in relation to Age, All Dialysis patients, 1999-2008

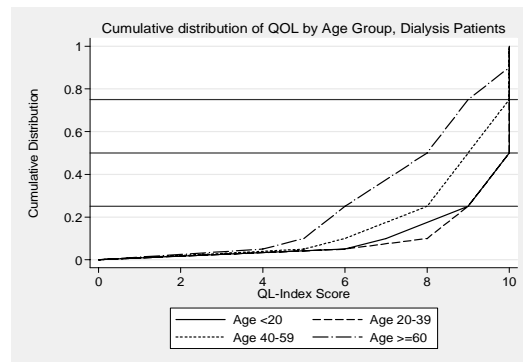


Table 5.5: Cumulative distribution of QoL-Index score in relation to year of entry, HD patients 1999-2008

| Year of Entry | 1999 | 2000 | 2001 | 2002 | 2003 | 2004 | 2005 | 2006 | 2007 | 2008 |
|--------------------|------|------|------|------|------|------|------|------|------|------|
| Number of patients | 1041 | 1274 | 1439 | 1649 | 1708 | 2033 | 2122 | 2458 | 2460 | 2114 |
| Centile | | | | | | | | | | |
| 0 | 0 | 0 | 0 | 0 | 0 | 0 | 0 | 0 | 0 | 0 |
| 0.05 | 5 | 5 | 5 | 4 | 5 | 4 | 4 | 4 | 4 | 4 |
| 0.1 | 6 | 6 | 5 | 5 | 5 | 5 | 5 | 5 | 5 | 5 |
| 0.25 (LQ) | 7 | 7 | 7 | 7 | 7 | 7 | 7 | 7 | 7 | 7 |
| 0.5 (median) | 9 | 9 | 9 | 9 | 9 | 9 | 9 | 9 | 9 | 9 |
| 0.75 (UQ) | 10 | 10 | 10 | 10 | 10 | 10 | 10 | 10 | 10 | 10 |
| 0.9 | 10 | 10 | 10 | 10 | 10 | 10 | 10 | 10 | 10 | 10 |
| 0.95 | 10 | 10 | 10 | 10 | 10 | 10 | 10 | 10 | 10 | 10 |
| 1 | 10 | 10 | 10 | 10 | 10 | 10 | 10 | 10 | 10 | 10 |

Figure 5.5: Cumulative distribution of QoL-Index score in relation to year of entry, HD patients 1999-2008

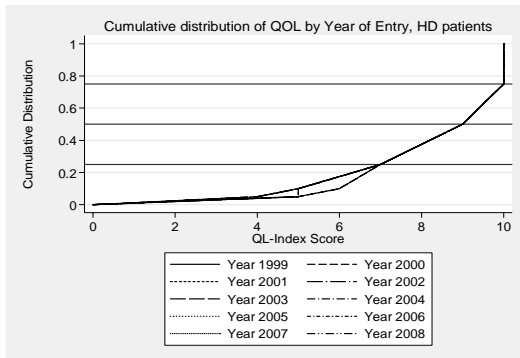


Table 5.6: Cumulative distribution of QoL-Index score in relation to year of entry, PD patients 1999-2008

| Year of Entry | 1999 | 2000 | 2001 | 2002 | 2003 | 2004 | 2005 | 2006 | 2007 | 2008 |
|--------------------|------|------|------|------|------|------|------|------|------|------|
| Number of patients | 1041 | 1274 | 1439 | 1649 | 1708 | 2033 | 2122 | 2458 | 2460 | 2114 |
| Centile | | | | | | | | | | |
| 0 | 0 | 0 | 0 | 0 | 0 | 0 | 0 | 0 | 0 | 0 |
| 0.05 | 5 | 5 | 5 | 4 | 5 | 4 | 4 | 4 | 4 | 4 |
| 0.1 | 6 | 6 | 5 | 5 | 5 | 5 | 5 | 5 | 5 | 5 |
| 0.25 (LQ) | 7 | 7 | 7 | 7 | 7 | 7 | 7 | 7 | 7 | 7 |
| 0.5 (median) | 9 | 9 | 9 | 9 | 9 | 9 | 9 | 9 | 9 | 9 |
| 0.75 (UQ) | 10 | 10 | 10 | 10 | 10 | 10 | 10 | 10 | 10 | 10 |
| 0.9 | 10 | 10 | 10 | 10 | 10 | 10 | 10 | 10 | 10 | 10 |
| 0.95 | 10 | 10 | 10 | 10 | 10 | 10 | 10 | 10 | 10 | 10 |
| 1 | 10 | 10 | 10 | 10 | 10 | 10 | 10 | 10 | 10 | 10 |

Figure 5.6: Cumulative distribution of QoL-Index score in relation to year of entry, PD patients 1999-2008

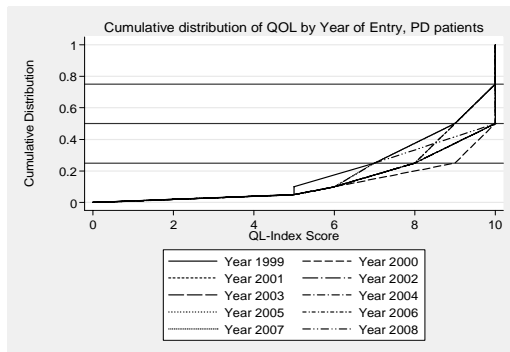


Table 5.7: Work related rehabilitation in relation to modality, dialysis patients, 1999 to 2008

| Modality | PD | | HD | |
|---|------|----|------|----|
| | N | % | N | % |
| Number of patients | 1112 | | 7199 | |
| Able to return for Full or Part time for pay* | 792 | 71 | 5013 | 70 |
| Unable to work for pay | 320 | 29 | 2186 | 30 |

Table 5.8: Work related rehabilitation in relation to year of entry, HD patients 1999 to 2008

| Year | 1999 | 2000 | 2001 | 2002 | 2003 | 2004 | 2005 | 2006 | 2007 | 2008 | |
|---|------|------|------|------|------|------|------|------|------|------|-----|
| Number of patients | 534 | 591 | 604 | 690 | 707 | 807 | 788 | 906 | 850 | 722 | |
| Able to return for Full or Part time for pay* | No | 405 | 455 | 439 | 510 | 516 | 555 | 546 | 614 | 555 | 418 |
| | % | 76 | 77 | 73 | 74 | 73 | 69 | 69 | 68 | 65 | 58 |
| Unable to work for pay | No | 129 | 136 | 165 | 180 | 191 | 252 | 242 | 292 | 295 | 304 |
| | % | 24 | 23 | 27 | 26 | 27 | 31 | 31 | 32 | 35 | 42 |

Table 5.9: Work related rehabilitation in relation to year of entry, PD patients 1999 to 2008

| Year | 1999 | 2000 | 2001 | 2002 | 2003 | 2004 | 2005 | 2006 | 2007 | 2008 | |
|---|------|------|------|------|------|------|------|------|------|------|----|
| Number of patients | 48 | 64 | 85 | 119 | 140 | 103 | 112 | 142 | 152 | 147 | |
| Able to return for Full or Part time for pay* | No | 35 | 43 | 69 | 90 | 108 | 73 | 81 | 99 | 101 | 93 |
| | % | 73 | 67 | 81 | 76 | 77 | 71 | 72 | 70 | 66 | 63 |
| Unable to work for pay | No | 13 | 21 | 16 | 29 | 32 | 30 | 31 | 43 | 51 | 54 |
| | % | 27 | 33 | 19 | 24 | 23 | 29 | 28 | 30 | 34 | 37 |

Table 11.7b: Risk factors for seroconversion to anti-HCV positive among sero-negative patients in PD

| Risk factor | Number of patients | Risk Ratio | 95% CI | p-value |
|-------------------------------------|--------------------|------------|---------------|---------|
| Age | | | | |
| (1) <=20 ref | 4 | 1.00 | | |
| (2) 21-40 | 22 | 3.54 | (1.21, 10.32) | 0.021 |
| (3) 41-60 | 26 | 1.99 | (0.69, 5.72) | 0.202 |
| (4) >60 | 3 | 0.35 | (0.08, 1.58) | 0.172 |
| Gender | | | | |
| (1) Female ref | 28 | 1.00 | | |
| (2) Male | 27 | 0.97 | (0.57, 1.65) | 0.900 |
| Diabetes | | | | |
| (1) No ref | 46 | 1.00 | | |
| (2) Yes | 9 | 0.23 | (0.11, 0.47) | 0.000 |
| Switch from PD to HD | | | | |
| (1) No ref | 35 | 1.00 | | |
| (2) Yes | 20 | 6.81 | (3.89, 11.93) | 0.000 |
| Previous Renal Transplant | | | | |
| (1) No ref | 48 | 1.00 | | |
| (2) Yes | 7 | 2.50 | (1.12, 5.58) | 0.026 |
| History of Blood Transfusion | | | | |
| (1) No ref | 23 | 1.00 | | |
| (2) Yes | 32 | 2.29 | (1.33, 3.92) | 0.003 |