

**Chapter 9:  
Blood Pressure Control  
and Dyslipidaemia  
in Patients on Dialysis**

S. Prasad Menon  
Lee Wan Tin

*16th Report of the Malaysian Dialysis and Transplant Registry 2008*

**Table 9.1.1: Distribution of pre dialysis systolic blood pressure, HD patients 1999-2008**

Year	No. of subjects	Mean	SD	Median	LQ	UQ	% Patients <120 mmHg	% Patients 120-<140 mmHg	% Patients 140-<160 mmHg	% Patients 160-<180 mmHg	% Patients ≥160 mmHg
1999	2965	148.7	20.8	148.5	135.3	162.2	8	25	38	23	6
2000	4310	148	20.6	147.8	134.8	161.7	9	25	38	23	6
2001	5147	148.8	20.9	148.8	134.9	162.6	8	25	37	23	7
2002	5911	149.2	20.6	149	135.8	163.3	8	24	38	24	6
2003	6834	149.7	20.2	149.8	136.4	162.9	7	24	39	23	7
2004	7937	149.7	20	150	136.6	163.1	7	23	39	25	6
2005	9221	149.9	19.4	149.6	137	162.8	6	24	40	24	6
2006	11526	151.4	19.3	151.1	138.8	164	5	22	41	25	7
2007	12830	152.1	19.1	151.9	139.3	164.7	5	21	40	27	7
2008	15195	152	19	151.9	139.4	164.6	4	22	40	27	7

**Table 9.1.2: Distribution of pre dialysis systolic blood pressure, PD patients 1999-2008**

Year	No. of subjects	Mean	SD	Median	LQ	UQ	% Patients <120 mmHg	% Patients 120-<140 mmHg	% Patients 140-<160 mmHg	% Patients 160-<180 mmHg	% Patients ≥160 mmHg
1999	576	141	19.8	140	127.2	156	14	35	34	15	2
2000	638	137.2	20.4	136.1	123.3	150	18	39	29	13	2
2001	739	139	20.2	137.5	125.8	151.7	16	38	30	13	3
2002	843	139.8	20.5	140	127.1	151.8	14	36	34	12	4
2003	1154	140.5	20.1	140	126.7	154.1	15	35	32	15	3
2004	1259	141	19.8	140.9	127.4	154.5	13	34	36	14	3
2005	1351	140.4	20.2	139.3	127.3	153.2	13	38	32	14	3
2006	1523	139.3	19.3	138.4	126.7	151.6	14	40	32	11	2
2007	1753	139.9	19.2	139.4	127	152.8	15	37	33	13	2
2008	2049	139.4	18.7	139.5	126.7	151.4	15	36	35	12	2

**Table 9.1.3: Distribution of pre dialysis diastolic blood pressure, HD patients 1999-2008**

Year	No. of subjects	Mean	SD	Median	LQ	UQ	% Patients <70 mmHg	% Patients 70-<80 mmHg	% Patients 80-<90 mmHg	% Patients 90-<100 mmHg	% Patients ≥100 mmHg
1999	2965	83.5	10.5	83.5	77.1	90	10	24	40	21	6
2000	4309	82.2	10.4	82.3	75.7	89	11	28	39	18	4
2001	5146	81.6	10.4	81.7	75	88.3	12	30	37	17	4
2002	5907	81.2	10.4	81.3	74.5	88.1	13	30	37	16	3
2003	6832	80.6	10.2	80.8	73.9	87.2	14	32	37	14	3
2004	7935	80.3	10.2	80.3	73.6	86.9	15	33	36	14	3
2005	9221	80.3	10.6	80.4	73.5	87	15	32	36	14	3
2006	11525	80.4	11.1	80.4	73.3	87.1	16	32	35	14	3
2007	12830	80.4	11.1	80.2	73.1	87	16	32	34	14	4
2008	15193	79.8	11.2	79.6	72.5	86.7	18	33	33	13	3

**Table 9.1.4: Distribution of pre dialysis diastolic blood pressure, PD patients 1999-2008**

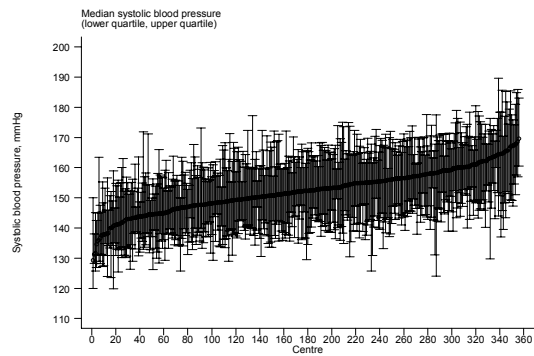
Year	No. of subjects	Mean	SD	Median	LQ	UQ	% Patients <70 mmHg	% Patients 70-<80 mmHg	% Patients 80-<90 mmHg	% Patients 90-<100 mmHg	% Patients ≥100 mmHg
1999	576	84	10.9	84.2	77.9	90	9	20	44	20	7
2000	638	82.9	11	83.3	76.6	89.6	10	24	41	20	5
2001	739	83.1	10.9	82.7	76.4	89.6	9	29	38	18	6
2002	843	82.8	10.8	83.4	76.1	90	11	24	41	21	5
2003	1156	82.2	10.9	82.3	75.6	89.4	12	26	38	19	4
2004	1258	82.2	10.5	83	75.4	89.2	11	28	38	18	4
2005	1351	81.6	10.9	82.2	75	88.3	12	29	40	15	5
2006	1522	81.3	10.6	81.5	74.8	88	13	28	40	15	3
2007	1752	80.6	10.7	80.7	74	86.9	14	32	38	12	3
2008	2049	79.7	10.1	80	73	86.3	16	32	36	13	2

**Table 9.1.5: Variation in BP control among HD centers 2008**

(a) Median systolic blood pressure among HD patients, HD centers

Year	No. of centres	Min	5 <sup>th</sup> Centile	LQ	Median	UQ	95 <sup>th</sup> Centile	Max
1999	74	134.2	139	144	148.7	154.4	163.4	167.3
2000	106	130.6	137.1	142.5	147.5	153.1	162.8	167.7
2001	126	127.5	135.6	143.3	149.1	154.9	161.8	180.5
2002	147	126.7	136.7	144.5	149.2	154.5	162	169.7
2003	176	126.7	136.3	144.7	150.7	155.7	161.3	173.7
2004	209	120	137.7	145.2	149.8	155.4	162.5	168.3
2005	237	119.6	136.7	143.7	150.3	155.2	161	172.9
2006	291	125.3	138	146.4	151.2	156.3	162.7	180.1
2007	313	132.2	140.1	147.5	151.5	156.7	164.5	173.7
2008	356	129.3	140.7	147.5	152.3	157	164.3	169.6

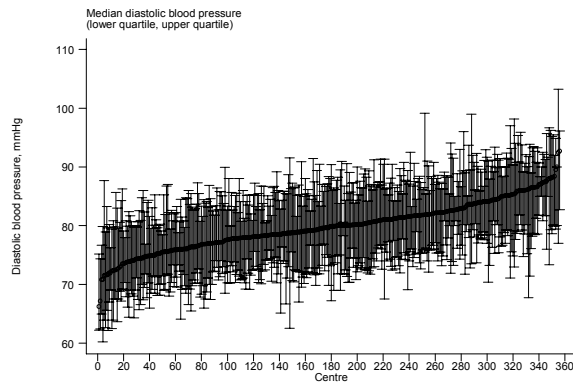
**Figure 9.1.5 (a): Variation in median systolic blood pressure among HD patients, HD centers 2008**



**Table 9.1.5 (b): Median diastolic blood pressure among HD patients, HD centers**

Year	No. of centres	Min	5 <sup>th</sup> Centile	LQ	Median	UQ	95 <sup>th</sup> Centile	Max
1999	74	76.9	78.6	82	83.8	85.8	88.8	91.8
2000	106	75.1	76.7	80	82.2	84.7	89.3	92.4
2001	126	73.5	75.9	79.7	81.8	83.7	87.5	91.3
2002	147	72.3	75.8	79.3	81.2	83.6	87.4	92
2003	176	73.4	75.3	78.4	80.8	83.7	86.8	93.3
2004	209	70.3	74	78.2	80.8	82.5	86	89.1
2005	237	67.4	73.5	78.1	80.5	82.8	86.7	89.6
2006	291	67.3	74.5	78.2	80.6	83	87.3	110.2
2007	313	70	73.8	77.7	80.3	82.9	87.1	124.5
2008	356	66.3	73.1	77	79.8	82.3	86.6	92.7

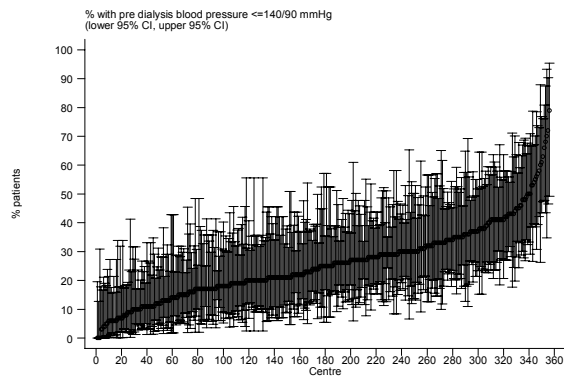
**Figure 9.1.5 (b): Variation in median diastolic blood pressure among HD patients, HD centers 2008**



**Table 9.1.5 (c): Proportion of HD patients with pre dialysis blood pressure < 140/90 mmHg, HD centers**

Year	No. of centres	Min	5 <sup>th</sup> Centile	LQ	Median	UQ	95 <sup>th</sup> Centile	Max
1999	74	3	11	23	31	40	55	67
2000	106	4	13	23	32	44	60	73
2001	126	0	10	20	31.5	43	60	69
2002	147	0	10	21	29	39	57	71
2003	176	5	11	20	28	39	58	80
2004	209	0	9	20	29	38	56	90
2005	237	4	10	21	27	40	59	87
2006	291	0	8	17	25	35	52	71
2007	313	0	7	17	26	33	50	73
2008	356	0	7	17	25	33	50	79

**Figure 9.1.5 (c): Variation in proportion of HD patients with pre dialysis blood pressure < 140/90 mmHg, HD centers 2008**

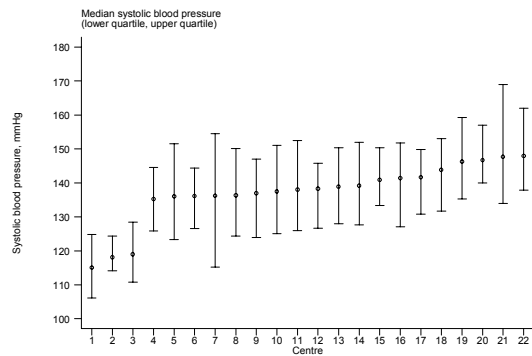


**Table 9.1.6: Variation in BP control among PD centers 2008**

(a) Median systolic blood pressure among PD patients

Year	No. of centres	Min	5 <sup>th</sup> Centile	LQ	Median	UQ	95 <sup>th</sup> Centile	Max
1999	9	117	117	132.5	137.8	140	152.8	152.8
2000	11	116.2	116.2	131.3	134.9	137.7	149.1	149.1
2001	11	119.6	119.6	130.7	137.5	138.8	149	149
2002	15	123.2	123.2	134.5	140	144.5	148.2	148.2
2003	19	123.8	123.8	131.9	142	144.3	151.8	151.8
2004	19	119.7	119.7	131.7	139	144.3	149.7	149.7
2005	20	116.9	119.7	134	136.7	140	152.8	158
2006	22	113.3	117.5	131.3	136.4	140.4	146	154.9
2007	23	114.6	115.1	130.8	137.8	141.8	147.7	153.5
2008	22	115.1	118.1	136.1	138.2	141.6	147.7	147.9

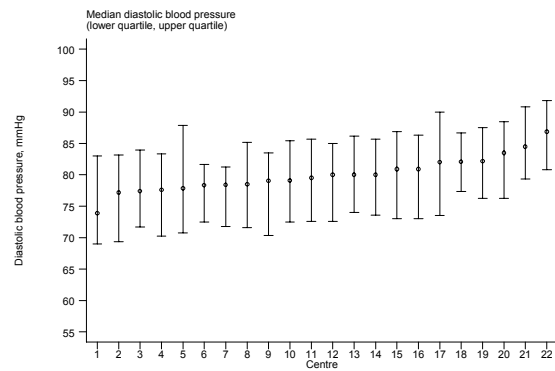
**Figure 9.1.6 (a): Variation in median systolic blood pressure among PD patients, PD centers 2008**



**Table 9.1.6 (b): Median diastolic blood pressure among PD patients, PD centers**

Year	No. of centres	Min	5 <sup>th</sup> Centile	LQ	Median	UQ	95 <sup>th</sup> Centile	Max
1999	9	76.8	76.8	84.1	84.3	85	86.8	86.8
2000	11	73.1	73.1	80	83	84.4	88	88
2001	11	78	78	80.9	83.4	84.8	88	88
2002	15	76.8	76.8	81.8	83.3	85.7	89.5	89.5
2003	19	77.2	77.2	80.8	82.9	84.4	88	88
2004	19	76.7	76.7	80.5	83.2	84.2	87.5	87.5
2005	20	74.8	75.1	80.3	82.6	84	85.9	86
2006	22	71.5	73.5	80	81.4	82.3	86.5	88.4
2007	23	69.5	72.5	79.1	80.2	82.3	83.2	87
2008	22	73.9	77.2	78.3	79.8	82	84.5	86.8

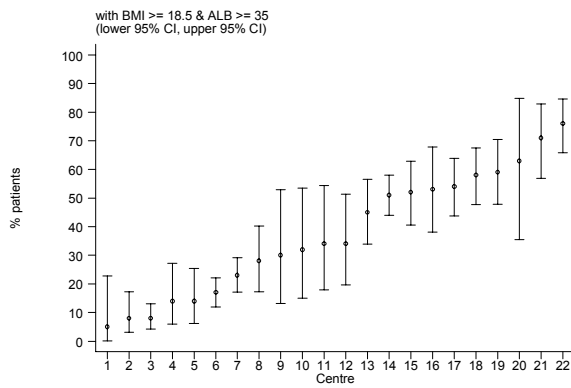
**Figure 9.1.6 (b): Variation in median diastolic blood pressure among PD patients, PD centers 2008**



**Table 9.1.6 (c): Proportion of PD patients with pre dialysis blood pressure < 140/90 mmHg, PD centers**

Year	No. of centres	Min	5 <sup>th</sup> Centile	LQ	Median	UQ	95 <sup>th</sup> Centile	Max
1999	9	30	30	42	52	60	100	100
2000	11	24	24	52	58	63	95	95
2001	11	36	36	48	52	63	87	87
2002	15	19	19	33	47	56	91	91
2003	19	28	28	38	48	66	90	90
2004	19	29	29	38	49	60	80	80
2005	20	23	26	45.5	55	61	96.5	100
2006	22	18	36	43	58.5	69	100	100
2007	23	27	29	44	53	67	91	92
2008	22	28	29	43	51.5	58	88	96

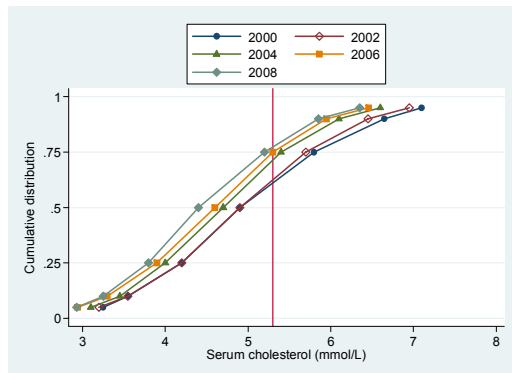
**Figure 9.1.6 (c): Variation in proportion of PD patients with pre dialysis blood pressure ≤140/90 mmHg, PD centers 2008**



**Table 9.2.1: Distribution of serum cholesterol, HD patients 1999-2008**

Year	No. of subjects	Mean	SD	Median	LQ	UQ	% patients <3.5 mmol/L	% patients 3.5-5.3 mmol/L	% patients 5.3-6.2 mmol/L	% patients ≥6.2 Mmol/L
1999	1871	5	1.3	4.9	4.1	5.7	10	54	20	15
2000	2956	5	1.2	4.9	4.2	5.8	8	53	23	16
2001	3898	5.1	1.3	4.9	4.2	5.8	8	52	24	16
2002	4751	5	1.2	4.9	4.2	5.7	9	55	24	13
2003	5806	4.8	1.1	4.8	4.1	5.5	9	59	21	11
2004	6710	4.7	1.1	4.7	4	5.4	11	60	21	8
2005	7906	4.7	1.1	4.6	4	5.3	12	61	19	8
2006	10139	4.6	1.1	4.6	3.9	5.3	14	62	17	7
2007	11347	4.6	1.1	4.5	3.8	5.2	14	63	17	6
2008	13705	4.5	1.1	4.4	3.8	5.2	15	64	16	6

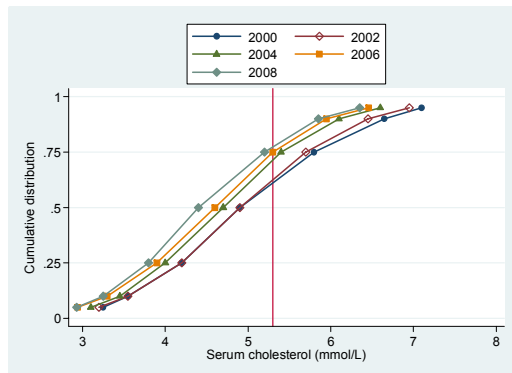
**Figure 9.2.1: Cumulative distribution of cholesterol, HD patients 1999-2008**



**Table 9.2.2: Distribution of serum cholesterol, PD patients 1999-2008**

Year	No. of subjects	Mean	SD	Median	LQ	UQ	% patients <3.5 mmol/L	% patients 3.5-<5.3 mmol/L	% patients 5.3-<6.2 mmol/L	% patients ≥6.2 Mmol/L
1999	434	5.7	1.4	5.6	4.9	6.4	3	37	30	31
2000	526	5.9	1.6	5.7	4.9	6.7	3	31	30	36
2001	581	5.8	1.4	5.7	4.8	6.6	2	36	27	35
2002	766	5.6	1.4	5.5	4.6	6.4	4	38	28	29
2003	1104	5.4	1.4	5.3	4.4	6.1	5	45	27	23
2004	1230	5.3	1.4	5.2	4.4	6.1	5	48	26	21
2005	1242	5.2	1.3	5	4.3	5.9	5	55	22	18
2006	1395	5.2	1.4	5.1	4.3	5.9	6	51	25	18
2007	1629	5.1	1.3	5.1	4.2	5.9	8	50	24	18
2008	1902	5.2	1.4	5	4.3	5.9	7	51	23	18

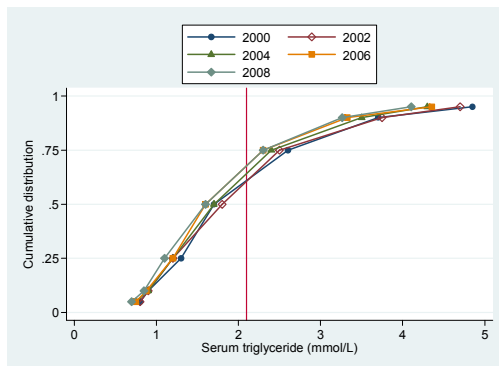
**Figure 9.2.2: Cumulative distribution of cholesterol (mmol/L), PD patients 1999-2008**



**Table 9.2.3: Distribution of serum triglyceride, HD patients 1999-2008**

Year	No. of subjects	Mean	SD	Median	LQ	UQ	% patients <1.7 mmol/L	% patients 1.7-<2.3 mmol/L	% patients 2.3-<3.5 mmol/L	% patients ≥3.5 mmol/L
1999	1633	2.1	1.3	1.7	1.2	2.5	49	21	18	11
2000	2393	2.1	1.4	1.7	1.3	2.6	48	22	19	12
2001	3162	2.1	1.4	1.7	1.2	2.5	48	22	17	13
2002	3861	2.1	1.4	1.8	1.2	2.5	47	22	18	12
2003	4710	2	1.3	1.7	1.2	2.5	48	23	18	11
2004	5607	2	1.2	1.7	1.2	2.4	51	23	17	10
2005	6950	2	1.3	1.7	1.2	2.4	50	22	18	10
2006	9522	2	1.3	1.6	1.2	2.3	54	21	16	9
2007	10882	1.9	1.2	1.6	1.1	2.3	55	21	16	8
2008	12815	1.9	1.2	1.6	1.1	2.3	56	20	15	8

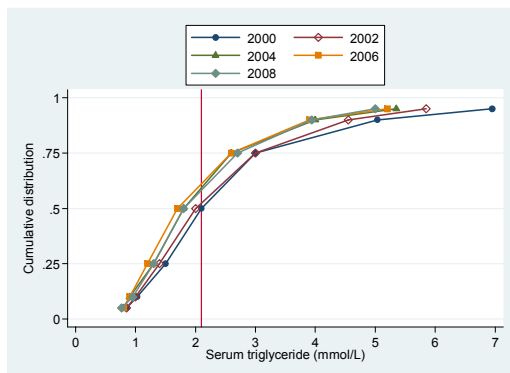
**Figure 9.2.3: Cumulative distribution of serum triglyceride, HD patients 1999-2008**



**Table 9.2.4: Distribution of serum triglyceride, PD patients 1999-2008**

Year	No. of subjects	Mean	SD	Median	LQ	UQ	% patients <1.7 mmol/L	% patients 1.7-<2.3 mmol/L	% patients 2.3-<3.5 mmol/L	% patients $\geq$ 3.5 mmol/L
1999	421	2.4	1.6	2	1.4	3	38	25	18	19
2000	520	2.7	2.2	2.1	1.5	3	33	24	23	21
2001	576	2.6	1.8	2	1.4	3	36	22	22	20
2002	767	2.5	1.7	2	1.4	3	39	21	22	18
2003	1100	2.3	1.6	1.8	1.2	2.8	45	20	21	14
2004	1223	2.2	1.6	1.8	1.3	2.6	47	23	17	13
2005	1241	2.2	1.5	1.8	1.3	2.7	43	24	18	14
2006	1391	2.2	1.6	1.7	1.2	2.6	47	21	18	13
2007	1625	2.1	1.4	1.8	1.3	2.6	45	24	19	12
2008	1907	2.2	1.5	1.8	1.3	2.7	45	21	20	14

**Figure 9.2.4: Cumulative distribution of serum triglyceride, PD patients 1999-2008**

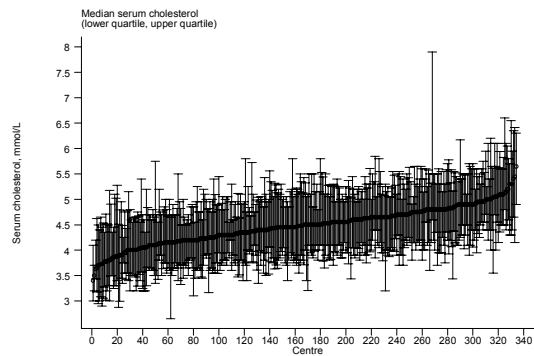


**Table 9.2.5: Variation in dyslipidaemia among HD centers 2008**

(a) Median systolic blood pressure among PD patients

Year	No. of centres	Min	5 <sup>th</sup> Centile	LQ	Median	UQ	95 <sup>th</sup> Centile	Max
1999	9	117	117	132.5	137.8	140	152.8	152.8
2000	11	116.2	116.2	131.3	134.9	137.7	149.1	149.1
2001	11	119.6	119.6	130.7	137.5	138.8	149	149
2002	15	123.2	123.2	134.5	140	144.5	148.2	148.2
2003	19	123.8	123.8	131.9	142	144.3	151.8	151.8
2004	19	119.7	119.7	131.7	139	144.3	149.7	149.7
2005	20	116.9	119.7	134	136.7	140	152.8	158
2006	22	113.3	117.5	131.3	136.4	140.4	146	154.9
2007	23	114.6	115.1	130.8	137.8	141.8	147.7	153.5
2008	22	115.1	118.1	136.1	138.2	141.6	147.7	147.9

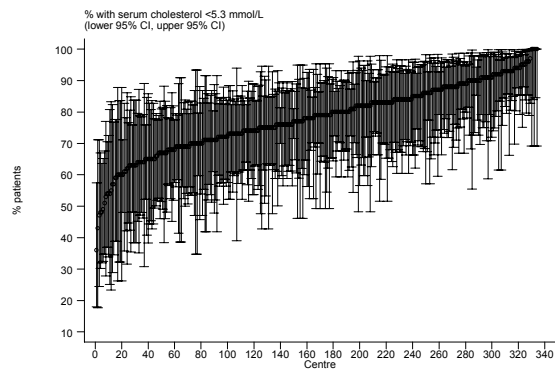
**Figure 9.2.5 (a): Variation in median serum cholesterol level among HD patients, HD centers 2008**



**(b) Proportion of patients with serum cholesterol < 5.3 mmol/L, HD centers 2008**

Year	No. of centres	Min	5 <sup>th</sup> Centile	LQ	Median	UQ	95 <sup>th</sup> Centile	Max
1999	46	37	38	57	64.5	77	86	89
2000	76	35	40	51	61	69	86	94
2001	94	14	36	54	60	67	78	89
2002	122	28	46	58	63.5	71	79	93
2003	150	40	48	60	68	76	83	92
2004	179	38	48	62	70	78	91	94
2005	212	33	53	66	74	81	91	95
2006	264	29	53	69	75	83	92	100
2007	283	33	58	69	77	84	94	100
2008	334	36	60	71	79	86	94	100

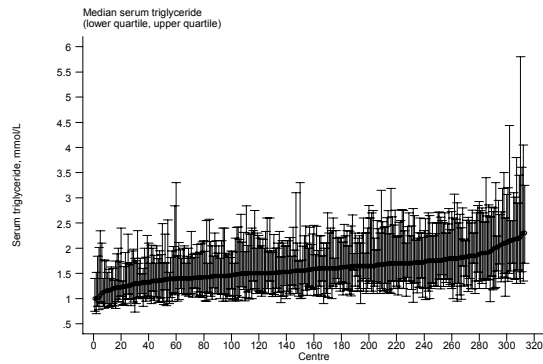
**Figure 9.2.5 (b): Variation in proportion of patients with serum cholesterol < 5.3 mmol/L, HD centers 2008**



**Table 9.2.5(c) Median serum triglyceride level among HD patients**

Year	No. of centres	Min	5 <sup>th</sup> Centile	LQ	Median	UQ	95 <sup>th</sup> Centile	Max
1999	41	1.2	1.3	1.5	1.7	1.9	2.1	2.5
2000	59	1.2	1.4	1.5	1.8	2	2.6	2.8
2001	80	1.1	1.3	1.5	1.7	1.9	2.3	2.5
2002	98	1.1	1.4	1.6	1.8	2	2.3	3.2
2003	129	1.2	1.3	1.5	1.7	1.9	2.2	2.5
2004	155	1	1.3	1.5	1.7	1.9	2.2	2.9
2005	193	0.9	1.3	1.5	1.7	1.9	2.2	2.8
2006	253	0.9	1.2	1.5	1.6	1.8	2.2	4.1
2007	272	0.8	1.2	1.4	1.6	1.8	2.2	3.5
2008	313	1	1.2	1.4	1.6	1.7	2.1	2.3

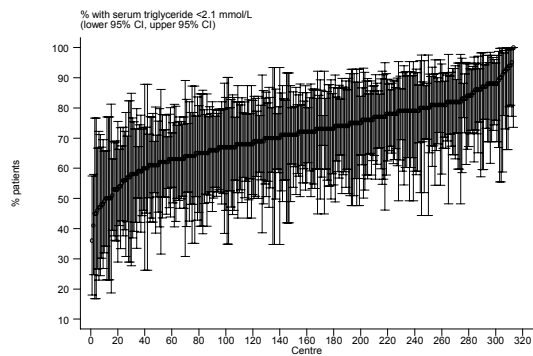
**Figure 9.2.5 (c): Variation in median serum triglyceride level among HD patients, HD centers 2008**



**(d) Proportion of patients with serum triglyceride < 2.1mmol/L, HD centers 2008**

Year	No. of centres	Min	5th Centile	LQ	Median	UQ	95th Centile	Max
1999	41	41	50	61	67	73	87	92
2000	59	23	27	57	66	74	83	86
2001	80	38	44.5	57	65	76	85	90
2002	98	27	44	55	65	73	81	93
2003	129	27	43	58	67	75	90	100
2004	155	15	47	60	68	79	85	94
2005	193	30	44	59	66	73	83	100
2006	253	0	50	64	70	76	90	100
2007	272	36	48	63	70.5	78	88	100
2008	313	36	51	65	72	79	88	100

**Figure 9.2.5 (d): Variation in proportion of patients with serum triglyceride < 2.1mmol/L, HD centers 2008**

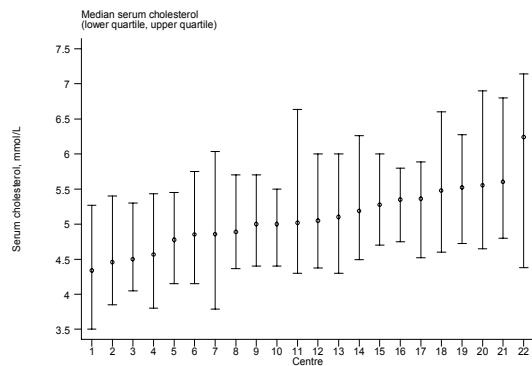


**Table 9.2.6: Variation in dyslipidaemia among PD centers 2008**

(a) Median serum cholesterol level among PD patients

Year	No. of centres	Min	5 <sup>th</sup> Centile	LQ	Median	UQ	95 <sup>th</sup> Centile	Max
1999	8	5.1	5.1	5.4	5.7	5.8	6	6
2000	10	5.2	5.2	5.4	5.6	5.9	6.4	6.4
2001	10	5	5	5.6	5.9	6.1	6.2	6.2
2002	15	4.9	4.9	5.4	5.5	5.7	6.2	6.2
2003	18	4.5	4.5	5	5.3	5.7	6.2	6.2
2004	19	4.6	4.6	4.9	5.3	5.5	6.2	6.2
2005	19	4.4	4.4	4.7	5	5.4	5.9	5.9
2006	21	4.4	4.6	4.8	5.1	5.4	6.1	6.2
2007	23	4.4	4.5	4.8	5.2	5.5	6.1	6.2
2008	22	4.3	4.5	4.8	5	5.4	5.6	6.2

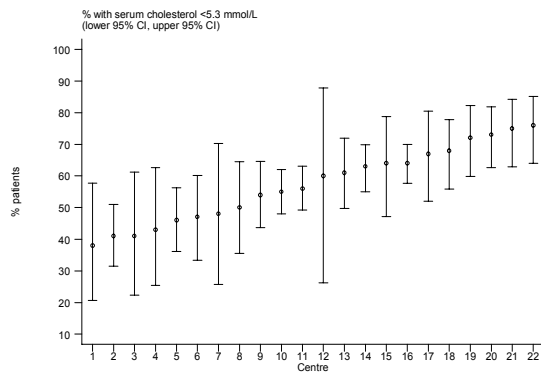
**Figure 9.2.6 (a): Variation in median serum cholesterol level among PD patients, PD centers 2008**



**(b) Proportion of patients with serum cholesterol < 5.3 mmol/L, PD centers 2008**

Year	No. of centres	Min	5 <sup>th</sup> Centile	LQ	Median	UQ	95 <sup>th</sup> Centile	Max
1999	8	10	10	36.5	39.5	45	56	56
2000	10	11	11	18	31	46	54	54
2001	10	22	22	30	34.5	45	63	63
2002	15	19	19	33	42	45	80	80
2003	18	17	17	39	48.5	59	83	83
2004	19	10	10	40	51	60	71	71
2005	19	27	27	49	60	70	77	77
2006	21	19	26	48	59	66	75	80
2007	23	27	30	44	53	67	77	87
2008	22	38	41	47	58	67	75	76

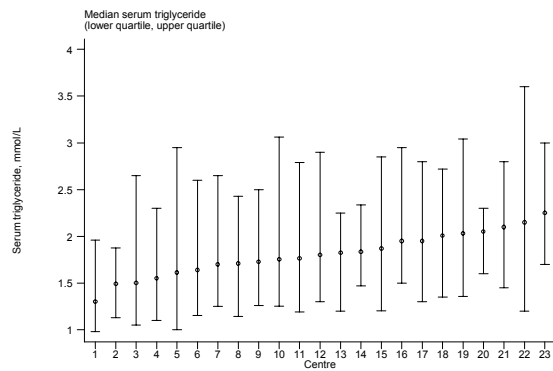
**Figure 9.2.6 (b): Variation in proportion of patients with serum cholesterol < 5.3 mmol/L, PD centers 2008**



**(c) Median serum triglyceride level among PD patients, PD centers 2008**

Year	No. of centres	Min	5 <sup>th</sup> Centile	LQ	Median	UQ	95 <sup>th</sup> Centile	Max
1999	8	1.6	1.6	1.9	2	2.1	2.6	2.6
2000	10	1.8	1.8	2	2.3	2.5	2.6	2.6
2001	10	1.5	1.5	1.9	2	2.1	3	3
2002	15	1.5	1.5	1.8	1.9	2	2.4	2.4
2003	18	1.2	1.2	1.7	1.8	2	2.3	2.3
2004	19	1.3	1.3	1.7	1.8	1.8	2.2	2.2
2005	19	1.3	1.3	1.6	1.9	2	2.2	2.2
2006	21	1.1	1.4	1.6	1.8	1.8	2	2.6
2007	23	1.2	1.5	1.7	1.8	1.9	2.1	2.7
2008	23	1.3	1.5	1.6	1.8	2	2.2	2.3

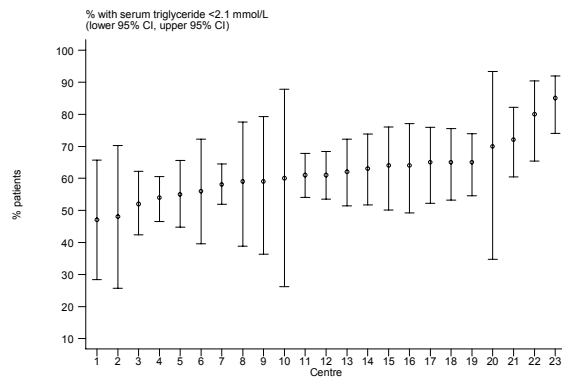
**Figure 9.2.6 (c): Variation in median serum triglyceride level among PD patients, PD centers 2008**



**(d) Proportion of patients with serum triglyceride < 2.1mmol/L, PD centers 2008**

Year	No. of centres	Min	5 <sup>th</sup> Centile	LQ	Median	UQ	95 <sup>th</sup> Centile	Max
1999	8	37	37	53.5	56	60.5	64	64
2000	10	18	18	42	49	54	62	62
2001	10	27	27	50	53	58	68	68
2002	15	38	38	52	56	57	76	76
2003	18	49	49	52	59	62	92	92
2004	19	47	47	60	62	67	89	89
2005	19	36	36	55	59	69	92	92
2006	21	31	52	56	61	63	78	83
2007	23	40	50	59	64	68	80	82
2008	23	47	48	56	61	65	80	85

**Figure 9.2.6 (d): Variation in proportion of patients with serum triglyceride < 2.1mmol/L, PD centers 2008**

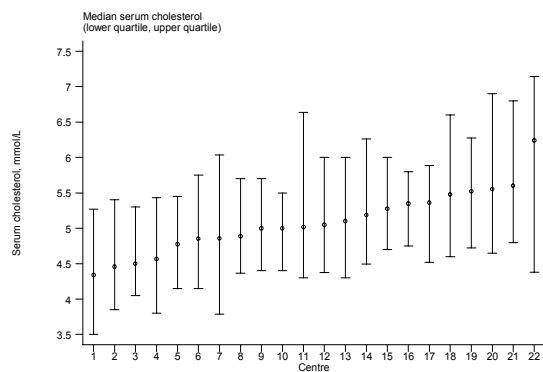


**Table 9.2.6: Variation in dyslipidaemia among PD centers 2008**

(a) Median serum cholesterol level among PD patients

Year	No. of centres	Min	5th Centile	LQ	Median	UQ	95th Centile	Max
1999	8	5.1	5.1	5.4	5.7	5.8	6	6
2000	10	5.2	5.2	5.4	5.6	5.9	6.4	6.4
2001	10	5	5	5.6	5.9	6.1	6.2	6.2
2002	15	4.9	4.9	5.4	5.5	5.7	6.2	6.2
2003	18	4.5	4.5	5	5.3	5.7	6.2	6.2
2004	19	4.6	4.6	4.9	5.3	5.5	6.2	6.2
2005	19	4.4	4.4	4.7	5	5.4	5.9	5.9
2006	21	4.4	4.6	4.8	5.1	5.4	6.1	6.2
2007	23	4.4	4.5	4.8	5.2	5.5	6.1	6.2
2008	22	4.3	4.5	4.8	5	5.4	5.6	6.2

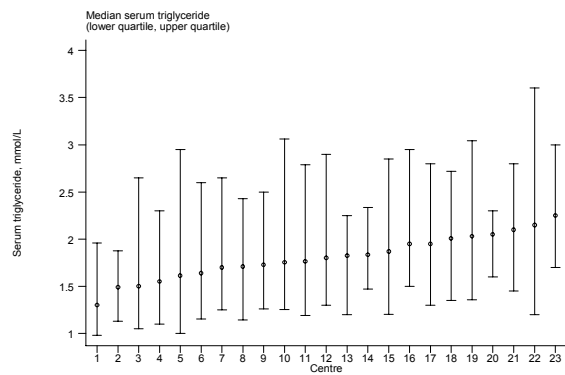
**Figure 9.2.6 (a): Variation in median serum cholesterol level among PD patients, PD centers 2008**



**(c) Median serum triglyceride level among PD patients, PD centers 2008**

Year	No. of centres	Min	5th Centile	LQ	Median	UQ	95th Centile	Max
1999	8	1.6	1.6	1.9	2	2.1	2.6	2.6
2000	10	1.8	1.8	2	2.3	2.5	2.6	2.6
2001	10	1.5	1.5	1.9	2	2.1	3	3
2002	15	1.5	1.5	1.8	1.9	2	2.4	2.4
2003	18	1.2	1.2	1.7	1.8	2	2.3	2.3
2004	19	1.3	1.3	1.7	1.8	1.8	2.2	2.2
2005	19	1.3	1.3	1.6	1.9	2	2.2	2.2
2006	21	1.1	1.4	1.6	1.8	1.8	2	2.6
2007	23	1.2	1.5	1.7	1.8	1.9	2.1	2.7
2008	23	1.3	1.5	1.6	1.8	2	2.2	2.3

**Figure 9.2.6 (c): Variation in median serum triglyceride level among PD patients, PD centers 2008**



**(d) Proportion of patients with serum triglyceride < 2.1mmol/L, PD centers 2008**

Year	No. of centres	Min	5th Centile	LQ	Median	UQ	95th Centile	Max
1999	8	37	37	53.5	56	60.5	64	64
2000	10	18	18	42	49	54	62	62
2001	10	27	27	50	53	58	68	68
2002	15	38	38	52	56	57	76	76
2003	18	49	49	52	59	62	92	92
2004	19	47	47	60	62	67	89	89
2005	19	36	36	55	59	69	92	92
2006	21	31	52	56	61	63	78	83
2007	23	40	50	59	64	68	80	82
2008	23	47	48	56	61	65	80	85

**Figure 9.2.6 (d): Variation in proportion of patients with serum triglyceride < 2.1mmol/L, PD centers 2008**

