

Table 10.1: Distribution of corrected serum Calcium, all dialysis patients 1993-2002

Year	Number of Subjects	Number of Observations	Mean	SD	Median	LQ	UQ	% of patients ≥ 2.2 & ≤ 2.6 mmol/L
1993	782	782	2.3	.3	2.3	2.2	2.5	57
1994	1044	1044	2.3	.3	2.3	2.2	2.5	55
1995	1232	1232	2.4	.3	2.4	2.2	2.5	59
1996	1477	1477	2.4	.3	2.4	2.2	2.6	57
1997	2104	2104	2.4	.3	2.4	2.2	2.5	58
1998	2566	2566	2.3	.3	2.3	2.2	2.5	59
1999	3251	3251	2.4	.3	2.4	2.2	2.5	60
2000	4336	4336	2.4	.3	2.4	2.2	2.5	61
2001	5363	5363	2.4	.3	2.4	2.2	2.5	63
2002	5975	5975	2.3	.3	2.3	2.2	2.5	60

Figure 10.1: Distribution of corrected serum Calcium, all patients

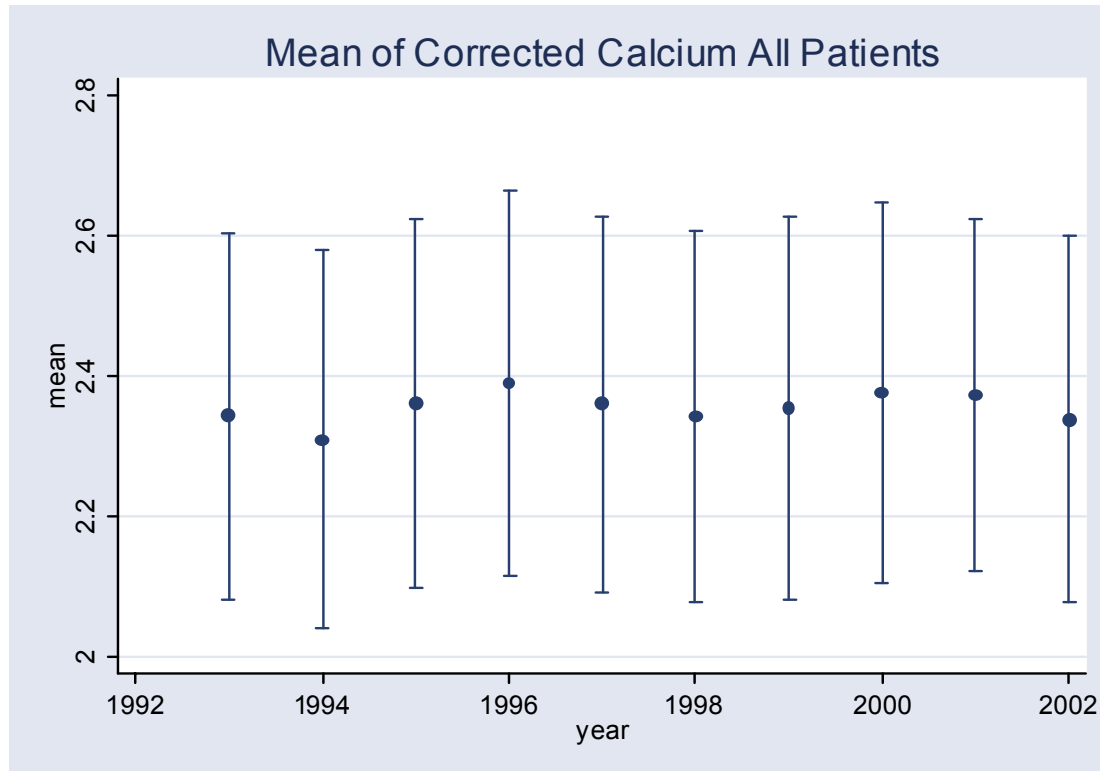


Table 10.2: Distribution of serum Phosphate, all patients 1993-2002

Year	Number of Subjects	Number of Observations	Mean	SD	Median	LQ	UQ	% of patients ≥ 1.6 & < 1.8 mmol/L	% of patients ≥ 1.8 & < 2.2 mmol/L	% of patients ≥ 2.2 & ≤ 2.6 mmol/L
1993	774	774	1.9	.5	1.9	1.5	2.2	16	27	16
1994	1042	1042	1.9	.5	1.8	1.5	2.2	18	29	14
1995	1261	1261	1.8	.5	1.8	1.5	2.2	18	29	15
1996	1532	1532	1.9	.5	1.8	1.5	2.2	16	28	14
1997	2122	2122	1.9	.5	1.8	1.5	2.2	16	26	16
1998	2589	2589	1.9	.5	1.9	1.5	2.2	16	30	16
1999	3446	3446	1.8	.5	1.8	1.5	2.2	15	27	16
2000	4716	4716	1.8	.6	1.8	1.5	2.2	16	28	14
2001	5499	5499	1.8	.5	1.8	1.4	2.1	17	26	15
2002	6155	6155	1.8	.5	1.8	1.5	2.2	16	25	16

Figure 10.2: Distribution of serum Phosphate, all patients

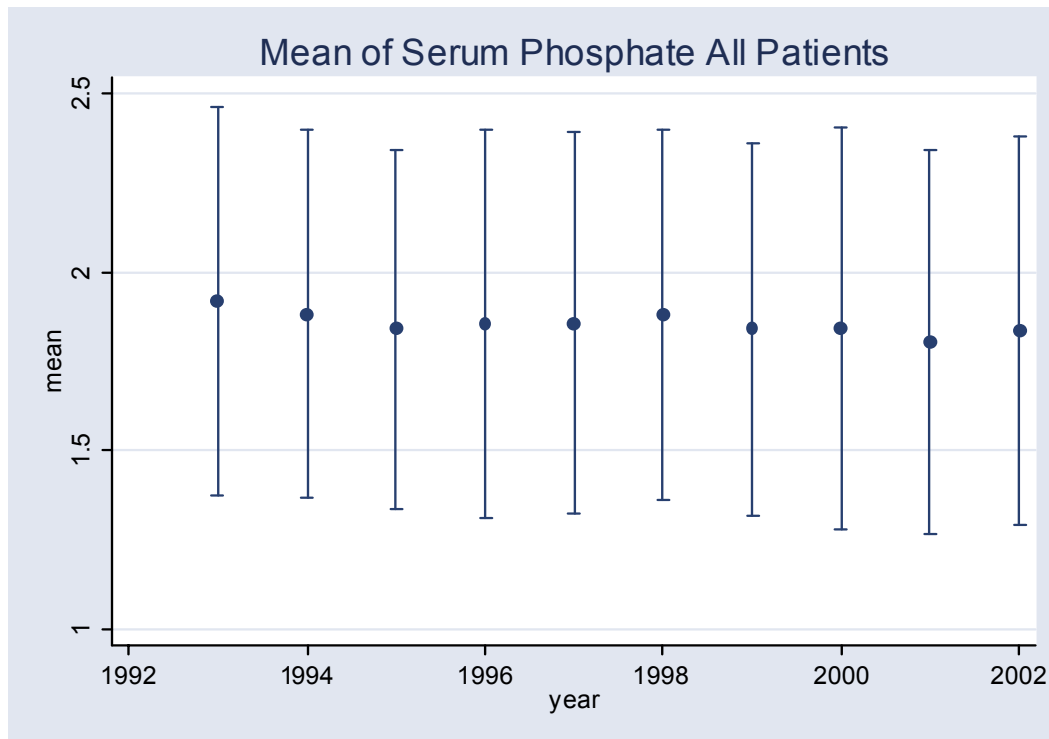


Table 10.3: Distribution of calcium x phosphate product, all patients 1993-2002

Year	Number of Subjects	Number of Observations	Mean	S D	Median	LQ	UQ	% of patients <3.5 mmol ² /L ²	% of patients ≥3.5&<4 mmol ² /L ²	% of patients ≥4&<4.5 mmol ² /L ²	% of patients ≥4.5&<5 mmol ² /L ²	% of patients ≥5&<5.5 mmol ² /L ²	% of patients ≥5.5 mmol ² /L ²
1993	766	766	4.5	1.3	4.4	3.6	5.3	23	15	16	16	10	20
1994	1033	1033	4.3	1.2	4.2	3.5	5	24	18	17	14	11	15
1995	1225	1225	4.3	1.2	4.2	3.5	5	26	16	16	17	11	15
1996	1455	1455	4.4	1.3	4.4	3.5	5.1	24	15	15	16	12	17
1997	2085	2085	4.4	1.3	4.2	3.4	5.1	27	15	15	15	11	17
1998	2524	2524	4.4	1.2	4.3	3.5	5.1	25	15	18	14	12	17
1999	3204	3204	4.3	1.3	4.2	3.4	5.1	29	15	15	14	11	17
2000	4269	4269	4.3	1.3	4.2	3.4	5.1	28	15	16	14	10	17
2001	5279	5279	4.3	1.3	4.1	3.3	5.1	30	16	15	13	10	16
2002	5894	5894	4.3	1.3	4.2	3.3	5.1	30	16	15	13	10	17

Figure 10.3: Distribution of calcium x phosphate product, all patients

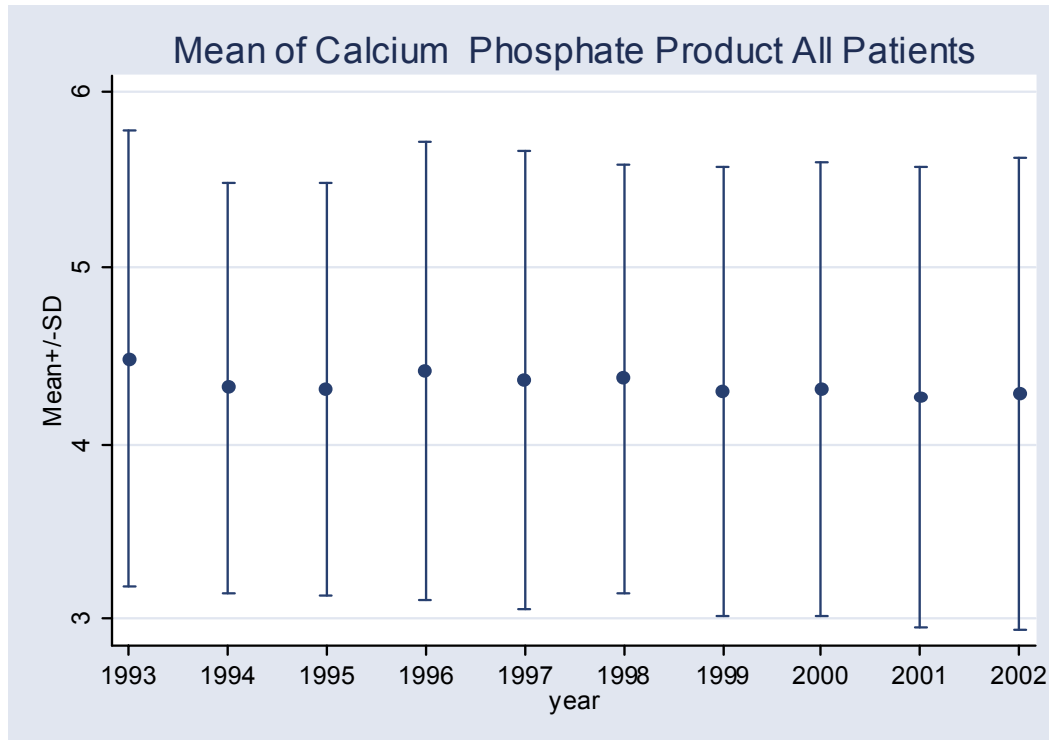


Table 10.4: Distribution of serum iPTH, all patients 1993-2002

Year	Number of Subjects	Number of Observations	Mean	SD	Median	LQ	UQ	% of patients <100 ng/L	% of patients ≥ 100 & <250 ng/L	% of patients ≥ 250 ng/L
1993	0	0								
1994	17	17	420.5	391	253	65	771.5	29	18	53
1995	266	266	307.6	385.2	169.5	50	408	40	19	41
1996	454	454	224.9	315.3	84	30	282	53	19	28
1997	1382	1382	177.7	262.7	71	25	208	58	20	22
1998	1219	1219	118.6	186.4	45	15.5	133	69	17	14
1999	1900	1900	175.4	247.5	75.3	23	229.5	57	21	23
2000	2653	2653	143.1	225	55	17	166	65	18	17
2001	3293	3293	135.8	210.8	56	17	160	64	20	16
2002	3868	3868	162.8	244.4	69	20.5	195	59	21	20

Figure 10.4: Distribution of serum iPTH, all patients

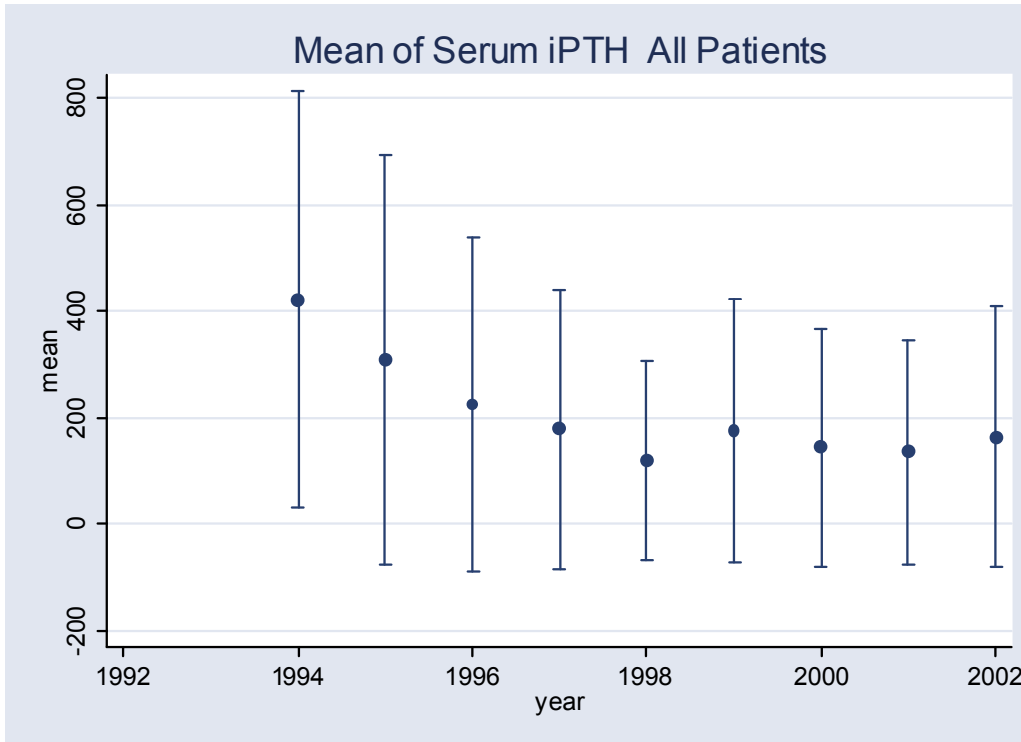


Table 10.5: Adjusted patient survival by serum Calcium, all dialysis patients 1997-2003
 (Adjusted for age, gender, diagnosis, time on RRT and modality)

	N	Hazard Ratio	95% CI	P-value
<2.2	1693	1.56	(1.38,1.78)	0.000
≥2.2-<2.6*	5059	1		
≥2.6	273	1.76	(1.39,2.22)	0.000

* Reference Group

Figure 10.5: Adjusted patient survival in relation to serum Calcium, all patients 1997-2002 (Adjusted for age, gender, diagnosis, time on RRT and modality)

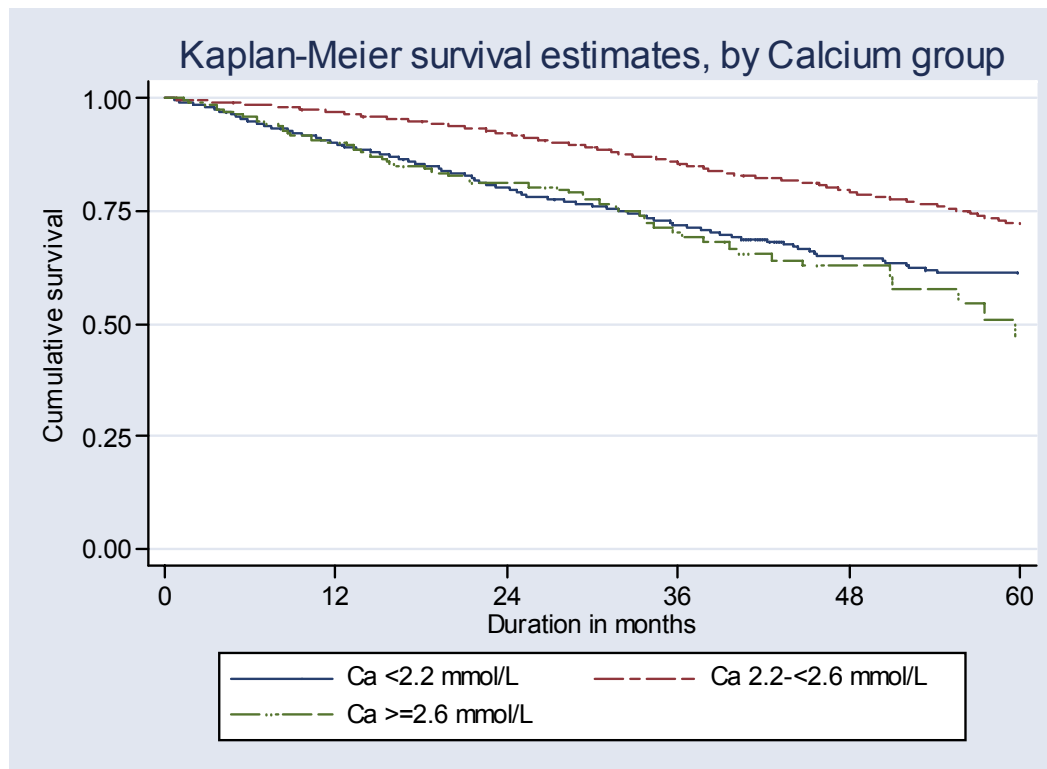


Table 10.6: Adjusted patient survival by serum Phosphate all dialysis patients 1997-2003
(Adjusted for age, gender, diagnosis, time on RRT and modality)

Serum phosphate (mmol/L)	N	Hazard Ratio	95% CI	P-value
<1.6	2385	1.43	(1.24,1.65)	0.000
1.6 -<1.8*	1721	1		
1.8 -<2.0	524	0.89	(0.70,1.14)	0.356
2.0-<2.2	857	0.94	(0.77,1.16)	0.577
2.2-<2.4	627	0.93	(0.73,1.17)	0.526
2.4-<2.6	493	1.20	(,0.94,1.52)	0.139
≥2.6	366	1.81	(1.41,2.33)	0.000

* Reference Group

Figure 10.6: Adjusted patient survival in relation to serum Phosphate, all dialysis patients 1997-2002 (Adjusted for age, gender, diagnosis, time on RRT and modality)

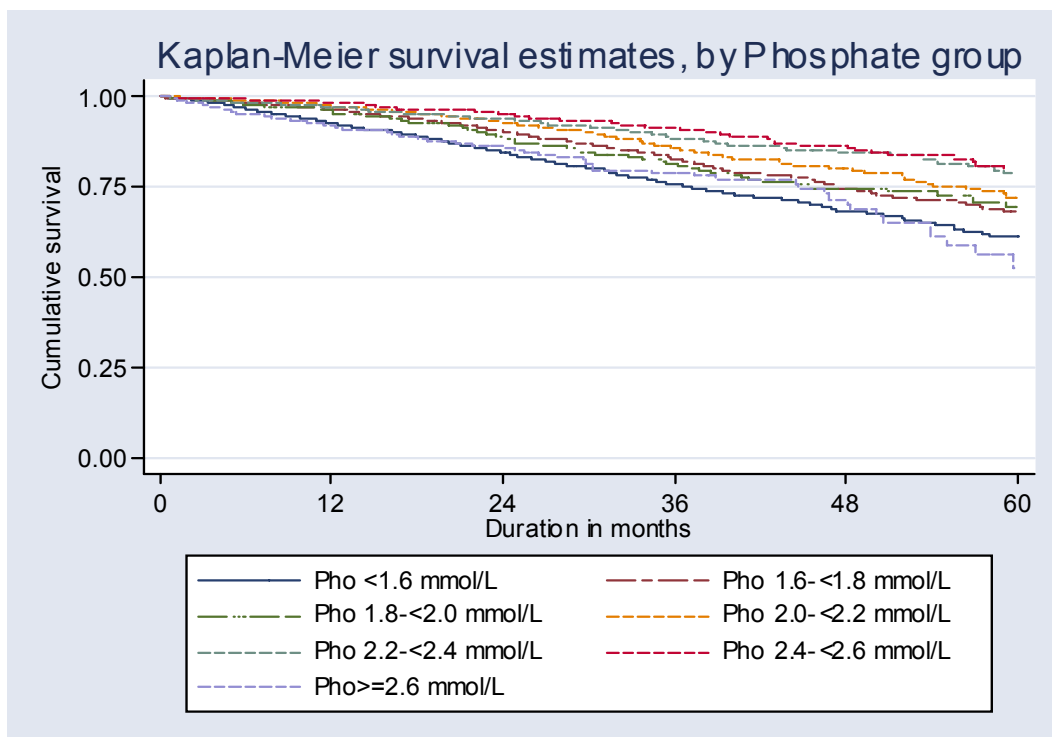


Table 10.7: Adjusted patient survival by calcium x phosphate product, all dialysis patients 1997-2003 (Adjusted for age, gender, diagnosis, time on RRT and modality)

Calcium phosphate product	N	Hazard Ratio	95% CI	P-value
<3.5	2008	1.41	(1.23,1.61)	0.000
3.5-<4.5*	2358	1		
4.5-<5.5	1488	0.84	(0.71,0.98)	0.032
≥5.5	855	1.23	(1.03,1.48)	0.023

* Reference Group

Figure 10.7: Adjusted patient survival in relation to calcium x phosphate product, all dialysis patients 1997-2002(Adjusted for age, gender, diagnosis, time on RRT and modality)

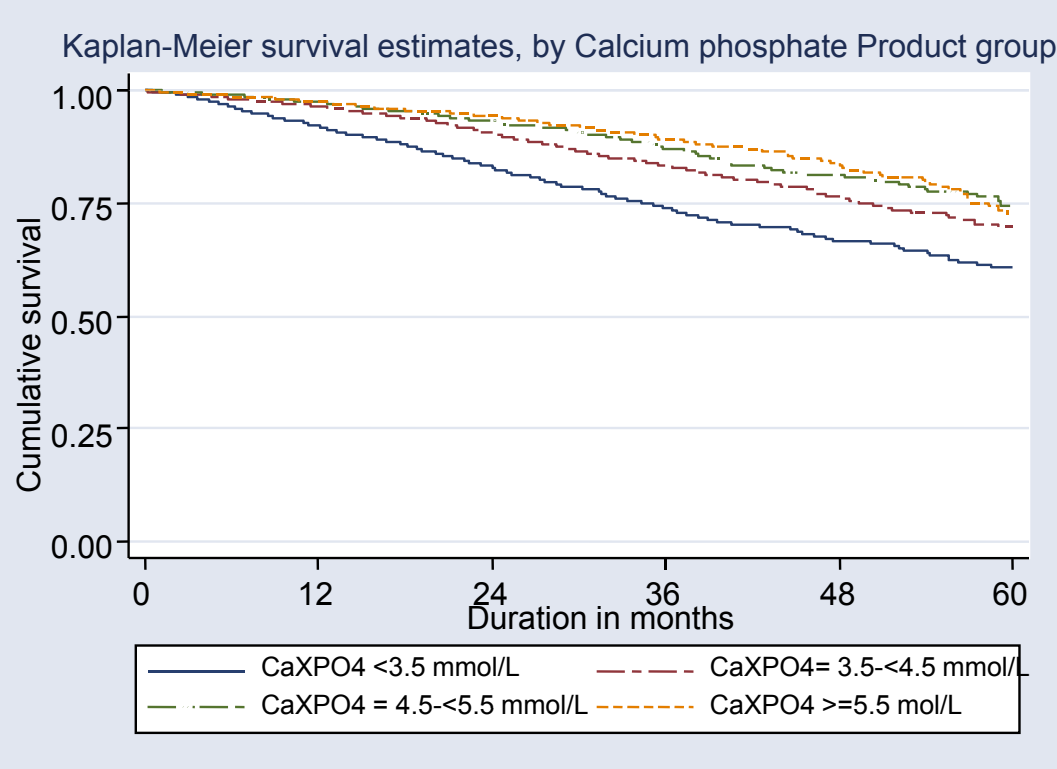


Table 10.8: Adjusted patient survival by serum iPTH , all patients 1997-2003
(Adjusted for age, gender, diagnosis, time on RRT and modality)

	N	Hazard Ratio	95% CI	P-value
<100	5582	1.59	(1.32,1.92)	0.000
≥ 100 -<250*	878	1		
≥ 250	518	1.19	(0.89,1.59)	0.244

* reference group

Figure 10.8: Adjusted patient survival in relation to serum iPTH , all patients 1997-2002
(Adjusted for age, gender, diagnosis, time on RRT and modality)

