



Figure 14.1: Prevalent cases of RRT by modality in children under 20 years old

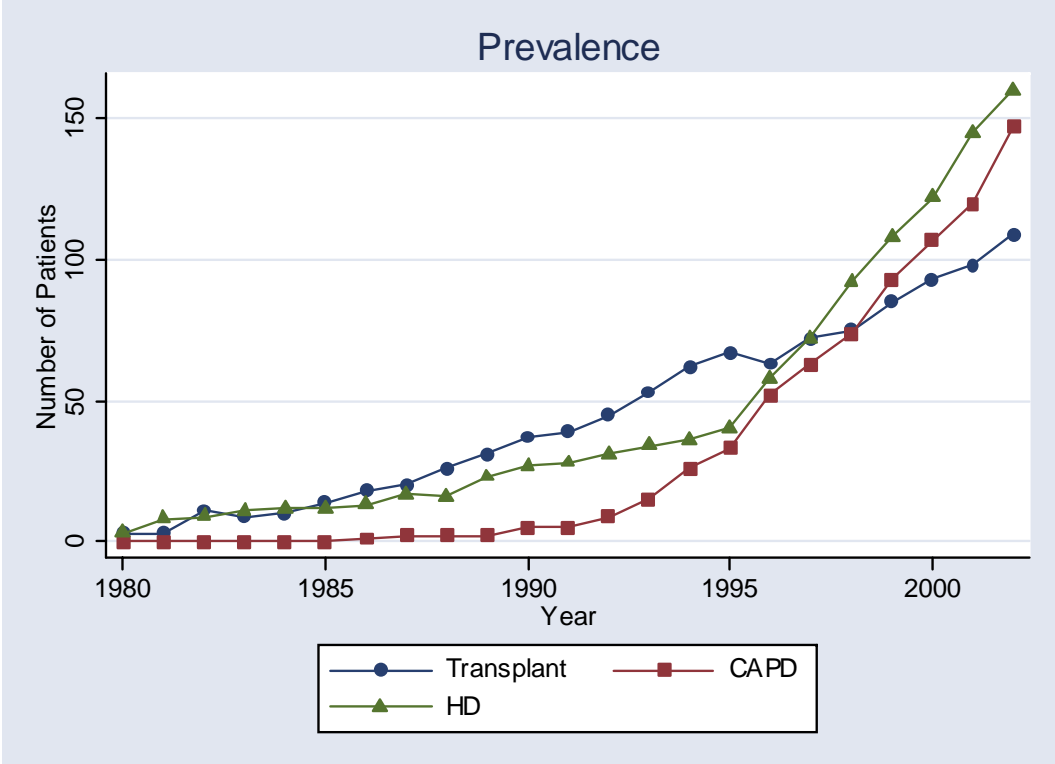




Figure 14.2: Incidence and prevalence rate per million age related population < 20 years old on RRT

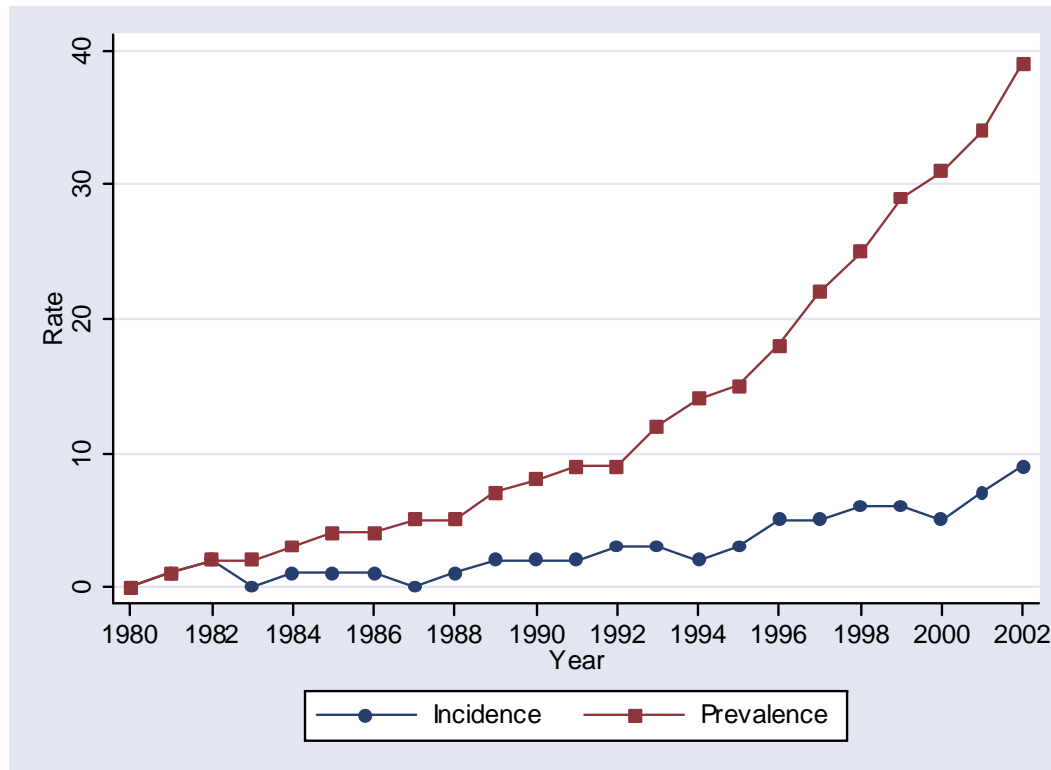


Table 14.3: Age definition, incidence and prevalence of paediatric RRT compared to other registries per million age related population (pmarp)

Registry	Age definition	Year of report	Incidence (pmarp)	Prevalence (pmarp)
Malaysia	< 20 years	2002	8.0	39.0
ERA-EDTA[2]	< 20 years	2000	10.0	62.1
UK Renal Registry[1]	< 15 years	2001	7.4	47.5
USRDS [6 ]	< 20 years	1995	13.0	58.0
Japanese Registry [5]	< 20 years	1998	4.0	22.0

Table 14.4: Geographical Distribution of paediatric (<20 years) RRT 2002

State	Prevalent Cases (n)	Percentage (%)
Selangor	76	18
Johor	50	12
Federal Territory	48	12
Sarawak	42	10
Kedah	35	8
Perak	27	7
Penang	25	6
Negeri Sembilan	24	6
Pahang	20	5
Sabah	19	5
Terengganu	18	4
Kelantan	11	3
Melaka	11	3
Perlis	8	2
Total	414	101

Table 14.5: Gender distribution of New Dialysis and Transplant Patients 1980-2002

Year	New Dialysis		New Transplant	
	N=296	N=206	N=104	N=59
	% Male	% Female	% Male	% Female
1980 – 1984	65	35	69	31
1985 – 1989	65	35	66	34
1990 – 1994	54	46	63	37
1995 - 1999	60	40	61	39
2000 - 2002	58	42	64	36

Figure 14.5: Number of New dialysis and Transplant patients by gender 1980 - 2002

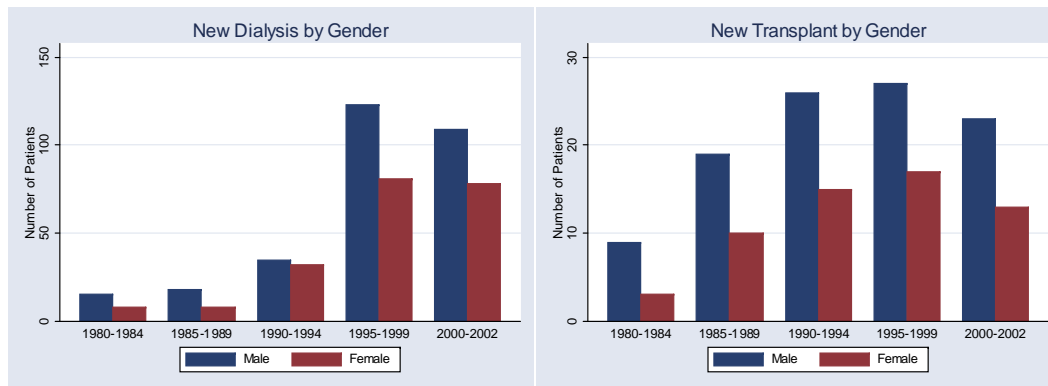




Table 14.6: Dialysis acceptance and New Transplant rate per million age group population 1990-2002

Year	New Dialysis				New Transplant			
	Age groups (years)				Age groups (years)			
	0 – 4	5 – 9	10-14	15-19	0 – 4	5 – 9	10-14	15-19
1990	0	0	1	4	0	0	1	2
1991	0	0	0	3	0	0	2	1
1992	0	1	2	4	0	0	1	2
1993	0	1	2	5	0	0	1	3
1994	1	1	3	2	0	0	1	3
1995	0	1	4	4	0	0	0	3
1996	0	3	9	9	0	0	1	1
1997	1	1	5	12	1	0	2	3
1998	0	3	8	10	0	0	1	1
1999	0	3	9	11	1	0	2	2
2000	0	4	5	11	0	0	4	3
2001	1	2	9	15	0	1	1	2
2002	3	2	10	17	0	0	3	2

Figure 14.6(a): Dialysis Treatment Rate by Age Group 1990-2002

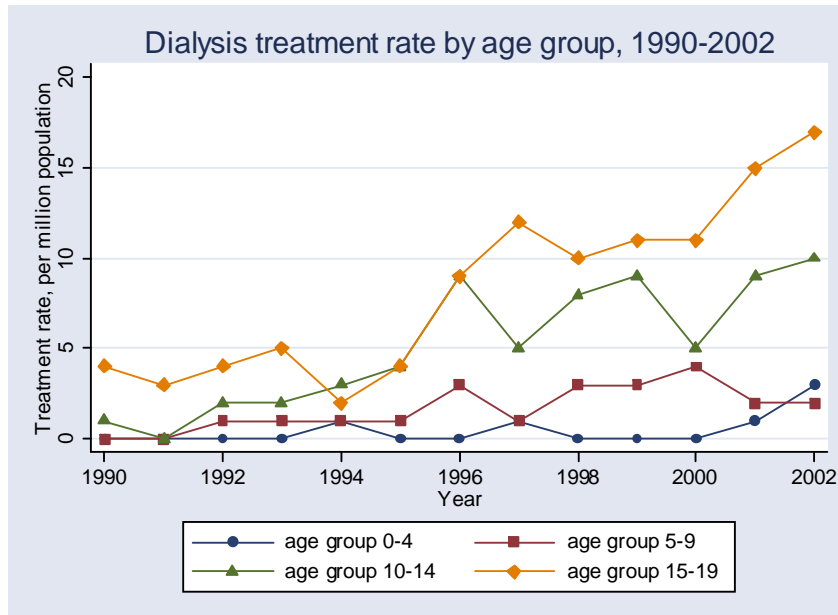


Figure 14.6(b): Transplant Treatment Rate by Age Group 1990-2002

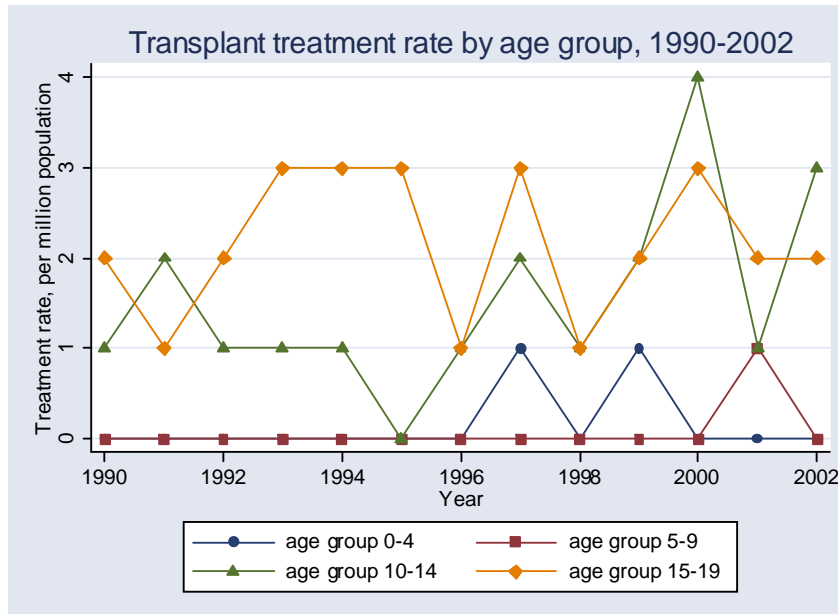


Table 14.7: New Dialysis by treatment modality 1990 - 2002

Year	N	% HD	% CAPD	Year	N	% HD	% CAPD
1990	11	82	18	1997	41	51	49
1991	7	71	29	1998	49	43	57
1992	14	64	36	1999	53	43	57
1993	16	63	38	2000	48	29	71
1994	17	24	76	2001	61	39	61
1995	20	35	65	2002	78	35	65
1996	44	48	52				

Figure 14.7: New Dialysis by treatment modality 1990 - 2002

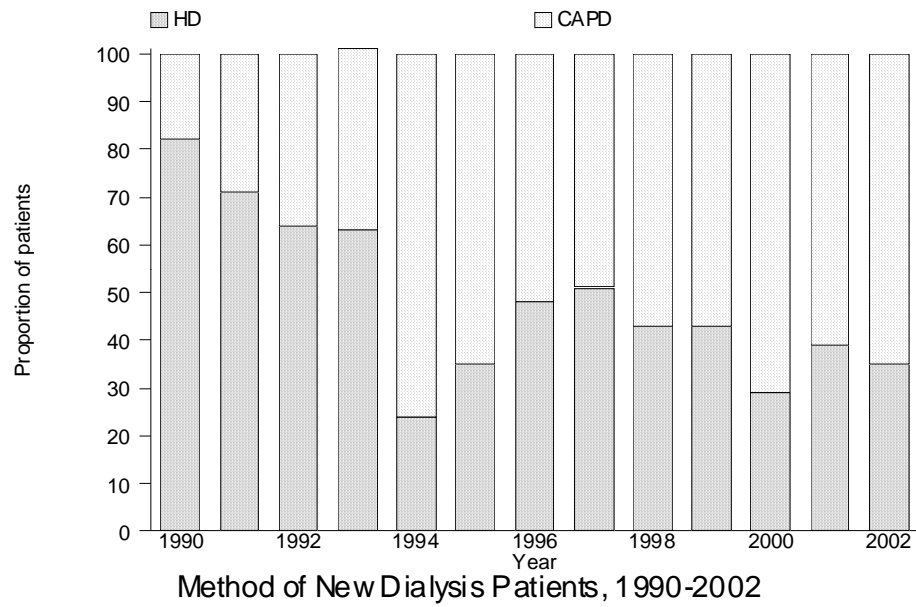
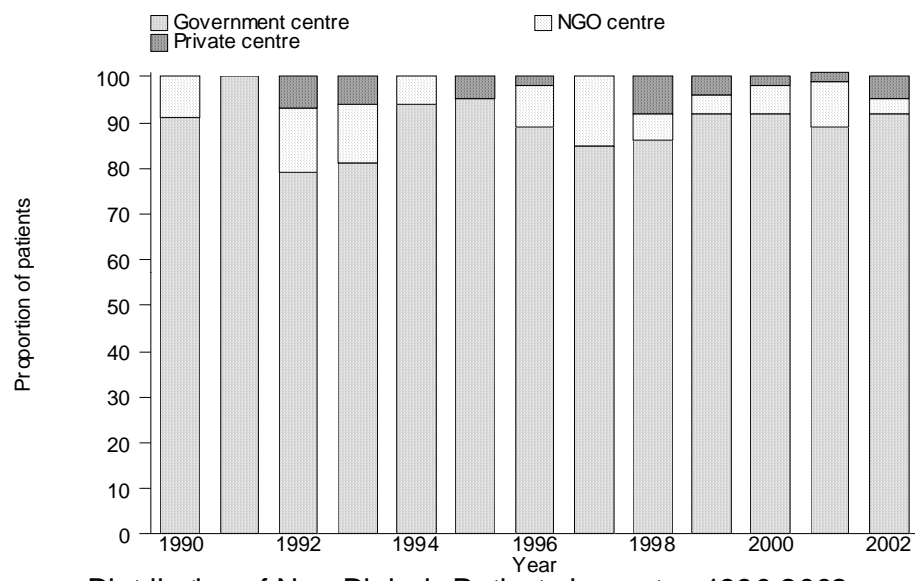


Table 14.8: New Dialysis by Sector 1990 - 2002

Year	N	% Govt	% NGO	% Private	Year	N	% Govt	% NGO	% Private
1990	11	91	9	0	1997	41	85	15	0
1991	7	100	0	0	1998	49	86	6	8
1992	14	79	14	7	1999	53	92	4	4
1993	16	81	13	6	2000	48	92	6	2
1994	17	94	6	0	2001	61	89	10	2
1995	20	95	0	5	2002	78	92	3	5
1996	44	89	9	2					

Figure 14.8: New Dialysis by Sector 1990 – 2002



Distribution of New Dialysis Patients by sector, 1990-2002

Table 14.9: Primary Renal Disease 1990– 2002

Primary Renal Disease	Male		Female		All	
	N	%	N	%	N	%
Glomerulonephritis •(FSGS)	130	60%	111	40%	241	54% (20%)
Reflux nephropathy	34	75%	12	25%	46	7%
Renal dysplasia	13	50%	9	50%	22	5%
Obstructive uropathy	14	75%	5	25%	19	5%
Unknown	63	46%	43	54%	106	26%



Table 14.10: Patient Survival by Modality of RRT, 1980-2002

Modality Interval (years)	Transplant		CAPD		HD	
	% survival	SE	% survival	SE	% survival	SE
1	97	1	95	1	95	1
5	94	2	80	4	87	2
10	91	3	19	16	82	3
15	91	3			58	10

\* SE Standard Error

Figure 14.10: Patient Survival by Modality

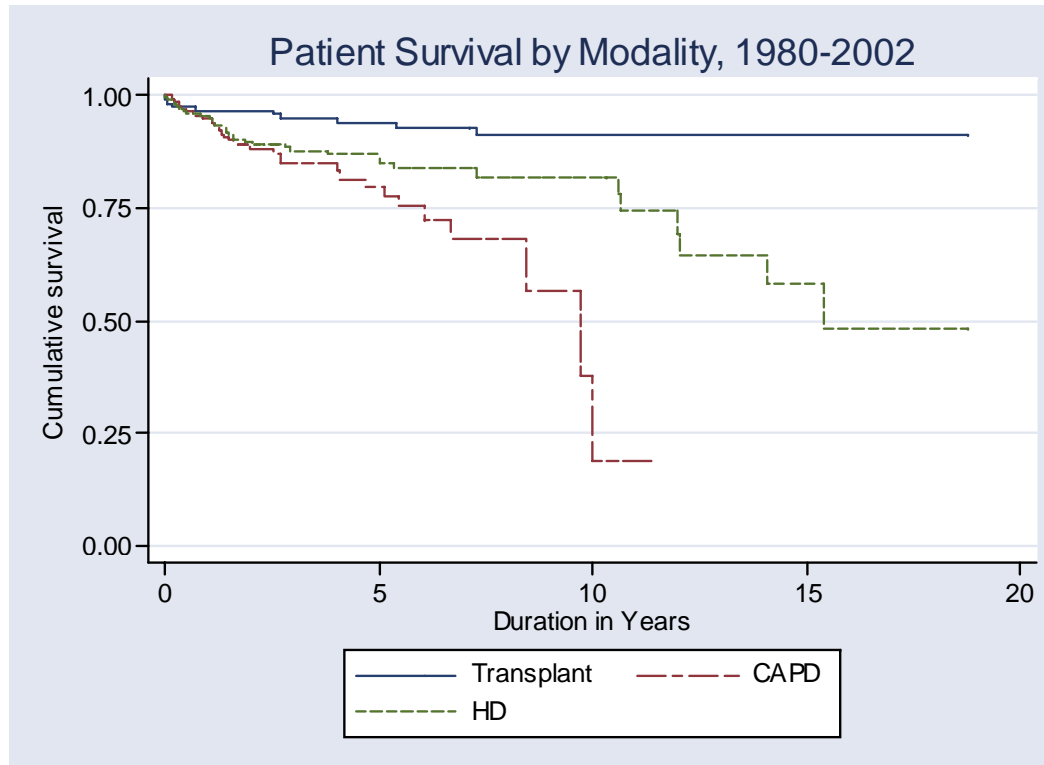


Table 14.11: Dialysis Technique Survival by Modality 1980-2002

Modality Interval (years)	CAPD		HD	
	% survival	SE*	% survival	SE*
1	89	2	93	2
5	54	4	83	3
10	5	4	76	4
15			54	10

\* SE Standard Error

Figure 14.11: Dialysis Technique survival by modality

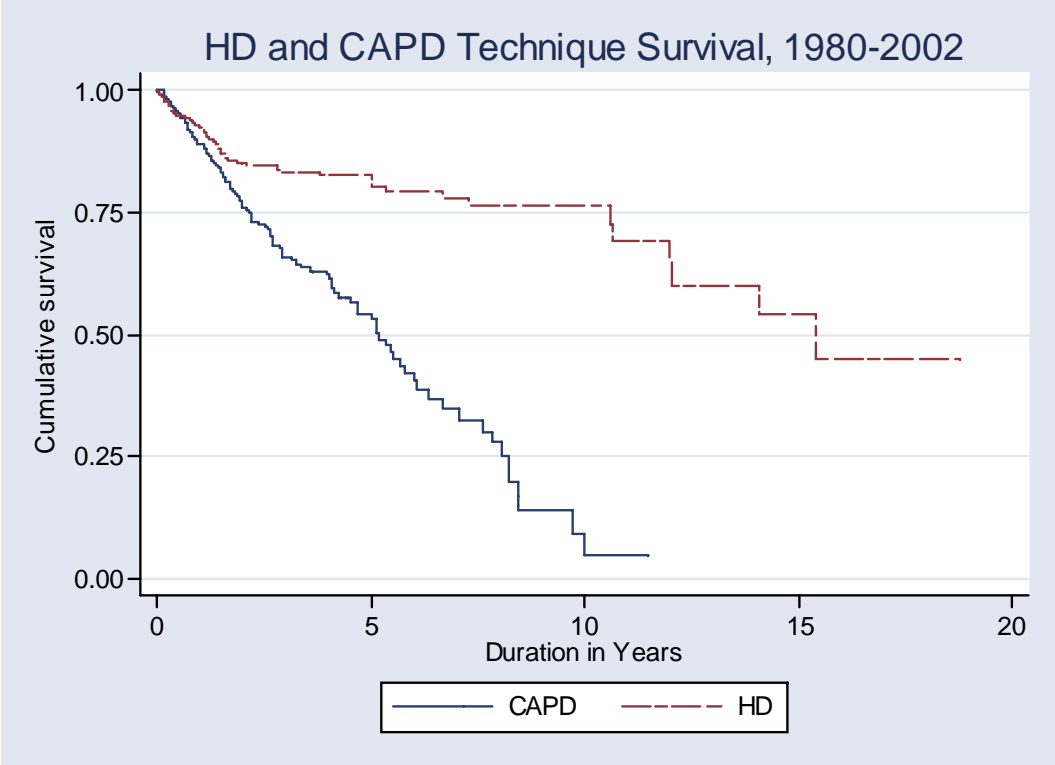


Table 14.12: Types of Transplant 1985-2002

Year	1985-1989		1990-1994		1995-1999		2000-2002	
	No.	%	No.	%	No.	%	No.	%
Commercial cadaver	0	0	1	2	9	20	4	11
Commercial living donor	5	17	9	22	2	5	5	14
Living related donor	23	79	31	76	31	70	14	39
Living emotionally related	0	0	0	0	0	0	0	0
Cadaver	1	3	0	0	2	5	13	36
Total	29	100	41	100	44	100	36	100

Table 14.13: Transplant Allograft survival, 1980-2002

Interval (years)	% survival	SE*
1	88	3
5	75	4
10	59	5
15	49	6

\* SE Standard Error

Figure 14.13: Transplant allograft survival 1980-2002

