

Table 3.1: Unadjusted survival of dialysis patients by country

Interval (years)	Malaysia (1993 cohort) (%)	US (1991 cohort) (%)	Japan (%)	UK (%)	Netherlands (%)
1	92	78			
2	85	61			67
5	68	29	61	59	35
10	47	9			11

Table 3.2: Unadjusted ten-year patient survival by Dialysis modality (1993-2002 cohort)

Dialysis modality	CAPD		HD		ALL DIALYSIS	
Interval (months)	% Survival	SE*	% Survival	SE*	% Survival	SE*
6	94	1	95	0	95	0
12	88	1	90	0	90	0
24	74	1	82	0	81	0
36	61	1	75	0	73	0
48	50	2	69	1	66	0
60	43	2	63	1	60	1
72	38	2	57	1	55	1
84	34	2	53	1	50	1
96	26	3	48	1	45	1
108	20	3	44	1	41	1
120	20	3	41	1	39	1

* SE=standard error

Figure 3.2: Unadjusted ten-year patient survival by Dialysis Modality (1993-2002)

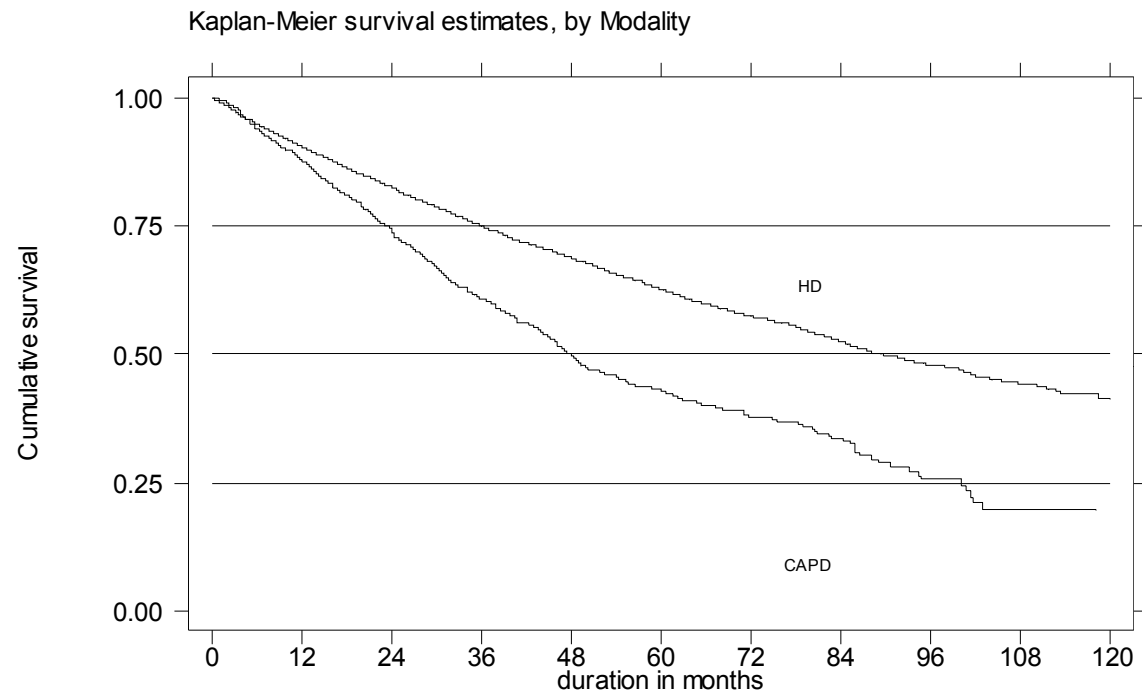


Table 3.3: Unadjusted ten -year survival of haemodialysis and CAPD patients by year of entry (1993-2002 cohort)

Year	1993		1994		1995		1996	
Interval (months)	HD % (SE)	CAPD % (SE)	HD % (SE)	CAPD % (SE)	HD % (SE)	CAPD % (SE)	HD % (SE)	CAPD % (SE)
6	96 (1)	94 (3)	94 (1)	91 (3)	95 (1)	93 (2)	95 (1)	94 (1)
12	93 (1)	85 (5)	89 (2)	82 (4)	92 (1)	87(3)	92 (1)	88 (2)
24	87 (2)	74 (6)	84 (2)	65 (5)	86 (2)	71 (4)	86 (1)	77 (3)
36	81 (2)	58 (7)	77 (2)	50 (5)	79 (2)	59 (4)	76 (2)	66 (4)
48	77 (2)	44 (7)	72 (2)	43 (6)	75 (2)	46 (4)	70 (2)	52 (4)
60	73 (3)	37 (7)	64 (2)	37 (6)	69 (2)	37 (4)	63 (2)	48 (4)
72	68 (3)	37 (7)	60 (2)	33 (6)	64 (2)	33 (4)	57 (2)	39 (4)
84	63 (3)	37 (7)	53 (3)	31 (6)	60 (2)	29 (4)	52 (2)	35 (4)
96	58 (3)	24 (7)	47 (3)	28 (6)	54 (2)	23 (4)		
108	54 (3)	19 (7)	42 (2)	17 (7)				
120	51 (3)	19 (7)						

Year	1997		1998		1999		2000	
Interval (months)	HD % (SE)	CAPD % (SE)	HD % (SE)	CAPD % (SE)	HD % (SE)	CAPD % (SE)	HD % (SE)	CAPD % (SE)
6	94 (1)	96 (1)	95 (1)	94 (2)	95 (1)	94 (2)	95 (1)	94 (2)
12	90 (1)	92 (2)	92(1)	86 (3)	90 (1)	90 (2)	90 (1)	88 (2)
24	83 (1)	79 (3)	84(1)	73 (4)	83 (1)	73 (3)	81 (1)	77 (3)
36	76 (1)	65 (4)	77(1)	62 (4)	75 (1)	55 (4)	74 (1)	64 (4)
48	70 (1)	56 (4)	70(1)	54 (4)	67 (1)	46 (4)		
60	63 (2)	49 (4)	63(1)	44 (5)				
72	57 (2)	42 (4)						

Table 3.3: Unadjusted ten -year survival of haemodialysis and CAPD patients by year of entry (1993-2002 cohort)

Year	2001		2002	
Interval (months)	HD % (SE)	CAPD % (SE)	HD % (SE)	CAPD % (SE)
6	94 (1)	93 (1)	96 (1)	94 (1)
12	89 (1)	88 (2)	91 (2)	87 (2)
24	79 (1)	74 (3)		

* SE=standard error

Table 3.4: Unadjusted ten-year survival of dialysis patients by age (1993-2002 cohort)

Age group	≤14		15-≤24		25- ≤34		35-≤44	
Interval (months)	% Survival	SE*	% Survival	SE*	% Survival	SE*	% survival	SE*
6	98	1	97	1	97	1	97	0
12	97	1	95	1	95	1	94	1
24	92	2	89	1	92	1	90	1
36	88	3	88	1	89	1	85	1
48	88	3	85	2	86	1	82	1
60	85	3	82	2	84	1	78	1
72	80	4	80	2	81	1	74	1
84	75	6	78	3	79	2	71	1
96	75	6	77	3	78	2	65	2
108	56	17	75	3	76	2	61	2
120	56	17	75	3	73	3	60	2

Age group	45- ≤54		55-≤64		≥65	
Interval (months)	% Survival	SE*	% Survival	SE*	% Survival	SE*
6	96	0	93	0	91	1
12	91	1	87	1	84	1
24	83	1	78	1	68	1
36	74	1	66	1	54	1
48	67	1	57	1	44	1
60	60	1	49	1	34	1
72	55	1	41	1	27	2
84	49	1	35	1	21	2
96	41	2	29	2	18	2
108	37	2	24	2	14	2
120	33	3	19	3	14	2

Figure 3.4: Unadjusted ten-year survival of dialysis patients by age (1993-2002 cohort)

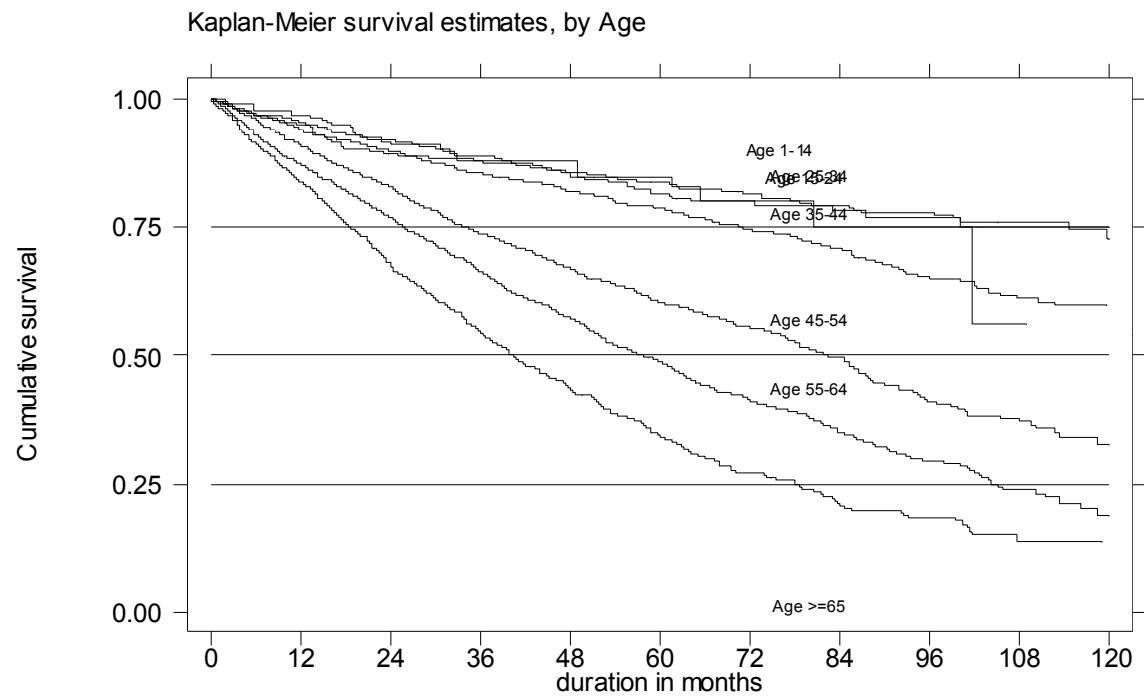


Table 3.5: Unadjusted ten-year survival of dialysis patients by diabetic status (1993-2002)

Diabetes status	Non-Diabetic		Diabetic	
Interval (months)	% Survival	SE*	% Survival	SE*
6	96	0	93	0
12	93	0	86	0
24	87	0	73	1
36	82	0	60	1
48	77	1	50	1
60	71	1	41	1
72	67	1	34	1
84	62	1	29	1
96	58	1	21	1
108	54	1	17	2
120	51	1	14	2

* SE=standard error

Figure 3.5: Unadjusted ten-year survival of dialysis patients by diabetic status (1993-2002 cohort)

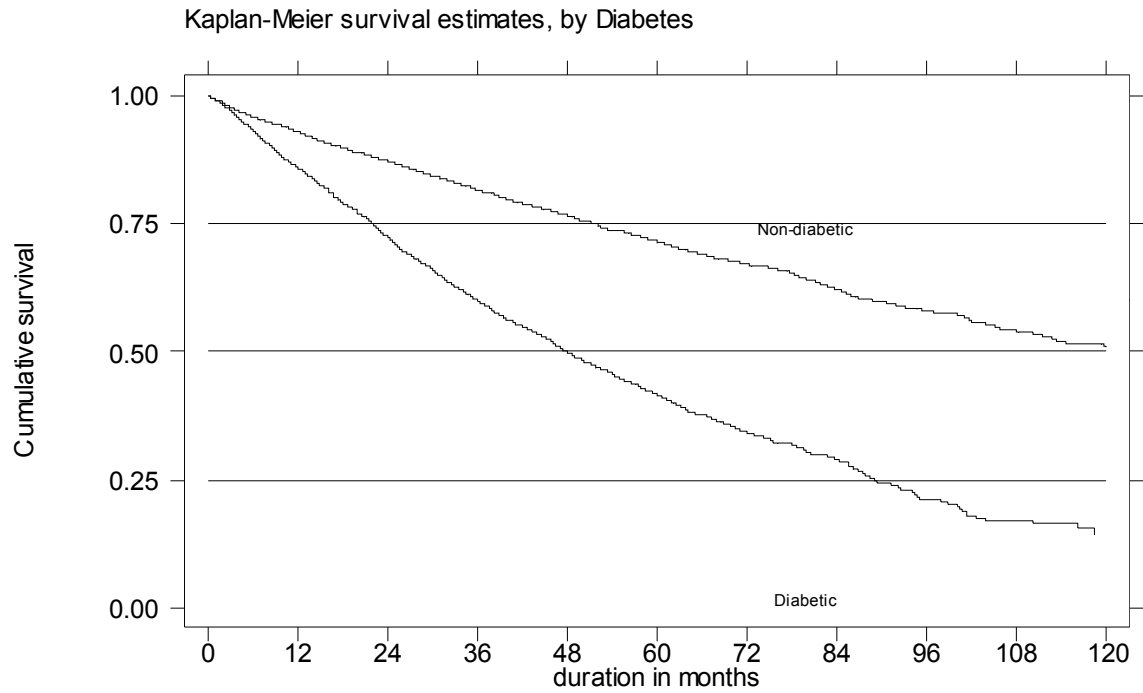


Table 3.6: Adjusted hazard ratio for mortality of dialysis patients (1997-2002 cohort)

Factors	N	Hazard ratio	95% CI	P value
Age (years):				
0-≤14(ref.*)	157	1.00		
15-≤24	417	1.82	(0.89,3.71)	0.100
25-≤34	727	1.58	(0.79,3.16)	0.198
35-≤44	1223	1.97	(1.00,3.89)	0.049
45-≤54	1885	3.12	(1.60,6.09)	0.001
55-≤64	1907	4.03	(2.06,7.89)	0.000
≥65	1094	5.76	(2.92,11.33)	0.000
Gender:				
Male (ref.*)	4113	1.00		
Female	3297	0.86	(0.75, 0.97)	0.015
Primary diagnosis:				
Unknown/Uncertain (ref.*)	2168	1.00		
Diabetes mellitus	2915	2.14	(1.81,2.52)	0.000
GN/ SLE	908	1.04	(0.79,1.35)	0.777
Polycystic kidney	119	1.61	(0.99,2.63)	0.057
Obstructive Nephropathy	361	1.39	(1.05,1.85)	0.023
Others	939	1.23	(0.98,1.53)	0.073
Year start dialysis				
1997-8 (ref.*)	1915	1.00		
1999-2000	2652	1.21	(1.05,1.39)	0.009
2001-2002	2843	1.27	(1.06,1.53)	0.010

Factors	N	Hazard ratio	95% CI	P value
Modality:				
CAPD (ref.*)	1243	1.74	(1.51,2.00)	0.000
HD	6167	1.00		
BMI:				
<18.5	1080	1.41	(1.15,1.74)	0.001
18.5-<25	3635	1.27	(1.10,1.46)	0.001
≥25(ref.*)	1444	1.00		
Serum albumin				
<30	558	4.36	(3.41,5.56)	0.000
30-<35	1255	2.31	(1.91,2.81)	0.000
35-<40	2861	1.39	(1.17,1.64)	0.000
≥40(ref.*)	2170	1.00		
Serum cholesterol (mmol/l):				
<3.2	197	1.45	(1.10,1.92)	0.010
3.2-<5.2	2987	1.00	(0.88,1.13)	0.996
≥5.2(ref.*)	2537	1.00		
KT/V				
<1	274	1.73	(1.23,2.43)	0.002
1.0-1.2	898	1.21	(0.96,1.51)	0.106
1.2-1.4(ref.*)	1439	1.00		
1.4-1.6	1422	0.97	(0.80,1.18)	0.763
≥1.6	1823	0.84	(0.67,1.05)	0.126
Diastolic BP:				
<70	824	1.23	(1.01,1.49)	0.036
70-<80	2193	1.06	(0.92,1.22)	0.450
80-<90(ref.*)	2800	1.00		
90-<100	1186	1.31	(1.09,1.58)	0.004
≥100	270	2.20	(1.63,2.98)	0.000

Hemoglobin(g/dl):				
<8	1610	2.17	(1.78,2.64)	0.000
8-<9	1783	1.31	(1.09,1.60)	0.005
9-<10	1803	1.26	(1.04,1.51)	0.016
10-<11(ref.*)	1112	1.00		
11-<12	504	0.89	(0.68,1.20)	0.453
≥12	234	1.14	(0.79,1.63)	0.487
Serum Calcium (mmol/l):				
<2.2	1683	1.04	(0.88,1.24)	0.636
2.2-<2.6(ref.*)	4423	1.00		
≥2.6	673	1.24	(1.03,1.50)	0.022
Calcium Phosphate product				
<3.5	2130	1.31	(1.08,1.59)	0.006
3.5-<4.5(ref.*)	2335	1.00		
4.5-<5.5	1460	0.84	(0.67,1.05)	0.128
≥5.5	813	0.96	(0.64,1.43)	0.824
Serum Phosphate (mmol/l)				
<1.6	2645	1.01	(0.82,1.25)	0.923
1.6-<2.0(ref.*)	2218	1.00		
2.0-<2.2	788	1.17	(0.91,1.50)	0.213
2.2-<2.4	577	1.07	(0.77,1.49)	0.670
2.4-<2.6	329	1.71	(1.11,2.61)	0.014
≥2.6	414	1.55	(0.98,2.45)	0.061
HbAsg:				
Negative(ref)	6943	1.00		
Positive	467	1.11	(0.87,1.40)	0.407
Anti-HCV:				
Negative(ref)	6276	1.00		
Positive	1134	0.89	(0.76,1.05)	0.163
Cardiovascular disease(CVD)				
No CVD(ref)	5938	1.00		
CVD	1472	1.49	(1.30,1.70)	0.000

Figure 3.6(a): Adjusted hazard ratio for mortality of dialysis patients by diastolic blood pressure (1997-2002 cohort)

