

# **CHAPTER 4**

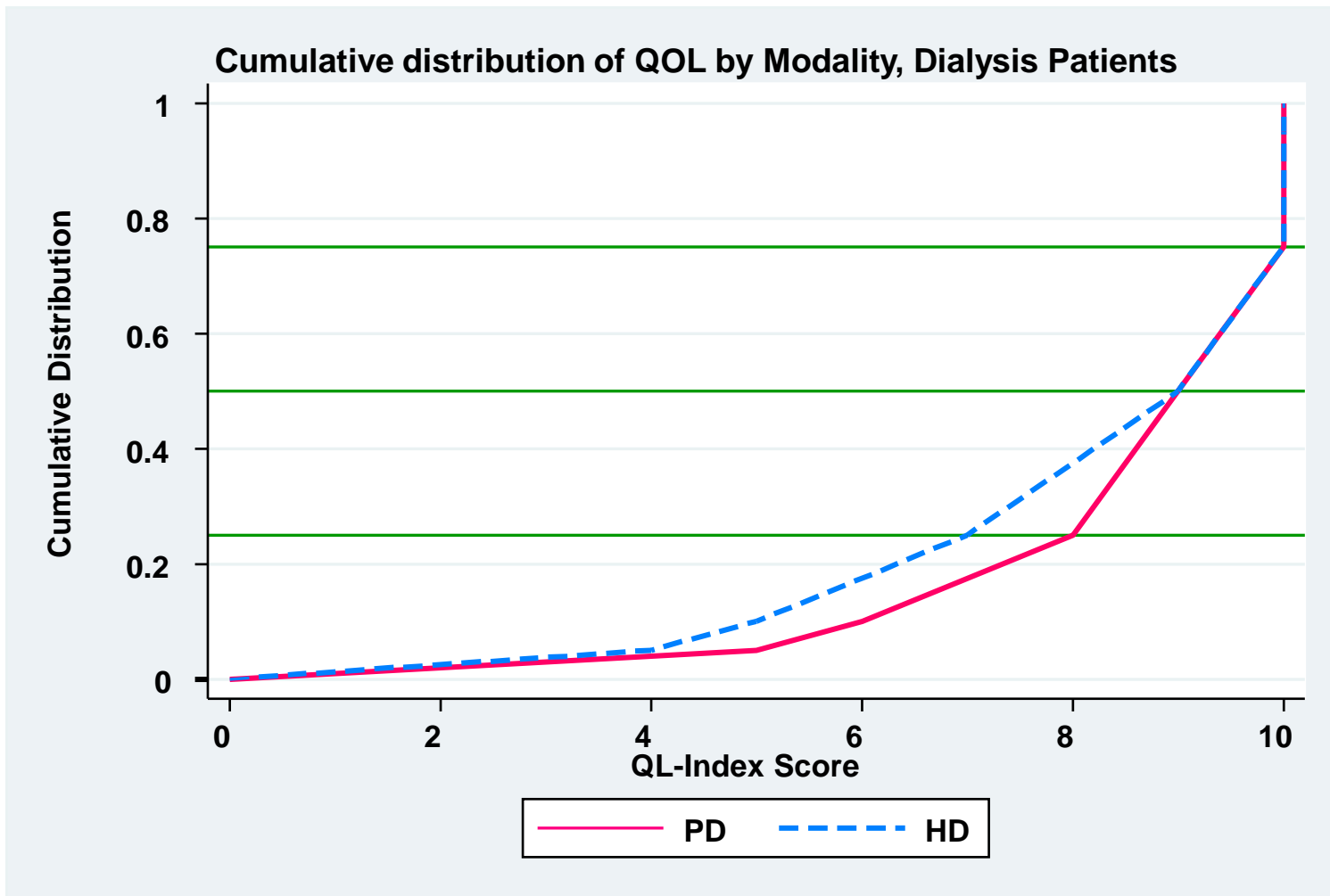
## **Quality Of Life and Rehabilitation Outcomes of Patients on Dialysis**

Liu Wen Jiun  
Chew Thian Fook  
Alinda Chiu Sze Fung  
Zaki Morad b Mohd Zaher

**Table 4.1: Cumulative distribution of QoL-Index score in relation to dialysis modality, All dialysis patients 2000-2009**

<b>Dialysis modality</b>	<b>PD</b>	<b>HD</b>
<b>Number of patients</b>	<b>3819</b>	<b>20680</b>
<b>Centile</b>		
<b>0</b>	<b>0</b>	<b>0</b>
<b>0.05</b>	<b>5</b>	<b>4</b>
<b>0.1</b>	<b>6</b>	<b>5</b>
<b>0.25 (LQ)</b>	<b>8</b>	<b>7</b>
<b>0.5 (median)</b>	<b>9</b>	<b>9</b>
<b>0.75 (UQ)</b>	<b>10</b>	<b>10</b>
<b>0.9</b>	<b>10</b>	<b>10</b>
<b>0.95</b>	<b>10</b>	<b>10</b>
<b>1</b>	<b>10</b>	<b>10</b>

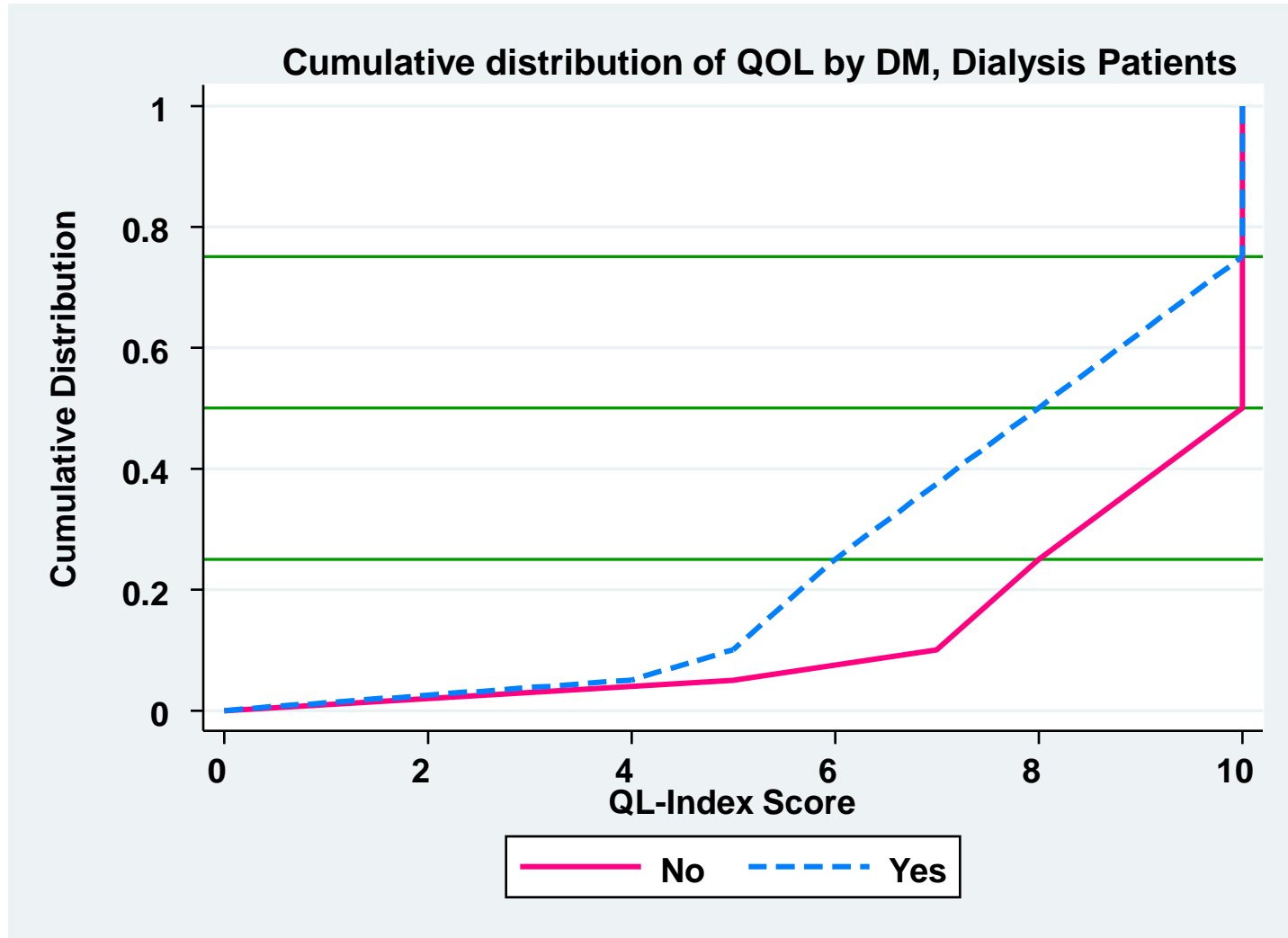
**Figure 4.1: Cumulative distribution of QoL-Index score in relation to Dialysis Modality, All Dialysis patients 2000-2009**



**Table 4.2: Cumulative distribution of QoL-Index score in relation to DM, All dialysis patients 2000-2009**

<b>Diabetes mellitus</b>	<b>No</b>	<b>Yes</b>
<b>Number of patients</b>	<b>11512</b>	<b>12987</b>
<b>Centile</b>		
<b>0</b>	<b>0</b>	<b>0</b>
<b>0.05</b>	<b>5</b>	<b>4</b>
<b>0.1</b>	<b>7</b>	<b>5</b>
<b>0.25 (LQ)</b>	<b>8</b>	<b>6</b>
<b>0.5 (median)</b>	<b>10</b>	<b>8</b>
<b>0.75 (UQ)</b>	<b>10</b>	<b>10</b>
<b>0.9</b>	<b>10</b>	<b>10</b>
<b>0.95</b>	<b>10</b>	<b>10</b>
<b>1</b>	<b>10</b>	<b>10</b>

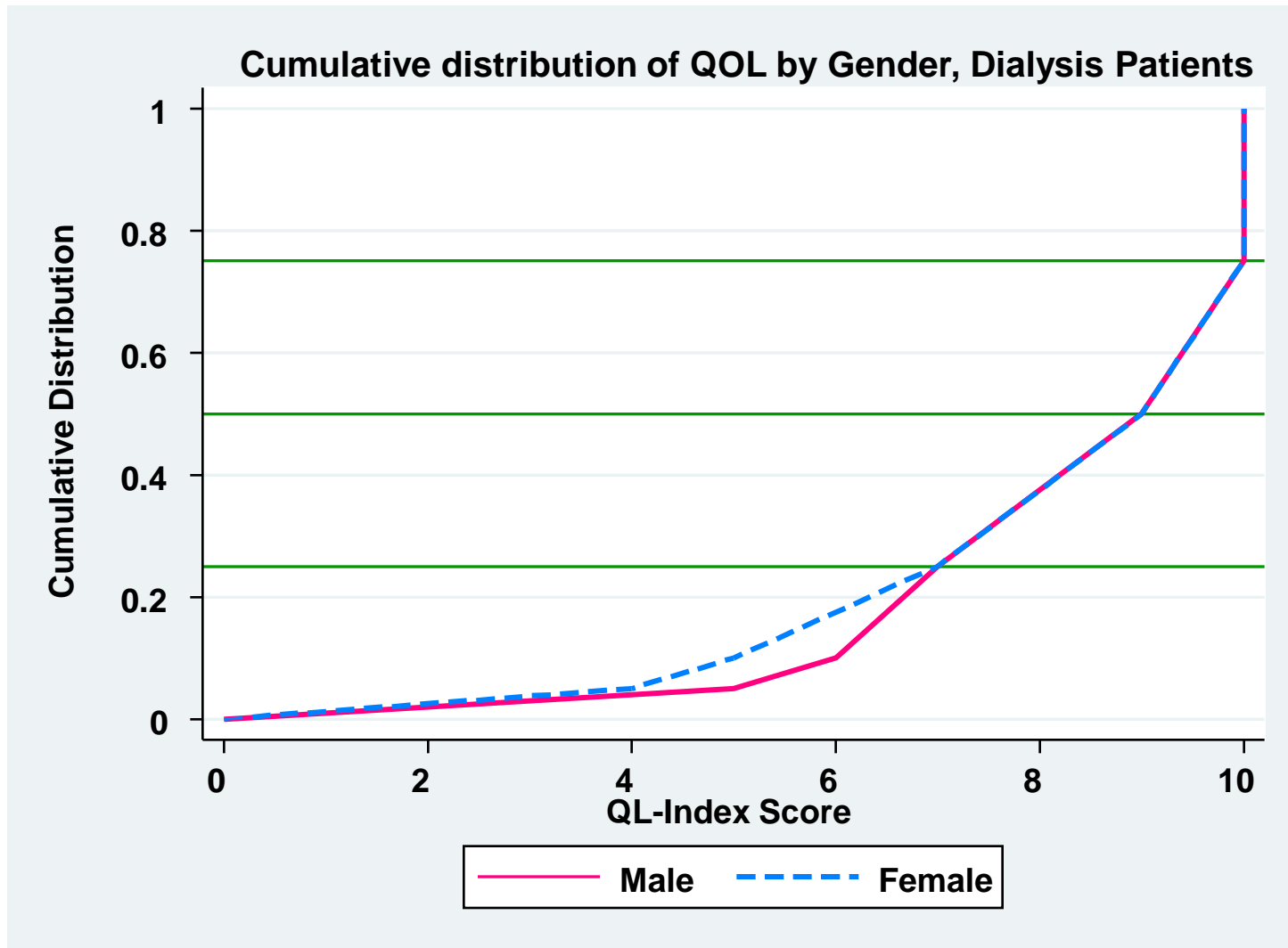
**Figure 4.2: Cumulative distribution of QoL-Index score in relation to DM, All Dialysis patients, 2000-2009**



**Table 4.3: Cumulative distribution of QoL-index score in relation to Gender, All Dialysis patients 2000-2009**

<b>Gender</b>	<b>Male</b>	<b>Female</b>
<b>Number of patients</b>	<b>13512</b>	<b>10987</b>
<b>Centile</b>		
<b>0</b>	<b>0</b>	<b>0</b>
<b>0.05</b>	<b>5</b>	<b>4</b>
<b>0.1</b>	<b>6</b>	<b>5</b>
<b>0.25 (LQ)</b>	<b>7</b>	<b>7</b>
<b>0.5 (median)</b>	<b>9</b>	<b>9</b>
<b>0.75 (UQ)</b>	<b>10</b>	<b>10</b>
<b>0.9</b>	<b>10</b>	<b>10</b>
<b>0.95</b>	<b>10</b>	<b>10</b>
<b>1</b>	<b>10</b>	<b>10</b>

**Figure 4.3: Cumulative distribution of QoL-Index score in relation to Gender, All Dialysis patients, 2000-2009**

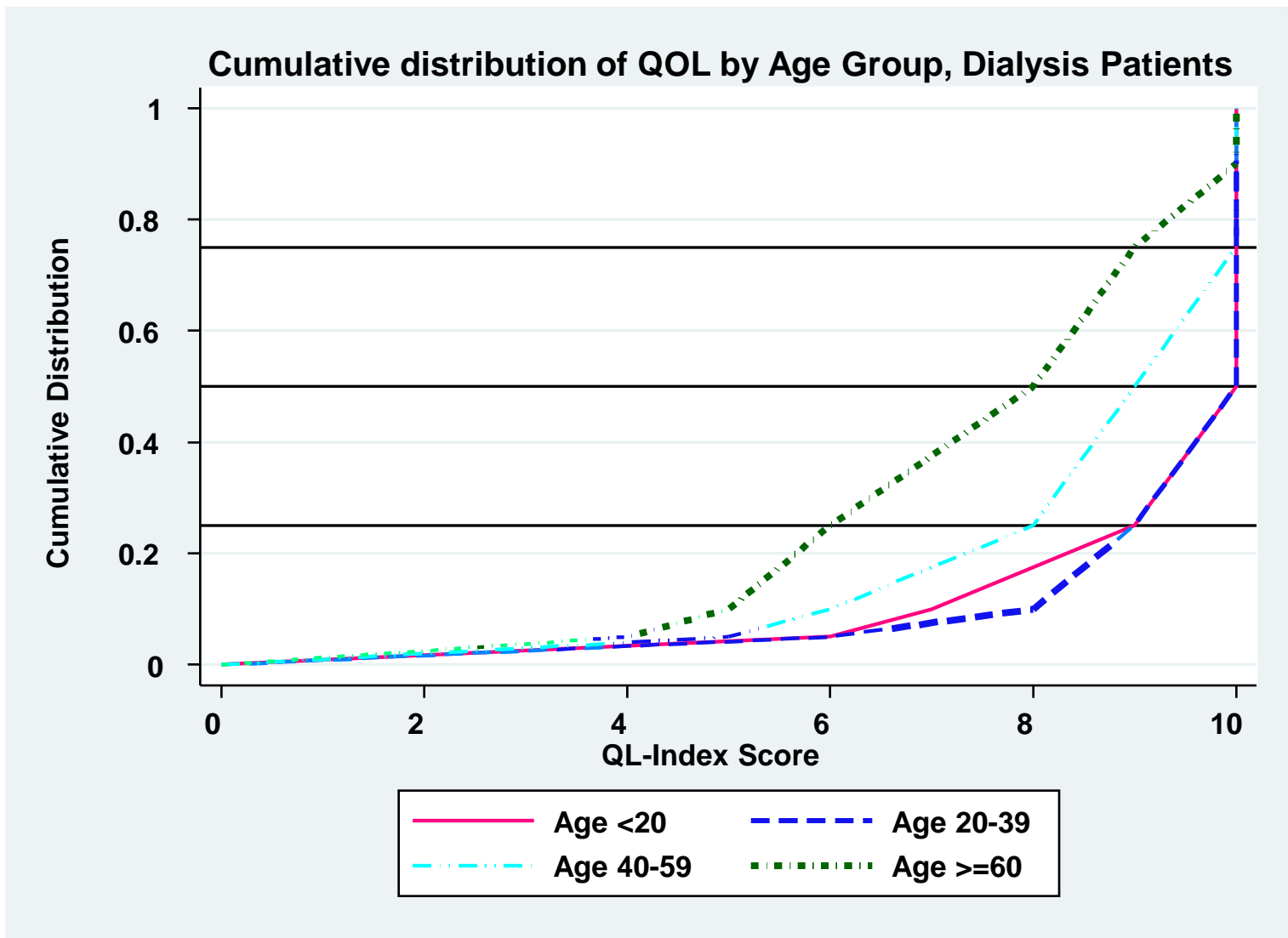


**Table 4.4: Cumulative distribution of QoL-index score in relation to Age, All Dialysis patients 2000-2009**

<b>Age group</b>	<b>&lt;20</b>	<b>20-39</b>	<b>40-59</b>	<b>&gt;=60</b>
<b>Number of patients</b>	<b>854</b>	<b>3824</b>	<b>11675</b>	<b>8146</b>
<b>Centile</b>				
<b>0</b>	<b>0</b>	<b>0</b>	<b>0</b>	<b>0</b>
<b>0.05</b>	<b>6</b>	<b>6</b>	<b>5</b>	<b>4</b>
<b>0.1</b>	<b>7</b>	<b>8</b>	<b>6</b>	<b>5</b>
<b>0.25 (LQ)</b>	<b>9</b>	<b>9</b>	<b>8</b>	<b>6</b>
<b>0.5 (median)</b>	<b>10</b>	<b>10</b>	<b>9</b>	<b>8</b>
<b>0.75 (UQ)</b>	<b>10</b>	<b>10</b>	<b>10</b>	<b>9</b>
<b>0.9</b>	<b>10</b>	<b>10</b>	<b>10</b>	<b>10</b>
<b>0.95</b>	<b>10</b>	<b>10</b>	<b>10</b>	<b>10</b>
<b>1</b>	<b>10</b>	<b>10</b>	<b>10</b>	<b>10</b>



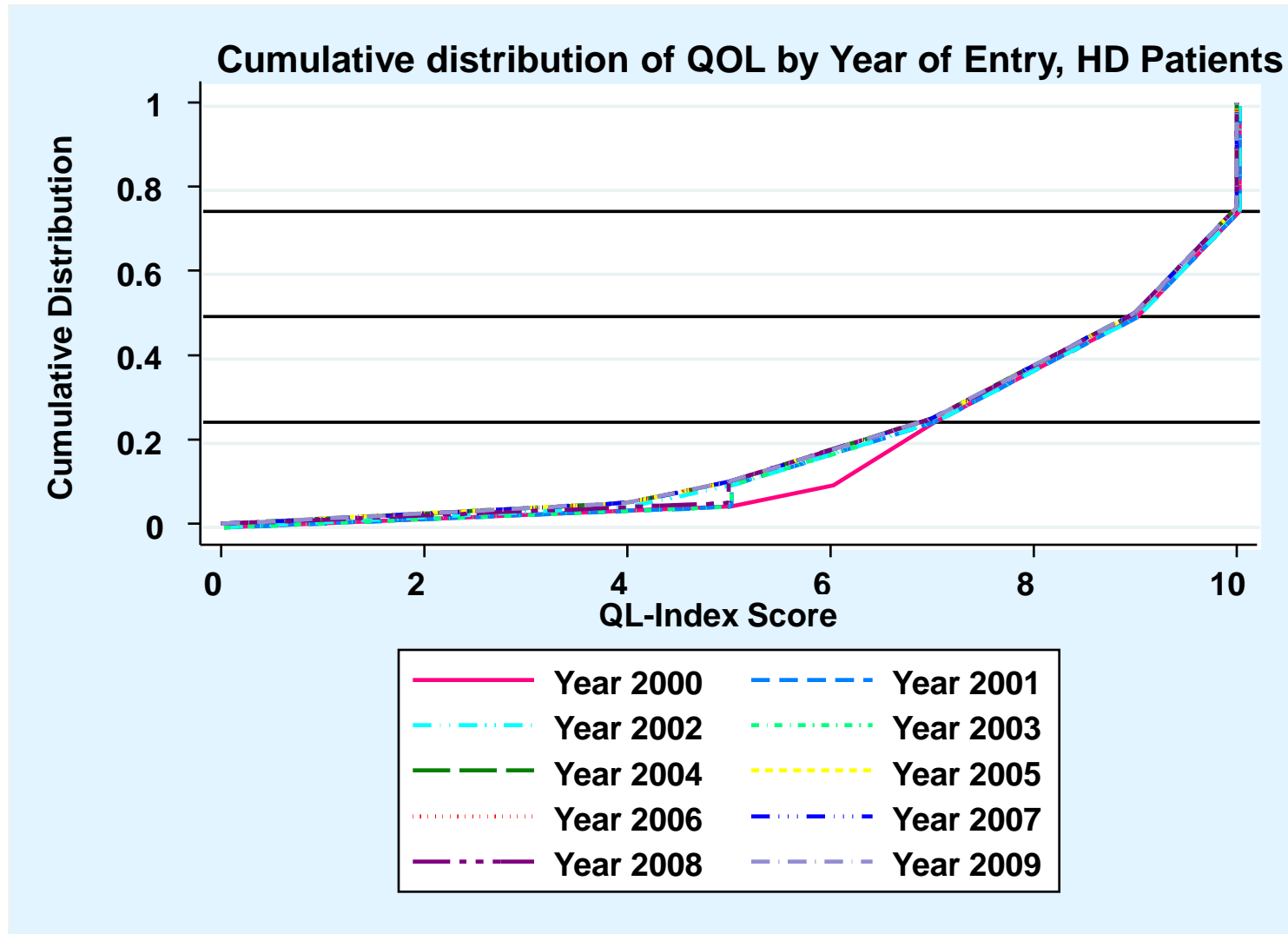
**Figure 4.4: Cumulative distribution of QoL-Index score in relation to Age, All Dialysis patients, 2000-2009**



**Table 4.5: Cumulative distribution of QoL-Index score in relation to year of entry, HD patients 2000-2009**

<b>Year of Entry</b>	<b>2000</b>	<b>2001</b>	<b>2002</b>	<b>2003</b>	<b>2004</b>	<b>2005</b>	<b>2006</b>	<b>2007</b>	<b>2008</b>	<b>2009</b>
<b>Number of patients</b>	<b>1278</b>	<b>1442</b>	<b>1657</b>	<b>1715</b>	<b>2063</b>	<b>2171</b>	<b>2541</b>	<b>2648</b>	<b>2895</b>	<b>2270</b>
<b>Centile</b>										
<b>0</b>	<b>0</b>	<b>0</b>	<b>0</b>	<b>0</b>	<b>0</b>	<b>0</b>	<b>0</b>	<b>0</b>	<b>0</b>	<b>0</b>
<b>0.05</b>	<b>5</b>	<b>5</b>	<b>4</b>	<b>5</b>	<b>4</b>	<b>4</b>	<b>4</b>	<b>4</b>	<b>5</b>	<b>4</b>
<b>0.1</b>	<b>6</b>	<b>5</b>	<b>5</b>	<b>5</b>	<b>5</b>	<b>5</b>	<b>5</b>	<b>5</b>	<b>5</b>	<b>5</b>
<b>0.25 (LQ)</b>	<b>7</b>	<b>7</b>	<b>7</b>	<b>7</b>	<b>7</b>	<b>7</b>	<b>7</b>	<b>7</b>	<b>7</b>	<b>7</b>
<b>0.5 (median)</b>	<b>9</b>	<b>9</b>	<b>9</b>	<b>9</b>	<b>9</b>	<b>9</b>	<b>9</b>	<b>9</b>	<b>9</b>	<b>9</b>
<b>0.75 (UQ)</b>	<b>10</b>	<b>10</b>	<b>10</b>	<b>10</b>	<b>10</b>	<b>10</b>	<b>10</b>	<b>10</b>	<b>10</b>	<b>10</b>
<b>0.9</b>	<b>10</b>	<b>10</b>	<b>10</b>	<b>10</b>	<b>10</b>	<b>10</b>	<b>10</b>	<b>10</b>	<b>10</b>	<b>10</b>
<b>0.95</b>	<b>10</b>	<b>10</b>	<b>10</b>	<b>10</b>	<b>10</b>	<b>10</b>	<b>10</b>	<b>10</b>	<b>10</b>	<b>10</b>
<b>1</b>	<b>10</b>	<b>10</b>	<b>10</b>	<b>10</b>	<b>10</b>	<b>10</b>	<b>10</b>	<b>10</b>	<b>10</b>	<b>10</b>

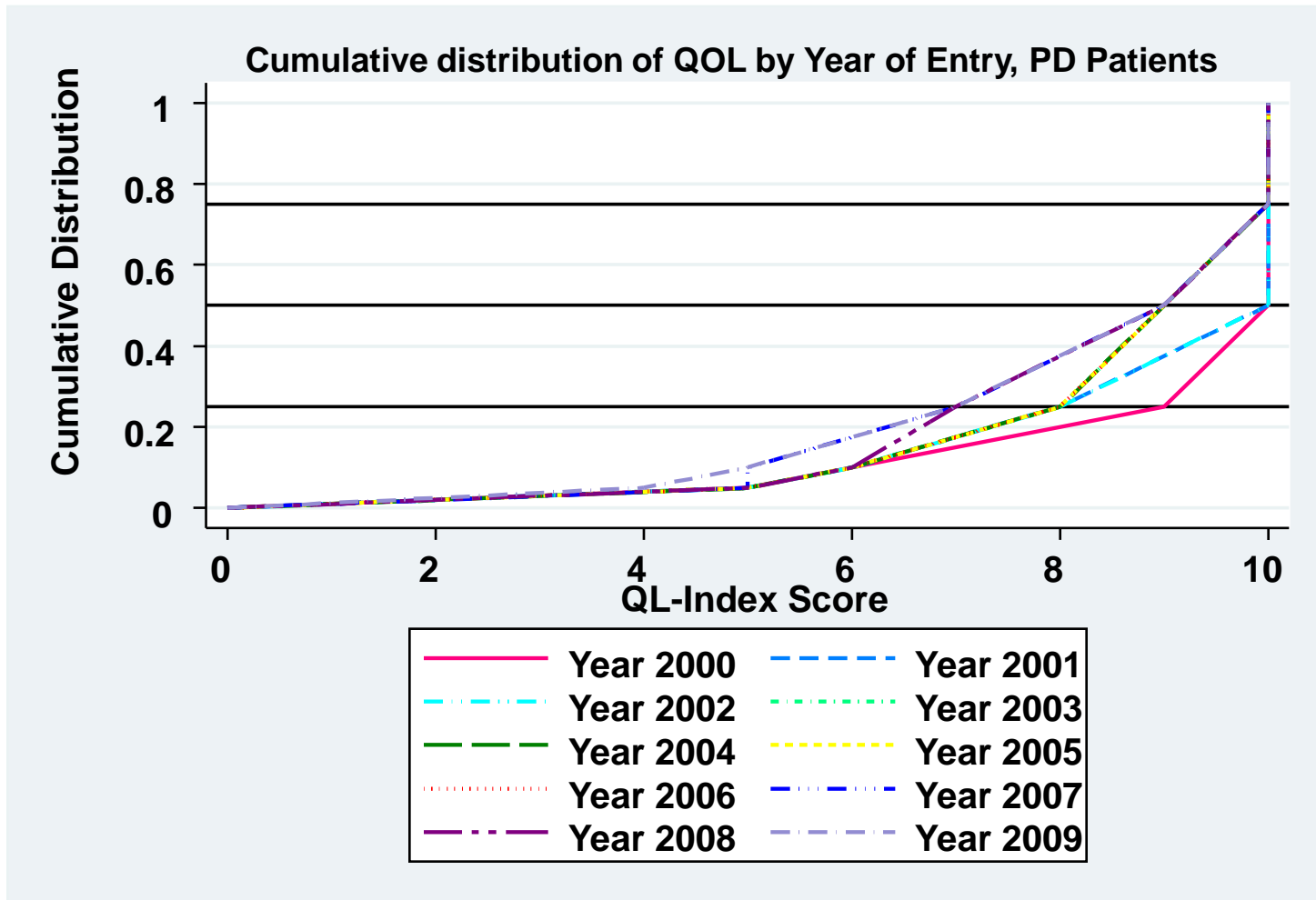
**Figure 4.5: Cumulative distribution of QoL-Index score in relation to year of entry, HD patients 2000-2009**



**Table 4.6: Cumulative distribution of QoL-Index score in relation to year of entry, PD patients 2000-2009**

<b>Year of Entry</b>	<b>2000</b>	<b>2001</b>	<b>2002</b>	<b>2003</b>	<b>2004</b>	<b>2005</b>	<b>2006</b>	<b>2007</b>	<b>2008</b>	<b>2009</b>
<b>Number of patients</b>	<b>188</b>	<b>269</b>	<b>320</b>	<b>369</b>	<b>307</b>	<b>319</b>	<b>425</b>	<b>526</b>	<b>571</b>	<b>525</b>
<b>Centile</b>										
<b>0</b>	<b>0</b>	<b>0</b>	<b>0</b>	<b>0</b>	<b>0</b>	<b>0</b>	<b>0</b>	<b>0</b>	<b>0</b>	<b>0</b>
<b>0.05</b>	<b>5</b>	<b>5</b>	<b>5</b>	<b>5</b>	<b>5</b>	<b>5</b>	<b>5</b>	<b>5</b>	<b>5</b>	<b>4</b>
<b>0.1</b>	<b>6</b>	<b>6</b>	<b>6</b>	<b>6</b>	<b>6</b>	<b>6</b>	<b>6</b>	<b>5</b>	<b>6</b>	<b>5</b>
<b>0.25 (LQ)</b>	<b>9</b>	<b>8</b>	<b>8</b>	<b>8</b>	<b>8</b>	<b>8</b>	<b>8</b>	<b>7</b>	<b>7</b>	<b>7</b>
<b>0.5 (median)</b>	<b>10</b>	<b>10</b>	<b>10</b>	<b>9</b>	<b>9</b>	<b>9</b>	<b>9</b>	<b>9</b>	<b>9</b>	<b>9</b>
<b>0.75 (UQ)</b>	<b>10</b>	<b>10</b>	<b>10</b>	<b>10</b>	<b>10</b>	<b>10</b>	<b>10</b>	<b>10</b>	<b>10</b>	<b>10</b>
<b>0.9</b>	<b>10</b>	<b>10</b>	<b>10</b>	<b>10</b>	<b>10</b>	<b>10</b>	<b>10</b>	<b>10</b>	<b>10</b>	<b>10</b>
<b>0.95</b>	<b>10</b>	<b>10</b>	<b>10</b>	<b>10</b>	<b>10</b>	<b>10</b>	<b>10</b>	<b>10</b>	<b>10</b>	<b>10</b>
<b>1</b>	<b>10</b>	<b>10</b>	<b>10</b>	<b>10</b>	<b>10</b>	<b>10</b>	<b>10</b>	<b>10</b>	<b>10</b>	<b>10</b>

**Figure 4.6: Cumulative distribution of QoL-Index score in relation to year of entry, PD patients 2000-2009**



**Table 4.7: Work related rehabilitation in relation to modality, dialysis patients, 2000 to 2009**

<b>Modality</b>	<b>PD</b>		<b>HD</b>	
	<b>No.</b>	<b>%</b>	<b>No.</b>	<b>%</b>
<b>Number of patients</b>	<b>1250</b>		<b>7993</b>	
<b>Able to return for Full or Part time for pay*</b>	<b>879</b>	<b>70</b>	<b>5561</b>	<b>70</b>
<b>Unable to work for pay</b>	<b>371</b>	<b>30</b>	<b>2432</b>	<b>30</b>

**Table 4.8 Work related rehabilitation in relation to year of entry, HD patients 2000 to 2009**

Year		2000	2001	2002	2003	2004	2005	2006	2007	2008	2009
Number of patients		598	616	703	717	833	827	966	958	1049	726
Able to return for Full or Part time for pay*	No.	462	448	523	529	587	584	678	654	673	423
	%	77	73	74	74	70	71	70	68	64	58
Unable to work for pay	No.	136	168	180	188	246	243	288	304	376	303
	%	23	27	26	26	30	29	30	32	36	42

**Table 4.9 Work related rehabilitation in relation to year of entry,  
PD patients 2000 to 2009**

Year		2000	2001	2002	2003	2004	2005	2006	2007	2008	2009
Number of patients		64	85	120	142	103	112	147	165	176	136
Able to return for Full or Part time for pay*	No.	43	69	90	110	73	83	105	109	113	84
	%	67	81	75	77	71	74	71	66	64	62
Unable to work for pay	No.	21	16	30	32	30	29	42	56	63	52
	%	33	19	25	23	29	26	29	34	36	38