

CHAPTER 10

Hepatitis on Dialysis

Teo Sue Mei
Clare Tan Hui Hong
Foo Sui Mei

Table 10.1: Prevalence of positive HBsAg and positive Anti-HCV at annual survey, HD patients 2000-2009

Year	No. of subjects	Prevalence of HBsAg+ (%)	Prevalence of Anti-HCV+ (%)
2000	4386	6	25
2001	5187	6	23
2002	6106	5	20
2003	6977	5	19
2004	7618	5	17
2005	8957	4	14
2006	11295	5	12
2007	12496	5	11
2008	14900	4	9
2009	16947	4	8

Table 10.2: Prevalence of positive HBsAg and positive Anti-HCV at annual survey, PD patients 2000-2009

Year	No. of subjects	Prevalence of HBsAg+ (%)	Prevalence of Anti-HCV+ (%)
2000	662	2	5
2001	781	2	3
2002	891	3	4
2003	1223	3	4
2004	1200	4	5
2005	1318	4	5
2006	1494	5	4
2007	1731	5	4
2008	2017	4	3
2009	2141	4	3

Table 10.3: Variation in Proportion of patients with positive HBsAg at annual survey among HD centres, 2009

Year	No. of centres	Min	5th Centile	LQ	Median	UQ	95th Centile	Max
2000	106	0	0	0	4	9	14	80
2001	126	0	0	0	5	9	15	90
2002	154	0	0	0	3	8	14	26
2003	181	0	0	0	3	8	15	67
2004	206	0	0	0	3	7	15	92
2005	235	0	0	0	2	7	15	100
2006	289	0	0	0	0	6	16	94
2007	314	0	0	0	0	6	15	100
2008	359	0	0	0	0	6	13	95
2009	389	0	0	0	0	5	13	92

Figure 10.3: Variation in Proportion of patients with positive HBsAg among HD centres, 2009

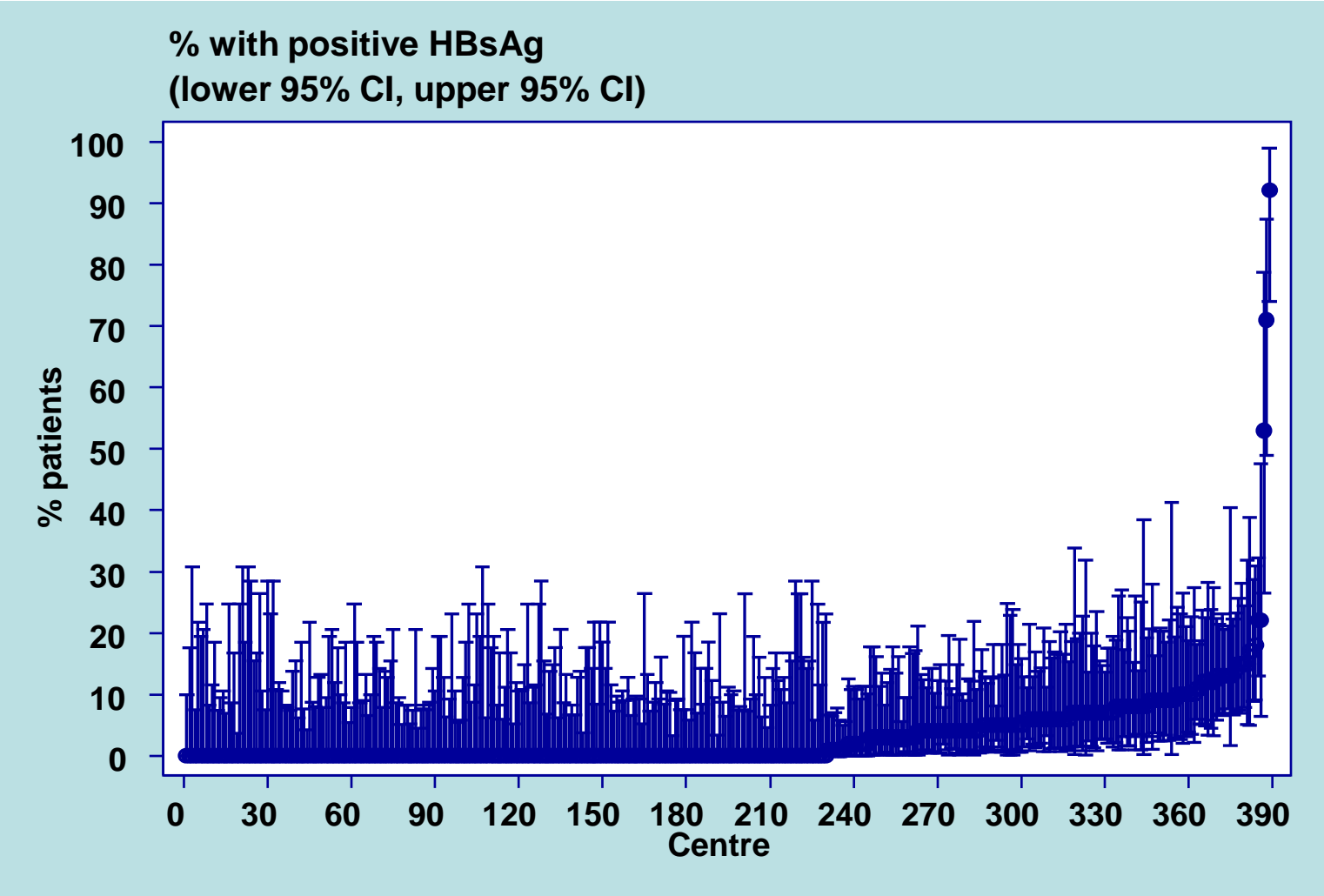


Table 10.4: Variation in Proportion of patients with positive HBsAg at annual survey among PD centres, 2009

Year	No. of centres	Min	5th Centile	LQ	Median	UQ	95th Centile	Max
2000	11	0	0	0	1	4	5	5
2001	12	0	0	0	2	3	9	9
2002	15	0	0	1	3	6	18	18
2003	18	0	0	2	4	6	8	8
2004	18	0	0	1	3	5	11	11
2005	19	0	0	1	3	5	10	10
2006	22	0	0	2	4	6	9	13
2007	23	0	0	0	4	6	7	11
2008	23	0	0	1	3	6	10	13
2009	23	0	0	1	3	5	10	10

Figure 10.4: Variation in Proportion of patients with positive HBsAg among PD centres, 2009

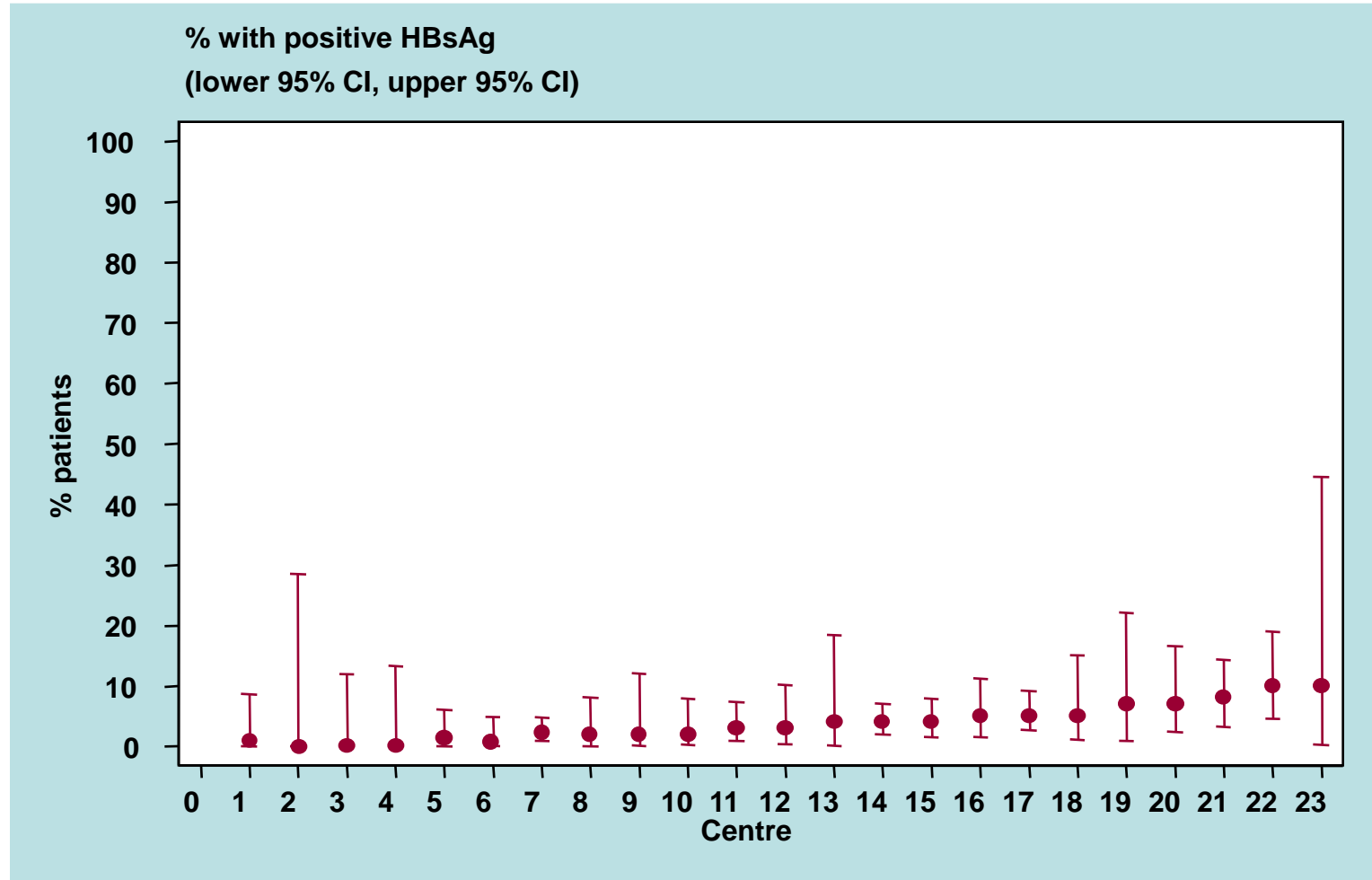


Table 10.5: Variation in Proportion of patients with positive anti-HCV at annual survey among HD centres, 2000-2009

Year	No. of centre	Min	5th centile	LQ	Median	UQ	95th centile	Max
2000	106	0	0	9	18.5	31	67	90
2001	126	0	0	7	17	30	65	89
2002	154	0	0	5	14	26	58	96
2003	181	0	0	5	14	25	50	92
2004	208	0	0	4	11	25	50	100
2005	237	0	0	2	10	21	40	96
2006	288	0	0	0	8	17	42	98
2007	313	0	0	0	7	14	35	100
2008	358	0	0	0	5	12	32	100
2009	388	0	0	0	3	10	27	98

Figure 10.5: Variation in Proportion of patients with positive anti-HCV among HD centres, 2009

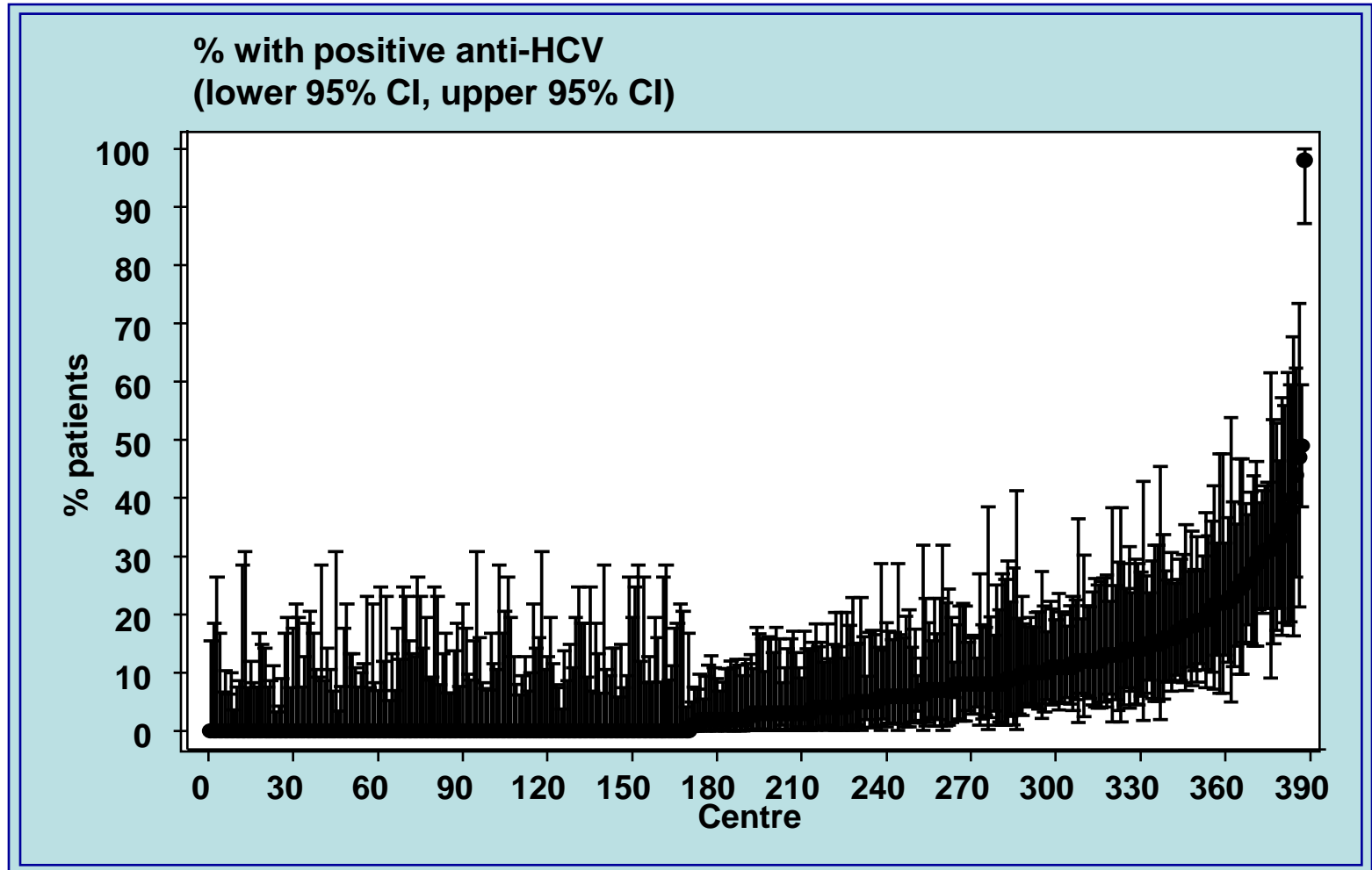


Table 10.6: Variation in Proportion of patients with positive anti-HCV at annual survey among PD centres, 2000-2009

Year	No. of centre	Min	5th centile	LQ	Median	UQ	95th centile	Max
2000	11	0	0	2	3	8	10	10
2001	12	0	0	0	3	4	7	7
2002	15	0	0	0	3	8	11	11
2003	18	0	0	1	4.5	7	9	9
2004	18	0	0	1	4.5	7	10	10
2005	19	0	0	2	4	8	10	10
2006	22	0	0	1	2.5	6	8	11
2007	23	0	0	0	2	6	8	9
2008	23	0	0	0	3	4	5	9
2009	23	0	0	0	2	4	6	8

Figure 10.6: Variation in Proportion of patients with positive anti-HCV among PD centres, 2009

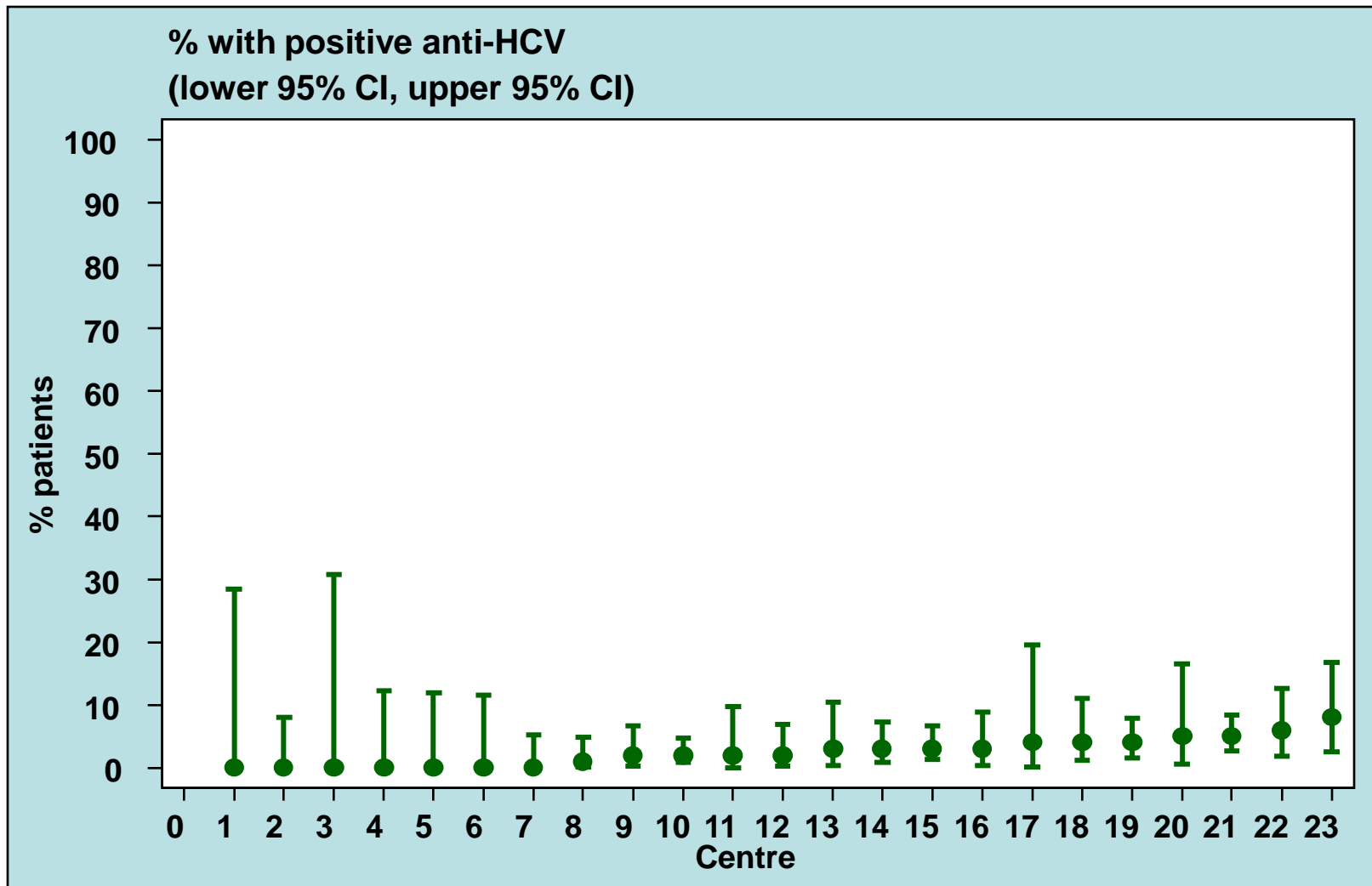


Table 10.7a: Risk factors in relation to HD practices for sero-conversion to anti-HCV positive among sero-negative patients

Risk factor		Number of patients	Risk Ratio	95% CI	p-value
Assistance to Perform HD	Self care <i>(ref)</i>	163	1.00		
	Partial self care	129	0.74	(0.59, 0.94)	0.013
	Completely assisted	361	0.45	(0.39, 0.57)	0.000
Dialyzer Reuse	less than 10 <i>(ref)</i>	299	1.00		
	more than 10	391	0.93	(0.80, 1.08)	0.340
Dialyzer Reprocessing System	Fully Auto <i>(ref)</i>	383	1.00		
	Semi Auto	45	0.83	(0.61, 1.14)	0.248
	Manual	35	0.87	(0.61, 1.23)	0.434
Age	<=20 <i>(ref)</i>	35	1.00		
	21-40	247	0.90	(0.63, 1.30)	0.588
	41-60	320	0.44	(0.31, 0.63)	0.000
	>60	102	0.20	(0.13, 0.29)	0.000
Gender	Female <i>(ref)</i>	280	1.00		
	Male	410	1.13	(0.97, 1.32)	0.109
Diabetic	No <i>(ref)</i>	495	1.00		
	Yes	195	0.37	(0.32,0.44)	0.000
Previous Renal Transplant	No <i>(ref)</i>	586	1.00		
	Yes	104	4.67	(3.76, 5.81)	0.000
History of Blood Transfusion	No <i>(ref)</i>	384	1.00		
	Yes	306	1.38	(1.19,1.61)	0.000

Table 10.7b: Risk factors for seroconversion to anti-HCV positive among sero-negative patients in PD

Risk factor		Number of patients	Risk Ratio	95% CI	p-value
Age	<=20 (<i>ref</i>)	4	1.00		
	21-40	14	2.24	(0.74, 6.84)	0.157
	41-60	31	2.37	(0.83, 6.74)	0.106
	>60	3	0.34	(0.08, 1.52)	0.157
Gender	Female (<i>ref</i>)	28	1.00		
	Male	24	0.86	(0.49, 1.48)	0.577
Diabetes	No (<i>ref</i>)	45	1.00		
	Yes	7	0.18	(0.08, 0.39)	0.000
Switch from HD to PD	No (<i>ref</i>)	30	1.00		
	Yes	22	7.73	(4.42, 13.52)	0.000
Previous Renal Transplant	No (<i>ref</i>)	47	1.00		
	Yes	5	1.83	(0.72, 4.66)	0.020
History of Blood Transfusion	No (<i>ref</i>)	23	1.00		
	Yes	29	1.93	(1.11, 3.31)	0.019