

29th REPORT OF THE MALAYSIAN DIALYSIS & TRANSPLANT REGISTRY 2021

Owner:

Malaysian Society of Nephrology

The National Renal Registry is funded with grants from:

Malaysian Society of Nephrology
National Kidney Foundation, Malaysia
Duopharma
Baxter
Kyowa Kirin

15th August 2023

© National Renal Registry, Malaysia

No. e-ISSN: 3009-0679



Published by:

The National Renal Registry

(Malaysian Society of Nephrology)

Unit 19-01, Q Sentral,
2A Jln Stesen Sentral 2,
50470 Kuala Lumpur,
Malaysia

Telephone : (603) 2276 3686 & 2276 3687

e-mail : nrr@msn.org.my

Web site : <https://www.msn.org.my>

Important information:

1. This report is copyrighted. However, it may be freely reproduced without the permission of the National Renal Registry. Acknowledgment would be appreciated. Suggested citation is: Hooi LS and Ong LM (Eds) Twenty-Ninth Report of the Malaysian Dialysis and Transplant 2021, Kuala Lumpur 2023
2. This report is published electronically on the website at: <https://www.msn.org.my>
3. This annual report of Malaysian Dialysis and Transplant Registry will be published annually

ACKNOWLEDGEMENT

The Malaysian Dialysis and Transplant Registry of the National Renal Registry would like to thank each and everyone who have in one way or another contributed to the success of the Malaysian Dialysis and Transplant Registry.

In particular we would like to thank the following:

**The Nephrologists, physicians and staff of the Dialysis and Transplant follow-up centre: Thank you for participating in the Registry.
The success of the Registry depends on you.**

The Ministry of Health, Malaysia.

National Institutes of Health, in particular Mr. Ridwan Sanaudi for their tireless effort in supporting the work of registries.

NATIONAL RENAL REGISTRY ADVISORY COMMITTEE 2022 - 2024

Dr Sunita Bavanandan	Chair NRR
Dr Hooi Lai Seong	MDTR Editor
Dato' Dr Ong Loke Meng	MDTR Co-Editor
Dr Rosnawati Yahya	Chair MyKAS Committee
Dr Thong Kah Mean	Chair MRRB Committee
Assoc. Prof. Dr Maisarah Jalalonmuhali	Chair Research & Publication Committee
Dr Yee Seow Yeing	MOH Representative
Professor Dr Lim Soo Kun	MOE Representative
Dr Philip N. Jeremiah	Private Representative
Dr Esther Tan Zhao Zhi	NRR Treasurer
Dr Sunita Bavanandan	Chair NRR

MDTR DATA MANAGEMENT COMMITTEE 2022 - 2024

Dr Hooi Lai Seong	Chair
Dato' Dr Ong Loke Meng	Member
Dr Sunita Bavanandan	Member
Dr Yee Seow Yeing	Member
Dr Shahnaz Shah Firdaus Khan	Member

NRR STAFF

Mr Choo Cheh Loo	NRR Manager
Ms Wan Najdah Wan Mohamad Ali	Assistant Manager

STATISTICIAN

Ms Chew Sze Ming

IT (eNRR)

Ms Lim Jie Ying	IT Manager
Mr Loke Heng Kiat	Software Engineering Manager
Ms Julia Ali	Software Engineer
Mr Sebastian Thoo	Data Manager

ABOUT THE MALAYSIAN DIALYSIS AND TRANSPLANT REGISTRY (MDTR)

The Malaysia Dialysis and Transplant Registry (MDTR) collects information on patients with end stage renal disease (ESRD) on renal replacement therapy (RRT) in Malaysia.

Objectives:

The objectives of the registry are as follows:

- 1. Describe the natural history of ESRD.** The registry shall describe the characteristics of patients with ESRD, its management, patient survival and quality of life outcomes with treatment; and shall describe variation thereof across different groups, healthcare sectors or geographic regions, and its secular trend over time in Malaysia.
- 2. Determine effectiveness of treatments for ESRD.** The registry shall determine clinical effectiveness and cost effectiveness of treatments of ESRD in real-world clinical practices in Malaysia.
- 3. Monitor safety and harm of products and services used in the treatment of ESRD.** The registry shall serve as an active surveillance system for the occurrence of unexpected or harmful events for products and services.
- 4. Evaluating access to and quality of treatment services for ESRD.** The registry shall assess differences between providers or patient populations based on performance measures that compare treatments provided or outcomes achieved with "gold standards" (e.g., evidence-based guidelines) or comparative benchmarks for specific health outcomes (e.g., risk-adjusted survival rates). Such programs may be used to identify disparities in access to care, demonstrate opportunities for improvement, establish differentials for payment by third parties, or provide transparency through public reporting.
- 5. To maintain the national renal transplant waiting list electronically – the eMyKAS or electronic Malaysian Kidney Allocation System.** The electronic-MyKAS (e-MyKAS) system will generate an auto e-mail to the Person-In-charge (PIC) and Nephrologist in-charge (NIC) of the patients high on the list. The PIC or NIC will need to counsel and obtain consent and identify any contraindications to transplantation.

Once the patients have completed medical, surgical, and psycho-social assessments, they will be assessed at designated transplant centres to determine their fitness for transplant surgery, following which they will be placed in the active waiting list for a deceased kidney transplant.

The MyKAS list will be re-run on a yearly basis. The outcome of the MyKAS system will be evaluated on a yearly basis and the allocation criteria will be revised every 3 years.

Registry design:

This is a multi-center, observational cohort study designed to evaluate the health outcomes of patients with ESRD undergoing treatment at participating clinical centres. Patient inclusion criterion is deliberately broad and shall include any patient with a confirmed diagnosis of ESRD.

There is no prescribed study visits. Patient shall attend the clinical site as and when required per the standard of care at the site. Required data shall be collected as they become available.

- A clinical site shall notify all new patients to the registry, and shall continue to do so until the termination of the registry. Patients shall be follow-up for life.
- Participation. Site shall notify the patients' treatment to the registry in a calendar year of its participation. A site shall similarly notify patients during each year of its participation in the registry.

Registry study population:

The registry study population consists of male or female patients with ESRD to be recruited from participating sites in Malaysia. Participation in this study is voluntary. However, in accordance with the Private Health-care Facilities Act 1998 (AKTA 586), all dialysis health facility are required to submit data to the Malaysian Dialysis and Transplant Registry (MDTR).

All clinical centres or sites that satisfy the following selection criteria will be invited to participate:

1. This registry is opened to all clinical sites that provide RRT services for patients with ESRD in Malaysia.
2. Each site shall have a Principal Investigator who is also a licensed physician / Surgeon and a qualified professional experienced with ESRD management.
3. Each site shall appoint a Site Coordinator (SC). The SC is the person at the participating clinical site who is responsible for all aspects of registry management and data collection at site, and who will liaise with the Clinical Registry Manager (CRM) and Clinical Registry Assistant (CRA) at the Registry Coordinating Centre (RCC).
4. Each site shall accept responsibility for data collection, as well as for ensuring proper record keeping and registry document filing.
5. Each site shall agree to comply with the registry procedures and shall be willing to be subjected to ongoing review of data by CRM or CRA or other representative of MDTR. This may include one or more site visits by prior arrangement, if necessary.

Patient eligibility criteria:

- All new patients with ESRD undergoing treatment at a participating clinical site are eligible for entry into the registry.
- In addition, a site may opt to enter existing patients on follow-up at the site into the registry.

Registry data:

The data elements to be collected by the registry shall be relevant and reliable with modest burden to sites, shall comply with existing data standard where this exists, shall be compatible with established data set used by other existing registries, and shall employ standard terminology where available.

Two datasets are defined:

- Core dataset: These are data elements that are needed to address the key questions for which the registry was created.
- Non-core dataset: these are speculative data elements included to provide an opportunity to generate hypotheses or to explore other subsidiary questions not of primary interest to the registry.

The data domains and related specific data elements to be collected by this registry is tabulated below:

A	Identifier	Name, NRIC number, Other identifying document numbers, Address, Contact numbers
B	Demographics	Age, Sex, Ethnicity, Educational attainment, Occupation, Household Income group, Weight & Height, Use of tobacco, Funding for Treatment
C	Medical history	Medical history/ comorbidities, Family history
D	ESRD diagnosis	Date of first diagnosis, Date re- entering each RRT.
E	Laboratory Investigations	Date & time of tests, Blood chemistry, Hematology, Serology
F	Treatment	Modalities of RRT - haemodialysis, peritoneal dialysis; treatment of other uraemic complications; kidney transplantation
G	Outcomes	Patient survival; death, date of death, cause of death, Quality of Life/ Work rehabilitation status
H	Economics	Source of funding for dialysis treatment, and immunosuppressive drug treatment for transplantation
I	Healthcare provider characteristics	Sector providing dialysis treatment, (private, public or NGO)

PARTICIPATING HAEMODIALYSIS CENTRES 2021

Haemodialysis Centres	AR	Haemodialysis Centres	AR
801 Rumah Sakit Angkatan Tentera (Kuching), HD Unit	>=80%	Beluran Hospital, HD Unit	>=80%
94 Hospital Angkatan Tentera (Terendak), HD Unit	>=80%	Bentong Hospital, HD Unit	>=80%
96 Hospital Angkatan Tentera (Lumut), HD Unit	>=80%	Bertam Dialysis Centre, HD Unit	>=80%
AD Dhouha Haemodialysis Centre, HD Unit	>=80%	Besut Hospital, HD Unit	>=80%
Aiman Dialysis Centre, HD Unit	>=80%	Betong Hospital, HD Unit	>=80%
Al-Islam Specialist Hospital, HD Unit	>=80%	Bintulu Hospital, HD Unit	>=80%
Alkom Bakti Dialysis, HD Unit	>=80%	Bintulu Specialist Hospital, HD Unit	>=80%
Al-Musoffa Haemodialysis Centre (Balok) Sdn Bhd, HD Unit	>=80%	Borneo Specialist Hospital (Miri), HD Unit	>=80%
Al-Musoffa Haemodialysis Centre, HD Unit	>=80%	Borneo Specialist Hospital, HD Unit	>=80%
Alor Gajah Dialysis Centre, HD Unit	>=80%	BP Renal Care (Batu Pahat), HD Unit	>=80%
Alor Gajah Hospital, HD Unit	>=80%	BP Renal Care (Kluang), HD Unit	>=80%
Alor Setar Dialysis Centre, HD Unit	>=80%	BP Renal Care (Rengit), HD Unit	>=80%
Ampang Hospital, HD Unit	>=80%	BP Renal Care Simpang Renggam, HD Unit	>=80%
AMS Haemodialysis Centre, HD Unit	>=80%	BP Renalcare (Segamat) Sdn Bhd, HD Unit	>=80%
Anson Bay Medical Centre, HD Unit	>=80%	BP Renalcare (Yong Peng) Sdn Bhd, HD Unit	>=80%
Asia Renal Care (KL), HD Unit	<80%	Buddhist Tzu Chi Dialysis Centre (Butterworth), HD Unit	>=80%
Asia Renal Care (KL), HD Unit	>=80%	Buddhist Tzu Chi HD Centre (Penang), HD Unit	>=80%
Asia Renal Care (KL), HD Unit	>=80%	Buddhist Tzu-Chi Dialysis Centre (Kedah), HD Unit	>=80%
Assunta Hospital, HD Unit	>=80%	Bukit Mertajam Hospital, HD Unit	>=80%
Aura Renal Sdn Bhd, HD Unit	>=80%	Carlatan Dialysis Centre (Bukit Mertajam), HD Unit	>=80%
Avisena Dialysis Centre, HD Unit	>=80%	Carlatan Dialysis Centre (Sungai Petani), HD Unit	>=80%
Avisena Dialysis Setia Alam, HD Unit	NIL	Changkat Melintang Hospital, HD Unit	>=80%
B. Braun Avitum (Butterworth) Dialysis Centre, HD Unit	>=80%	Che Eng Khor Centre, HD Unit	>=80%
B. Braun Avitum (Kota Kinabalu) Dialysis Centre, HD Unit	>=80%	Cheras Dialysis Centre, HD Unit	>=80%
B. Braun Avitum (Tawau) Dialysis Centre, HD Unit	>=80%	CHKMUS-MAA Medicare Charity, HD Unit	>=80%
Bahiah Dialysis Centre, HD Unit	>=80%	Coop Dialysis, HD Unit	>=80%
Bakti-NKF Dialysis Centre, HD Unit	>=80%	Dahlia Dialysis Centre, HD Unit	>=80%
Balik Pulau Hospital, HD Unit	>=80%	Dalat Hospital, HD Unit	>=80%
Baling Hospital, HD Unit	>=80%	Damai Dialysis (Merlimau), HD Unit	>=80%
Bangi Dialysis Centre, HD Unit	>=80%	Damai Dialysis Sdn Bhd (Masjid Tanah), HD Unit	>=80%
Banting Hospital, HD Unit	>=80%	Damansara Premier Dialysis Centre, HD Unit	>=80%
Batu Gajah Hospital, HD Unit	>=80%	Damansara Specialist Hospital, HD Unit	>=80%
Bau Hospital, HD Unit	>=80%	Darul Aman Ventures, HD Unit	>=80%
BBA (Puchong) Dialysis Centre, HD Unit	>=80%	Darul Naim Dialysis, HD Unit	>=80%
Beaufort Hospital, HD Unit	>=80%	Dialysis Ajil, HD Unit	>=80%

PARTICIPATING HAEMODIALYSIS CENTRES

2021 (cont.)

Haemodialysis Centres	AR	Haemodialysis Centres	AR
Dialisis Jertih, HD Unit	>=80%	Hospital Angkatan Tentera Tuanku Mizan, HD Unit	>=80%
Dialisis Pakar Kemaman, HD Unit	>=80%	Hospital Daerah Daro, HD Unit	>=80%
Dialisis Sri Andalas, HD Unit	>=80%	Hospital Enche' Besar Hajjah Khalsom, HD Unit	>=80%
Dkasih Hemodialisis (Gemas), HD Unit	>=80%	Hospital Pakar An-nur Specialist Hospital, HD Unit	<80%
Dkasih Hemodialisis (Jempol), HD Unit	>=80%	Hospital Pakar Sultanah Fatimah (Muar), HD Unit	>=80%
D'kasih Hemodialisis (Seremban), HD Unit	>=80%	Hospital Pusrawi, HD Unit	>=80%
Dr. Mokhtar Medical & Hemodialysis, HD Unit	>=80%	Hospital Queen Elizabeth II, HD Unit	>=80%
DSS Dialysis Centre (Rawang), HD Unit	>=80%	Hospital Sultanah Hajjah Kalsom, HD Unit	>=80%
Duchess of Kent Hospital, HD Unit	>=80%	Hospital Sultanah Maliha Langkawi, HD Unit	>=80%
Dungun Hospital, HD Unit	>=80%	Hospital Sultanah Nora Ismail, HD Unit	>=80%
Eagles Dialysis Centre Berhad, HD Unit	>=80%	Hospital Tunku Azizah, Kuala Lumpur (Paed), HD Unit	>=80%
EAM Dialysis Centre, HD Unit	>=80%	Hospital Wanita Dan Kanak-kanak Sabah (Paed), HD Unit	>=80%
Falah Nephrocare, HD Unit	>=80%	Hospital Wanita Dan Kanak-Kanak Sabah, HD Unit	>=80%
Fatimah Hospital, HD Unit	>=80%	Hudaz Dialysis Centre Pasir Pekan, HD Unit	>=80%
Foresight Dialysis Bandar Tasik Kesuma, HD Unit	>=80%	Hudaz Tunjong Dialysis Centre, HD Unit	>=80%
Foresight Dialysis Padang Serai, HD Unit	>=80%	Hulu Terengganu Hospital, HD Unit	>=80%
Foresight Dialysis Pasir Puteh, HD Unit	>=80%	Ibnu Al-Nafis Dialysis Centre, HD Unit	>=80%
Foresight Dialysis Tasek Gelugor, HD Unit	>=80%	IUM Dialysis Centre, HD Unit	>=80%
Georgetown Specialist Hospital, HD Unit	>=80%	Iman Dialysis, HD Unit	>=80%
Gerik Hospital, HD Unit	>=80%	Imercy Dialysis Centre., HD Unit	>=80%
Gleneagles Kota Kinabalu, HD Unit	>=80%	Island Hospital, HD Unit	>=80%
Gleneagles Kuala Lumpur, HD Unit	>=80%	Jasin Hospital, HD Unit	>=80%
Gleneagles Medini, HD Unit	>=80%	Jelebu Hospital, HD Unit	>=80%
Gleneagles Penang, HD Unit	>=80%	Jeli Hospital, HD Unit	>=80%
Gua Musang Hospital, HD Unit	>=80%	Jempol Hospital, HD Unit	>=80%
Haemodialysis Unit Ara Damansara Medical Centre, HD Unit	>=80%	Jengka Hospital, HD Unit	>=80%
Haemodialysis Yakin Prima, HD Unit	<80%	Jerantut Hospital, HD Unit	>=80%
Happy Kid Nees Dialysis Centre, HD Unit	>=80%	JHM- Rotary Haemodialysis Centre (Penang), HD Unit	>=80%
Harmony Sofia Dialysis Centre, HD Unit	>=80%	Jitra Hospital, HD Unit	>=80%
Harmony Vision Dialysis Centre, HD Unit	>=80%	JJ Lions Dialysis Centre, HD Unit	>=80%
HDU Tatau (Bintulu), HD Unit	>=80%	Johor Specialist Hospital, HD Unit	>=80%
Healthcare Dialysis Centre, HD Unit	>=80%	JQA Dialysis Foundation, HD Unit	>=80%
Hemodialisis Bukit Payong, HD Unit	>=80%	Kaizenbros Dialysis Centre, HD Unit	>=80%
Hemodialisis Paka, HD Unit	>=80%	Kajang Hospital, HD Unit	>=80%
Hemodialisis Yayasan Veteran ATM (S Kembangan), HD Unit	>=80%	Kampar Hospital, HD Unit	>=80%

PARTICIPATING HAEMODIALYSIS CENTRES

2021 (cont.)

Haemodialysis Centres	AR	Haemodialysis Centres	AR
Kanowit Hospital, HD Unit	>=80%	KPJ Sabah Specialist Hospital, HD Unit	<80%
Kapit Hospital, HD Unit	>=80%	KPJ Selangor Specialist Hospital, HD Unit	>=80%
Kay Tee Dialysis, HD Unit	>=80%	KPJ Sentosa KL Specialist Hospital, HD Unit	>=80%
Kek Lok Si Charitable Hospital, HD Unit	>=80%	KPJ Seremban Specialist Hospital, HD Unit	>=80%
Kemaman Hospital, HD Unit	>=80%	KPJ Tawakkal Health Centre, HD Unit	<80%
Keningau Hospital, HD Unit	>=80%	Kuala Kangsar Hospital, HD Unit	>=80%
Kepala Batas Hospital, HD Unit	>=80%	Kuala Krai Hospital, HD Unit	>=80%
Klinik Kesihatan Bandar Mas, HD Unit	>=80%	Kuala Kubu Bharu Hospital, HD Unit	>=80%
Klinik Kesihatan Batu Niah, HD Unit	>=80%	Kuala Lipis Hospital, HD Unit	>=80%
Klinik Kesihatan Debak, HD Unit	>=80%	Kuala Lumpur Hospital, HD Unit	>=80%
Klinik Kesihatan Kemahang, HD Unit	>=80%	Kuala Lumpur Lions Renal Centre, HD Unit	>=80%
Klinik Kesihatan Mahligai, HD Unit	>=80%	Kuala Nerang Hospital, HD Unit	>=80%
Klinik Kesihatan Nabawan, HD Unit	>=80%	Kuala Penyu Hospital, HD Unit	>=80%
Klinik Kesihatan Pangkor, HD Unit	>=80%	Kuantan Clinical Diagnostic Centre, HD Unit	<80%
Klinik Kesihatan Song, HD Unit	>=80%	Kuantan Dialysis Centre, HD Unit	>=80%
Klinik Kesihatan Sungai Lembing, HD Unit	>=80%	Kuching Specialist Hospital, HD Unit	>=80%
Klinik Waqaf An-Nur (Ijok), HD Unit	>=80%	Kudat Hospital, HD Unit	>=80%
KMI Kuantan Medical Centre, HD Unit	>=80%	Kulim Hospital, HD Unit	>=80%
Kota Belud Hospital, HD Unit	>=80%	Kunak Hospital, HD Unit	>=80%
Kota Kinabatangan Hospital, HD Unit	>=80%	Labuan Hospital, HD Unit	>=80%
Kota Marudu Hospital, HD Unit	>=80%	Lahad Datu Hospital, HD Unit	>=80%
Kota Tinggi Hospital, HD Unit	>=80%	Lam Wah Ee Hospital, HD Unit	>=80%
KPJ Ampang Puteri Specialist Hospital, HD Unit	>=80%	Lawas Hospital, HD Unit	>=80%
KPJ Bandar Maharani Specialist Hospital, HD Unit	>=80%	Leo Dialysis Centre, HD Unit	>=80%
KPJ Batu Pahat Specialist Hospital, HD Unit	>=80%	Lim Boon Sho Dialysis Centre, HD Unit	>=80%
KPJ Hemodialysis Kluang, HD Unit	>=80%	Limbang Hospital, HD Unit	>=80%
KPJ Kajang Specialist Hospital, HD Unit	>=80%	Lions Club Kota Budaya Dialysis Centre, HD Unit	>=80%
KPJ Klang Specialist Hospital (1), HD Unit	>=80%	Loh Guan Lye Specialist Centre, HD Unit	>=80%
KPJ Klang Specialist Hospital (2), HD Unit	>=80%	Lundu Hospital, HD Unit	>=80%
KPJ Kluang Utama Specialist Hospital, HD Unit	<80%	Machang Hospital, HD Unit	>=80%
KPJ Kuantan Dialysis Centre, HD Unit	>=80%	Mahkota Medical Centre, HD Unit	>=80%
KPJ Penang Specialist Hospital, HD Unit	<80%	MAHSA Dialysis Centre, HD Unit	>=80%
KPJ Perdana Specialist Hospital, HD Unit	>=80%	MAIDAM Hospital Besut, HD Unit	>=80%
KPJ Puteri Specialist Hospital, HD Unit	>=80%	Manipal Hospitals, HD Unit	>=80%
KPJ Rawang Specialist Hospital, HD Unit	>=80%	Marudi Hospital, HD Unit	>=80%

PARTICIPATING HAEMODIALYSIS CENTRES

2021 (cont.)

Haemodialysis Centres	AR	Haemodialysis Centres	AR
MB Star Rawatan Dialisis (Hutan Melintang), HD Unit	>=80%	NSCMH Dialysis Care Cawangan Lukut, HD Unit	>=80%
MB Star Rawatan Dialisis (Kelana Jaya), HD Unit	>=80%	NSCMH Dialysis Care Cawangan Mantin, HD Unit	>=80%
MB Star Rawatan Dialisis (Teluk Intan), HD Unit	>=80%	NSCMH Dialysis Care Cawangan Rantau, HD Unit	>=80%
MB Star Rawatan Dialisis Puchong Utama, HD Unit	>=80%	NSCMH Dialysis Care Cawangan Sepang, HD Unit	>=80%
MDZ Haemodialysis Centre, HD Unit	<80%	NSCMH Dialysis Care Cawangan Seputeh, HD Unit	>=80%
Mediway Dialysis, HD Unit	<80%	NSCMH Dialysis Care Cawangan Seri Kembangan, HD Unit	>=80%
Melaka Hospital, HD Unit	>=80%	NSCMH Dialysis Care Cawangan Tawau, HD Unit	>=80%
Mentakab Haemodialysis Unit, HD Unit	>=80%	NSCMH Dialysis Care Cawangan Yong Peng, HD Unit	>=80%
Mersing Hospital, HD Unit	>=80%	Nucare Dialysis Centre, HD Unit	>=80%
Mersing Rotary Haemodialysis Centre, HD Unit	>=80%	Nur Dialysis Centre, HD Unit	>=80%
Metro Specialist Hospital, HD Unit	>=80%	Nur Iman Dialysis Pahang, HD Unit	>=80%
Miri Hospital, HD Unit	>=80%	Oriental Melaka Straits Medical Centre, HD Unit	>=80%
Muadzam Shah Hospital, HD Unit	>=80%	Pahang Buddhist Association Haemodialysis Centre (Mentakab), HD Unit	>=80%
Muar Dialysis, HD Unit	>=80%	Pahang Buddhist Association, HD Unit	>=80%
Muar Lions Renal Centre, HD Unit	>=80%	Pantai Hospital Ampang, HD Unit	>=80%
Muhibah Renal Care, HD Unit	>=80%	Pantai Hospital Ayer Keroh, HD Unit	>=80%
Mukah Hospital, HD Unit	>=80%	Pantai Hospital Batu Pahat, HD Unit	>=80%
Mynephro Dialysis Sdn Bhd, HD Unit	>=80%	Pantai Hospital Ipoh, HD Unit	>=80%
Myrenal Dialysis Centre, HD Unit	>=80%	Pantai Hospital Klang, HD Unit	>=80%
Mysha Qasih Dialysis Centre, HD Unit	>=80%	Pantai Hospital Laguna Merbok, HD Unit	>=80%
Nefrocare Haemodialysis (SKC) Sdn Bhd, HD Unit	<80%	Pantai Hospital Penang, HD Unit	>=80%
Nefrocare Haemodialysis, HD Unit	>=80%	Pantai Hospital Sungai Petani, HD Unit	>=80%
NEPH Dialysis Centre Sdn Bhd, HD Unit	>=80%	Pantai-ARC Dialysis Services, HD Unit	>=80%
Neph Sdn Bhd (Sg Ara), HD Unit	<80%	Papar Hospital, HD Unit	>=80%
Nephcare Dialysis Centre, HD Unit	>=80%	Parit Buntar Hospital, HD Unit	>=80%
Nilai Dialysis Centre, HD Unit	>=80%	Pasir Gudang Specialist Hospital, HD Unit	>=80%
Nobel Dialysis Centre (Kota Belud), HD Unit	>=80%	Pasir Mas Hospital, HD Unit	>=80%
Nobel Dialysis Centre (Kota Kinabalu), HD Unit	>=80%	Pekan Hospital, HD Unit	>=80%
Nobel Dialysis Centre (Tuaran), HD Unit	>=80%	Pelangi Haemodialysis, HD Unit	>=80%
Normah Medical Specialist Centre, HD Unit	>=80%	Penang Adventist Hospital, HD Unit	>=80%
Northern Dialysis Centre, HD Unit	>=80%	Penang Caring Dialysis Society, HD Unit	>=80%
NSCMH 1 Dialysis Care, HD Unit	>=80%	Perak Community Specialist Hospital, HD Unit	>=80%
NSCMH Dialysis Care Cawangan Bahau, HD Unit	>=80%	Persada Dialysis Centre, HD Unit	>=80%
NSCMH Dialysis Care Cawangan Gemas, HD Unit	>=80%	Persatuan Amal Chin Malaysia Barat, HD Unit	>=80%
NSCMH Dialysis Care Cawangan Kuala Pilah, HD Unit	>=80%	Persatuan Buah Pinggang Sabah, HD Unit	>=80%

PARTICIPATING HAEMODIALYSIS CENTRES

2021 (cont.)

Haemodialysis Centres	AR	Haemodialysis Centres	AR
Persatuan Buah Pinggang Sandakan Sabah, HD Unit	>=80%	Pulau Pinang Hospital, HD Unit	>=80%
Persatuan Dialisis Cahaya Kuching, HD Unit	>=80%	Pusat Amal Hemodialisis Dato' Lee Kok Chee, HD Unit	>=80%
Persatuan Dialisis Kurnia Petaling Jaya, HD Unit	>=80%	Pusat Cakna Dialisis, HD Unit	NIL
Persatuan Dialisis Masjid Jamek Sultan Abdul Aziz, HD Unit	>=80%	Pusat Dialisis & Kesihatan Masjid Bandar Baru Uda, HD Unit	>=80%
Persatuan Haemodialysis Klang, HD Unit	>=80%	Pusat Dialisis Ahmad Khalif, HD Unit	>=80%
Persatuan Hemodialisis Sacred Hope, Kuching, HD Unit	>=80%	Pusat Dialisis Aiman Cheras, HD Unit	>=80%
Persatuan Hemodialisis Kinabalu Sabah, HD Unit	>=80%	Pusat Dialisis Aiman Shah Alam, HD Unit	>=80%
Persatuan Kebajikan Haemodialisis St Anne BM, HD Unit	>=80%	Pusat Dialisis Airah, HD Unit	<80%
Persatuan Kebajikan Pusat Haemodialisis Masjid At-Taqwa, HD Unit	>=80%	Pusat Dialisis Albukhary, HD Unit	>=80%
Persatuan Membaiki Akhlak-Che Luan Khor_NKF, HD Unit	>=80%	Pusat Dialisis Al-Ehsan, HD Unit	>=80%
Pertubuhan Bakti Fo En Bandar Kulim, HD Unit	>=80%	Pusat Dialisis Al-Hayat, HD Unit	>=80%
Pertubuhan Dialisis Rotary-Satu Hati, HD Unit	>=80%	Pusat Dialisis Amal MAA MEDICARE, HD Unit	>=80%
Pertubuhan Haemodialisis Hope (Ipoh), HD Unit	>=80%	Pusat Dialisis Amal MAA-Medicare (Kota Bharu), HD Unit	>=80%
Pertubuhan Hemodialisis Muhibbah Segamat (Cawangan Jementah), HD Unit	>=80%	Pusat Dialisis An-Nur (Pasir Gudang), HD Unit	>=80%
Pertubuhan Hemodialisis Muhibbah Segamat (Labis), HD Unit	>=80%	Pusat Dialisis An'nur Seksyen 13, HD Unit	>=80%
Pertubuhan Hemodialisis Muhibbah Segamat, HD Unit	>=80%	Pusat Dialisis Ar Rahman Bachok Kelantan, HD Unit	>=80%
Pertubuhan Hemodialisis Seberang Perai Selatan, HD Unit	>=80%	Pusat Dialisis Bulan Sabit Merah Miri, HD Unit	>=80%
Pertubuhan Kebajikan Amitabha, HD Unit	>=80%	Pusat Dialisis Cahaya, HD Unit	>=80%
Pertubuhan Perkhidmatan Hemodialisis Nor Kasih Larut Matang dan Selama Perak, HD unit	>=80%	Pusat Dialisis CAT Negeri Pulau Pinang, HD Unit	>=80%
Peter Mole MAA-Medicare Charity Dialysis Centre, HD Unit	>=80%	Pusat Dialisis Davita Bandar Baru Uda, HD Unit	>=80%
Pitas Hospital, HD Unit	>=80%	Pusat Dialisis Davita Bangi, HD Unit	>=80%
Platinum Dialysis Centre, HD Unit	>=80%	Pusat Dialisis Davita Bangsar, HD Unit	>=80%
PMA Chan Meng Khor-MAA Medicare Charity Dialysis Centre, HD Unit	>=80%	Pusat Dialisis Davita Batang Berjuntai, HD Unit	>=80%
Pontian Hospital, HD Unit	>=80%	Pusat Dialisis Davita Benut, HD Unit	>=80%
Pontian Rotary Haemodialysis Centre, HD Unit	>=80%	Pusat Dialisis Davita Cheras, HD Unit	>=80%
Port Dickson Hospital, HD Unit	>=80%	Pusat Dialisis Davita Johor Bahru, HD Unit	>=80%
Premier Renal Care, HD Unit	>=80%	Pusat Dialisis Davita Kajang, HD unit	>=80%
Prima Dialisis Kluang, HD Unit	>=80%	Pusat Dialisis Davita Kota Damansara, HD Unit	>=80%
Prima Dialisis Lagenda Putra, HD Unit	>=80%	Pusat Dialisis Davita Kota Kinabalu, HD Unit	>=80%
Prima Dialisis Nusajaya, HD Unit	>=80%	Pusat Dialisis Davita Kota Tinggi, HD Unit	>=80%
Prima Dialisis Pekan Nanas, HD Unit	>=80%	Pusat Dialisis Davita Kuala Pilah, HD Unit	>=80%
Prima Dialysis Masai, HD Unit	>=80%	Pusat Dialisis Davita Kuala Sungai Baru, HD Unit	>=80%
Prince Court Medical Centre, HD Unit	>=80%	Pusat Dialisis Davita Masjid Tanah, HD Unit	>=80%
Prodiso Dialysis Centre, HD Unit	>=80%	Pusat Dialisis Davita Meru, HD Unit	>=80%
Pulau Pinang Hospital (Paed), HD Unit	NIL	Pusat Dialisis Davita Papar, HD Unit	>=80%

PARTICIPATING HAEMODIALYSIS CENTRES

2021 (cont.)

Haemodialysis Centres	AR	Haemodialysis Centres	AR
Pusat Dialisis Davita Pendang, HD Unit	>=80%	Pusat Dialisis Mahmood Dialysis Centre Gua Musang, HD Unit	NIL
Pusat Dialisis Davita Puchong, HD Unit	>=80%	Pusat Dialisis MAIDAM, HD Unit	>=80%
Pusat Dialisis Davita Rembau, HD Unit	>=80%	Pusat Dialisis MAIS (Melawati), HD Unit	>=80%
Pusat Dialisis Davita Sandakan, HD Unit	>=80%	Pusat Dialisis MAIS (Shah Alam), HD Unit	>=80%
Pusat Dialisis Davita Seberang Perai, HD Unit	>=80%	Pusat Dialisis MAIS Cawangan Bukit Jelutong, HD Unit	>=80%
Pusat Dialisis Davita Seremban, HD Unit	>=80%	Pusat Dialisis MAIS Cawangan Kapar, HD Unit	>=80%
Pusat Dialisis Davita Sri Rampai, HD Unit	<80%	Pusat Dialisis MAIS Cawangan Sungai Besar, HD Unit	>=80%
Pusat Dialisis Davita Sungai Besar, HD Unit	>=80%	Pusat Dialisis MAIS, HD Unit	>=80%
Pusat Dialisis Davita Taman Seri Setia, HD Unit	>=80%	Pusat Dialisis Majlis Ugama Islam dan Adat Resam Melayu Pahang (Cawangan Jengka), HD Unit	>=80%
Pusat Dialisis Davita Taman Tasik Jaya, HD Unit	>=80%	Pusat Dialisis Majlis Ugama Islam dan Adat Resam Melayu Pahang, HD Unit	>=80%
Pusat Dialisis Davita Tanjung Karang, HD Unit	>=80%	Pusat Dialisis Makmur (Batu Gajah), HD Unit	>=80%
Pusat Dialisis Davita Wangsa Maju, HD Unit	>=80%	Pusat Dialisis Marjina (Ayer Hitam), HD Unit	>=80%
Pusat Dialisis De' Langkap, HD Unit	>=80%	Pusat Dialisis Marjina, HD Unit	>=80%
Pusat Dialisis Dhuha, HD Unit	NIL	Pusat Dialisis Mesra (Kuala Selangor), HD Unit	>=80%
Pusat Dialisis Dungun, HD Unit	>=80%	Pusat Dialisis Muafakat, HD Unit	>=80%
Pusat Dialisis Ehsan Perak (Bagan Serai) 2_HD Unit	>=80%	Pusat Dialisis Mukmin Bahau, HD Unit	>=80%
Pusat Dialisis FN, HD Unit	<80%	Pusat Dialisis Mukmin Bandar Sri Permaisuri, HD Unit	>=80%
Pusat Dialisis Foresight Dialysis Bandar Puncak Alam, HD Unit	<80%	Pusat Dialisis Mukmin Gurun, HD Unit	>=80%
Pusat Dialisis Foresight Dialysis Bandar Saujana Putra, HD Unit	>=80%	Pusat Dialisis Mukmin Ipoh, HD Unit	>=80%
Pusat Dialisis Foresight Dialysis Bukit Payong, HD Unit	>=80%	Pusat Dialisis Mukmin Kuala Lipis, HD Unit	>=80%
Pusat Dialisis Foresight Dialysis Pokok Sena, HD Unit	<80%	Pusat Dialisis Mukmin Salak Tinggi, HD Unit	>=80%
Pusat Dialisis Foresight Dialysis Tikam Batu, HD Unit	NIL	Pusat Dialisis Mukmin Seremban, HD Unit	>=80%
Pusat Dialisis Foresight Dialysis Tok Bali, HD Unit	>=80%	Pusat Dialisis Mukmin Sikamat, HD Unit	>=80%
Pusat Dialisis Hudaz Tumpat Dialysis Centre, HD Unit	>=80%	Pusat Dialisis Mukmin Simpang Ampat, HD Unit	>=80%
Pusat Dialisis Ibnu Sina (Kuala Ketil), HD Unit	>=80%	Pusat Dialisis Mukmin Sri Andalas, HD Unit	>=80%
Pusat Dialisis Ideal, HD Unit	>=80%	Pusat Dialisis Mukmin Sungai Buloh, HD Unit	<80%
Pusat Dialisis Ikhlas, HD Unit	>=80%	Pusat Dialisis Mukmin Telok Panglima Garang, HD Unit	>=80%
Pusat Dialisis IMU Dialysis Centre, HD Unit	>=80%	Pusat Dialisis Mukmin Temerloh, HD Unit	>=80%
Pusat Dialisis Indah (Subang Jaya), HD Unit	>=80%	Pusat Dialisis Murni, HD Unit	>=80%
Pusat Dialisis Intan, HD Unit	>=80%	Pusat Dialisis Mustapha Kamal, HD Unit	>=80%
Pusat Dialisis Jasmine, HD Unit	>=80%	Pusat Dialisis Mutiara (Ayer Tawar), HD Unit	>=80%
Pusat Dialisis Khidmat, HD Unit	<80%	Pusat Dialisis Mutiara (Cawangan), HD Unit	>=80%
Pusat Dialisis Klinik Kesihatan Simpang Renggam, HD Unit	>=80%	Pusat Dialisis Mutiara, HD Unit	>=80%
Pusat Dialisis Klinik Waqaf An-nur Masjid Al-Isma'ili, HD Unit	>=80%	Pusat Dialisis My Angkasa (Temerloh), HD Unit	>=80%
Pusat Dialisis Lestari, HD Unit	>=80%	Pusat Dialisis Myangkasa (K. Kedah), HD Unit	>=80%

PARTICIPATING HAEMODIALYSIS CENTRES

2021 (cont.)

Haemodialysis Centres	AR	Haemodialysis Centres	AR
Pusat Dialisis Nefro Utama (Pontian), HD Unit	>=80%	Pusat Dialisis Pakar (Kuantan), HD Unit	>=80%
Pusat Dialisis Nefro Utama Alor Setar, HD Unit	>=80%	Pusat Dialisis Pakar (Pekan), HD Unit	>=80%
Pusat Dialisis Nephrocare (Bukit Piatu), HD Unit	>=80%	Pusat Dialisis Pakar Medi-Nefron (Lestari), HD Unit	>=80%
Pusat Dialisis Nephrocare (Cawangan Bandar Penawar), HD Unit	>=80%	Pusat Dialisis Pakar Medi-Nefron (Putra Permai), HD Unit	>=80%
Pusat Dialisis Nephrocare (Klang), HD Unit	>=80%	Pusat Dialisis Pelangi Sdn Bhd, HD Unit	>=80%
Pusat Dialisis Nephrocare Global (Cawangan Kajang), HD Unit	>=80%	Pusat Dialisis Pengkalan Hulu, HD Unit	NIL
Pusat Dialisis Nephrocare Global (Cawangan Sri Rampai), HD Unit	>=80%	Pusat Dialisis Perbadanan Islam (Johor Bahru), HD Unit	>=80%
Pusat Dialisis Nephrocare Global (Cawangan Tanjung Karang), HD Unit	>=80%	Pusat Dialisis Perbadanan Islam (Pontian), HD Unit	>=80%
Pusat Dialisis NKF - Bonuslink (Kota Bharu), HD Unit	>=80%	Pusat Dialisis Perbadanan Islam Johor (Ayer Hitam), HD Unit	>=80%
Pusat Dialisis NKF - Dato' Dr GA Sreenevasan, HD Unit	>=80%	Pusat Dialisis Perbadanan Islam Johor (Taman Rinting), HD Unit	>=80%
Pusat Dialisis NKF - Fo Yi (Unit I), HD Unit	>=80%	Pusat Dialisis Perbadanan Islam Mersing, HD Unit	>=80%
Pusat Dialisis NKF Nanyang Setapak, HD Unit	>=80%	Pusat Dialisis Perdana, HD Unit	>=80%
Pusat Dialisis NKF-BonusLink Yayasan Buah Pinggang Kebangsaan Malaysia, HD Unit	>=80%	Pusat Dialisis Pertama Kepala Batas, HD Unit	>=80%
Pusat Dialisis NKF-Calvary, HD Unit	>=80%	Pusat Dialisis Pertama Rawang, HD Unit	>=80%
Pusat Dialisis NKF-Charis Cheras, HD Unit	<80%	Pusat Dialisis PPBPT, HD Unit	>=80%
Pusat Dialisis NKF-Chempaka, HD Unit	>=80%	Pusat Dialisis Prima, HD Unit	<80%
Pusat Dialisis NKF-Fo Yi (Unit II), HD Unit	>=80%	Pusat Dialisis Qaseh PKPP, HD Unit	>=80%
Pusat Dialisis NKF-Kelab Apex, HD Unit	>=80%	Pusat Dialisis Rakyat (Lembah Keramat), HD Unit	>=80%
Pusat Dialisis NKF-Kelab Lions Alor Star, HD Unit	>=80%	Pusat Dialisis Rakyat Ampang, HD Unit	>=80%
Pusat Dialisis NKF-Kidney Association of Sarawak Rotary, HD Unit	>=80%	Pusat Dialisis Rakyat Sementa, HD Unit	>=80%
Pusat Dialisis NKF-Rotary Damansara, HD Unit	>=80%	Pusat Dialisis Rakyat Taman Medan, HD Unit	>=80%
Pusat Dialisis NKF-Sang Riang (Triang), HD Unit	>=80%	Pusat Dialisis Renal Pure, HD Unit	>=80%
Pusat Dialisis NKF-Yayasan Buah Pinggang Kemaman, HD Unit	>=80%	Pusat Dialisis Renal-Link (Papar), HD Unit	NIL
Pusat Dialisis NKF-Yayasan Dialisis Pertubuhan Pendidikan Akhlak Taiping, HD Unit	>=80%	Pusat Dialisis Serai Wangi (Bukit Mertajam), HD Unit	>=80%
Pusat Dialisis NKF-Yayasan Dialysis Pendidikan Akhlak Perak, HD Unit	>=80%	Pusat Dialisis Serai Wangi, HD Unit	>=80%
Pusat Dialisis NKF-Yayasan Pembangunan Keluarga Darul Ta'zim, HD Unit	>=80%	Pusat Dialisis Setia (Ipoh), HD Unit	>=80%
Pusat Dialisis NKF-Yayasan Sultanah Bahiyah, HD Unit	>=80%	Pusat Dialisis Setia (Sitiawan), HD Unit	>=80%
Pusat Dialisis NuCare Dialysis Centre Sdn. Bhd. (Cawangan Nibong Tebal), HD Unit	>=80%	Pusat Dialisis Sijangkang, HD Unit	>=80%
Pusat Dialisis Nur Kasih (Kamunting), HD Unit	>=80%	Pusat Dialisis Sinar Amal - PDSA Cawangan Kampar, HD Unit	>=80%
Pusat Dialisis Nur Kasih (Parit Buntar), HD Unit	>=80%	Pusat Dialisis Subang, HD Unit	>=80%
Pusat Dialisis Nur Kasih (Seremban), HD Unit	>=80%	Pusat Dialisis Tabung Rawatan Pesakit Buah Pinggang Seberang Perai, HD Unit	>=80%
Pusat Dialisis Nur Kasih (Taiping), HD Unit	>=80%	Pusat Dialisis Taiping (Cawangan Kamunting), HD Unit	>=80%
Pusat Dialisis Nur Kasih Sdn Bhd (Cawangan Tanjung Rambutan), HD Unit	NIL	Pusat Dialisis Taiping (Parit Buntar), HD Unit	>=80%
Pusat Dialisis Nurraeen, HD Unit	>=80%	Pusat Dialisis Taiping Cawangan Kuala Kangsar, HD Unit	>=80%
Pusat Dialisis Orion Consortium, HD Unit	>=80%	Pusat Dialisis Taiping, HD Unit	>=80%

PARTICIPATING HAEMODIALYSIS CENTRES

2021 (cont.)

Haemodialysis Centres	AR	Haemodialysis Centres	AR
Pusat Dialisis Tanjung Malim, HD Unit	>=80%	Pusat Haemodialisis Zakat Kedah, HD Unit	>=80%
Pusat Dialisis Terengganu/NKF, HD Unit	>=80%	Pusat Haemodialisis Amal Lexin, HD Unit	>=80%
Pusat Dialisis Touch, HD Unit	>=80%	Pusat Hemodialisis 1 Malaysia Maras, HD Unit	>=80%
Pusat Dialisis Veteran ATM (Senawang), HD Unit	>=80%	Pusat Hemodialisis 1KOPDBKL Sdn Bhd, HD Unit	>=80%
Pusat Dialisis Waqaf An Nur Masjid Taman Bukit Tiram, HD Unit	>=80%	Pusat Hemodialisis Afiat Care, HD Unit	>=80%
Pusat Dialisis Waqaf An-Nur Galleria @ Kotaraya, HD Unit	>=80%	Pusat Hemodialisis Al Husna, HD Unit	>=80%
Pusat Dialisis Yayasan PHIM, HD Unit	>=80%	Pusat Hemodialisis Alfaisal, HD Unit	>=80%
Pusat Dialisis Yayasan Veteran ATM (Bukit Sentosa), HD Unit	>=80%	Pusat Hemodialisis Anjung Dialysis Centre, HD Unit	NIL
Pusat Dialisis Yayasan Veteran ATM (Sunway Batu Caves), HD Unit	>=80%	Pusat Hemodialisis Ar-Raudhah, HD Unit	>=80%
Pusat Dialisis Zara, HD Unit	>=80%	Pusat Hemodialisis Arrraudhah (Gambir), HD Unit	>=80%
Pusat Dialisis Azalea, HD Unit	>=80%	Pusat Hemodialisis As-Salam, HD Unit	>=80%
Pusat Dialisis Bandar Parkland, HD Unit	>=80%	Pusat Hemodialisis Bayan Baru, HD Unit	>=80%
Pusat Dialisis Comfort, HD Unit	>=80%	Pusat Hemodialisis Beng Siew, HD Unit	>=80%
Pusat Dialisis Davita Sabak Bernam, HD Unit	>=80%	Pusat Hemodialisis Berkat Seroja Machang, HD Unit	>=80%
Pusat Dialisis Makmur (Senai), HD Unit	>=80%	Pusat Hemodialisis Bestari Jaya, HD Unit	>=80%
Pusat Dialisis Mesra (Rahman Putra), HD Unit	>=80%	Pusat Hemodialisis Bestari Kampar, HD Unit	>=80%
Pusat Dialisis Mesra Kapar, HD Unit	>=80%	Pusat Hemodialisis Cemerlang, HD Unit	>=80%
Pusat Dialisis Nur Kasih (Cawangan Klang), HD Unit	>=80%	Pusat Hemodialisis Darul Iltizam (Ipoh), HD Unit	>=80%
Pusat Dialisis Nur Kasih (Kuala Kangsar), HD Unit	>=80%	Pusat Hemodialisis Darul Iltizam (Tapah), HD Unit	>=80%
Pusat Dialisis Remedic, HD Unit	>=80%	Pusat Hemodialisis Darul Ta'zim (Batu Pahat), HD Unit	>=80%
Pusat Dialisis Sri Manja, HD Unit	>=80%	Pusat Hemodialisis Darul Ta'zim (Parit Raja), HD Unit	>=80%
Pusat Dialisis Tuanku Syed Putra-NKF, HD Unit	>=80%	Pusat Hemodialisis Darul Ta'zim (Parit Yaani), HD Unit	>=80%
Pusat Dialisis UMS-YKN, HD Unit	>=80%	Pusat Hemodialisis Desa Aman Puri, HD Unit	>=80%
Pusat Dialisis YKN Pantai Dalam, HD Unit	>=80%	Pusat Hemodialisis Dr Azhar (Jitra), HD Unit	<80%
Pusat Haemodialisis Algazel, HD Unit	>=80%	Pusat Hemodialisis Dr Azhar (Kulim 2), HD Unit	>=80%
Pusat Haemodialisis Bacang Melaka, HD Unit	>=80%	Pusat Hemodialisis Dr Azhar (Kulim Lembah Impiana), HD Unit	>=80%
Pusat Haemodialisis Dr Ismail (Cawangan Guar Chempedak), HD Unit	>=80%	Pusat Hemodialisis Fasa (Kg Medan), HD Unit	>=80%
Pusat Haemodialisis Dr. Ismail, HD Unit	>=80%	Pusat Hemodialisis Fasa (Sri Manja), HD Unit	>=80%
Pusat Haemodialisis Rotary, Batu Pahat, HD Unit	>=80%	Pusat Hemodialisis Felda, HD Unit	>=80%
Pusat Haemodialisis RTC Terengganu, HD Unit	>=80%	Pusat Hemodialisis Gemencheh, HD Unit	>=80%
Pusat Haemodialisis Suria (Tampin), HD Unit	>=80%	Pusat Hemodialisis Harmoni (Shamelin), HD Unit	>=80%
Pusat Haemodialisis Suria (Tangkak), HD Unit	>=80%	Pusat Hemodialisis Harmoni Hemodialisis (Cawangan Nilai), HD Unit	NIL
Pusat Haemodialisis Well Care, HD Unit	<80%	Pusat Hemodialisis Harmoni, HD Unit	>=80%
Pusat Haemodialisis Zakat (Bayan Lepas), HD Unit	>=80%	Pusat Hemodialisis Hidayah, HD Unit	>=80%
Pusat Haemodialisis Zakat (Nibong Tebal), HD Unit	>=80%	Pusat Hemodialisis Impian Kluang, HD Unit	>=80%

PARTICIPATING HAEMODIALYSIS CENTRES

2021 (cont.)

Haemodialysis Centres	AR	Haemodialysis Centres	AR
Pusat Hemodialisis Impian, HD Unit	>=80%	Pusat Hemodialisis Qaseh, HD Unit	>=80%
Pusat Hemodialisis Kau Ong Yah Ampang, HD Unit	>=80%	Pusat Hemodialisis Rahimra, HD Unit	>=80%
Pusat Hemodialisis Komuniti Cheng, HD Unit	>=80%	Pusat Hemodialisis Seberang Takir, HD Unit	>=80%
Pusat Hemodialisis KOPPES, HD Unit	>=80%	Pusat Hemodialisis Sejahtera (Batu Pahat), HD Unit	>=80%
Pusat Hemodialisis Krisda Jaya (Tanjung Minyak), HD Unit	>=80%	Pusat Hemodialisis Sejahtera (Parit Jawa), HD Unit	>=80%
Pusat Hemodialisis Krisda Jaya, HD Unit	>=80%	Pusat Hemodialisis Sejahtera Muar, HD Unit	>=80%
Pusat Hemodialisis MAIJ, HD Unit	<80%	Pusat Hemodialisis Senawang, HD Unit	>=80%
Pusat Hemodialisis MAIWP-PICOMS (Batu Muda), HD Unit	>=80%	Pusat Hemodialisis Seroja (Baling), HD Unit	>=80%
Pusat Hemodialisis MAIWP-PICOMS (Cheras), HD Unit	>=80%	Pusat Hemodialisis Seroja (Kulim 1), HD Unit	>=80%
Pusat Hemodialisis MAIWP-PICOMS (Jln Pahang), HD Unit	>=80%	Pusat Hemodialisis Seroja (Kulim 2), HD Unit	>=80%
Pusat Hemodialisis Majlis Agama Islam Negeri Johor, HD Unit	>=80%	Pusat Hemodialisis Shah Alam, HD Unit	<80%
Pusat Hemodialisis Manjung, HD Unit	>=80%	Pusat Hemodialisis Sinar (Jementah), HD Unit	>=80%
Pusat Hemodialisis Mawar Cawangan Pending Sarawak, HD Unit	>=80%	Pusat Hemodialisis Sinar Haemodialysis Sdn Bhd (Cawangan Tampin), HD Unit	>=80%
Pusat Hemodialisis Mawar N. Sembilan (Seremban), HD Unit	>=80%	Pusat Hemodialisis Sinar Haemodialysis Sdn Bhd, HD Unit	>=80%
Pusat Hemodialisis Medipro Alliance, HD Unit	>=80%	Pusat Hemodialisis Sinar Haemodialysis, HD Unit	>=80%
Pusat Hemodialisis Mergong, HD Unit	>=80%	Pusat Hemodialisis Sinona, HD Unit	>=80%
Pusat Hemodialisis Mesra, HD Unit	>=80%	Pusat Hemodialisis SJAM Pulau Sebang, HD Unit	>=80%
Pusat Hemodialisis Myangkasa, HD Unit	>=80%	Pusat Hemodialisis Sri Tanjung, HD Unit	>=80%
Pusat Hemodialisis Nabilah, HD Unit	>=80%	Pusat Hemodialisis Suria (Bera), HD Unit	>=80%
Pusat Hemodialisis NBOS Telaga Mengkudu, HD Unit	>=80%	Pusat Hemodialisis Suria (Jengka), HD Unit	>=80%
Pusat Hemodialisis Nefrol I-Care, HD Unit	>=80%	Pusat Hemodialisis Suria (Jerantut), HD Unit	>=80%
Pusat Hemodialisis Nilam (Semenyih), HD Unit	>=80%	Pusat Hemodialisis Suria (Karak), HD Unit	>=80%
Pusat Hemodialisis Nour, HD Unit	>=80%	Pusat Hemodialisis Suria (Muar), HD Unit	>=80%
Pusat Hemodialisis Nur'ain, HD Unit	>=80%	Pusat Hemodialisis Syifa (Batangkali), HD Unit	>=80%
Pusat Hemodialisis Paduka (Bachok), HD Unit	>=80%	Pusat Hemodialisis Syifa (Bukit Beruntung), HD Unit	>=80%
Pusat Hemodialisis Paduka (Pasir Puteh), HD Unit	>=80%	Pusat Hemodialisis Syifa (Bukit Gambir), HD Unit	>=80%
Pusat Hemodialisis Paduka (Tumpat), HD Unit	>=80%	Pusat Hemodialisis Syifa (Pendang), HD Unit	>=80%
Pusat Hemodialisis Paduka, HD Unit	>=80%	Pusat Hemodialisis UniSZA, HD Unit	>=80%
Pusat Hemodialisis Perkis, HD Unit	>=80%	Pusat Hemodialisis USIM-MAINS, HD Unit	>=80%
Pusat Hemodialisis Permata, HD Unit	>=80%	Pusat Hemodialisis Wakaf, Wakaf Perak Ar-Ridzuan (WPAR), HD Unit	>=80%
Pusat Hemodialisis Persatuan Kebajikan Pusat Chee Beng Chan Banting, HD Unit	>=80%	Pusat Hemodialisis Waqaf An-nur Bandar Baru Sultan Suleiman, HD Unit	>=80%
Pusat Hemodialisis Pertubuhan Wanita Prihatin Kuala Krai, HD Unit	NIL	Pusat Hemodialisis Waz Lian, HD Unit	>=80%
Pusat Hemodialisis PMKL, HD Unit	>=80%	Pusat Hemodialisis Yayasan Al-Sultan Abdullah (YASA) Pekan, HD Unit	>=80%
Pusat Hemodialisis Prihatin Tengku Besar Terengganu, HD Unit	>=80%	Pusat Hemodialisis Yayasan Al-Sultan Abdullah (YASA) Setiawangsa, HD Unit	>=80%
Pusat Hemodialisis Qaseh (Selama), HD Unit	>=80%	Pusat Hemodialisis Yayasan Al-Sultan Abdullah (YASA), HD Unit	>=80%

PARTICIPATING HAEMODIALYSIS CENTRES

2021 (cont.)

Haemodialysis Centres	AR	Haemodialysis Centres	AR
Pusat Hemodialisis Yayasan Toh Puan Zurina, HD Unit	>=80%	Pusat Rawatan Dialisis CDC Caring Dialysis, HD Unit	>=80%
Pusat Hemodialisis Zakat (Balik Pulau), HD Unit	>=80%	Pusat Rawatan Dialisis Farah Mahami, HD Unit	>=80%
Pusat Hemodialisis Zakat (Bukit Mertajam), HD Unit	>=80%	Pusat Rawatan Dialisis Fazwinna, HD Unit	>=80%
Pusat Hemodialisis Zakat (Butterworth), HD Unit	>=80%	Pusat Rawatan Dialisis Fitra (Cawangan Muadzam Shah), HD Unit	>=80%
Pusat Hemodialisis Zakat (Kepala Batas), HD Unit	>=80%	Pusat Rawatan Dialisis Fitra (Kuantan), HD Unit	>=80%
Pusat Hemodialisis Zakat Georgetown, HD Unit	>=80%	Pusat Rawatan Dialisis Fitra (Maran), HD Unit	>=80%
Pusat Hemodialisis Bestari (Kepala Batas), HD Unit	>=80%	Pusat Rawatan Dialisis Fitra (Seri Perdana), HD Unit	>=80%
Pusat Hemodialisis Bestari Seri Iskandar, HD Unit	>=80%	Pusat Rawatan Dialisis Fitra Pekan, HD Unit	>=80%
Pusat Hemodialisis Harmoni (Kota Damansara), HD Unit	>=80%	Pusat Rawatan Dialisis Fungates Superflow-NKF, HD Unit	>=80%
Pusat Hemodialisis Harmoni (Sungai Long), HD Unit	>=80%	Pusat Rawatan Dialisis Good Health-NKF (Kg Pandan), HD Unit	>=80%
Pusat Hemodialisis Rotary Kulai, HD Unit	>=80%	Pusat Rawatan Dialisis Hidayah, HD Unit	>=80%
Pusat Hemodialisis Suria (Bentong), HD Unit	>=80%	Pusat Rawatan Dialisis Islah (Batu Caves), HD Unit	>=80%
Pusat Hemodialisis Suria (Temerloh), HD Unit	>=80%	Pusat Rawatan Dialisis Islah (Bukit Mertajam), HD Unit	>=80%
Pusat Hemodialisis Suria Kuantan, HD Unit	>=80%	Pusat Rawatan Dialisis Islah (Gong Badak), HD Unit	>=80%
Pusat Hemodialisis Suria Melaka, HD Unit	>=80%	Pusat Rawatan Dialisis Islah (Jerteh), HD Unit	>=80%
Pusat Jantung Hospital Umum Sarawak, HD Unit	>=80%	Pusat Rawatan Dialisis Islah (KL), HD Unit	>=80%
Pusat Kesihatan Universiti (UTHO), HD Unit	<80%	Pusat Rawatan Dialisis Islah (Kuala Berang), HD Unit	>=80%
Pusat Pakar Dialysis Traktif, HD Unit	>=80%	Pusat Rawatan Dialisis Islah (Kuala Krai), HD Unit	>=80%
Pusat Perbadanan Islam Segamat, HD Unit	>=80%	Pusat Rawatan Dialisis Islah (Kuala Terengganu), HD Unit	>=80%
Pusat Perkhidmatan Haemodialisis USIM, HD Unit	>=80%	Pusat Rawatan Dialisis Islah (Kulim), HD Unit	>=80%
Pusat Perubatan Ar-Ridzuan, HD Unit	>=80%	Pusat Rawatan Dialisis Islah (Pasir Puteh), HD Unit	>=80%
Pusat Perubatan Dialisis (Bangi), HD Unit	>=80%	Pusat Rawatan Dialisis Islah (Prima Sri Gombak), HD Unit	>=80%
Pusat Perubatan Dialisis (Dengkil), HD Unit	>=80%	Pusat Rawatan Dialisis Islah (Selayang), HD Unit	>=80%
Pusat Perubatan Dialisis Semenyih, HD Unit	>=80%	Pusat Rawatan Dialisis Islah (Setiu), HD Unit	>=80%
Pusat Perubatan Pakar Sri Kota, HD Unit	>=80%	Pusat Rawatan Dialisis MUIS-NKF, HD Unit	>=80%
Pusat Perubatan Sunway Velocity, HD Unit	>=80%	Pusat Rawatan Dialisis MyKidney Dialysis Centre Rasah, HD Unit	NIL
Pusat Perubatan Universiti Kebangsaan Malaysia, HD Unit	>=80%	Pusat Rawatan Dialisis NKF-Tun Abdul Razak (Kuantan), HD Unit	>=80%
Pusat Perubatan Universiti Teknologi Mara, HD Unit	>=80%	Pusat Rawatan Dialisis Perdana, HD Unit	>=80%
Pusat Rawatan Dialisis Afiat, HD Unit	>=80%	Pusat Rawatan Dialisis Pusat Dialisis Amal JB Lions Charity Dialysis Centre MAAEDICARE (1), HD Unit	>=80%
Pusat Rawatan Dialisis Al Farabi, HD Unit	>=80%	Pusat Rawatan Dialisis Pusat Dialisis Amal JB Lions Charity Dialysis Centre MAAEDICARE (2), HD Unit	>=80%
Pusat Rawatan Dialisis Al-Kindi, HD Unit	<80%	Pusat Rawatan Dialisis Pusat Dialisis Amal MAAEDICARE (Cheras), HD Unit	>=80%
Pusat Rawatan Dialisis Avisena Dialysis Centre Seri Kembangan, HD Unit	>=80%	Pusat Rawatan Dialisis Pusat Dialisis Amal MAAEDICARE (KL), HD Unit	>=80%
Pusat Rawatan Dialisis AZ Yusra Dialysis Sdn Bhd, HD Unit	NIL	Pusat Rawatan Dialisis Pusat Dialisis Amal MAAEDICARE (Mentakab), HD Unit	>=80%
Pusat Rawatan Dialisis Caring (Sg. Siput), HD Unit	>=80%	Pusat Rawatan Dialisis Pusat Dialisis Amal Maaedicare Seberang Perai, HD Unit	>=80%
Pusat Rawatan Dialisis CDC Caring Dialysis (Gurun), HD Unit	>=80%	Pusat Rawatan Dialisis Puteri Zulaikha, HD Unit	>=80%

PARTICIPATING HAEMODIALYSIS CENTRES

2021 (cont.)

Haemodialysis Centres	AR	Haemodialysis Centres	AR
Pusat Rawatan Dialisis Seremban Dahlia Dialysis Centre, HD Unit	>=80%	Renal Therapy Services, HD Unit	>=80%
Pusat Rawatan Haemodialisis Wan Nong, HD Unit	>=80%	Renal-Link (Kelantan), HD Unit	>=80%
Pusat Rawatan Haemodialysis Pernama Haemodialysis, HD Unit	>=80%	RenalTeam Dialysis Centre (Ara Damansara), HD Unit	>=80%
Pusat Rawatan Hemodialisis Darul Iltizam (Slim River), HD Unit	>=80%	RenalTeam Dialysis Centre (Keningau), HD Unit	>=80%
Pusat Rawatan Hemodialisis Dkasih Hemodialisis Sdn Bhd, HD Unit	>=80%	RenalTeam Dialysis Centre (Port Dickson), HD Unit	>=80%
Pusat Rawatan Hemodialisis Tunku Sarina, HD Unit	>=80%	Rompin Hospital, HD Unit	>=80%
Pusat Rawatan Hemodialisis Felina, HD Unit	>=80%	Rotary Club of Johor Bahru Haemodialysis Centre, HD Unit	>=80%
Pusat Rawatan Perbadanan Islam (Kota Tinggi), HD Unit	>=80%	Rotary Club of Kota Tinggi (2019)-Hemodialisis Centre, HD Unit	>=80%
Pusat Waqaf An-nur (Senawang), HD Unit	>=80%	S.P. Menon Dialysis Centre (Klang), HD Unit	<80%
Putera Bistari Dialysis Centre, HD Unit	>=80%	Sai Ananda Haemodialysis Centre, HD Unit	>=80%
Putra Medical Centre, HD Unit	>=80%	Saratok Hospital, HD Unit	>=80%
Putra Specialist Hospital (Melaka), HD Unit	>=80%	Sarawak General Hospital, HD Unit	>=80%
Putrajaya Hospital, HD Unit	>=80%	Sarikei Hospital, HD Unit	>=80%
PWRM (BM) Dialysis Centre, HD Unit	>=80%	Seberang Jaya Hospital, HD Unit	>=80%
Quality Dialysis Care (Jerantut), HD Unit	<80%	Segamat Hospital, HD Unit	>=80%
Quality Dialysis Care (Kangar), HD Unit	>=80%	Selama Hospital, HD Unit	>=80%
Quality Dialysis Care (Klang), HD Unit	>=80%	Selayang Hospital (Paed), HD Unit	>=80%
Quality Dialysis Care (Sg. Petani Selatan), HD Unit	>=80%	Selayang Hospital, HD Unit	>=80%
Queen Elizabeth Hospital, HD Unit	>=80%	Semporna Hospital, HD Unit	>=80%
Raja Perempuan Zainab II Hospital, HD Unit	>=80%	Serdang Hospital, HD Unit	>=80%
Raja Permaisuri Bainun Hospital, HD Unit	>=80%	Seri Benut Dialysis, HD Unit	>=80%
Ranau Hospital, HD Unit	>=80%	Seri Manjung Hospital, HD Unit	>=80%
Raub Dialysis Centre Sdn Bhd, HD Unit	>=80%	Seri Mutiara Dialysis Centre Sdn Bhd, HD Unit	>=80%
Raub Hospital, HD Unit	>=80%	Serian Dialysis Centre, HD Unit	>=80%
Rawatan Dialisis Bukit Tinggi, HD Unit	>=80%	Serian Hospital, HD Unit	>=80%
Regency Specialist Hospital, HD Unit	>=80%	Setiu Hospital, HD Unit	>=80%
Rejang Medical Centre, HD Unit	>=80%	Sg Siput Hospital, HD Unit	>=80%
Rembau Hospital, HD Unit	>=80%	Shah Alam Hospital, HD Unit	>=80%
Renal Associates, HD Unit	>=80%	Sibu Hospital, HD Unit	>=80%
Renal Care (Ipoh Specialist), HD Unit	>=80%	Sibu Kidney Foundation, HD Unit	>=80%
Renal Care (Kedah), HD Unit	>=80%	Sik Hospital, HD Unit	>=80%
Renal Care Dialysis Services, HD Unit	<80%	Sime Darby Medical Centre Parkcity, HD Unit	>=80%
Renal Dialysis Centre, HD Unit	>=80%	Sime Darby Medical Centre Subang Jaya, HD Unit	>=80%
Renal Life Dialysis Centre, HD Unit	>=80%	Simunjan Hospital, HD Unit	>=80%
Renal Link (Penang), HD Unit	>=80%	Sinar Haemodialysis (Batu Pahat) Sdn Bhd, HD Unit	>=80%

PARTICIPATING HAEMODIALYSIS CENTRES

2021 (cont.)

Haemodialysis Centres	AR	Haemodialysis Centres	AR
Sinar Haemodialysis (Cawangan Batu Pahat), HD Unit	>=80%	Sungai Buloh Hospital, HD Unit	>=80%
Sinar Haemodialysis Sdn Bhd (Jasin, Melaka), HD Unit	>=80%	Sunway Medical Centre (2), HD Unit	>=80%
Sipitang Hospital, HD Unit	>=80%	Sunway Medical Centre (3), HD Unit	>=80%
SJ Dialysis Centre (Ipoh), HD Unit	>=80%	Sunway Medical Centre (4), HD Unit	>=80%
SJ Dialysis Centre (Seberang Jaya), HD Unit	>=80%	Sunway Medical Centre Sdn Bhd (5), HD Unit	>=80%
SJ Dialysis Centre (Sg Bakap), HD Unit	>=80%	Superkids Trinity-NKF Dialysis Centre, HD Unit	>=80%
SJ Hemodialysis Sdn Bhd (Cawangan Bidor), HD Unit	>=80%	Suriya Dialysis Centre, HD Unit	<80%
SJ Hemodialysis Sdn Bhd (Cawangan Sungkai), HD Unit	>=80%	Syukur Dialysis (Puchong), HD Unit	>=80%
SJAMK Hemodialysis, HD Unit	>=80%	Syukur Haemodialysis (Bakri), HD Unit	>=80%
SJAM-KPS Haemodialysis Centre 1 (Raja Muda Musa), HD Unit	>=80%	Syukur Haemodialysis (Batu Pahat), HD Unit	>=80%
SJAM-KPS Haemodialysis Centre 11 (Shah Alam), HD Unit	<80%	Taiping Hospital, HD Unit	>=80%
SJAM-KPS Haemodialysis Centre 3 (Banting), HD Unit	>=80%	Taiping Medical Centre, HD Unit	>=80%
SJAM-KPS Haemodialysis Centre 5 (Rawang), HD Unit	>=80%	Tambunan Hospital, HD Unit	>=80%
SJAM-KPS Haemodialysis Centre 6 (Kuala Selangor), HD Unit	>=80%	Tampin Hospital, HD Unit	>=80%
SJAM-KPS Haemodialysis Centre 8 (Sibu), HD Unit	>=80%	Tan Sri Muhyiddin Charity Dialysis Centre, HD Unit	>=80%
SJAM-KPS Hemodialysis Kampar (Station 4), HD Unit	>=80%	Tanah Merah Hospital, HD Unit	>=80%
SJAM-KPS Pusat Hemodialysis Centre 10 (Bintulu), HD Unit	>=80%	Tangkak Hospital, HD Unit	>=80%
SJAM-KPS Pusat Hemodialysis Centre 15 (Ipoh), HD Unit	>=80%	Tangkak Lions Renal Centre, HD Unit	>=80%
SJAM-KPS Pusat Hemodialysis Klang (Station 2), HD Unit	>=80%	Tanjung Karang Hospital, HD Unit	>=80%
SJAM-KPS Pusat Hemodialysis Serdang Raya (Station14), HD Unit	>=80%	Tapah Hospital, HD Unit	>=80%
SJAM-KPS Pusat Hemodialysis Tasik Puteri (Station 13), HD Unit	>=80%	Tawau Hospital, HD Unit	>=80%
Slim River Hospital (Tanjong Malim), HD Unit	>=80%	Tawau Specialist Medical Centre, HD Unit	>=80%
Smart Hemodialysis, HD Unit	>=80%	Teluk Intan Hospital, HD Unit	>=80%
Smartcare Dialysis Centre (Subang Jaya), HD Unit	>=80%	Temenggong Seri Maharaja Tun Ibrahim Hospital, HD Unit	>=80%
Smartcare Dialysis Clinic (Cheras), HD Unit	>=80%	Tenang Haemodialysis Centre, HD Unit	>=80%
Sri Aman Hospital, HD Unit	>=80%	Tenang Haemodialysis Jasin, HD Unit	>=80%
Subang Dialysis Centre, HD Unit	>=80%	Tengku Ampuan Afzan Hospital (Paed), HD Unit	>=80%
Sultan Abdul Halim Hospital, HD Unit	>=80%	Tengku Ampuan Afzan Hospital, HD Unit	>=80%
Sultan Haji Ahmad Shah Hospital, HD Unit	>=80%	Tengku Ampuan Jemaah Hospital, HD Unit	>=80%
Sultan Ismail Hospital (Paed), HD Unit	>=80%	Tengku Ampuan Rahimah Hospital, HD Unit	>=80%
Sultan Ismail Hospital, HD Unit	>=80%	Tengku Anis Hospital, HD Unit	>=80%
Sultanah Aminah Hospital, HD Unit	>=80%	Tenom Hospital, HD Unit	>=80%
Sultanah Bahiyah Hospital, HD Unit	>=80%	The Kidney Dialysis Centre, HD unit	>=80%
Sultanah Nur Zahirah Hospital, HD Unit	>=80%	The Nayang-NKF Dialysis Centre, HD Unit	<80%
Sungai Bakap Hospital, HD Unit	>=80%	The Penang Community HD Society, HD Unit	>=80%

PARTICIPATING HAEMODIALYSIS CENTRES

2021 (cont.)

Haemodialysis Centres	AR	Haemodialysis Centres	AR
Thomson Hospital Kota Damansara, HD Unit	>=80%	Universiti Sains Malaysia Hospital, HD Unit	>=80%
Timberland Medical Centre, HD Unit	>=80%	University Malaya Medical Centre, HD Unit	>=80%
Total Kidney Care Haemodialysis, HD Unit	>=80%	University Malaya Specialist Centre, HD Unit	>=80%
Tuanku Ampuan Najihah Hospital, HD Unit	>=80%	Woh Peng Cheang Seah, HD Unit	>=80%
Tuanku Fauziah Hospital, HD Unit	>=80%	Yakin Jaya Haemodialysis, HD Unit	>=80%
Tuanku Ja'afar Hospital (Paed), HD Unit	>=80%	Yan Hospital, HD Unit	>=80%
Tuanku Ja'afar Hospital, HD Unit	>=80%	Yayasan Kebajikan SSL Puchong, HD Unit	>=80%
Tuaran Hospital, HD Unit	>=80%	Yayasan Kebajikan SSL, HD Unit	>=80%
Tumpat Hospital, HD Unit	>=80%	Yayasan Rotary Kluang, HD Unit	>=80%
Tung Shin Hospital, HD Unit	>=80%	YKN Dialisis (Kota Bharu), HD Unit	>=80%
Unit Dialisis Komuniti Chiku 3, HD Unit	>=80%	YKN Dialisis (Kuala Pilah), HD Unit	>=80%
Unit Hemodialisis Hospital UiTM (Bandar Puncak Alam), HD Unit	>=80%	YKN Dialisis Kuala Terengganu, HD Unit	>=80%
Unit Hemodialisis Komuniti Koding, HD Unit	>=80%	YKN Dialisis Rompin, HD Unit	>=80%
Unit Hemodialisis Lenggong, HD Unit	>=80%	Zaharah Dialisis Center (Jitra), HD Unit	>=80%
Unit Hemodialisis Pantai Remis, HD Unit	>=80%	Zaharah Dialisis Centre (Pokok Sena), HD Unit	>=80%
Unit Hemodialisis Sungai Koyan, HD Unit	>=80%	Zaharah Dialysis Center (Kangar), HD Unit	>=80%
Unit Hemodialisis UiTM Kampus Selayang, HD Unit	>=80%	Zhi En Dialysis Centre, HD Unit	>=80%
Universiti Kebangsaan Malaysia Bangi, HD Unit	>=80%		

PARTICIPATING PERITONEAL DIALYSIS CENTRES 2021

Peritoneal Dialysis Centres	AR	Peritoneal Dialysis Centres	AR
96 Hospital Angkatan Tentera (Lumut), CAPD Unit	>=80%	Raja Perempuan Zainab II Hospital, CAPD Unit	>=80%
Ampang Hospital, CAPD Unit	>=80%	Raja Permaisuri Bainun Hospital, CAPD Unit	>=80%
Assunta Hospital, CAPD Unit	>=80%	Renal Dialysis Centre, CAPD Unit	>=80%
Bentong Hospital, CAPD Unit	>=80%	Sarawak General Hospital, CAPD Unit	>=80%
Besut Hospital, CAPD Unit	>=80%	Seberang Jaya Hospital, CAPD Unit	>=80%
Duchess of Kent Hospital, CAPD Unit	>=80%	Selayang Hospital (Paed), CAPD Unit	>=80%
Dungun Hospital, CAPD Unit	>=80%	Selayang Hospital, CAPD Unit	>=80%
Hospital Pakar Sultanah Fatimah (Muar), CAPD Unit	>=80%	Serdang Hospital, CAPD Unit	>=80%
Hospital Sultanah Nora Ismail, CAPD Unit	>=80%	Setiu Hospital, CAPD Unit	>=80%
Hospital Tunku Azizah, Kuala Lumpur (Paed), CAPD Unit	>=80%	Sri Kota Medical Centre, CAPD Unit	>=80%
Hospital Wanita Dan Kanak-kanak Sabah (Paed), CAPD Unit	>=80%	Sultan Abdul Halim Hospital, CAPD Unit	>=80%
Hulu Terengganu Hospital, CAPD Unit	>=80%	Sultan Haji Ahmad Shah Hospital, CAPD Unit	>=80%
Kajang Hospital, CAPD Unit	>=80%	Sultan Ismail Hospital (Paed), CAPD Unit	>=80%
Kemaman Hospital, CAPD Unit	>=80%	Sultanah Aminah Hospital, CAPD Unit	>=80%
Kuala Lumpur Hospital, CAPD Unit	>=80%	Sultanah Bahiyah Hospital, CAPD Unit	>=80%
Kulim Hospital, CAPD Unit	>=80%	Sultanah Nur Zahirah Hospital, CAPD Unit	>=80%
Melaka Hospital, CAPD Unit	>=80%	Taiping Hospital, CAPD Unit	>=80%
Miri Hospital, CAPD Unit	>=80%	Tawau Hospital, CAPD Unit	>=80%
Pantai Hospital Batu Pahat, CAPD Unit	>=80%	Teluk Intan Hospital, CAPD Unit	>=80%
Pasir Mas Hospital, CAPD Unit	>=80%	Tengku Ampuan Afzan Hospital (Paed), CAPD Unit	>=80%
Prince Court Medical Centre, CAPD Unit	>=80%	Tengku Ampuan Afzan Hospital, CAPD Unit	>=80%
Pulau Pinang Hospital (Paed), CAPD Unit	>=80%	Tengku Ampuan Rahimah Hospital, CAPD Unit	>=80%
Pulau Pinang Hospital, CAPD Unit	>=80%	Tuanku Ja'afar Hospital (Paed), CAPD Unit	>=80%
Pusat Perubatan Universiti Kebangsaan Malaysia, CAPD Unit	>=80%	Tuanku Ja'afar Hospital, CAPD Unit	>=80%
Pusat Perubatan Universiti Teknologi Mara, CAPD Unit	>=80%	Unit Peritoneal Dialisis Hospital UiTM (Bandar Puncak Alam), CAPD Unit	NIL
Puteri Specialist Hospital, CAPD Unit	>=80%	Universiti Sains Malaysia Hospital, CAPD Unit	>=80%
Putrajaya Hospital, CAPD Unit	>=80%	University Malaya Medical Centre, CAPD Unit	>=80%
Queen Elizabeth Hospital, CAPD Unit	>=80%		

PARTICIPATING RENAL TRANSPLANT FOLLOW-UP CENTRES 2021

Renal Transplant Follow-up Centres	AR	Renal Transplant Follow-up Centres	AR
Assunta Hospital, Tx Unit	>=80%	Raja Perempuan Zainab II Hospital, Tx Unit	>=80%
Bintulu Hospital, Tx Unit	>=80%	Raja Permaisuri Bainun Hospital, Tx Unit	>=80%
Duchess of Kent Hospital, Tx Unit	>=80%	Renal Care (Ipoh Specialist), Tx Unit	>=80%
Fan Medical Renal Clinic, Tx Unit	>=80%	Sarawak General Hospital, Tx Unit	>=80%
Hospital Enche' Besar Hajjah Khalsom, Tx Unit	>=80%	Segamat Hospital, Tx Unit	>=80%
Hospital Sultanah Nora Ismail, Tx Unit	>=80%	Selayang Hospital, Tx Unit	>=80%
Kemaman Hospital, Tx Unit	>=80%	Serdang Hospital, Tx Unit	>=80%
Klinik Dr Choo & Liew, Tx Unit	>=80%	Sibu Hospital, Tx Unit	>=80%
KPJ Ampang Puteri Specialist Hospital, Tx Unit	<80%	Sime Darby Medical Centre Subang Jaya, Tx Unit	<80%
KPJ Sabah Specialist Hospital, Tx Unit	>=80%	Sri Kota Medical Centre, Tx Unit	<80%
Kuala Lumpur Hospital (Paed), Tx Unit	>=80%	Sultan Haji Ahmad Shah Hospital, Tx Unit	>=80%
Kuala Lumpur Hospital, Tx Unit	>=80%	Sultan Ismail Hospital (Paed), Tx Unit	NIL
Kulim Hospital, Tx Unit	>=80%	Sultan Ismail Pandan Hospital, Tx Unit	>=80%
Labuan Hospital, Tx Unit	>=80%	Sultanah Aminah Hospital, Tx Unit	>=80%
Mahkota Medical Centre, Tx Unit	<80%	Sultanah Bahiyah Hospital, Tx Unit	>=80%
Melaka Hospital, Tx Unit	>=80%	Sultanah Nur Zahirah Hospital, Tx Unit	>=80%
Mersing Hospital, Tx Unit	>=80%	Sunway Medical Centre, TX Unit	>=80%
Miri Hospital, Tx Unit	>=80%	Taiping Hospital, Tx Unit	>=80%
Pakar Sultanah Fatimah Muar Hospital, Tx Unit	>=80%	Tan Medical Renal Clinic, Tx Unit	<80%
Pantai Air Keroh Hospital, Tx Unit	NIL	Tawau Hospital, Tx Unit	>=80%
Pontian Hospital, Tx Unit	>=80%	Tengku Ampuan Afzan Hospital, Tx Unit	>=80%
Prince Court Medical Centre, Tx Unit	>=80%	Tengku Ampuan Rahimah Hospital, Tx Unit	>=80%
Pulau Pinang Hospital, Tx Unit	>=80%	Timberland Medical Centre, Tx Unit	NIL
Pusat Perubatan Universiti Kebangsaan Malaysia, Tx Unit	>=80%	Tuanku Ja'afar Hospital, Tx Unit	>=80%
Pusat Perubatan Universiti Teknologi Mara, Tx Unit	<80%	Universiti Sains Malaysia Hospital, Tx Unit	<80%
Queen Elizabeth Hospital, Tx Unit	>=80%	University Malaya Medical Centre, Tx Unit	<80%

CONTRIBUTING AUTHORS

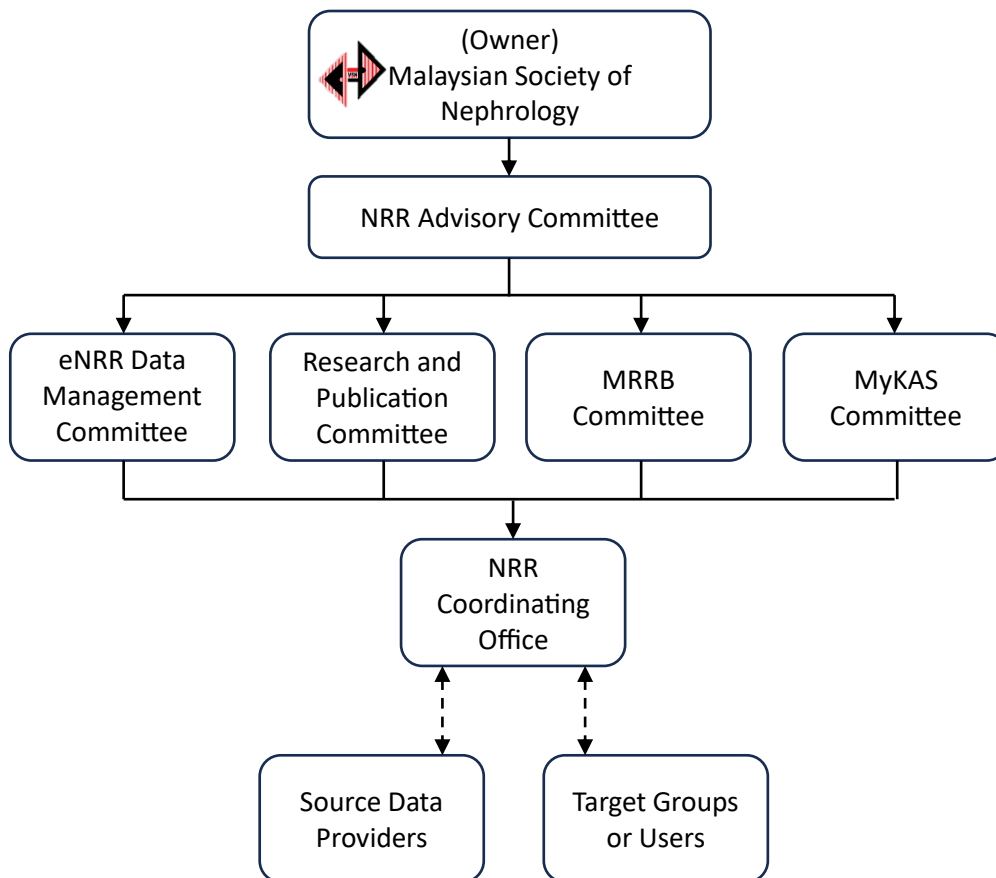
CHAPTER TITLE		AUTHORS	INSTITUTIONS
1	ALL KIDNEY REPLACEMENT THERAPY IN MALAYSIA	Sunita Bavanandan	Kuala Lumpur Hospital
		Hooi Lai Seong	Malaysian Dialysis and Transplant Registry
		Ong Loke Meng	Island Hospital
		Choo Cheh Loo	National Renal Registry
2	DIALYSIS IN MALAYSIA	Ong Loke Meng	Island Hospital
		Sunita Bavanandan	Kuala Lumpur Hospital
		Hooi Lai Seong	Malaysian Dialysis and Transplant Registry
		Choo Cheh Loo	National Renal Registry
3	DEATH AND SURVIVAL ON DIALYSIS	Loh Chek Loong	Raja Permaisuri Bainun Hospital
4	MANAGEMENT OF ANAEMIA IN PATIENTS ON DIALYSIS	Philip N. Jeremiah	Ampang Puteri Specialist Hospital
		Bee Boon Cheak	Selayang Hospital
		Lim Soo Kun	University Malaya Medical Centre
5	HAEMODIALYSIS PRACTICES	Shahnaz Shah Firdaus Khan	Tengku Ampuan Rahimah Hospital
		Leong Chong Men (Bryan)	Sunway Medical Centre, Penang
6	PERITONEAL DIALYSIS	Lily Mushahar	Tuanku Ja'afar Hospital
		Sunita Bavanandan	Kuala Lumpur Hospital
		Anita Bhajan Manocha	Seberang Jaya Hospital
7	RENAL TRANSPLANTATION	Rosnawati Yahya	Kuala Lumpur Hospital
		Ng Kok Peng	University Malaya Medical Centre
		Suryati Binti Yakaob	Selayang Hospital
		Mohd Zaimi Abd Wahab	Kuala Lumpur Hospital
		Yee Seow Yeing	Kuala Lumpur Hospital
		Wong Hin Seng	Sunway Medical Centre, Selangor

FOREWORD

As a result of a number of disruptions including migration to an electronic registry, the retirement of our longstanding manager Staff Nurse Lee Day Guat and the COVID pandemic, we are back after a hiatus of three years, and with a number of changes!

First of all, in October 2022, we had a change of guard with Dr Hooi Lai Seong as the new Chief Editor working closely with Dato Ong Loke Meng. We also have had some changes in the NRR Advisory Committee whose current members are listed on page iv. Mr. Choo Cheh Loo took over as the NRR manager in 2020 while in 2022 we welcomed a new statistician Ms. Jasmine Chew and a new assistant manager, Puan Wan Najdah binti Wan Mohamad Ali.

We have revised the NRR Organisation chart in view of expansion of the work of the registry with new committees, and this was finalised during the 37th NRR Advisory meeting in November 2022, to the structure below:



To ensure timeliness in the availability of data, we have decided against waiting until all chapters are ready before a full report presentation. Instead, each chapter is uploaded to the MSN website once completed. This year we have concentrated on only 7 chapters which were identified as most important. In 2024, we are aiming to have the full complement of chapters.

Data accuracy is extremely important and a major step towards improving this has been the requirement that all Primary renal disease and Cause of death have to be verified by a nephrologist as of January 1st, 2023. In terms of research and participation in international registries, the NRR is continuing to submit data to the US Renal Data System, Global Observatory for Organ Donation and Transplant and PROMISE registry while also actively participating in global studies including the EMPA-Kidney Follow-on and RESOLVE studies.

On behalf of the NRR Advisory Committee, I would like to express my thanks to each and every individual and organisation that has directly or indirectly contributed to the registry. I would like to acknowledge our sponsors (National Kidney Foundation of Malaysia, Duopharma, Kyowa Kirin and Baxter) and all source data providers i.e. the doctors, nurses and paramedics who submit data. Last but not least, thank you to all the NRR Advisory Committee members, Data Management Committee members, Chapter editors and contributors as well as the NRR Staff and Altus.

The NRR is truly a organic registry which can thrive only through the efforts of many.

Dr. Sunita Bavanandan
Chair
Advisory Committee 2022-2024
National Renal Registry

CONTENTS

ACKNOWLEDGEMENT	iii
NATIONAL RENAL REGISTRY ADVISORY COMMITTEE 2022 - 2024	iv
ABOUT THE MALAYSIAN DIALYSIS	v
PARTICIPATING HAEMODIALYSIS CENTRES 2021	viii
PARTICIPATING PERITONEAL DIALYSIS CENTRES 2021	xxi
PARTICIPATING RENAL TRANSPLANT FOLLOW-UP CENTRES 2021	xxii
CONTRIBUTING AUTHORS	xxiii
FOREWORD	xxiv
CONTENTS	xxvi
LIST OF TABLES	xxviii
LIST OF FIGURES	xxxii
EXECUTIVE SUMMARY	xxxvi
APPENDIX I	
DATA MANAGEMENT	I
APPENDIX II	
ANALYSIS SETS, STATISTICAL METHODS AND DEFINITIONS	V
CHAPTER 1 ALL KIDNEY REPLACEMENT THERAPY IN MALAYSIA	
SECTION 1.1: STOCK AND FLOW	2
SECTION 1.2: TREATMENT PROVISION RATE	6
CHAPTER 2 DIALYSIS IN MALAYSIA	
SECTION 2.1: PROVISION OF DIALYSIS IN MALAYSIA	12
2.1.1: Dialysis treatment provision	12
2.1.2: Geographic distribution	13
2.1.3: Gender distribution	13
2.1.4: Age distribution	15
2.1.5: Method and Location of Dialysis	17
2.1.6: Funding for dialysis treatment	18
2.1.7: Distribution of dialysis patients by sector	19
2.1.8: Primary renal disease	21
SECTION 2.2: GROWTH OF DIALYSIS IN MALAYSIA	22
2.2.1: Growth in dialysis in Malaysia by sector	22
2.2.3: Growth in dialysis in Malaysia by region	24
CHAPTER 3 DEATH AND SURVIVAL ON DIALYSIS	
SECTION 3.1: DEATH ON DIALYSIS	30
SECTION 3.2: Patient Survival on Dialysis	32
3.2.1: Patient survival by type of dialysis modality	32
3.2.2: Patient survival by age at starting dialysis	33
3.2.3: Patient survival by diabetic status	34
3.2.4: Patient survival by 5 years era of starting dialysis	35
SECTION 3.3: SURVIVAL OF INCIDENT PATIENTS BY CENTRE	37
3.3.1: Survival of incident haemodialysis patients 2012-2020 by centre	37
3.3.2: Survival of incident PD patients by centre	38
3.4.1: Adjusted hazard ratio for mortality of dialysis patients	39
3.4.2: Adjusted hazard ratio for mortality of haemodialysis patients	42

3.4.3: Adjusted hazard ratio for mortality of peritoneal dialysis patients	44
3.4.4: Risk Adjusted Mortality Rate by haemodialysis centres	46
3.4.5: Risk Adjusted Mortality Rate by PD centres	46
CHAPTER 4 MANAGEMENT OF ANAEMIA	
SECTION 4.1: TREATMENT FOR ANAEMIA IN PATIENTS ON DIALYSIS	48
SECTION 4.2: IRON STATUS ON DIALYSIS	53
SECTION 4.3: HAEMOGLOBIN OUTCOMES ON DIALYSIS	62
CHAPTER 5 HAEMODIALYSIS PRACTICES	
SECTION 5.1: VASCULAR ACCESS AND ITS COMPLICATIONS	68
SECTION 5.2: HD PRESCRIPTION	71
SECTION 5.3: TECHNIQUE SURVIVAL ON DIALYSIS	81
CHAPTER 6 PERITONEAL DIALYSIS	
SECTION 6.1: MODALITIES AND PRESCRIPTION OF PD	88
SECTION 6.2: ACHIEVEMENT OF SOLUTE CLEARANCE AND PERITONEAL TRANSPORT	93
SECTION 6.3: TECHNIQUE SURVIVAL ON PD	96
SECTION 6.4: PERITONITIS	104
CHAPTER 7 RENAL TRANSPLANTATION	
SECTION 7.1: STOCK AND FLOW	110
SECTION 7.2: RECIPIENTS' CHARACTERISTICS	115
SECTION 7.3: TRANSPLANT PRACTICES	117
7.3.1: Type of renal transplantation	117
7.3.2: Biochemical data	118
7.3.3: Immunosuppression medications	120
7.3.4: Non immunosuppression medications	122
SECTION 7.4: TRANSPLANT OUTCOMES	123
7.4.1: Post transplant complications	123
7.4.2: Deaths and graft loss	123
SECTION 7.5: PATIENT AND ALLOGRAFT SURVIVAL	126
7.5.1: Patient survival	126
7.5.2: Allograft survival	126
7.5.3: Patient survival according to type of transplant	128
7.5.4: Allograft survival according to type of transplant	128
7.5.5: Outcome of living donor kidney transplantation	130
7.5.6: Outcome of commercial deceased donor transplantation	131
SECTION 7.6: CARDIOVASCULAR RISK IN RENAL TRANSPLANT RECIPIENTS	133
7.6.1: Risk factors for ischaemic heart disease (IHD)	133
7.6.2: Blood Pressure	135
7.6.3: Blood pressure control	136
7.6.4: Allograft function	137
7.6.5: Body mass index (BMI)	138
7.6.6: LDL cholesterol	139
SECTION 7.7: QOL INDEX SCORE IN RENAL TRANSPLANT RECIPIENTS	141

LIST OF TABLES

Table 1.1.1: Stock and flow of New KRT Incidence, Malaysia 2011-2021	2
Table 1.1.2: Stock and flow of ESKD Patients on KRT at 31st Dec, Malaysia 2011-2021	4
Table 1.2.3: Kidney transplant rate per 1000 dialysis patients, 1969-2021	8
Table 2.1.1: Stock and flow - Dialysis Patients, Malaysia 2011-2021	12
Table 2.1.1(a): Stock and flow - HD Patients, Malaysia 2011-2021	12
Table 2.1.1(b): Stock and flow - PD Patients, Malaysia 2011-2021	12
Table 2.1.2(a): Dialysis Treatment and Rate by Centre state, per million population 2011-2021	13
Table 2.1.3(a): Dialysis Treatment Rate by Gender, per million male or female population 2011-2021	13
Table 2.1.3(b): Gender Distribution of Dialysis Patients 2011-2021	14
Table 2.1.4(a): Dialysis Treatment Rate by Age Group, per million age group population 2011-2021	15
Table 2.1.4(b): Percentage Age Distribution of Dialysis Patients 2011-2021	16
Table 2.1.5: Method and Location of Dialysis Patients 2011-2021	17
Table 2.1.6: Funding for Dialysis Treatment 2011-2021	18
Table 2.1.7: Distribution of Dialysis Patients by Sector 2011-2021	19
Table 2.1.7(a): Distribution of Dialysis Patients by Modality and Sector 2011-2021	20
Table 2.1.8: Primary Renal Diseases for New Dialysis Patients 2011-2021	21
Table 2.2.1: Number and density of Dialysis, HD and PD Centres in Malaysia by State and Sector, Year 2011-2021	22
Table 2.2.2: Number and Prevalence Rate of Dialysis (HD+PD), HD and PD Patients in Malaysia by State and Sector, 2011-2021	23
Table 2.2.3: Distribution of Dialysis Patients by Modality and Region 2011-2021	24
Table 2.2.4: Number and Prevalence Rate of Dialysis Patients (HD & PD) in Malaysia by State and Sector, 2017-2021	25
Table 3.1.1: Deaths on dialysis 2012-2021	30
Table 3.1.2: Causes of death on dialysis 2011-2021	31
Table 3.2.1: Patient survival by dialysis modality [ITT analysis (not censored for change of modality)]	32
Table 3.2.2: Unadjusted patient survival by age	33
Table 3.2.3: Unadjusted patient survival by diabetes mellitus status	34
Table 3.2.4: Unadjusted patient survival by 4 Era, 2002-2021	35
Table 3.4.1: Adjusted hazard ratio for mortality of dialysis patients uncensored for change of modality (2011-2021)	39
Table 3.4.2: Adjusted hazard ratio for mortality of HD patients [ITT analysis] (2001-2021 cohort)	42
Table 3.4.3: Adjusted hazard ratio for mortality of PD patients [ITT analysis] (2001-2021 cohort)	44
Table 4.1.1: Treatment for anaemia, HD patients 2011-2021	48
Table 4.1.2: Treatment for anaemia, PD patients 2011-2021	48
Table 4.1.3: Variation in Erythropoiesis-Stimulating Agents (ESAs) utilization (% patients) among HD centres, 2011-2021	49
Table 4.1.4: Variation in ESAs utilization (% patients) among PD centres, 2011-2021	49
Table 4.1.5: Variation in mean weekly ESAs dose (u/week) among HD centres, 2011-2021	50
Table 4.1.6: Variation in mean weekly ESAs dose (u/week) among PD centres, 2011-2021	51
Table 4.1.7: Variation in use of blood transfusion (% patients) among HD centres, 2011-2021	51
Table 4.1.8: Variation in use of blood transfusion (% patients) among PD centres, 2011-2021	52
Table 4.2.1: Distribution of serum ferritin without ESAs, HD patients 2011-2021	53
Table 4.2.2: Distribution of serum ferritin without ESAs, PD patients 2011-2021	54
Table 4.2.3: Distribution of serum ferritin on ESAs, HD patients 2011-2021	54
Table 4.2.4: Distribution of serum ferritin on ESAs, PD patients 2011-2021	55
Table 4.2.5: Distribution of transferrin saturation without ESAs, HD patients, 2011-2021	55
Table 4.2.6: Distribution of transferrin saturation without ESAs, PD patients, 2011-2021	56

Table 4.2.7: Distribution of transferrin saturation on ESAs, HD patients, 2011-2021	56
Table 4.2.8: Distribution of transferrin saturation on ESAs, PD patients, 2011-2021	57
Table 4.2.9(a): Variation in median serum ferritin among patients on ESAs, HD centres, 2011-2021	58
Table 4.2.9(b): Proportion of patients on ESAs with serum ferritin ≥ 100 ng/ml, HD centres, 2011-2021	58
Table 4.2.9(c): Median transferrin saturation among patients on ESAs, HD centres, 2011-2021	59
Table 4.2.9(d): Proportion of patients on ESAs with transferrin saturation $\geq 20\%$, HD centres, 2011-2021	59
Table 4.2.10(a): Variation in median serum ferritin among patients on ESAs, PD centres, 2011-2021	60
Table 4.2.10(b): Proportion of patients on ESAs with serum ferritin ≥ 100 ng/ml, PD centres, 2011-2021	60
Table 4.2.10(c): Median transferrin saturation among patients on ESAs, PD centres, 2011-2021	61
Table 4.2.10(d): Proportion of patients on ESAs with transferrin saturation $\geq 20\%$, PD centres, 2011-2021	61
Table 4.3.1: Distribution of haemoglobin concentration without ESAs, HD patients 2011-2021	62
Table 4.3.2: Distribution of haemoglobin concentration without ESAs, PD patients 2011-2021	62
Table 4.3.5(a): Variation in median haemoglobin level among patients on ESAs, HD centres 2011-2021	64
Table 4.3.5(b): Proportion of patients on ESAs with haemoglobin level > 10 g/dL, HD centres, 2011-2021	65
Table 4.3.6(a): Variation in median haemoglobin level among patients on ESAs, PD centres, 2011-2021	65
Table 4.3.6(b): Proportion of patients on ESAs with haemoglobin level > 10 g/dL, PD centres, 2011-2021	66
Table 5.1.1: Vascular access on haemodialysis, 2011-2021	68
Table 5.1.2: Difficulties report with vascular access, 2011-2021	69
Table 5.1.3: Complications reported with vascular access, 2011-2021	70
Table 5.2.1: Blood flow rates in HD centers, 2011-2021	71
Table 5.2.2: Number of HD sessions per week, 2011-2021	72
Table 5.2.3: Duration of HD, 2011-2021	72
Table 5.2.4: Dialyser membrane types in HD centres, 2011-2021	73
Table 5.2.5: Dialyser reuse frequency in HD centres, 2011-2021	74
Table 5.2.6(a): Distribution of delivered Kt/V, HD patients 2017-2021	75
Table 5.2.6(b): Distribution of URR, HD patients 2017-2021	75
Table 5.2.7(a): Variation in median blood flow rates in HD patients, HD centres, 2011-2021	76
Table 5.2.7 (b): Proportion of patients with blood flow rates > 300 ml/min, HD centres 2011-2021	77
Table 5.2.7(c): Proportion of patients with 3 HD sessions per week, HD centres 2011-2021	78
Table 5.2.7(d): Median delivered Kt/V in HD patients, HD centres 2017-2021	78
Table 5.2.7(e): Proportion of patients with delivered Kt/V ≥ 1.2 , HD centres 2017-2021	79
Table 5.2.7(f): Median URR among HD patients, HD centres 2017-2021	79
Table 5.2.7(g): Proportion of HD patients with URR $\geq 65\%$, HD centres 2017-2021	80
Table 5.3.1(a): Unadjusted technique survival by era, 2002-2021	81
Table 5.3.1(b): Unadjusted technique survival by year of entry (censored for death & transplant), 2002-2021	82
Table 5.3.2(a): Unadjusted technique survival by age, 2011-2021	83
Table 5.3.2(b): Unadjusted technique survival by age (censored for death & transplant), 2011-2021	84
Table 5.3.3(a): Unadjusted technique survival by diabetes status, 2011-2021	85
Table 5.3.3(b): Unadjusted technique survival by diabetes status (censored for death & transplant), 2011-2021	86
Table 6.1.1: Peritoneal dialysis regimes, 2011-2021	88
Table 6.1.2: CAPD connectology, 2011-2021	89
Table 6.1.3(a): CAPD Number of Exchanges per day, 2011-2021	90
Table 6.1.3(b) (i): CAPD total dwell volumes per day, 2011-2021	90
Table 6.1.3(b) (ii): APD total dwell volumes per day, 2011-2021	91
Table 6.1.4: Assistance to Perform PD, 2011-2021	92
Table 6.2.1: Distribution of delivered Kt/V, PD patients 2011-2021	93
Table 6.2.2: Variation in proportion of patients with Kt/V ≥ 1.7 per week among PD centres, 2011-2021	93
Table 6.2.3: Peritoneal transport status by PET D/P creatinine at 4 hours, new PD patients 2011-2021	94
Table 6.2.4: Peritoneal Transport Status (PET) with dialysis vintage	95
Table 6.3.1(a): Unadjusted technique survival by era, 2002-2021 (uncensored for death and transplant)	96

Table 6.3.1(b): Unadjusted technique survival by era, 2002-2021 (censored for death and transplant)	96
Table 6.3.2(a): Unadjusted technique survival by age (uncensored for death and transplant)	97
Table 6.3.2(b): Unadjusted technique survival by age (censored for death and transplant)	98
Table 6.3.3(a): Unadjusted technique survival by gender (uncensored for death and transplant)	99
Table 6.3.3(b): Unadjusted technique survival by gender (censored for death and transplant)	99
Table 6.3.4(a): Unadjusted technique survival by diabetes status (uncensored for death and transplant)	100
Table 6.3.4(b): Unadjusted technique survival by diabetes status (censored for death and transplant)	100
Table 6.3.5: Unadjusted technique survival by Kt/V	101
Table 6.3.6: Reasons for drop-out from PD program, 2011-2021	102
Table 6.3.7: Drop-out rate from PD program with time on treatment, 2011-2021	103
Table 6.4.1: Variation of peritonitis rate (pt-month/epi) among PD centres, 2011-2021	104
Table 6.4.2: Causative organism in PD peritonitis, 2011-2021	105
Table 6.4.3: Overall outcomes of PD peritonitis, 2011-2021	106
Table 6.4.4(a): Outcome of peritonitis by causative organism, 2011-2016	107
Table 6.4.4(b): Outcome of peritonitis by causative organism, 2017-2021	107
Table 6.4.5: Risk factors influencing peritonitis rate, 2011-2021	108
Table 7.1.1: Stock and flow of renal transplantation, 2011-2021	110
Table 7.1.2: New transplant rate per million population (pmp), 2011-2021	111
Table 7.1.3: Transplant prevalence rate per million population (pmp), 2011-2021	111
Table 7.1.4: Places of transplantation, 2011-2021	114
Table 7.2.1: Renal transplant recipients' characteristics, 2011-2021	115
Table 7.2.2: Primary causes of end stage renal failure, 2011-2021	116
Table 7.3.1: Type of renal transplantation, 2011-2021	117
Table 7.3.2: Biochemical data, 2017-2021	118
Table 7.3.3 (a): Immunosuppressive Medications, 2017-2021	120
Table 7.3.3(b): Immunosuppressive Medications, 2017-2021	121
Table 7.3.4: Non immunosuppressive medications, 2017-2021	122
Table 7.4.1: Post transplant complications, 2011-2021	123
Table 7.4.2: Transplant patient death rate and graft loss, 2011-2021	124
Table 7.4.3: Causes of death in transplant recipients, 2011-2021	124
Table 7.4.4: Causes of graft failure, 2011-2021	125
Table 7.5.1(a): Patient survival, 2011-2021	126
Table 7.5.2(a): Allograft survival, 2011-2021	126
Table 7.5.1(b): Risk factors for transplant recipient mortality 2011-2021	127
Table 7.5.2(b): Risk factors for allograft loss 2011-2021	128
Table 7.5.3: Unadjusted patient survival by type of transplant, 2011-2021	129
Table 7.5.4: Allograft survival by type of transplant, 2011-2021	129
Table 7.5.5(a): Patient survival by year of transplant (Living related transplant, 2011-2021)	130
Table 7.5.5(b): Allograft survival by year of transplant (Living related transplant, 2011-2021)	131
Table 7.5.6(a): Patient survival by year of transplant (Commercial deceased donor transplant, 2011-2021)	131
Table 7.5.6(b): Allograft survival by year of transplant (commercial deceased donor transplant, 2011-2021)	132
Table 7.6.1: Risk factors for IHD in renal transplant recipients at year 2017-2021	133
Table 7.6.2(a): Systolic BP, 2017-2021	135
Table 7.6.2(b): Diastolic BP, 2017-2021	135
Table 7.6.3(a): Treatment for hypertension, 2017-2021	136
Table 7.6.3(b): Distribution of systolic BP without antihypertensives, 2017-2021	136
Table 7.6.3(c): Distribution of diastolic BP without antihypertensives, 2017-2021	136
Table 7.6.3(d): Distribution of systolic BP on antihypertensives, 2017-2021	136
Table 7.6.3(e): Distribution of diastolic BP on antihypertensives, 2017-2021	136
Table 7.6.4: CKD stages, 2017-2021	137
Table 7.6.5: BMI, 2017-2021	138

Table 7.6.6(a): LDL, 2017-2021	139
Table 7.6.6(b): Total cholesterol, 2017-2021	139
Table 7.6.6(c): HDL, 2017-2021	139
Table 7.7.1: Cumulative distribution of QoL-Index score in relation to dialysis modality, transplant recipient patients 2011-2021	141
Table 7.7.2: Cumulative distribution of QoL-Index score in relation to diabetes mellitus, transplant recipient patients 2011-2021	141
Table 7.7.3: Cumulative distribution of QoL-Index score in relation to gender, transplant recipient patients 2011-2021	142
Table 7.7.4: Cumulative distribution of QoL-Index score in relation to age, transplant recipient patients 2011-2021	142
Table 7.7.5: Cumulative distribution of QoL-Index score in relation to year of entry, transplant recipient patients 2011-2021	143

LIST OF FIGURES

Figure 1.1.1(a): Number of new KRT patients by modality (New Dialysis and New Transplant), Malaysia 1969-2021	3
Figure 1.1.1(b): Proportion of new KRT patients by modality (New Dialysis and New Transplant), Malaysia 1969-2021	4
Figure 1.1.2(a): Prevalence of treated ESKD patients by modality (On KRT at 31st Dec), Malaysia 1969-2021	5
Figure 1.1.2(b): Proportion of treated prevalent ESKD patients by modality (On KRT at 31st Dec), Malaysia 1969-2021	5
Figure 1.2.1: Incidence rate of newly treated ESKD patients (per million population) by modality (New Dialysis and New Transplant), Malaysia 1969-2021	6
Figure 1.2.2: Prevalence rate of treated ESKD patients (per million population) by modality (On KRT at 31st Dec), Malaysia 1969-2021	7
Figure 1.2.3: Kidney transplant rate per 1000 dialysis patients in Malaysia, 1969-2021	9
Figure 1.2.3(b): Kidney transplant rate per 1000 dialysis patients in Malaysia in Ln 1969 – 2021	9
Figure 2.1.1: New Dialysis (Hemodialysis & Chronic PD) Incidence Rate per Million Population, Malaysia 1969-2021	12
Figure 2.1.3(a): Dialysis Treatment Rate by Gender 1969-2021	14
Figure 2.1.3(b): Gender Distribution of Dialysis Patients 1969-2021	14
Figure 2.1.4(a): Dialysis Treatment Rate by Age Group 1969-2021	15
Figure 2.1.4(b): Age Distribution of Dialysis Patients 1969-2021	16
Figure 2.1.5: Method and Location of Dialysis Patients 1969-2021	17
Figure 2.1.6: Funding for Dialysis Treatment 1969-2021	18
Figure 2.1.7: Distribution of Dialysis Patients by Sector 1969-2021	19
Figure 2.1.7(a): Distribution of Dialysis Patients by Modality and Sector 1969-2021	20
Figure 2.1.8: Primary Renal Diseases for New Dialysis Patients 1969-2021	21
Figure 2.2.1(a): Number of Dialysis Centre in Malaysia by Sector, 1969-2021	22
Figure 2.2.1(b): Number of HD and PD Centre in Malaysia by Sector, 1969-2021	22
Figure 2.2.2(a): Prevalence Rate of Dialysis Patient (HD+PD) Malaysia by Sector, 1969-2021	23
Figure 2.2.2(b): Prevalence Rate of HD and PD Patient in Malaysia by Sector, 1969-2021	23
Figure 2.2.3: Distribution of Dialysis Patients by Modality and Region 1969-2021	24
Figure 3.1.1: Death rates on dialysis 2001-2021	30
Figure 3.2.1: Patient survival by dialysis modality analysis (not censored for change of modality)	32
Figure 3.2.2: Unadjusted patient survival by age	34
Figure 3.2.3: Unadjusted patient survival by diabetes mellitus status	35
Figure 3.2.4(a): Unadjusted patient survival by 4 Era, 2002-2021	36
Figure 3.2.4(b): Adjusted for Age and Diabetes patient survival by 4 Era, 2002-2021	36
Figure 3.3.1(a): Variation in patient survival at 1-year among HD centres adjusted for age and diabetes mellitus status, 2011-2020	37
Figure 3.3.1(c): Variation in patient survival at 5-years among HD centres adjusted for age and diabetes mellitus status, 2011-2016	37
Figure 3.3.1(b): Funnel plot at 1-year among HD centres adjusted for age and diabetes mellitus status, 2011-2020 cohort	37
Figure 3.3.1(d): Funnel plot for patient survival at 5-years among HD centres adjusted age and diabetes mellitus, 2011-2016 cohort	37
Figure 3.3.2(a): Variation in patient survival at 1-year among PD centres adjusted for age and diabetes mellitus, 2011-2020	38
Figure 3.3.2(c): Variation in patient survival at 5-years among PD centres adjusted for age and diabetes mellitus, 2011-2016	38

Figure 3.3.2(b): Funnel plot at 1-year among PD centres adjusted for age and diabetes mellitus status, 2011-2020 cohort	38
Figure 3.3.2(d): Funnel plot for patient survival at 5-years among PD centres adjusted age and diabetes mellitus, 2011-2016 cohort	38
Figure 3.4.1(a): Adjusted hazard ratio for mortality of dialysis patients uncensored for change of modality by diastolic blood pressure (2001-2021 cohort)	41
Figure 3.4.1(b): Adjusted hazard ratio for mortality of dialysis patients uncensored for change of modality by haemoglobin (2001-2021 cohort)	41
Figure 3.4.1(c): Adjusted hazard ratio for mortality of dialysis patients uncensored for change of modality by serum phosphate (2001-2021 cohort)	41
Figure 3.4.2: Adjusted hazard ratio for mortality of HD patients uncensored for change of modality by Kt/V (2001-2021 cohort)	43
Figure 3.4.4(a): Variations in RAMR by HD centre, 2021	46
Figure 3.4.4(b): Funnel plot of RAMR by HD centre, 2021	46
Figure 3.4.5(a): Variations in RAMR by PD centres, 2021	46
Figure 3.4.5(b): Funnel plot for RAMR by PD centres, 2021	46
Figure 4.1.3: Variation in ESAs utilization (% patients) among HD centres, 2021	49
Figure 4.1.4: Variation in ESAs utilization (% patients) among PD centres, 2021	49
Figure 4.1.5: Variation in mean weekly ESAs dose (u/week) among HD centres, 2021	50
Figure 4.1.6: Variation in mean weekly ESAs dose (u/week) among PD centres, 2021	50
Figure 4.1.7: Variation in use of blood transfusion (% patients) among HD centres, 2021	51
Figure 4.1.8: Variation in use of blood transfusion (% patients) among PD centres, 2021	51
Figure 4.2.1: Cumulative Distribution of serum ferritin without ESAs, HD patients 2011-2021	53
Figure 4.2.2: Distribution of serum ferritin without ESAs, PD patients 2011-2021	53
Figure 4.2.3: Cumulative distribution of serum ferritin on ESAs, HD patients 2011-2021	54
Figure 4.2.4: Cumulative distribution of serum ferritin on ESAs, PD patients 2011-2021	54
Figure 4.2.5: Cumulative distribution of transferrin saturation without ESAs, HD patients 2011-2021	56
Figure 4.2.6: Cumulative distribution of transferrin saturation without ESAs, PD patients 2011-2021	56
Figure 4.2.7: Cumulative distribution of transferrin saturation on ESAs, HD patients 2011-2021	57
Figure 4.2.8: Cumulative distribution of transferrin saturation on ESAs, PD patients 2011-2021	57
Figure 4.2.9(a): Variation in median serum ferritin among patients on ESAs, HD centres 2021	58
Figure 4.2.9(b): Variation in proportion of patients on ESAs with serum ferritin ≥ 100 ng/ml, HD centres 2021	58
Figure 4.2.9(c): Variation in median transferrin saturation among patients on ESAs HD centres 2021	59
Figure 4.2.9(d): Variation in proportion of patients on ESAs with transferrin saturation $\geq 20\%$, HD centres 2021	59
Figure 4.2.10(a): Variation in median serum ferritin among patients on ESAs, PD centres 2021	60
Figure 4.2.10(b): Variation in proportion of patients on ESAs with serum ferritin ≥ 100 ng/ml, PD centres 2021	60
Figure 4.2.10(c): Variation in median transferrin saturation among patients on ESAs, PD centres 2021	61
Figure 4.2.10(d): Variation in proportion of patients on ESAs with transferrin saturation $\geq 20\%$, PD centres 2021	61
Figure 4.3.1: Cumulative distribution of haemoglobin concentration without ESAs, HD patients 2011-2021	62
Figure 4.3.2: Cumulative distribution of haemoglobin concentration without ESAs, PD patients 2011-2021	62
Figure 4.3.3(a): Cumulative distribution of haemoglobin concentration on ESAs, diabetes HD patients 2011-2021	63
Figure 4.3.3(b): Cumulative distribution of haemoglobin concentration on ESAs, non-diabetes HD patients 2011-2021	63
Figure 4.3.4(a): Cumulative distribution of haemoglobin concentration on ESAs, diabetes PD patients 2011-2021	63
Figure 4.3.4(b): Cumulative distribution of haemoglobin concentration on ESAs, non-diabetes PD patients 2011-2021	63
Figure 4.3.5(a): Variation in median haemoglobin level among patients on ESAs, HD centres 2021	64

Figure 4.3.5(b): Variation in proportion of patients on ESAs with haemoglobin level > 10g/dL, HD centres 2021	164
Figure 4.3.6(a): Variation in median haemoglobin level among patients on ESAs, PD centres 2021	65
Figure 4.3.6(b): Variation in proportion of patients on ESAs with haemoglobin level >10g/dL, PD centres, 2021	165
Figure 5.2.1: Blood flow rates in HD centers, 2011-2021	71
Figure 5.2.4: Dialyser membrane types in HD centres, 2011-2021	73
Figure 5.2.6(a): Cumulative distribution of delivered Kt/V, HD patients 2017-2021	75
Figure 5.2.6(b): Cumulative distribution of URR, HD patients 2017-2021	75
Figure 5.2.7(a): Variation in median blood flow rates in HD patients among centres 2021	76
Figure 5.2.7(b): Variation in Proportion of patients with blood flow rates \geq 300 ml/min among HD centres 2021	76
Figure 5.2.7(c): Variation in proportion of patients with 3 HD sessions per week among HD centres 2021	78
Figure 5.2.7(d): Variation in median delivered Kt/V in HD patients among HD centres 2021	78
Figure 5.2.7(e): Variation in proportion of patients with delivered Kt/V \geq 1.2, HD centres 2021	79
Figure 5.2.7(f): Variation in median URR among HD patients, HD centres 2021	79
Figure 5.2.7(g): Variation in proportion of patients with URR \geq 65% among HD centres 2021	80
Figure 5.3.1(a): Unadjusted technique survival by year of entry, 2011-2021	81
Figure 5.3.1(b): Unadjusted technique survival by year of entry (censored for death & transplant), 2011-2021	81
Figure 5.3.2(a): Unadjusted technique survival by age, 2011-2021	83
Figure 5.3.2(b): Unadjusted technique survival by age (censored for death & transplant), 2011-2021	83
Figure 5.3.3(a): Unadjusted technique survival by diabetes status, 2011-2021	85
Figure 5.3.3(b): Unadjusted technique survival by diabetes status (censored for death & transplant), 2011-2021	85
Figure 6.1.4(a): Assistance to Perform CAPD, 2011-2021	92
Figure 6.1.4(b): Assistance to Perform APD, 2011-2021	92
Figure 6.2.2: Variation in proportion of patients with Kt/V \geq 1.7 per week among PD centres 2011-2021	94
Figure 6.3.1(a): Unadjusted technique survival by era, 2002-2021 (uncensored for death and transplant)	97
Figure 6.3.1(b): Unadjusted technique survival by era, 2002-2021 (censored for death and transplant)	97
Figure 6.3.2(a): Unadjusted technique survival by age (uncensored for death and transplant)	98
Figure 6.3.2(b): Unadjusted technique survival by age (censored for death and transplant)	98
Figure 6.3.3(a): Unadjusted technique survival by gender (uncensored for death and transplant)	99
Figure 6.3.3(b): Unadjusted technique survival by gender (censored for death and transplant)	99
Figure 6.3.4(a): Unadjusted technique survival by diabetes status (uncensored for death and transplant)	100
Figure 6.3.4(b): Unadjusted technique survival by diabetes status (censored for death and transplant)	100
Figure 6.3.5: Unadjusted technique survival by Kt/V	101
Figure 6.3.6: Reasons for drop-out from PD program, 2011-2021	102
Figure 6.4.1: Variation in peritonitis rate among PD centres, 2021	104
Figure 6.4.2: Causative organism in PD peritonitis, 2011-2021	106
Figure 6.4.4: Outcome of peritonitis by causative organism by era, 2011-2016 & 2017-2021	108
Figure 7.1.1: Stock and flow of renal transplantation, 1990-2021	111
Figure 7.1.2: New transplant rate, 1990-2021	111
Figure 7.1.3: Transplant prevalence rate, 1990-2021	111
Figure 7.1.4(a): Places of transplantation, 2011-2021	112
Figure 7.1.4(b): Place of transplantation within Malaysia	113
Figure 7.4.2(a): Transplant recipient death rate, 1990-2021	124
Figure 7.4.2(b): Transplant recipient allograft loss rate, 1990-2021	124
Figure 7.5.1(a): Patient survival, 2011-2021	126
Figure 7.5.2(a): Allograft survival, 2011-2021	126
Figure 7.5.3: Patient survival by type of transplant, 2011-2021	129
Figure 7.5.4: Graft survival by type of transplants, 2011-2021	129
Figure 7.5.5(a): Patient survival by year of transplant (Living related transplant, 2011-2021)	130
Figure 7.5.5(b): Allograft survival by year of transplant (Living related transplant, 2011-2021)	130

Figure 7.5.6(a): Patient survival by year of transplant (Commercial deceased donor transplant, 2011-2021)	132
Figure 7.5.6(b): Graft survival by year of transplant (Commercial deceased donor transplant, 2011-2021)	132
Figure 7.6.1(a): Venn diagram for pre and post transplant complications (in %) at year 2017	133
Figure 7.6.1(b): Venn diagram for pre and post transplant complications (in %) at year 2018	133
Figure 7.6.1(c): Venn diagram for pre and post transplant complications (in %) at year 2019	134
Figure 7.6.1(d): Venn diagram for pre and post transplant complications (in %) at year 2020	134
Figure 7.6.1(e): Venn diagram for pre and post transplant complications (in %) at year 2021	134
Figure 7.6.2(a): Systolic BP, 2017-2021	135
Figure 7.6.2(b): Diastolic BP, 2017-2021	135
Figure 7.6.4: CKD stages by year	137
Figure 7.6.5: BMI, 2017-2021	138
Figure 7.6.6(a): LDL, 2017-2021	139
Figure 7.6.6(b): Total cholesterol, 2017-2021	139
Figure 7.6.6(c): HDL, 2017-2021	140
Figure 7.7.1: Cumulative distribution of QoL-Index score in relation to dialysis modality, transplant recipient patients 2011-2021	141
Figure 7.7.2: Cumulative distribution of QoL-Index score in relation to diabetes mellitus, transplant recipient patients 2011-2021	141
Figure 7.7.3: Cumulative distribution of QoL-Index score in relation to gender, transplant recipient patients 2011-2021	142
Figure 7.7.4: Cumulative distribution of QoL-Index score in relation to age, transplant recipient patients 2011-2021	142
Figure 7.7.5: Cumulative distribution of QoL-Index score in relation to year of entry, transplant recipient patients 2011-2021	142

EXECUTIVE SUMMARY

At the end of 2021, there were 49,770 patients receiving dialysis in Malaysia, and this was a one and a-half-fold increase from 29,443 in 2012. While the new intake of dialysis patients was 6,695 in 2012, this was 9,123 in 2021. The equivalent incidence and prevalence of patients on dialysis was 278 and 1,528 per million population in 2021. Among the incident dialysis patients, 18.0% were on peritoneal dialysis while 11.7% of the prevalent dialysis patients were on PD. The increase in the dialysis population was mainly contributed by the rapid growth in private haemodialysis in the last 15 years. The dialysis population was aging in Malaysia as patients above 55 years old made up 59.5% of all new dialysis patients in 2021 versus 57.2% in 2012. Diabetes mellitus was the primary renal disease in 53% of new dialysis patients in 2021.

The increase in HD centres was mainly contributed by the private dialysis centres which had gone up 1.4-fold over the last 10 years. NGO centres had hardly increased over the same time, while the public sector grew by 28%. Most of the increases in the private sector occurred in the more economically developed west coast states of Peninsular Malaysia. Although the public, NGO and private sectors provided 39.4%, 17.4% and 53.2% of overall dialysis treatment in 2021 respectively, the government provided 83.5% of total funding for dialysis.

The annual death rate on dialysis in 2021 was 18%. In 2021, the death rate was 18% among haemodialysis patients while peritoneal dialysis patients had an annual death rate of 21%. For the first time infections superseded cardiovascular disease as the main cause of death; a deadly “delta wave” from Covid 19 caused an overall 3% mortality amongst dialysis patients in 2021.

Ninety-two percent of HD patients and 84% of PD patients received Erythropoiesis Stimulating Agents (ESAs) in 2021. A small percentage of dialysis patients still received blood transfusions (6% HD, 3% PD) with a marked drop compared to 2012 (14% HD and 18% PD).

In 2021, there were a total of 55 PD centres reported to NRR, 49 in public sector and 6 in private sector. In 2021, 11.6% of the total PD population was on APD, no change from the rate of 11.3% in 2012.

Despite the rapid increase in dialysis population, the number of kidney transplantation performed in patients had remained very low. There were 77 kidney transplantations done in the country in 2021. The transplantation rate was 2 per million population which is an all-time low. Patient survival rates were 98%, 94% and 81.5% at 1- year, 5-years, and 10-years respectively. Graft survival rate at 1-year was 97%, 5-years 91% and 10-years 82%.