

CHAPTER 10

Hepatitis on Dialysis

Teo Sue Mei
Clare Tan Hui Hong
Chow Yok Wai
T. Thiruventhiran

Table 10.1: Prevalence of positive HBsAg and positive Anti-HCV at annual survey, HD patients 2002-2011

Year	Number of patients	Prevalence of HBsAg+ (%)	Prevalence of Anti-HCV+ (%)
2002	6106	5	20
2003	6977	5	19
2004	7618	5	17
2005	8957	4	14
2006	11295	5	12
2007	12496	5	11
2008	14951	4	9
2009	17353	4	8
2010	18829	4	7
2011	22070	4	6

Table 10.2: Prevalence of positive HBsAg and positive Anti-HCV at annual survey, PD patients 2002-2011

Year	Number of patients	Prevalence of HBsAg+ (%)	Prevalence of Anti-HCV+ (%)
2002	891	3	4
2003	1223	3	4
2004	1200	4	5
2005	1318	4	5
2006	1494	5	4
2007	1731	5	4
2008	2017	4	3
2009	2144	4	3
2010	2280	3	3
2011	2521	3	3

Table 10.3: Variation in Proportion of patients with positive HBsAg at annual survey among HD centres, 2002-2011

Year	Number of centres	Min	5th Centile	LQ	Median	UQ	95th Centile	Max
2002	153	0	0	0	3	8	14	26
2003	183	0	0	0	3	8	15	73
2004	210	0	0	0	3	8	14	92
2005	241	0	0	0	2	6	15	100
2006	288	0	0	0	1	6	16	94
2007	319	0	0	0	0	7	15	100
2008	370	0	0	0	0	6	12	100
2009	403	0	0	0	0	5	13	96
2010	445	0	0	0	0	5	12	100
2011	500	0	0	0	0	4.5	13	96

Figure 10.3: Variation in proportion of patients with positive HBsAg among HD centres, 2011

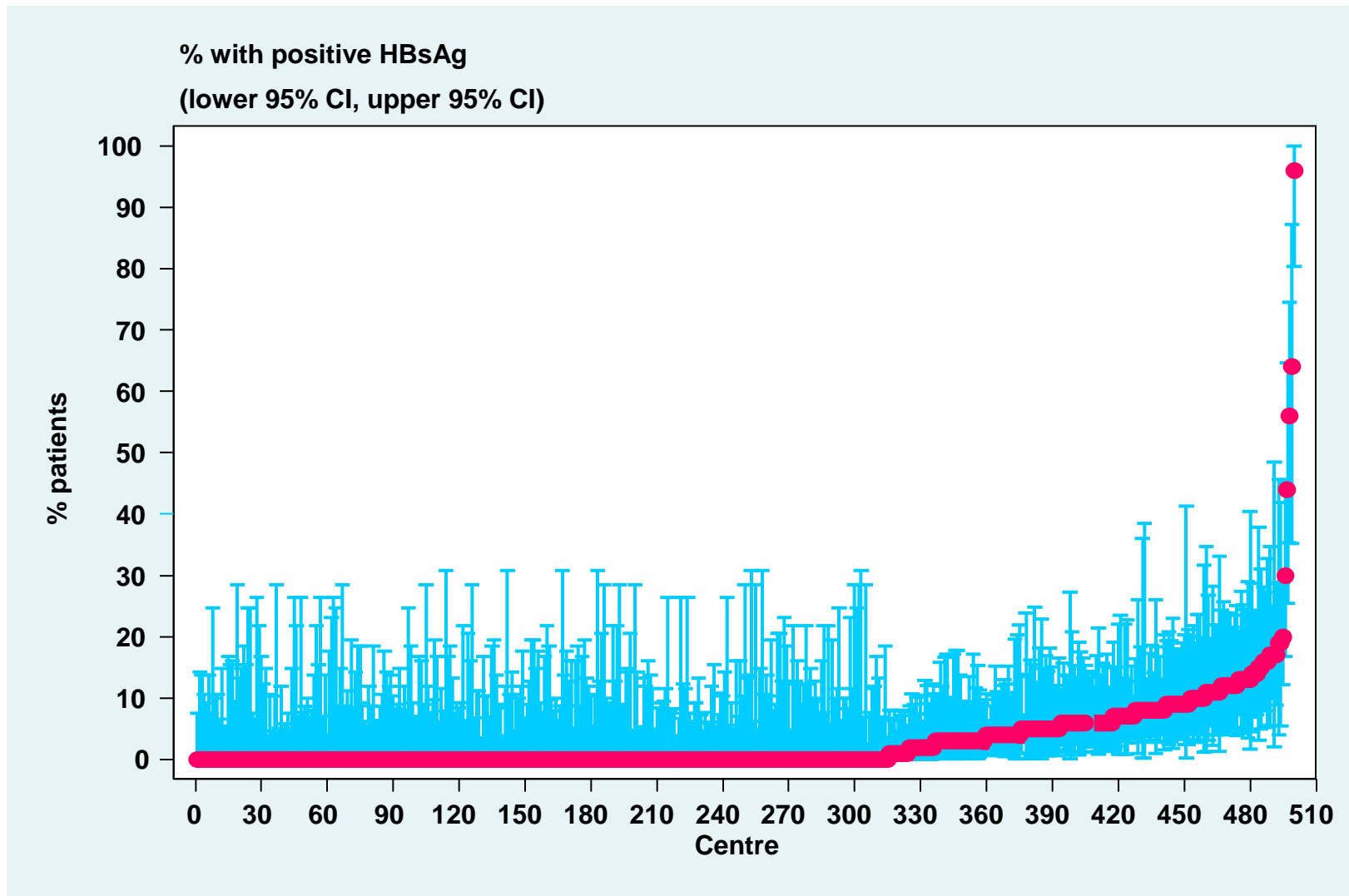


Table 10.4: Variation in proportion of patients with positive HBsAg at annual survey among PD centres, 2002-2011

Year	Number of centres	Min	5th Centile	LQ	Median	UQ	95th Centile	Max
2002	15	0	0	1	3	6	18	18
2003	18	0	0	2	4	6	8	8
2004	18	0	0	1	3.5	5	11	11
2005	19	0	0	1	3	5	10	10
2006	22	0	0	2	4	6	9	13
2007	22	0	0	0	4	6	8	11
2008	23	0	0	1	4	5	10	13
2009	24	0	0	1	3.5	5	9	10
2010	24	0	0	1	3	4	6	7
2011	27	0	0	0	2	4	5	16

Figure 10.4: Variation in proportion of patients with positive HBsAg among PD centres, 2011

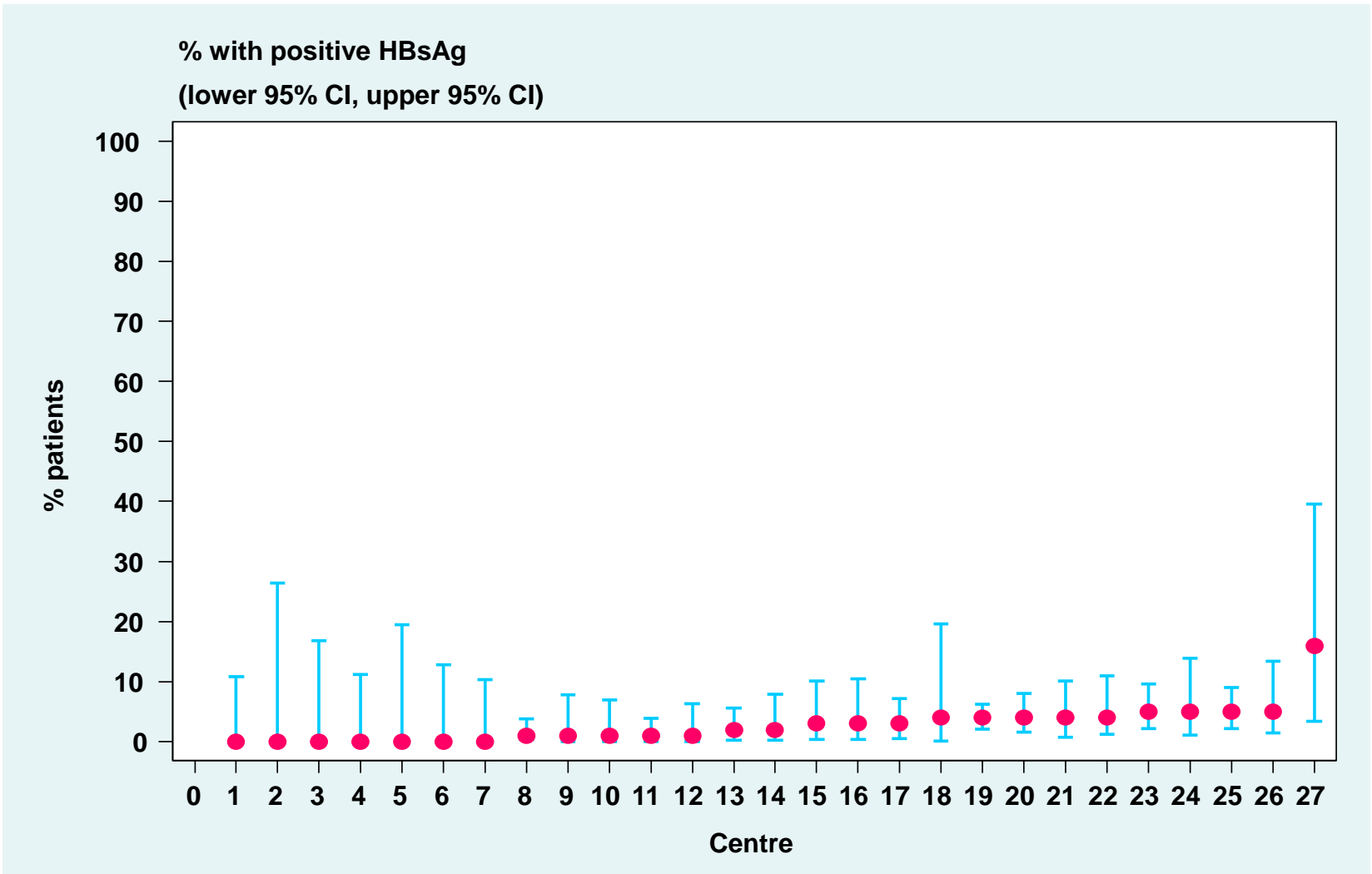


Table 10.5: Variation in proportion of patients with positive anti-HCV at annual survey among HD centres, 2002-2011

Year	Number of centre	Min	5th centile	LQ	Median	UQ	95th centile	Max
2002	153	0	0	5	15	26	54	94
2003	183	0	0	6	14	25	50	90
2004	212	0	0	4	12	24	50	100
2005	243	0	0	0	10	21	38	98
2006	287	0	0	0	8	18	40	98
2007	318	0	0	0	7	14	35	100
2008	370	0	0	0	5	12	30	100
2009	403	0	0	0	3	10	27	98
2010	445	0	0	0	1	9	24	98
2011	500	0	0	0	0	8	21.5	100

Figure 10.5: Variation in proportion of patients with positive anti-HCV among HD centres, 2011

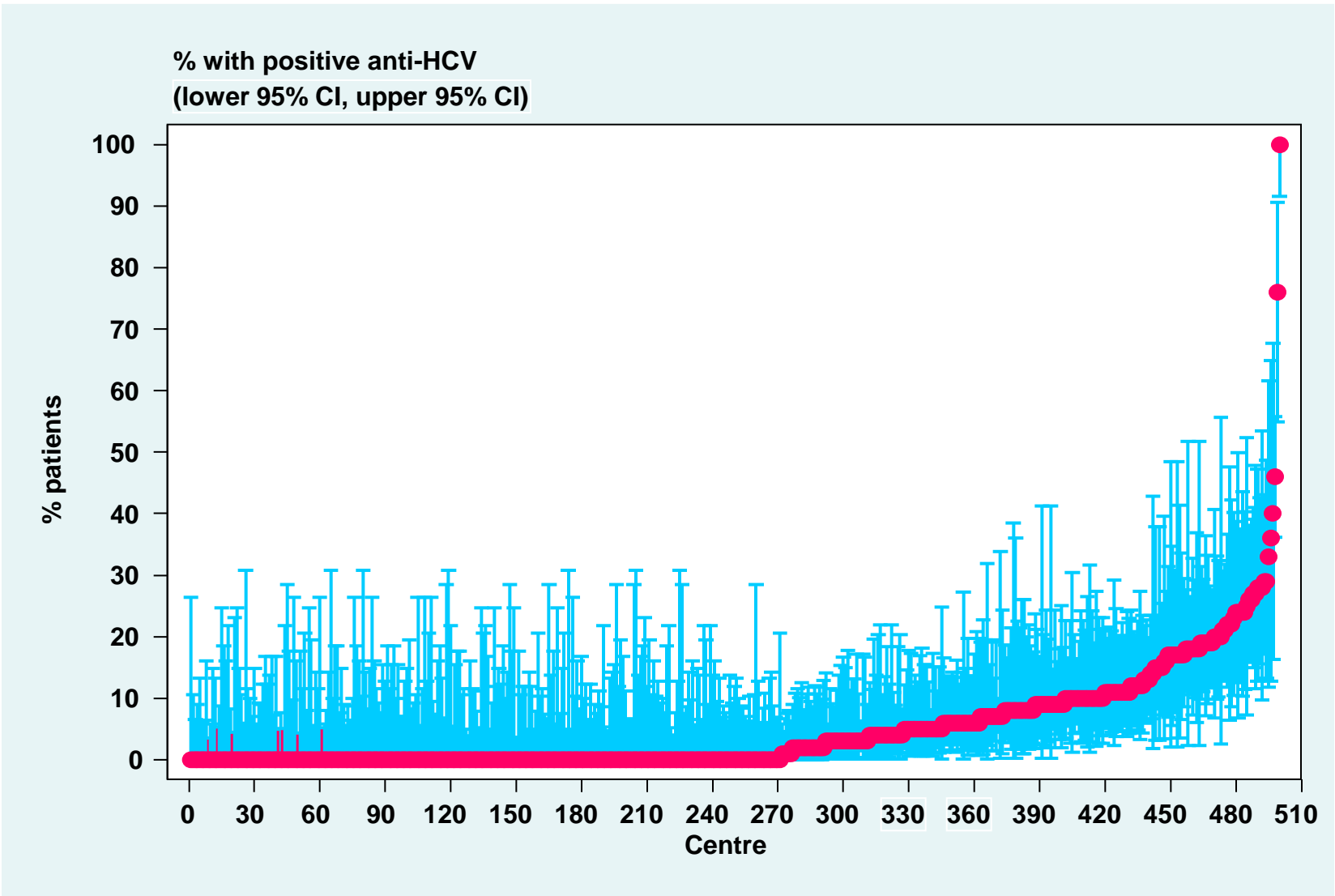


Table 10.6: Variation in proportion of patients with positive anti-HCV at annual survey among PD centres, 2002-2011

Year	Number of centre	Min	5th centile	LQ	Median	UQ	95th centile	Max
2002	15	0	0	0	3	8	11	11
2003	18	0	0	1	4.5	7	9	9
2004	18	0	0	1	4.5	7	10	10
2005	19	0	0	2	4	8	11	11
2006	22	0	0	1	2.5	6	8	11
2007	22	0	0	1	2.5	6	8	9
2008	23	0	0	0	4	4	5	9
2009	24	0	0	0	2	3.5	7	7
2010	24	0	0	0.5	2	3	5	7
2011	26	0	0	0	2	4	8	11

Figure 10.6: Variation in proportion of patients with positive anti-HCV among PD centres, 2011

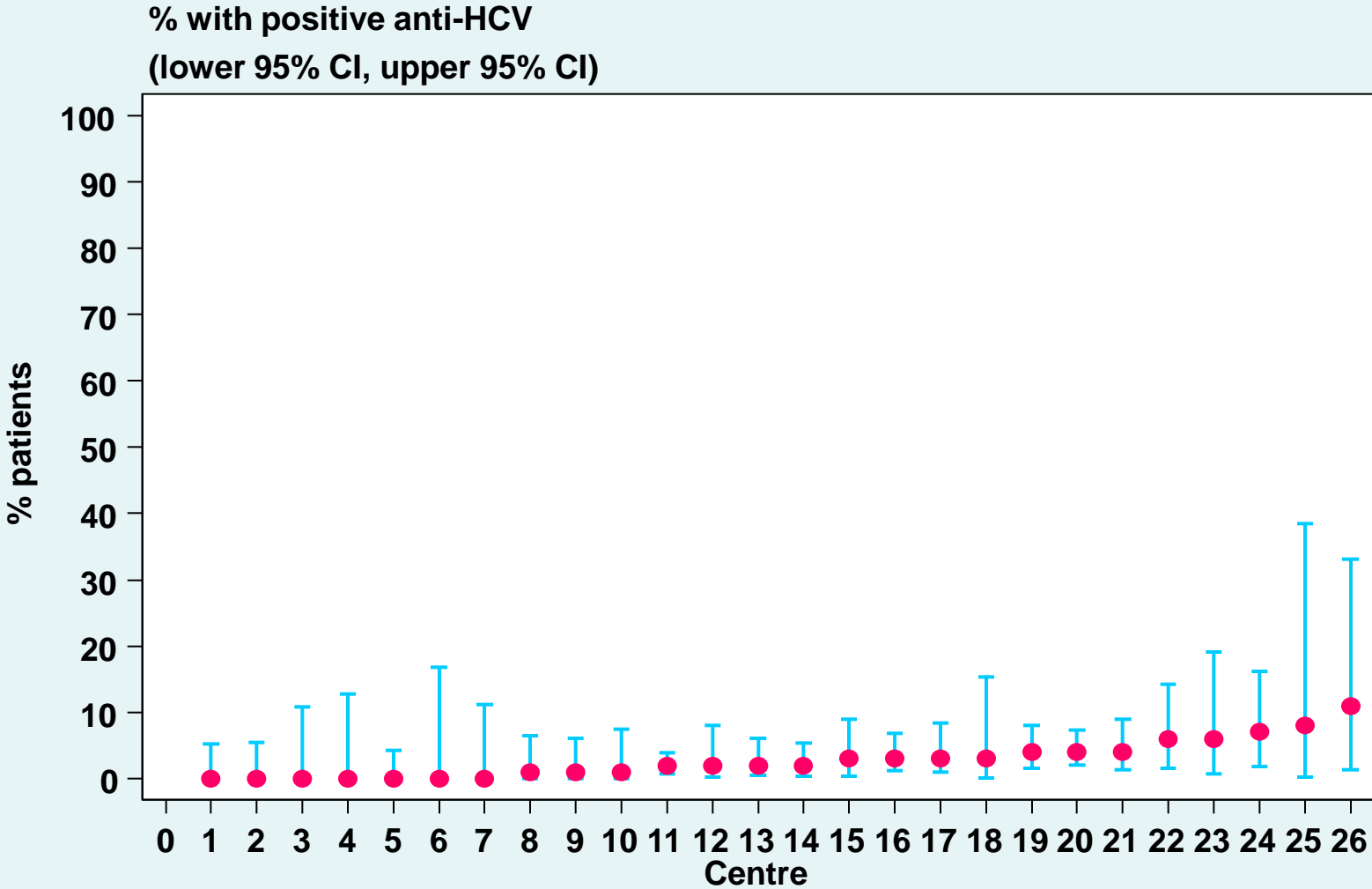


Table 10.7 (a): Cumulative risk of sero-conversion to HBsAg positive among sero-negative patients at entry into dialysis, comparing HD and PD 2002-2011

Modality	PD		HD	
Interval (years)	% Cumulative probability	SE*	% Cumulative probability	SE*
1	0.72	0.21	0.33	0.10
2	1.31	0.17	0.72	0.11
3	1.60	0.09	0.96	0.07
4	1.85	0.07	1.11	0.04
5	1.97	0.04	1.20	0.03
6	2.05	0.03	1.27	0.02
7	2.12	0.02	1.32	0.01
8			1.36	0.01
9			1.37	0.00
10			1.37	0.00

Figure 10.7 (a): Cumulative risk of sero-conversion to HbsAg positive among sero-negative patients at entry into dialysis, comparing HD and PD 2002-2011

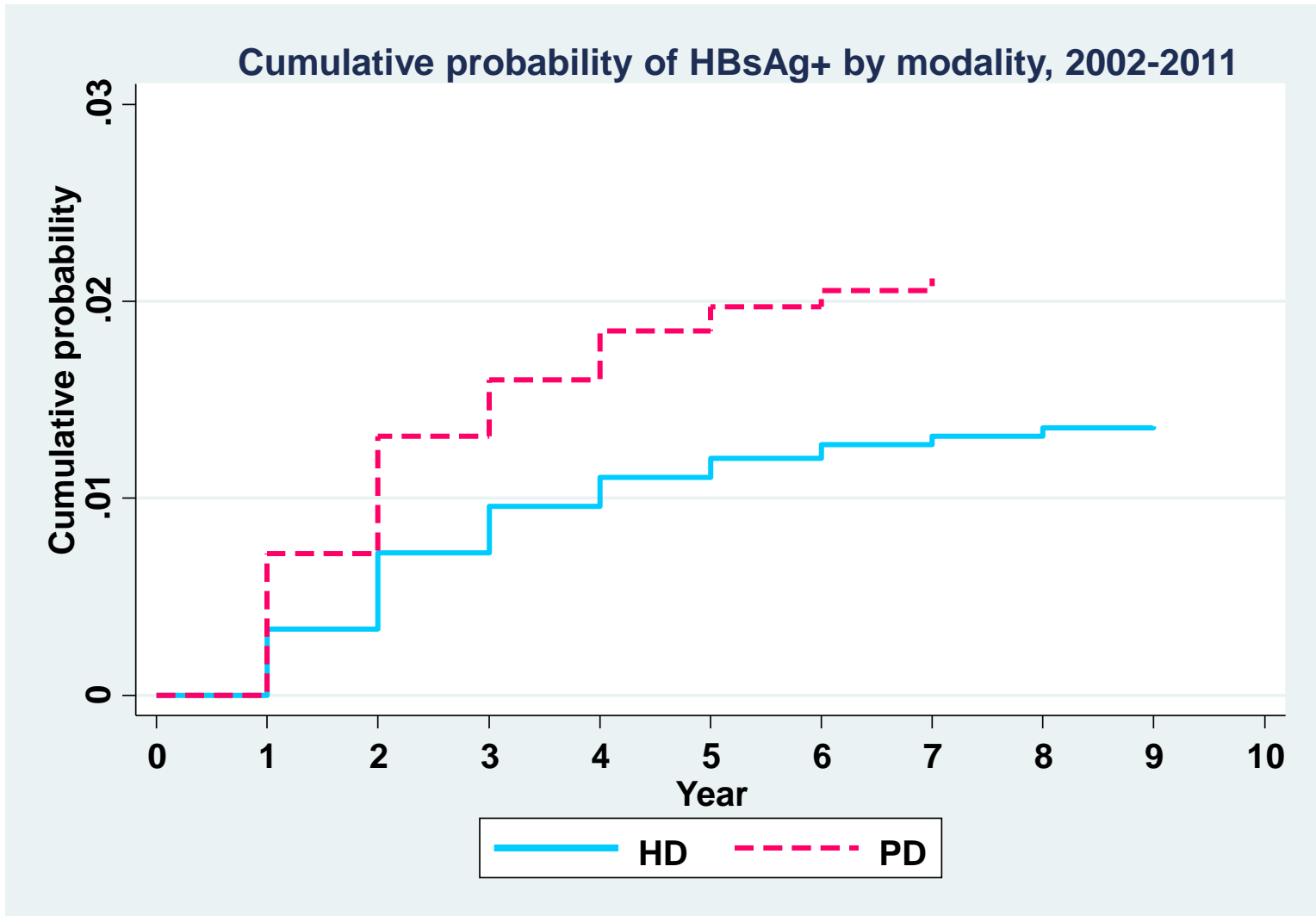


Table 10.7 (b): Cumulative risk of sero-conversion to anti HCV antibody positive among sero-negative patients at entry into dialysis, comparing HD and PD 2002-2011

Modality	PD		HD	
Interval (years)	% Cumulative probability	SE*	% Cumulative probability	SE*
1	0.57	0.17	0.38	0.11
2	1.20	0.19	1.18	0.23
3	1.38	0.06	1.70	0.15
4	1.53	0.04	2.15	0.13
5	1.63	0.03	2.35	0.06
6	1.69	0.02	2.49	0.04
7	1.73	0.01	2.56	0.02
8			2.62	0.02
9			2.64	0.01
10			2.66	0.00

Figure 10.7 (b): Cumulative risk of sero-conversion to anti HCV antibody positive among sero-negative patients at entry into dialysis, comparing HD and PD 2002-2011

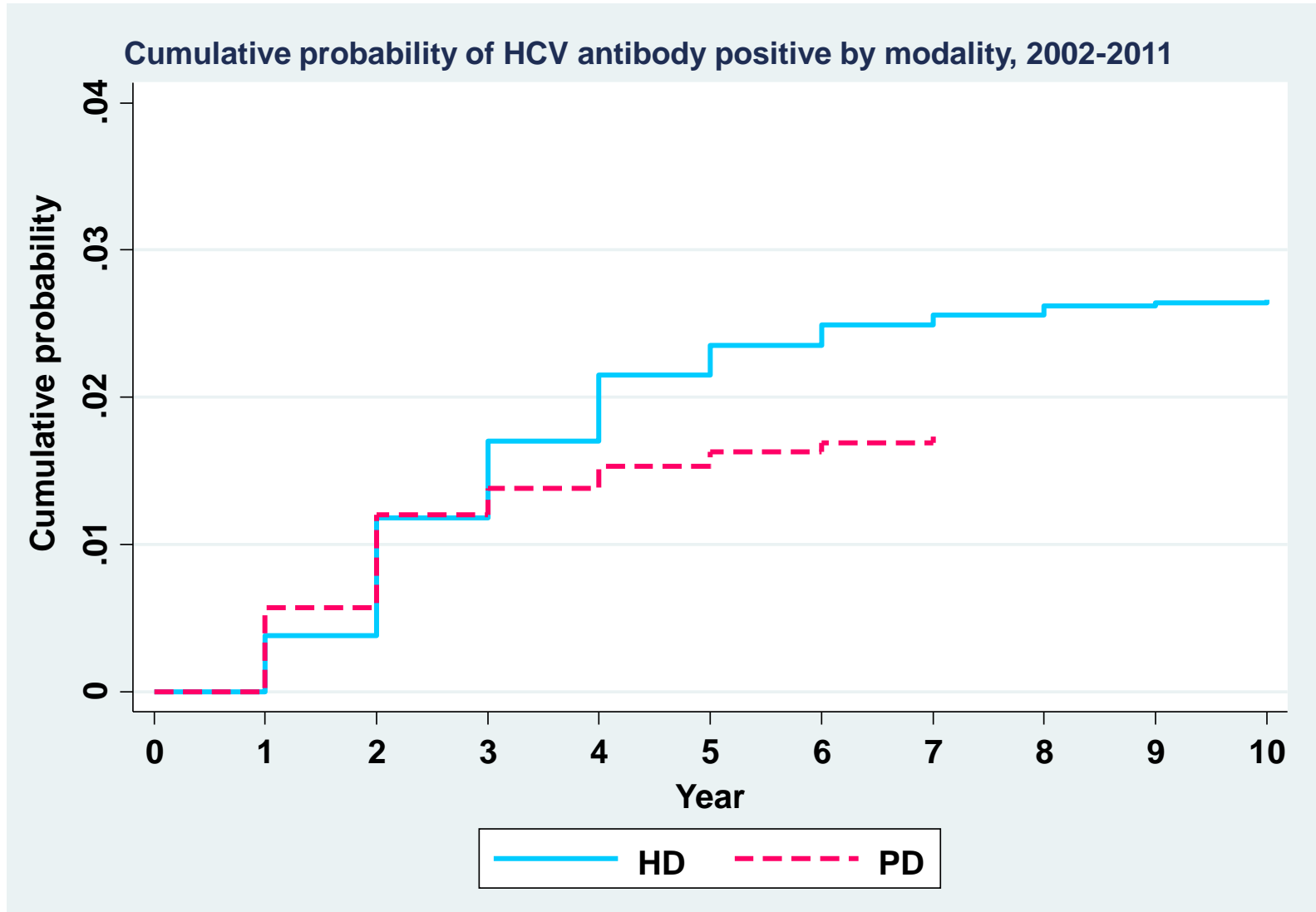


Table 10.8(a): Risk factors in relation to HD practices for seroconversion to anti-HCV positive among sero-negative patients 2002-2011

Risk factor		Number of patients	Risk Ratio	95% CI	p-value
Assistance to Perform HD	Self care (ref*)	93	1.00		
	Partial self care	95	1.02	(0.76;1.37)	0.879
	Completely assisted	603	1.13	(0.9;1.42)	0.297
Dialyzer Reuse	less than 10 (ref*)	460	1.00		
	more than 10	325	0.46	(0.39;0.53)	<0.001
Dialyzer Reprocessing System	Fully Auto (ref*)	570	1.00		
	Semi Auto	77	1.36	(1.07;1.72)	0.012
	Manual	62	1.62	(1.25;2.11)	<0.001
Age	<=20 (ref*)	6	1.00		
	21-40	86	1.42	(0.62;3.22)	0.406
	41-60	345	1.57	(0.7;3.52)	0.275
	>60	358	1.58	(0.7;3.57)	0.267
Gender	Female (ref*)	324	1.00		
	Male	471	1.19	(1.03;1.39)	0.414
Diabetes	No (ref*)	360	1.00		
	Yes	435	0.87	(0.75;1.02)	0.081
Previous Renal Transplant	No (ref*)	769	1.00		
	Yes	26	2.06	(1.37;3.09)	0.001
History of Blood Transfusion	No (ref*)	452	1.00		
	Yes	343	1.40	(1.21;1.62)	<0.001

Table 10.8(b): Risk factors for seroconversion to anti-HCV positive among sero-negative patients in PD 2002-2011

Risk factor		Number of patients	Risk Ratio	95% CI	p-value
Age	<=20 (ref*)	5	1.00		
	21-40	20	1.78	(0.67;4.7)	0.248
	41-60	41	1.63	(0.63;4.19)	0.311
	>60	19	0.78	(0.29;2.15)	0.637
Gender	Female (ref*)	35	1.00		
	Male	50	1.55	(1.01;2.38)	0.046
Diabetes	No (ref*)	60	1.00		
	Yes	25	0.71	(0.44;1.15)	0.167
Switch from HD to PD	No (ref*)	57	1.00		
	Yes	28	2.27	(1.41;3.67)	0.001
Previous Renal Transplant	No (ref*)	85	1.00		
	Yes	0	0.00	-	-
History of Blood Transfusion	No (ref*)	41	1.00		
	Yes	44	1.46	(0.95;2.25)	0.087