

CHAPTER 4

Quality Of Life and Rehabilitation Outcomes of Patients on Dialysis

Liu Wen Jiun

Chew Thian Fook

Christopher Lim Thiam Seong

Zaki Morad B Mohd Zaher

Table 4.1: Cumulative distribution of QoL-Index score in relation to dialysis modality, all dialysis patients 2002-2011

<i>Dialysis modality</i>	<i>PD</i>	<i>HD</i>
Number of patients	2028	17668
Centile		
0	0	0
0.05	5	5
0.1	6	5
0.25 (LQ)	8	7
0.5 (median)	10	9
0.75 (UQ)	10	10
0.9	10	10
0.95	10	10
1	10	10

Figure 4.1: Cumulative distribution of QoL-Index score in relation to dialysis modality, all dialysis patients 2002-2011

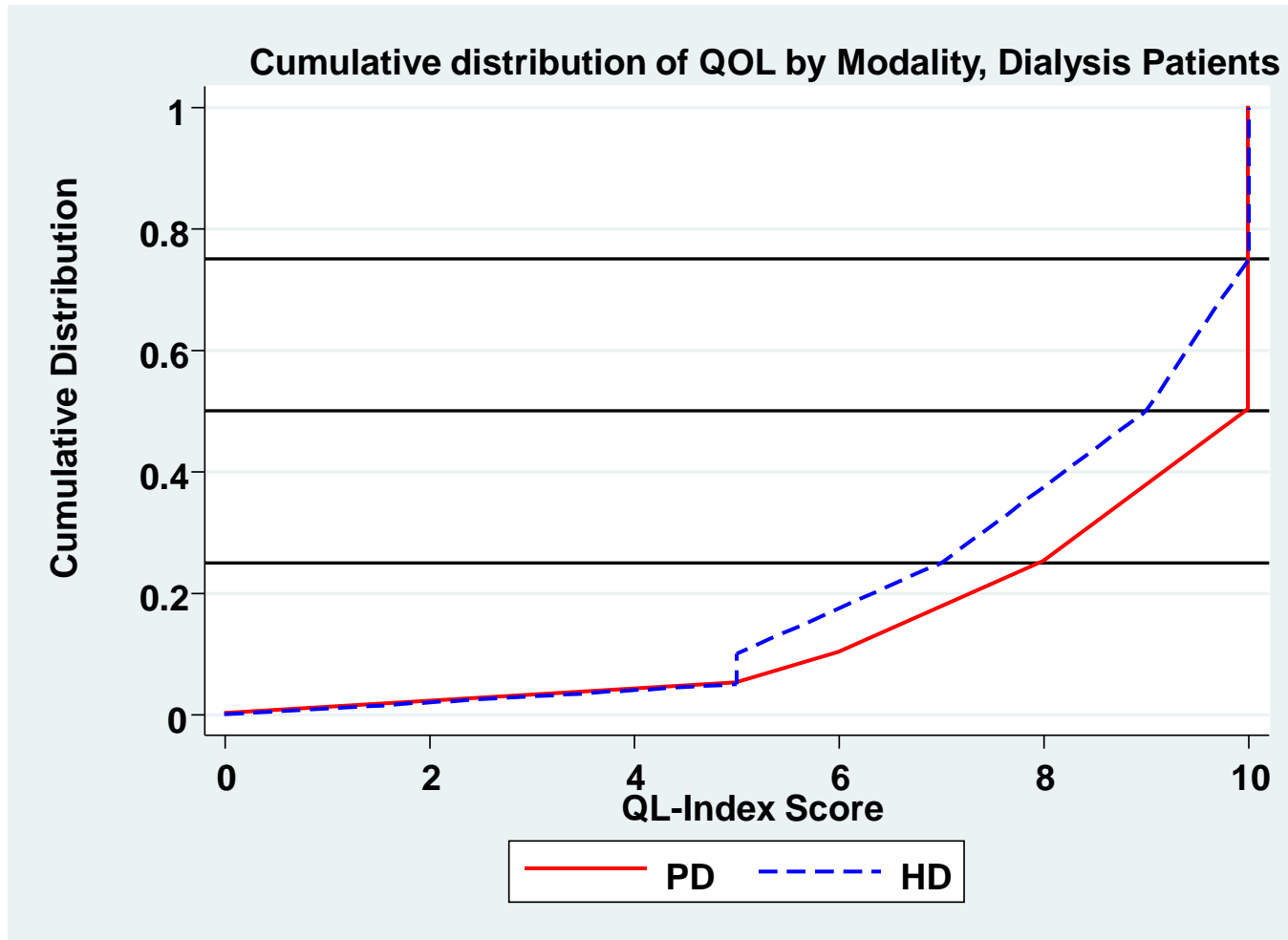


Table 4.2: Cumulative distribution of QoL-Index score in relation to DM, all dialysis patients 2002-2011

<i>Diabetes mellitus</i>	<i>No</i>	<i>Yes</i>
Number of patients	10291	9405
Centile		
0	0	0
0.05	5	4
0.1	6	5
0.25 (LQ)	8	7
0.5 (median)	10	9
0.75 (UQ)	10	10
0.9	10	10
0.95	10	10
1	10	10

Figure 4.2: Cumulative distribution of QoL-Index score in relation to DM, All Dialysis patients, 2002-2011

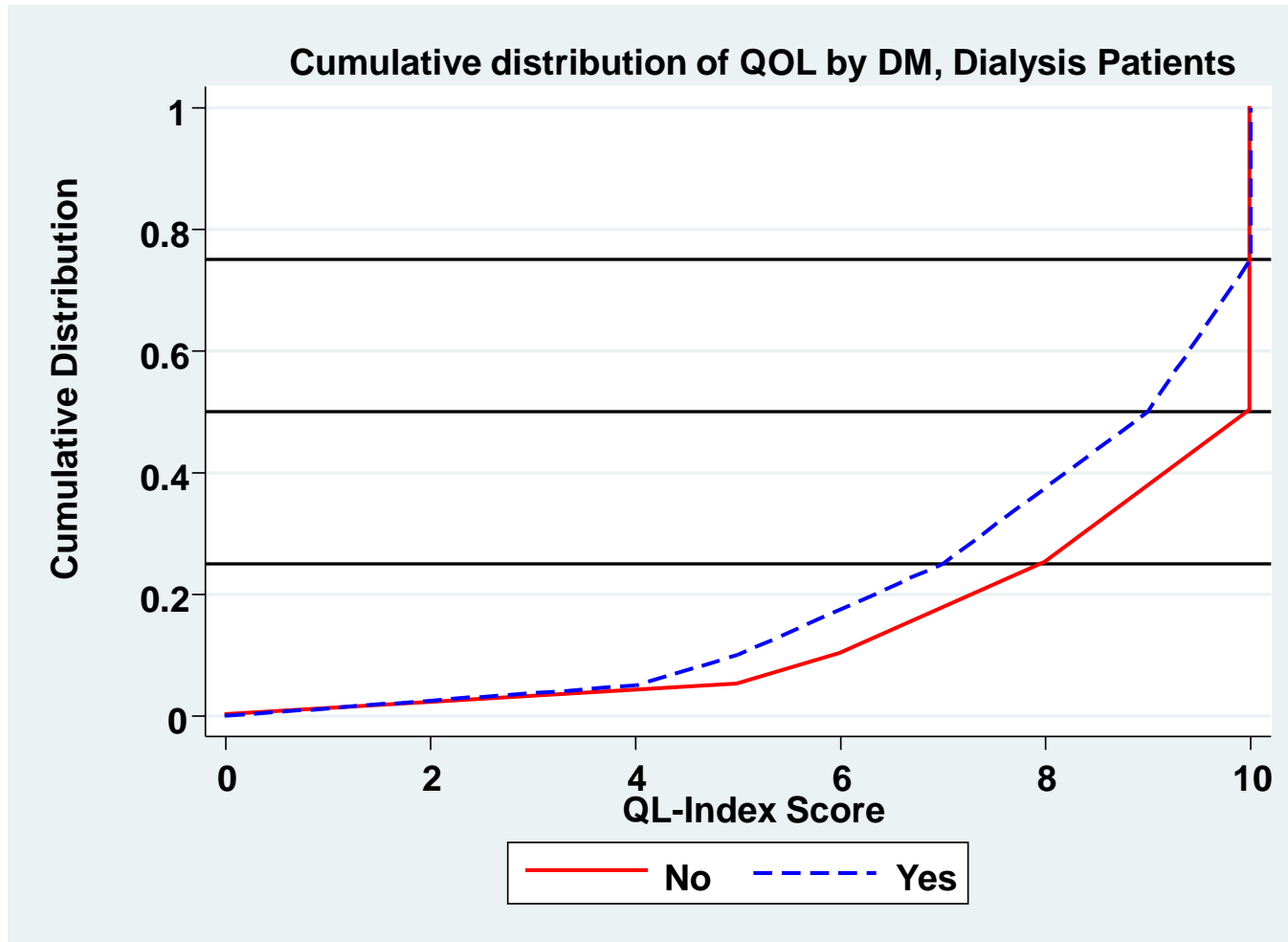


Table 4.3: Cumulative distribution of QoL-index score in relation to gender, all dialysis patients 2002-2011

<i>Gender</i>	<i>Male</i>	<i>Female</i>
Number of patients	10788	8908
Centile		
0	0	0
0.05	5	5
0.1	6	5
0.25 (LQ)	8	7
0.5 (median)	10	9
0.75 (UQ)	10	10
0.9	10	10
0.95	10	10
1	10	10

Figure 4.3: Cumulative distribution of QoL-Index score in relation to gender, all dialysis patients, 2002-2011

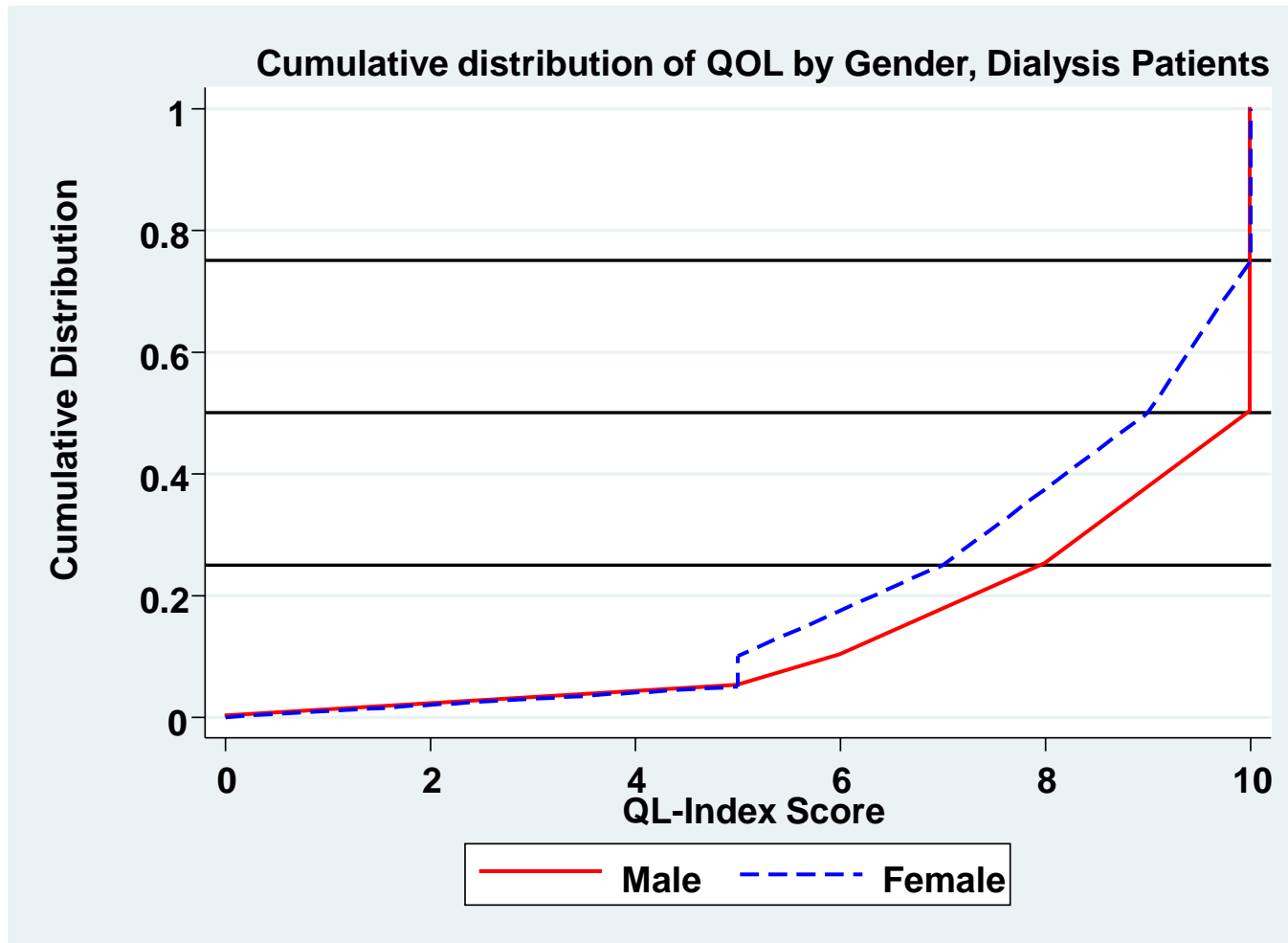


Table 4.4: Cumulative distribution of QoL-index score in relation to age, all dialysis patients 2002-2011

Age group (years)	<20	20-39	40-59	≥60
Number of patients	542	3357	9651	6146
Centile				
0	0	0	0	0
0.05	6	6	5	4
0.1	7	7	6	5
0.25 (LQ)	9	9	8	6
0.5 (median)	10	10	10	8
0.75 (UQ)	10	10	10	10
0.9	10	10	10	10
0.95	10	10	10	10
1	10	10	10	10

Figure 4.4: Cumulative distribution of QoL-Index score in relation to age, all dialysis patients, 2002-2011

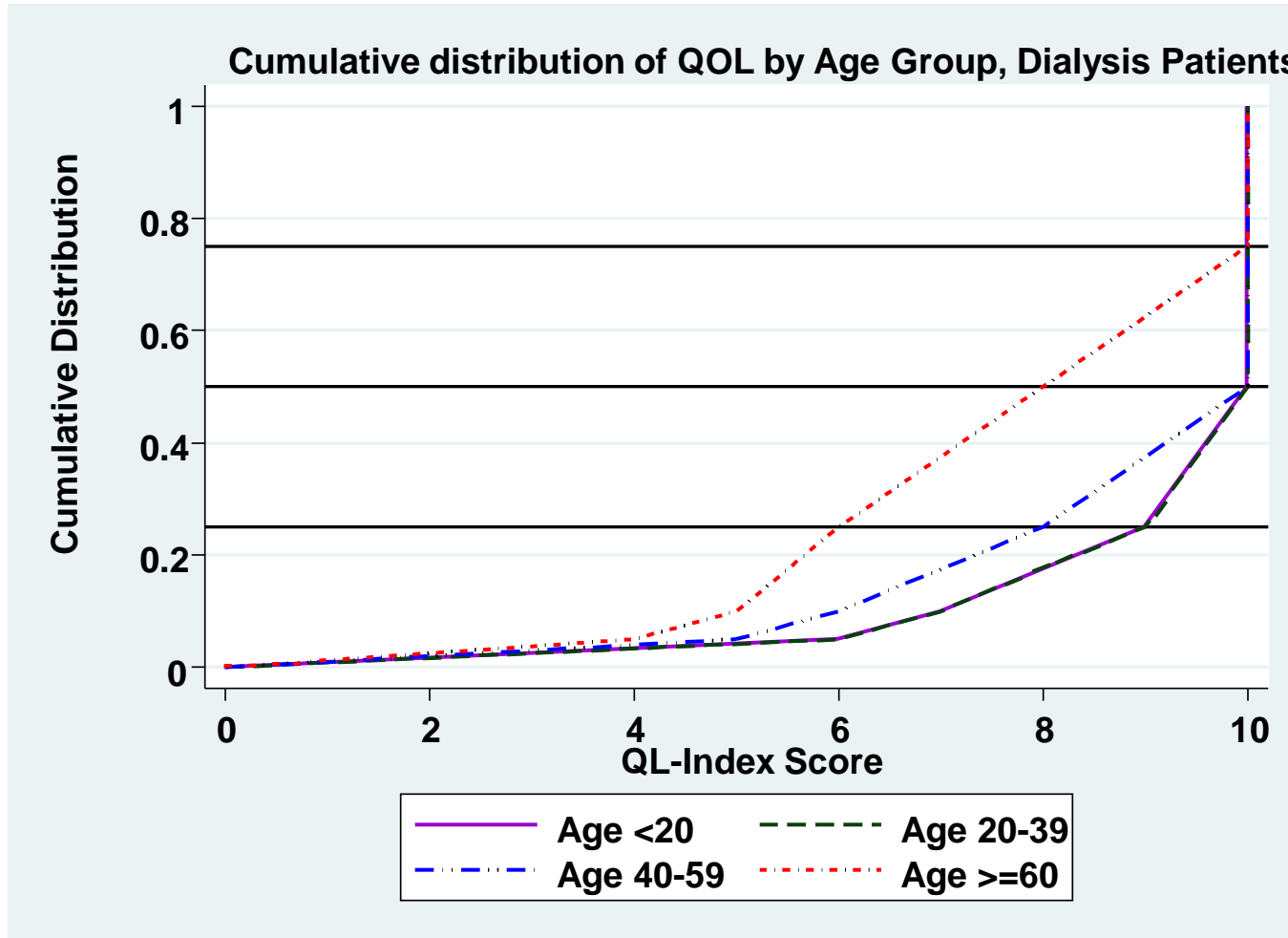


Table 4.5: Cumulative distribution of QoL-Index score in relation to year of entry, HD patients 2002-2011

<i>Year of Entry</i>	<i>2002</i>	<i>2003</i>	<i>2004</i>	<i>2005</i>	<i>2006</i>	<i>2007</i>	<i>2008</i>	<i>2009</i>	<i>2010</i>	<i>2011</i>
Number of patients	567	697	901	1108	1521	1795	2330	2785	3118	2846
Centile										
0	0	0	0	0	0	0	0	0	0	0
0.05	6	5	5	5	5	5	5	5	4	4
0.1	7	6	6	6	6	6	6	5	5	5
0.25 (LQ)	9	8	8	8	8	8	8	7	7	7
0.5 (median)	10	10	10	10	10	10	9	9	9	9
0.75 (UQ)	10	10	10	10	10	10	10	10	10	10
0.9	10	10	10	10	10	10	10	10	10	10
0.95	10	10	10	10	10	10	10	10	10	10
1	10	10	10	10	10	10	10	10	10	10

Figure 4.5: Cumulative distribution of QoL-Index score in relation to year of entry, HD patients 2002-2011

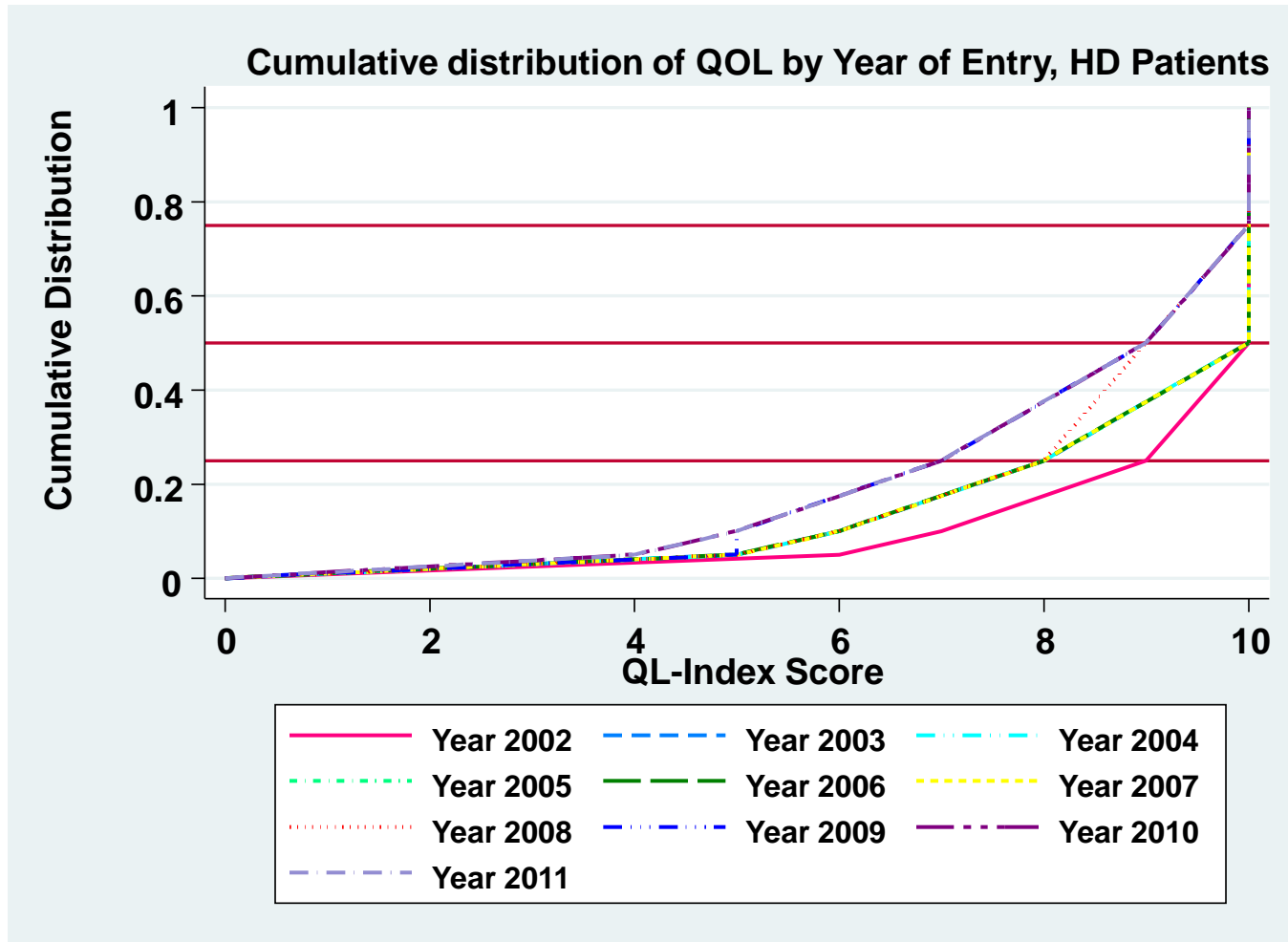


Table 4.6: Cumulative distribution of QoL-Index score in relation to year of entry, PD patients 2002-2011

<i>Year of Entry</i>	<i>2002</i>	<i>2003</i>	<i>2004</i>	<i>2005</i>	<i>2006</i>	<i>2007</i>	<i>2008</i>	<i>2009</i>	<i>2010</i>	<i>2011</i>
Number of patients	25	43	50	65	100	159	225	349	420	592
Centile										
0	0	0	0	0	0	0	0	0	0	0
0.05	9	9	8	6	7	6	7	5	5	5
0.1	10	9	9	8	8	7	7	6	6	6
0.25 (LQ)	10	10	10	10	10	9	9	8	7	8
0.5 (median)	10	10	10	10	10	10	10	10	10	10
0.75 (UQ)	10	10	10	10	10	10	10	10	10	10
0.9	10	10	10	10	10	10	10	10	10	10
0.95	10	10	10	10	10	10	10	10	10	10
1	10	10	10	10	10	10	10	10	10	10

Figure 4.6: Cumulative distribution of QoL-Index score in relation to year of entry, PD patients 2002-2011

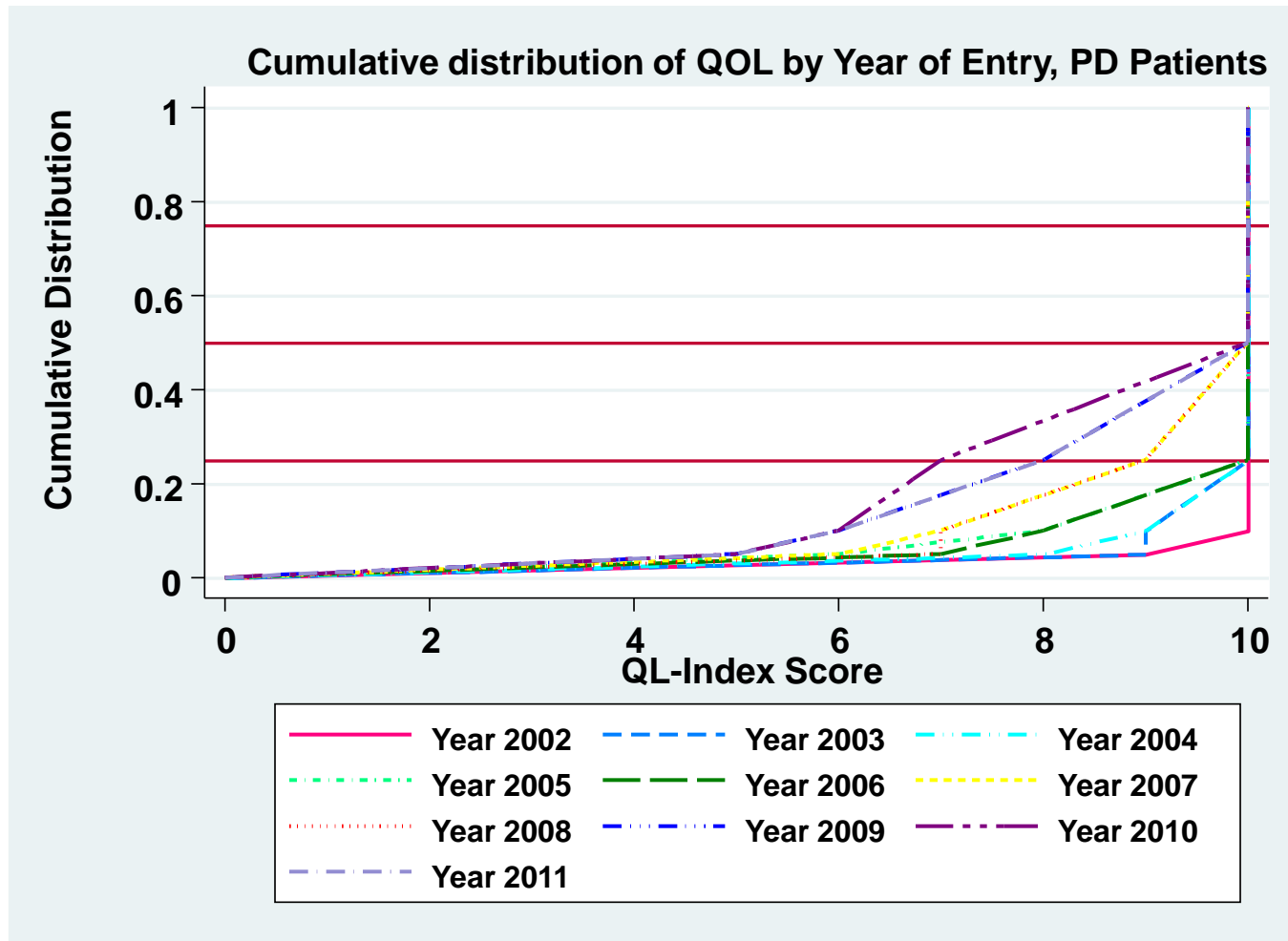


Table 4.7: Work related rehabilitation in relation to modality, dialysis patients, 2002 to 2011

Modality	PD		HD	
	n	%	n	%
Number of patients	1493		9952	
Able to return for Full or Part time for pay*	1055	71	6816	68
Unable to work for pay	438	29	3136	32

Table 4.8 Work related rehabilitation in relation to year of entry, HD patients 2002 to 2011

Year		2002	2003	2004	2005	2006	2007	2008	2009	2010	2011
Number of patients		724	745	872	884	1049	1070	1281	1233	1212	882
Able to return for Full or Part time for pay*	n	542	550	629	629	751	750	861	820	765	519
	%	75	74	72	71	72	70	67	67	63	59
Unable to work for pay	n	182	195	243	255	298	320	420	413	447	363
	%	25	26	28	29	28	30	33	33	37	41

Table 4.9 Work related rehabilitation in relation to year of entry, PD patients 2002 to 2011

Year		2002	2003	2004	2005	2006	2007	2008	2009	2010	2011
Number of patients		120	143	103	117	147	170	190	160	166	177
Able to return for Full or Part time for pay*	n	90	111	73	85	104	118	135	104	109	126
	%	75	78	71	73	71	69	71	65	66	71
Unable to work for pay	n	30	32	30	32	43	52	55	56	57	51
	%	25	22	29	27	29	31	29	35	34	29