

CHAPTER 4

Quality of Life and Rehabilitation Outcomes of Patients on Dialysis

Liu Wen Jiun

Christopher Lim Thiam Seong

Esther Tan Zhao Zhi

Tan Wee Ming

Yia @ Yeow Hua Jern

SECTION A: QoL INDEX SCORE

31461 dialysis patients who were alive at 31st December 2015 and entered dialysis between 2006-2015 were analysed. 28032 HD patients and 3429 PD patients both reported median QoL index score of 9 and 10 respectively (Table & Figure 4.1) Diabetics have a lower median QoL index score than non-diabetics (8 versus 10) (Table & Figure 4. 2). Females and males had comparative median QoL core of 9 (Table & Figure 4.3). Lower median QoL index score of 8 was found in >60 years old age group (Table & Figure 4.4). Lower median QoL index score of 9 was seen in HD patients entering at 2009-2015 compared to 10 in those entering at 2006-2008 (Table & Figure 4.5). For PD patients, the median QoL index score remains consistently 10 for all entering at 2006-2014 (Table & Figure 4.6).

Table 4.1: Cumulative distribution of QoL-Index score in relation to dialysis modality, all dialysis patients 2006– 2015

Dialysis modality	PD	HD
Number of patients	3429	28032
Centile		
0	0	0
0.05	5	5
0.1	6	5
0.25 (LQ)	8	7
0.5 (median)	10	9
0.75 (UQ)	10	10
0.9	10	10
0.95	10	10
1	10	10

Figure 4.1: Cumulative distribution of QoL-Index score in relation to dialysis modality, all dialysis patients 2006-2015

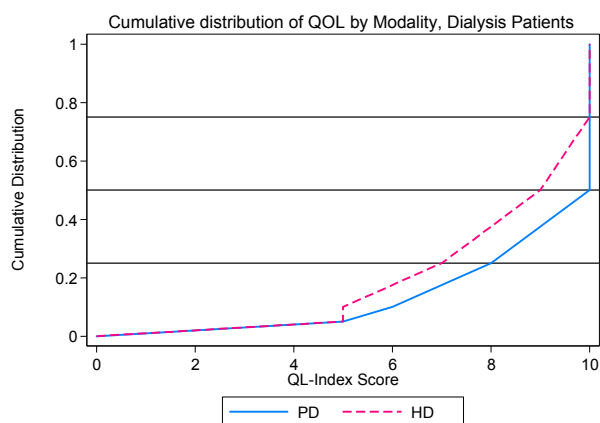


Table 4.2: Cumulative distribution of QoL-Index score in relation to DM, all dialysis patients 2006-2015

Diabetes mellitus	No	Yes
Number of patients	16971	14490
Centile		
0	0	0
0.05	5	4
0.1	6	5
0.25 (LQ)	8	7
0.5 (median)	10	8
0.75 (UQ)	10	10
0.9	10	10
0.95	10	10
1	10	10

Figure 4.2: Cumulative distribution of QoL-Index score in relation to DM, All Dialysis patients, 2006-2015

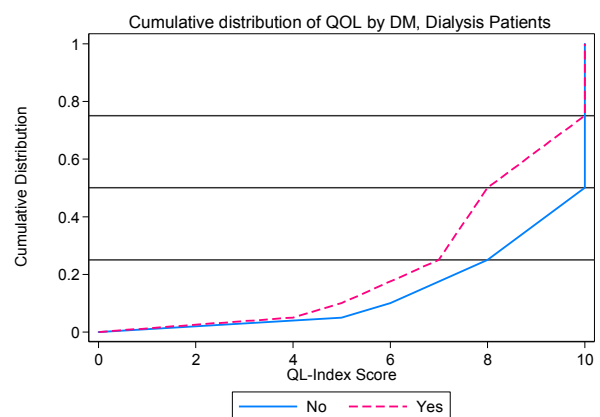


Table 4.3: Cumulative distribution of QoL-index score in relation to gender, all dialysis patients 2006-2015

Gender	Male	Female
Number of patients	17308	14153
Centile		
0	0	0
0.05	5	4
0.1	6	5
0.25 (LQ)	8	7
0.5 (median)	9	9
0.75 (UQ)	10	10
0.9	10	10
0.95	10	10
1	10	10

Table 4.4: Cumulative distribution of QoL-index score in relation to age, all dialysis patients 2006-2015

Age group (years)	<20	20-39	40-59	>=60
Number of patients	653	4991	15236	10581
Centile				
0	0	0	0	0
0.05	6	6	5	4
0.1	7	7	6	5
0.25 (LQ)	8	9	8	6
0.5 (median)	10	10	10	8
0.75 (UQ)	10	10	10	10
0.9	10	10	10	10
0.95	10	10	10	10
1	10	10	10	10

Figure 4.3: Cumulative distribution of QoL-Index score in relation to gender, all dialysis patients, 2006-2015

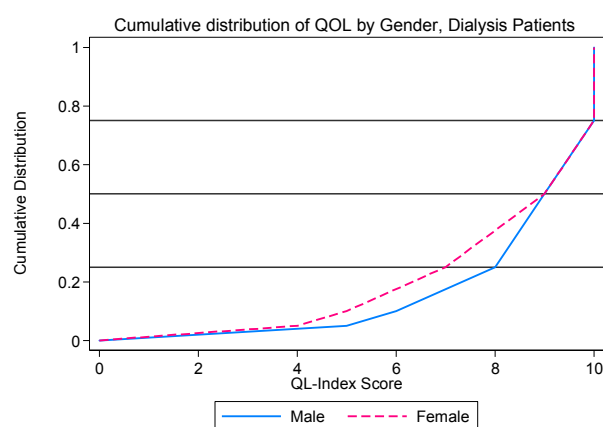


Figure 4.4: Cumulative distribution of QoL-Index score in relation to age, all dialysis patients, 2006-2015

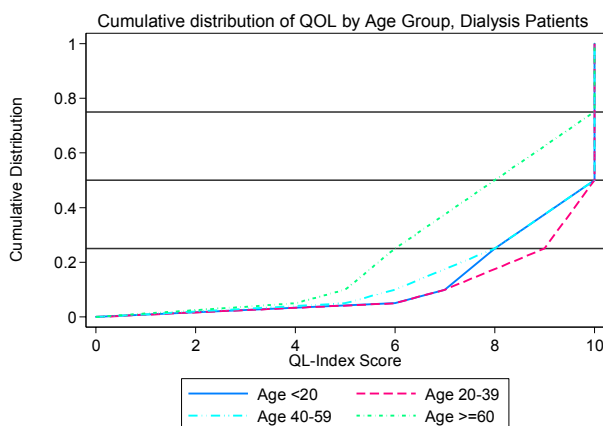


Table 4.5: Cumulative distribution of QoL-Index score in relation to year of entry, HD patients 2006-2015

Year of Entry	2006	2007	2008	2009	2010	2011	2012	2013	2014	2015
Number of patients	885	1086	1397	1796	2208	2871	3571	4315	5031	4872
Centile										
0	0	0	0	0	0	0	0	0	0	0
0.05	5	5	5	5	5	5	5	4	4	4
0.1	6	6	6	6	6	6	5	5	5	5
0.25 (LQ)	8	8	8	8	7	7	7	7	7	7
0.5 (median)	10	10	10	9	9	9	9	9	9	9
0.75 (UQ)	10	10	10	10	10	10	10	10	10	10
0.9	10	10	10	10	10	10	10	10	10	10
0.95	10	10	10	10	10	10	10	10	10	10
1	10	10	10	10	10	10	10	10	10	10

Figure 4.5: Cumulative distribution of QoL-Index score in relation to year of entry, HD patients 2006-2015

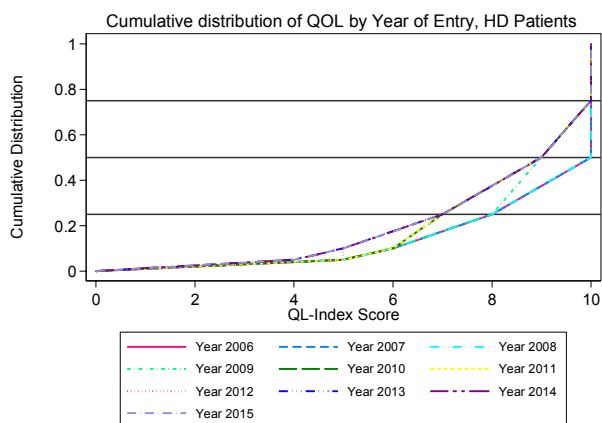


Figure 4.6: Cumulative distribution of QoL-Index score in relation to year of entry, PD patients 2006-2015

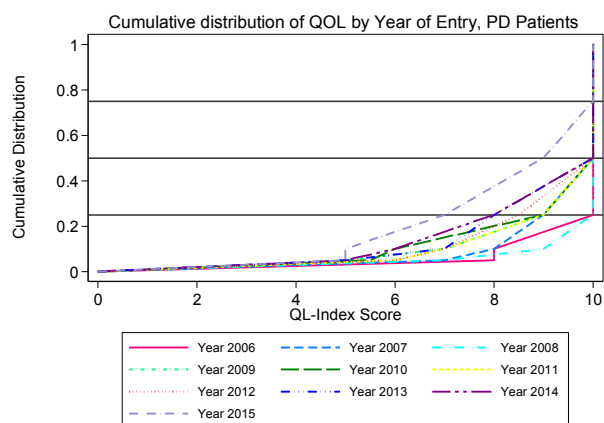


Table 4.6: Cumulative distribution of QoL-Index score in relation to year of entry, PD patients 2006-2015

Year of Entry	2006	2007	2008	2009	2010	2011	2012	2013	2014	2015
Number of patients	27	41	59	105	120	215	372	539	847	1104
Centile										
0	0	0	0	0	0	0	0	0	0	0
0.05	8	7	7	5	5.5	6	6	5	5	5
0.1	8	8	9	7	6	7	7	7	6	5
0.25 (LQ)	10	9	10	9	9	9	8.5	8	8	7
0.5 (median)	10	10	10	10	10	10	10	10	10	9
0.75 (UQ)	10	10	10	10	10	10	10	10	10	10
0.9	10	10	10	10	10	10	10	10	10	10
0.95	10	10	10	10	10	10	10	10	10	10
1	10	10	10	10	10	10	10	10	10	10

SECTION B: WORK RELATED REHABILITATION

Analysis was done on HD patients (n=16963) and PD patients (n=1615) who entered dialysis between 2006-2015 (Table 4.7). Only patients who are working for pay and those who are unable to work for pay due to health reasons are included. HD group has the same proportion of patients on employment compared to PD group (HD 66% vs PD 66%).

Amongst HD patients, the proportion on employment was 79% in those who began dialysis in 2006. Percentage of employment fell steadily each year to 55% in 2015 (Table 4.8). This may be confounded by the healthier HD patients who survived longer and therefore spuriously increased the proportion on employment. In the PD cohort, no specific trend of employment seen over the last 10 years (Table 4.9).

Table 4.7: Work related rehabilitation in relation to modality, dialysis patients, 2006-2015

Modality	PD		HD	
	n	%	n	%
Number of patients	1615		16963	
Able to return for Full or Part time for pay*	1064	66	11127	66
Unable to work for pay	551	34	5836	34

Table 4.8: Work related rehabilitation in relation to year of entry, HD patients 2006-2015

Year	2006	2007	2008	2009	2010	2011	2012	2013	2014	2015	
Number of patients	690	802	1036	1227	1538	1878	2210	2532	2733	2317	
Able to return for Full or Part time for pay*	n	544	602	762	900	1090	1299	1480	1627	1557	1266
	%	79	75	74	73	71	69	67	64	57	55
Unable to work for pay	n	146	200	274	327	448	579	730	905	1176	1051
	%	21	25	26	27	29	31	33	36	43	45

*analysis based on living patient only (alive as at 31/12/2015)

Table 4.9: Work related rehabilitation in relation to year of entry, PD patients 2006-2015

Year	2006	2007	2008	2009	2010	2011	2012	2013	2014	2015	
Number of patients	16	20	38	65	71	123	193	263	388	438	
Able to return for Full or Part time for pay*	n	14	18	31	43	58	89	138	168	245	
	%	88	90	82	66	82	72	72	64	67	56
Unable to work for pay	n	2	2	7	22	13	34	55	95	128	193
	%	13	10	18	34	18	28	28	36	33	44

*analysis based on living patient only (alive as at 31/12/2015)