

Table 11.1: Prevalence of HBsAg positive, Anti-HCV positive and Mixed infection at notification to the registry, HD patients 1993-2002

Year	N	Prevalence of HBsAg positive (%)	Prevalence of Anti-HCV positive (%)	Prevalence of mixed HBsAg positive and Anti-HCV positive (%)
1993	312	5.77	17.63	1.92
1994	445	6.52	15.73	0.45
1995	567	6.70	13.58	1.23
1996	789	4.44	14.45	0.51
1997	1019	4.42	10.21	0.39
1998	1144	4.55	9.27	0.35
1999	1399	5.08	7.86	0.36
2000	1668	5.16	4.98	0.42
2001	1757	4.38	4.04	0.11
2002	1527	3.27	3.34	0.26

Table 11.2: Prevalence of HBsAg positive, Anti-HCV positive and Mixed infection at notification to the registry, CAPD patients 1993-2002

Year	N	Prevalence of HBsAg positive (%)	Prevalence of Anti-HCV positive (%)	Prevalence of mixed HBsAg positive and Anti-HCV positive (%)
1993	69	1.45	5.80	0
1994	121	1.65	4.13	0
1995	170	5.29	4.71	0
1996	220	3.18	2.27	0
1997	197	3.05	5.58	1.52
1998	154	0	3.25	0
1999	209	1.44	3.83	0
2000	226	3.54	4.42	0
2001	339	4.42	3.54	0.59
2002	346	3.76	3.18	0.58

Table 11.3: Prevalence of HBsAg positive, Anti-HCV positive and Mixed infection at annual survey, HD patients 1993-2002

Year	N	Prevalence of HBsAg positive (%)	Prevalence of Anti-HCV positive (%)	Prevalence of mixed HBsAg positive and Anti-HCV positive (%)
1993	718	8	17	1
1994	962	6	26	1
1995	1033	5	30	1
1996	1254	7	25	2
1997	1696	6	23	1
1998	2141	6	22	1
1999	2995	6	23	1
2000	4393	6	25	1
2001	5193	6	23	1
2002	5673	5	21	1

Table 11.4: Prevalence of HBsAg positive, Anti-HCV positive and Mixed infection at annual survey, CAPD patients 1993-2002

Year	N	Prevalence of HBsAg positive (%)	Prevalence of Anti-HCV positive (%)	Prevalence of mixed HBsAg positive and Anti-HCV positive (%)
1993	102	1	0	0
1994	122	3	1	0
1995	256	4	2	0
1996	371	4	6	0
1997	477	3	5	0
1998	541	3	6	0
1999	610	2	5	0
2000	661	2	5	0
2001	780	2	3	0
2002	889	3	4	0

Table 11.5: Cumulative risk of sero-conversion to HBsAg positive among sero-negative patients at entry into dialysis, comparing HD and CAPD 1997-2002

Modality	CAPD		HD	
Interval (years)	% Cumulative probability	SE*	% Cumulative probability	SE*
1	0.3	0.1	0.3	0.06
2	0.6	0.2	0.7	0.1
3	1.5	0.4	1.1	0.1
4	1.9	0.6	1.4	0.2
5	1.9	0.6	1.5	0.2

\* SE=standard error

Figure 11.5: Cumulative risk of sero-conversion to HBsAg positive among sero-negative patients at entry into dialysis, comparing HD and CAPD 1997-2002

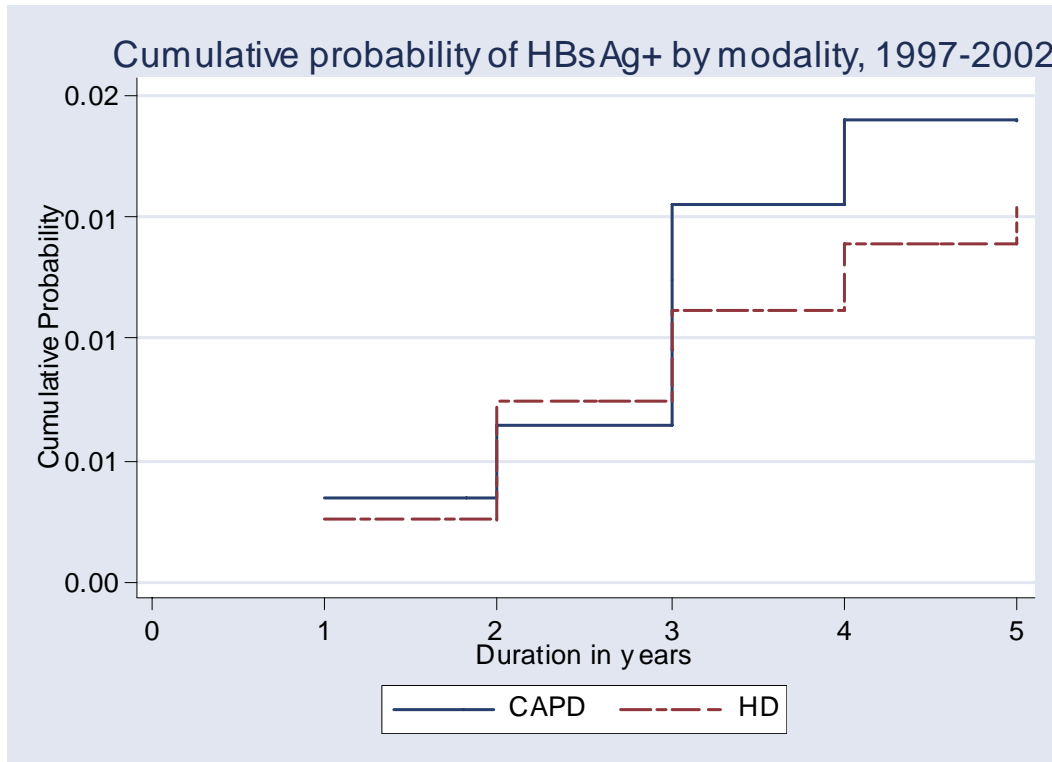


Table 11.6: Risk factors for sero-conversion to HBsAg positive among sero-negative patients at entry into dialysis, All dialysis patients 1997-2002

Factors	N	Risk ratio	95% CI	P value
Gender:				
Male (ref.*)	5269	1.00		
Female	4290	0.74	(0.60,1.39)	0.675
Age:				
<20 (ref.*)	367	1.00		
20-39	1802	0.90	(0.30,2.72)	0.848
40-54	3264	0.77	(0.26,2.30)	0.635
>=55	4126	0.74	(0.25,2.26)	0.601
Diabetes mellitus				
No (ref.*)	5516	1.00		
Yes	4043	1.32	(0.83,2.09)	0.243
Year start dialysis				
1997-1998 (ref.*)	2411	1.00		
1999-2000	3334	0.88	(0.56,1.40)	0.596
2001-2002	3814	0.55	(0.28,1.08)	0.082
Modality:				
CAPD (ref.*)	1426	1.00		
HD	8133	0.84	(0.47,1.52)	0.566

\*ref: Reference group

Table 11.7: Cumulative risk of sero-conversion to Anti-HCV positive among sero-negative patients at entry into dialysis, comparing HD and CAPD 1997-2002

Modality	CAPD		HD	
Interval (years)	% Cumulative probability	SE*	% Cumulative probability	SE*
0.5				
1	1.1	0.3	1.2	0.1
2	2.1	0.4	4.9	0.3
3	2.6	0.5	9.3	0.4
4	3.7	0.8	13.0	0.6
5	4.4	1.1	15.0	0.7

\* SE=standard error



Figure 11.7: Cumulative risk of sero-conversion to Anti-HCV positive among sero-negative patients at entry into dialysis, comparing HD and CAPD 1997-2002

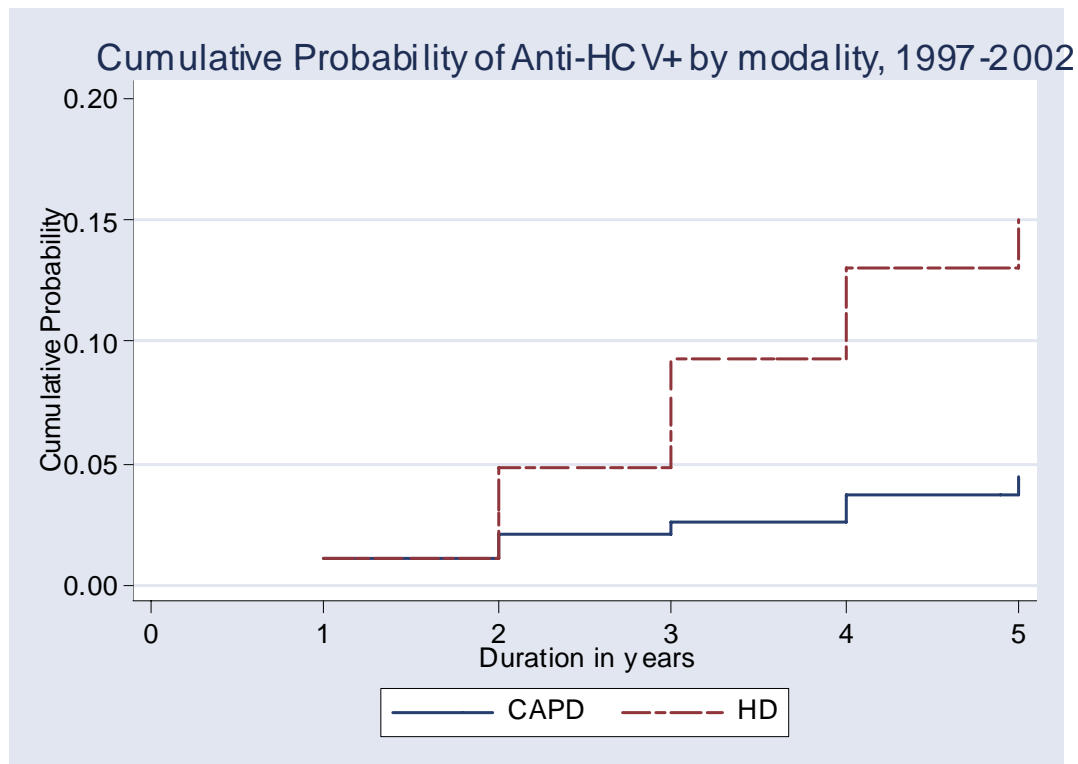


Table 11.8: Risk factors for sero-conversion to Anti-HCV positive among sero-negative patients at entry into dialysis, All dialysis patients 1997-2002

Factors	N	Risk ratio	95% CI	P value
Gender:				
Male (ref.*)	5189	1.00		
Female	4214	0.84	(0.71,0.99)	0.033
Age:				
<20 (ref.*)	363	1.00		
20-39	1764	0.96	(0.57,1.64)	0.891
40-54	3222	1.22	(0.72,2.04)	0.461
>=55	4054	1.01	(0.60,1.71)	0.974
Diabetes mellitus				
No (ref.*)	5420	1.00		
Yes	3983	0.89	(0.74,1.05)	0.170
Year start dialysis				
1997-1998 (ref.*)	2288	1.00		
1999-2000	3291	1.23	(1.02,1.48)	0.025
2001-2002	3824	1.12	(0.86,1.46)	0.393
Modality:				
CAPD (ref.*)	1414	1.00		
HD	7989	2.66	(1.86,3.80)	0.000

\*ref: Reference group