

Table .13.01: Blood Flow Rates in HD Units 1994– 2002

Blood flow rates	1994		1995		1996		1997			
	No.	%	No.	%	No.	%	No.	%		
<150 ml/min	2	0	2	0	1	0	2	0		
150-199 ml/min	30	3	24	2	20	2	34	2		
200-249 ml/min	575	62	604	61	605	50	650	40		
250-299 ml/min	288	31	297	30	484	40	735	46		
300-349 ml/min	28	3	62	6	82	7	176	11		
>=350 ml/min	4	0	7	1	9	1	18	1		
Total	927	100	996	100	1201	100	1615	100		
Blood flow rates	1998		1999		2000		2001		2002	
	No.	%	No.	%	No.	%	No.	%	No.	%
<150 ml/min	4	0	6	0	9	0	7	0	9	0
150-199 ml/min	36	2	65	2	85	2	69	1	63	1
200-249 ml/min	735	35	963	33	1283	30	1234	25	917	17
250-299 ml/min	969	47	1368	47	1940	46	2230	44	2502	46
300-349 ml/min	298	14	455	16	814	19	1276	25	1486	27
>=350 ml/min	30	1	31	1	94	2	216	4	479	9
Total	2072	100	2888	100	4225	100	5032	100	5456	100

Table .13.02: Number of HD Sessions per week, HD Units 1994 – 2002

HD sessions Per week	1994		1995		1996		1997			
	No.	%	No.	%	No.	%	No.	%		
1	3	0	1	0	0	0	1	0		
2	23	2	5	0	6	0	6	0		
3	923	97	1015	99	1226	99	1666	99		
4	2	0	3	0	8	1	9	1		
Total			951	100	1024	100	1240	100	1682	100
HD sessions Per week	1998		1999		2000		2001		2002	
	No.	%	No.	%	No.	%	No.	%	No.	%
1	1	0	4	0	8	0	8	0	9	0
2	5	0	153	5	341	8	337	7	325	6
3	2111	100	2813	95	3985	91	4763	92	5250	94
4	2	0	3	0	10	0	50	1	17	0
Total	2119	100	2973	100	4356	100	5161	100	5604	100

Table .13.03: Duration of HD in HD Units 1994 – 2002

Duration of HD per session	1994		1995		1996		1997	
	No.	%	No.	%	No.	%	No.	%
<=3 hours	5	1	0	0	2	0	7	0
-3.5 hours	5	1	4	0	1	0	3	0
-4 hours	924	97	1009	98	1199	97	1595	95
-4.5 hours	4	0	7	1	30	2	70	4
-5 hours	12	1	4	0	8	1	8	0
>5 hours	2	0	1	0	0	0	1	0
Total	952	100	1025	100	1240	100	1684	100

Duration of HD per session	1998		1999		2000		2001		2002	
	No.	%	No.	%	No.	%	No.	%	No.	%
<=3 hours	3	0	4	0	8	0	6	0	18	0
-3.5 hours	18	1	9	0	12	0	33	1	15	0
-4 hours	1994	94	2737	92	4056	93	4958	96	5454	97
-4.5 hours	91	4	160	5	189	4	106	2	63	1
-5 hours	8	0	61	2	77	2	59	1	46	1
>5 hours	3	0	0	0	13	0	0	0	0	0
Total	2117	100	2971	100	4355	100	5162	100	5596	100

Table 13.04: Dialyser membrane types in HD Units 1994 – 2002

Dialyser membrane	1994		1995		1996		1997			
	No.	%	No.	%	No.	%	No.	%		
Cellulosic	718	76	792	80	932	78	1149	73		
Cellulose acetate	222	23	183	19	235	20	360	23		
Synthetic	10	1	14	1	34	3	74	5		
Total	950	100	989	100	1201	100	1583	100		
Dialyser membrane	1998		1999		2000		2001		2002	
	No.	%	No.	%	No.	%	No.	%	No.	%
Cellulosic	1077	57	987	46	1270	40	1145	31	858	19
Cellulose acetate	413	22	489	23	504	16	493	13	740	17
Synthetic	413	22	672	31	1415	44	2022	55	2826	64
Total	1903	100	2148	100	3189	100	3660	100	4424	100

Table 13.05: Dialyser Reuse Frequency in HD Units 1994- 2002

Dialyser reuse Frequency	1994		1995		1996		1997	
	No.	%	No.	%	No.	%	No.	%
1*	13	1	15	2	19	2	21	1
2	9	1	7	1	10	1	9	1
3	582	64	751	77	761	67	998	63
4	188	21	153	16	175	16	174	11
5	84	9	22	2	121	11	194	12
6	37	4	18	2	31	3	154	10
7	0	0	0	0	0	0	2	0
8	2	0	0	0	1	0	4	0
9	1	0	4	0	10	1	30	2
10	0	0	0	0	0	0	0	0
11	0	0	0	0	0	0	0	0
12	0	0	0	0	0	0	0	0
>=13	0	0	0	0	0	0	0	0
Total	916	100	970	100	1128	100	1586	100

Dialyser reuse	1998		1999		2000		2001		2002	
Frequency	No.	%	No.	%	No.	%	No.	%	No.	%
1*	16	1	65	2	117	3	152	3	183	4
2	5	0	13	0	17	0	15	0	34	1
3	215	11	192	7	205	5	232	5	247	5
4	113	6	250	9	477	12	416	9	331	6
5	137	7	264	10	313	8	357	7	304	6
6	1073	55	1415	51	1731	43	1415	29	1121	21
7	37	2	46	2	69	2	85	2	123	2
8	66	3	122	4	357	9	793	16	850	16
9	109	6	179	6	101	2	132	3	55	1
10	84	4	96	3	246	6	400	8	482	9
11	23	1	6	0	4	0	43	1	36	1
12	64	3	118	4	333	8	470	10	831	16
>=13	0	0	0	0	91	2	331	7	618	12
Total	1942	100	2766	100	4061	100	4841	100	5215	100

1* is single use i.e. no reuse

Table 13.06: Dialysate Buffer used in HD Units 1994 – 2002

Dialysate buffer			1994		1995		1996		1997	
	No.	%	No.	%	No.	%	No.	%	No.	%
Acetate			830	87	822	80	648	52	551	33
Bicarbonate			122	13	207	20	603	48	1125	67
Total			952	100	1029	100	1251	100	1676	100
Dialysate buffer	1998		1999		2000		2001		2002	
	No.	%	No.	%	No.	%	No.	%	No.	%
Acetate	610	29	549	19	381	9	233	5	112	2
Bicarbonate	1475	71	2417	81	3955	91	4900	95	5436	98
Total	2085	100	2966	100	4336	100	5133	100	5548	100

Table .13.07: Distribution of KT/V, HD patients 1994-2002

Year	No of subjects	Mean	SD	Median	LQ	UQ	% patients <1	% patients 1-<1.2	% patients 1.2-<1.4	% patients 1.4-<1.6	% patients ≥1.6
1994	891	1.3	.3	1.3	1.1	1.5	14	26	28	19	13
1995	977	1.3	.3	1.3	1.1	1.5	12	27	27	20	14
1996	1176	1.3	.3	1.3	1.1	1.5	10	25	26	22	17
1997	1560	1.4	.3	1.4	1.2	1.5	9	21	27	22	21
1998	2023	1.4	.3	1.4	1.2	1.6	7	17	27	25	24
1999	2833	1.5	.3	1.5	1.3	1.7	4	13	23	24	35
2000	4090	1.5	.4	1.5	1.3	1.7	4	13	23	24	37
2001	4910	1.5	.4	1.5	1.3	1.7	4	13	23	23	37
2002	5213	1.5	.4	1.5	1.3	1.7	4	14	23	23	36

Table .13.08: Distribution of KT/V in relation to Age, HD patients 1994-2002

Year		Age group (years)							
		<20		20-39		40-59		≥60	
1994	Mean ± SD	1.6	0.5	1.3	0.3	1.3	0.3	1.2	0.2
	Median ± IQR	1.5	0.6	1.3	0.4	1.2	0.4	1.2	0.3
1995	Mean ± SD	1.6	0.4	1.4	0.3	1.3	0.3	1.2	0.3
	Median ± IQR	1.6	0.6	1.3	0.4	1.2	0.3	1.2	0.3
1996	Mean ± SD	1.5	0.3	1.4	0.3	1.3	0.3	1.3	0.3
	Median ± IQR	1.6	0.5	1.4	0.4	1.3	0.4	1.3	0.3
1997	Mean ± SD	1.6	0.3	1.4	0.3	1.3	0.3	1.3	0.3
	Median ± IQR	1.6	0.3	1.4	0.4	1.3	0.4	1.3	0.4
1998	Mean ± SD	1.7	0.5	1.5	0.3	1.4	0.3	1.3	0.3
	Median ± IQR	1.6	0.6	1.5	0.4	1.4	0.4	1.3	0.4
1999	Mean ± SD	1.9	0.5	1.6	0.3	1.5	0.3	1.5	0.3
	Median ± IQR	1.9	0.7	1.6	0.4	1.4	0.4	1.4	0.4
2000	Mean ± SD	2	0.5	1.6	0.4	1.5	0.3	1.5	0.3
	Median ± IQR	2	0.6	1.6	0.5	1.4	0.4	1.4	0.4
2001	Mean ± SD	2	0.6	1.6	0.4	1.5	0.3	1.5	0.3
	Median ± IQR	1.9	0.7	1.6	0.5	1.4	0.4	1.5	0.4
2002	Mean ± SD	1.9	0.6	1.6	0.4	1.5	0.3	1.5	0.3
	Median ± IQR	1.9	0.8	1.6	0.5	1.4	0.4	1.5	0.4

Table .13.09: Distribution of KT/V in relation to Gender, HD patients 1994-2002

Year		Gender			
		Male		Female	
1994	Mean ± SD	1.2	0.3	1.4	0.3
	Median ± IQR	1.2	0.3	1.4	0.4
1995	Mean ± SD	1.2	0.3	1.4	0.3
	Median ± IQR	1.2	0.3	1.4	0.4
1996	Mean ± SD	1.3	0.2	1.5	0.3
	Median ± IQR	1.2	0.3	1.5	0.4
1997	Mean ± SD	1.3	0.3	1.5	0.3
	Median ± IQR	1.3	0.4	1.5	0.4
1998	Mean ± SD	1.3	0.3	1.5	0.3
	Median ± IQR	1.3	0.4	1.5	0.4
1999	Mean ± SD	1.4	0.3	1.6	0.4
	Median ± IQR	1.4	0.4	1.6	0.5
2000	Mean ± SD	1.4	0.3	1.7	0.4
	Median ± IQR	1.4	0.4	1.6	0.5
2001	Mean ± SD	1.4	0.3	1.6	0.4
	Median ± IQR	1.4	0.4	1.6	0.5
2002	Mean ± SD	1.4	0.3	1.6	0.4
	Median ± IQR	1.4	0.4	1.6	0.5

Table .13.10: Distribution of KT/V in relation to Diabetes mellitus, HD patients 1994-2002

Year		Diabetes mellitus			
		Without DM		With DM	
1994	Mean \pm SD	1.3	0.3	1.2	0.2
	Median \pm IQR	1.3	0.4	1.1	0.3
1995	Mean \pm SD	1.3	0.3	1.2	0.2
	Median \pm IQR	1.3	0.4	1.2	0.3
1996	Mean \pm SD	1.4	0.3	1.2	0.2
	Median \pm IQR	1.3	0.4	1.2	0.3
1997	Mean \pm SD	1.4	0.3	1.2	0.2
	Median \pm IQR	1.4	0.4	1.2	0.3
1998	Mean \pm SD	1.5	0.3	1.3	0.3
	Median \pm IQR	1.4	0.4	1.3	0.3
1999	Mean \pm SD	1.6	0.4	1.4	0.3
	Median \pm IQR	1.5	0.5	1.3	0.3
2000	Mean \pm SD	1.6	0.4	1.4	0.3
	Median \pm IQR	1.5	0.5	1.4	0.3
2001	Mean \pm SD	1.6	0.4	1.4	0.3
	Median \pm IQR	1.5	0.5	1.4	0.4
2002	Mean \pm SD	1.6	0.4	1.4	0.3
	Median \pm IQR	1.5	0.5	1.4	0.4

Table .13.11: Unadjusted five-year patient survival in relation to KT/V,
HD patients 1997-2002

KT/V	<1		1-<1.2		1.2-<1.4		1.4-<1.6		≥1.6	
Interval (months)	% survival	SE	% survival	SE	% survival	SE	% survival	SE	% survival	SE
6	95	2	96	1	97	0	97	1	98	0
12	88	3	91	1	94	1	94	1	95	0
24	75	4	82	2	88	1	86	1	89	1
36	66	5	75	2	79	1	79	2	83	1
48	61	6	67	3	71	1	72	2	78	1
60	57	7	61	3	64	2	65	3	73	2

SE=standard error

Figure .13.11: Unadjusted five-year patient survival in relation to KT/V, HD patients 1997-2002

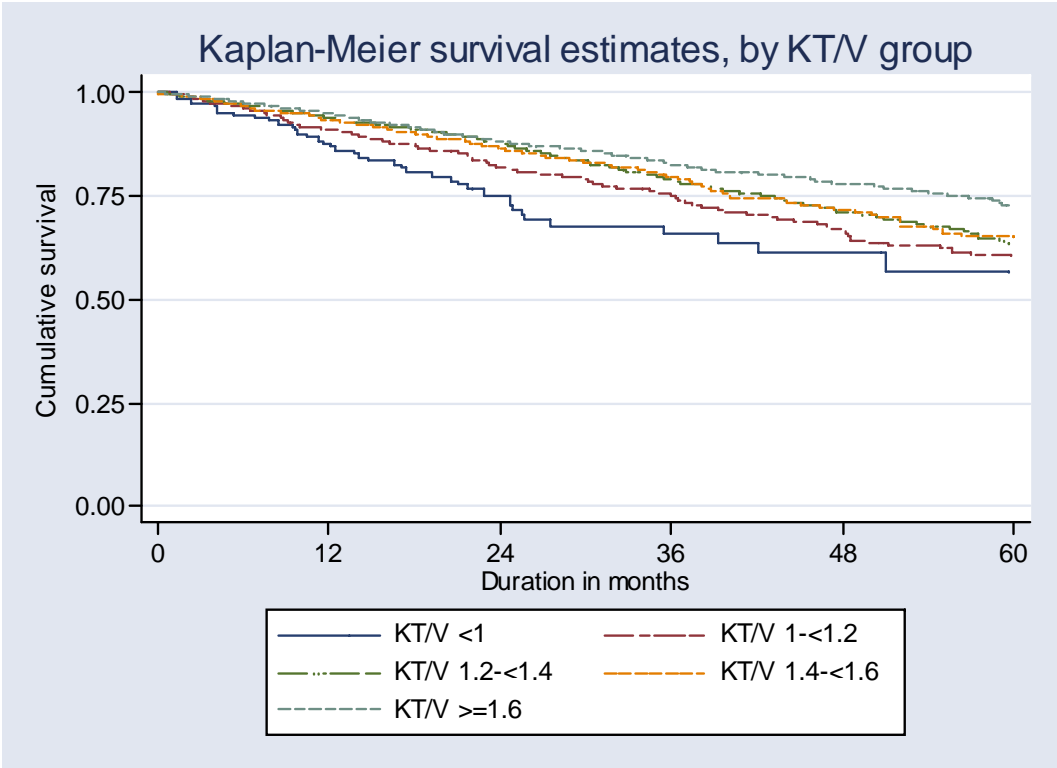


Table .13.12: Adjusted five-year patient survival in relation to KT/V, HD patients 1997-2002 (Adjusted for age, gender, primary diagnosis and time on RRT)

KT/V	n	Hazard ratio	95% CI	p-value
<1	164	1.86	(1.34, 2.58)	0.000
1-<1.2	690	1.17	(0.97, 1.41)	0.096
1.2-<1.4	2133	1.00	-	-
1.4-<1.6	740	1.04	(0.86, 1.26)	0.691
≥1.6	2131	1.01	(0.87, 1.18)	0.888

Figure .13.12: Adjusted five-year patient survival in relation to KT/V, HD patients 1997-2002 (Adjusted for age, gender, primary diagnosis and time on RRT)

