

Table 7.1.1: Distribution of Haemoglobin Concentration without Erythropoietin, all HD patients, 1993 – 2002

Year	No. of subjects	Mean	Std Dev	Median	LQ	UQ	% Patients <10 g/dL	% Patients ≥10 & ≤12 g/dL	% Patients >12 g/dL
1993	639	8.4	2	8.1	7	9.6	80	15	5
1994	784	8.6	1.9	8.4	7.1	9.7	79	15	6
1995	809	8.9	1.9	8.6	7.4	10	74	18	8
1996	812	9.1	1.9	8.9	7.7	10.3	71	21	8
1997	896	9.3	1.9	9	8	10.5	68	23	9
1998	1119	9.1	1.9	8.9	7.8	10.3	70	21	8
1999	1401	9.1	1.9	8.9	7.8	10.3	70	23	7
2000	1754	9.4	2.1	9.1	7.9	10.6	67	23	11
2001	1809	9.4	1.9	9.3	8	10.6	63	27	10
2002	1710	9.6	2.1	9.4	8.1	10.9	61	26	13

Figure 7.1.1: Mean of hemoglobin Concentration without Erythropoietin (rHuEpo), HD patients, 1993-2002

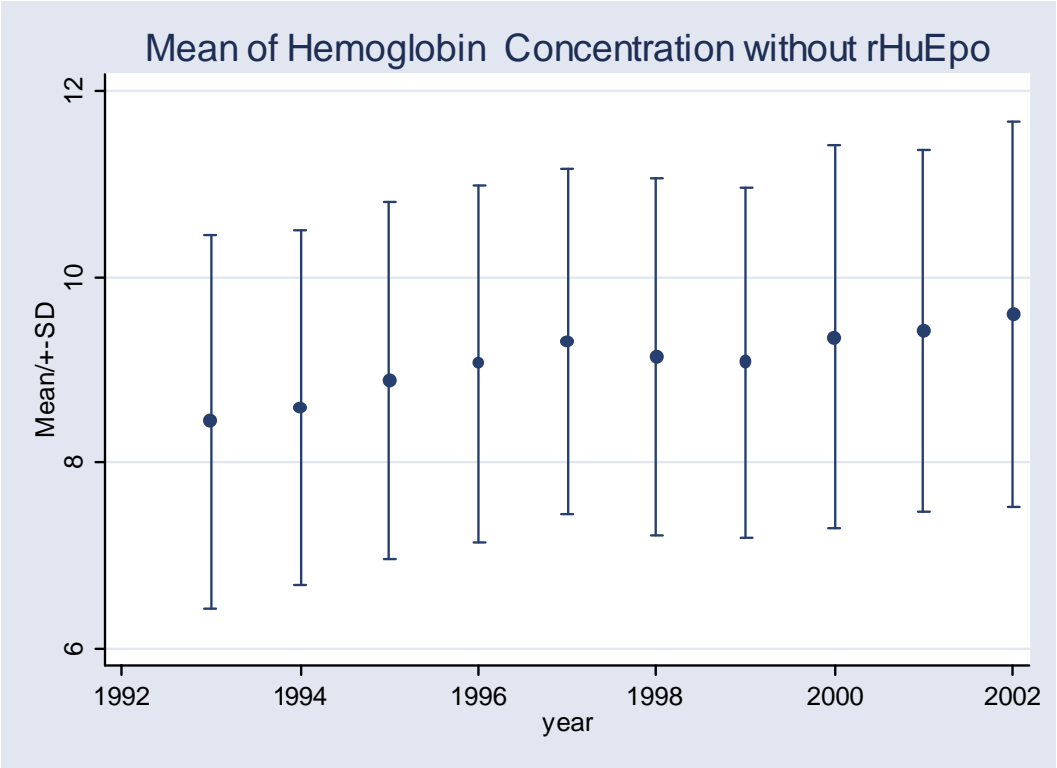


Table 7.1.2: Distribution of Haemoglobin Concentration on Erythropoietin, HD patients, 1993 – 2002

Year	No. of subjects	Mean	Std Dev	Median	LQ	UQ	% Patients <10 g/dL	% Patients ≥10 & ≤12 g/dL	% Patients >12 g/dL
1993	57	7.7	1.5	7.6	6.6	8.8	91	9	0
1994	149	7.8	1.4	7.6	6.8	8.8	93	7	0
1995	207	8.7	1.5	8.9	7.6	9.8	81	18	1
1996	400	8.7	1.6	8.5	7.5	9.6	81	17	3
1997	775	8.9	1.6	8.9	7.8	9.9	75	22	2
1998	972	9.1	1.6	9.1	7.9	10.2	71	27	2
1999	1504	9.1	1.5	9.1	8.1	10.2	71	27	3
2000	2336	9.4	1.7	9.4	8.3	10.5	64	30	5
2001	3051	9.4	1.6	9.4	8.3	10.5	64	31	5
2002	3617	9.5	1.7	9.5	8.4	10.6	62	31	7

Figure 7.1.2: Mean of hemoglobin Concentration on Erythropoietin, HD patients, 1993-2002

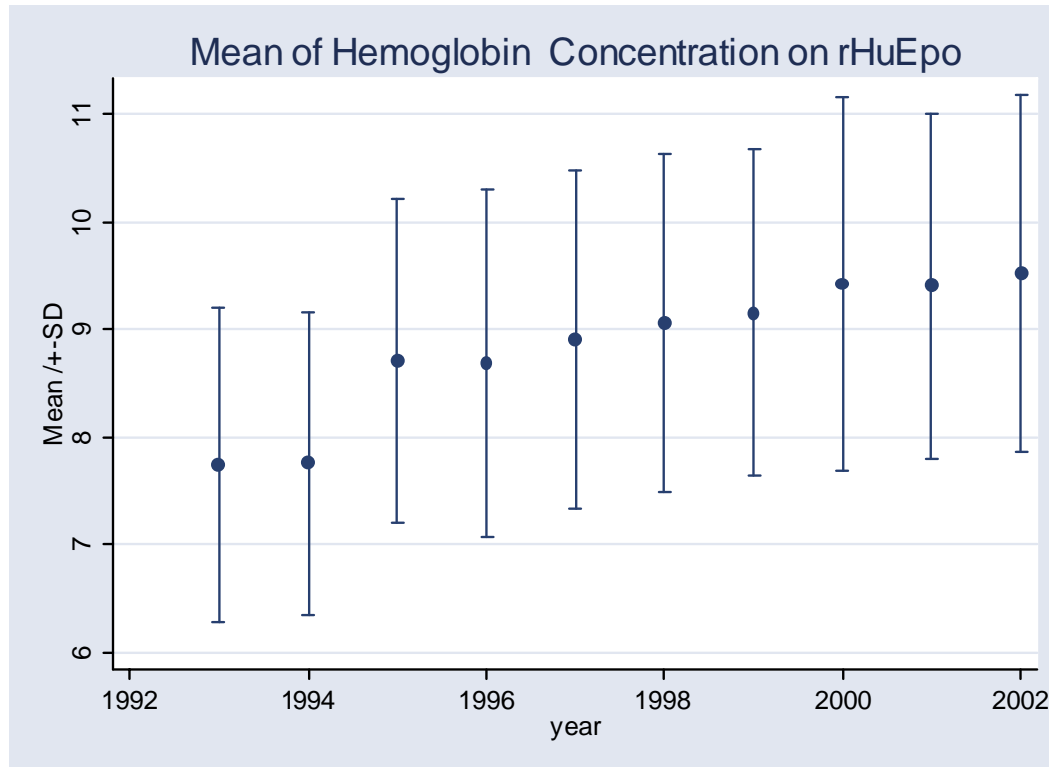


Table 7.1.3: Distribution of Haemoglobin concentration without Erythropoietin, CAPD patients, 1993 - 2002

Year	No of subjects		Mean	Std Dev	Median	LQ	UQ	% Patients <10 g/dL	% Patients ≥10 & ≤12 g/dL	% Patients >12 g/dL
1993	91		9.3	2	9.1	7.9	10.2	71	20	9
1994	99		9.3	2	9.1	7.8	10.3	69	21	10
1995	209		9.1	1.6	8.9	8	10.1	73	22	5
1996	274		9.2	1.8	9.1	7.8	10.2	72	22	6
1997	298		9.2	1.6	9.1	8.1	10.3	71	24	5
1998	301		9.3	1.8	9.2	8.1	10.3	68	26	6
1999	336		9.5	1.6	9.5	8.4	10.5	64	29	7
2000	342		9.8	1.7	9.7	8.7	10.9	57	34	8
2001	405		9.8	1.8	9.7	8.6	10.7	58	33	9
2002	433		10	1.8	9.9	8.8	11	53	36	10

Figure 7.1.3: Mean of hemoglobin Concentration without Erythropoietin, CAPD patients, 1993-2002

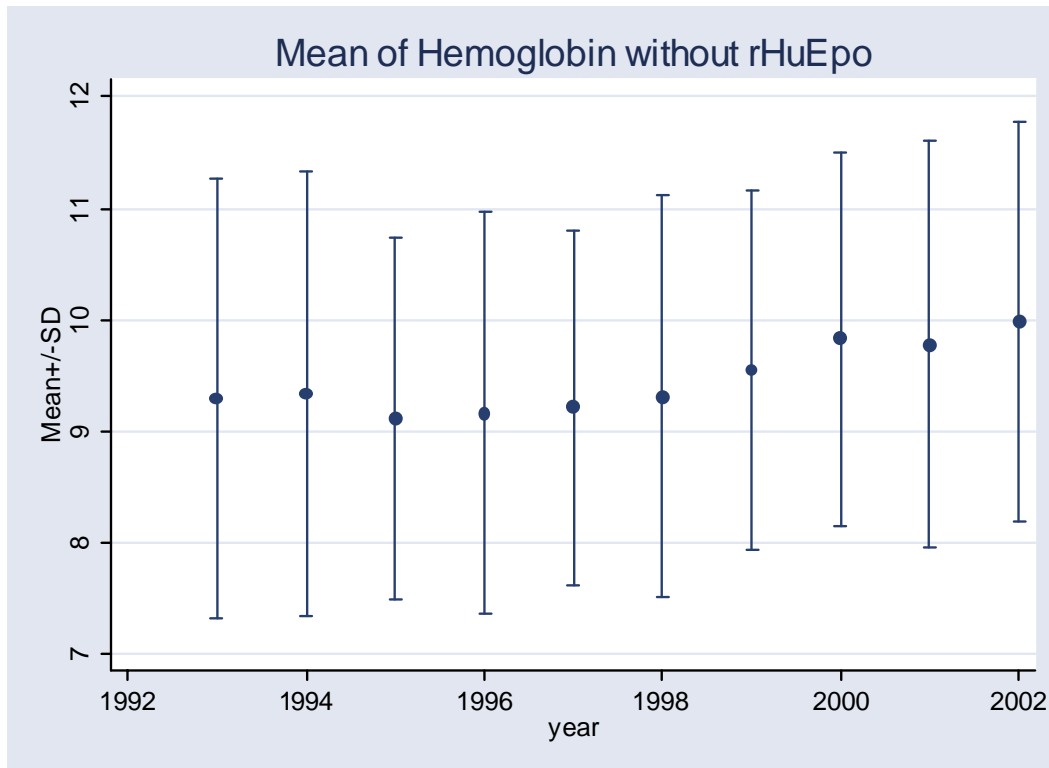


Table 7.1.4 : Distribution of Haemoglobin concentration on Erythropoietin, CAPD patients, 1993– 2002

Year	No of subjects	Mean	Std Dev	Median	LQ	UQ	% Patients <10 g/dL	% Patients ≥10 & ≤12 g/dL	% Patients >12 g/dL
1993	8	7.1	1.2	6.7	6.2	8.3	100	0	0
1994	20	7.9	1	8	7	9	100	0	0
1995	45	8.5	1.5	8.4	7.5	9.3	89	9	2
1996	92	8.5	1.5	8.5	7.3	9.4	86	13	1
1997	175	8.8	1.5	8.6	7.7	9.8	79	18	2
1998	238	9	1.6	8.8	8	10.1	74	21	5
1999	262	9	1.6	8.9	7.9	10.2	73	24	4
2000	299	9.4	1.7	9.2	8.1	10.6	65	29	6
2001	345	9.3	1.6	9.4	8.2	10.5	65	30	6
2002	431	9.4	1.6	9.3	8.4	10.4	67	27	6

Figure 7.1.4 Mean of hemoglobin Concentration on Erythropoietin, CAPD patients, 1993-2002

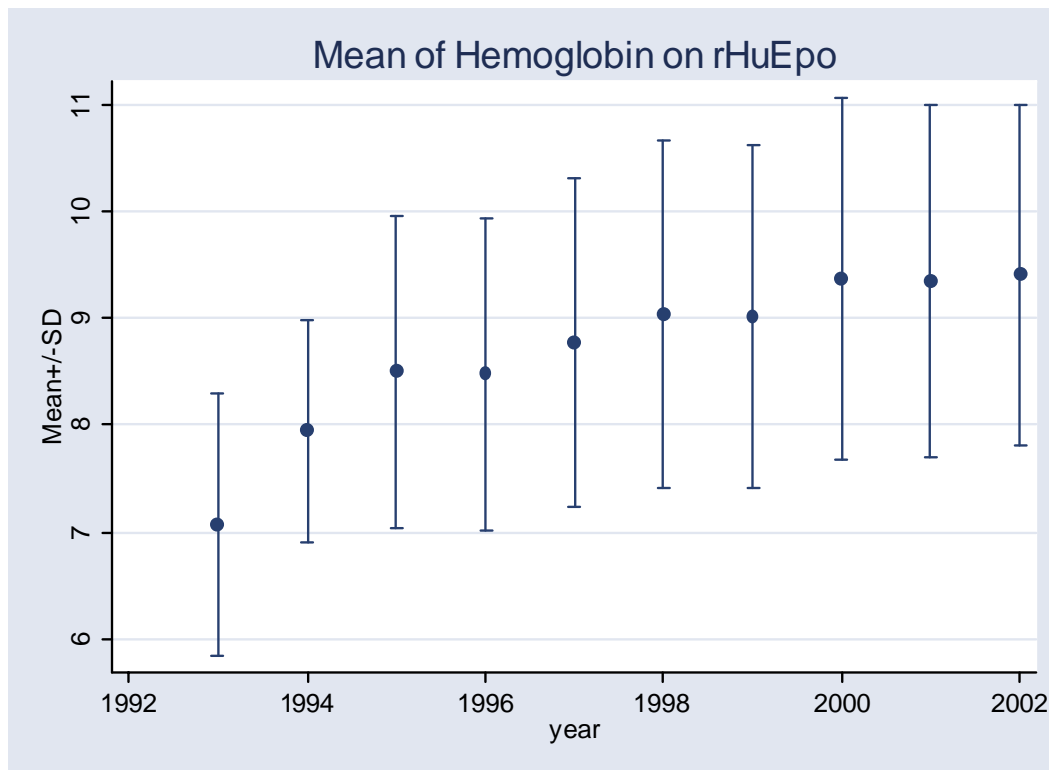


Table 7.2.1 : Treatment for Anemia, HD patients

Year	Number	% on Erythropoietin	% received blood transfusion	% on oral Iron	% received parenteral Iron
1993	718	8	20	0	0
1994	963	16	10	94	1
1995	1034	20	9	95	1
1996	1256	33	8	92	3
1997	1697	46	8	92	4
1998	2142	46	13	92	4
1999	2998	51	15	90	5
2000	4395	56	15	88	5
2001	5196	62	13	88	5
2002	5674	67	11	86	7

Table 7.2.2: Distribution of Erythropoietin dose per week, HD patients 1994-2002

Year	1994	1995	1996	1997
No. of patients	147	202	396	751
% - 2000 u/week	13	9	9	21
% 2-4000 u/week	56	67	67	61
% 4-6000 u/week	9	6	6	5
% 6-8000 u/week	19	16	16	11
% 8-12000 u/week	3	1	2	2
% >12000 u/week	1	0	0	0

Year	1998	1999	2000	2001	2002
No. of Patients	920	1474	2365	3134	3686
% - 2000 u/week	27	33	35	34	33
% 2-4000 u/week	54	52	51	50	51
% 4-6000 u/week	6	5	6	7	8
% 6-8000 u/week	10	9	6	6	6
% 8-12000 u/week	2	1	2	2	2
% >12000 u/week	0	0	0	0	0

Table 7.2.3: Distribution of Serum Ferritin without Erythropoietin, HD patients, 1994 –2002

Year	No of subjects	No of obs	Mean	Std Dev	Median	LQ	UQ	% Patients ≥ 100 ug/L
1994	15	15	256.4	279.2	189	36.5	274	67
1995	42	42	293.3	249.5	199.5	135	401	79
1996	63	63	310.3	286.8	218	82	492	71
1997	280	280	493.1	349.3	435.5	162.5	850.5	86
1998	224	224	430.8	383.2	297.5	128.4	636.5	80
1999	337	337	517.9	424.3	402.8	162.8	809.5	86
2000	571	571	487.5	416.8	363.2	152.5	741	83
2001	758	758	537.6	453.9	383.5	172	828	87
2002	755	755	518.9	441.1	376	170	781	85

Figure 7.2.3 : Mean of Serum Ferritin without Erythropoietin, HD patients, 1993-2002

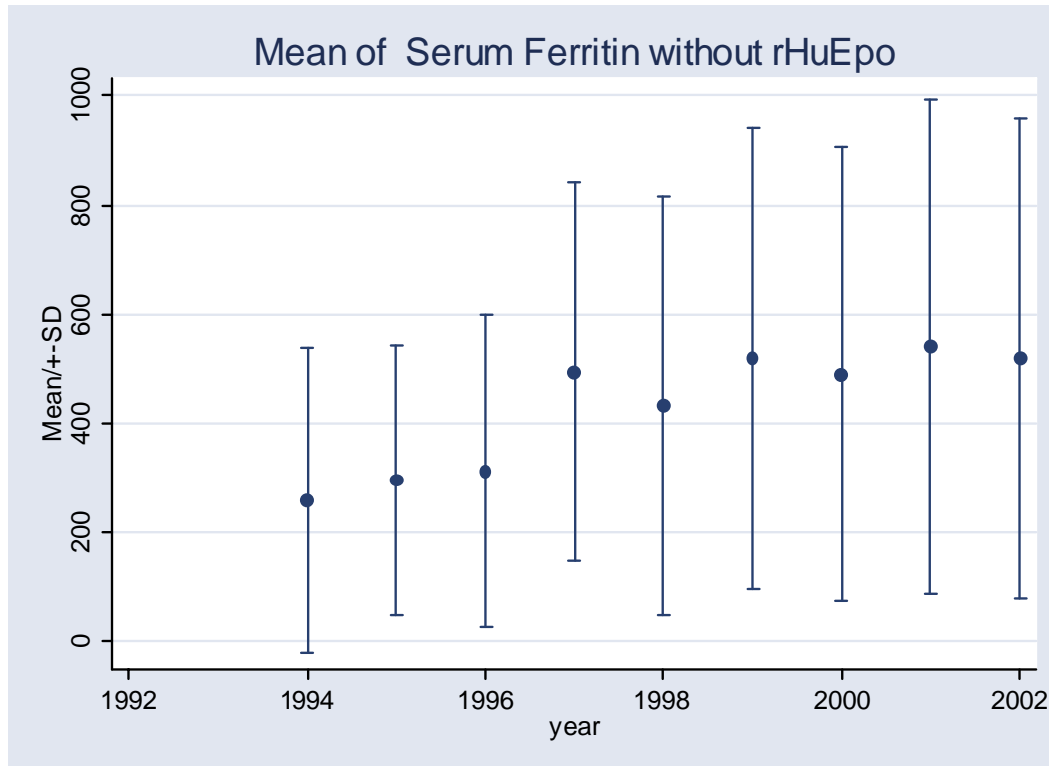


Table 7.2.4: Distribution of Serum Ferritin on Erythropoietin, HD patients, 1994 – 2002

Year	No of subjects	Mean	Std Dev	Median	LQ	UQ	% Patients ≥ 100 ug/L
1994	9	286.6	288.3	210	148.5	295.5	78
1995	97	526.4	321.3	500	243	816	94
1996	156	494.9	348.7	397.5	173.5	856.3	89
1997	472	543.3	346.7	496.3	219	966.8	90
1998	329	549.8	381.8	477	249.5	803	91
1999	587	561.2	418.6	453	225	830	93
2000	1177	588.5	456.4	476	219	863	91
2001	1639	598.1	444.3	491.3	236	899	91
2002	2071	601	461	475.3	236	891	92

Figure 7.2.4 : Mean of Serum Ferritin on Erythropoietin, HD patients, 1993-2002

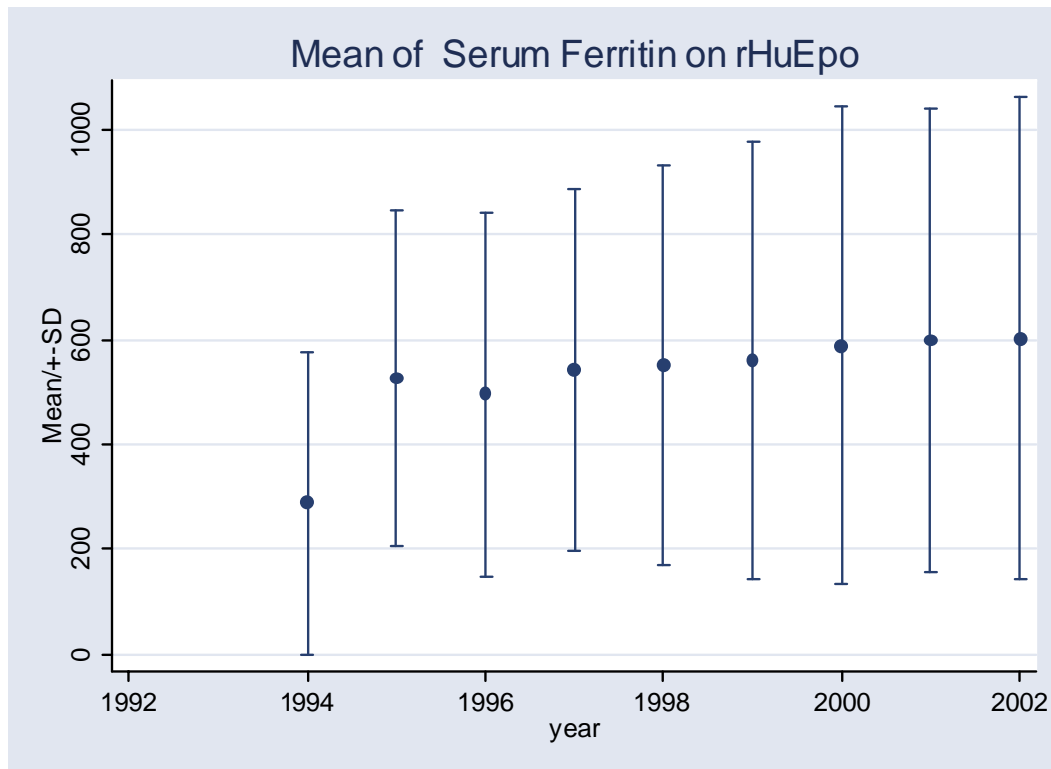


Table 7.2.5.: Treatment for Anemia, CAPD patients

Year	Number	% on Erythropoietin	% received blood transfusion	% on oral Iron	% received parenteral Iron
1993	102	8	13	0	0
1994	122	17	7	97	1
1995	256	18	9	98	1
1996	371	25	8	97	1
1997	477	37	12	96	3
1998	541	44	16	96	3
1999	610	44	14	94	0
2000	662	46	11	92	4
2001	781	45	11	91	2
2002	889	49	11	93	2

Table 7.2.6: Distribution of Erythropoietin dose per week, CAPD patients 1994-2002

Year	1994	1995	1996	1997
No of patients	20	45	86	170
% - 2000 u/week	30	31	28	19
% 2-4000 u/week	65	62	63	66
% 4-6000 u/week	0	0	0	2
% 6-8000 u/week	5	4	7	11
% 8-12000 u/week	0	2	2	1
% >12000 u/week	0	0	0	0

Year	1998	1999	2000	2001	2002
No of patients	225	259	287	336	427
% - 2000 u/week	25	35	31	32	30
% 2-4000 u/week	56	50	53	51	52
% 4-6000 u/week	6	3	5	7	6
% 6-8000 u/week	12	9	9	7	10
% 8-12000 u/week	1	2	3	2	3
% >12000 u/week	0	0	0	0	0

Table 7.2.7: Distribution of Serum Ferritin without Erythropoietin, CAPD patients, 1994 – 2002

Year	No of subjects	Mean	Std Dev	Median	LQ	UQ	% Patients ≥ 100 ug/L
1994	1	164.5	0	164.5	164.5	164.5	100
1995	4	532.3	405.9	548.5	181.5	883	100
1996	40	403.6	302.3	288.5	188.5	622.5	88
1997	133	469	333.5	392	198	718	88
1998	92	492.4	368.3	405	208.2	687.5	87
1999	124	553.7	400.1	499.3	255.3	686.8	94
2000	144	505.9	433.8	420	152.3	675.5	88
2001	223	543.8	417.5	440	216.9	754	91
2002	235	635	492.2	510	225	938	93

Figure 7.2.7: Mean of Serum Ferritin without Erythropoietin, CAPD patients, 1993-2002

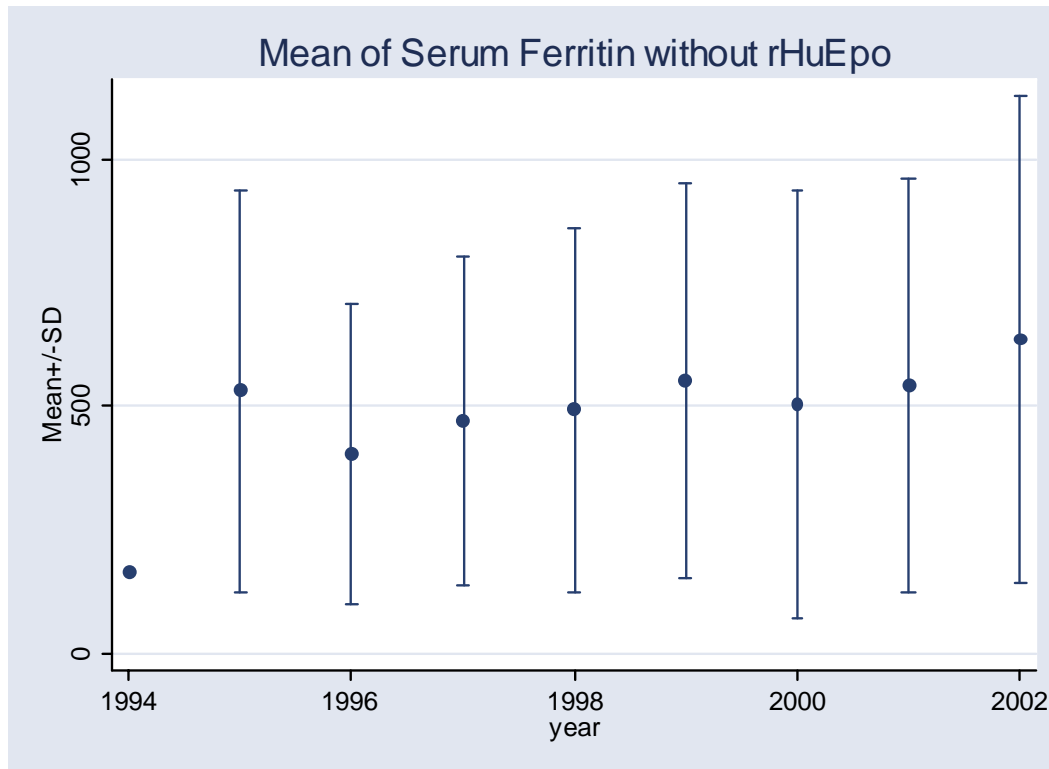


Table 7.2.8: Distribution of Serum Ferritin on Erythropoietin, CAPD patients, 1994 – 2002

Year	No of subjects	Mean	Std Dev	Median	LQ	UQ	% Patients ≥ 100 ug/L
1994	8	333.1	319.3	252.5	113.3	549	75
1995	11	497.2	349.2	349	175	999	100
1996	49	646.6	311.4	679	438	999	98
1997	129	550.8	323.7	496	256	862	93
1998	135	611.2	438.3	524.7	257	839.5	93
1999	136	604.8	436.3	540.6	264.6	870.1	93
2000	180	608.2	416.7	560	295.2	846.3	92
2001	261	645.9	449.2	557.5	275.7	885.4	93
2002	344	666.4	463	536	284	999.8	94

Figure 7.2.8: Mean of Serum Ferritin on Erythropoietin, CAPD patients, 1993-2002

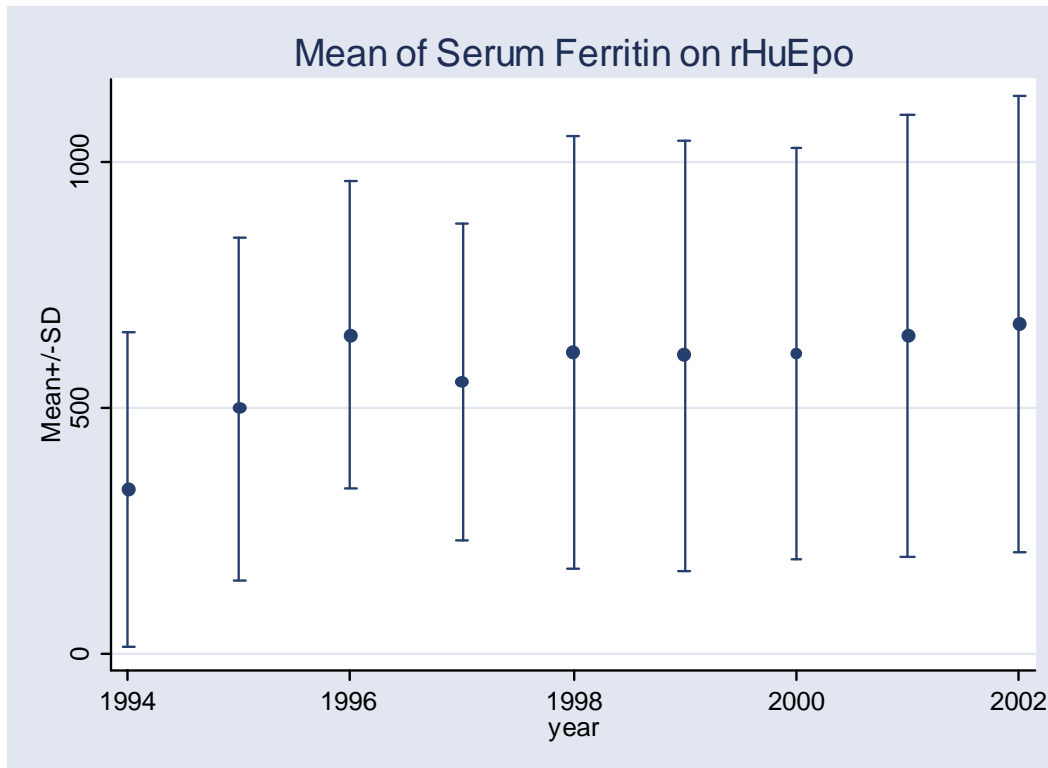


Table 7.3.1: Adjusted five-year patient survival in relation to Haemoglobin (Hb), HD patients 1997-2002 (Adjusted for age, gender, primary diagnosis and time on RRT)

Hb (g/dl)	N	Hazard Ratio	95% CI	P value
Hb <8	1374	3.26	(2.71,3.93)	0.000
Hb 8-<9	1493	1.62	(1.34,1.97)	0.000
Hb 9-<10	1486	1.42	(1.17,1.73)	0.000
Hb 10-<12*	1282	1.00		
Hb >12	184	1.16	(0.78,1.73)	0.466

* Reference group

Figure 7.3.1: Patient Survival in Relation to Hemoglobin, HD patients 1997-2002
(Adjusted for age, gender, primary diagnosis, time on RRT)

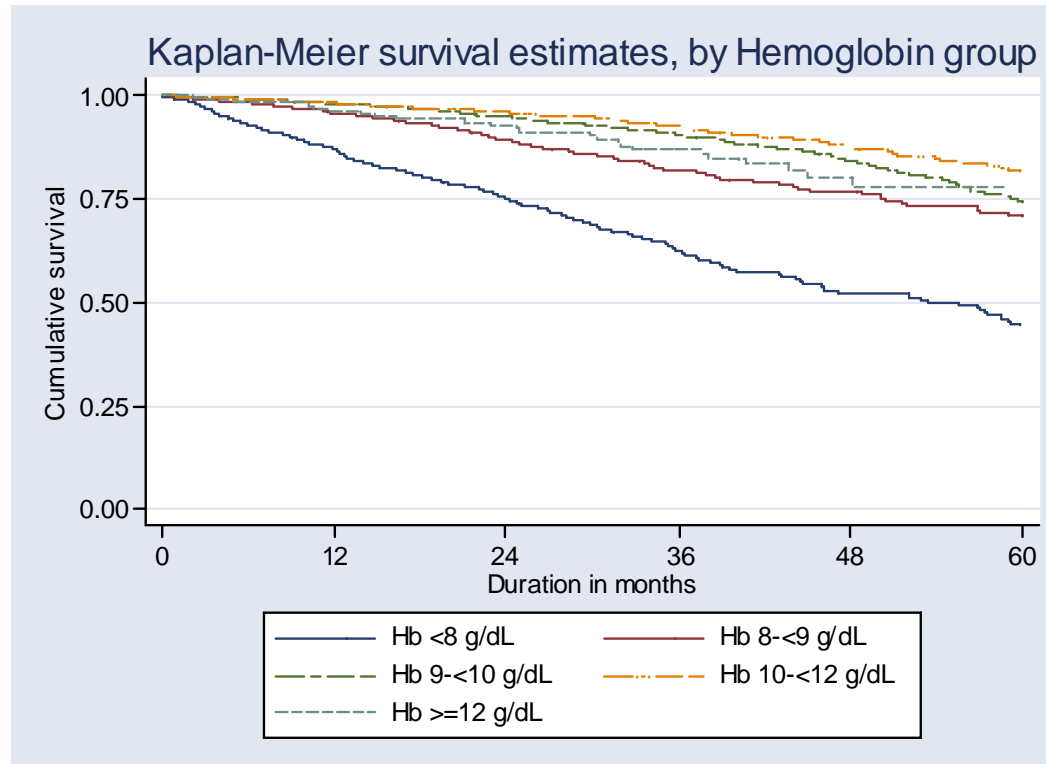


Table 7.3.2: Adjusted five-year patient survival in relation to Haemoglobin (Hb), CAPD patients 1997-2002 (Adjusted for age, gender, primary diagnosis and time on RRT)

Hb (g/dl)	N	Hazard Ratio	95% CI	P value
Hb <8	164	1.60	(1.07,2.40)	0.022
Hb 8-<9	285	1.26	(0.91, 1.75)	0.172
Hb 9-<10	345	1.19	(0.89,1.59)	0.234
Hb 10-<12*	376	1.00		
Hb >12	59	1.06	(0.59,1.90)	0.847

* Reference group

Figure 7.3.2: Adjusted Patient Survival in Relation to Hemoglobin, CAPD patients 1997-2002 (Adjusted for age ,gender, diagnosis, time on RRT)

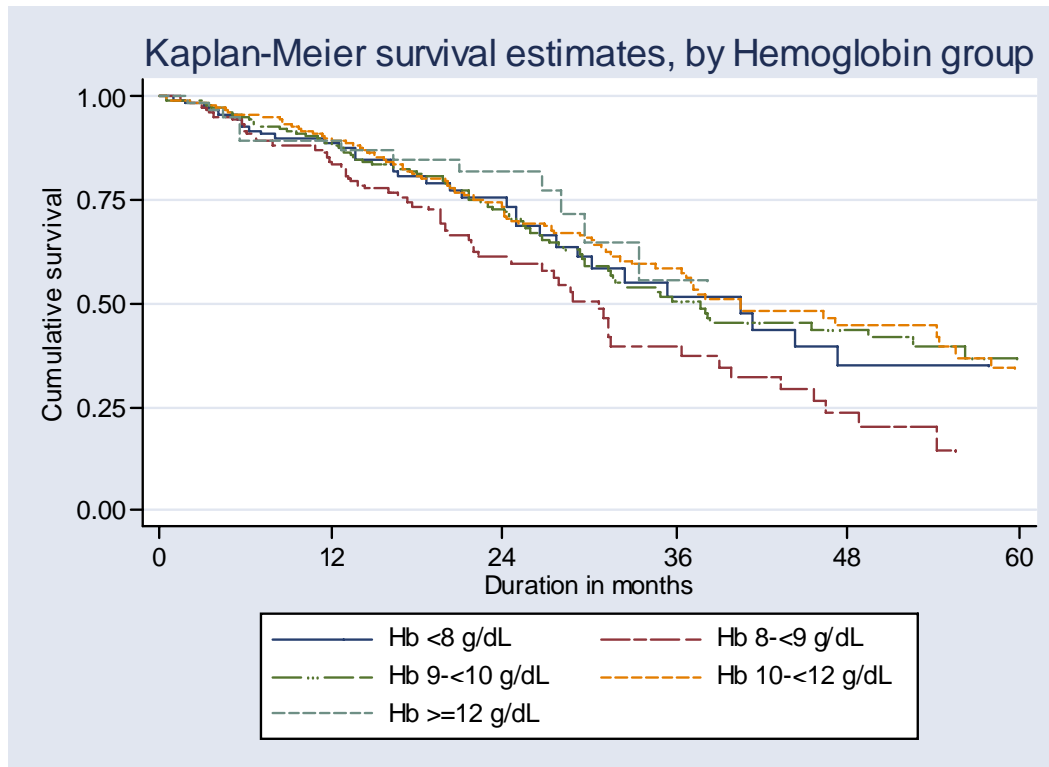


Table 7.3.3: Adjusted five-year patient survival in relation to Haemoglobin (Hb),
 All dialysis patients 1997-2002
 (Adjusted for age, gender, modality, primary diagnosis and time on RRT)

Hb (g/dl)	N	Hazard Ratio	95% CI	P value
Hb <8	1538	2.99	(2.50,3.57)	0.000
Hb 8-<9	1778	1.56	(1.30,1.87)	0.000
Hb 9-<10	1831	1.40	(1.17,1.68)	0.000
Hb 10-<11*	1143	1.00		
Hb 11-<12	515	1.15	(0.89,1.49)	0.286
Hb >12	243	1.17	(0.83,1.64)	0.372

*Reference group

Figure 7.3.3: Patient Survival in Relation to Hemoglobin, All dialysis patients 1997-2002
(Adjusted for age ,gender, modality, primary diagnosis, time on RRT)

