

Table 8.1.1: Distribution of Albumin (g/L), HD patients 1993-2002

Year	No of subjects	Mean	SD	Median	LQ	UQ	% patients <30g/L	% patients 30-<35g/L	% patients 35-<40g/L	% patients ≥40g/L
1993	696	42.1	5.9	41.8	38.5	45.4	1	7	25	66
1994	932	42.4	5.8	42.3	39	45.7	1	6	24	68
1995	997	40.7	6.9	41	38	44	3	9	29	59
1996	1139	41.1	6.4	41.5	38	44.5	2	8	27	63
1997	1646	40.9	6.2	41	37.7	44.3	3	8	30	59
1998	2076	41.2	6.5	41	37.5	44.7	3	9	28	59
1999	2757	39.7	6.1	39.7	36.3	43	4	13	35	49
2000	3737	38.6	7	39	36	42	5	11	41	43
2001	4668	39	5.6	38.5	36	41.8	3	15	44	38
2002	5194	39.3	5.4	39.3	36.5	42	3	11	42	44

Figure 8.1.1: Distribution of Albumin (g/L), HD patients 1993-2002

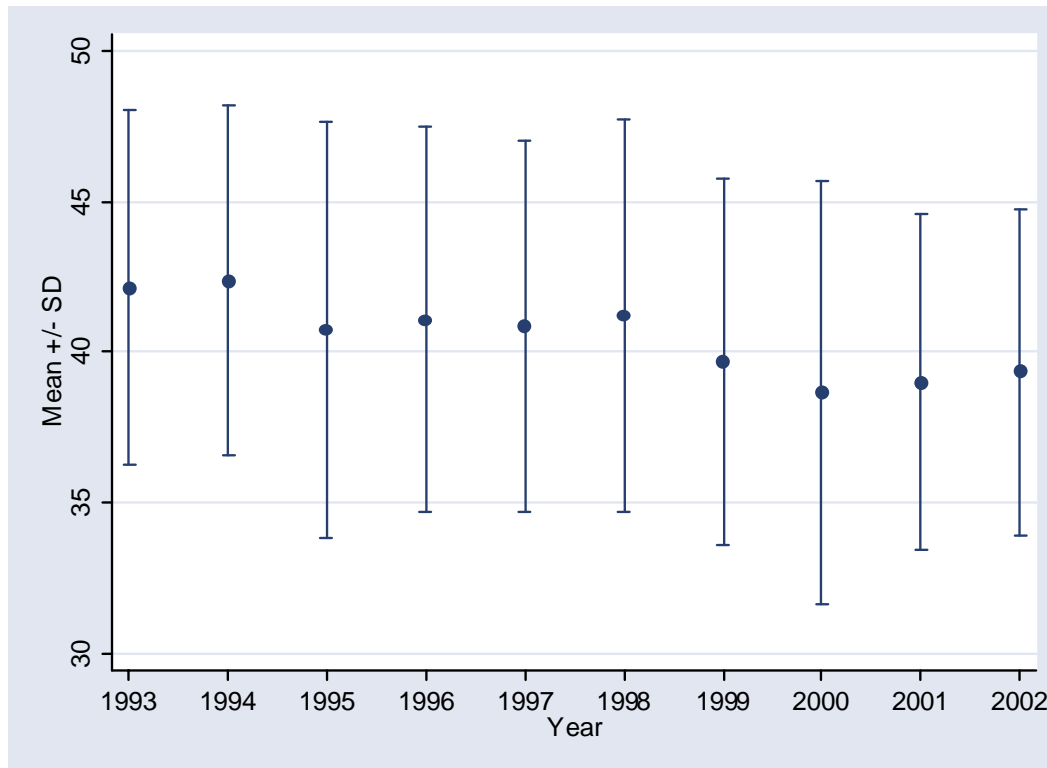


Table 8.1.2: Distribution of Albumin in relation to Age, HD patients 1993-2002

Year		Age group (years)							
		<20		20-39		40-59		≥60	
1993	Mean ± SD	47.5	10.3	42.6	5.3	41.5	5.6	40.5	7.3
	Median ± IQR	46.5	11	42.3	7	41.5	6.3	41	8
1994	Mean ± SD	44.3	6.5	42.9	5.6	41.9	5.9	41.4	6.1
	Median ± IQR	43.3	7.3	43	7.3	41.5	6.3	41.3	8.5
1995	Mean ± SD	42.4	6.3	41.5	7.8	40.2	6.2	39.1	4.4
	Median ± IQR	43.3	4.5	41.8	7	40.3	5.7	39.3	5.8
1996	Mean ± SD	43.3	5.3	41.9	6.6	40.4	6.4	39.7	4.6
	Median ± IQR	43.8	4.5	42.3	6.3	40.9	6.3	40.3	5.8
1997	Mean ± SD	43.3	7.5	42.1	6.1	40.3	5.9	38.8	6.3
	Median ± IQR	42.8	6.9	42	7	40.5	6.5	39.7	7
1998	Mean ± SD	42.8	5.4	42.2	6.6	40.8	6.6	39.1	5.4
	Median ± IQR	43.3	5.5	41.8	7.2	40.7	6.9	39.3	6.5
1999	Mean ± SD	41.8	4.9	40.8	6	39.4	5.8	37.4	6.8
	Median ± IQR	42	5.8	40.5	6.5	39.3	6.7	37.5	6.6
2000	Mean ± SD	39.8	7.7	39.5	7.3	38.6	6.8	37.1	6.3
	Median ± IQR	40.8	6.3	40	6	38.8	6	37	5
2001	Mean ± SD	41.9	5.5	40.3	5.5	38.8	5.6	37.2	5.1
	Median ± IQR	41.8	5.5	39.8	6	38.3	5.7	37	5
2002	Mean ± SD	41.4	5.5	40.3	5.3	39.3	5.4	37.9	5.1
	Median ± IQR	41.8	5.8	40.1	5.3	39.3	5.3	38	4.7

Table 8.1.3: Distribution of Albumin in relation to Gender, HD patients 1993-2002

Year		Gender			
		Male		Female	
1993	Mean \pm SD	42.2	5.6	41.9	6.3
	Median \pm IQR	41.8	7	41.8	6.5
1994	Mean \pm SD	42.7	5.9	41.7	5.6
	Median \pm IQR	42.5	6.8	41.5	7
1995	Mean \pm SD	40.9	7.1	40.4	6.4
	Median \pm IQR	41.3	6.3	40.3	6
1996	Mean \pm SD	41.3	6.3	40.5	6.4
	Median \pm IQR	41.8	6.8	41	6.2
1997	Mean \pm SD	41.3	5.9	40.2	6.5
	Median \pm IQR	41.3	6.4	40.3	6.5
1998	Mean \pm SD	41.7	6.4	40.4	6.7
	Median \pm IQR	41.5	7	40	6.9
1999	Mean \pm SD	40	6.2	39.1	5.9
	Median \pm IQR	40	6.6	39	6.5
2000	Mean \pm SD	39.1	7.1	38	6.7
	Median \pm IQR	39.6	6.2	38.3	5.3
2001	Mean \pm SD	39.6	5.7	38.2	5.3
	Median \pm IQR	39.2	6.2	38	6
2002	Mean \pm SD	39.7	5.5	38.8	5.2
	Median \pm IQR	39.8	5.5	38.7	5.1

Table 8.1.4: Distribution of Albumin in relation to Diabetes mellitus, HD patients 1993-2002

Year		Diabetes mellitus			
		Without DM		With DM	
1993	Mean \pm SD	42.3	5.9	40.3	5.3
	Median \pm IQR	42	7	41	6
1994	Mean \pm SD	42.6	5.4	41	7.7
	Median \pm IQR	42.3	6.8	41.3	8
1995	Mean \pm SD	41.1	6.9	38.8	6.3
	Median \pm IQR	41.3	6.1	39.3	5.7
1996	Mean \pm SD	41.4	6.5	39.2	5.4
	Median \pm IQR	42	6.3	39.5	7
1997	Mean \pm SD	41.3	6.2	39	5.7
	Median \pm IQR	41.3	6.3	39.3	7.1
1998	Mean \pm SD	41.6	6.3	39.6	7
	Median \pm IQR	41.3	7	39.7	7.3
1999	Mean \pm SD	40.1	5.8	38.3	6.8
	Median \pm IQR	40	6.3	38.5	7.3
2000	Mean \pm SD	39.1	7	37.4	6.8
	Median \pm IQR	39.5	6	37.6	5.7
2001	Mean \pm SD	39.6	5.4	37.6	5.6
	Median \pm IQR	39	6	37.3	5.3
2002	Mean \pm SD	39.8	5.3	38.2	5.4
	Median \pm IQR	39.7	5.3	38.3	5.5

Table 8 1.5.: Adjusted one-year patient survival in relation to Albumin, HD patients 1997-2002 (Adjusted for age, gender, primary diagnosis and time on RRT)

Sr. albumin	n	Hazard ratio	95% CI	p-value
<30 g/L	157	1.98	(1.44,2.72)	0.000
30-<35 g/L	234	1.43	(0.99,2.08)	0.056
35-<40 g/L	451	1.00		
≥40 g/L	345	0.98	(0.68,1.42)	0.924

Table 8.1.6: Adjusted five-year patient survival in relation to Albumin, HD patients 1997-2002 (Adjusted for age, gender, primary diagnosis and time on RRT)

Sr. albumin	n	Hazard ratio	95% CI	p-value
<30 g/L	263	5.44	(4.43, 6.69)	0.000
30-<35 g/L	845	2.13	(1.82, 2.49)	0.000
35-<40 g/L	2471	1.00	-	-
≥40 g/L	2038	0.70	(0.59, 0.83)	0.000

Figure 8.1.6: Adjusted five-year patient survival in relation to Albumin, HD patients 1997-2002 (Adjusted for age, gender, primary diagnosis and time on RRT)

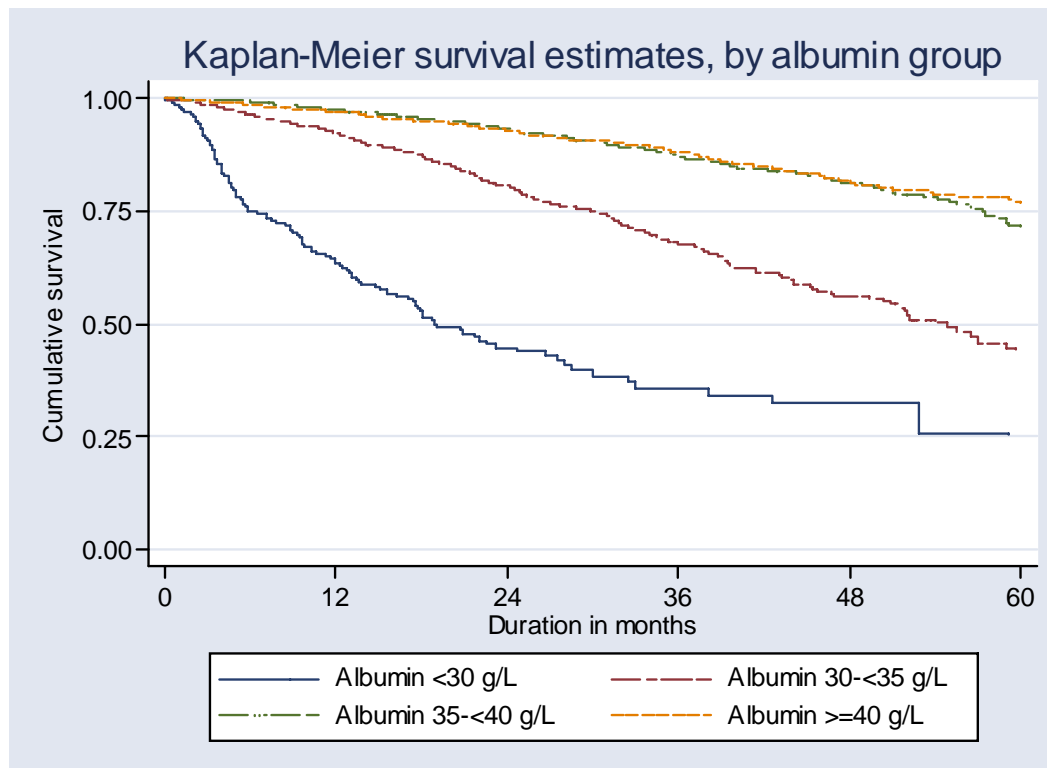


Table 8.1.7: Distribution of BMI, HD patients 1993-2002

Year	No of subjects	Mean	SD	Median	LQ	UQ	% patients <18.5	% patients 18.5-25	% patients >25
1993	598	21.3	3.6	21.1	18.6	23.5	24	61	15
1994	830	21.6	3.7	21.4	18.8	23.7	22	61	17
1995	915	21.8	3.8	21.5	19	24	19	63	18
1996	1139	21.9	3.9	21.6	19.2	24.1	19	62	19
1997	1517	21.9	4	21.5	19.1	24.1	19	61	20
1998	1938	22	4.2	21.5	19.1	24.1	19	61	20
1999	2655	22	4.1	21.4	19.1	24.3	18	62	20
2000	3777	22.1	4.2	21.6	19.2	24.4	19	60	21
2001	4435	22.3	4.3	21.8	19.3	24.6	18	60	23
2002	4691	22.5	4.3	22	19.5	24.8	16	60	24

Figure 8.1.7: Distribution of BMI, HD patients 1993-2002

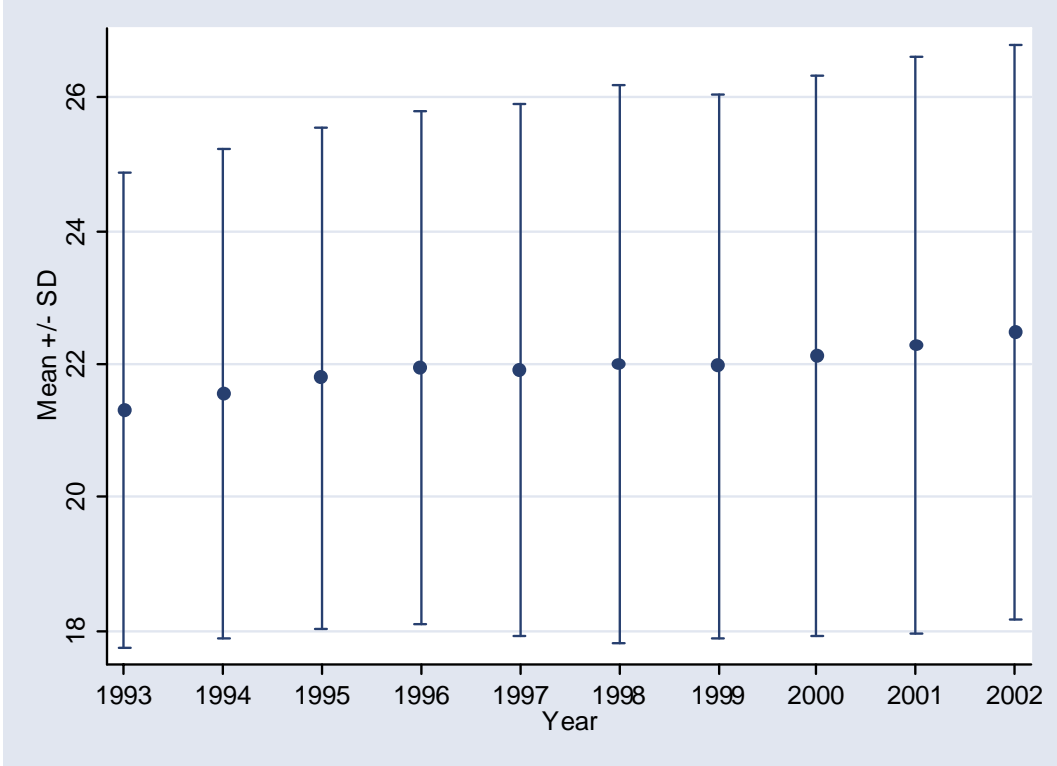


Table 8.1.8: Distribution of BMI in relation to Age, HD patients 1997-2002

Year		Age group (years)							
		<20		20-39		40-59		≥60	
1993	Mean ± SD	18.3	4.3	20.7	3.5	21.9	3.3	23	3.8
	Median ± IQR	17.1	3.1	20.1	4.3	21.8	4.6	23	5.4
1994	Mean ± SD	18.9	4	20.8	3.5	22.1	3.6	22.9	3.6
	Median ± IQR	18.6	4.5	20.5	4.3	21.9	4.9	23.1	5.1
1995	Mean ± SD	18.7	3.7	21.1	3.7	22.4	3.7	22.5	3.4
	Median ± IQR	18.2	4.1	20.6	4.4	22.1	4.8	22.6	4.7
1996	Mean ± SD	19.4	3.4	21.3	3.9	22.5	3.8	23	3.6
	Median ± IQR	19	3.4	20.7	5	22.3	4.8	23	4.3
1997	Mean ± SD	19.2	3.5	21.2	3.9	22.4	4	22.8	3.8
	Median ± IQR	18.5	3.6	20.6	4.6	22.2	5.1	22.4	5
1998	Mean ± SD	19.2	4.3	21.1	3.9	22.6	4.3	22.7	3.9
	Median ± IQR	18.2	5.2	20.5	4.5	22.1	5	22.4	5
1999	Mean ± SD	18.5	3.5	21	3.9	22.6	4.1	22.5	3.8
	Median ± IQR	18.2	3.6	20.4	4.6	22.1	5.1	22	4.9
2000	Mean ± SD	18.8	4.3	21.1	4	22.8	4.2	22.5	4.1
	Median ± IQR	18.1	4.2	20.3	4.6	22.4	5.1	22	4.7
2001	Mean ± SD	18.8	4.1	21.2	4.1	22.9	4.4	22.7	4.1
	Median ± IQR	18.3	3.7	20.6	4.9	22.5	5.3	22.2	4.8
2002	Mean ± SD	19.2	4	21.4	4.2	23.1	4.3	22.7	4.1
	Median ± IQR	18.6	4.1	20.7	4.9	22.7	5.3	22.1	4.7

Table 8.1.9: Distribution of BMI in relation to Gender, HD patients 1997-2002

Year		Gender			
		Male		Female	
1993	Mean \pm SD	21.5	3.3	20.9	3.9
	Median \pm IQR	21.4	4.5	20.4	5.7
1994	Mean \pm SD	21.8	3.5	21.1	3.9
	Median \pm IQR	21.6	4.6	20.7	5.3
1995	Mean \pm SD	22	3.6	21.4	4
	Median \pm IQR	21.6	4.4	21	5.5
1996	Mean \pm SD	22.3	3.7	21.3	4
	Median \pm IQR	22	4.6	20.7	5.6
1997	Mean \pm SD	22.3	3.9	21.3	4
	Median \pm IQR	21.7	4.9	20.7	5.5
1998	Mean \pm SD	22.3	4.1	21.5	4.4
	Median \pm IQR	21.7	4.8	20.9	5.4
1999	Mean \pm SD	22.2	3.9	21.7	4.3
	Median \pm IQR	21.6	4.9	21	5.6
2000	Mean \pm SD	22.4	4	21.7	4.4
	Median \pm IQR	21.9	4.9	21.1	5.5
2001	Mean \pm SD	22.6	4.2	21.9	4.5
	Median \pm IQR	22.1	4.9	21.4	5.8
2002	Mean \pm SD	22.7	4.1	22.2	4.5
	Median \pm IQR	22.2	5	21.7	5.7

Table 8.1.10: Distribution of BMI in relation to Diabetes mellitus, HD patients 1997-2002

Year		Diabetes mellitus			
		Without DM		With DM	
1993	Mean \pm SD	21.1	3.5	22.7	3.5
	Median \pm IQR	20.8	4.7	22.6	5.7
1994	Mean \pm SD	21.3	3.7	23	3.5
	Median \pm IQR	21	4.7	23.1	5.3
1995	Mean \pm SD	21.5	3.7	23.3	3.6
	Median \pm IQR	21.1	4.8	23	4.6
1996	Mean \pm SD	21.7	3.8	23.4	3.6
	Median \pm IQR	21.2	4.9	23.3	4.7
1997	Mean \pm SD	21.5	4	23.5	3.8
	Median \pm IQR	21	4.9	23.3	4.6
1998	Mean \pm SD	21.6	4.1	23.5	4.2
	Median \pm IQR	20.9	5	23	4.7
1999	Mean \pm SD	21.5	4	23.5	3.9
	Median \pm IQR	20.9	4.9	23	5.1
2000	Mean \pm SD	21.6	4.1	23.5	4.1
	Median \pm IQR	20.9	5	23.1	4.9
2001	Mean \pm SD	21.7	4.3	23.6	4.3
	Median \pm IQR	21.2	5.2	23.1	5.2
2002	Mean \pm SD	21.9	4.2	23.7	4.3
	Median \pm IQR	21.4	5.2	23.2	5.1

Table 8.1.11: Unadjusted five-year patient survival in relation to BMI, HD patients 1997-2002

BMI	<18.5		18.5-25		>25	
Interval (months)	% survival	SE	% survival	SE	% survival	SE
6	96	1	97	0	98	0
12	93	1	94	0	95	1
24	84	1	87	1	89	1
36	76	2	79	1	82	1
48	72	2	72	1	74	2
60	67	3	66	1	67	2

SE=standard error

Figure 8.1.11: Unadjusted five-year patient survival in relation to BMI, HD patients 1997-2002

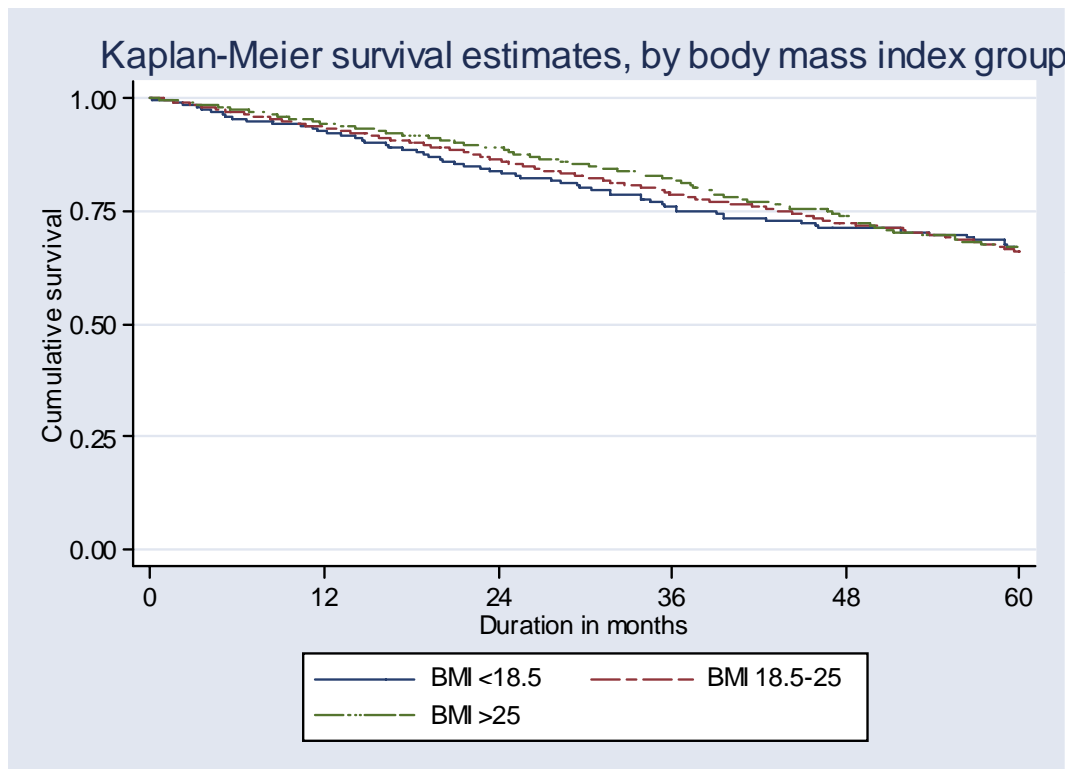


Table 8.1.12: Adjusted five-year patient survival in relation to BMI, HD patients 1997-2002 (Adjusted for age, gender, primary diagnosis and time on RRT)

BMI	n	Hazard ratio	95% CI	p-value
<18.5	789	1.50	(1.25, 1.80)	0.000
18.5-25	3097	1.00	-	-
>25	1176	0.82	(0.70, 0.96)	0.015

Figure 8.1.12: Adjusted five-year patient survival in relation to BMI, HD patients 1997-2002 (Adjusted for age, gender, primary diagnosis and time on RRT)

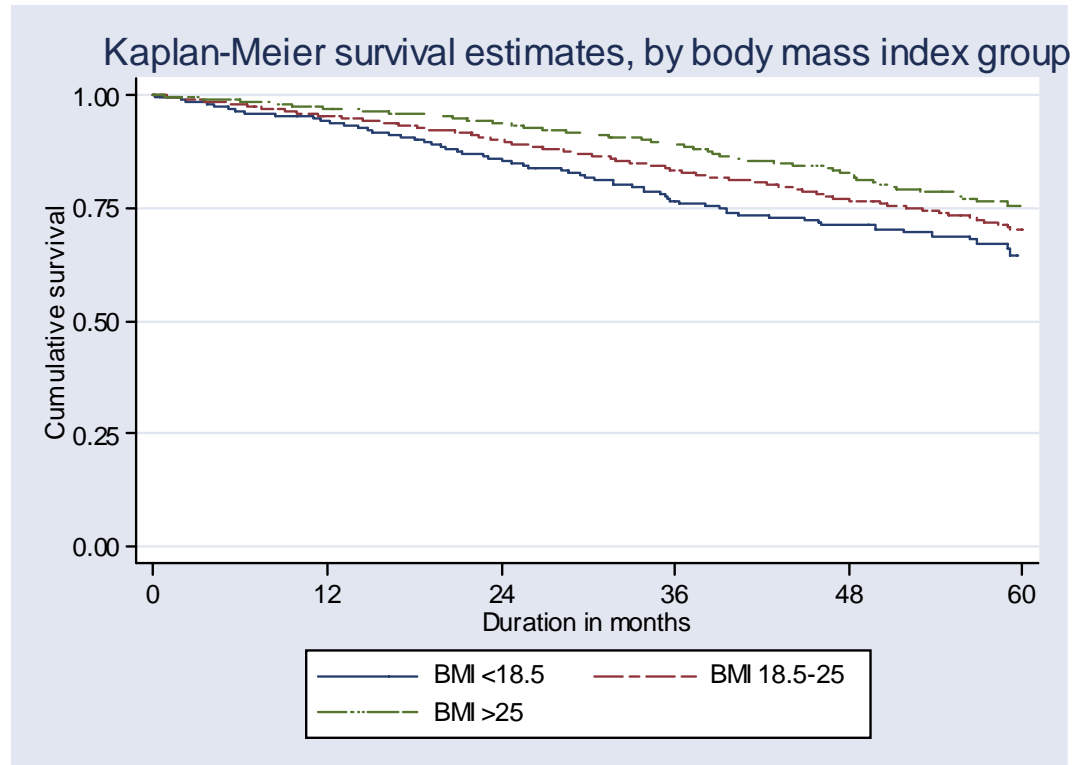


Table 8.2.1: Distribution of Albumin (g/L), CAPD patients 1993-2002

Year	No of subjects	Mean	SD	Median	LQ	UQ	% patients <30 g/L	% patients 30-<35 g/L	% patients 35-<40 g/L	% patients ≥40 g/L
1993	98	38.5	5.3	39.1	35.5	41.5	5	15	37	43
1994	118	39	5.6	39.4	35.8	43	6	14	34	47
1995	252	35.5	5.5	36	32	39.3	15	25	41	19
1996	360	34.8	6.3	35	31	38.5	20	27	35	17
1997	472	35.7	6.8	35.6	31.5	39.5	16	28	34	22
1998	536	35.8	6.7	36	32	39.7	16	25	35	24
1999	597	34.1	6.6	34	30.8	38	21	33	32	14
2000	640	34.3	6.1	35	31	38.3	20	28	37	14
2001	750	33.3	6.2	33.6	29.3	37	27	33	28	12
2002	860	33.9	5.9	34.3	30.8	37.5	21	35	33	12

Figure 8.2.1: Distribution of Albumin (g/L), CAPD patients 1993-2002

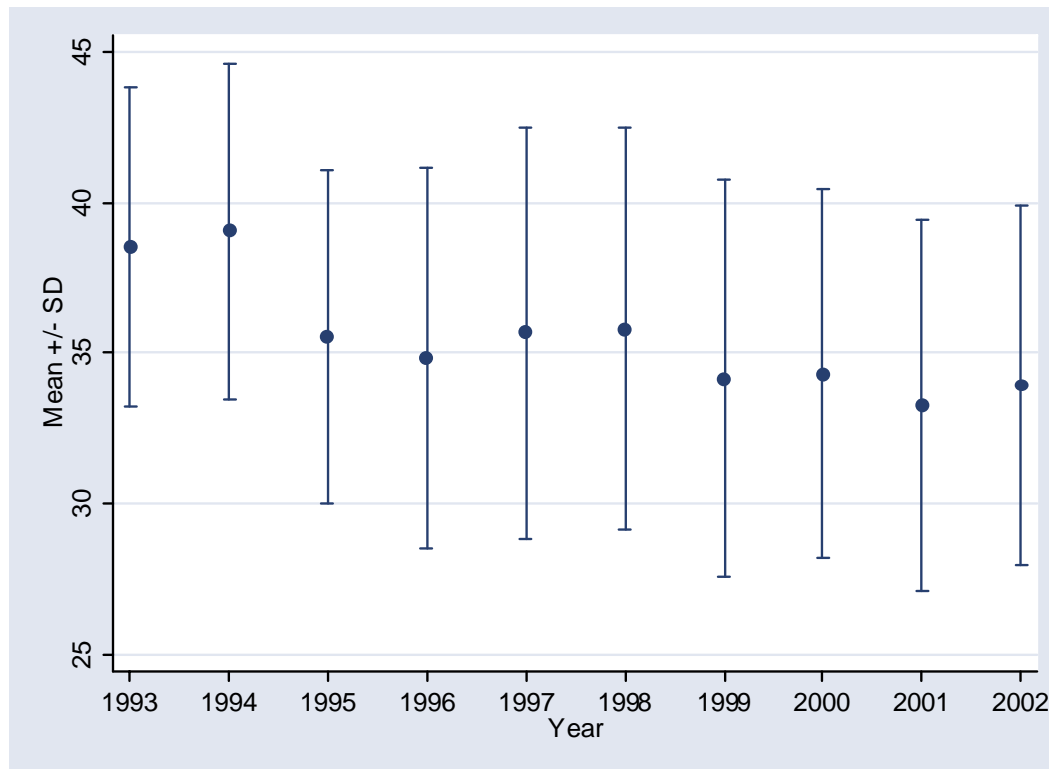


Table 8.2.2: Distribution of Albumin in relation to Age, CAPD patients 1993-2002

Year		Age group (years)							
		<20		20-39		40-59		≥60	
1993	Mean ± SD	37.9	5	39.9	6	38.6	4.7	36.9	6.5
	Median ± IQR	37	9	41	4.5	39.5	5.7	37.3	6.1
1994	Mean ± SD	38.5	7	40.8	6.2	38.6	5	39	5.5
	Median ± IQR	37.4	8	42.5	7.7	38.5	6.3	40	8.8
1995	Mean ± SD	36.9	4.6	37.3	5.4	35	5.9	35	4.9
	Median ± IQR	37	3.5	37.4	8	35.8	7.6	35.3	5.5
1996	Mean ± SD	35.9	5.1	35.5	6.9	34.4	5.9	34.5	7.3
	Median ± IQR	36.5	6.4	35.5	10	35	7.5	35	7.5
1997	Mean ± SD	36.9	6.5	37.6	7.9	35.1	6.6	33.9	5.3
	Median ± IQR	37.3	7.3	37.3	7	35	7.8	34	7
1998	Mean ± SD	37.2	4.8	36.8	5.3	35.5	6.6	34	9.2
	Median ± IQR	37.7	6	37.3	7.4	35.8	7.3	34	11.1
1999	Mean ± SD	35	6.8	34.8	6	33.7	6.8	33.6	6.5
	Median ± IQR	34.8	6.8	34.6	6.5	33.6	8	34	7
2000	Mean ± SD	33.8	6.1	35	5.5	34.4	6.3	33.5	6.4
	Median ± IQR	34.8	6.8	35.7	6.8	35	8.1	33.8	8.5
2001	Mean ± SD	33.5	6.7	33.4	5.8	33.4	6.4	32.6	5.5
	Median ± IQR	33.9	8.5	33.5	7.5	33.8	7.3	32.3	7.4
2002	Mean ± SD	35	5.5	34	5.4	33.5	5.8	33.7	7.3
	Median ± IQR	35.8	7.4	34.3	6.8	33.8	5.8	33.7	7.6

Table 8.2.3: Distribution of Albumin in relation to Gender, CAPD patients 1993-2002

Year		Gender			
		Male		Female	
1993	Mean \pm SD	39.2	5.5	38	5.2
	Median \pm IQR	39.4	6.5	39	6
1994	Mean \pm SD	39	5.6	39	5.5
	Median \pm IQR	38	8	40	8
1995	Mean \pm SD	35.8	5.3	35.2	5.8
	Median \pm IQR	36.3	6.3	35.3	7.3
1996	Mean \pm SD	35.3	6.7	34.3	5.8
	Median \pm IQR	35.3	7.4	34.5	7.5
1997	Mean \pm SD	35.7	7.4	35.6	6.2
	Median \pm IQR	36	8.5	35.5	7.1
1998	Mean \pm SD	36.3	6.7	35.3	6.6
	Median \pm IQR	37	8	35.8	7.8
1999	Mean \pm SD	34.5	7	33.8	6.2
	Median \pm IQR	34.8	7.3	33.7	6.8
2000	Mean \pm SD	34.6	5.7	34.1	6.5
	Median \pm IQR	35.3	7.4	34.5	7.8
2001	Mean \pm SD	33.7	6.4	32.9	5.9
	Median \pm IQR	34	8.4	33.3	7.3
2002	Mean \pm SD	34.1	5.6	33.8	6.2
	Median \pm IQR	34.5	6.8	33.5	6.5

Table 8.2.4: Distribution of Albumin in relation to Diabetes mellitus, CAPD patients 1993-2002

Year		Diabetes mellitus			
		Without DM		With DM	
1993	Mean \pm SD	39.4	4.9	36.6	5.7
	Median \pm IQR	40.3	6	38	6.7
1994	Mean \pm SD	39.6	5.5	37.6	5.5
	Median \pm IQR	40	8	37.8	6.8
1995	Mean \pm SD	36.7	4.9	33.2	5.9
	Median \pm IQR	37	5.8	32.7	8
1996	Mean \pm SD	35.2	5.4	34	7.9
	Median \pm IQR	35.7	7.3	33.3	7.8
1997	Mean \pm SD	36.7	6.9	33.5	6
	Median \pm IQR	36.6	7.3	33.5	7.3
1998	Mean \pm SD	36.6	5.6	34.1	8.2
	Median \pm IQR	37	7.8	34	9.3
1999	Mean \pm SD	34.8	5.9	32.7	7.7
	Median \pm IQR	34.8	6.3	32.7	8
2000	Mean \pm SD	34.9	5.9	32.8	6.5
	Median \pm IQR	35.5	6.9	33	8.5
2001	Mean \pm SD	33.8	6	32.3	6.4
	Median \pm IQR	34	7.5	32.3	7.8
2002	Mean \pm SD	34.6	5.5	32.6	6.5
	Median \pm IQR	35	6.7	32.9	6

Table 8.2.5: Adjusted one-year patient survival in relation to Albumin, CAPD patients 1997-2002 (Adjusted for age, gender, primary diagnosis and time on RRT)

Sr. albumin	n	Hazard ratio	95% CI	p-value
<30 g/L	140	1.63	(0.92,0.90)	0.093
30-<35 g/L	144	1.26	(0.68,2.33)	0.459
35-<40 g/L	112	1.00		
≥40 g/L	51	1.38	(0.52,3.62)	0.517

Table 8.2.6: Adjusted five-year patient survival in relation to Albumin, CAPD patients 1997-2002 (Adjusted for age, gender, primary diagnosis and time on RRT)

Sr. albumin	n	Hazard ratio	95% CI	p-value
<30 g/L	294	2.76	(2.03, 3.75)	0.000
30-<35 g/L	404	1.52	(1.12, 2.06)	0.007
35-<40 g/L	386	1.00	-	-
≥40 g/L	145	1.04	(0.66, 1.66)	0.856

Figure 8.2.6: Adjusted five-year patient survival in relation to Albumin, CAPD patients 1997-2002 (Adjusted for age, gender, primary diagnosis and time on RRT)

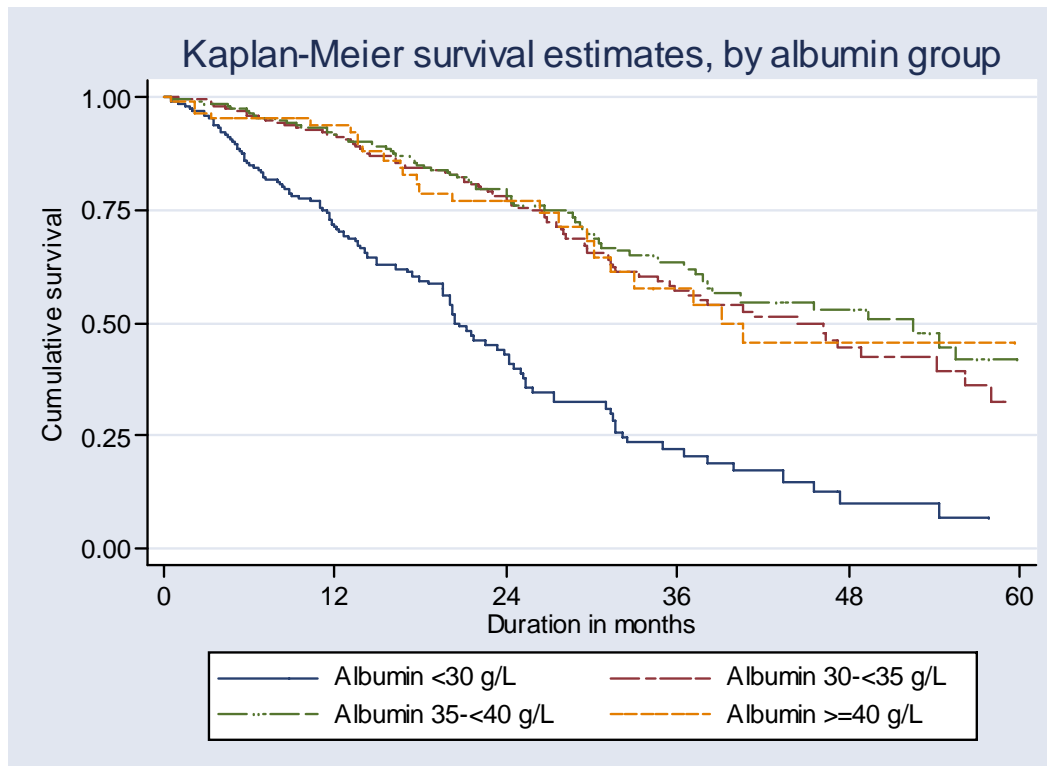


Table 8.2.7: Distribution of BMI, CAPD patients 1993-2002

Year	No of subjects	Mean	SD	Median	LQ	UQ	% patients <18.5	% patients 18.5-25	% patients >25
1993	55	22.1	4.8	22.3	20	25.1	24	51	25
1994	72	22.4	5.1	22.5	18.9	25.6	21	49	31
1995	174	22.3	4.5	22.1	19.2	24.6	17	60	22
1996	281	22.1	4.6	22.1	19.2	25.1	21	52	26
1997	419	22.1	4.6	21.9	18.9	24.7	21	56	23
1998	489	21.7	4.6	21.3	18.7	24	22	57	20
1999	550	21.8	4.4	21.5	18.9	24.5	22	56	22
2000	599	21.8	4.3	21.5	18.6	24.6	25	53	22
2001	655	22.2	4.8	21.8	18.7	25.2	23	51	26
2002	738	22.4	4.8	22.1	18.8	25.5	22	48	29

Figure 8.2.7: Distribution of BMI, CAPD patients 1993-2002

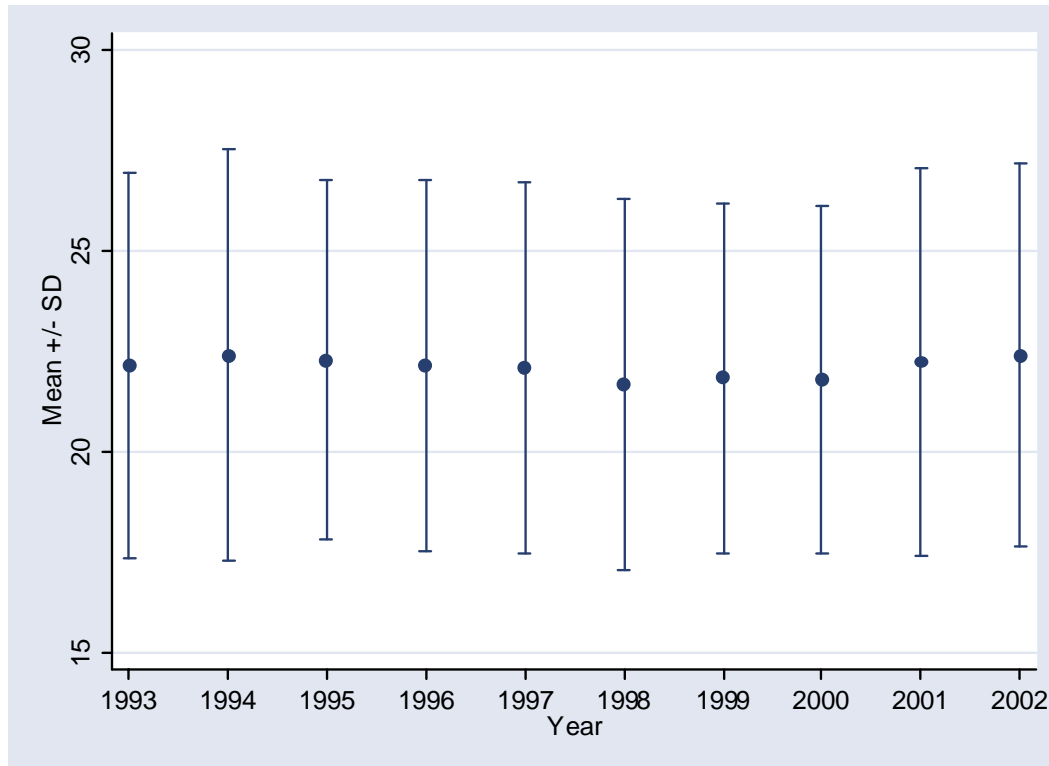


Table 8.2.8: Distribution of BMI in relation to Age, CAPD patients 1993-2002

Year		Age group (years)							
		<20		20-39		40-59		≥60	
1993	Mean ± SD	16.4	3.5	24.1	5.2	23.1	3.3	25.9	4.4
	Median ± IQR	15.4	6.3	23.5	6.8	23.3	3.8	25.4	8.7
1994	Mean ± SD	15.3	3.1	25.5	4.8	23.2	3.7	24.2	5
	Median ± IQR	15.6	2.6	24.9	5.9	23.2	5.1	23.7	6.2
1995	Mean ± SD	16	3.9	23.4	5.1	23	3.5	22.9	3.7
	Median ± IQR	15.2	4.7	22.3	6.7	22.9	4.1	22.2	3.5
1996	Mean ± SD	15.6	3.6	22.9	4.4	23.4	3.9	22.6	3.6
	Median ± IQR	15.1	4.6	21.8	5.8	22.8	5.4	22.2	4.9
1997	Mean ± SD	16.2	3.5	21.8	4.1	23.4	4.1	23.5	3.6
	Median ± IQR	15.4	4.3	21.2	4.5	23.4	5	23.2	4.5
1998	Mean ± SD	16.3	2.9	21.6	4.2	23	4.2	23.2	4
	Median ± IQR	16	4.3	20.8	4.3	22.8	5	22.6	5.2
1999	Mean ± SD	17	3	21.9	4.5	23.2	3.6	22.3	3.9
	Median ± IQR	16.9	4.2	20.9	5.4	23.2	4.9	21.6	4
2000	Mean ± SD	17.5	3.3	21.4	4.1	23.3	3.8	22.8	3.9
	Median ± IQR	17	3.5	20.7	5.5	23.3	5.1	22.2	5
2001	Mean ± SD	18.5	5.3	21.7	4.2	23.7	4.4	23.1	4
	Median ± IQR	17.2	3.8	20.8	5.5	23.5	5.6	22.6	5.1
2002	Mean ± SD	18.3	4.1	21.4	4.2	24.1	4.4	23.9	4
	Median ± IQR	17.5	4.2	20.6	6	23.6	6.1	23.2	5.2

Table 8.2.9: Distribution of BMI in relation to Gender, CAPD patients 1993-2002

Year		Gender			
		Male		Female	
1993	Mean \pm SD	21.8	5.5	22.3	4.3
	Median \pm IQR	22.3	8.2	22.3	4.6
1994	Mean \pm SD	21.7	5.3	23	5
	Median \pm IQR	21.6	7.3	23.4	5.6
1995	Mean \pm SD	22.1	4.4	22.4	4.6
	Median \pm IQR	22.1	4.4	21.6	5.7
1996	Mean \pm SD	21.9	4.6	22.4	4.6
	Median \pm IQR	22.4	5.4	21.7	6.9
1997	Mean \pm SD	22	4.7	22.2	4.5
	Median \pm IQR	22.6	5.8	21.6	5.5
1998	Mean \pm SD	21.7	4.7	21.6	4.6
	Median \pm IQR	21.6	5.5	21	5
1999	Mean \pm SD	21.8	4.5	21.8	4.3
	Median \pm IQR	21.8	5.8	21.2	5.4
2000	Mean \pm SD	21.9	4.4	21.7	4.3
	Median \pm IQR	21.7	6	21.4	6.1
2001	Mean \pm SD	22.1	4.8	22.3	4.8
	Median \pm IQR	22.1	6.5	21.7	6.5
2002	Mean \pm SD	22.2	4.6	22.6	4.9
	Median \pm IQR	22.2	6.7	22	7

Table 8.2.10: Distribution of BMI in relation to Diabetes mellitus, CAPD patients 1993-2002

Year		Diabetes mellitus			
		Without DM		With DM	
1993	Mean \pm SD	21.8	5	23.9	3.1
	Median \pm IQR	21.8	6.2	24.2	3.4
1994	Mean \pm SD	22	5.4	24.8	1.8
	Median \pm IQR	21.5	6.7	25.1	2.6
1995	Mean \pm SD	21.9	4.9	23.4	2.9
	Median \pm IQR	21.3	5.7	23.1	3.9
1996	Mean \pm SD	21.7	5	23.3	3.3
	Median \pm IQR	21.4	6.3	23.3	4.2
1997	Mean \pm SD	21.4	4.9	23.5	3.5
	Median \pm IQR	20.8	5.5	23.7	4.1
1998	Mean \pm SD	20.9	4.8	23.4	3.7
	Median \pm IQR	20.3	5	23.4	4.4
1999	Mean \pm SD	21.2	4.5	23.3	3.5
	Median \pm IQR	20.6	5.5	22.8	4.5
2000	Mean \pm SD	21.1	4.4	23.4	3.8
	Median \pm IQR	20.5	6.4	23.4	4.6
2001	Mean \pm SD	21.4	4.8	24.1	4.2
	Median \pm IQR	20.6	6.7	23.8	5
2002	Mean \pm SD	21.6	4.8	24.3	4.2
	Median \pm IQR	20.8	6.7	23.9	5.6

Table 8.2.11: Unadjusted five-year patient survival in relation to BMI, CAPD patients 1997-2002

BMI	<18.5		18.5-25		>25	
Interval (months)	% survival	SE	% survival	SE	% survival	SE
6	96	1	95	1	99	1
12	91	2	89	1	97	1
24	82	3	74	2	82	3
36	74	4	57	3	64	5
48	65	6	48	3	56	5
60	65	6	40	4	48	7

SE=standard error

Figure 8.2.11: Unadjusted five-year patient survival in relation to BMI, CAPD patients 1997-2002

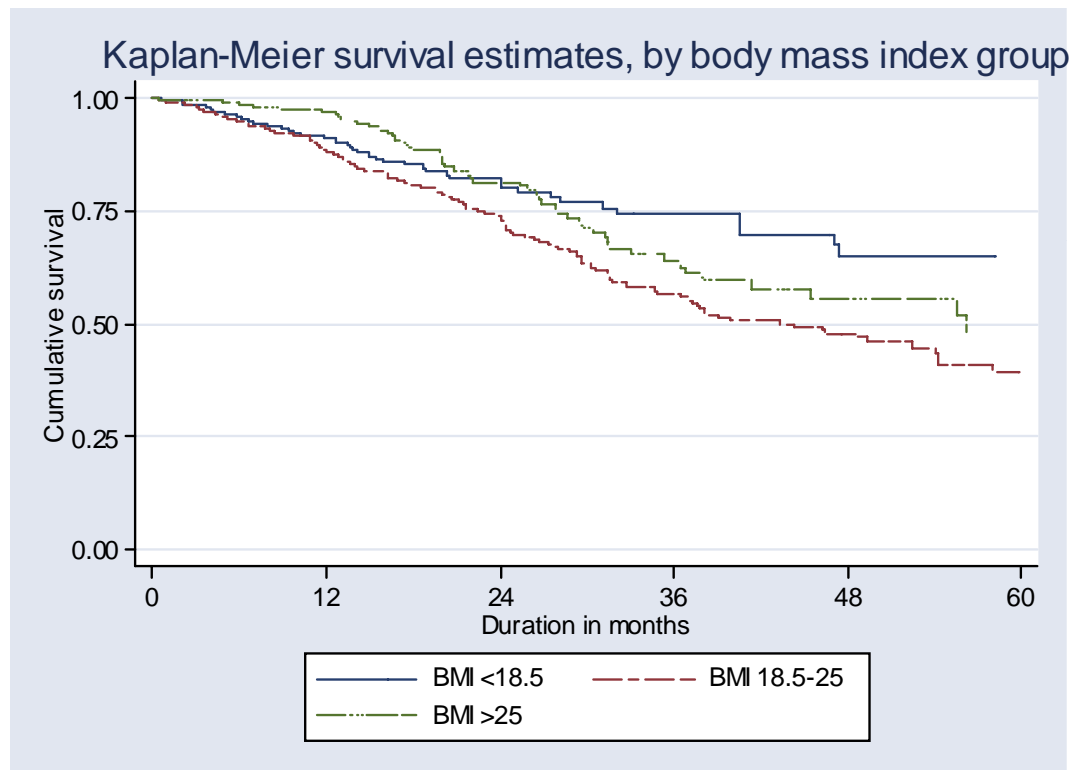


Table 8.2.12: Adjusted five-year patient survival in relation to BMI, CAPD patients 1997-2002 (Adjusted for age, gender, primary diagnosis and time on RRT)

BMI	n	Hazard ratio	95% CI	p-value
<18.5	267	1.35	(0.95, 1.92)	0.089
18.5-25	582	1.00	-	-
>25	250	0.53	(0.39, 0.73)	0.000

Figure 8.2.12: Adjusted five-year patient survival in relation to BMI, CAPD patients 1997-2002 (Adjusted for age, gender, primary diagnosis and time on RRT)

