

Table 9.1: Distribution of Systolic Blood Pressure (mmHg), HD patients 1993-2002

Year	No of subjects	Mean	SD	Median	LQ	UQ	% patients <120 mmHg	% patients 120-<140 mmHg	% patients 140-<160 mmHg	% patients 160-<180 mmHg	% patients ≥180 mmHg
1993	715	141	20.3	140.8	127.3	154.6	13	34	34	16	3
1994	937	142.6	20.7	142.5	128.3	156.1	13	30	37	16	4
1995	1019	142.4	20.5	142.5	129.2	155.8	13	32	36	15	4
1996	1239	142.2	20.3	141.7	129	155.8	13	33	34	16	4
1997	1661	144.5	20.8	144.2	130.8	158.1	11	30	35	19	4
1998	2109	146	20.4	146.7	133.2	159.2	10	27	39	19	5
1999	2967	148.7	20.8	148.5	135.3	162.2	8	25	38	23	6
2000	4313	148.1	20.6	147.8	134.8	161.7	9	25	38	23	6
2001	5149	148.8	20.9	148.8	134.9	162.6	8	25	37	23	7
2002	5594	149.1	20.8	149	135.7	163.5	8	24	37	25	7

Figure 9.1: Distribution of Systolic Blood Pressure (mmHg), HD patients 1993-2002

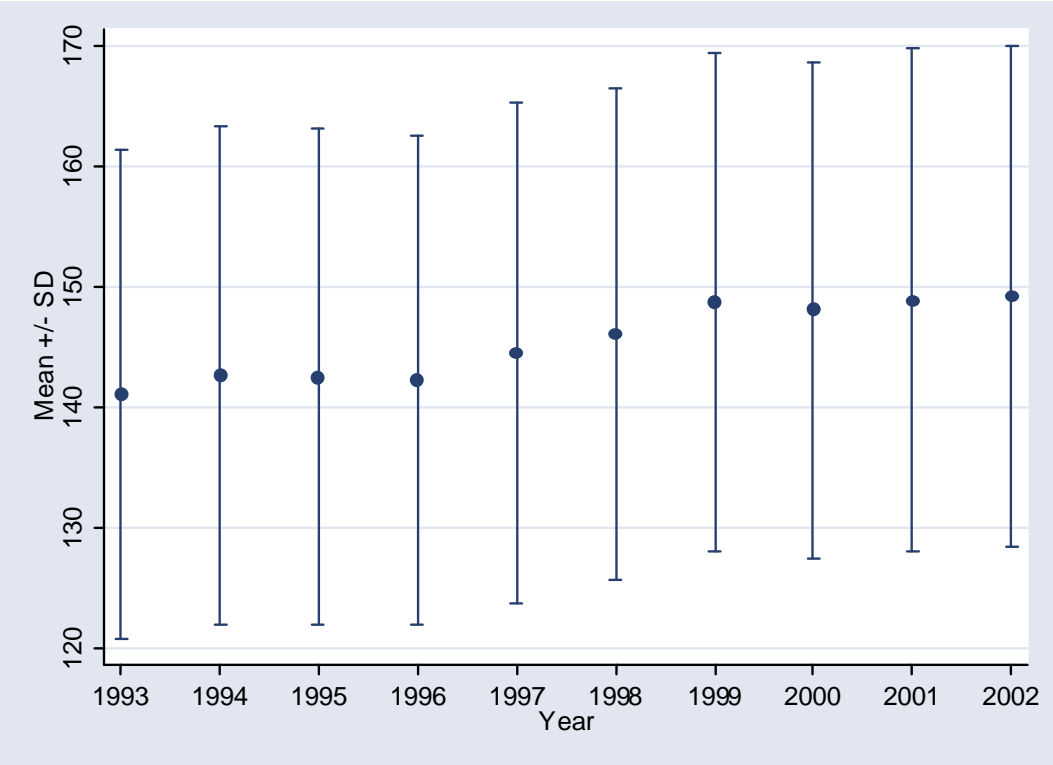


Table 9.2: Distribution of Systolic Blood Pressure in relation to Age, HD patients 1993-2002

Year		Age group (years)							
		<20		20-39		40-59		≥60	
1993	Mean ± SD	128.5	± 16.7	136.5	± 18.8	145.4	± 21.4	149.5	± 15.3
	Median ± IQR	127.5	± 13.3	136.1	± 25.7	145	± 30.1	148.5	± 20.2
1994	Mean ± SD	131	± 14.4	138.5	± 20.1	146.1	± 21	149.5	± 18.4
	Median ± IQR	130.4	± 20.4	138.3	± 26.7	146.7	± 26.5	152.5	± 27.4
1995	Mean ± SD	129	± 19.9	138.3	± 20	145.7	± 20.4	150.2	± 18.7
	Median ± IQR	129.2	± 22.4	137.5	± 27.2	145.7	± 25	150	± 25.9
1996	Mean ± SD	130.3	± 18.9	137.7	± 19.1	145.1	± 20.4	151.9	± 18.5
	Median ± IQR	131.5	± 23	136.7	± 25.4	145	± 26.1	153.5	± 29.5
1997	Mean ± SD	131.3	± 18.6	138.1	± 19.5	149.2	± 20.4	149.5	± 20.4
	Median ± IQR	130	± 23.5	137.7	± 24	150	± 25.4	149.7	± 28.4
1998	Mean ± SD	131.2	± 19.8	140.2	± 19.1	150.2	± 19.9	150.7	± 20.5
	Median ± IQR	131.9	± 34.6	140.6	± 24.5	150.9	± 24.7	150	± 24.3
1999	Mean ± SD	132.3	± 20.2	142.5	± 19.4	152.1	± 20	154.3	± 21.2
	Median ± IQR	131.3	± 31.9	142.1	± 24.9	151.8	± 26.1	153.6	± 25.1
2000	Mean ± SD	132.2	± 18.7	142.5	± 19.3	150.6	± 20.3	152	± 20.8
	Median ± IQR	131.5	± 28.6	142.5	± 25.3	150.5	± 27.5	151.2	± 27
2001	Mean ± SD	132.4	± 18.6	143.3	± 19.8	151.4	± 20.8	151.5	± 20.5
	Median ± IQR	132	± 23.4	143.2	± 25.5	152.2	± 28	150.8	± 27.5
2002	Mean ± SD	133.6	± 19.9	143.7	± 19.3	151.8	± 20.4	151.2	± 21.4
	Median ± IQR	131.8	± 26.1	144.1	± 26.3	152.1	± 27.5	150	± 28.3

Table .9.3: Distribution of Systolic Blood Pressure in relation to Gender, HD patients 1993-2002

Year		Gender			
		Male		Female	
1993	Mean $\pm$ SD	141.5	$\pm$ 20.2	140	$\pm$ 20.6
	Median $\pm$ IQR	140.8	$\pm$ 26	140	$\pm$ 28.3
1994	Mean $\pm$ SD	143.2	$\pm$ 20.5	141.3	$\pm$ 21.1
	Median $\pm$ IQR	143.3	$\pm$ 27.2	141.7	$\pm$ 29.8
1995	Mean $\pm$ SD	143.5	$\pm$ 20.2	140.4	$\pm$ 21.1
	Median $\pm$ IQR	143.3	$\pm$ 26.7	139.9	$\pm$ 26.9
1996	Mean $\pm$ SD	142.6	$\pm$ 19.9	141.3	$\pm$ 20.9
	Median $\pm$ IQR	142.8	$\pm$ 25.1	140	$\pm$ 30.2
1997	Mean $\pm$ SD	145.2	$\pm$ 20.2	143.3	$\pm$ 21.8
	Median $\pm$ IQR	145.5	$\pm$ 26.4	142	$\pm$ 28.4
1998	Mean $\pm$ SD	146.7	$\pm$ 19.8	144.9	$\pm$ 21.4
	Median $\pm$ IQR	147	$\pm$ 24.9	145.1	$\pm$ 27.6
1999	Mean $\pm$ SD	149.3	$\pm$ 20.1	147.7	$\pm$ 21.7
	Median $\pm$ IQR	149.4	$\pm$ 26.2	147.8	$\pm$ 27.8
2000	Mean $\pm$ SD	148.7	$\pm$ 19.7	147.2	$\pm$ 21.7
	Median $\pm$ IQR	148.4	$\pm$ 26.6	146.8	$\pm$ 27.7
2001	Mean $\pm$ SD	149.3	$\pm$ 20.2	148.1	$\pm$ 21.8
	Median $\pm$ IQR	149.4	$\pm$ 26.5	147.8	$\pm$ 30.1
2002	Mean $\pm$ SD	149.4	$\pm$ 19.8	148.8	$\pm$ 22
	Median $\pm$ IQR	149.3	$\pm$ 26.6	148.3	$\pm$ 30.5

Table .9.4: Distribution of Systolic Blood Pressure in relation to Diabetes mellitus, HD patients 1993-2002

Year		Diabetes mellitus			
		Without DM		With DM	
1993	Mean $\pm$ SD	139.4	$\pm$ 20	152.8	$\pm$ 19
	Median $\pm$ IQR	138.5	$\pm$ 25	153.3	$\pm$ 25.8
1994	Mean $\pm$ SD	141.3	$\pm$ 20.4	150.4	$\pm$ 20.9
	Median $\pm$ IQR	141.7	$\pm$ 26.7	152.1	$\pm$ 30.1
1995	Mean $\pm$ SD	140.7	$\pm$ 20.5	152	$\pm$ 18.3
	Median $\pm$ IQR	140	$\pm$ 25.9	150.5	$\pm$ 22.6
1996	Mean $\pm$ SD	140.7	$\pm$ 20.1	150	$\pm$ 19.6
	Median $\pm$ IQR	140	$\pm$ 26.3	150.8	$\pm$ 26.5
1997	Mean $\pm$ SD	141.8	$\pm$ 20	155.6	$\pm$ 20.3
	Median $\pm$ IQR	141.4	$\pm$ 26	156.7	$\pm$ 27.3
1998	Mean $\pm$ SD	143.4	$\pm$ 19.8	155.3	$\pm$ 20.2
	Median $\pm$ IQR	143.8	$\pm$ 25.8	154.9	$\pm$ 24
1999	Mean $\pm$ SD	146	$\pm$ 20.1	156.7	$\pm$ 20.6
	Median $\pm$ IQR	146	$\pm$ 26	156.7	$\pm$ 26.2
2000	Mean $\pm$ SD	144.7	$\pm$ 20.2	156.1	$\pm$ 19.2
	Median $\pm$ IQR	144.7	$\pm$ 26.2	156.7	$\pm$ 25.7
2001	Mean $\pm$ SD	145	$\pm$ 20	156.9	$\pm$ 20.4
	Median $\pm$ IQR	145	$\pm$ 26.8	157.1	$\pm$ 27.2
2002	Mean $\pm$ SD	145.6	$\pm$ 20.2	156.6	$\pm$ 20
	Median $\pm$ IQR	145.7	$\pm$ 27.4	156.8	$\pm$ 27.5

Table .9.5: Unadjusted five-year patient survival in relation to Systolic Blood Pressure, HD patients 1997-2002

Systolic BP	<120 mmHg		120-<140 mmHg		140-<160 mmHg		160-<180 mmHg		≥180 mmHg	
Interval (months)	% survival	SE	% survival	SE	% survival	SE	% survival	SE	% survival	SE
6	94	1	96	1	97	0	98	0	94	1
12	90	2	93	1	94	1	95	1	89	2
24	83	2	87	1	87	1	87	1	78	3
36	80	3	80	1	81	1	78	1	67	3
48	73	3	76	2	75	1	70	2	55	4
60	70	4	72	2	68	2	63	2	44	5

SE=standard error

Figure .9.5: Unadjusted five-year patient survival in relation to Systolic Blood Pressure, HD patients 1997-2002

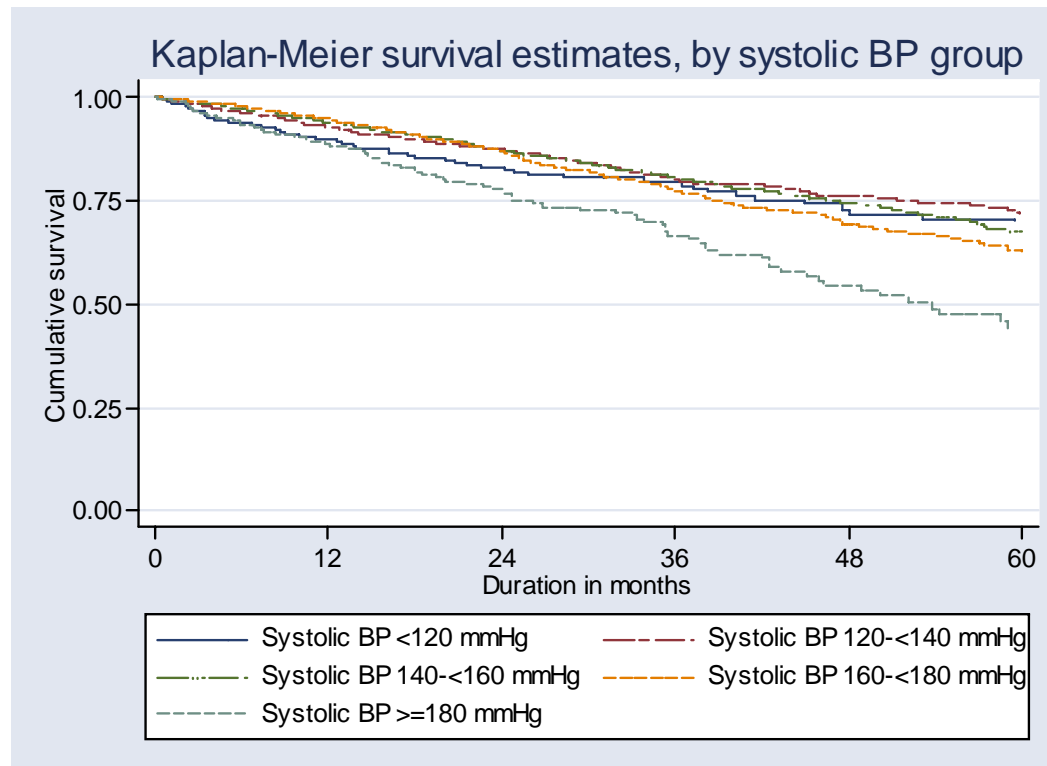


Table .9.6: Adjusted five-year patient survival in relation to Systolic Blood Pressure, HD patients 1997-2002 (Adjusted for age, gender, primary diagnosis and time on RRT)

Systolic BP	n	Hazard ratio	95% CI	p-value
<120 mmHg	345	1.44	(1.11, 1.87)	0.006
120-<140 mmHg	1392	1.11	(0.94, 1.31 )	0.206
140-<160 mmHg	2523	1.00	-	-
160-<180 mmHg	1481	0.96	(0.83, 1.12)	0.614
≥180 mmHg	331	1.54	(1.23, 1.92)	0.000



Figure .9.6: Adjusted five-year patient survival in relation to Systolic Blood Pressure, HD patients 1997-2002 (Adjusted for age, gender, primary diagnosis and time on RRT)

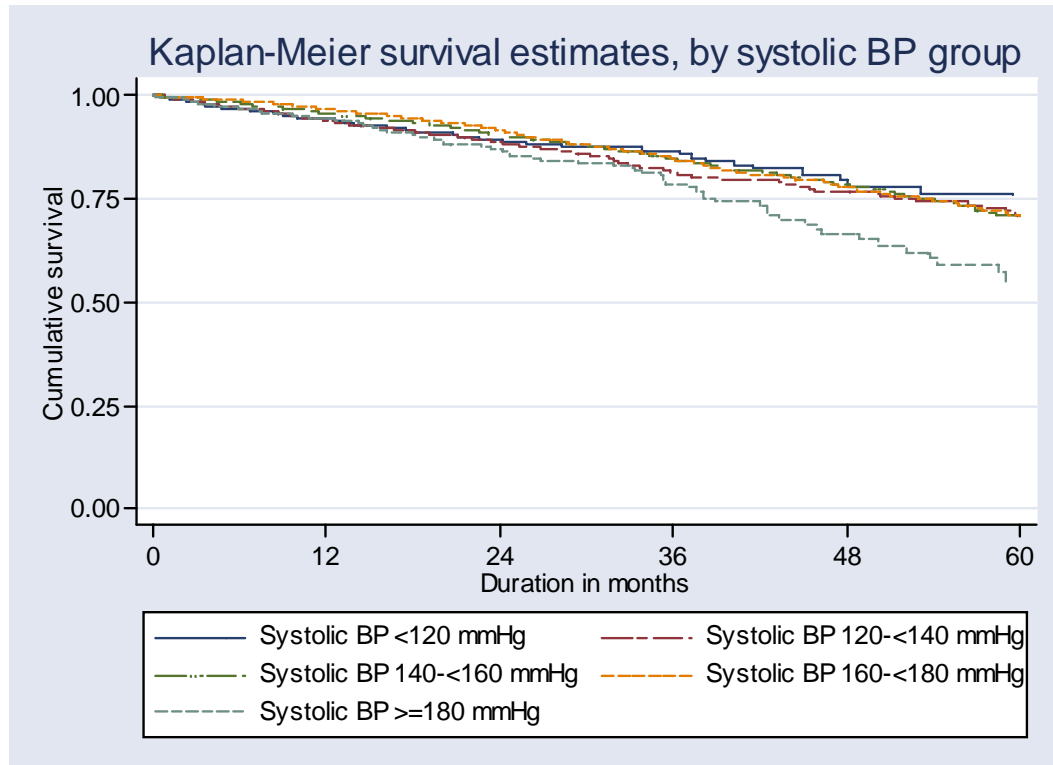


Table .9.7: Distribution of Diastolic Blood Pressure (mmHg), HD patients 1993-2002

Year	No of subjects	Mean	SD	Median	LQ	UQ	% patients <70 mmHg	% patients 70- <80 mmHg	% patients 80-<90 mmHg	% patients 90-<100 mmHg	% patients ≥100 mmHg
1993	715	88.5	15.5	86.7	79.9	95	7	18	34	23	18
1994	937	85.3	11.3	85.3	79	91.9	8	20	38	24	10
1995	1019	84.3	11.2	84.2	77.5	90.9	8	23	38	22	8
1996	1239	84.4	10.9	84.2	77.7	90.8	9	23	37	22	8
1997	1662	83.7	10.9	84.2	77	90.7	10	23	38	22	6
1998	2109	83.5	10.7	83.9	76.9	90.6	10	24	38	23	5
1999	2967	83.5	10.5	83.5	77.1	90	10	24	40	21	6
2000	4312	82.2	10.4	82.3	75.7	89	11	28	39	18	4
2001	5148	81.6	10.4	81.7	75	88.3	12	30	37	17	4
2002	5590	81.1	10.4	81.3	74.4	88	13	30	37	16	3

Figure .9.7: Distribution of Diastolic Blood Pressure (mmHg), HD patients 1993-2002

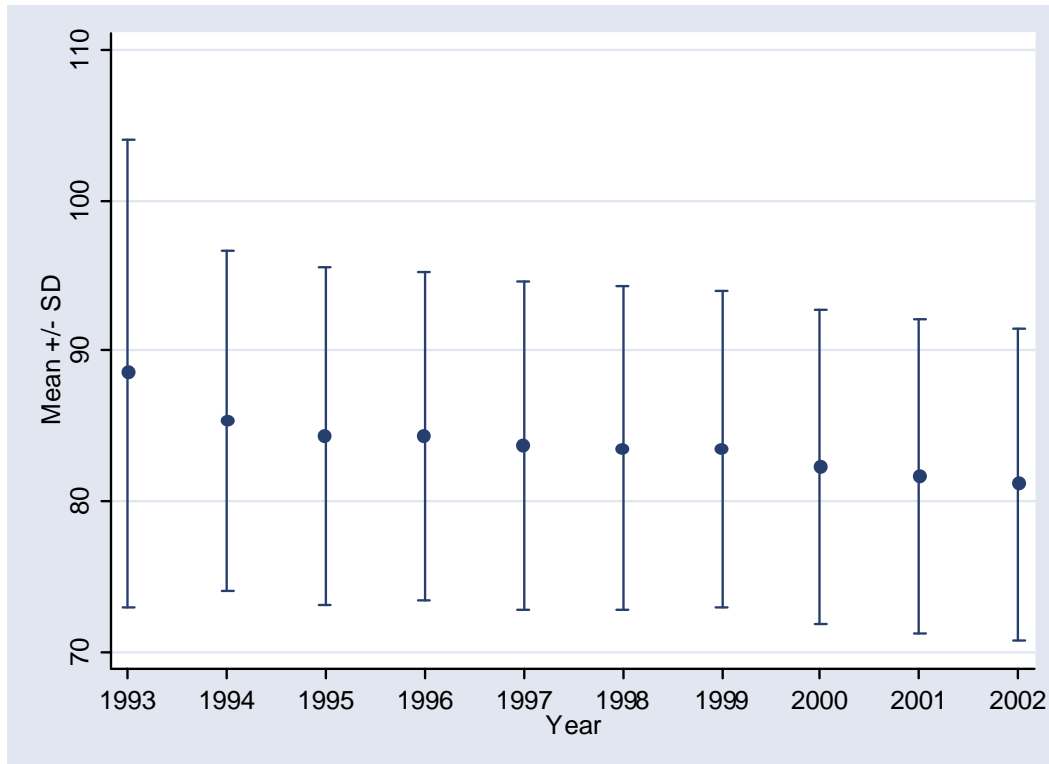


Table .9.8: Distribution of Diastolic Blood Pressure in relation to Age, HD patients 1993-2002

Year		Age group (years)							
		<20		20-39		40-59		≥60	
1993	Mean ± SD	84.4	± 16	89.9	± 15.5	88.2	± 15.4	82.9	± 15.2
	Median ± IQR	80	± 18	89.2	± 17.9	86	± 12.7	80.3	± 11.6
1994	Mean ± SD	82.8	± 10	87.6	± 11.7	84.3	± 10.8	79.6	± 9.2
	Median ± IQR	82.5	± 11.6	87.9	± 15	84.5	± 10.9	78	± 12.5
1995	Mean ± SD	81.6	± 15.5	86.2	± 11.9	83.6	± 10.3	79.6	± 8.8
	Median ± IQR	80.7	± 19.3	86.7	± 14.3	84	± 12.5	79.1	± 10
1996	Mean ± SD	82.9	± 12	86	± 11.7	83.8	± 10	79.9	± 9.5
	Median ± IQR	82.4	± 15.4	86.1	± 14.5	83.8	± 11.8	79.7	± 14.7
1997	Mean ± SD	82.3	± 12.8	85.4	± 11.4	83.7	± 10.1	77.9	± 9.5
	Median ± IQR	84.4	± 16.6	86	± 13.5	84.2	± 12.3	78.9	± 13.5
1998	Mean ± SD	81.3	± 13.3	85.6	± 11.1	83.6	± 10	77.2	± 9.2
	Median ± IQR	81.3	± 18.9	86.5	± 13	83.7	± 12.2	76.9	± 13.1
1999	Mean ± SD	80.9	± 13.4	85.8	± 10.9	83.3	± 10	79.4	± 9.2
	Median ± IQR	82.7	± 20.2	86.1	± 12.7	83.5	± 12.7	80	± 10.9
2000	Mean ± SD	80.6	± 12.3	85.5	± 10.5	82.2	± 9.8	77.5	± 9.4
	Median ± IQR	80.8	± 18.9	85.9	± 12.8	82.5	± 12.6	77.8	± 11.7
2001	Mean ± SD	81.2	± 12.3	85.1	± 10.8	81.7	± 9.8	77	± 9.4
	Median ± IQR	81.7	± 16	85.6	± 13.1	81.7	± 12.6	76.8	± 11.8
2002	Mean ± SD	81.8	± 12.8	85.2	± 10.7	81.3	± 9.6	76	± 9.2
	Median ± IQR	83.8	± 16.4	85.6	± 13.5	81.5	± 12.2	75.8	± 12

Table .9.9: Distribution of Diastolic Blood Pressure in relation to Gender, HD patients 1993-2002

Year		Gender			
		Male		Female	
1993	Mean $\pm$ SD	89.7	$\pm$ 16.4	86.2	$\pm$ 13.5
	Median $\pm$ IQR	87.5	$\pm$ 16.3	85.5	$\pm$ 15.2
1994	Mean $\pm$ SD	86.1	$\pm$ 11.6	83.9	$\pm$ 10.7
	Median $\pm$ IQR	85.8	$\pm$ 13.8	84.1	$\pm$ 13.2
1995	Mean $\pm$ SD	85.5	$\pm$ 11.6	82.2	$\pm$ 10.2
	Median $\pm$ IQR	85.5	$\pm$ 14	81.7	$\pm$ 13
1996	Mean $\pm$ SD	85.1	$\pm$ 11.2	83.1	$\pm$ 10.3
	Median $\pm$ IQR	85.4	$\pm$ 13.3	83.1	$\pm$ 12.8
1997	Mean $\pm$ SD	84.5	$\pm$ 11.1	82.5	$\pm$ 10.5
	Median $\pm$ IQR	85	$\pm$ 12.8	82.5	$\pm$ 12.9
1998	Mean $\pm$ SD	84.2	$\pm$ 10.8	82.4	$\pm$ 10.4
	Median $\pm$ IQR	84.8	$\pm$ 13.7	82.5	$\pm$ 13.8
1999	Mean $\pm$ SD	84.3	$\pm$ 10.5	82.2	$\pm$ 10.4
	Median $\pm$ IQR	84.3	$\pm$ 13.1	82.5	$\pm$ 13.1
2000	Mean $\pm$ SD	83.1	$\pm$ 10.4	81.1	$\pm$ 10.3
	Median $\pm$ IQR	83	$\pm$ 13.6	81.5	$\pm$ 12.9
2001	Mean $\pm$ SD	82.6	$\pm$ 10.6	80.4	$\pm$ 10.1
	Median $\pm$ IQR	82.6	$\pm$ 13.8	80.5	$\pm$ 12.9
2002	Mean $\pm$ SD	82.1	$\pm$ 10.6	79.9	$\pm$ 10
	Median $\pm$ IQR	82.3	$\pm$ 14.1	80	$\pm$ 13.2

Table .9.10: Distribution of Diastolic Blood Pressure in relation to Diabetes mellitus, HD patients 1993-2002

Year		Diabetes mellitus			
		Without DM		With DM	
1993	Mean $\pm$ SD	88.5	$\pm$ 15	88.7	$\pm$ 19.1
	Median $\pm$ IQR	87	$\pm$ 15.3	84	$\pm$ 13.8
1994	Mean $\pm$ SD	86	$\pm$ 11.4	81.2	$\pm$ 9.9
	Median $\pm$ IQR	85.8	$\pm$ 12.8	80.8	$\pm$ 13.3
1995	Mean $\pm$ SD	84.8	$\pm$ 11.4	81.6	$\pm$ 9.4
	Median $\pm$ IQR	85	$\pm$ 13.7	80.8	$\pm$ 13.3
1996	Mean $\pm$ SD	84.8	$\pm$ 11	82.1	$\pm$ 10
	Median $\pm$ IQR	84.9	$\pm$ 13	82.5	$\pm$ 14
1997	Mean $\pm$ SD	84.2	$\pm$ 11	81.7	$\pm$ 10
	Median $\pm$ IQR	84.9	$\pm$ 13.2	82	$\pm$ 12.8
1998	Mean $\pm$ SD	84.3	$\pm$ 10.7	80.7	$\pm$ 10.2
	Median $\pm$ IQR	85	$\pm$ 13.7	80.8	$\pm$ 12.6
1999	Mean $\pm$ SD	84.2	$\pm$ 10.6	81.2	$\pm$ 10
	Median $\pm$ IQR	84.4	$\pm$ 12.6	81.3	$\pm$ 12.3
2000	Mean $\pm$ SD	83.2	$\pm$ 10.6	80	$\pm$ 9.5
	Median $\pm$ IQR	83.3	$\pm$ 13.3	80	$\pm$ 12.7
2001	Mean $\pm$ SD	82.6	$\pm$ 10.6	79.6	$\pm$ 9.7
	Median $\pm$ IQR	82.9	$\pm$ 13.8	79.7	$\pm$ 11.8
2002	Mean $\pm$ SD	82.2	$\pm$ 10.6	79	$\pm$ 9.5
	Median $\pm$ IQR	82.2	$\pm$ 13.9	79.3	$\pm$ 12.5

Table .9.11: Unadjusted five-year patient survival in relation to Diastolic Blood Pressure, HD patients 1997-2002

Diastolic BP	<70 mmHg		70-<80 mmHg		80-<90 mmHg		90-<100 mmHg		≥100 mmHg	
Interval (months)	% survival	SE	% survival	SE	% survival	SE	% survival	SE	% survival	SE
6	95	1	97	0	97	0	98	1	94	2
12	90	1	94	1	94	1	94	1	90	2
24	81	2	86	1	88	1	90	1	75	4
36	73	2	78	1	82	1	82	2	66	4
48	64	3	71	2	76	1	76	2	64	5
60	62	3	62	2	69	2	71	2	61	6

SE=standard error

Figure .9.11: Unadjusted five-year patient survival in relation to Diastolic Blood Pressure, HD patients 1997-2002

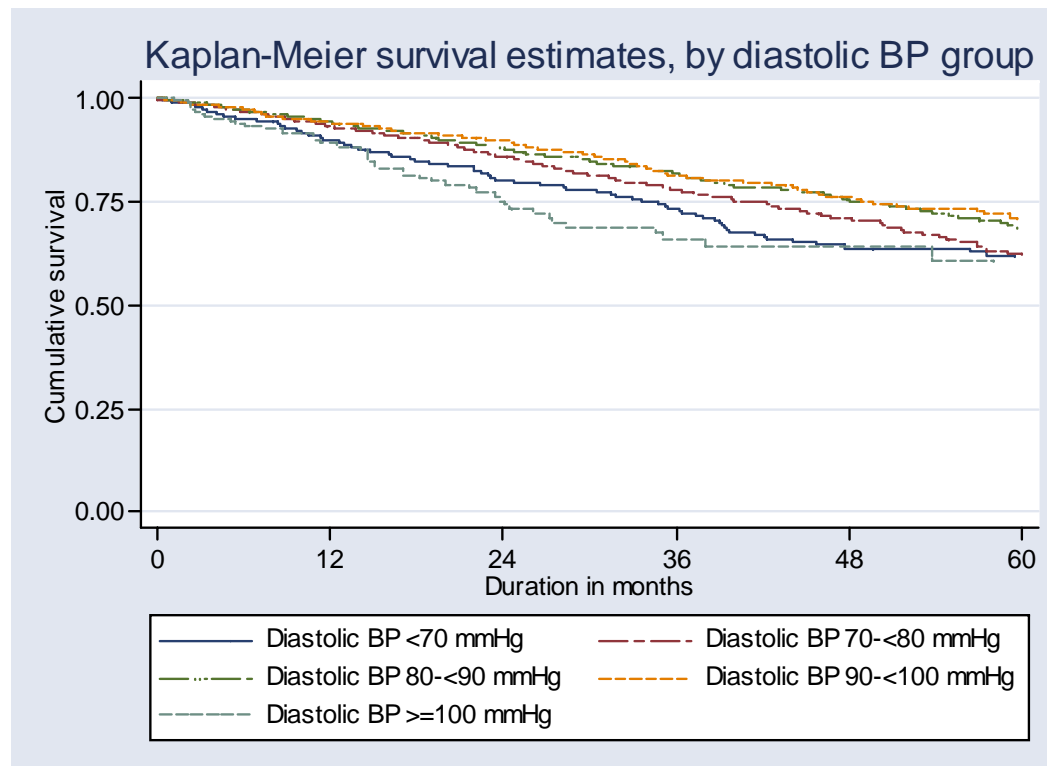




Table .9.12: Adjusted five-year patient survival in relation to Diastolic Blood Pressure, HD patients 1997-2002 (Adjusted for age, gender, primary diagnosis and time on RRT)

Diastolic BP	n	Hazard ratio	95% CI	p-value
<70 mmHg	723	1.17	(0.97, 1.41)	0.101
70-<80 mmHg	1862	0.93	(0.81, 1.08)	0.364
80-<90 mmHg	2307	1.00	-	-
90-<100 mmHg	959	1.27	(1.05, 1.53)	0.012
≥100 mmHg	218	2.80	(2.07, 3.80)	0.000

Figure .9.12: Adjusted five-year patient survival in relation to Diastolic Blood Pressure, HD patients 1997-2002 (Adjusted for age, gender, primary diagnosis and time on RRT)

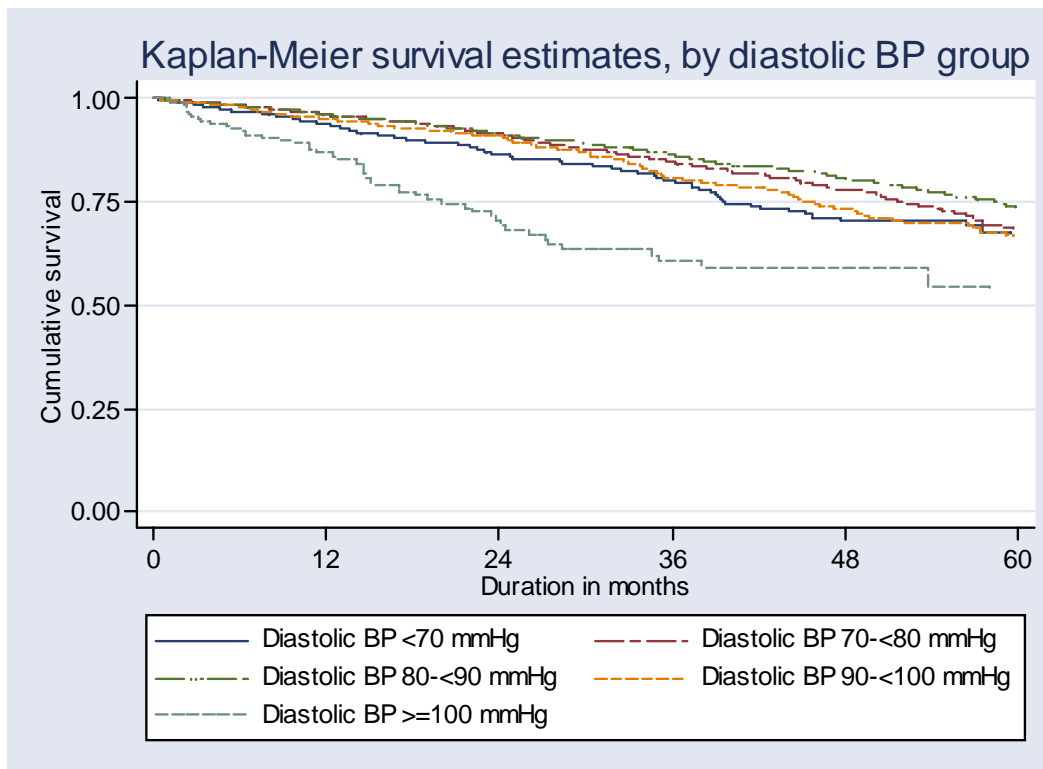


Table .9.13: Distribution of Systolic Blood Pressure (mmHg), CAPD patients 1993-2002

Year	No of subjects	Mean	SD	Median	LQ	UQ	% patients <120 mmHg	% patients 120-<140 mmHg	% patients 140-<160 mmHg	% patients 160-<180 mmHg	% patients ≥180 mmHg
1993	97	143.1	23.1	144	130	157.1	12	29	38	14	6
1994	112	143.4	23.1	143.5	128.2	155.9	15	27	35	16	7
1995	245	141.3	21.9	140.8	129	155	12	34	34	16	3
1996	358	142.5	21.8	142.9	128	158.3	15	28	34	18	4
1997	469	142.7	20.3	142.9	128.3	156	13	31	37	17	3
1998	519	141	21.2	140	126.4	157.5	16	34	29	18	3
1999	576	141	19.8	140	127.2	156	14	35	34	15	2
2000	638	137.2	20.4	136.1	123.3	150	18	39	29	13	2
2001	739	139	20.2	137.5	125.8	151.7	16	38	30	13	3
2002	841	139.8	20.5	140	127.1	151.8	14	36	34	12	4

Figure .9.13: Distribution of Systolic Blood Pressure (mmHg), CAPD patients 1993-2002

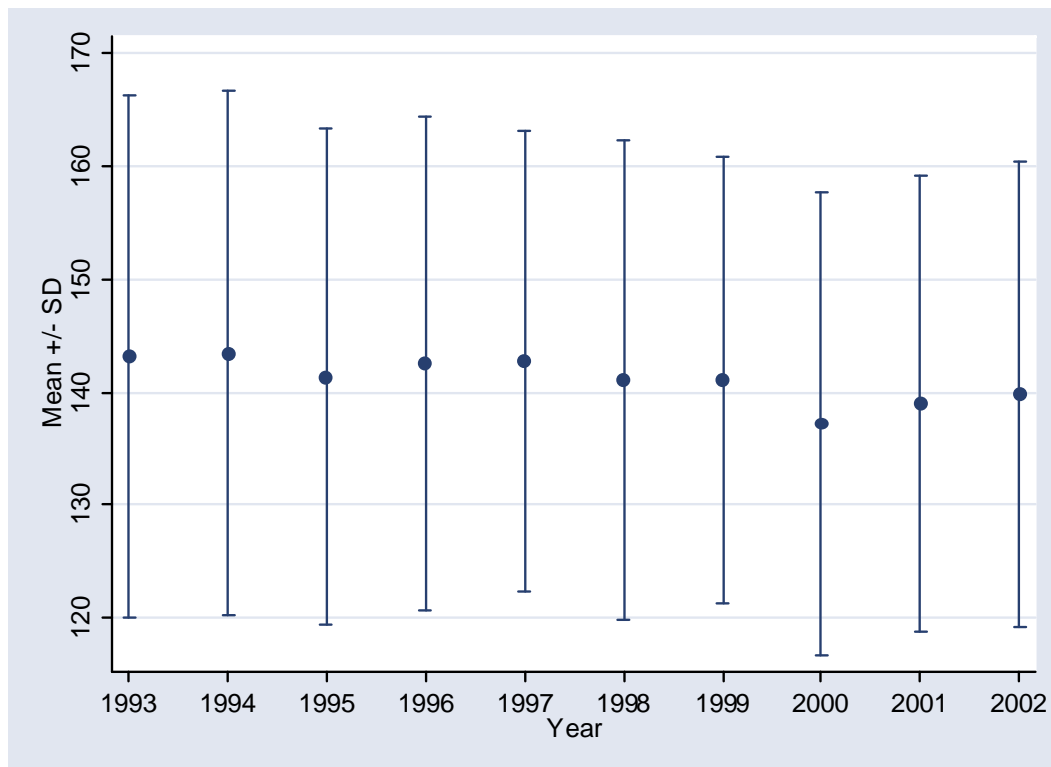


Table .9.14: Distribution of Systolic Blood Pressure in relation to Age, CAPD patients 1993-2002

Year		Age group (years)							
		<20		20-39		40-59		≥60	
1993	Mean ± SD	119.4	20.3	140	20	149.8	23.1	140.1	15.3
	Median ± IQR	116.7	27.6	145.4	25.2	147.1	35.6	142	10.2
1994	Mean ± SD	116.3	13.7	144.2	17.6	150.5	22.9	134.8	17.7
	Median ± IQR	116	22	141.5	18.3	151	31.9	134	23.7
1995	Mean ± SD	126.9	16.8	139.2	18.1	143.7	23.8	143.1	19.2
	Median ± IQR	125	27.2	137	19.1	145.7	28	138	29.8
1996	Mean ± SD	121.7	14.9	140.4	18.5	149.2	21.9	140.6	19.5
	Median ± IQR	120.9	18.9	140.4	24.3	152	28.8	141	27.2
1997	Mean ± SD	125.4	18.6	142.5	16.6	146.8	20.7	144.4	18.8
	Median ± IQR	123.8	19.3	143.5	21.1	146.9	27	145	27.5
1998	Mean ± SD	120.8	14.3	140.3	18.2	147.5	20.7	142.6	20.5
	Median ± IQR	119.4	20.5	137.1	22.9	148.2	28.7	143.4	28.8
1999	Mean ± SD	124.4	14.9	141.3	18.5	145.6	18.8	144.7	20
	Median ± IQR	121.5	14.2	140.7	27.7	144.5	25.5	145.8	26
2000	Mean ± SD	122.9	14.6	137.1	18	141.5	20.9	141.5	20.9
	Median ± IQR	123.3	14.5	135	21.6	141.1	28.4	145	26.1
2001	Mean ± SD	127.6	16.1	137.9	18.6	142.6	21.7	142.5	18.3
	Median ± IQR	126.7	18.5	134.7	22.2	143.6	26.8	140.2	27.1
2002	Mean ± SD	125.7	17.5	138.9	18.5	144.1	20.4	144.7	19.9
	Median ± IQR	127.2	19.1	139.3	22.1	143.3	24.4	145.8	29.9

Table .9.15: Distribution of Systolic Blood Pressure in relation to Gender, CAPD patients 1993-2002

Year		Gender			
		Male		Female	
1993	Mean $\pm$ SD	146.3	19.8	140.7	25.2
	Median $\pm$ IQR	143.4	23.3	144.2	30
1994	Mean $\pm$ SD	141.6	21.9	145.4	24.5
	Median $\pm$ IQR	141.5	27	145.7	31.7
1995	Mean $\pm$ SD	141.3	21.9	141.4	22.1
	Median $\pm$ IQR	140.8	25.2	140.8	29.2
1996	Mean $\pm$ SD	143.6	22.5	141.3	21
	Median $\pm$ IQR	145.6	29.8	140.8	30.6
1997	Mean $\pm$ SD	142.1	20.7	143.2	20
	Median $\pm$ IQR	143.9	27.7	141.5	28
1998	Mean $\pm$ SD	141.4	22.5	140.6	19.9
	Median $\pm$ IQR	140	32.8	139	28.9
1999	Mean $\pm$ SD	140.4	21.2	141.5	18.4
	Median $\pm$ IQR	140	29.2	140	28.7
2000	Mean $\pm$ SD	139	21	135.5	19.7
	Median $\pm$ IQR	138.3	28.2	134.3	24.9
2001	Mean $\pm$ SD	140.7	20	137.5	20.3
	Median $\pm$ IQR	140	24.6	134.7	25.9
2002	Mean $\pm$ SD	141.7	20.1	138.1	20.8
	Median $\pm$ IQR	142.5	22.5	135.9	26.3

Table .9.16: Distribution of Systolic Blood Pressure in relation to Diabetes mellitus, CAPD patients 1993-2002

Year		Diabetes mellitus			
		Without DM		With DM	
1993	Mean $\pm$ SD	137.9	23.7	155.5	16
	Median $\pm$ IQR	135	26.3	150	24.1
1994	Mean $\pm$ SD	141.3	24.1	149.6	19.3
	Median $\pm$ IQR	142	29.8	150	27.2
1995	Mean $\pm$ SD	139.1	22.7	145.6	19.7
	Median $\pm$ IQR	138.8	25.2	147.8	27.7
1996	Mean $\pm$ SD	138.6	22.1	150.6	19
	Median $\pm$ IQR	137.5	29	153.3	23.2
1997	Mean $\pm$ SD	138.7	20.4	150.4	17.9
	Median $\pm$ IQR	137.6	26.9	152	22
1998	Mean $\pm$ SD	137.2	21.2	148.9	19
	Median $\pm$ IQR	135.5	27.5	150.8	26.8
1999	Mean $\pm$ SD	137.5	19.7	148.7	17.7
	Median $\pm$ IQR	136.3	26.7	150	24.3
2000	Mean $\pm$ SD	133.5	19.5	145.9	19.8
	Median $\pm$ IQR	133.3	23	145.7	28.5
2001	Mean $\pm$ SD	135.5	19.6	146.5	19.4
	Median $\pm$ IQR	133.8	25.8	146.7	28.4
2002	Mean $\pm$ SD	136	19.9	147.7	19.7
	Median $\pm$ IQR	135.6	24.1	146.8	26.8

Table .9.17: Unadjusted five-year patient survival in relation to Systolic Blood Pressure, CAPD patients 1997-2002

Systolic BP	<120 mmHg		120-<140 mmHg		140-<160 mmHg		160-<180 mmHg		≥180 mmHg	
	Interval (months)	% survival	SE	% survival	SE	% survival	SE	% survival	SE	% survival
6	93	2	95	1	96	1	93	2	100	-
12	91	3	91	1	91	1	84	3	88	12
24	82	4	78	2	74	3	71	5	88	12
36	74	5	69	3	52	4	50	6	58	25
48	65	9	62	4	44	4	33	7	29	24
60	55	12	57	4	35	5	33	7	29	24

SE=standard error



Figure .9.17: Unadjusted five-year patient survival in relation to Systolic Blood Pressure, CAPD patients 1997-2002

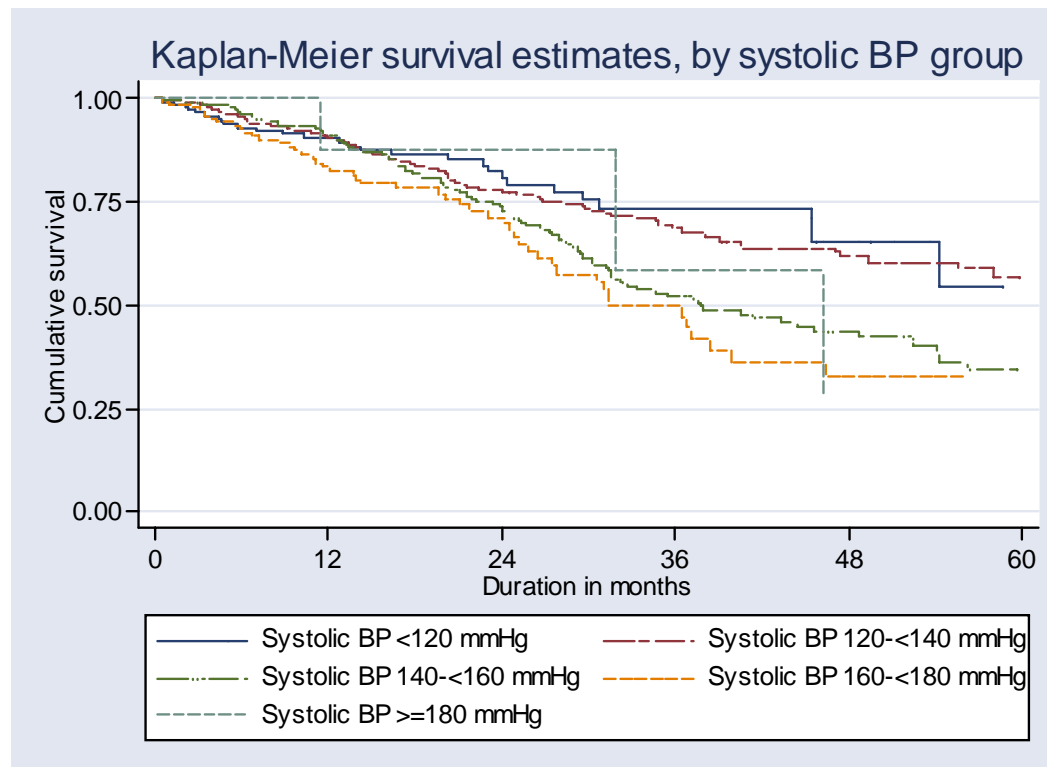


Table .9.18: Adjusted five-year patient survival in relation to Systolic Blood Pressure, CAPD patients 1997-2002 (Adjusted for age, gender, primary diagnosis and time on RRT)

Systolic BP	n	Hazard ratio	95% CI	p-value
<120 mmHg	161	1.33	(0.86, 2.05)	0.203
120-<140 mmHg	449	0.94	(0.71, 1.22)	0.627
140-<160 mmHg	432	1.00	-	-
160-<180 mmHg	147	1.04	(0.75, 1.46)	0.800
≥180 mmHg	18	0.82	(0.26, 2.59)	0.737

Figure .9.18: Adjusted five-year patient survival in relation to Systolic Blood Pressure, CAPD patients 1997-2002 (Adjusted for age, gender, primary diagnosis and time on RRT)

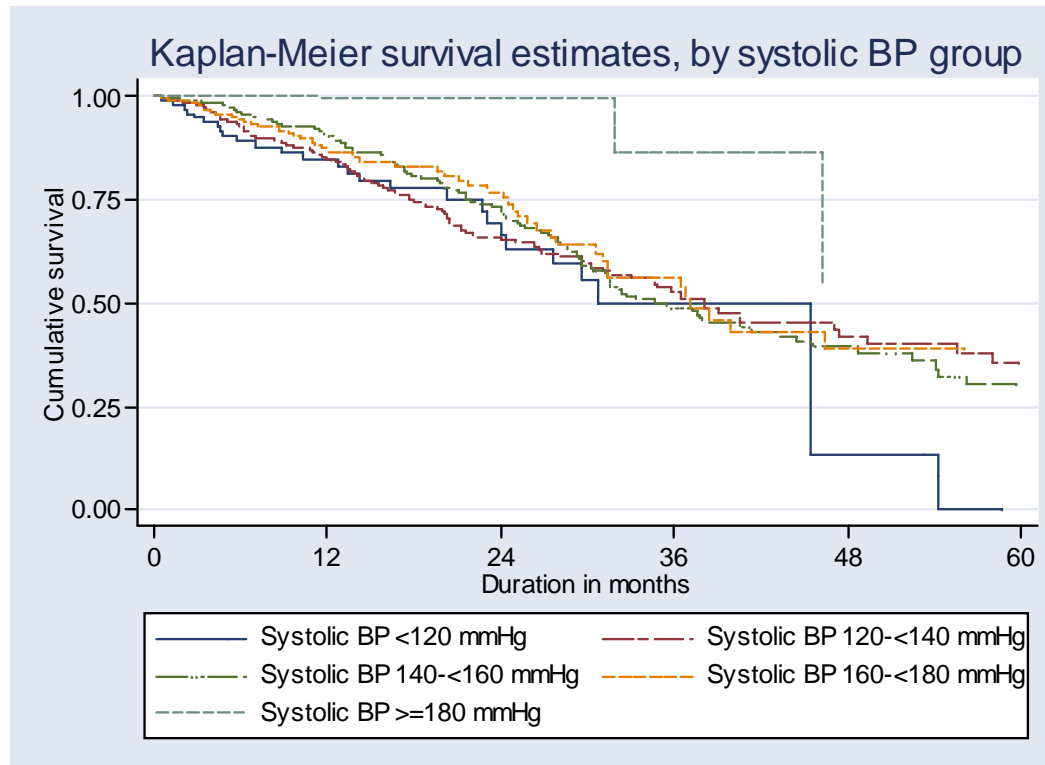


Table .9.19: Distribution of Diastolic Blood Pressure (mmHg), CAPD patients 1993-2002

Year	No of subjects	Mean	SD	Median	LQ	UQ	% patients <70 mmHg	% patients 70- <80 mmHg	% patients 80-<90 mmHg	% patients 90-<100 mmHg	% patients ≥100 mmHg
1993	98	86.5	12.4	85.4	80	93	3	17	42	30	8
1994	112	85.9	10.6	85	78.8	92.4	4	23	36	27	10
1995	244	83.9	10.9	84.2	78	90.3	9	22	39	25	7
1996	358	84.1	10.9	85	76.2	90.2	8	24	37	23	8
1997	468	85.3	10.6	85.9	79.9	91.4	6	19	41	26	8
1998	519	84.3	11.3	85	77.1	90.1	8	24	36	24	8
1999	576	84	10.9	84.2	77.9	90	9	20	44	20	7
2000	638	82.9	11	83.3	76.6	89.6	10	24	41	20	5
2001	739	83.1	10.9	82.7	76.4	89.6	9	29	38	18	6
2002	841	82.8	10.8	83.4	76.1	90	11	24	41	21	5

Figure .9.19: Distribution of Diastolic Blood Pressure (mmHg), CAPD patients 1993-2002

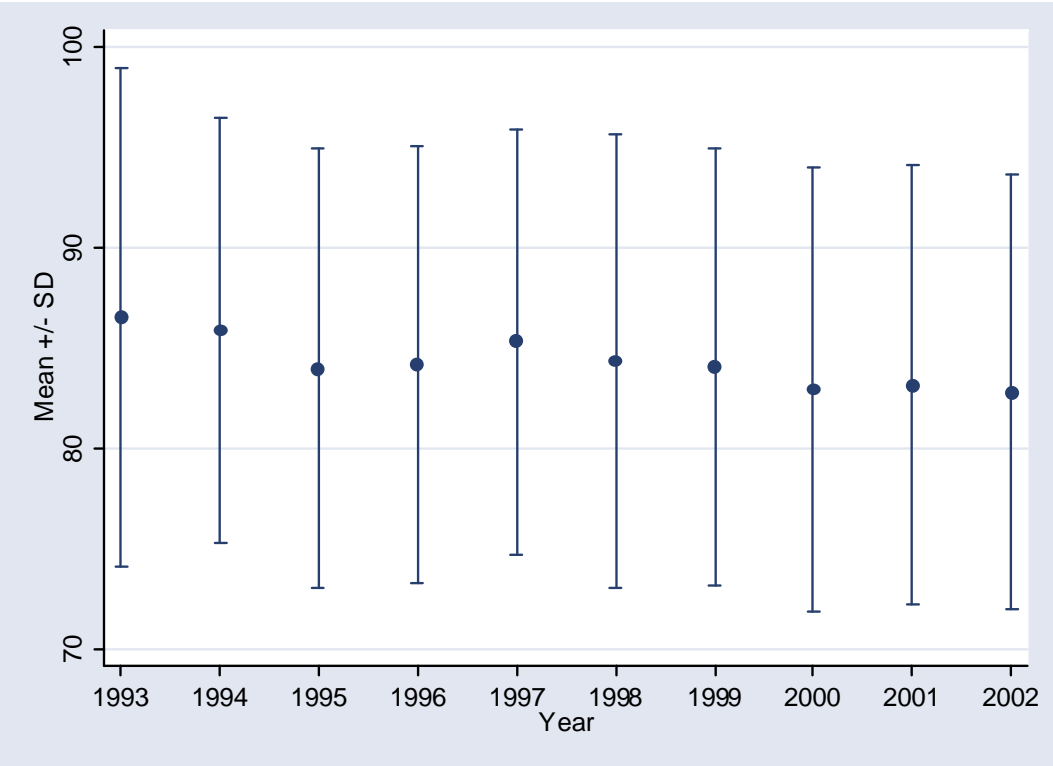


Table .9.20: Distribution of Diastolic Blood Pressure in relation to Age, CAPD patients 1993-2002

Year		Age group (years)							
		<20		20-39		40-59		≥60	
1993	Mean ± SD	78.7	14.6	91.3	10.9	88.2	12.2	79.5	8.3
	Median ± IQR	75.6	17.8	91.5	12	86.3	11.1	78.4	13.3
1994	Mean ± SD	78	7.1	93.3	10.1	87.2	9	76	10.1
	Median ± IQR	80	6.9	90	11.7	87.8	14.3	78.1	14
1995	Mean ± SD	83.6	9.5	89.5	11.6	84	11.2	79.9	8.5
	Median ± IQR	83.3	8.3	90	7.6	84.5	14.2	79.8	9
1996	Mean ± SD	79.3	8.7	90.1	10.5	85.8	10.5	78.1	9.3
	Median ± IQR	79.2	12.5	90	13.1	87	12.6	79.1	11.9
1997	Mean ± SD	81.7	9.8	90.8	9.8	85.7	10.2	80.1	9.5
	Median ± IQR	81.7	15	90	11.8	86.8	11.3	80	12.7
1998	Mean ± SD	78.2	9.6	90	11	85.4	10.1	78.9	11.2
	Median ± IQR	78.8	13.8	89	12	86.3	11.5	78.4	15.7
1999	Mean ± SD	81.1	11.2	89.5	9.7	83.8	10.3	79.6	10.4
	Median ± IQR	80	14.1	89	11.4	83.5	11.1	80.3	14.2
2000	Mean ± SD	79.3	10.6	87.5	9.8	82.9	11.1	80.1	10.4
	Median ± IQR	79.6	12.2	87.5	11.8	83.5	11.6	80	14
2001	Mean ± SD	82.7	11.9	86.4	10	83.2	10.8	79	10.1
	Median ± IQR	82.4	12.6	86.4	13.4	82.8	12	78.7	12.4
2002	Mean ± SD	80.3	12.2	87	10.6	82.9	9.9	79.1	9.9
	Median ± IQR	82.5	17.8	87.5	11.8	83.3	12.3	80	12.4

Table .9.21: Distribution of Diastolic Blood Pressure in relation to Gender, CAPD patients 1993-2002

Year		Gender			
		Male		Female	
1993	Mean $\pm$ SD	87.7	8.5	85.5	14.8
	Median $\pm$ IQR	86.7	9.7	84.2	17.8
1994	Mean $\pm$ SD	86.9	10.4	84.7	10.8
	Median $\pm$ IQR	86.7	13.2	84.3	12
1995	Mean $\pm$ SD	84.7	10.6	83.1	11.2
	Median $\pm$ IQR	84	11.7	84.5	14.1
1996	Mean $\pm$ SD	84.6	11.1	83.6	10.7
	Median $\pm$ IQR	85	13.7	85	14
1997	Mean $\pm$ SD	85.5	11	85	10.2
	Median $\pm$ IQR	86	11.4	85.9	13.2
1998	Mean $\pm$ SD	84.9	12.2	83.8	10.4
	Median $\pm$ IQR	85	14.3	85	12.9
1999	Mean $\pm$ SD	83.9	11.4	84.1	10.4
	Median $\pm$ IQR	84.8	12.8	84	11.8
2000	Mean $\pm$ SD	83.8	11.6	82.1	10.3
	Median $\pm$ IQR	84.5	11.9	82.2	14
2001	Mean $\pm$ SD	83.5	11.2	82.8	10.7
	Median $\pm$ IQR	83.7	13.2	82.5	13.1
2002	Mean $\pm$ SD	83.5	10.7	82.1	10.9
	Median $\pm$ IQR	84.3	13.1	82.3	13.7

Table .9.22: Distribution of Diastolic Blood Pressure in relation to Diabetes mellitus, CAPD patients 1993-2002

Year		Diabetes mellitus			
		Without DM		With DM	
1993	Mean $\pm$ SD	86.9	13.9	85.4	8
	Median $\pm$ IQR	86.3	12.5	85	10
1994	Mean $\pm$ SD	86.4	10.7	84.3	10.5
	Median $\pm$ IQR	85.7	13.1	85	15.4
1995	Mean $\pm$ SD	84.6	11.5	82.7	9.5
	Median $\pm$ IQR	85	13.1	82.1	14.7
1996	Mean $\pm$ SD	84.8	11.4	82.8	9.8
	Median $\pm$ IQR	85.3	15.4	84	14.7
1997	Mean $\pm$ SD	86	11.2	83.8	9.1
	Median $\pm$ IQR	86.4	13.2	84.6	10.3
1998	Mean $\pm$ SD	85.4	11.9	82.2	9.6
	Median $\pm$ IQR	85.9	14.2	83.3	11.5
1999	Mean $\pm$ SD	85.2	11.4	81.6	9
	Median $\pm$ IQR	85.8	11.9	82	11.1
2000	Mean $\pm$ SD	83.6	11.8	81.4	8.8
	Median $\pm$ IQR	83.7	12.9	82.9	12.6
2001	Mean $\pm$ SD	84.4	11.1	80.3	10
	Median $\pm$ IQR	85	12.8	80	10.9
2002	Mean $\pm$ SD	84.3	11.1	79.6	9.5
	Median $\pm$ IQR	85	11.9	79.8	12.3



Table .9.23: Unadjusted five-year patient survival in relation to Diastolic Blood Pressure, CAPD patients 1997-2002

Diastolic BP	<70 mmHg		70-<80 mmHg		80-<90 mmHg		90-<100 mmHg		≥100 mmHg	
Interval (months)	% survival	SE	% survival	SE	% survival	SE	% survival	SE	% survival	SE
6	91	3	95	1	97	1	94	2	96	3
12	86	4	90	2	93	1	87	2	84	6
24	70	6	74	3	79	2	77	3	80	7
36	58	8	57	4	63	3	64	5	56	11
48	44	14	41	5	55	4	60	5	45	14
60	44	14	35	6	48	4	54	6	45	14

SE=standard error

Figure .9.23: Unadjusted five-year patient survival in relation to Diastolic Blood Pressure, CAPD patients 1997-2002

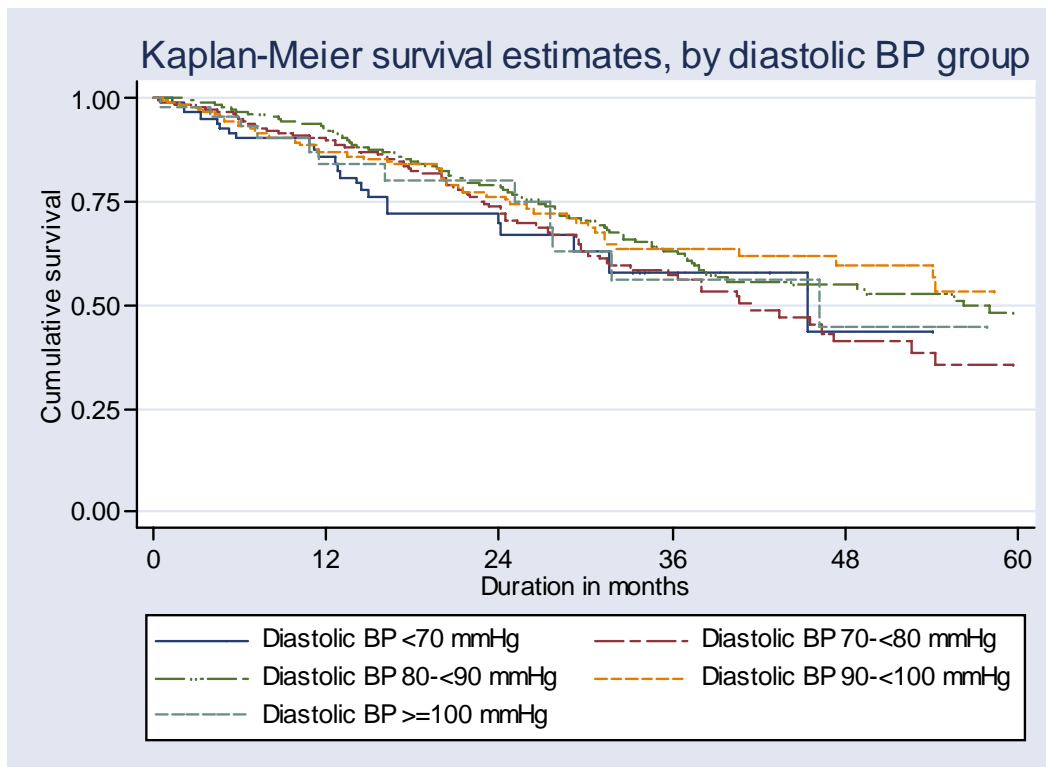


Table .9.24: Adjusted five-year patient survival in relation to Diastolic Blood Pressure, CAPD patients 1997-2002 (Adjusted for age, gender, primary diagnosis and time on RRT)

Diastolic BP	n	Hazard ratio	95% CI	p-value
<70 mmHg	99	1.32	(0.85, 2.07)	0.218
70-<80 mmHg	332	0.94	(0.71, 1.25)	0.684
80-<90 mmHg	495	1.00	-	-
90-<100 mmHg	227	1.43	(1.03, 1.98)	0.035
≥100 mmHg	53	2.05	(1.12, 3.74)	0.019

Figure .9.24: Adjusted five-year patient survival in relation to Diastolic Blood Pressure, CAPD patients 1997-2002 (Adjusted for age, gender, primary diagnosis and time on RRT)

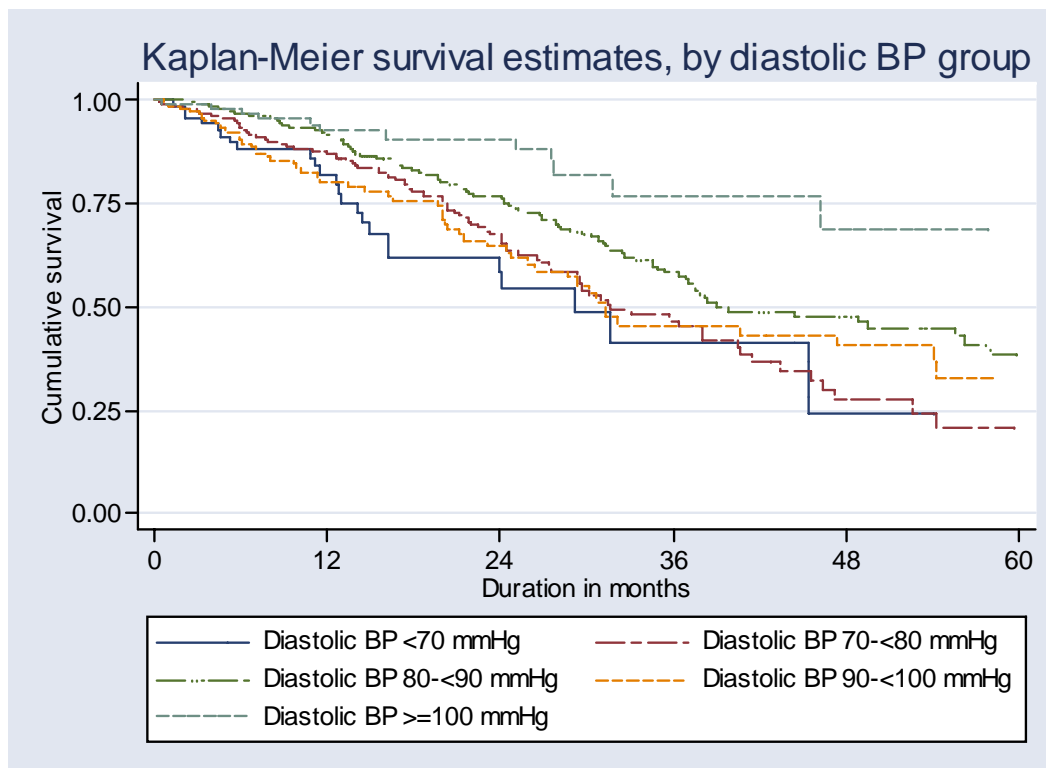


Table .9.25: Distribution of Pulse Pressure (mmHg), HD patients 1993-2002

Year	No of subjects	Mean	SD	Median	LQ	UQ	% patients < 50 mmHg	% patients 50-<60 mmHg	% patients 60-<70 mmHg	% patients 70-<80 mmHg	% patients ≥80 mmHg
1993	715	52.5	20	51.8	41.8	64.3	43	24	15	9	9
1994	937	57.3	16.7	55.2	45	67.5	35	25	19	11	11
1995	1019	58.1	16.8	56.7	45.8	68.8	35	23	19	12	11
1996	1239	57.8	16.6	55.8	46	68.1	35	24	20	11	11
1997	1661	60.8	17.3	59.2	48.3	71.7	28	23	22	13	14
1998	2109	62.6	17.3	61.1	50	73.3	24	23	21	16	16
1999	2967	65.2	17.4	63.5	53	76.2	19	22	23	17	20
2000	4312	65.8	17.5	64.3	53	77.3	19	22	22	17	21
2001	5148	67.1	18	65.5	53.8	79.3	17	21	21	17	24
2002	5590	68	17.9	66.5	55	79.9	16	20	21	18	25

Figure 9.25 : Distribution of Pulse Pressure (mmHg),HD patients 1993-2002



Table .9.26: Distribution of Pulse Pressure in relation to Age, HD patients 1993-2002

Year		Age group (years)							
		<20		20-39		40-59		≥60	
1993	Mean ± SD	44.1	11.2	46.6	17.4	57.2	20.8	66.6	19.8
	Median ± IQR	42.5	13.5	47.5	16.1	57	25.8	66.7	23.1
1994	Mean ± SD	48.2	10.2	51	13.7	61.9	17	69.9	16.9
	Median ± IQR	48.1	12	49.8	18.3	60.9	21.7	68	27.6
1995	Mean ± SD	47.4	10.2	52.1	13.9	62	16.8	70.6	17.9
	Median ± IQR	46.1	13.8	50.4	17.6	61.4	23	70.6	26.1
1996	Mean ± SD	47.5	12	51.7	13.1	61.3	17	72	16.2
	Median ± IQR	46.6	15.2	50	17	60	21.4	72.6	23.6
1997	Mean ± SD	49	11.1	52.7	13.1	65.4	17.4	71.6	17.2
	Median ± IQR	49.2	17.2	51.7	16.7	64.4	24.3	70	25.2
1998	Mean ± SD	49.9	11.6	54.5	13.4	66.6	17.1	73.5	17.7
	Median ± IQR	48.3	17.4	53.3	17.3	66.7	22.3	72.8	22.8
1999	Mean ± SD	51.4	12.5	56.8	13.3	68.8	16.8	74.9	18.6
	Median ± IQR	50.8	17.3	55.8	17.3	67.8	23	74.8	24.4
2000	Mean ± SD	51.6	12.8	57	13.6	68.4	17	74.5	17.9
	Median ± IQR	49.8	15.7	56.3	17.5	67.5	24	74.2	25.8
2001	Mean ± SD	51.1	11.1	58.1	14	69.7	17.5	74.6	18.4
	Median ± IQR	50.3	16.4	56.7	18	68.6	25	74.2	24.5
2002	Mean ± SD	51.8	12.5	58.5	13.5	70.5	17.4	75.3	18.6
	Median ± IQR	49.2	17	57.9	18	69.8	24.3	74.5	25.8

## Unadjusted five year patient survival in relation to Pulse Pressure, HD 1997-2002

Pulse Pressure	<50 mmHg		50-<60 mmHg		60-<70 mmHg		70-<80 mmHg		≥80 mmHg	
	Interval (months)	% survival	SE	% survival	SE	% survival	SE	% survival	SE	% survival
6	96	1	97	0	98	0	97	1	97	0
12	92	1	94	1	95	1	93	1	93	1
24	86	1	89	1	89	1	87	1	82	1
36	82	2	84	1	82	1	78	2	72	2
48	78	2	81	2	76	2	71	2	62	2
60	75	2	76	2	70	2	64	2	53	2

Table .9.28: Adjusted five-year patient survival in relation to Pulse Pressure, HD patients 1997-2002 (Adjusted for age, gender, primary diagnosis and time on RRT)

Pulse Pressure	n	Hazard ratio	95% CI	p-value
<50 mmHg	772	1.33	(1.06, 1.65)	0.012
50-<60 mmHg	1235	1.04	(0.85, 1.26)	0.718
60-<70 mmHg	1399	1.00	-	-
70-<80 mmHg	1214	0.95	(0.79, 1.13)	0.550
≥80 mmHg	1449	1.05	(0.88, 1.24)	0.581

Figure .9.28: Adjusted five-year patient survival in relation to Pulse Pressure, HD patients 1997-2002 (Adjusted for age, gender, primary diagnosis and time on RRT)

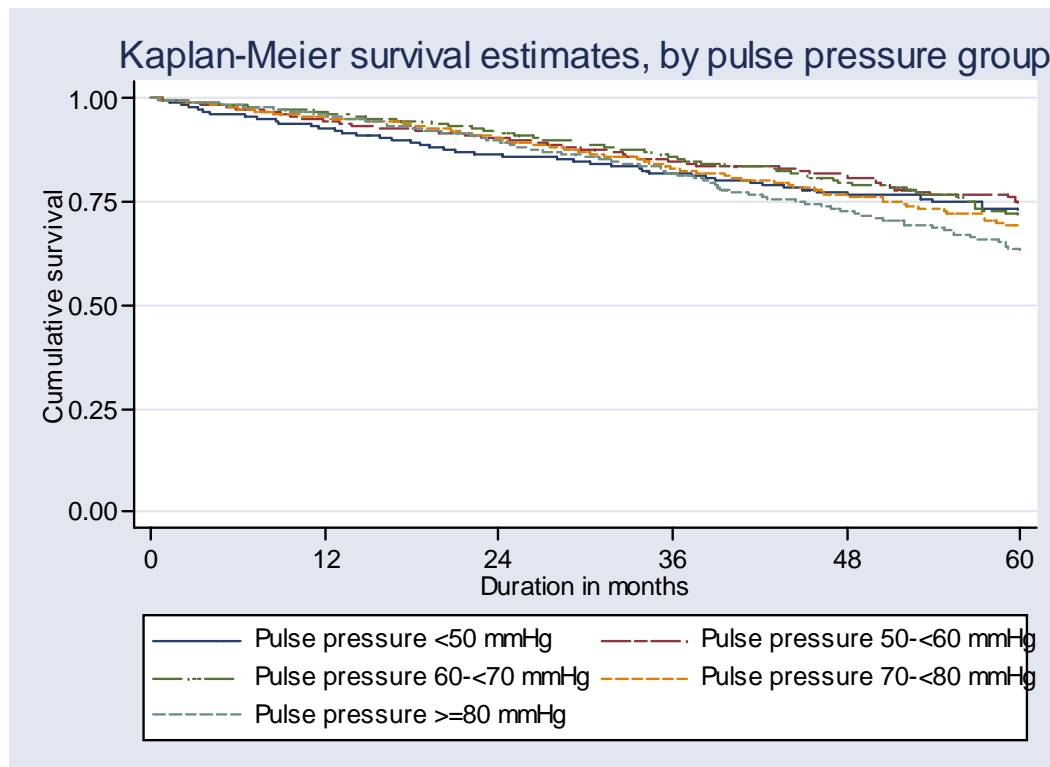




Figure .9.29: Distribution of Pulse Pressure (mmHg), CAPD patients 1993-2002

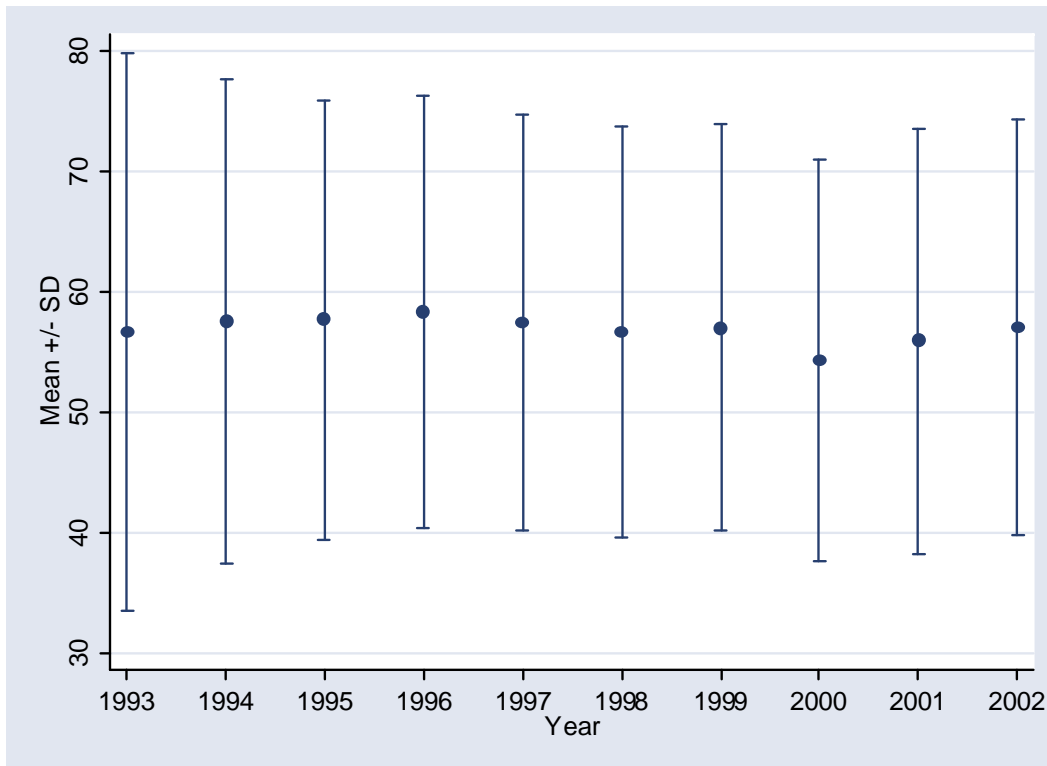


Table .9.30: Unadjusted five-year patient survival in relation to Pulse Pressure, CAPD patients 1997-2002

Pulse Pressure	<50 mmHg		50-<60 mmHg		60-<70 mmHg		70-<80 mmHg		≥80 mmHg	
	% survival	SE	% survival	SE	% survival	SE	% survival	SE	% survival	SE
Interval (months)										
6	96	1	95	1	95	1	93	2	99	1
12	92	1	89	2	90	2	86	3	91	4
24	82	2	79	3	70	4	67	5	70	7
36	76	3	68	4	45	5	31	6	56	9
48	70	4	59	5	41	5	16	5	28	10
60	65	4	46	7	37	6	8	6	28	10

SE=standard error

Table .9.31: Adjusted five-year patient survival in relation to Pulse Pressure, CAPD patients 1997-2002 (Adjusted for age, gender, primary diagnosis and time on RRT)

Pulse Pressure	n	Hazard ratio	95% CI	p-value
<50 mmHg	446	0.97	(0.68, 1.38)	0.872
50-<60 mmHg	294	0.83	(0.59, 1.16)	0.273
60-<70 mmHg	227	1.00	-	-
70-<80 mmHg	146	1.05	(0.75, 1.49)	0.763
≥80 mmHg	93	0.63	(0.39, 1.01)	0.055

Figure .9.31: Adjusted five-year patient survival in relation to Pulse Pressure, CAPD patients 1997-2002 (Adjusted for age, gender, primary diagnosis and time on RRT)

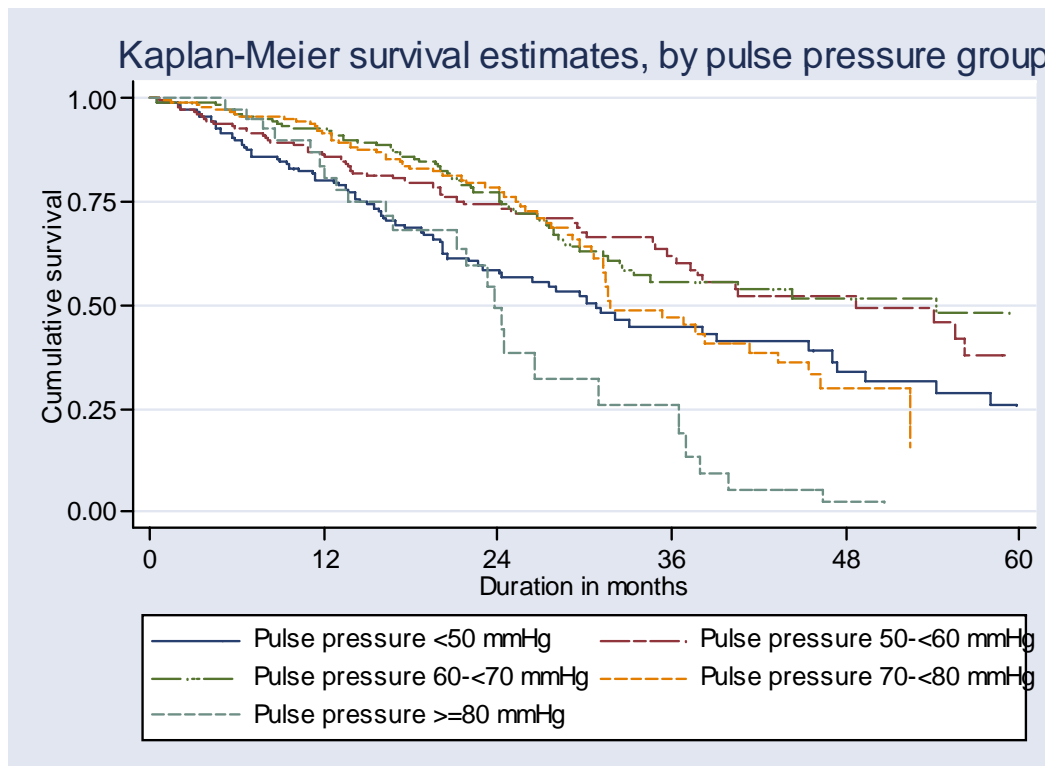


Table .9.32: Treatment for hypertension, HD patients 1993-2002

<b>Year</b>	<b>No.</b>	<b>% on anti-hypertensives</b>	<b>% on 1 anti-hypertensives</b>	<b>% on 2 anti-hypertensives</b>	<b>% on 3 anti-hypertensives</b>
1993	718	57	57	0	0
1994	963	57	36	16	5
1995	1034	59	34	19	6
1996	1256	58	34	18	6
1997	1697	61	34	21	6
1998	2142	63	36	20	7
1999	2998	67	36	23	8
2000	4395	67	39	21	7
2001	5196	67	37	23	7
2002	5674	67	35	24	8

Table .9.33: Treatment for hypertension, CAPD patients 1993-2002

<b>Year</b>	<b>No.</b>	<b>% on anti-hypertensives</b>	<b>% on 1 anti-hypertensives</b>	<b>% on 2 anti-hypertensives</b>	<b>% on 3 anti-hypertensives</b>
1993	102	70	70	0	0
1994	122	76	33	32	11
1995	256	79	39	28	13
1996	371	82	38	25	20
1997	477	83	32	33	18
1998	541	88	34	31	23
1999	610	82	30	33	19
2000	662	78	31	27	20
2001	781	76	31	28	18
2002	889	81	31	31	19

Table .9.34: Distribution of Cholesterol (mmol/L), HD patients 1993-2002

Year	No of subjects	Mean	SD	Median	LQ	UQ	% patients <3.5 mmol/L	% patients 3.5-<5.3 mmol/L	% patients 5.3-<6.2 mmol/L	% patients ≥6.2 mmol/L
1993	319	5.2	1.8	4.9	4.2	5.9	8	48	25	19
1994	461	4.9	1.3	4.9	4.1	5.7	10	52	23	15
1995	559	5.1	1.4	5	4.2	5.8	8	50	26	16
1996	661	5.1	1.4	5	4.2	5.9	10	49	22	19
1997	1160	5.1	1.4	5.1	4.2	5.9	8	49	24	19
1998	1167	5.1	1.3	5	4.2	5.8	8	53	22	17
1999	1873	5	1.3	4.9	4.1	5.7	10	54	20	15
2000	2959	5	1.2	4.9	4.2	5.8	8	53	23	16
2001	3900	5.1	1.3	4.9	4.2	5.8	8	52	24	16
2002	4417	5	1.2	4.9	4.2	5.7	9	54	24	13

Figure .9.34: Distribution of Cholesterol (mmol/L), HD patients 1993-2002





Table .9.35: Distribution of Cholesterol (mmol/L), CAPD patients 1993-2002

Year	No of subjects	Mean	SD	Median	LQ	UQ	% patients <3.5 mmol/L	% patients 3.5-<5.3 mmol/L	% patients 5.3-<6.2 mmol/L	% patients ≥6.2 mmol/L
1993	86	6.4	2.1	6	5.1	7.3	2	28	23	47
1994	113	6.3	1.7	6	5.3	6.9	0	26	28	46
1995	220	6.1	1.7	6	5	6.9	3	28	25	43
1996	318	6	1.5	5.9	5	6.8	3	30	29	39
1997	421	6.1	1.4	6	5.1	6.9	2	27	28	43
1998	348	6	1.4	5.9	5	6.8	3	29	28	41
1999	434	5.7	1.4	5.6	4.9	6.4	3	37	30	31
2000	526	5.9	1.6	5.7	4.9	6.7	3	31	30	36
2001	581	5.8	1.4	5.7	4.8	6.6	2	36	27	35
2002	764	5.6	1.4	5.5	4.6	6.5	4	38	28	29

Figure .9.35: Distribution of Cholesterol (mmol/L), CAPD patients 1993-2002

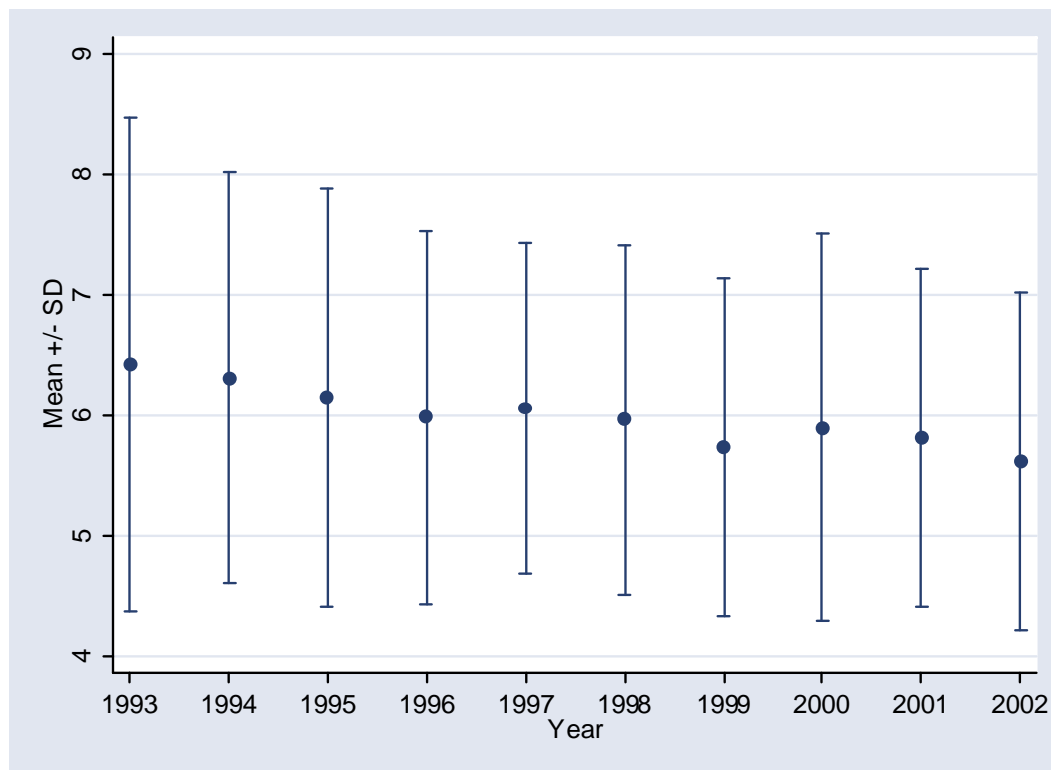


Table .9.36: Distribution of Cholesterol in relation to Age, HD patients 1993-2002

Year		Age group (years)							
		<20		20-39		40-59		≥60	
1993	Mean ± SD	5.2	3.4	5.1	1.9	5.3	1.5	5.2	1.8
	Median ± IQR	4.3	0.8	4.8	1.8	5.2	1.6	5.3	2.4
1994	Mean ± SD	4.2	1	4.9	1.2	5	1.3	5.2	1.4
	Median ± IQR	4.1	1.2	4.8	1.4	5.1	1.5	5.1	1.7
1995	Mean ± SD	4.5	0.9	4.8	1.2	5.3	1.6	5.3	1
	Median ± IQR	4.5	0.8	4.8	1.6	5.2	1.7	5.4	1.6
1996	Mean ± SD	4.4	0.9	4.8	1.3	5.4	1.5	5.4	1.3
	Median ± IQR	4.2	0.4	4.8	1.7	5.2	1.7	5.3	2.1
1997	Mean ± SD	4.4	1.5	5	1.4	5.3	1.4	5.3	1.2
	Median ± IQR	4.1	1.7	4.9	1.6	5.2	1.8	5.1	1.5
1998	Mean ± SD	4.5	1.5	4.9	1.2	5.3	1.3	5.3	1.3
	Median ± IQR	4.1	1.3	4.8	1.5	5.2	1.7	5.2	1.5
1999	Mean ± SD	4.4	1	4.8	1.2	5.1	1.3	5.1	1.3
	Median ± IQR	4.3	1.6	4.8	1.4	4.9	1.7	5	1.5
2000	Mean ± SD	4.3	1.5	4.9	1.2	5.1	1.2	5.1	1.3
	Median ± IQR	3.9	1.2	4.8	1.5	5	1.6	5	1.7
2001	Mean ± SD	4.5	1.4	4.9	1.2	5.1	1.3	5.1	1.3
	Median ± IQR	4.3	1.3	4.8	1.4	5.1	1.6	5.1	1.7
2002	Mean ± SD	4.4	1	4.8	1.2	5.1	1.2	5	1.2
	Median ± IQR	4.3	1.2	4.7	1.4	5	1.6	5	1.5

Table .9.37: Distribution of Cholesterol in relation to Age, CAPD patients 1993-2002

Year		Age group (years)							
		<20		20-39		40-59		≥60	
1993	Mean ± SD	5.2	1	5.7	2.2	6.8	2.1	6.7	1.8
	Median ± IQR	5.1	1.5	5.1	2.1	6.5	2.4	6	3.1
1994	Mean ± SD	5.8	1	5.8	1.1	6.4	1.7	6.9	2.5
	Median ± IQR	5.9	1.6	5.8	1.5	6	1.9	6.6	1.3
1995	Mean ± SD	6	1.7	5.5	1.4	6.4	1.9	6	1.4
	Median ± IQR	5.8	2.5	5.3	1.7	6.2	2	6.2	1.7
1996	Mean ± SD	5.8	1.8	5.7	1.5	6.1	1.6	5.9	1.4
	Median ± IQR	5.2	1.8	5.6	1.9	6	1.7	5.9	1.9
1997	Mean ± SD	5.9	1.3	5.7	1.3	6.2	1.4	6.3	1.4
	Median ± IQR	5.6	2	5.8	1.6	6.1	1.8	6.1	1.7
1998	Mean ± SD	6.3	1.7	5.8	1.2	6	1.6	5.8	1.3
	Median ± IQR	5.9	1.7	5.7	1.6	5.9	1.8	5.9	1.9
1999	Mean ± SD	5	1.7	5.7	1.4	5.9	1.3	5.7	1.3
	Median ± IQR	5.2	1.7	5.6	1.5	5.8	1.5	5.5	1.9
2000	Mean ± SD	5.4	2.4	5.9	1.6	6	1.4	5.9	1.6
	Median ± IQR	5.2	2.1	5.7	1.7	5.8	1.7	5.6	2.1
2001	Mean ± SD	5.9	1.4	5.8	1.6	5.9	1.4	5.6	1.1
	Median ± IQR	5.6	1.8	5.6	1.9	5.8	1.7	5.6	1.6
2002	Mean ± SD	5.7	1.7	5.6	1.3	5.6	1.3	5.6	1.4
	Median ± IQR	5.5	1.8	5.4	1.9	5.5	1.8	5.5	1.7

Table .9.38: Distribution of Cholesterol in relation to Gender, HD patients 1993-2002

Year		Gender			
		Male		Female	
1993	Mean $\pm$ SD	5	1.4	5.7	2.2
	Median $\pm$ IQR	4.8	1.7	5.4	2.1
1994	Mean $\pm$ SD	4.8	1.2	5.2	1.3
	Median $\pm$ IQR	4.8	1.6	5.2	1.3
1995	Mean $\pm$ SD	4.9	1.4	5.4	1.4
	Median $\pm$ IQR	4.8	1.6	5.3	1.5
1996	Mean $\pm$ SD	5	1.4	5.3	1.5
	Median $\pm$ IQR	4.8	1.6	5.2	1.8
1997	Mean $\pm$ SD	5	1.4	5.4	1.4
	Median $\pm$ IQR	4.9	1.6	5.3	1.7
1998	Mean $\pm$ SD	5	1.3	5.3	1.4
	Median $\pm$ IQR	4.9	1.5	5.2	1.6
1999	Mean $\pm$ SD	4.8	1.2	5.3	1.3
	Median $\pm$ IQR	4.7	1.5	5.1	1.6
2000	Mean $\pm$ SD	4.8	1.2	5.3	1.2
	Median $\pm$ IQR	4.8	1.6	5.2	1.6
2001	Mean $\pm$ SD	4.9	1.2	5.3	1.3
	Median $\pm$ IQR	4.8	1.5	5.2	1.6
2002	Mean $\pm$ SD	4.8	1.2	5.2	1.2
	Median $\pm$ IQR	4.7	1.4	5.2	1.5

Table .9.39: Distribution of Cholesterol in relation to Gender, CAPD patients 1993-2002

Year		Gender			
		Male		Female	
1993	Mean $\pm$ SD	6.2	2.5	6.6	1.6
	Median $\pm$ IQR	5.6	2.1	6.5	2.5
1994	Mean $\pm$ SD	6	1.5	6.7	1.8
	Median $\pm$ IQR	5.8	1.8	6.3	1.8
1995	Mean $\pm$ SD	5.8	1.7	6.4	1.8
	Median $\pm$ IQR	5.8	2.2	6.2	2.2
1996	Mean $\pm$ SD	5.8	1.4	6.2	1.6
	Median $\pm$ IQR	5.9	1.9	5.9	2.2
1997	Mean $\pm$ SD	5.8	1.3	6.2	1.4
	Median $\pm$ IQR	5.7	1.7	6.2	1.8
1998	Mean $\pm$ SD	5.8	1.4	6.1	1.5
	Median $\pm$ IQR	5.7	1.6	6	1.7
1999	Mean $\pm$ SD	5.5	1.3	5.9	1.4
	Median $\pm$ IQR	5.3	1.6	5.8	1.5
2000	Mean $\pm$ SD	5.5	1.5	6.2	1.6
	Median $\pm$ IQR	5.5	1.7	6.1	1.8
2001	Mean $\pm$ SD	5.5	1.2	6.1	1.5
	Median $\pm$ IQR	5.3	1.5	6	1.8
2002	Mean $\pm$ SD	5.2	1.3	6	1.4
	Median $\pm$ IQR	5.1	1.7	5.9	1.8

Table .9.40: Distribution of Cholesterol in relation to Diabetes mellitus, HD patients 1993-2002

Year		Diabetes mellitus			
		Without DM		With DM	
1993	Mean $\pm$ SD	5.3	1.9	5.1	1.2
	Median $\pm$ IQR	4.9	1.8	5.1	1.6
1994	Mean $\pm$ SD	4.9	1.3	5	1.3
	Median $\pm$ IQR	4.8	1.5	5.1	1.6
1995	Mean $\pm$ SD	5.1	1.4	5.3	1.6
	Median $\pm$ IQR	4.9	1.6	5.3	1.8
1996	Mean $\pm$ SD	5.1	1.4	5.2	1.4
	Median $\pm$ IQR	4.9	1.7	5.2	1.9
1997	Mean $\pm$ SD	5.1	1.3	5.4	1.6
	Median $\pm$ IQR	5	1.7	5.3	1.7
1998	Mean $\pm$ SD	5.1	1.3	5.3	1.3
	Median $\pm$ IQR	4.9	1.6	5.2	1.6
1999	Mean $\pm$ SD	4.9	1.2	5.2	1.3
	Median $\pm$ IQR	4.8	1.6	5.1	1.8
2000	Mean $\pm$ SD	5	1.2	5.1	1.3
	Median $\pm$ IQR	4.9	1.6	5	1.7
2001	Mean $\pm$ SD	5	1.2	5.1	1.3
	Median $\pm$ IQR	4.9	1.5	5	1.7
2002	Mean $\pm$ SD	4.9	1.2	5	1.3
	Median $\pm$ IQR	4.9	1.4	4.9	1.6

Table .9.41: Distribution of Cholesterol in relation to Diabetes mellitus, CAPD patients 1993-2002

Year		Diabetes mellitus			
		Without DM		With DM	
1993	Mean $\pm$ SD	6.3	2.2	6.7	1.7
	Median $\pm$ IQR	5.9	2	6.3	2.7
1994	Mean $\pm$ SD	6.2	1.5	6.7	2
	Median $\pm$ IQR	5.9	1.7	6.3	1.6
1995	Mean $\pm$ SD	6.1	1.9	6.1	1.4
	Median $\pm$ IQR	6	2.2	6.2	1.8
1996	Mean $\pm$ SD	6	1.6	5.9	1.5
	Median $\pm$ IQR	5.9	1.9	5.9	1.9
1997	Mean $\pm$ SD	6.1	1.3	6.1	1.5
	Median $\pm$ IQR	6	1.7	5.9	1.9
1998	Mean $\pm$ SD	6	1.4	5.9	1.5
	Median $\pm$ IQR	5.9	1.7	5.9	1.8
1999	Mean $\pm$ SD	5.8	1.4	5.6	1.4
	Median $\pm$ IQR	5.8	1.6	5.4	1.5
2000	Mean $\pm$ SD	6	1.7	5.7	1.3
	Median $\pm$ IQR	5.8	1.8	5.5	1.8
2001	Mean $\pm$ SD	5.9	1.4	5.7	1.4
	Median $\pm$ IQR	5.7	1.8	5.6	1.7
2002	Mean $\pm$ SD	5.7	1.4	5.4	1.4
	Median $\pm$ IQR	5.6	1.8	5.3	1.6



Table .9.42: Unadjusted five-year patient survival in relation to Cholesterol, HD patients 1997-2002

Cholesterol 1	<3.5 mmol/L		3.5-<5.3 mmol/L		5.3-<6.2 mmol/L		≥6.2 mmol/L		
	Interval (months)	% survival	SE	% survival	SE	% survival	SE	% survival	SE
	6	98	1	98	0	99	0	99	0
	12	94	1	96	0	97	0	96	1
	24	80	3	90	1	93	1	92	1
	36	72	3	83	1	87	1	86	2
	48	66	4	77	1	81	2	77	3
	60	55	5	71	1	74	2	72	3

SE=standard error

Figure .9.42: Unadjusted five-year patient survival in relation to Cholesterol, HD patients 1997-2002

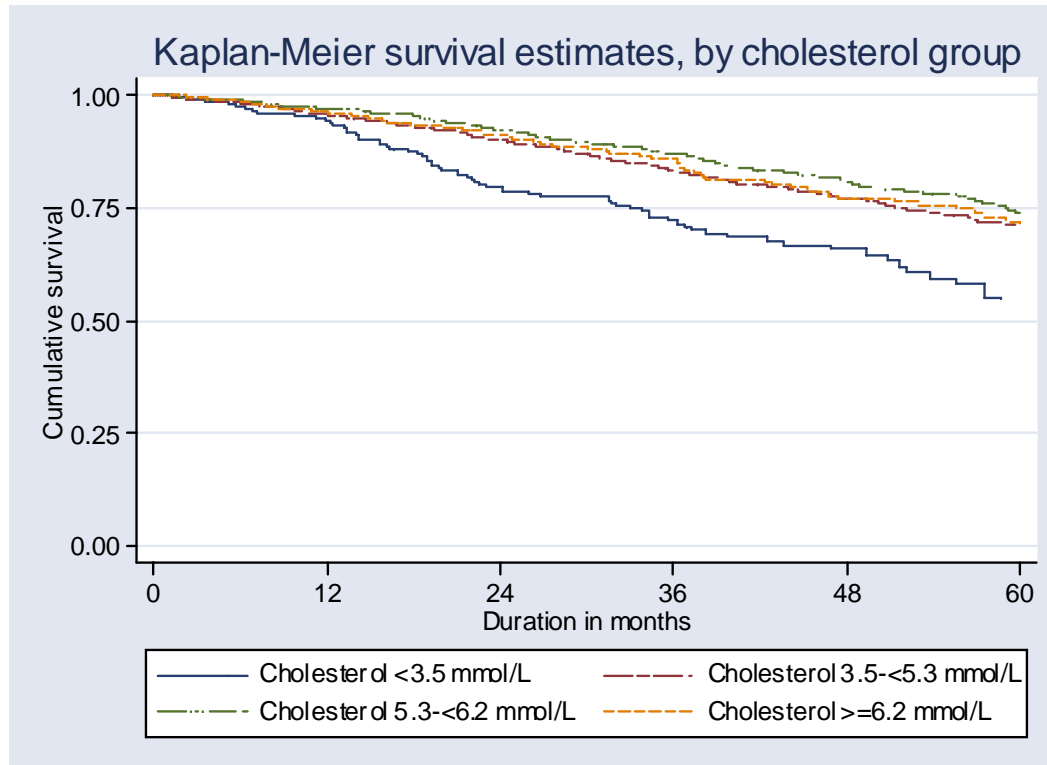


Table .9.43: Unadjusted five-year patient survival in relation to Cholesterol, CAPD patients 1997-2002

Cholesterol 1	<3.5 mmol/L		3.5-<5.3 mmol/L		5.3-<6.2 mmol/L		≥6.2 mmol/L		
	Interval (months)	% survival	SE	% survival	SE	% survival	SE	% survival	SE
	6	93	5	96	1	98	1	96	1
	12	69	10	90	2	95	1	91	2
	24	69	10	76	3	81	3	76	3
	36	49	14	58	4	65	4	59	4
	48	49	14	45	5	59	4	50	4
	60	-	-	45	5	57	4	34	6

SE=standard error

Figure .9.43: Unadjusted five-year patient survival in relation to Cholesterol, CAPD patients 1997-2002

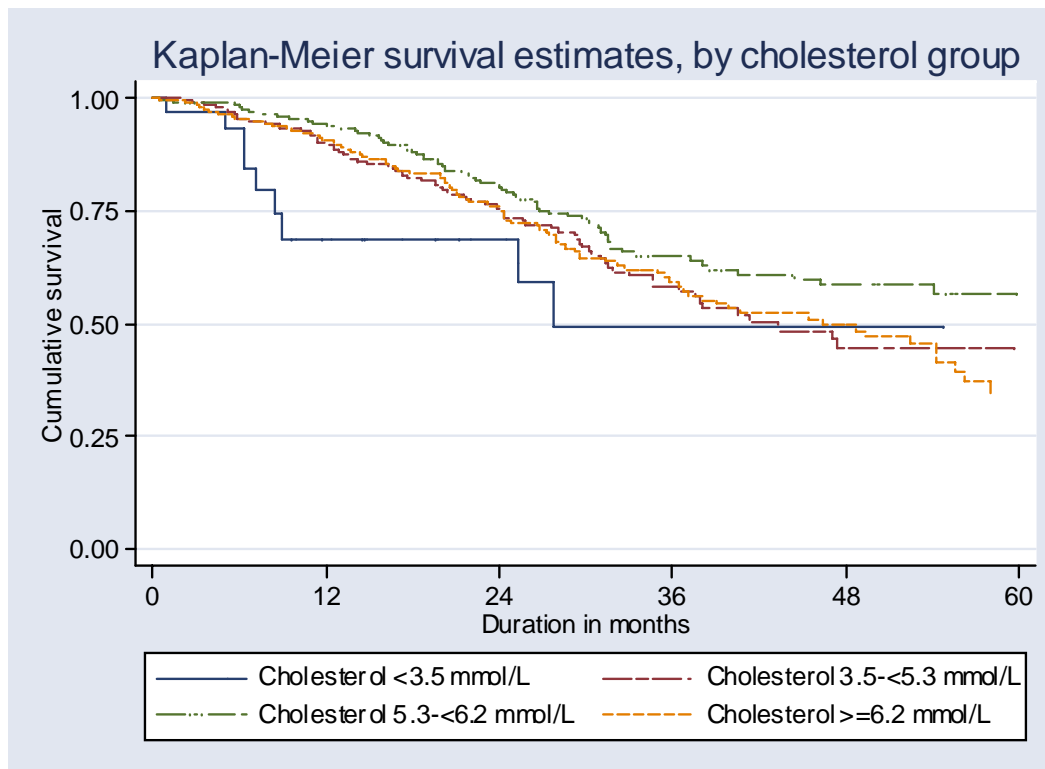


Table .9.44: Adjusted five-year patient survival in relation to Cholesterol, HD patients 1997-2002 (Adjusted for age, gender, primary diagnosis and time on RRT)

Cholesterol	n	Hazard ratio	95% CI	p-value
<3.5 mmol/L		1.76	(1.39, 2.24)	0.000
3.5-<5.3 mmol/L		1.00	-	-
5.3-<6.2 mmol/L		0.76	(0.63, 0.91)	0.003
≥6.2 mmol/L		0.82	(0.65, 1.04)	0.100

Table .9.45: Adjusted five-year patient survival in relation to Cholesterol, CAPD patients 1997-2002 (Adjusted for age, gender, primary diagnosis and time on RRT)

Cholesterol	n	Hazard ratio	95% CI	p-value
<3.5 mmol/L	34	2.24	(1.10, 4.54)	0.026
3.5-<5.3 mmol/L	350	1.00	-	-
5.3-<6.2 mmol/L	331	0.82	(0.60, 1.12)	0.219
≥6.2 mmol/L	365	1.14	(0.84, 1.54)	0.403

Figure .9.44: Adjusted five-year patient survival in relation to Cholesterol, HD patients 1997-2002 (Adjusted for age, gender, primary diagnosis and time on RRT)

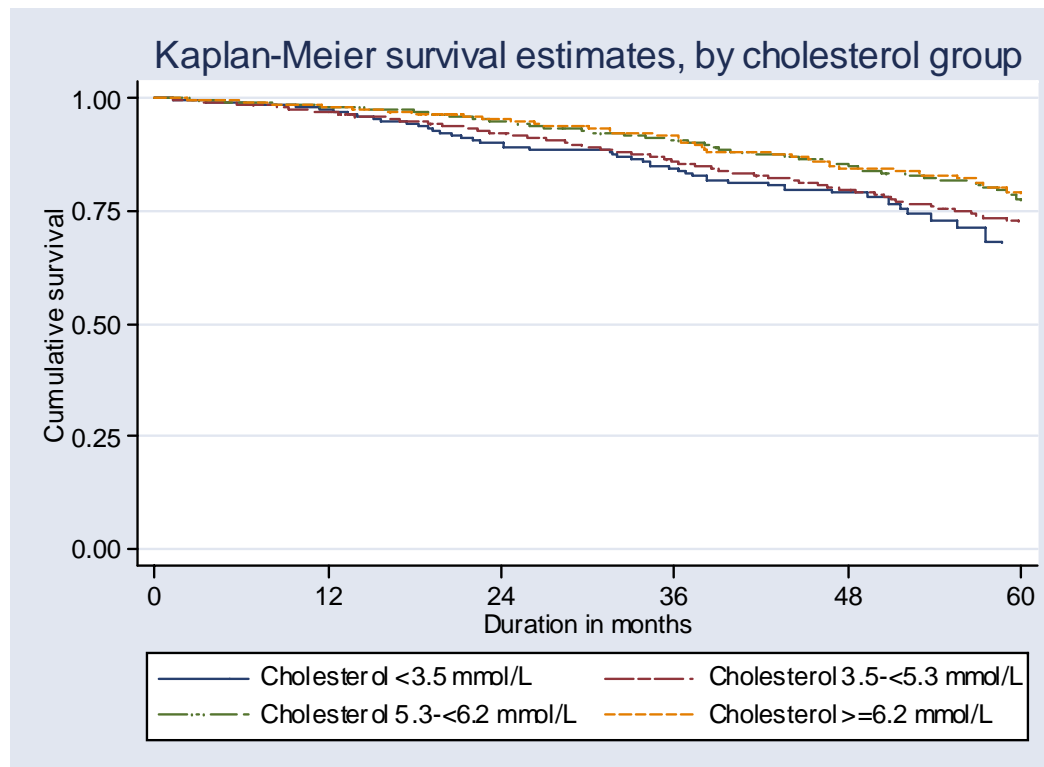


Figure .9.45: Adjusted five-year patient survival in relation to Cholesterol, CAPD patients 1997-2002 (Adjusted for age, gender, primary diagnosis and time on RRT)

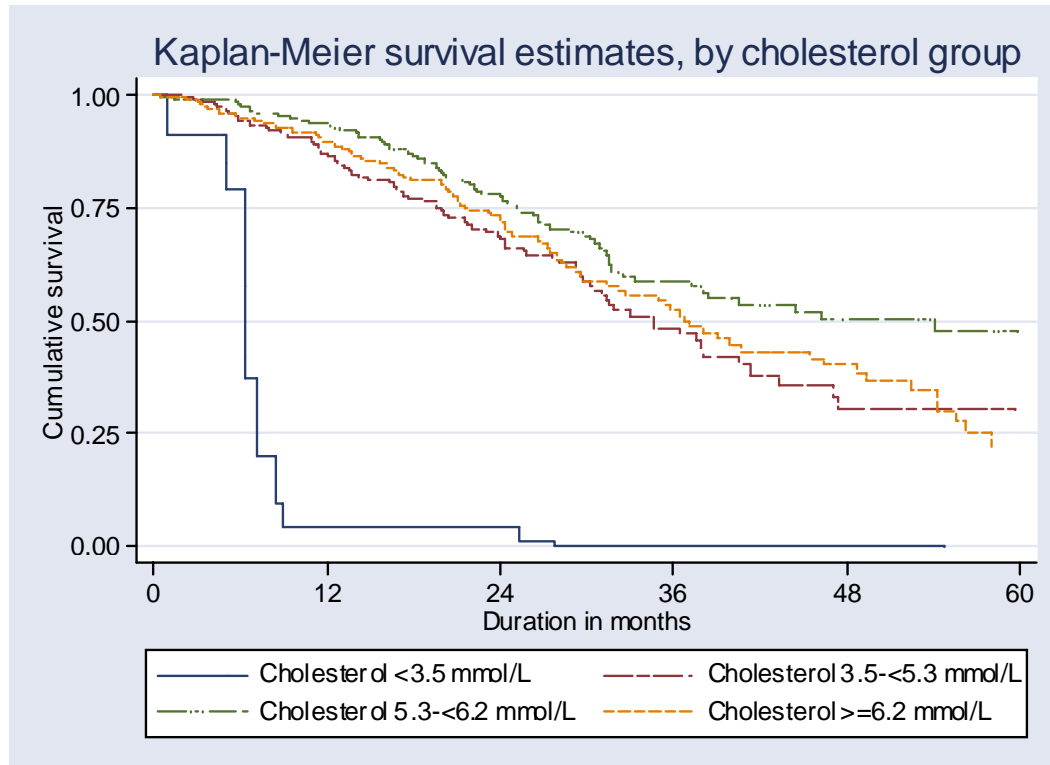


Table .9.46: Distribution of Triglyceride (mmol/L), HD patients 1993-2002

Year	No of subjects	Mean	SD	Median	LQ	UQ	% patients <1.7 mmol/L	% patients 1.7-<2.3 mmol/L	% patients 2.3-<3.5 mmol/L	% patients ≥3.5 mmol/L
1993	316	2.3	2	1.8	1.3	2.6	48	22	17	12
1994	411	2.2	1.6	1.8	1.3	2.6	46	21	19	13
1995	504	2.1	1.4	1.7	1.3	2.6	48	22	17	12
1996	570	2.2	1.6	1.8	1.3	2.7	43	23	21	12
1997	1076	2.1	1.4	1.8	1.3	2.5	45	24	18	12
1998	1090	2.2	1.5	1.8	1.3	2.6	42	26	20	12
1999	1635	2.1	1.3	1.7	1.2	2.5	49	22	18	11
2000	2396	2.1	1.4	1.7	1.3	2.6	48	22	19	12
2001	3164	2.1	1.4	1.7	1.2	2.5	48	22	17	13
2002	3595	2.1	1.4	1.8	1.2	2.5	47	23	18	12



Table .9.47: Distribution of Triglyceride (mmol/L), CAPD patients 1993-2002

Year	No of subjects	Mean	SD	Median	LQ	UQ	% patients <1.7 mmol/L	% patients 1.7-<2.3 mmol/L	% patients 2.3-<3.5 mmol/L	% patients ≥3.5 mmol/L
1993	92	3.4	2.8	2.6	1.7	3.7	24	20	28	28
1994	115	3	2.5	2.4	1.5	3.5	30	18	26	25
1995	216	2.8	2	2.2	1.5	3.4	32	21	23	24
1996	318	2.7	2.1	2	1.4	3.3	37	21	19	22
1997	414	2.6	1.9	2.2	1.4	3	36	21	25	18
1998	344	2.4	1.8	1.8	1.3	3	42	22	17	19
1999	421	2.4	1.6	2	1.4	3	38	25	18	19
2000	520	2.7	2.2	2.1	1.5	3	33	24	23	21
2001	576	2.6	1.8	2	1.4	3	36	22	22	20
2002	765	2.5	1.7	2	1.4	3	39	21	22	18

Table .9.48: Distribution of Triglyceride in relation to Age, HD patients 1993-2002

Year		Age group (years)							
		<20		20-39		40-59		≥60	
1993	Mean ± SD	2.9	3.5	2.2	2.1	2.4	1.8	2	0.7
	Median ± IQR	1.6	1	1.6	1.1	1.9	1.4	1.9	1
1994	Mean ± SD	2	1	2	1.2	2.4	1.9	2.2	1.5
	Median ± IQR	1.7	1.1	1.7	1.2	1.8	1.4	1.7	1.6
1995	Mean ± SD	2	0.9	2	1.3	2.3	1.5	2.1	1.3
	Median ± IQR	2.1	1.1	1.6	1.1	1.9	1.4	1.6	1.6
1996	Mean ± SD	1.9	0.8	2	1.3	2.5	1.8	2	1.3
	Median ± IQR	2.1	1.4	1.7	1.3	1.9	1.6	1.8	1.3
1997	Mean ± SD	1.8	1.1	2	1.1	2.3	1.6	2.2	1.3
	Median ± IQR	1.6	0.8	1.7	1.2	1.8	1.4	1.9	1.2
1998	Mean ± SD	2.1	1.3	2.1	1.4	2.4	1.7	2.2	1.2
	Median ± IQR	1.7	1.1	1.7	1.2	1.9	1.4	1.9	1.3
1999	Mean ± SD	1.8	1	1.9	1.1	2.2	1.4	2.1	1.3
	Median ± IQR	1.5	1	1.6	1.3	1.8	1.3	1.8	1
2000	Mean ± SD	1.8	0.7	2	1.3	2.2	1.4	2.1	1.3
	Median ± IQR	1.6	1	1.6	1.2	1.8	1.5	1.8	1.3
2001	Mean ± SD	1.6	0.6	2	1.4	2.2	1.4	2.1	1.5
	Median ± IQR	1.6	0.8	1.6	1.3	1.8	1.4	1.8	1.5
2002	Mean ± SD	1.6	0.7	1.9	1.3	2.2	1.5	2.2	1.5
	Median ± IQR	1.5	0.9	1.6	1.1	1.8	1.4	1.8	1.4

Table .9.49: Distribution of Triglyceride in relation to Gender, HD patients 1993-2002

Year		Gender			
		Male		Female	
1993	Mean $\pm$ SD	2.3	1.9	2.3	2.1
	Median $\pm$ IQR	1.8	1.3	1.8	1.3
1994	Mean $\pm$ SD	2.2	1.5	2.3	1.8
	Median $\pm$ IQR	1.8	1.3	1.8	1.2
1995	Mean $\pm$ SD	2.1	1.2	2.2	1.7
	Median $\pm$ IQR	1.7	1.4	1.7	1.2
1996	Mean $\pm$ SD	2.2	1.4	2.2	1.8
	Median $\pm$ IQR	1.8	1.4	1.8	1.4
1997	Mean $\pm$ SD	2.2	1.4	2.1	1.4
	Median $\pm$ IQR	1.8	1.3	1.7	1.2
1998	Mean $\pm$ SD	2.2	1.5	2.2	1.7
	Median $\pm$ IQR	1.9	1.3	1.8	1.3
1999	Mean $\pm$ SD	2	1.3	2.1	1.3
	Median $\pm$ IQR	1.6	1.3	1.8	1.2
2000	Mean $\pm$ SD	2.1	1.4	2.1	1.3
	Median $\pm$ IQR	1.7	1.3	1.8	1.4
2001	Mean $\pm$ SD	2.1	1.5	2.1	1.3
	Median $\pm$ IQR	1.7	1.3	1.7	1.3
2002	Mean $\pm$ SD	2.1	1.4	2.2	1.4
	Median $\pm$ IQR	1.7	1.3	1.8	1.3

Table .9.50: Distribution of Triglyceride in relation to Gender, CAPD patients 1993-2002

Year		Gender			
		Male		Female	
1993	Mean $\pm$ SD	3.6	3.4	3.2	2.2
	Median $\pm$ IQR	2.3	2.3	2.7	1.7
1994	Mean $\pm$ SD	2.9	2.7	3	2.2
	Median $\pm$ IQR	2.2	1.9	2.6	1.8
1995	Mean $\pm$ SD	2.6	1.9	3	2.1
	Median $\pm$ IQR	2	1.9	2.3	1.9
1996	Mean $\pm$ SD	2.5	1.9	2.9	2.2
	Median $\pm$ IQR	2	1.9	2.1	2
1997	Mean $\pm$ SD	2.5	2	2.7	1.8
	Median $\pm$ IQR	2	1.8	2.3	1.7
1998	Mean $\pm$ SD	2.3	1.9	2.6	1.8
	Median $\pm$ IQR	1.7	1.3	2	1.8
1999	Mean $\pm$ SD	2.4	1.8	2.4	1.5
	Median $\pm$ IQR	1.9	1.7	2	1.6
2000	Mean $\pm$ SD	2.5	2.1	2.9	2.3
	Median $\pm$ IQR	2	1.4	2.3	1.9
2001	Mean $\pm$ SD	2.3	1.6	2.8	1.9
	Median $\pm$ IQR	1.9	1.4	2.3	2
2002	Mean $\pm$ SD	2.2	1.5	2.7	1.9
	Median $\pm$ IQR	1.8	1.3	2.2	1.8

Table .9.51: Distribution of Triglyceride in relation to Diabetes mellitus, HD patients 1993-2002

Year		Diabetes mellitus			
		Without DM		With DM	
1993	Mean $\pm$ SD	2.2	1.9	2.9	2.3
	Median $\pm$ IQR	1.6	1.2	2.2	1.3
1994	Mean $\pm$ SD	2.1	1.5	2.6	1.9
	Median $\pm$ IQR	1.7	1.2	2.1	1.9
1995	Mean $\pm$ SD	2	1.2	2.5	1.9
	Median $\pm$ IQR	1.7	1.1	2.1	2.3
1996	Mean $\pm$ SD	2.2	1.4	2.5	2.2
	Median $\pm$ IQR	1.8	1.3	2	1.7
1997	Mean $\pm$ SD	2	1.2	2.6	1.8
	Median $\pm$ IQR	1.7	1.1	2.1	1.7
1998	Mean $\pm$ SD	2.1	1.4	2.5	2
	Median $\pm$ IQR	1.8	1.2	2	1.5
1999	Mean $\pm$ SD	2	1.2	2.3	1.4
	Median $\pm$ IQR	1.6	1.2	1.9	1.4
2000	Mean $\pm$ SD	2	1.3	2.3	1.5
	Median $\pm$ IQR	1.7	1.3	1.9	1.6
2001	Mean $\pm$ SD	2	1.3	2.3	1.5
	Median $\pm$ IQR	1.6	1.2	1.9	1.7
2002	Mean $\pm$ SD	2	1.3	2.4	1.6
	Median $\pm$ IQR	1.7	1.2	2	1.7

Table .9.52: Distribution of Triglyceride in relation to Diabetes mellitus, CAPD patients 1993-2002

Year		Diabetes mellitus			
		Without DM		With DM	
1993	Mean $\pm$ SD	3.4	2.9	3.4	2.5
	Median $\pm$ IQR	2.6	2.3	2.8	1.8
1994	Mean $\pm$ SD	2.9	2.5	3.1	2.5
	Median $\pm$ IQR	2.4	1.8	2.3	1.9
1995	Mean $\pm$ SD	3	2.3	2.5	1.3
	Median $\pm$ IQR	2.2	2	2.2	1.8
1996	Mean $\pm$ SD	2.7	2.2	2.7	1.8
	Median $\pm$ IQR	2	1.5	2.1	2
1997	Mean $\pm$ SD	2.6	2	2.6	1.7
	Median $\pm$ IQR	2.1	1.7	2.2	1.7
1998	Mean $\pm$ SD	2.3	1.8	2.6	1.9
	Median $\pm$ IQR	1.7	1.3	2	2.2
1999	Mean $\pm$ SD	2.4	1.6	2.5	1.6
	Median $\pm$ IQR	1.9	1.5	2.1	1.8
2000	Mean $\pm$ SD	2.7	2.4	2.7	1.8
	Median $\pm$ IQR	2.1	1.5	2.2	1.8
2001	Mean $\pm$ SD	2.4	1.7	2.8	1.9
	Median $\pm$ IQR	2	1.5	2.2	2
2002	Mean $\pm$ SD	2.4	1.6	2.7	1.9
	Median $\pm$ IQR	1.9	1.6	2.1	1.9

Table .9.53: Unadjusted five-year patient survival in relation to Triglyceride, HD patients 1997-2002

Triglyceride	<1.7 mmol/L		1.7-<2.3 mmol/L		2.3-<3.5 mmol/L		≥3.5 mmol/L	
	% survival	SE	% survival	SE	% survival	SE	% survival	SE
6	98	0	99	0	98	0	99	0
12	95	1	96	1	96	1	98	1
24	87	1	91	1	91	1	96	1
36	80	1	84	1	86	2	91	2
48	74	1	80	2	80	2	85	2
60	68	2	74	2	72	3	78	3

SE=standard error

Figure .9.53: Unadjusted five-year patient survival in relation to Triglyceride, HD patients 1997-2002

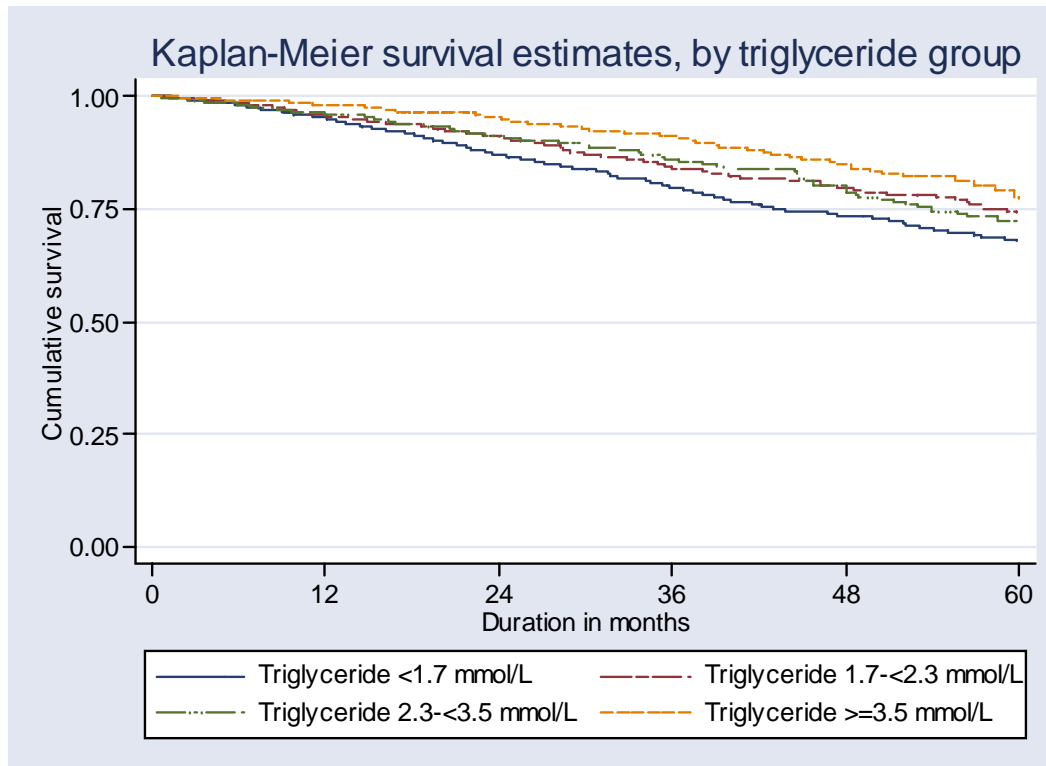




Table .9.54: Adjusted five-year patient survival in relation to Triglyceride, HD patients 1997-2002 (Adjusted for age, gender, primary diagnosis and time on RRT)

Triglyceride	n	Hazard ratio	95% CI	p-value
<1.7 mmol/L	1640	1.37	(1.12, 1.66)	0.002
1.7-<2.3 mmol/L	962	1.00	-	-
2.3-<3.5 mmol/L	720	0.90	(0.70, 1.16)	0.427
≥3.5 mmol/L	486	0.60	(0.44, 0.82)	0.001

Figure .9.54: Adjusted five-year patient survival in relation to Triglyceride, HD patients 1997-2002 (Adjusted for age, gender, primary diagnosis and time on RRT)

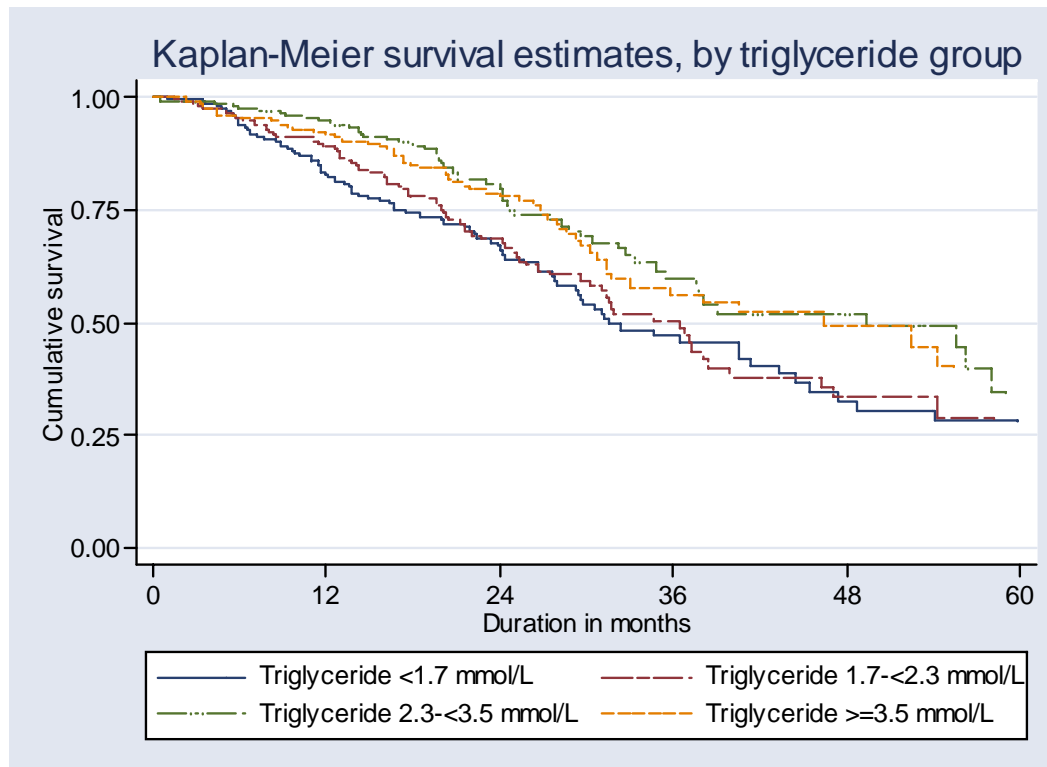


Table .9.55: Adjusted five-year patient survival in relation to Triglyceride, CAPD patients 1997-2002 (Adjusted for age, gender, primary diagnosis and time on RRT)

Triglyceride	n	Hazard ratio	95% CI	p-value
<1.7 mmol/L	356	0.91	(0.66, 1.24)	0.535
1.7-<2.3 mmol/L	278	1.00	-	-
2.3-<3.5 mmol/L	255	0.73	(0.52, 1.03)	0.077
≥3.5 mmol/L	189	0.69	(0.49, 0.98)	0.040

Figure .9.55: Adjusted five-year patient survival in relation to Triglyceride, CAPD patients 1997-2002 (Adjusted for age, gender, primary diagnosis and time on RRT)

