

**CHAPTER 1**

**ALL RENAL  
REPLACEMENT THERAPY**

Lim Teck Onn  
Lim Yam Ngo

1.1. Stock And Flow

Intake of new dialysis patients showed a linear increase over the years from 684 in 1995 to 2538 in 2004. Prevalent dialysis patients increased from 2232 in 1995 to 11554 at year end 2004. The number of new transplant patients increased from just above 100 in 1995 to 174 in 2004 and patients with functioning renal transplants increased from 931 to 1587 over the same period. (table and figure 1.01)

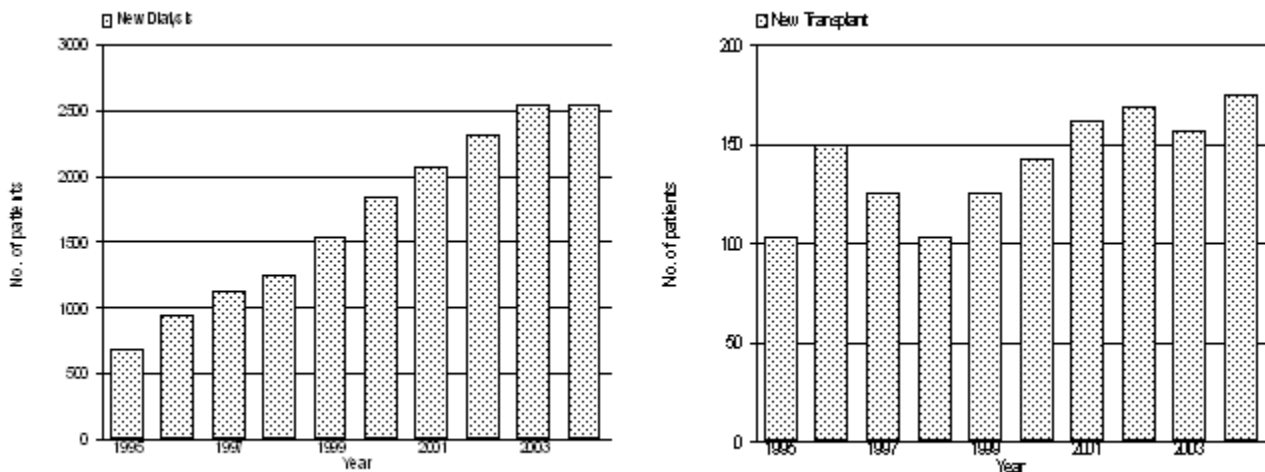
Table 1.01: Stock and Flow of RRT, Malaysia 1995 – 2004

Year	1995	1996	1997	1998	1999	2000	2001	2002	2003	2004*
New Dialysis patients	684	952	1133	1249	1542	1833	2071	2310	2540	2538
New Transplants	103	150	126	103	126	143	162	169	157	174
Dialysis deaths	178	222	315	373	486	583	801	908	1128	1115
Transplant deaths	16	31	29	23	25	27	35	31	36	32
Dialysing at 31st Dec	2232	2919	3694	4534	5536	6690	7830	9079	10342	11554
Functioning transplant at 31st Dec	931	1021	1080	1111	1172	1249	1333	1428	1501	1587

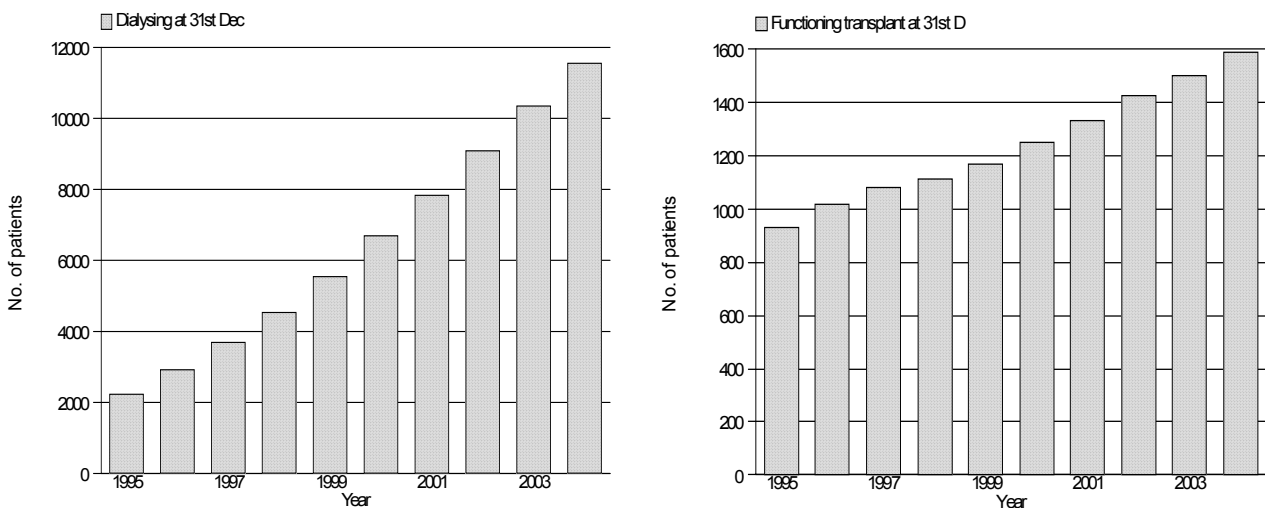
\*preliminary results

Figure 1.01: Stock and Flow of RRT, Malaysia 1995 – 2004

(a) New Dialysis and Transplant patients



(b) Patients Dialysing and with Functioning Transplant at 31<sup>st</sup> December 1995 – 2004



## 1.2 Treatment Provision Rate

Dialysis acceptance rates showed a three-fold increase over the last 10 years - from 33 per million population in 1995 to 101 per million population in 2003. (Data for 2004 are preliminary since at the time preparation of this report there were still many new cases yet to be notified to registry.)

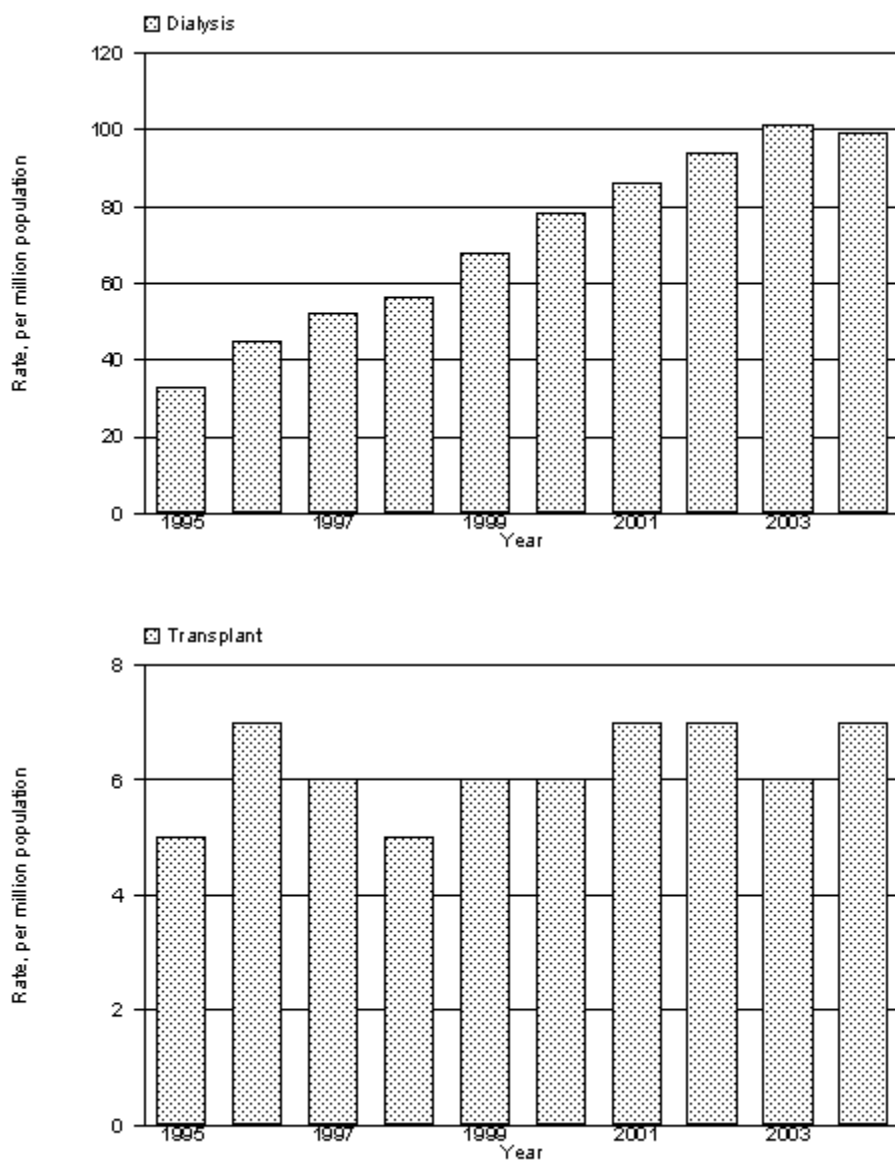
New transplant rates remained low over the years fluctuating between 5-7 per million population per year. (table and figure 1.02)

**Table 1.02:** New Dialysis Acceptance Rate and New Transplant Rate per million population 1995 – 2004

Acceptance rate	1995	1996	1997	1998	1999	2000	2001	2002	2003	2004*
New Dialysis	33	45	52	56	68	78	86	94	101	99
New Transplant	5	7	6	5	6	6	7	7	6	7

\*preliminary results

**Figure 1.02:** New Dialysis Acceptance and New Transplant Rate 1995 - 2004



Dialysis prevalence rate quadrupled over the last 10 years, increasing from 108 per million population in 1995 to 452 in 2004. The transplant prevalence rates however only increased by one and half times from 45 to 61 per million population over the same period. (table and figure 1.03)

**Table 1.03:** RRT Prevalence Rate per million population 1995 – 2004

Prevalence rate	1995	1996	1997	1998	1999	2000	2001	2002	2003	2004
Dialysis	108	138	171	204	244	285	326	370	413	452
Transplant	45	48	50	50	52	53	56	58	60	61

**Figure 1.03:** Dialysis and Transplant Prevalence Rate per million population 1995 - 2004

