

Table 10.1: Prevalence of positive HBsAg and positive Anti-HCV at annual survey, HD patients 1997-2004

Year	No. of subjects	Prevalence of HBsAg+ (%)	Prevalence of Anti-HCV+ (%)
1997	1695	6	23
1998	2141	6	22
1999	2996	6	23
2000	4392	6	25
2001	5194	6	23
2002	6108	5	20
2003	7003	5	19
2004	7556	5	17

Table 10.2: Prevalence of positive HBsAg and positive Anti-HCV at annual survey, CAPD patients 1997-2004

Year	No. of subjects	Prevalence of HBsAg+ (%)	Prevalence of Anti-HCV+ (%)
1997	476	3	5
1998	541	3	6
1999	610	2	5
2000	662	2	5
2001	781	2	3
2002	891	3	4
2003	1232	3	4
2004	1262	4	5

Table 10.3: Variation in Proportion of patients with positive HBsAg at annual survey among HD centres, 2004

Year	No. of centres	Min	5 th Centile	LQ	Median	UQ	95 th Centile	Max
1997	46	0	0	1	5	9	17	19
1998	46	0	0	1	5	8	15	16
1999	69	0	0	0	4	9	14	31
2000	100	0	0	0	4	9	15	91
2001	118	0	0	0	4	8	14	83
2002	137	0	0	0	3	7	13	15
2003	160	0	0	0	4	8	13	60
2004	183	0	0	0	3	8	13	100

Figure 10.3: Variation in Proportion of patients with positive HBsAg among HD centres, 2004

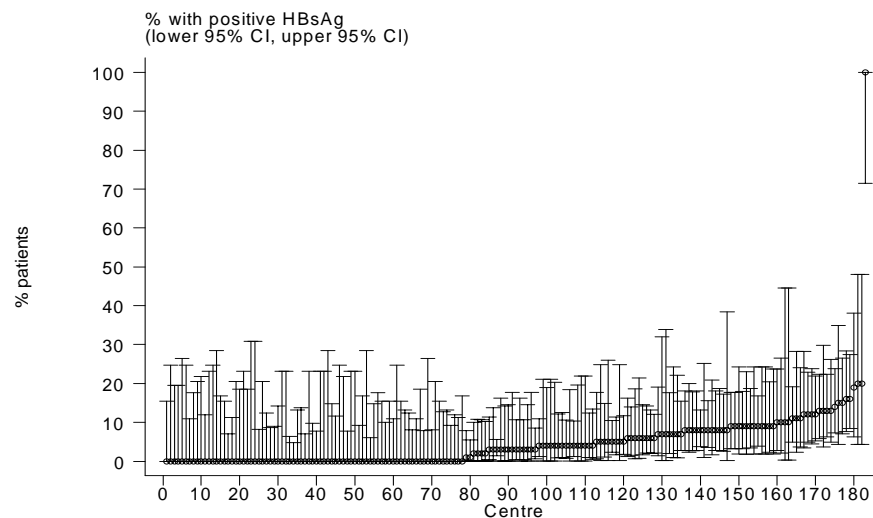


Table 10.4: Variation in Proportion of patients with positive HBsAg at annual survey among CAPD centres, 2004

Year	No. of centres	Min	5 th Centile	LQ	Median	UQ	95 th Centile	Max
1997	7	0	0	0	2	3	8	8
1998	9	0	0	0	1	3	6	6
1999	9	0	0	0	2	2	4	4
2000	11	0	0	0	0	5	9	9
2001	12	0	0	0	2	3	8	8
2002	14	0	0	1	3	9	20	20
2003	17	0	0	2	4	6	8	8
2004	17	0	0	1	3	6	11	11

Figure 10.4: Variation in Proportion of patients with positive HBsAg among CAPD centres, 2004

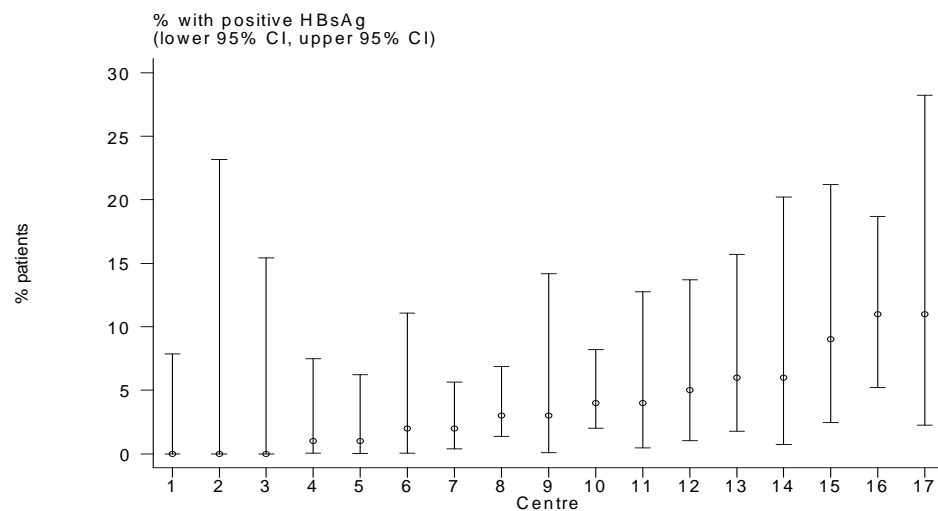


Table 10.5: Variation in Proportion of patients with positive anti-HCV at annual survey among HD centres, 2004

Year	No. of centres	Min	5 th Centile	LQ	Median	UQ	95 th Centile	Max
1997	46	0	0	15	21	29	56	64
1998	46	0	0	11	19.5	31	59	100
1999	69	0	0	7	18	31	57	100
2000	100	0	0	7	17	31	74.5	94
2001	118	0	0	6	15	27	67	93
2002	137	0	0	5	13	25	55	100
2003	160	0	0	5	11	23.5	51.5	96
2004	185	0	0	3	11	24	48	100

Figure 10.5: Variation in Proportion of patients with positive anti-HCV among HD centres, 2004

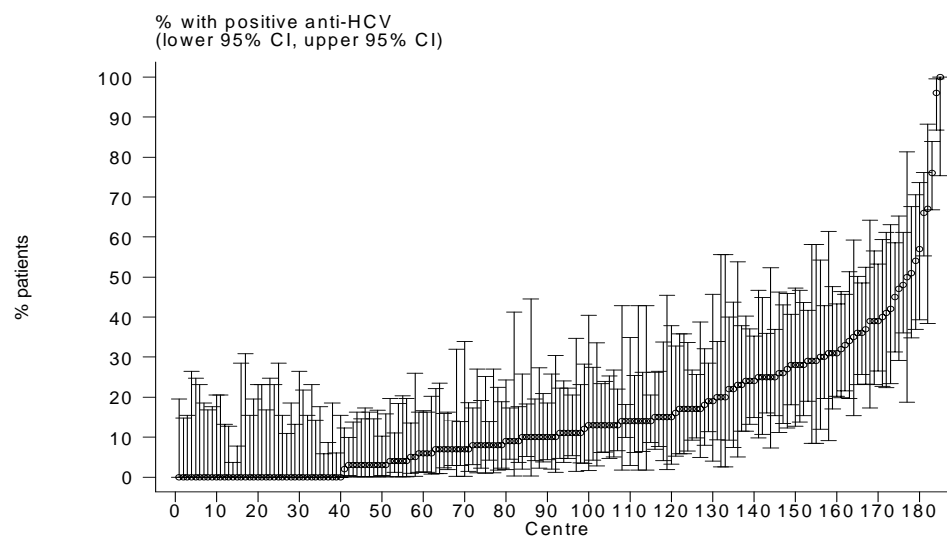


Table 10.6: Variation in Proportion of patients with positive anti-HCV at annual survey among CAPD centres, 2004

Year	No. of centres	Min	5 th Centile	LQ	Median	UQ	95 th Centile	Max
1997	7	0	0	0	6	7	9	9
1998	9	0	0	0	2	4	12	12
1999	9	0	0	2	4	7	14	14
2000	11	0	0	0	3	8	10	10
2001	12	0	0	0	3	4	9	9
2002	14	0	0	2	3	8	20	20
2003	17	0	0	1	3	6	9	9
2004	17	0	0	4	5	7	10	10

Figure 10.6: Variation in Proportion of patients with positive anti-HCV among CAPD centres, 2004

