

Table 2.1.1: Stock and flow – Dialysis Patients 1995 – 2004

Year	1995	1996	1997	1998	1999	2000	2001	2002	2003	2004*
New Dialysis patients	684	952	1133	1249	1542	1833	2071	2310	2540	2538
Died	178	222	315	373	486	583	801	908	1128	1115
Transplanted	36	56	59	61	69	106	133	143	121	140
Lost to Follow-up	5	5	5	8	7	10	15	23	43	80
Dialysing at 31st Dec	2232	2919	3694	4534	5536	6690	7830	9079	10342	11554

Table 2.1.2: Dialysis Treatment Rate per million population 1995 – 2004

Year	1995	1996	1997	1998	1999	2000	2001	2002	2003	2004*
Acceptance rate	33	45	52	56	68	78	86	94	101	99
Prevalence rate	108	138	171	204	244	285	326	370	413	452

Table 2.1.3: Dialysis Treatment Rate by State, per million state population 1995-2004

State	1995	1996	1997	1998	1999	2000	2001	2002	2003	2004*
Negeri Melaka	74	82	95	109	91	150	156	169	180	201
Pulau Pinang	73	72	85	113	124	106	122	147	138	169
Negeri Sembilan	48	74	74	92	94	118	112	131	148	154
Johor Darul Takzim	43	58	79	71	104	131	137	146	145	141
Selangor & W. Persekutuan	62	81	76	91	102	121	118	126	133	128
Perak Darul Redzuan	28	58	61	64	75	106	104	115	125	114
Kedah & Perlis	19	26	54	47	59	69	66	86	99	85
Terengganu Darul Iman	18	27	36	34	36	37	77	88	69	78
Pahang Darul Makmur	21	16	44	36	46	49	52	52	66	66
Sarawak	20	36	46	33	44	51	67	58	62	66
Kelantan Darul Naim	9	6	12	15	26	31	59	61	72	63
Sabah	12	18	16	24	32	25	36	36	45	48

Table 2.2.1: Number of dialysis centres, HD machines and treatment capacity by sector, December 2004

Sector	Centre (No.)	Centre HD machines (No.)	Centre HD capacity (No.)	Centre HD patients (No.)	Centre HD capacity: patient ratio	All dialysis patients (No.)
MOH	112	920	4600	2791	1.65	3979
NGO	93	1316	6580	3628	1.81	3977
Private (PRV))	124	1105	5525	3681	1.5	3273
University (UNI)	8	30	150	42	3.57	229
Armed Forces (AF)	10	42	210	94	2.23	96

Figure 2.2.1(a) & 2.2.2(b): Distribution of dialysis centres

Figure 2.2.1(a): Distribution of dialysis centres by Sector, December 2004

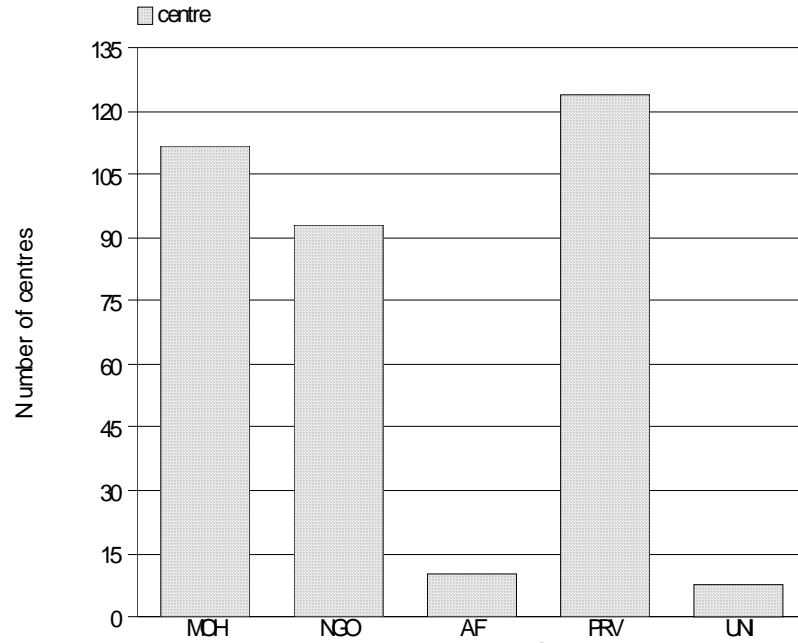


Figure 2.2.2(b): Distribution of dialysis patients by State, December 2004

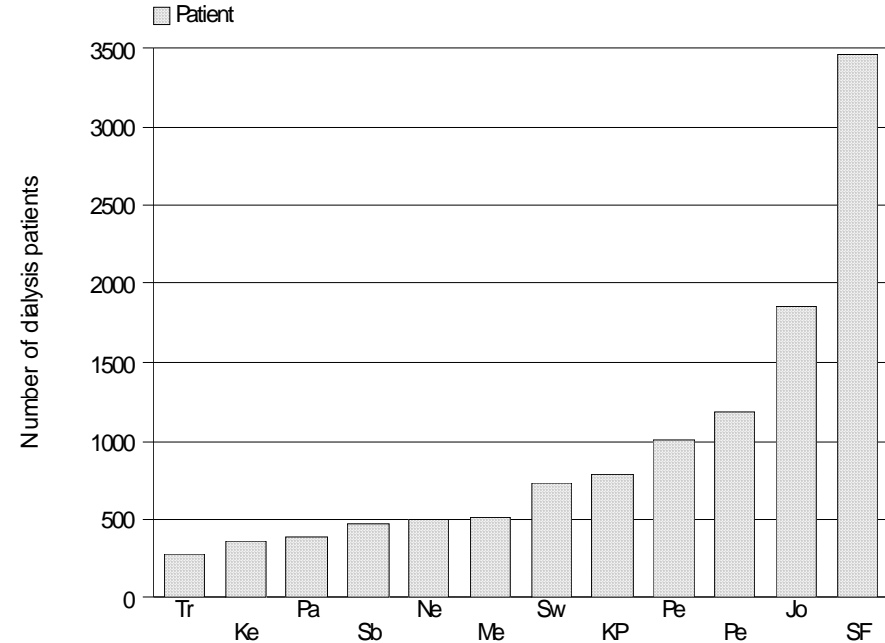


Figure 2.2.2(c): Distribution of dialysis treatment by State, December 2004

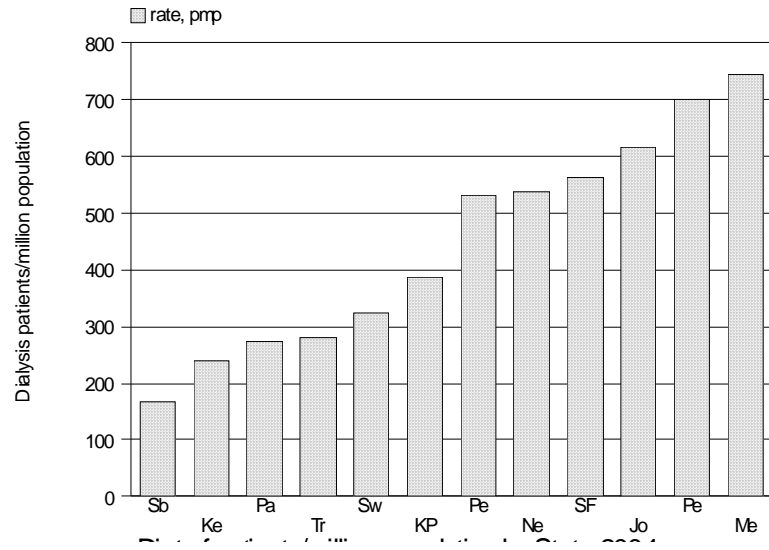


Figure 2.2.2(d): HD capacity to patient ratio by State, December 2004

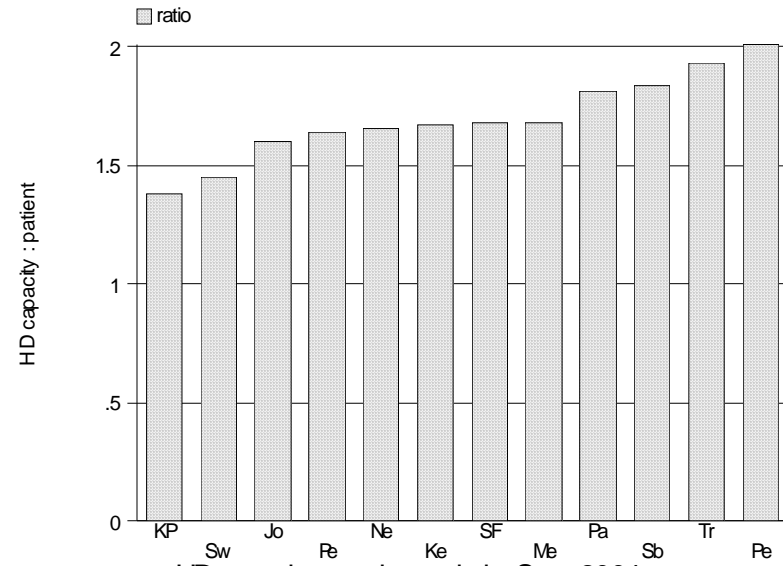
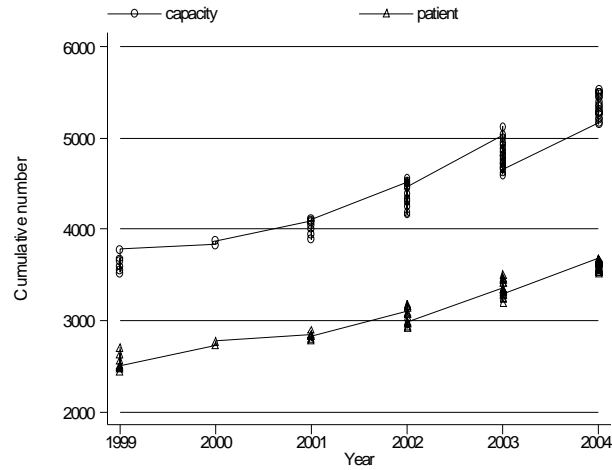


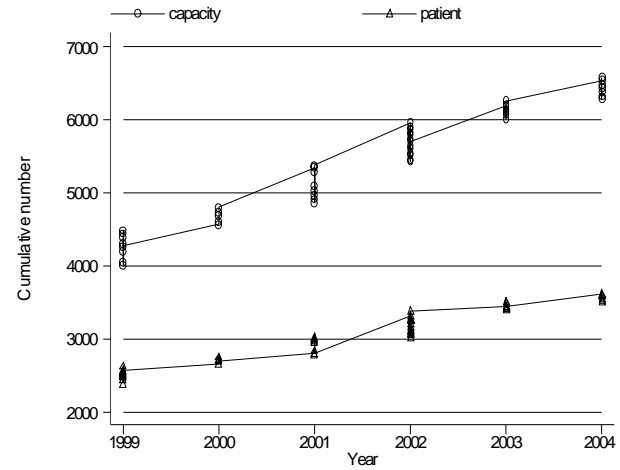
Table 2.2.3: Growth in HD capacity and HD patients in Private, NGO and MOH sectors, 1999-2004

Sector	Private		NGO		MOH	
	Cumulative HD capacity	Cumulative HD patients	Cumulative HD capacity	Cumulative HD patients	Cumulative HD capacity	Cumulative HD patients
1999	3780	2702	4485	2630	3070	2078
2000	3875	2772	4800	2756	3285	2221
2001	4125	2900	5370	3020	4020	2451
2002	4560	3184	5960	3385	4290	2656
2003	5130	3497	6260	3507	4470	2743
2004	5525	3681	6580	3628	4960	2927

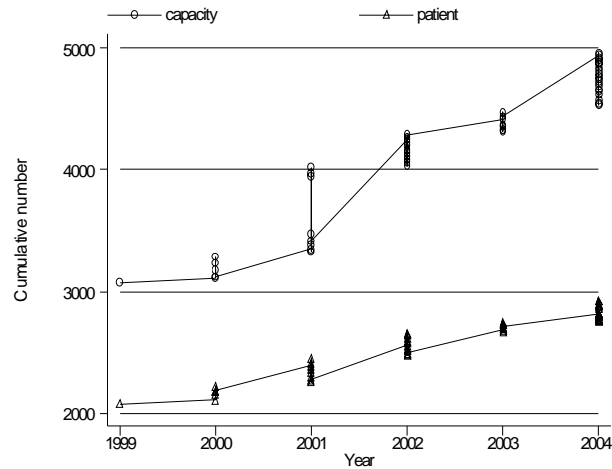
Figure 2.2.3: Growth in HD capacity and HD patients in Private, NGO and MOH sectors



Growth in HD capacity and patient, private sector 1999-2004



Growth in HD capacity and patient, NGO sector 1999-2004



Growth in HD capacity and patient, MOH sector 1999-2004

Table 2.3.1: Dialysis Treatment Rate by Gender, per million male or female population 1995–2004

Gender	1995	1996	1997	1998	1999	2000	2001	2002	2003	2004
Male	39	51	63	63	81	92	97	109	120	114
Female	32	45	49	57	61	73	88	93	93	98

Figure 2.3.1: Dialysis Treatment by Gender 1995 – 2004

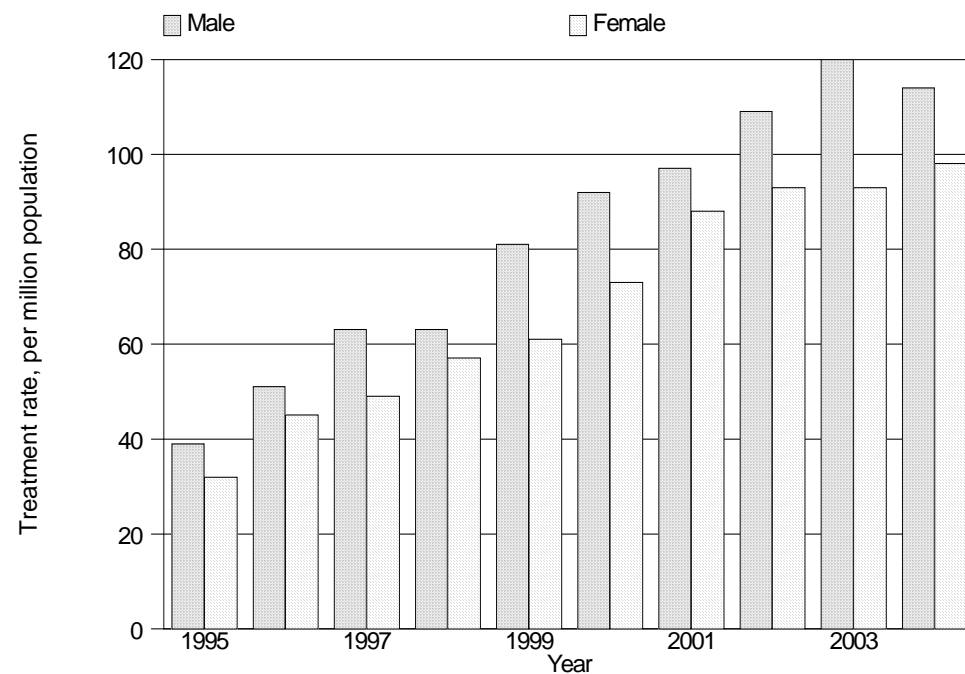
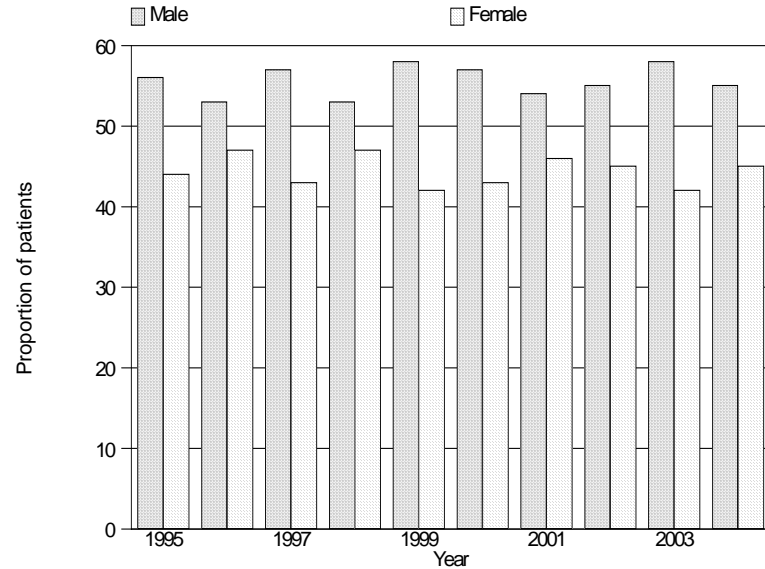


Table 2.3.2: Gender distribution of Dialysis Patients 1995-2004

Year	1995	1996	1997	1998	1999	2000	2001	2002	2003	2004
New Dialysis patients	684	952	1133	1249	1542	1833	2071	2310	2540	2538
% Male	56	53	57	53	58	57	54	55	58	55
% Female	44	47	43	47	42	43	46	45	42	45
Dialysing at 31st December	2232	2919	3694	4534	5536	6690	7830	9079	10342	11554
% Male	59	57	57	56	56	56	55	55	55	55
% Female	41	43	43	44	44	44	45	45	45	45

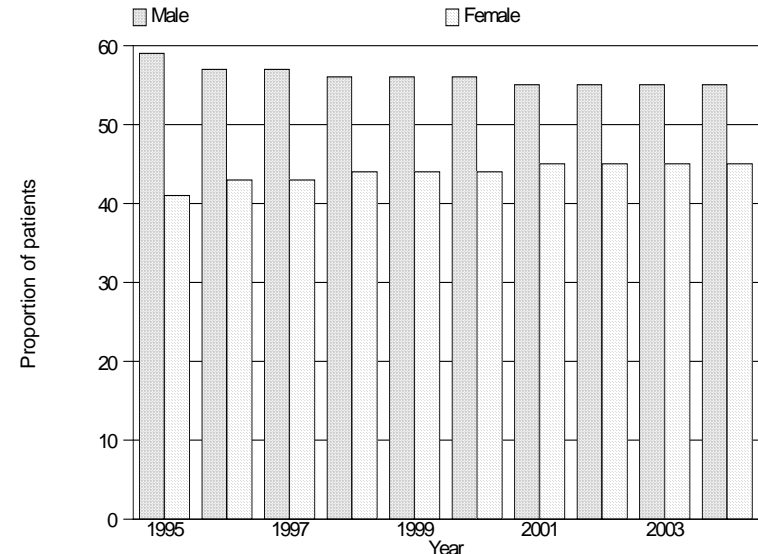
Figure 2.3.2: Gender Distribution of Dialysis patients 1995 – 2004

(a) New Dialysis patients



Gender distribution of new dialysis patients, 1995-2004

(b) Dialysing patients at 31st December



Gender distribution of dialysing patients at 31st Dec, 1995-2004

**Table 2.3.3: Dialysis Treatment Rate by Age Group, per million age group population
1995 – 2004**

Age groups (years)	1995	1996	1997	1998	1999	2000	2001	2002	2003	2004
1-14	1	3	3	3	3	4	4	5	4	4
15-24	10	13	15	15	16	18	22	28	25	25
25-34	31	39	39	41	42	46	47	53	50	47
35-44	59	67	80	81	86	98	102	100	99	104
45-54	120	153	166	173	224	247	249	268	273	270
55-64	158	230	289	310	369	430	508	530	576	522
>=65	110	169	214	228	300	348	434	493	567	573

Figure 2.3.3: Dialysis Treatment Rate by Age Group 1995 - 2004

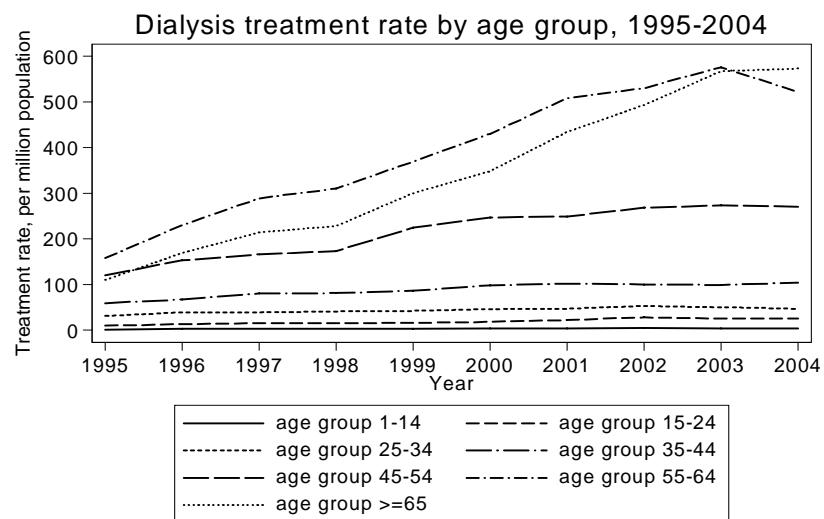
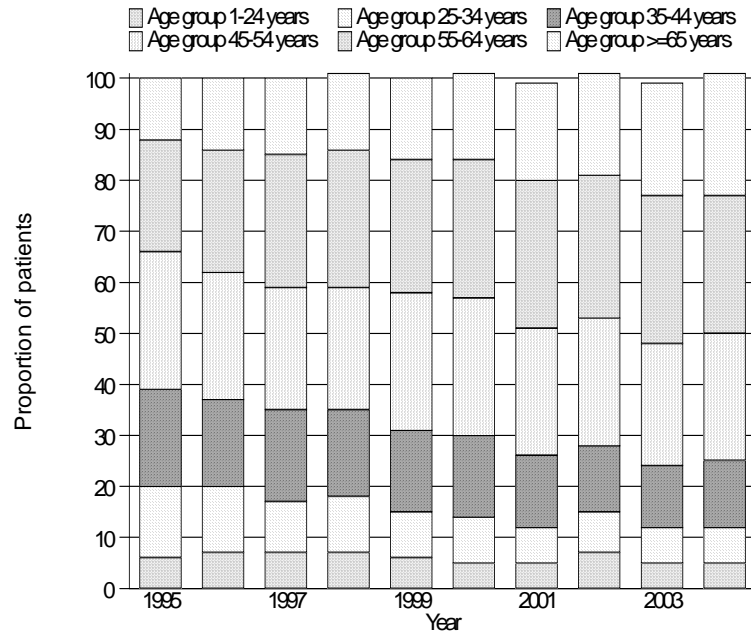


Table 2.3.4: Percentage Age Distribution of Dialysis Patients 1995 – 2004

Year	1995	1996	1997	1998	1999	2000	2001	2002	2003	2004
New Dialysis patients	684	952	1133	1249	1542	1833	2071	2310	2540	2538
% 1-14 years	1	2	2	2	2	1	1	2	1	1
% 15-24 years	5	5	5	5	4	4	4	5	4	4
% 25-34 years	14	13	10	11	9	9	7	8	7	7
% 35-44 years	19	17	18	17	16	16	14	13	12	13
% 45-54 years	27	25	24	24	27	27	25	25	24	25
% 55-64 years	22	24	26	27	26	27	29	28	29	27
% >=65 years	12	14	15	15	16	17	19	20	22	24
Dialysing at 31st December	2232	2919	3694	4534	5536	6690	7830	9079	10342	11554
% 1-14 years	1	2	2	2	2	2	1	1	1	1
% 15-24 years	6	6	5	5	5	5	5	5	5	5
% 25-34 years	19	18	17	16	15	14	13	12	11	11
% 35-44 years	26	24	23	22	21	20	20	19	18	18
% 45-54 years	24	24	24	24	25	25	25	25	25	26
% 55-64 years	17	19	20	21	22	22	23	24	24	24
% >=65 years	7	8	9	10	11	12	13	14	14	15

Figure 2.3.4: Age Distribution of New Dialysis patients 1995 – 2004

(a) New Dialysis patients



(b) Dialysing patients at 31st December

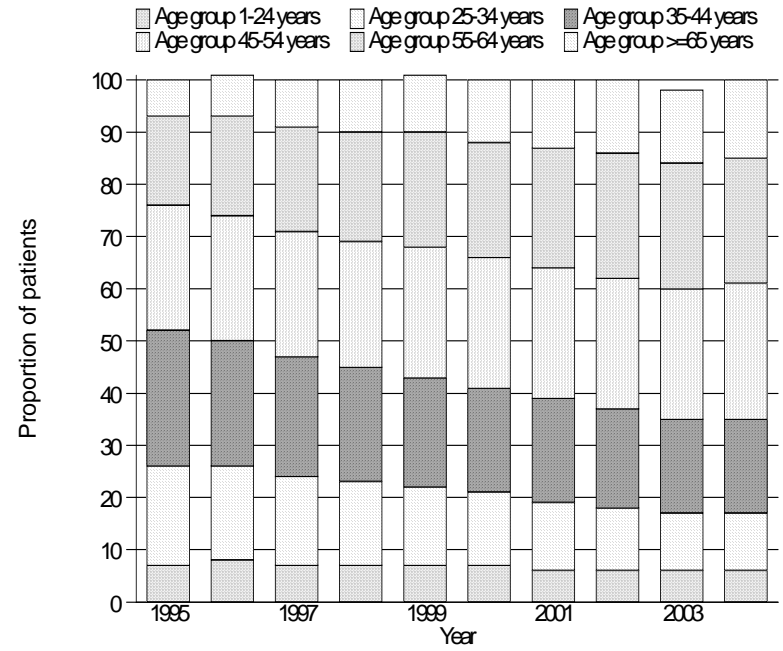
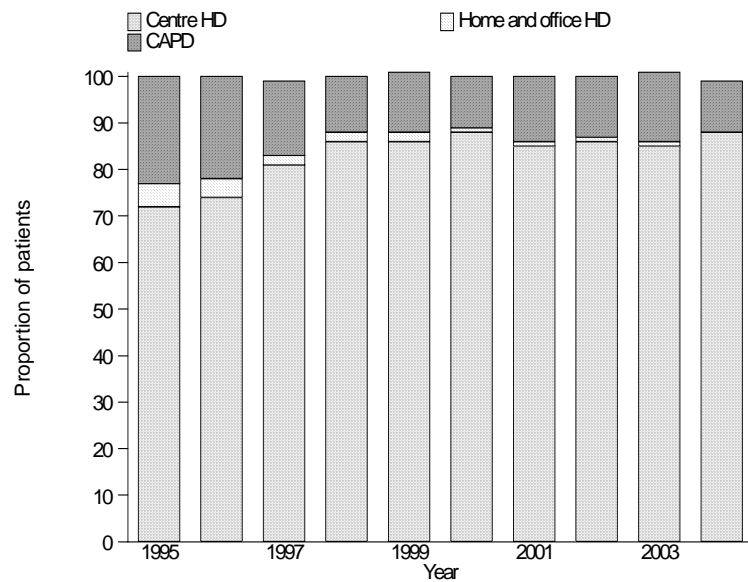


Table 2.3.5: Method and Location of Dialysis 1995 – 2004

Year	1995	1996	1997	1998	1999	2000	2001	2002	2003	2004
New Dialysis patients	684	952	1133	1249	1542	1833	2071	2310	2540	2538
% Centre HD	72	74	81	86	86	88	85	86	85	88
% Home and office HD	5	4	2	2	2	1	1	1	1	0
% CAPD	23	22	16	12	13	11	14	13	15	11
Dialysing at 31st December	2232	2919	3694	4534	5536	6690	7830	9079	10342	11554
% Centre HD	72	75	79	83	85	87	87	88	88	89
% Home and office HD	13	9	7	6	4	3	3	2	2	2
% CAPD	15	15	14	12	11	10	10	10	10	10

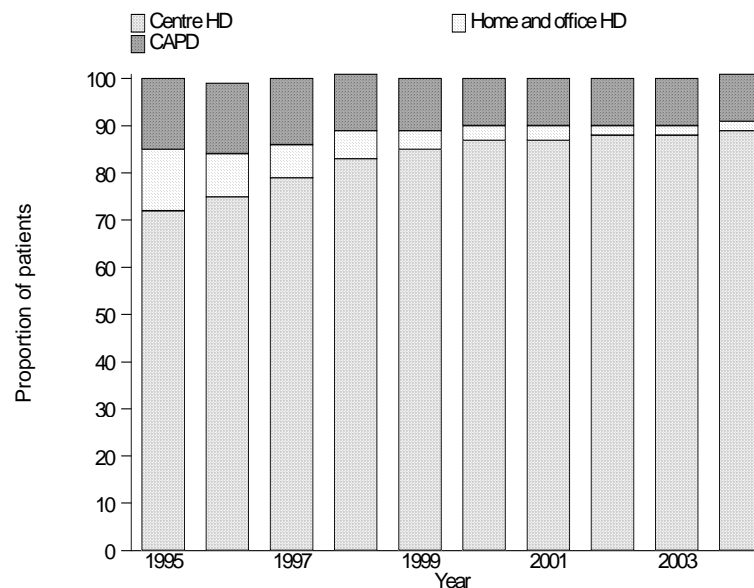
Figure 2.3.5: Method and Location of Dialysis Patients 1995 – 2004

(a) New Dialysis patients



Method and Location of New Dialysis Patients, 1995-2004

(b) Dialysing patients at 31st December



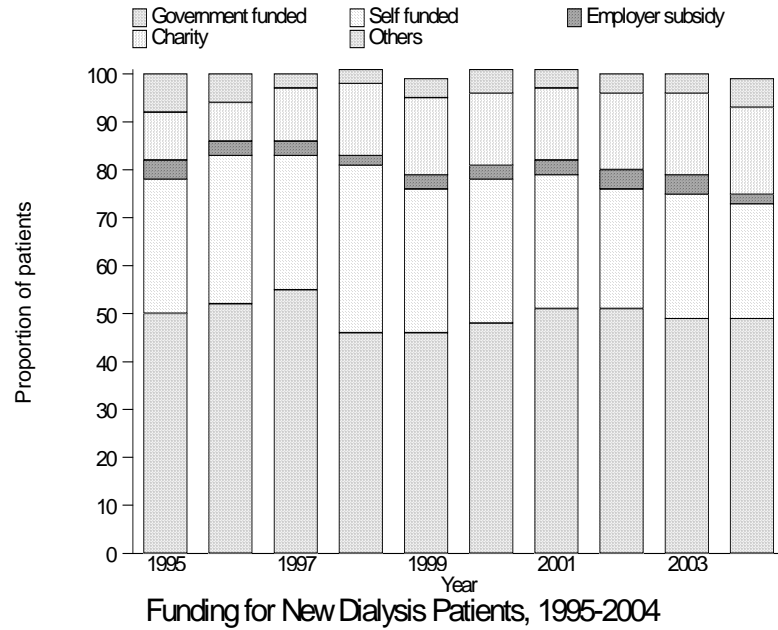
Method and Location of Dialysing Patients at 31st Dec, 1995-2004

Table 2.3.6: Funding for Dialysis Treatment 1995 – 2004

Year	1995	1996	1997	1998	1999	2000	2001	2002	2003	2004
New Dialysis patients	684	952	1133	1249	1542	1833	2071	2310	2540	2538
% by Government	50	52	55	46	46	48	51	51	49	49
% self funded	28	31	28	35	30	30	28	25	26	24
% subsidized by Employer	4	3	3	2	3	3	3	4	4	2
% by Charity	10	8	11	15	16	15	15	16	17	18
% Others	8	6	3	3	4	5	4	4	4	6
Dialysing at 31st December	2232	2919	3694	4534	5536	6690	7830	9079	10342	11554
% by Government	60	57	57	53	51	51	51	51	51	51
% self funded	24	26	26	28	28	27	27	25	24	24
% subsidized by Employer	5	5	4	4	4	4	4	4	4	4
% by Charity	8	8	10	12	13	14	15	16	17	17
% Others	3	4	3	3	4	4	4	4	4	5

Figure 2.3.6: Funding for Dialysis Treatment 1995 – 2004

(a) New Dialysis Patients



(b) Dialysing patients at 31st December

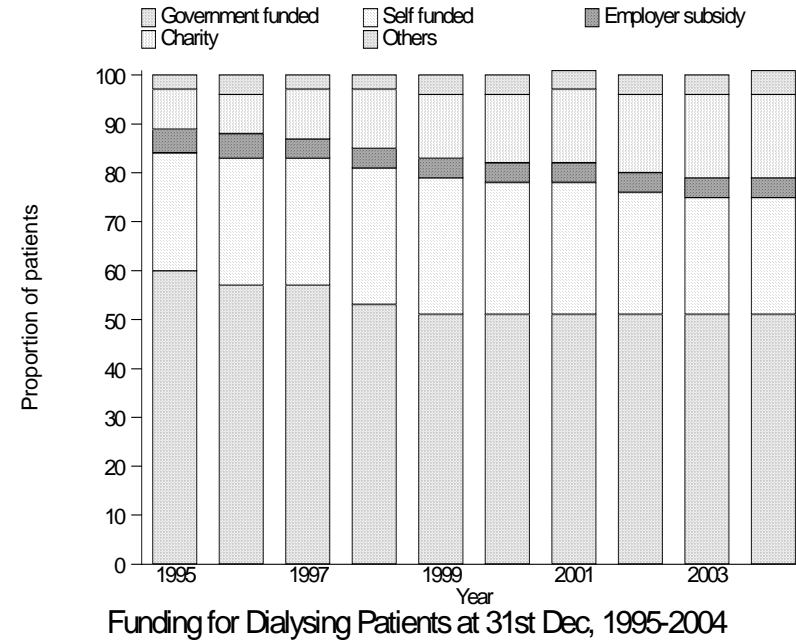
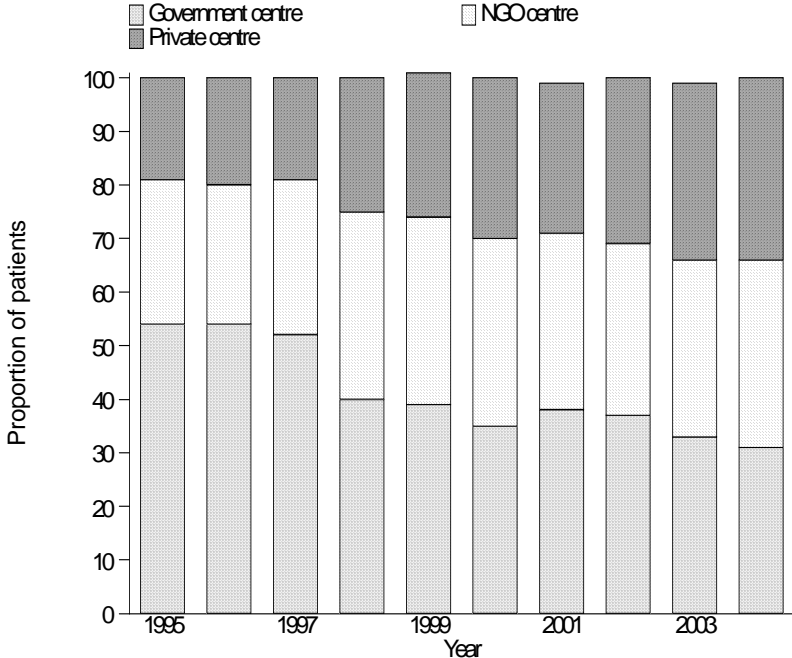


Table 2.3.7: Distribution of Dialysis Patients by Sector 1995 – 2004

Year	1995	1996	1997	1998	1999	2000	2001	2002	2003	2004
New Dialysis patients	684	952	1133	1249	1542	1833	2071	2310	2540	2538
% Government centre	54	54	52	40	39	35	38	37	33	31
% NGO centre	27	26	29	35	35	35	33	32	33	35
% Private centre	19	20	19	25	27	30	28	31	33	34
Dialysing at 31st December	2232	2919	3694	4534	5536	6690	7830	9079	10342	11554
% Government centre	65	60	56	51	46	43	42	41	39	37
% NGO centre	19	23	26	29	31	33	34	34	34	34
% Private centre	16	18	18	20	23	24	25	26	27	28

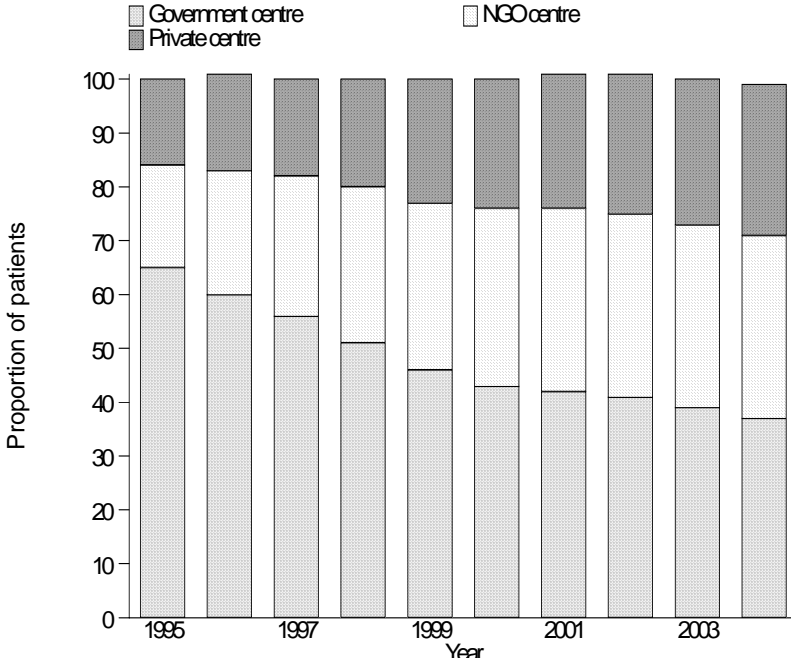
Figure 2.3.7: Distribution of Dialysis Patients by Sector 1995 – 2004

(a) New Dialysis Patients



Distribution of New Dialysis Patients by sector, 1995-2004

(b) Dialysing Patients at 31st December



Distribution of Dialysing Patients at 31st Dec by sector, 1995-2004

Figure 2.4.1: Primary Renal Disease for New Dialysis Patients 1995– 2004

