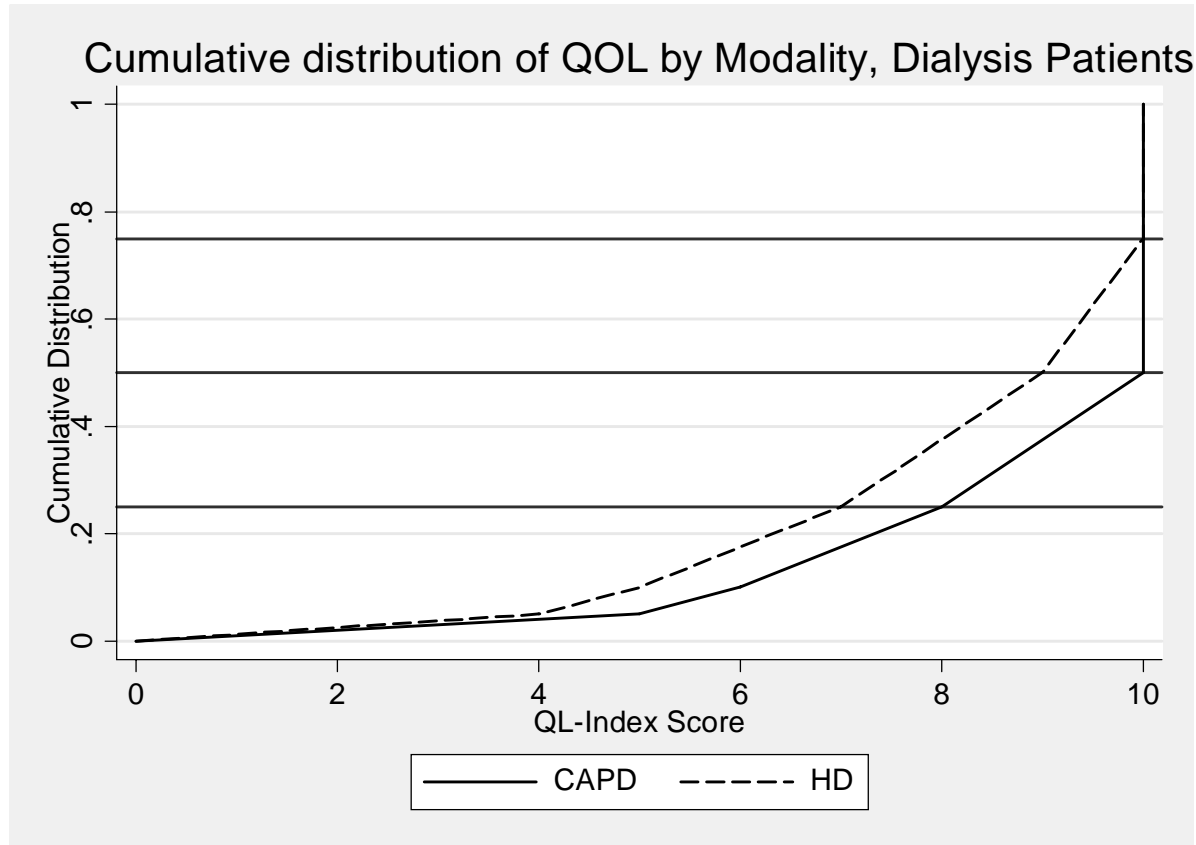


**Table 4.1: Cumulative distribution of QoL-Index score in relation to Dialysis modality,
All Dialysis patients 1997-2004**

Dialysis modality	CAPD	HD
Number of patients	1856	9224
Centile		
0	0	0
0.05	5	4
0.10	6	5
0.25 (LQ)	8	7
0.5 (median)	10	9
0.75 (UQ)	10	10
0.90	10	10
0.95	10	10
1	10	10

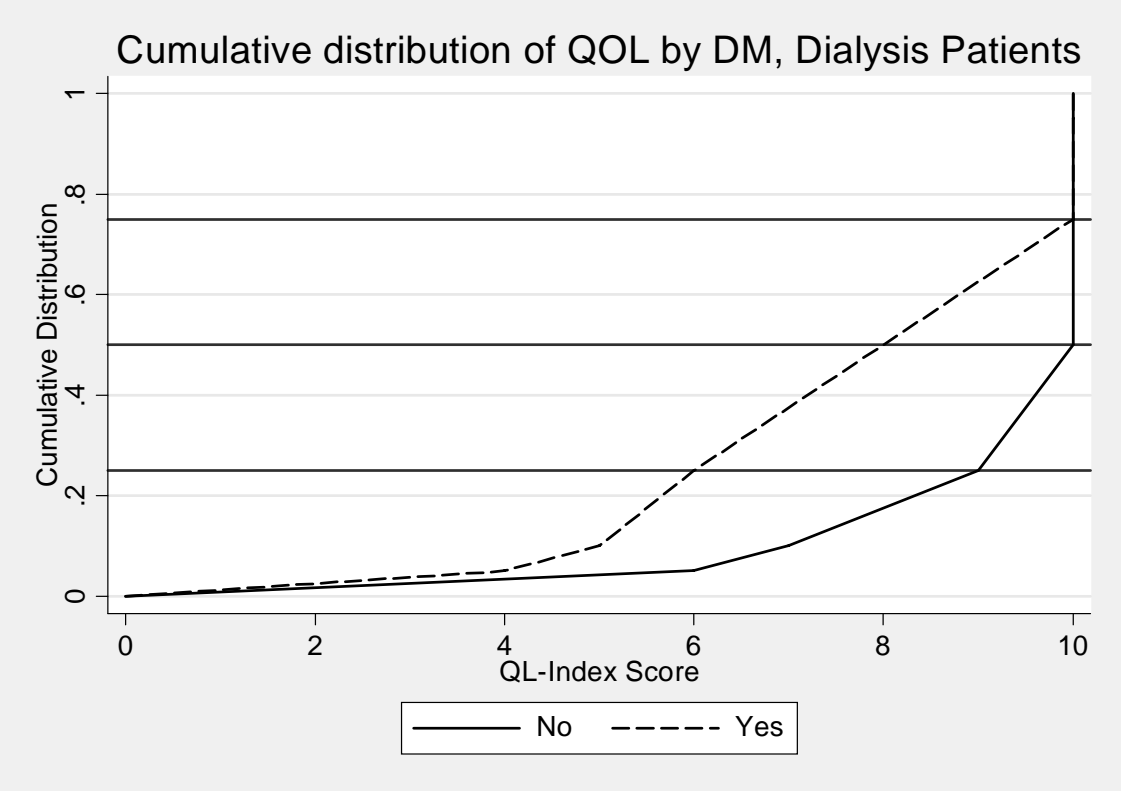
Figure 4.1: Cumulative distribution of QoL-Index score in relation to Dialysis modality, All Dialysis patients 1997-2004



**Table 4.2: Cumulative distribution of QoL-Index score in relation to Diabetes mellitus,
All Dialysis patients 1997-2004**

Diabetes mellitus	No	Yes
Number of patients	6280	4800
Centile		
0	0	0
0.05	6	4
0.10	7	5
0.25 (LQ)	9	6
0.5 (median)	10	8
0.75 (UQ)	10	10
0.90	10	10
0.95	10	10
1	10	10

Figure 4.2: Cumulative distribution of QoL-Index score in relation to Diabetes mellitus, All Dialysis patients 1997-2004



**Table 4.3: Cumulative distribution of QoL-Index score in relation to Gender,
All Dialysis patients 1997-2004**

Gender	Male	Female
Number of patients	6143	4937
Centile		
0	0	0
0.05	5	4
0.10	6	5
0.25 (LQ)	8	7
0.5 (median)	9	9
0.75 (UQ)	10	10
0.90	10	10
0.95	10	10
1	10	10

Figure 4.3: Cumulative distribution of QoL-Index score in relation to Gender, All Dialysis patients 1997-2004

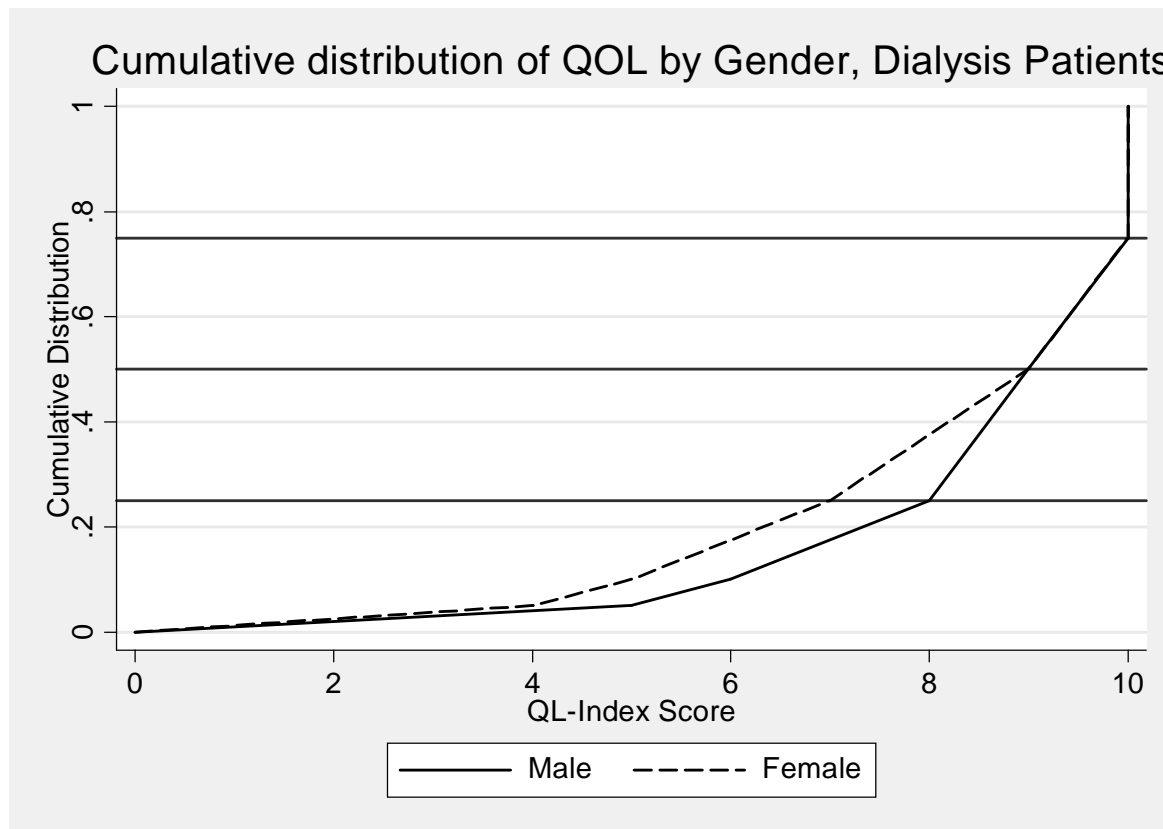


Table 4.4: Cumulative distribution of QoL-Index score in relation to Age, All Dialysis patients 1997-2004

Age group (years)	<20	20-39	40-59	>=60
Number of patients	473	2079	5415	3113
Centile				
0	0	0	0	0
0.05	6	7	5	4
0.10	8	8	6	5
0.25 (LQ)	9	9	8	6
0.5 (median)	10	10	9	8
0.75 (UQ)	10	10	10	9
0.90	10	10	10	10
0.95	10	10	10	10
1	10	10	10	10

Figure 4.4: Cumulative distribution of QoL-Index score in relation to Age, All Dialysis patients 1997-2004

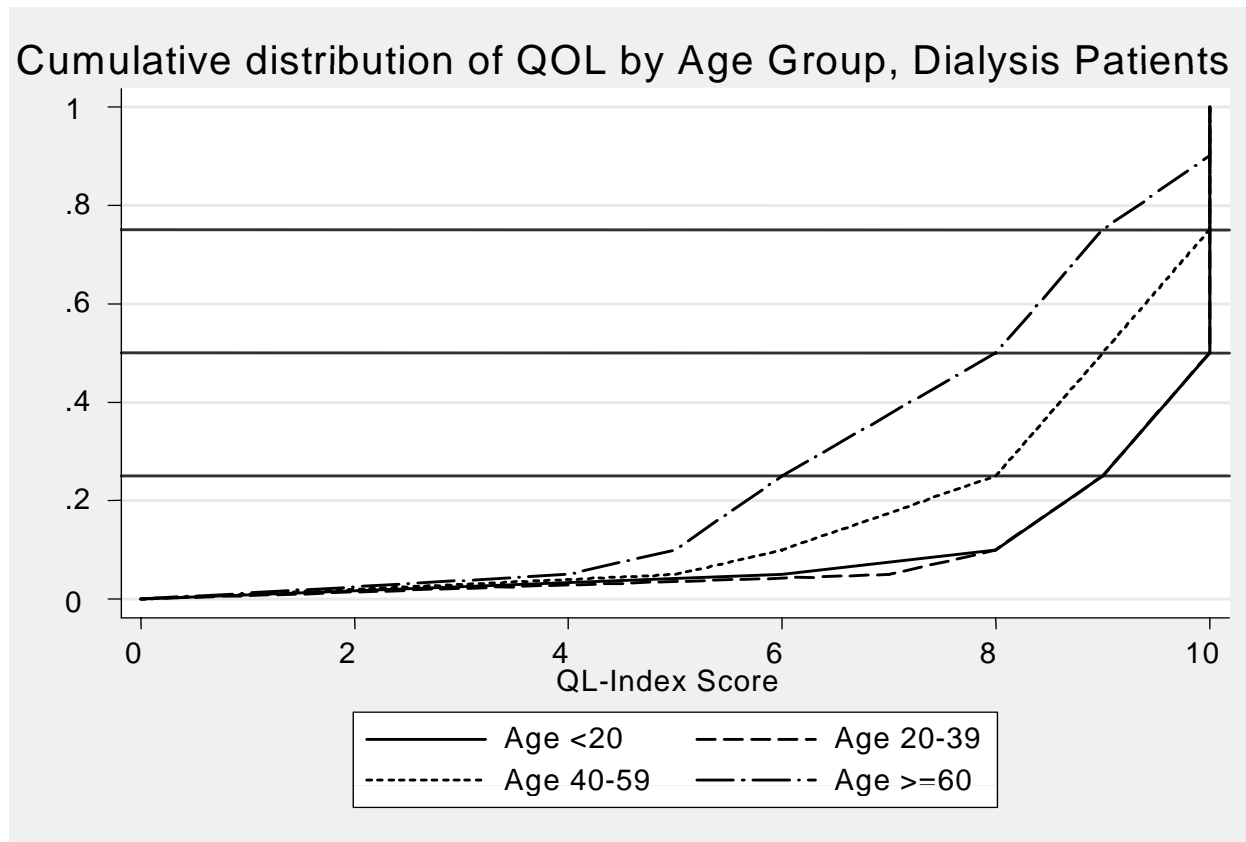


Figure 4.5: Cumulative distribution of QoL-Index score in relation to Year of entry, HD patients 1997-2004

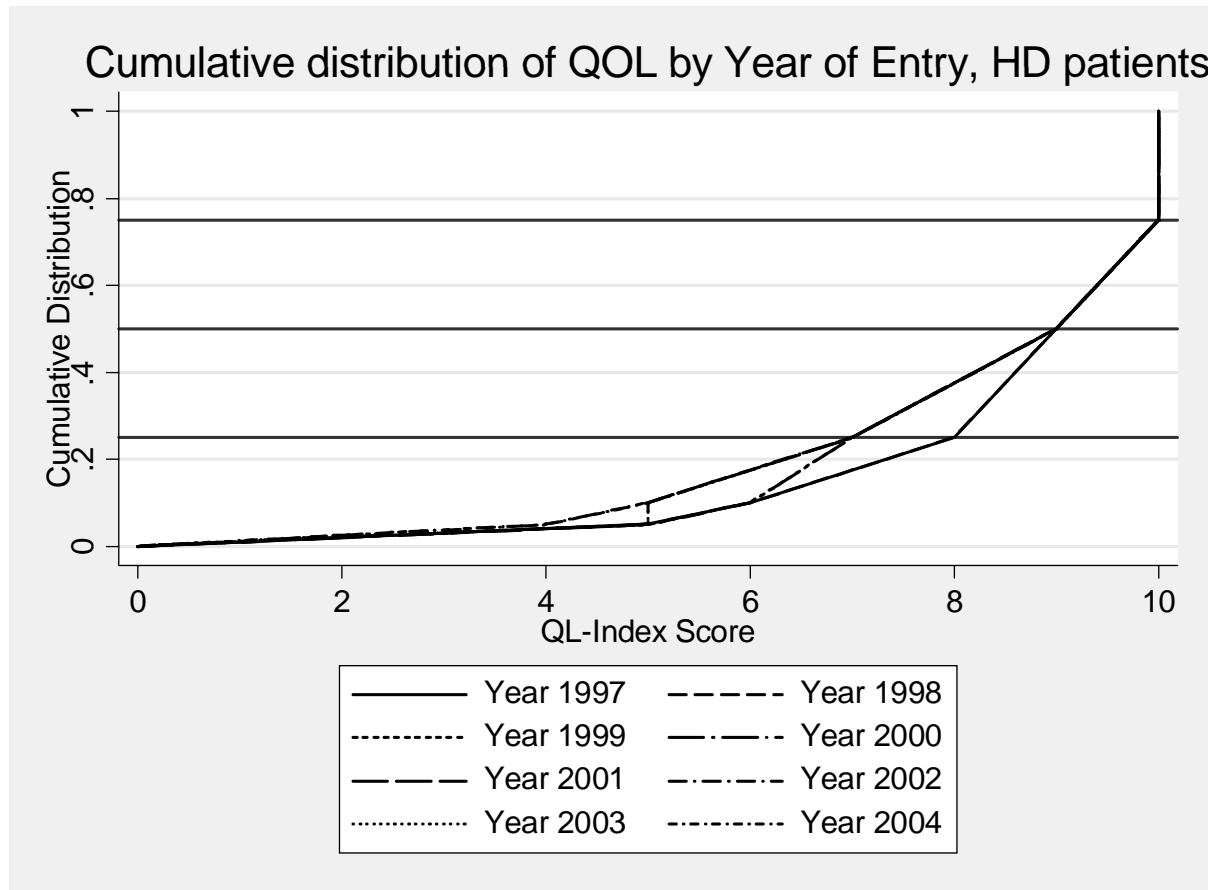


Figure 4.6: Cumulative distribution of QoL-Index score in relation to Year of entry, CAPD patients 1997-2004

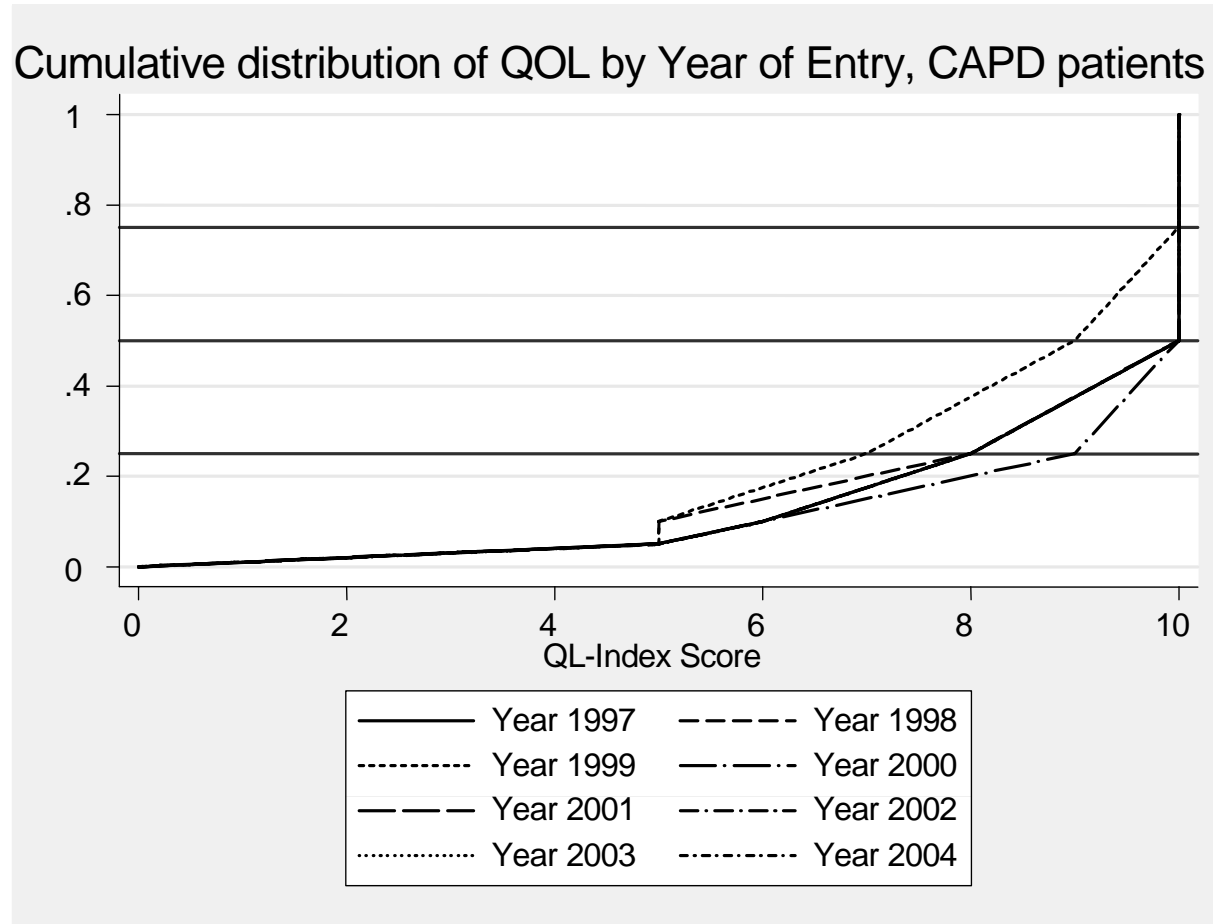


Table 4.7: Work related rehabilitation in relation to Modality, Dialysis patients 1997-2004

Modality	CAPD		HD	
	N	%	N	%
Number of patients	601		3831	
Able to return for Full or Part time for pay	443	74	2751	72
Unable to work for pay*	158	26	1080	28

Table 4.8: Work related rehabilitation in relation to Year of Entry, HD patients 1997-2004

Year	1997		1998		1999		2000		2001		2002		2003		2004	
	N	%	N	%	N	%	N	%	N	%	N	%	N	%	N	%
Number of patients	362		402		493		530		524		568		521		431	
Able to return for Full or Part time for pay	298	82	317	79	376	76	406	77	359	69	404	71	357	69	234	54
Unable to work for pay*	64	18	85	21	117	24	124	23	165	31	164	29	164	31	197	46

* Exclude patients unable to find employment for non-health related reasons

Table 4.9: Work related rehabilitation in relation to Year of Entry, CAPD patients 1997-2004

Year	1997		1998		1999		2000		2001		2002		2003		2004	
	N	%	N	%	N	%	N	%	N	%	N	%	N	%	N	%
Number of patients	70		38		47		61		79		111		126		69	
Able to return for Full or Part time for pay	51	73	31	82	35	74	40	66	65	82	84	76	90	71	47	68
Unable to work for pay*	19	27	7	18	12	26	21	34	14	18	27	24	36	29	22	32

* Exclude patients unable to find employment for non-health related reasons