

Table 7.1.1: Distribution of serum Albumin (g/L), HD patients 1997-2004

Year	No. of subjects	Mean	SD	Median	LQ	UQ	% patients <30g/L	% patients 30- <35g/L	% patients 35- <40g/L	% patients ≥40g/L
1997	1644	40.9	6.2	41	37.7	44.3	3	8	30	59
1998	2075	41.2	6.5	41	37.5	44.7	3	9	28	59
1999	2755	39.7	6.1	39.7	36.3	43	4	13	35	49
2000	3734	38.6	7	39	36	42	5	11	41	43
2001	4666	39	5.6	38.5	36	41.8	3	15	44	38
2002	5568	39.2	5.6	39	36.5	42	3	12	42	43
2003	6529	39.9	5.4	40	37.3	42.5	3	9	35	52
2004	7511	40	5.2	40	37.3	42.8	3	10	34	54

Figure 7.1.1: Cumulative distribution of Albumin (g/L), HD patients 1997-2004

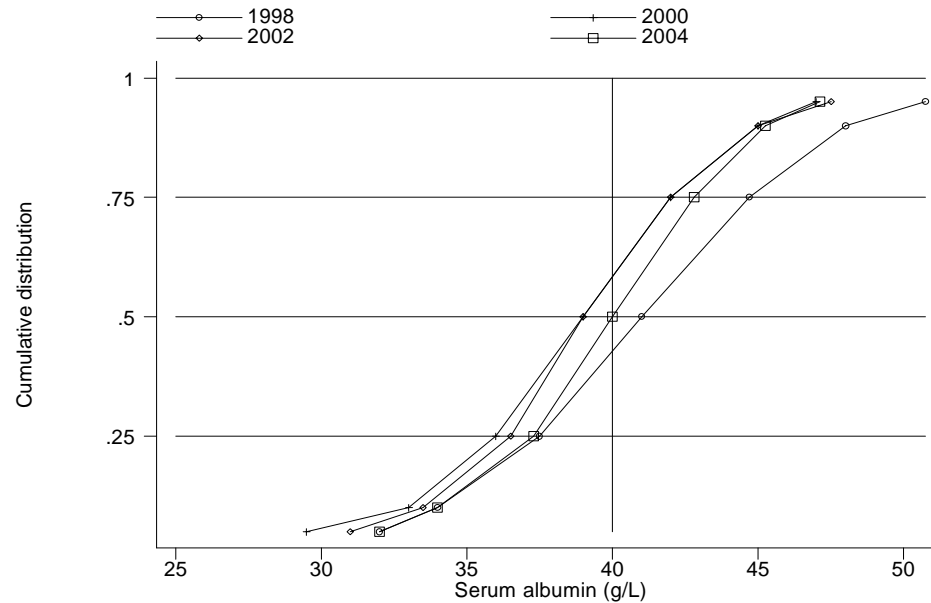


Table 7.1.2: Distribution of serum Albumin (g/L), CAPD patients 1997-2004

Year	No. of subjects	Mean	SD	Median	LQ	UQ	% patients <30g/L	% patients 30- <35g/L	% patients 35- <40g/L	% patients ≥40g/L
1997	471	35.7	6.8	35.7	31.5	39.5	16	28	34	22
1998	536	35.8	6.7	36	32	39.7	16	25	35	24
1999	597	34.1	6.6	34	30.8	38	21	33	32	14
2000	640	34.3	6.1	35	31	38.3	20	28	37	14
2001	750	33.3	6.2	33.6	29.3	37	27	33	28	12
2002	862	33.9	5.9	34.3	30.8	37.5	21	35	33	12
2003	1182	33.3	5.8	33.8	29.7	37.3	26	33	30	11
2004	1285	33	6	33.8	29.5	37.3	27	32	30	11

Figure 7.1.2: Cumulative distribution of Albumin (g/L), CAPD patients 1997-2004

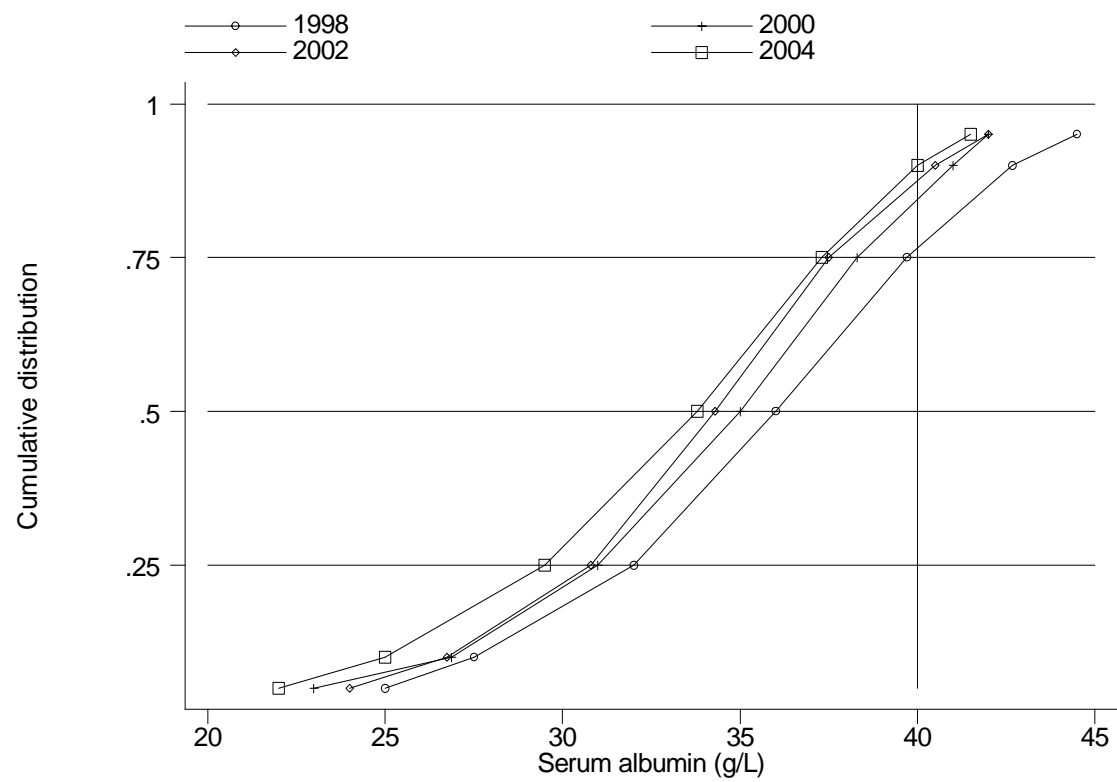


Table 7.1.3: Variation in Proportion of patients with serum albumin \geq 40g/L among HD centres 2004

Year	No. of centres	Min	5 th Centile	LQ	Median	UQ	95 th Centile	Max
1997	46	3	10	32	59.5	77	95	96
1998	45	9	14	31	59	80	95	97
1999	64	4	8	20	50.5	71	90	95
2000	92	0	3	21	39	62.5	84	98
2001	111	0	2	13	40	57	89	100
2002	132	0	7	21	43.5	62.5	83	100
2003	150	0	15	39	56.5	70	91	100
2004	182	4	10	36	60	74	88	100

Figure 7.1.3: Variation in Proportion of patients with serum albumin \geq 40g/L, HD centres 2004

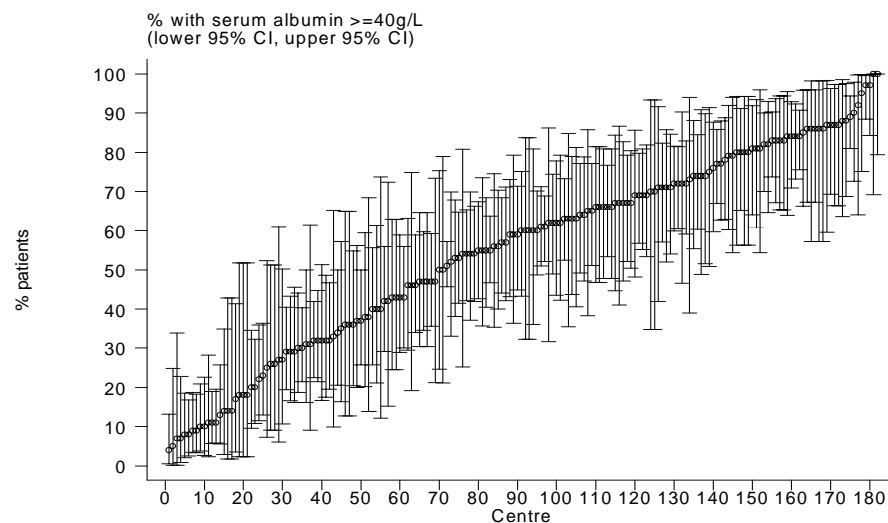


Table 7.1.4: Variation in Proportion of patients with serum albumin \geq 40g/L among CAPD centres 2004

Year	No. of centres	Min	5 th Centile	LQ	Median	UQ	95 th Centile	Max
1997	7	5	5	10	28	29	59	59
1998	9	0	0	7	19	35	36	36
1999	9	2	2	10	13	22	29	29
2000	11	0	0	5	17	28	42	42
2001	12	1	1	4	16.5	27.5	38	38
2002	14	4	4	6	10.5	16	35	35
2003	17	0	0	5	12	14	48	48
2004	17	0	0	5	14	21	34	34

Figure 7.1.4: Variation in Proportion of patients with serum albumin \geq 40g/L, CAPD centres 2004

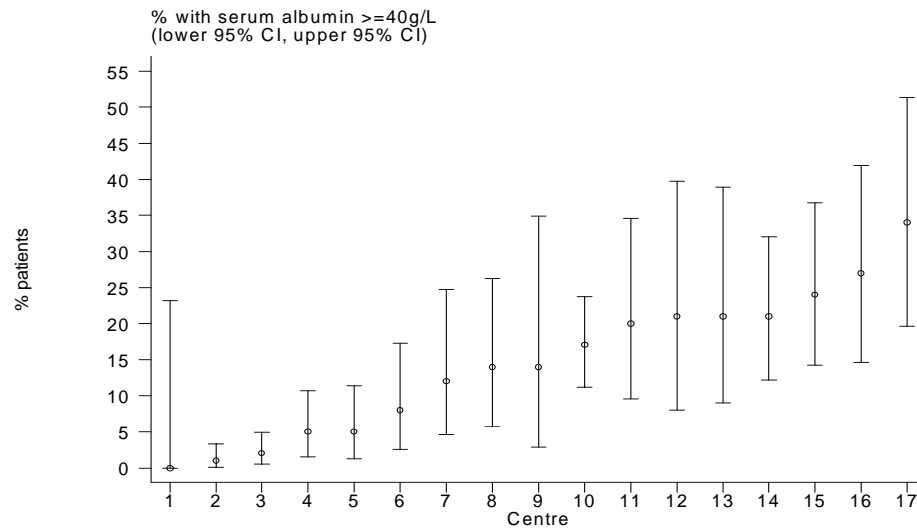


Table 7.2.1: Distribution of BMI, HD patients 1997-2004

Year	No of subjects	Mean	SD	Median	LQ	UQ	% patients <18.5	% patients 18.5-25	% patients >=25
1997	1542	23.8	17.2	21.5	19.1	24.3	19	61	20
1998	1978	24.3	19.4	21.6	19.1	24.3	19	60	21
1999	2704	23.7	17.1	21.4	19.2	24.4	18	61	21
2000	3839	23.1	12.8	21.6	19.3	24.5	18	60	22
2001	4520	23.1	12	21.9	19.3	24.7	18	59	23
2002	5032	23.3	11.7	22	19.5	24.9	16	59	24
2003	5902	23.2	10.8	22.1	19.5	25.1	16	58	26
2004	6639	23.4	9.9	22.4	19.8	25.4	14	58	28

Figure 7.2.1: Cumulative distribution of BMI, HD patients 1997-2004

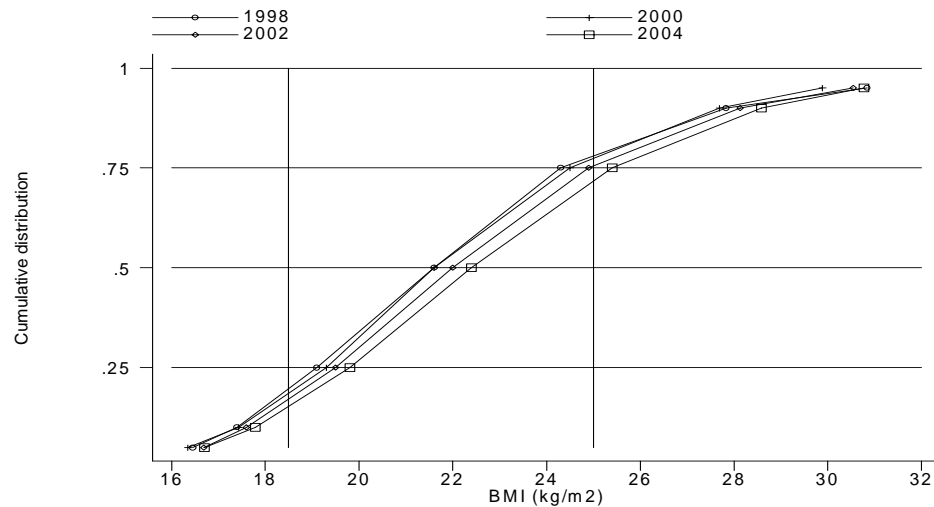


Table 7.2.2: Distribution of BMI, CAPD patients 1997-2004

Year	No of subjects	Mean	SD	Median	LQ	UQ	% patients <18.5	% patients 18.5-25	% patients >=25
1997	420	22.6	12.5	21.9	18.9	24.7	21	56	23
1998	491	22.1	11.1	21.3	18.7	24	22	57	20
1999	552	21.8	4.4	21.5	18.9	24.5	22	56	22
2000	602	21.7	4.4	21.5	18.6	24.6	25	53	22
2001	663	22.2	4.8	21.8	18.7	25.2	23	50	26
2002	750	22.4	4.8	22.1	18.8	25.5	23	48	30
2003	1064	23	6.8	22.6	19.2	25.8	19	51	30
2004	1167	23.2	7.1	22.6	19.5	26.1	17	51	31

Figure 7.2.2: Cumulative distribution of BMI, CAPD patients 1997-2004

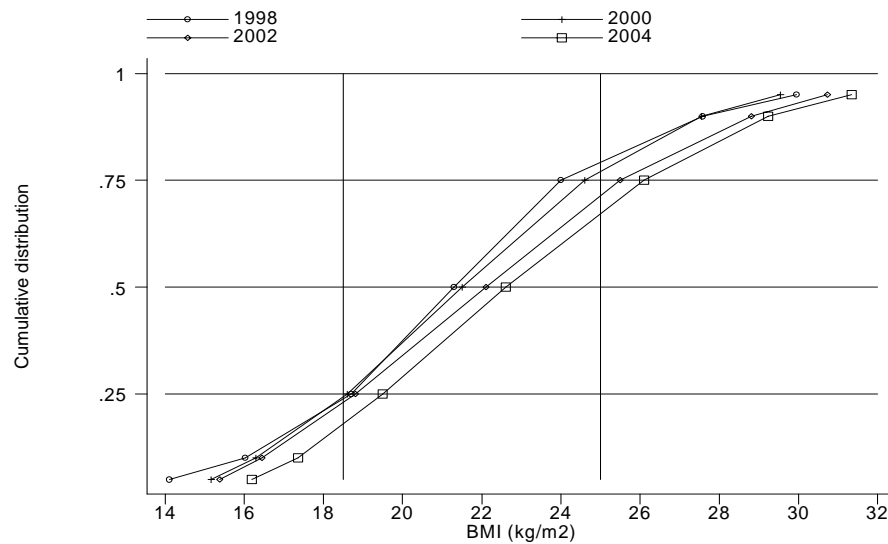


Table 7.2.3: Variation in Proportion of patients with BMI ³ 18.5 among HD centres 2004

Year	No. of centres	Min	5 th Centile	LQ	Median	UQ	95 th Centile	Max
1997	46	60	64	75	80.5	88	100	100
1998	45	63	68	76	80	85	96	96
1999	64	58	68	77	83	88.5	94	100
2000	94	59	69	78	83	88	95	100
2001	108	56	68	77	82	88	93	100
2002	123	60	69	77	84	89	100	100
2003	147	57	71	79	85	90	100	100
2004	171	61	70	81	86	90	100	100

Figure 7.2.3: Variation in Proportion of patients with BMI \geq 18.5, HD centres 2004

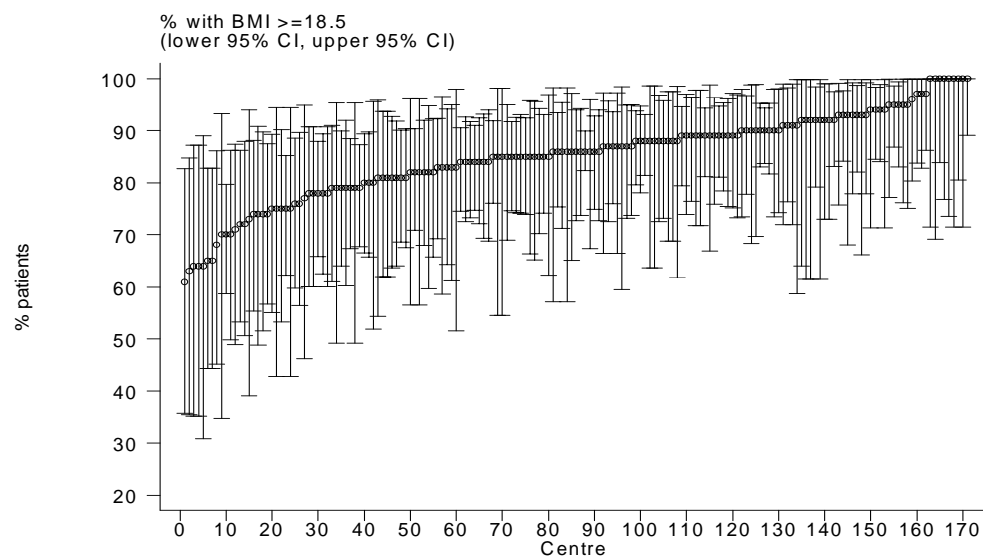


Table 7.2.4: Variation in Proportion of patients with BMI ³ 18.5 among CAPD centres 2004

Year	No. of centres	Min	5 th Centile	LQ	Median	UQ	95 th Centile	Max
1997	7	50	50	74	81	88	93	93
1998	9	15	15	78	89	91	100	100
1999	9	0	0	67	76	83	95	95
2000	11	13	13	71	76	88	89	89
2001	12	17	17	73	79	86.5	90	90
2002	14	32	32	74	81.5	84	92	92
2003	17	26	26	80	85	88	100	100
2004	17	41	41	76	86	89	95	95

Figure 7.2.4: Variation in Proportion of patients with BMI \geq 18.5, CAPD centres 2004

