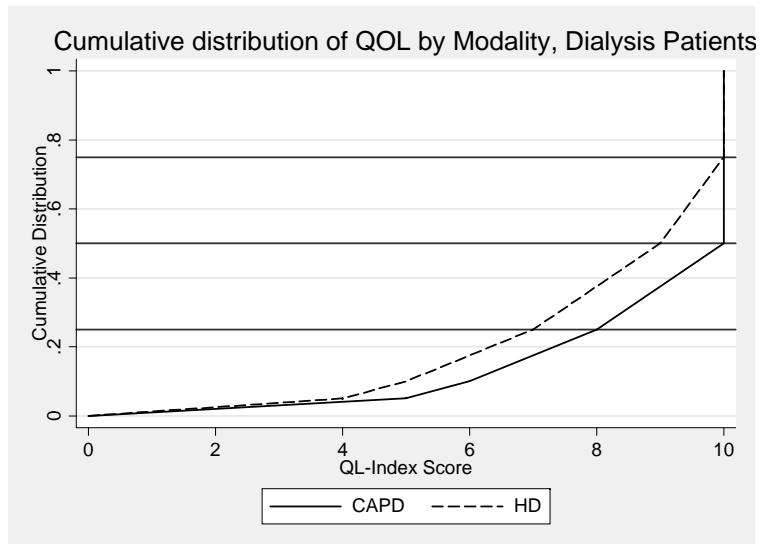


**Table 4.1: Cumulative distribution of QoL-Index score in relation to dialysis modality, All Dialysis patients 1997-2005**

Dialysis modality	CAPD	HD
Number of patients	2170	11424
Centile		
0	0	0
0.05	5	4
0.10	6	5
0.25 (LQ)	8	7
0.5 (median)	10	9
0.75 (UQ)	10	10
0.90	10	10
0.95	10	10
1	10	10

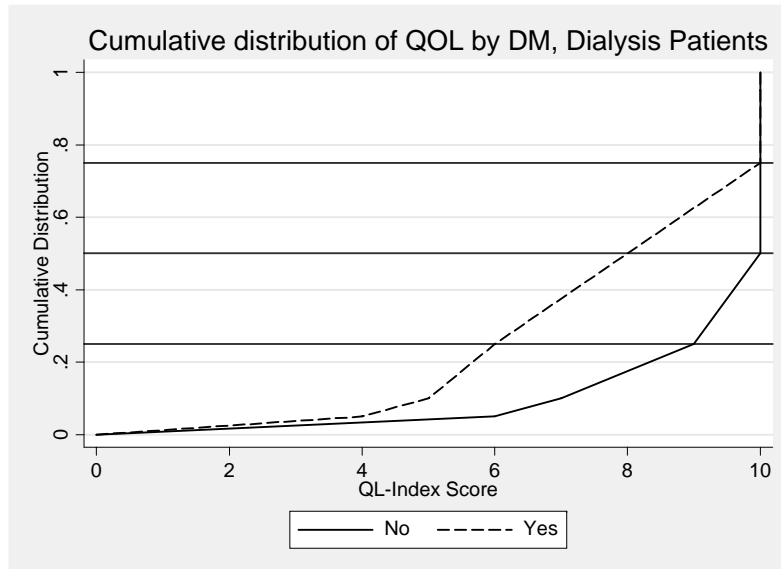
**Figure 4.1: Cumulative distribution of QoL-Index score in relation to Dialysis modality, All Dialysis patients 1997-2005**



**Table 4.2: Cumulative distribution of QoL-Index score in relation to Diabetes mellitus, All Dialysis patients 1997-2005**

Diabetes mellitus	No	Yes
Number of patients	7480	6114
Centile		
0	0	0
0.05	6	4
0.10	7	5
0.25 (LQ)	9	6
0.5 (median)	10	8
0.75 (UQ)	10	10
0.90	10	10
0.95	10	10
1	10	10

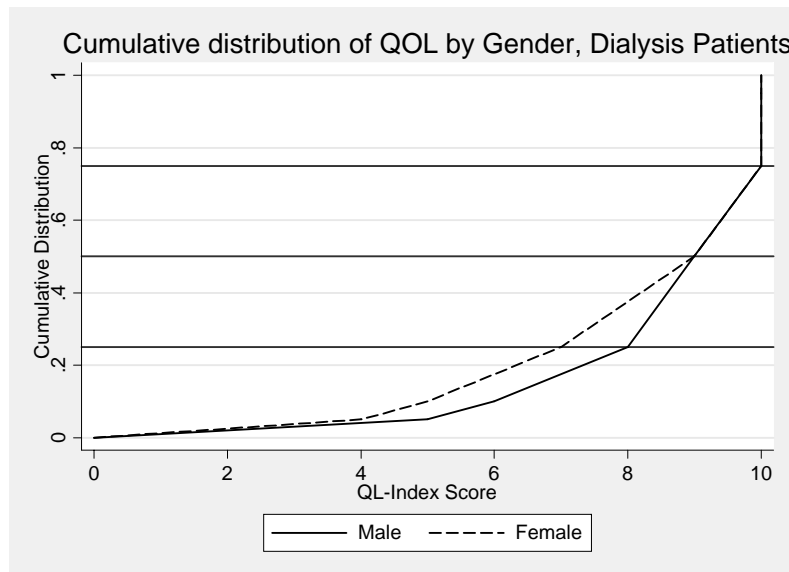
**Figure 4.2: Cumulative distribution of QoL-Index score in relation to Diabetes mellitus, All Dialysis patients 1997-2005**



**Table 4.3: Cumulative distribution of QoL-Index score in relation to Gender, All Dialysis patients 1997-2005**

Gender	Male	Female
Number of patients	7523	6071
Centile		
0	0	0
0.05	5	4
0.10	6	5
0.25 (LQ)	8	7
0.5 (median)	9	9
0.75 (UQ)	10	10
0.90	10	10
0.95	10	10
1	10	10

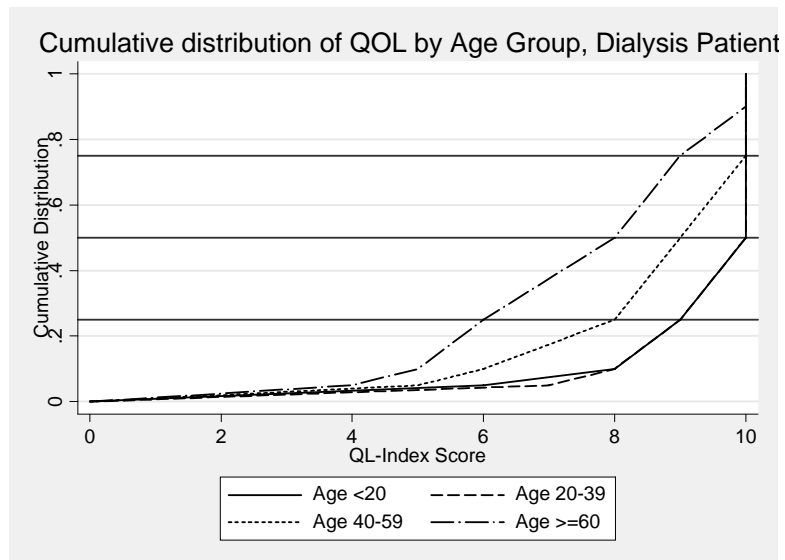
**Figure 4.3: Cumulative distribution of QoL-Index score in relation to Gender, All Dialysis patients 1997-2005**



**Table 4.4: Cumulative distribution of QoL-Index score in relation to Age, All Dialysis patients 1997-2005**

Age group (years)	<20	20-39	40-59	>=60
Number of patients	567	2494	6635	3898
Centile				
0	0	0	0	0
0.05	6	7	5	4
0.10	8	8	6	5
0.25 (LQ)	9	9	8	6
0.5 (median)	10	10	9	8
0.75 (UQ)	10	10	10	9
0.90	10	10	10	10
0.95	10	10	10	10
1	10	10	10	10

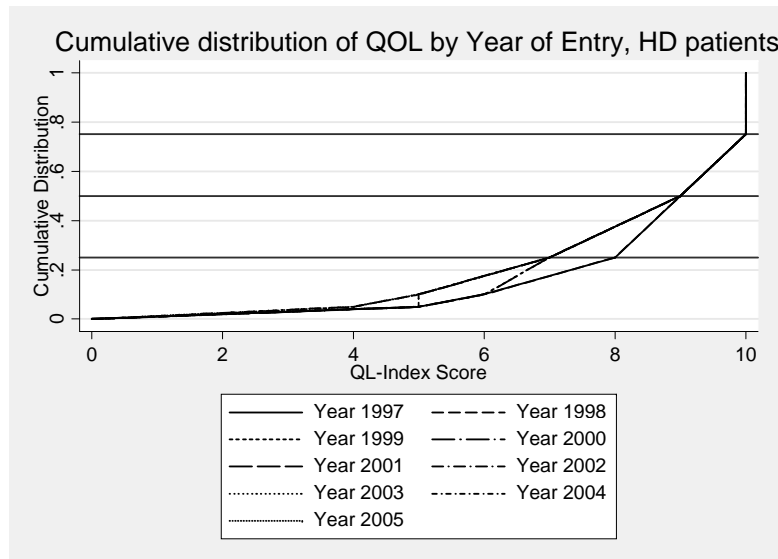
**Figure 4.4: Cumulative distribution of QoL-Index score in relation to Age, All Dialysis patients 1997-2005**



**Table 4.5: Cumulative distribution of QoL-Index score in relation to Year of entry, HD patients 1997-2005**

Year of Entry	1997	1998	1999	2000	2001	2002	2003	2004	2005
Number of patients	728	821	1021	1236	1384	1579	1563	1770	1322
Centile									
0	0	0	0	0	0	0	0	0	0
0.05	5	5	5	5	5	4	5	4	4
0.10	6	6	6	6	5	5	5	5	5
0.25 (LQ)	8	8	7	7	7	7	7	7	7
0.5 (median)	9	9	9	9	9	9	9	9	9
0.75 (UQ)	10	10	10	10	10	10	10	10	10
0.90	10	10	10	10	10	10	10	10	10
0.95	10	10	10	10	10	10	10	10	10
1	10	10	10	10	10	10	10	10	10

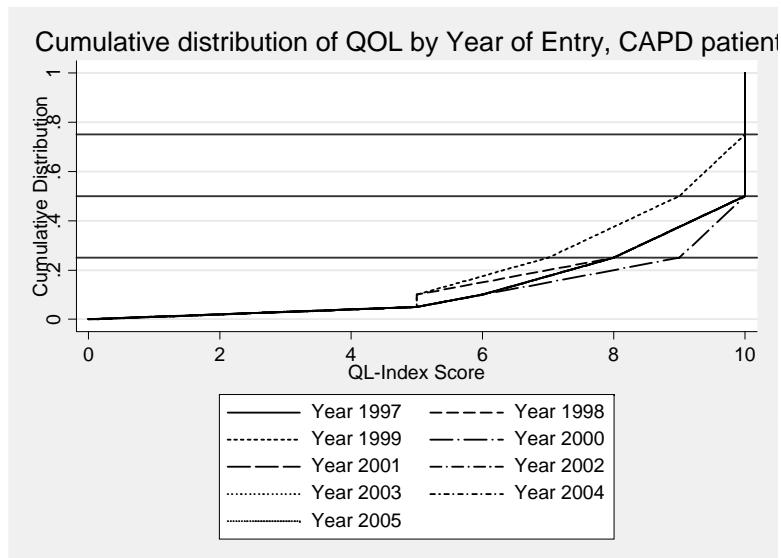
**Figure 4.5: Cumulative distribution of QoL-Index score in relation to Year of entry, HD patients 1997-2005**



**Table 4.6: Cumulative distribution of QoL-Index score in relation to Year of entry, CAPD patients 1997-2005**

Year of Entry	1997	1998	1999	2000	2001	2002	2003	2004	2005
Number of patients	164	117	166	188	269	319	368	302	277
Centile									
0	0	0	0	0	0	0	0	0	0
0.05	5	5	5	5	5	5	5	5	5
0.10	6	5	5	6	6	6	6	6	6
0.25 (LQ)	8	8	7	9	8	8	8	8	8
0.5 (median)	10	10	9	10	10	10	10	10	10
0.75 (UQ)	10	10	10	10	10	10	10	10	10
0.90	10	10	10	10	10	10	10	10	10
0.95	10	10	10	10	10	10	10	10	10
1	10	10	10	10	10	10	10	10	10

**Figure 4.6: Cumulative distribution of QoL-Index score in relation to Year of entry, CAPD patients 1997-2005**



**Table 4.7: Work related rehabilitation in relation to Modality, Dialysis patients 1997-2005**

Modality	CAPD		HD	
	N	%	N	%
Number of patients	722		4728	
Able to return for Full or Part time for pay	529	73	3386	72
Unable to work for pay*	193	27	1342	28

\* Exclude patients unable to find employment for non-health related reason

**Table 4.8: Work related rehabilitation in relation to Year of Entry, HD patients 1997-2005**

Year	1997		1998		1999		2000		2001		2002		2003		2004		2005	
	N	%	N	%	N	%	N	%	N	%	N	%	N	%	N	%	N	%
Number of patients	371		417		508		556		560		620		607		650		439	
Able to return for Full or Part time for pay	308	83	332	80	385	76	425	76	389	69	450	73	429	71	413	64	255	58
Unable to work for pay*	63	17	85	20	123	24	131	24	171	31	170	27	178	29	237	36	184	42

\* Exclude patients unable to find employment for non-health related reasons



**Table 4.9: Work related rehabilitation in relation to Year of Entry, CAPD patients 1997-2005**

Year	1997		1998		1999		2000		2001		2002		2003		2004		2005	
	N	%	N	%	N	%	N	%	N	%	N	%	N	%	N	%	N	%
Number of patients	70		38		47		62		81		114		132		86		92	
Able to return for Full or Part time for pay	51	73	31	82	35	74	41	66	66	81	87	76	100	76	60	70	58	63
Unable to work for pay*	19	27	7	18	12	26	21	34	15	19	27	24	32	24	26	30	34	37

\* Exclude patients unable to find employment for non-health related reasons