

**Table 5.01: Stock and Flow of Paediatric Renal Replacement Therapy 1990-2005**

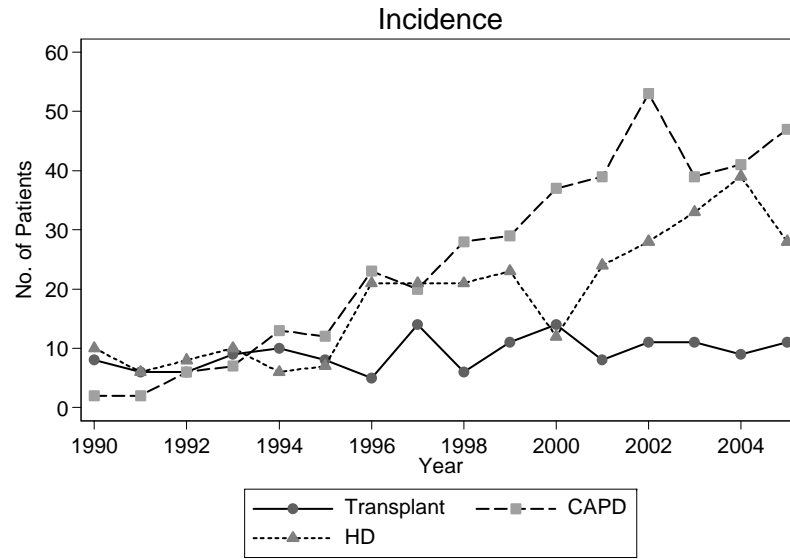
Year	1990	1991	1992	1993	1994	1995	1996	1997	1998	1999
New HD patients	10	6	8	10	6	7	21	21	21	23
New CAPD patients	2	2	6	7	13	12	23	20	28	29
New Transplants	8	6	6	9	10	8	5	14	6	11
HD deaths	0	2	1	2	0	2	0	3	3	2
CAPD deaths	0	2	0	0	0	2	2	3	7	2
Transplant deaths	1	0	0	0	1	0	2	0	0	0
On HD at 31st Dec	26	26	29	32	34	38	56	70	90	106
On CAPD at 31st Dec	5	5	8	14	26	32	51	62	73	91
Functioning transplant at 31st December	38	40	45	53	61	66	62	71	74	83

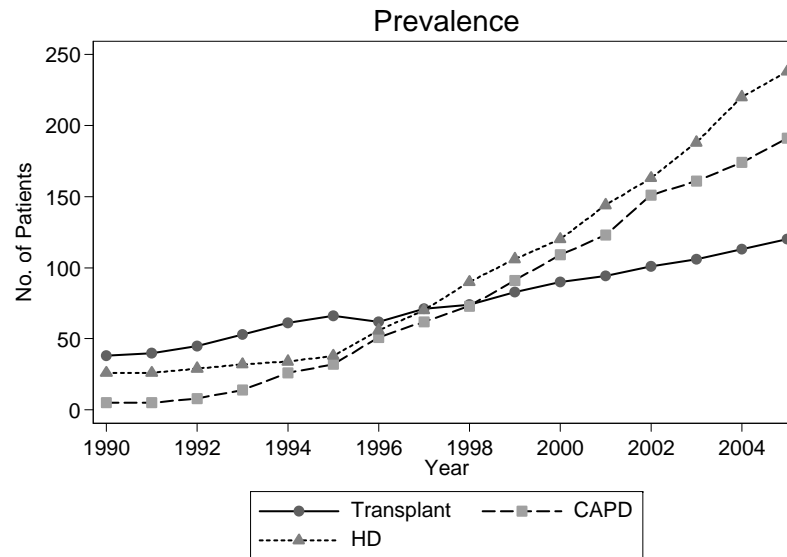
Year	2000	2001	2002	2003	2004	2005
New HD patients	12	24	28	33	39	28
New CAPD patients	37	39	53	39	41	47
New Transplants	14	8	11	11	9	11
HD deaths	4	1	10	6	10	7
CAPD deaths	3	8	8	9	5	9
Transplant deaths	1	0	1	1	0	1
On HD at 31st Dec	120	144	163	188	220	238
On CAPD at 31st Dec	109	123	151	161	174	191
Functioning transplant at 31st December	90	94	101	106	113	120

Dec. = December

**Figure 5.01(a): Incident cases of RRT by modality in children under 20 years old, 1990-2005**



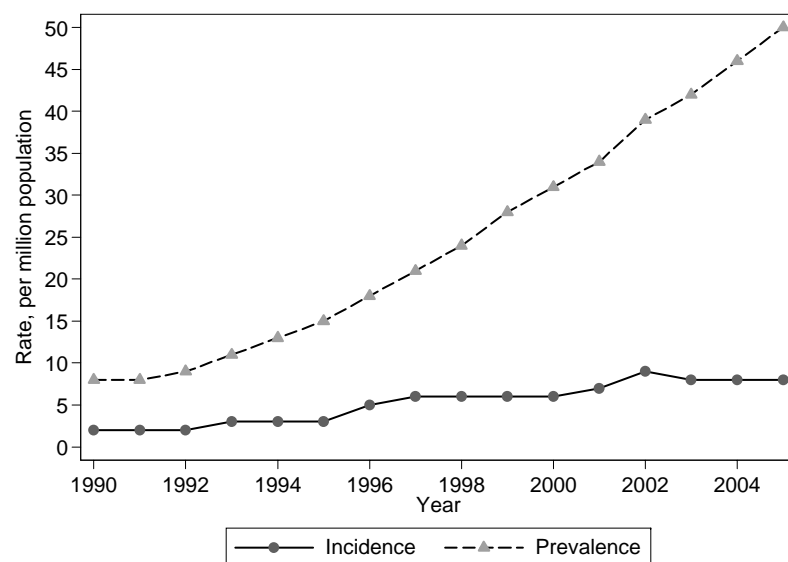
**Figure 5.01 (b): Prevalent cases of RRT by modality in children under 20 years old, 1990-2005**



**Table 5.02: Paediatric Dialysis and Transplant Treatment Rates per million age-group population 1990-2005**

Year	1990	1991	1992	1993	1994	1995	1996	1997	1998	1999	2000	2001	2002	2003	2004	2005
Incidence Rate																
New HD	1	1	1	1	1	1	2	2	2	2	1	2	3	3	4	3
New CAPD	0	0	1	1	1	1	2	2	3	3	4	4	5	4	4	4
New Transplant	1	1	1	1	1	1	1	1	1	1	1	1	1	1	1	1
All RRT	2	2	2	3	3	3	5	6	6	6	6	7	9	8	8	8
Prevalence Rate																
On HD	3	3	3	4	4	4	6	7	9	11	12	14	15	17	20	22
On CAPD	1	1	1	2	3	3	5	6	7	9	11	12	14	15	16	17
Functioning Graft	4	5	5	6	7	7	7	7	8	8	9	9	9	10	10	11
All RRT	8	8	9	11	13	15	18	21	24	28	31	34	39	42	46	50

**Figure 5.02: RRT Incidence and prevalence rate per million age related population, 1990-2005**



**Table 5.03a: Dialysis Treatment Rate by State, per million state age group population, 1990-2005**

State	1990-1994	1995-1999	2000-2005
Negeri Sembilan	2	9	15
Negeri Melaka	2	5	15
Pulau Pinang	4	4	13
Johor Darul Takzim	0	5	12
Kedah & Perlis	2	5	11
Terengganu Darul Iman	0	3	11
Selangor & W. Persekutuan	3	8	10
Perak Darul Redzuan	1	3	8
Kelantan Darul Naim	0	1	8
Pahang Darul Makmur	1	5	8
Sarawak	2	5	7
Sabah	1	1	4

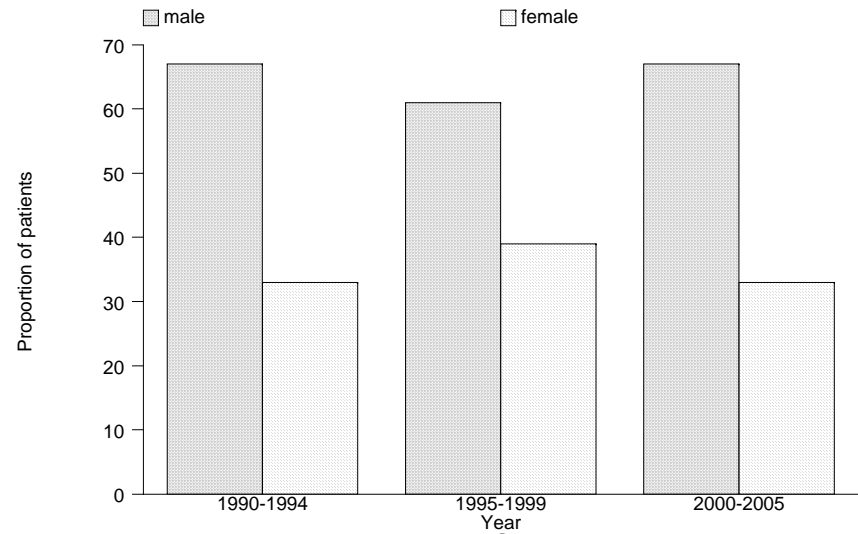
**Table 5.03b: Dialysis Treatment by State in absolute number; 1990-2005**

State	1990-1994	1995-1999	2000-2005
Selangor & W. Persekutuan	25	71	109
Johor Darul Takzim	2	26	74
Kedah & Perlis	6	21	49
Perak Darul Redzuan	6	12	39
Sarawak	9	21	35
Pulau Pinang	10	9	34
Kelantan Darul Naim	1	3	32
Negeri Sembilan	4	17	29
Sabah	7	9	29
Terengganu Darul Iman	1	8	27
Pahang Darul Makmur	3	15	25
Negeri Melaka	3	7	22

**Figure 5.04: Number of New Dialysis and Transplant Patients by gender 1990-2005**



**New Dialysis Patients by Gender, 1990-2005**



**New Transplant Patients by Gender, 1990-2005**

Figure 5.05: Dialysis and Transplant Treatment Rate by Age group 1990-2005

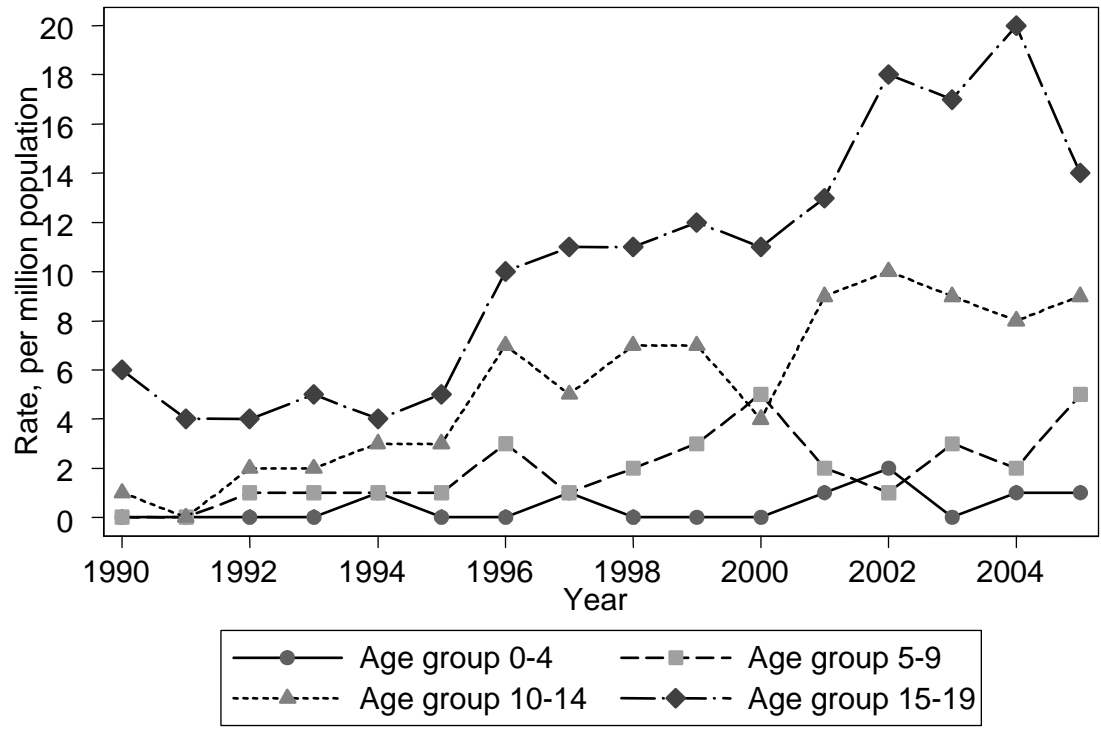


Figure 5.06: New Dialysis by treatment modality 1990-2005

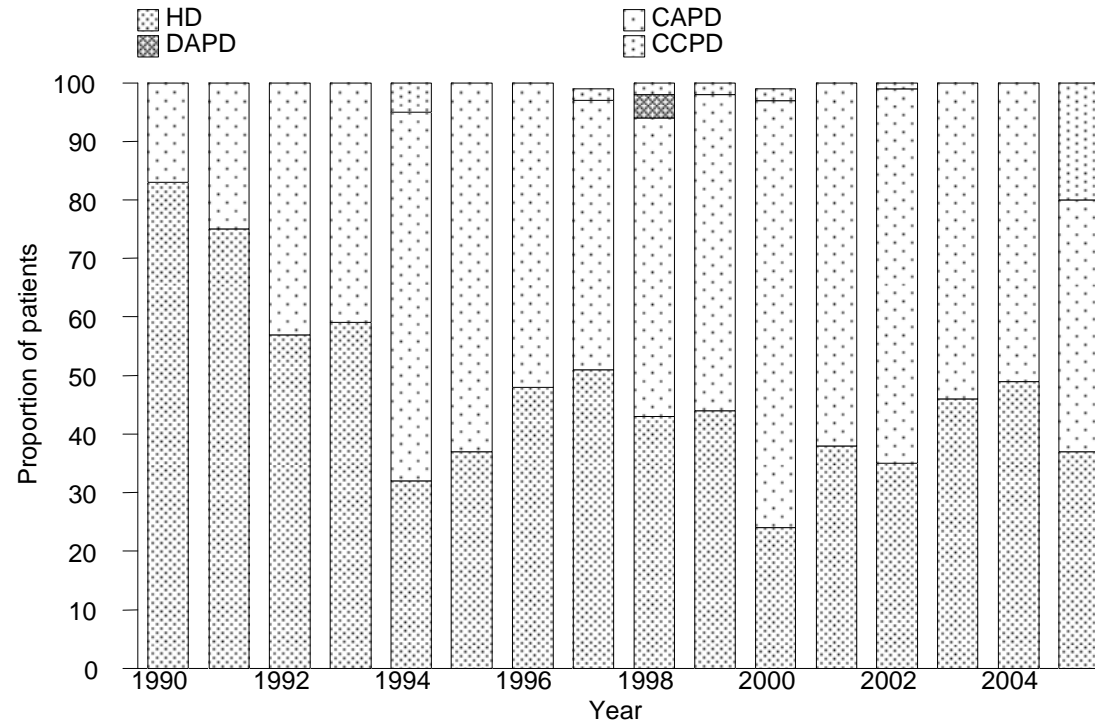
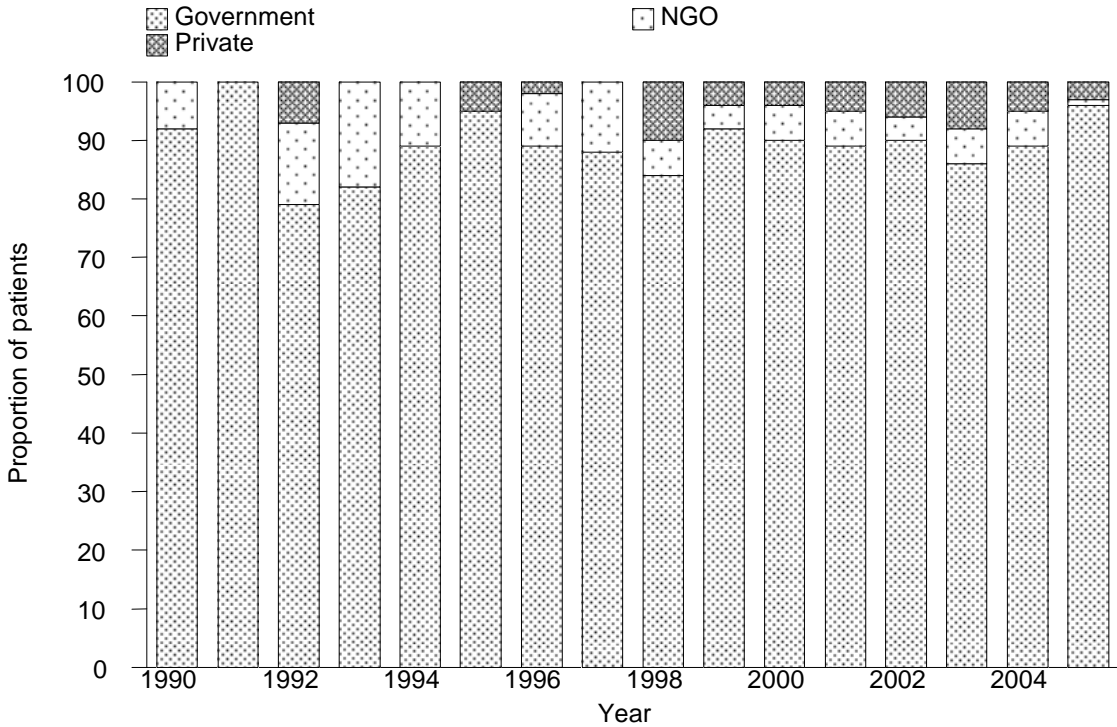




Figure 5.07: New Dialysis by sector 1990-2005



**Table 5.08: Primary Renal Disease 1990-2005**

Primary Renal Disease	Male		Female		Total	
	N	%	N	%	N	%
Glomerulonephritis	158	28	105	27	263	28
Focal Segmental Glomerulosclerosis	71	13	31	8	102	11
Reflux nephropathy	45	8	20	5	65	7
SLE	18	3	51	13	69	7
Obstructive uropathy	40	7	8	2	48	5
Renal dysplasia	17	3	12	3	29	3
Others	12	2	6	2	18	2
Hereditary nephritis	15	3	5	1	20	2
Cystic kidney disease	5	1	4	1	9	1
Drug induced nephropathy	0	0	4	1	4	0
Metabolic	1	0	0	0	1	0
Unknown	178	32	141	36	319	34
Total	560	100	387	100	947	100

**Table 5.09: Types of Renal Transplant 1990-2005**

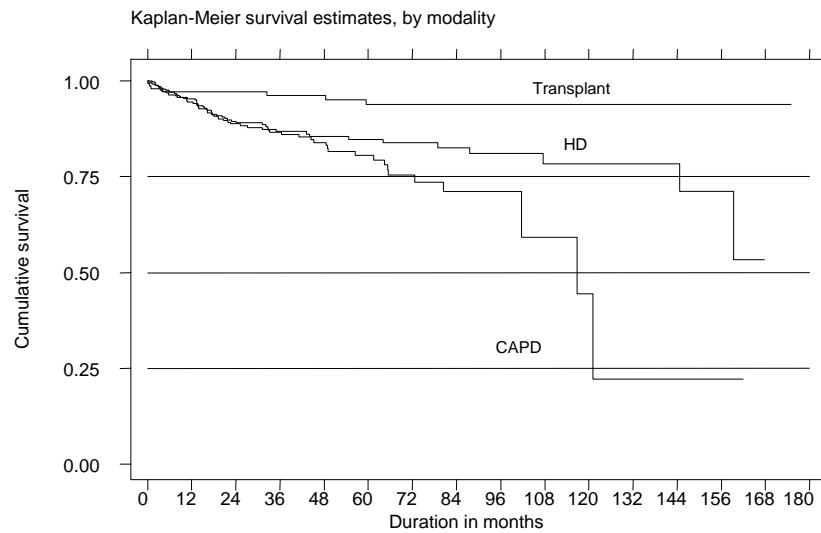
Year	1990-1994		1995-1999		2000-2005	
	No.	%	No.	%	No.	%
Commercial Cadaver	1	3	9	20	13	20
Commercial Living donor	9	23	2	5	4	6
Living related donor	29	74	31	70	30	47
Cadaver	0	0	2	5	17	27
Living emotionally related	0	0	0	0	0	0
TOTAL	39	100	44	100	64	100

**Table 5.10: Patient Survival by Modality of RRT, 1990-2005**

Modality	Transplant			CAPD			HD		
	No.	% survival	SE	No.	% survival	SE	No.	% survival	SE
1	124	97	1	321	95	1	284	94	1
5	76	94	2	71	81	3	100	85	2
10	32	94	2	4	44	15	18	78	4
12	19	94	2	2	22	18	12	78	4
14	5	94	2	-	-	-	2	53	16

\* No. = Number at risk SE = Standard Error

**Figure 5.10: Patient Survival by Modality of RRT, 1990-2005**

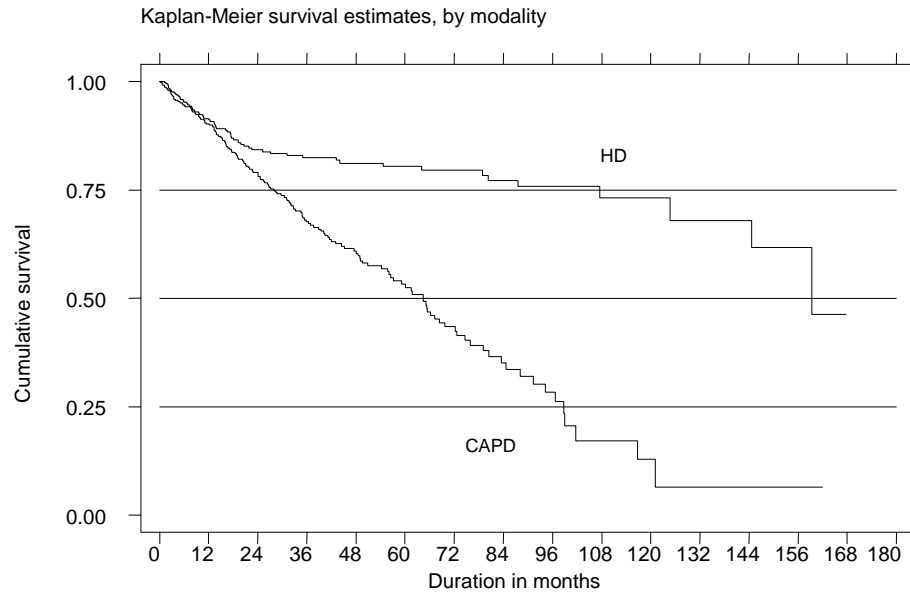


**Table 5.11: Dialysis Technique Survival by Modality, 1990-2005**

Modality Interval (years)	CAPD			HD		
	No.	% survival	SE	No.	% survival	SE
1	321	90	2	284	91	2
5	71	53	3	100	80	2
10	4	13	5	18	73	4
12	2	6	5	12	68	6
14	-	-	-	2	46	15

\* No. = Number at risk SE = Standard Error

**Figure 5.11: Dialysis Technique Survival by Modality, 1990-2005**



**Table 5.12: Transplant Graft Survival 1990-2005**

Interval (years)	No.	% survival	SE
1	124	90	2
5	76	79	4
10	32	67	5
12	19	64	6
14	5	45	10

\* No. = Number at risk SE = Standard Error

**Figure 5.12: Transplant Graft Survival 1990-2005**

