

Table 10.1: Prevalence of positive HBsAg and positive Anti-HCV at annual survey, HD patients 1997-2005

Year	No. of subjects	Prevalence of HBsAg+ (%)	Prevalence of Anti-HCV+ (%)
1997	1694	6	23
1998	2139	6	22
1999	2991	6	23
2000	4386	6	25
2001	5187	6	23
2002	6106	5	20
2003	6999	5	19
2004	7618	5	17
2005	8757	4	14

Table 10.2: Prevalence of positive HBsAg and positive Anti-HCV at annual survey, CAPD patients 1997-2005

Year	No. of subjects	Prevalence of HBsAg+ (%)	Prevalence of Anti-HCV+ (%)
1997	476	3	5
1998	541	3	6
1999	610	2	5
2000	662	2	5
2001	781	2	3
2002	891	3	4
2003	1229	3	4
2004	1201	4	5
2005	1317	4	5

Table 10.3: Variation in Proportion of patients with positive HBsAg at annual survey among HD centres, 2005

Year	No. of centres	Min	5th Centile	LQ	Median	UQ	95th Centile	Max
1997	46	0	0	1	5	9	17	19
1998	51	0	0	0	5	9	18	23
1999	76	0	0	0	4.5	9.5	19	30
2000	110	0	0	0	4	9	15	80
2001	125	0	0	0	5	9	14	90
2002	153	0	0	0	3	8	13	21
2003	173	0	0	0	3	7	15	64
2004	192	0	0	0	3	7	14	100
2005	223	0	0	0	1	6	14	100

Figure 10.3: Variation in Proportion of patients with positive HBsAg among HD centres, 2005

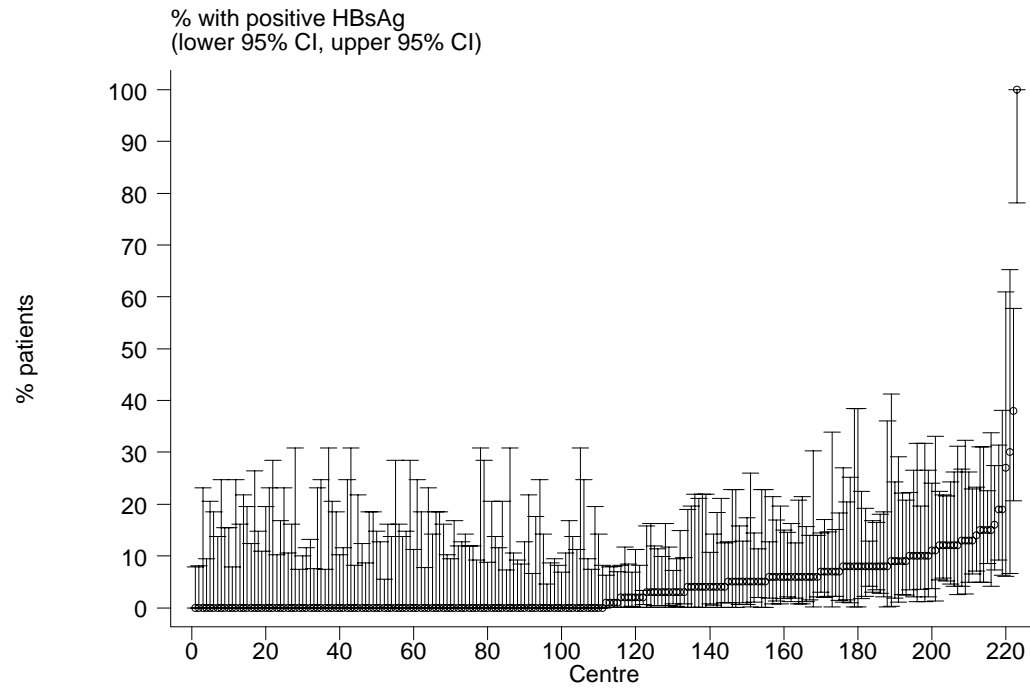


Table 10.4: Variation in Proportion of patients with positive HBsAg at annual survey among CAPD centres, 2005

Year	No. of centres	Min	5th Centile	LQ	Median	UQ	95th Centile	Max
1997	7	0	0	0	2	3	8	8
1998	9	0	0	0	1	3	6	6
1999	10	0	0	0	2	2	4	4
2000	11	0	0	0	1	5	5	5
2001	12	0	0	0	2	3	9	9
2002	14	0	0	1	3	5	14	14
2003	18	0	0	2	3.5	6	8	8
2004	18	0	0	1	3	6	11	11
2005	18	0	0	2	3.5	5	9	9

Figure 10.4: Variation in Proportion of patients with positive HBsAg among CAPD centres, 2005

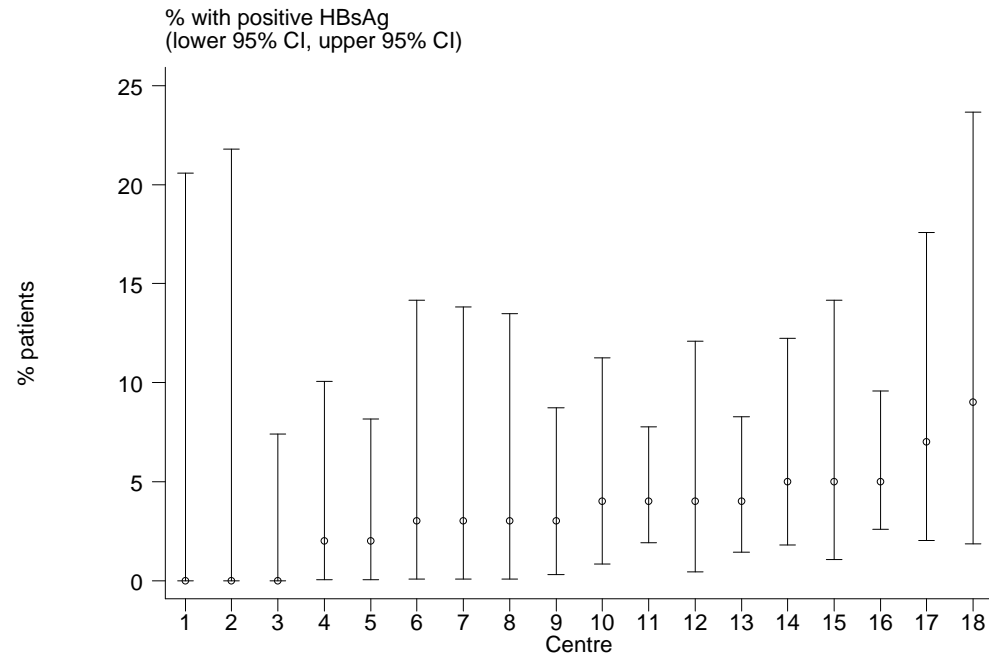


Table 10.5: Variation in Proportion of patients with positive anti-HCV at annual survey among HD centres, 2005

Year	No. of centres	Min	5th Centile	LQ	Median	UQ	95th Centile	Max
1997	46	0	0	13	21	29	56	64
1998	51	0	0	9	20	30	61	79
1999	76	0	0	6.5	18.5	30	58	81
2000	110	0	0	8	19	30	70	94
2001	125	0	0	7	18	30	64	92
2002	153	0	0	5	14	24	53	100
2003	173	0	0	5	13	24	49	98
2004	194	0	0	4	10.5	25	50	100
2005	223	0	0	2	9	19	40	100

Figure 10.5: Variation in Proportion of patients with positive anti-HCV among HD centres, 2005

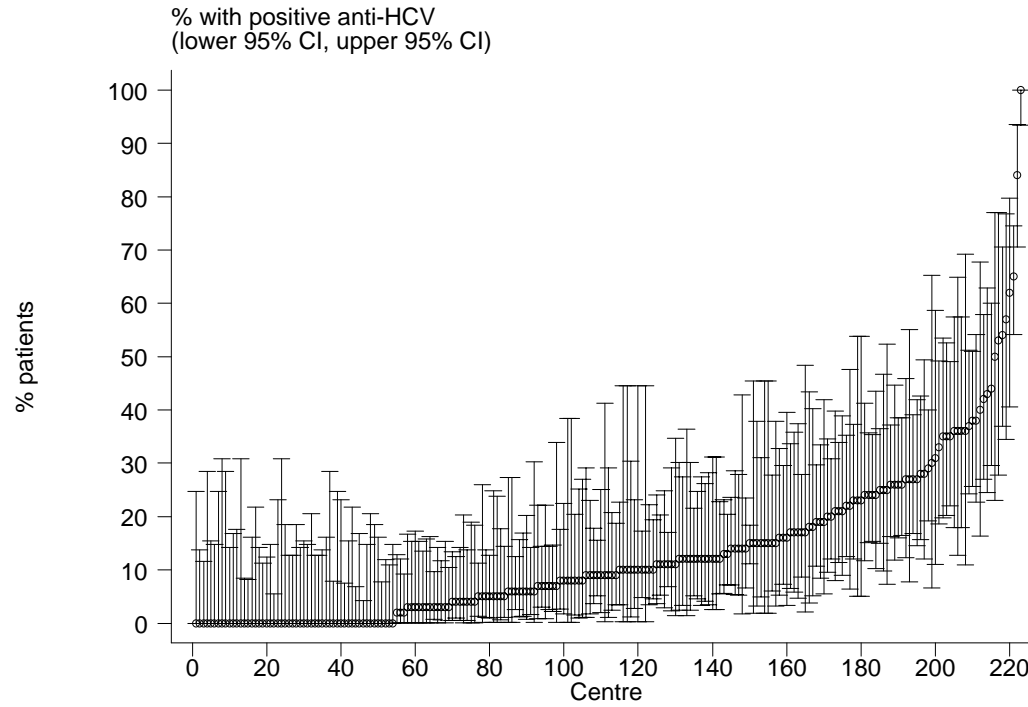


Table 10.6: Variation in Proportion of patients with positive anti-HCV at annual survey among CAPD centres, 2005

Year	No. of centres	Min	5th Centile	LQ	Median	UQ	95th Centile	Max
1997	7	0	0	0	6	7	9	9
1998	9	0	0	3	3	8	11	11
1999	10	0	0	3	4	7	14	14
2000	11	0	0	0	3	8	10	10
2001	12	0	0	0	3	4	6	6
2002	14	0	0	2	3	7	11	11
2003	18	0	0	1	3	7	9	9
2004	18	0	0	0	4	7	10	10
2005	18	0	0	3	4	8	13	13

Figure 10.6: Variation in Proportion of patients with positive anti-HCV among CAPD centres, 2005

