

CHAPTER 1

All Renal Replacement Therapy In Malaysia

Lim Yam Ngo
Lim Teck Onn

1.1 Stock and Flow

The intake of new dialysis patients continued to increase linearly over the years - from 1136 in 1997 to at least 3152 in 2006. The number of prevalent dialysis patients also increased linearly from 3698 in 1996 to almost 15000 at year end 2006.

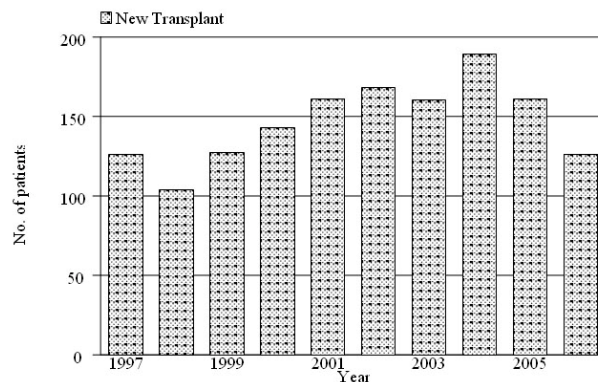
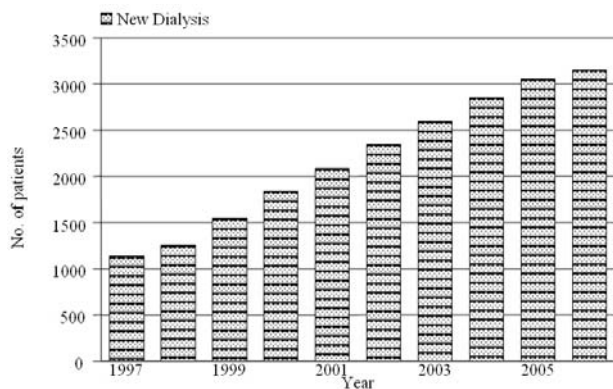
The number of new transplant had been increasing since the late 1990s, but with increasing proscription against commercial transplant, is beginning to show a downward trend from the year 2004. Patients with functioning renal transplants showed a moderate increase - from 1083 to 1725 over the same period. (table and figure 1.01)

Table 1.01: Stock and Flow of RRT, Malaysia 1997 – 2006

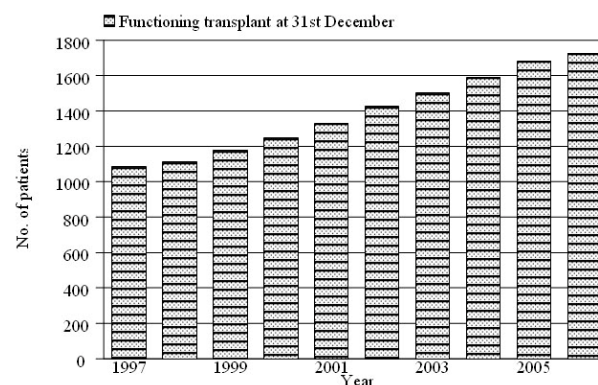
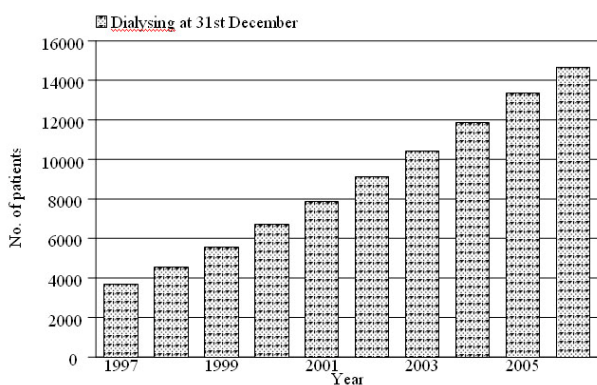
Year	1997	1998	1999	2000	2001	2002	2003	2004	2005	2006
New Dialysis patients	1136	1252	1544	1840	2085	2348	2597	2858	3054	3152
New Transplants	126	104	127	143	161	168	160	189	161	126
Dialysis deaths	316	376	492	594	816	925	1153	1265	1403	1575
Transplant deaths	31	26	25	30	37	32	37	41	41	49
Dialysing at 31st December	3698	4539	5538	6691	7839	9114	10429	11855	13337	14647
Functioning transplant at 31st December	1083	1111	1176	1248	1330	1425	1502	1590	1683	1725

Figure 1.01: Stock and Flow of RRT, Malaysia 1997 – 2006

(a) New Dialysis and Transplant patients



(b) Patients Dialysing and with Functioning Transplant at 31st December 1997 – 2006



1.2 Treatment Provision Rate

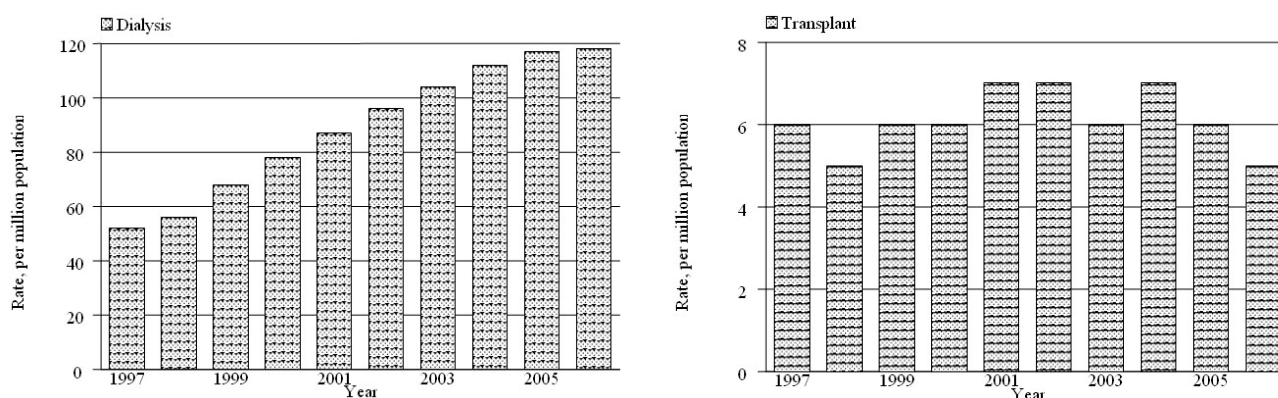
Dialysis acceptance rates doubled from 52 in 1997 to 104 in 2003. Since then, the dialysis acceptance rate has exceeded 110 per million population and was 117 in 2005 and at least 118 in 2006. (Data for 2006 are preliminary since at the time preparation of this report there were still many new cases yet to be notified to registry.)

New transplant rates remained low over the years fluctuating between 5-7 per million population per year. (table and figure 1.02)

Table 1.02: New Dialysis Acceptance Rate and New Transplant Rate per million population 1997 – 2006

Acceptance rate	1997	1998	1999	2000	2001	2002	2003	2004	2005	2006
New Dialysis	52	56	68	78	87	96	104	112	117	118
New Transplant	6	5	6	6	7	7	6	7	6	5

Figure 1.02: New Dialysis Acceptance and New Transplant Rate 1997 - 2006



Dialysis prevalence rate increased linearly over the last 10 years, from 171 per million population in 1997 to 510 in 2005 and at least 550 in 2006. The transplant prevalence rate however only showed a slight increase from 50 to 65 per million in 2006. (table and figure 1.03)

Table 1.03: RRT Prevalence Rate per million population 1997 – 2006

Prevalence rate	1997	1998	1999	2000	2001	2002	2003	2004	2005	2006
Dialysis	171	205	244	285	326	372	416	463	510	550
Transplant	50	50	52	53	55	58	60	62	64	65

Figure 1.03: Dialysis and Transplant Prevalence Rate per million population 1997 - 2006

