

CHAPTER 4

Quality of Life & Rehabilitation Outcomes

Liu Wen Jiun
Chew Thian Fook
Alinda Chiu Sze Fung
Zaki Morad B Mohd Zaher

SECTION A : QoL index score

16476 patients who entered dialysis between 1997-2006 were analysed. 13872 HD patients and 2604 CAPD patients reported median QoL index score of 9 and 10 respectively (Table 4.1, Figure 4.1) Diabetics have a lower median QoL index score (8 versus 10) than non diabetics (Table 4.2, Figure 4. 2) whilst there was no difference seen between gender (Table 4.3, Figure 4.3). There is a trend of lower median QoL index score being associated with older dialysis patients (Table 4.4, Figure 4.4). There are no obvious trends in QoL index seen either in the HD or CAPD cohort over the last 10 years. (Table 4.5, Table 4.6, Fig 4.5 and Figure 4.6)

Table 4.1: Cumulative distribution of QoL-Index score in relation to Dialysis modality, All Dialysis patients 1997-2006

Dialysis modality	CAPD	HD
Number of patients	2604	13872
Centile		
0	0	0
0.05	5	4
0.10	6	5
0.25 (LQ)	8	7
0.5 (median)	10	9
0.75 (UQ)	10	10
0.90	10	10
0.95	10	10
1	10	10

Figure 4.1: Cumulative distribution of QoL-Index score in relation to Dialysis modality, All Dialysis patients 1997-2006

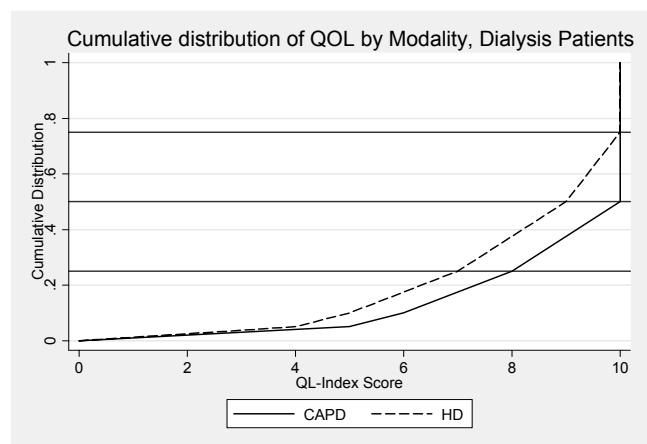


Table 4.2: Cumulative distribution of QoL-Index score in relation to Diabetes mellitus, All Dialysis patients 1997-2006

Diabetes mellitus	No	Yes
Number of patients	8764	7712
Centile		
0	0	0
0.05	6	4
0.10	7	5
0.25 (LQ)	9	6
0.5 (median)	10	8
0.75 (UQ)	10	10
0.90	10	10
0.95	10	10
1	10	10

Figure 4.2: Cumulative distribution of QoL-Index score in relation to Diabetes mellitus, All Dialysis patients 1997-2006

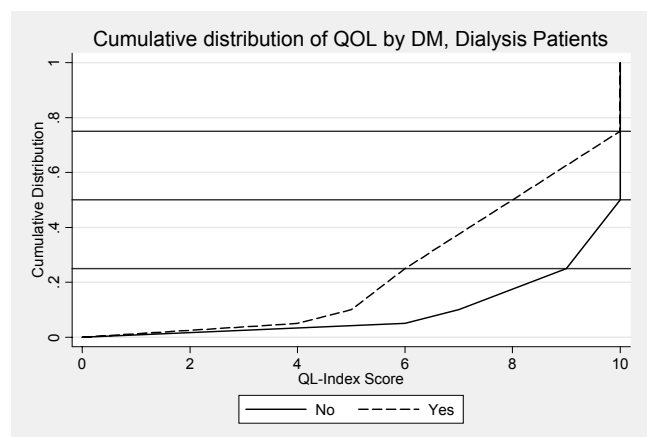


Table 4.3: Cumulative distribution of QoL-Index score in relation to Gender, All Dialysis patients 1997-2006

Gender	Male	Female
Number of patients	9128	7348
Centile		
0	0	0
0.05	5	4
0.10	6	5
0.25 (LQ)	8	7
0.5 (median)	9	9
0.75 (UQ)	10	10
0.90	10	10
0.95	10	10
1	10	10

Figure 4.3: Cumulative distribution of QoL-Index score in relation to Gender, All Dialysis patients 1997-2006

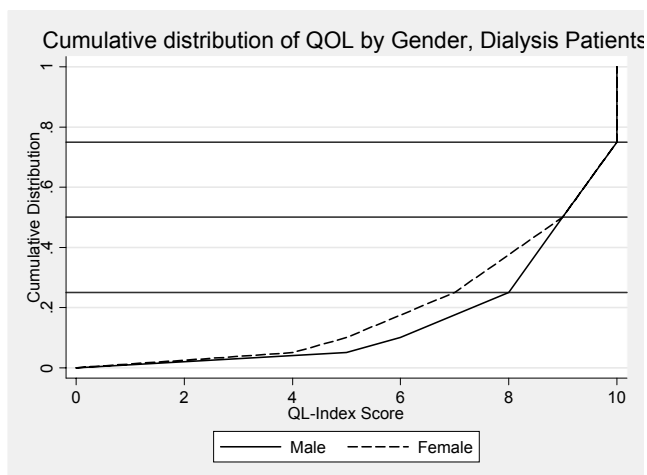


Table 4.4: Cumulative distribution of QoL-Index score in relation to Age, All Dialysis patients 1997-2006

Age group (years)	<20	20-39	40-59	>=60
Number of patients	672	2918	7960	4926
Centile				
0	0	0	0	0
0.05	6	7	5	4
0.10	7	8	6	5
0.25 (LQ)	9	9	8	6
0.5 (median)	10	10	9	8
0.75 (UQ)	10	10	10	9
0.90	10	10	10	10
0.95	10	10	10	10
1	10	10	10	10

Figure 4.4: Cumulative distribution of QoL-Index score in relation to Age, All Dialysis patients 1997-2006

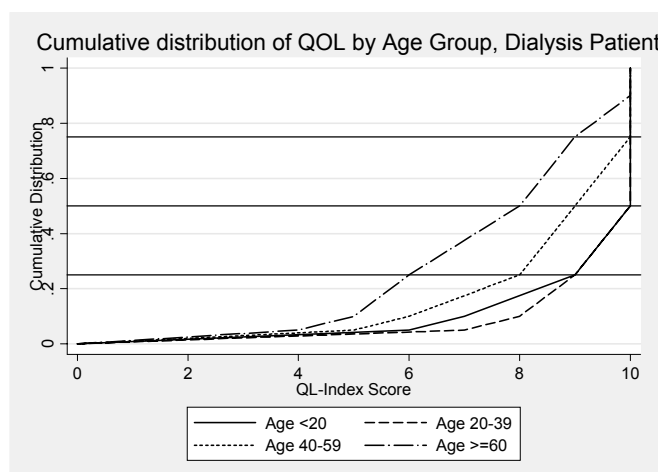


Table 4.5: Cumulative distribution of QoL-Index score in relation to Year of entry, HD patients 1997-2006

Year of Entry	1997	1998	1999	2000	2001	2002	2003	2004	2005	2006
	730	826	1027	1248	1407	1600	1626	1895	1883	1630
Centile										
0	0	0	0	0	0	0	0	0	0	0
0.05	5	5	5	5	5	4	5	4	4	4
0.10	6	6	6	6	5	5	5	5	5	5
0.25 (LQ)	8	8	7	7	7	7	7	7	7	7
0.5 (median)	9	9	9	9	9	9	9	9	9	9
0.75 (UQ)	10	10	10	10	10	10	10	10	10	10
0.90	10	10	10	10	10	10	10	10	10	10
0.95	10	10	10	10	10	10	10	10	10	10
1	10	10	10	10	10	10	10	10	10	10

Figure 4.5: Cumulative distribution of QoL-Index score in relation to Year of entry, HD patients 1997-2006

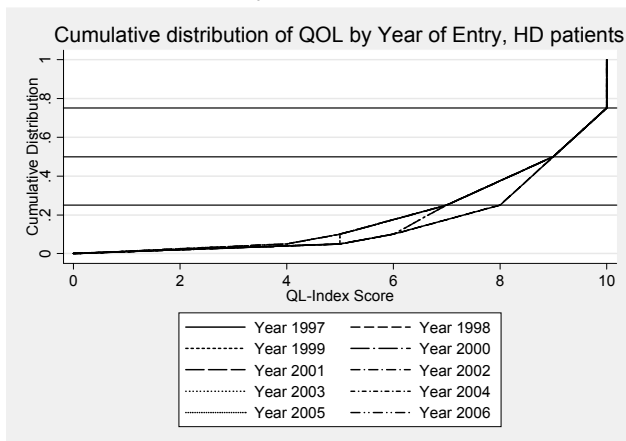


Figure 4.6: Cumulative distribution of QoL-Index score in relation to Year of entry, CAPD patients 1997-2006

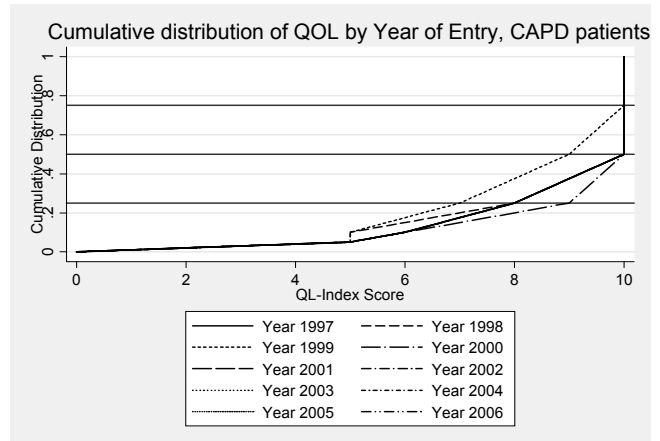


Table 4.6: Cumulative distribution of QoL-Index score in relation to Year of entry, CAPD patients 1997-2006

Year of Entry	1997	1998	1999	2000	2001	2002	2003	2004	2005	2006
Number of patient	162	117	167	188	269	319	369	306	316	391
Centile										
0	0	0	0	0	0	0	0	0	0	0
0.05	5	5	5	5	5	5	5	5	5	5
0.10	6	5	5	6	6	6	6	6	6	6
0.25 (LQ)	8	8	7	9	8	8	8	8	8	8
0.5 (median)	10	10	9	10	10	10	10	10	10	10
0.75 (UQ)	10	10	10	10	10	10	10	10	10	10
0.90	10	10	10	10	10	10	10	10	10	10
0.95	10	10	10	10	10	10	10	10	10	10
1	10	10	10	10	10	10	10	10	10	10

SECTION B :WORK RELATED REHABILITATION

Analysis was done on HD patients (n=5680) and CAPD patients (n=861) who entered dialysis between 1997 –2006, (Table 4.7). Only patients who are working for pay and those who are unable to work for pay due to health reasons are included. The proportion of patients on employment are similar in both modalities (HD = 72% vs CAPD 72%)

Amongst HD as well as CAPD patients, the proportion on employment increases with longer duration on dialysis. (Table 4.8 and Table 4.9) This may be confounded by the healthier individuals who survived longer in the earlier cohort and therefore spuriously increased the proportion on employment

Table 4.7: Work related rehabilitation in relation to Modality, Dialysis patients 1997-2006

Modality	CAPD		HD	
	N	%	N	%
Number of patients	861		5680	
Able to return for Full or Part time for pay	623	72	4077	72
Unable to work for pay*	238	28	1603	28

* Exclude patients unable to find employment for non-health related reasons

Table 4.8: Work related rehabilitation in relation to Year of Entry, HD patients 1997-2006

Year	1997	1998	1999	2000	2001	2002	2003	2004	2005	2006	
Number of patients	373	421	520	571	574	648	658	708	650	557	
Able to return for Full or Part time for pay	No.	310	337	395	443	414	477	461	469	438	333
	%	83	80	76	78	72	74	70	66	67	60
Unable to work for pay*	No	63	84	125	128	160	171	197	239	212	224
	%	17	20	24	22	28	26	30	34	33	40

* Exclude patients unable to find employment for non-health related reasons

Table 4.9: Work related rehabilitation in relation to Year of Entry, CAPD patients 1997-2006

Year	1997	1998	1999	2000	2001	2002	2003	2004	2005	2006	
Number of patients	69	39	47	62	82	116	136	94	109	107	
Able to return for Full or Part time for pay	No.	50	31	35	41	67	89	105	68	73	64
	%	72	79	74	66	82	77	77	72	67	60
Unable to work for pay*	No	19	8	78	21	15	27	31	26	36	43
	%	28	21	26	34	27	23	23	28	33	40

* Exclude patients unable to find employment for non-health related reasons