

## **CHAPTER 8**

# **Blood Pressure Control And Dyslipidaemia**

Prasad Menon  
Lee Wan Tin

**SECTION 8.1: BLOOD PRESSURE CONTROL ON DIALYSIS**

In 2006, the predialysis systolic blood pressure remains high and there appears a trend towards increasingly poor blood pressure control predialysis. The mean and median predialysis systolic blood pressure was 151.3 and 151 mmHg respectively.

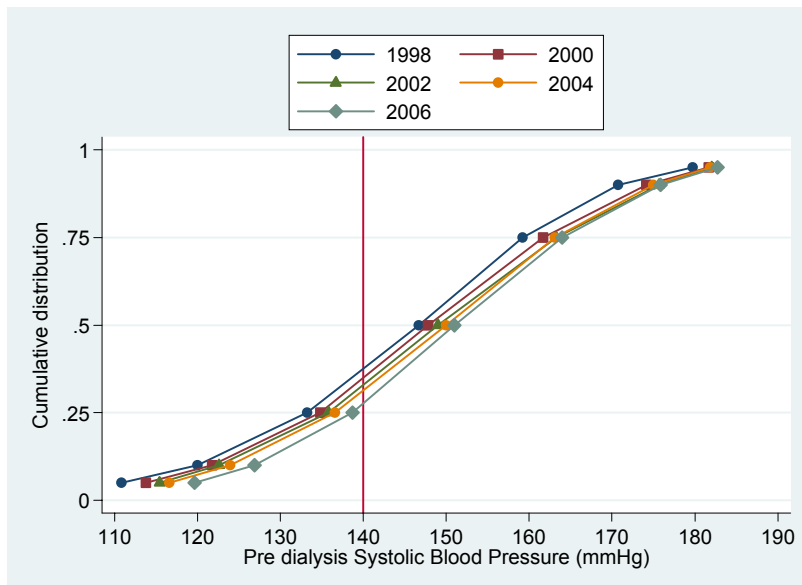
The trend towards an increase in uncontrolled predialysis systolic blood pressure continued in 2006 with the proportion of haemodialysis patients with predialysis systolic BP < 140 mmHg tending lower at 27% compared with 41% a decade ago in 1997. (Table 8.1.1)

This may be a reflection of the increasing numbers of elderly patients coming onto dialysis.

**Table 8.1.1:** Distribution of Pre dialysis Systolic Blood Pressure (mmHg), HD patients 1997-2006

Year	No. of subjects	Mean	SD	Median	LQ	UQ	% patients <120 mmHg	% patients 120-<140 mmHg	% patients 140-<160 mmHg	% patients 160-<180 mmHg	% patients ≥180 mmHg
1997	1659	144.5	20.8	144.2	130.8	158.1	11	30	35	19	4
1998	2108	146	20.5	146.7	133.2	159.2	10	27	39	19	5
1999	2965	148.7	20.8	148.5	135.3	162.2	8	25	38	23	6
2000	4310	148	20.6	147.8	134.8	161.7	9	25	38	23	6
2001	5147	148.8	20.9	148.8	134.9	162.6	8	25	37	23	7
2002	5911	149.2	20.6	149	135.8	163.3	8	24	38	24	6
2003	6834	149.7	20.2	149.8	136.4	162.9	7	24	39	23	7
2004	7937	149.7	20	150	136.6	163.1	7	23	39	25	6
2005	9221	149.9	19.4	149.6	137	162.8	6	24	40	24	6
2006	11346	151.3	19.3	151	138.7	164	5	22	41	25	7

**Figure 8.1.1:** Cumulative distribution of Pre dialysis Systolic Blood Pressure (mmHg), HD patients 1997-2006

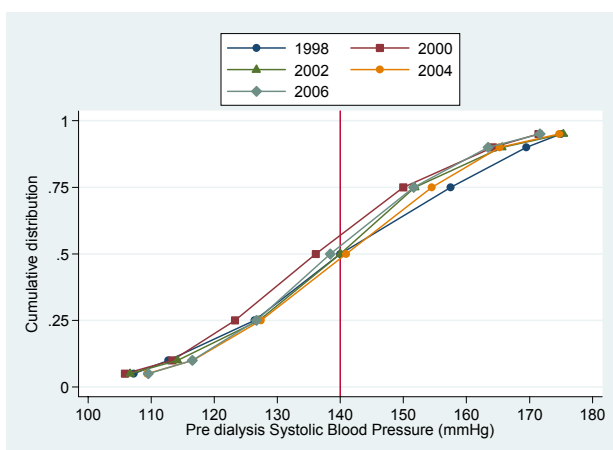


In contrast, predialysis systolic blood pressure was better controlled in CAPD patients in 2006, with 54% of CAPD patients having a predialysis systolic BP <140 mmHg (Table 8.1.2). This is better than 47% in 2004 and 51% in 2005.

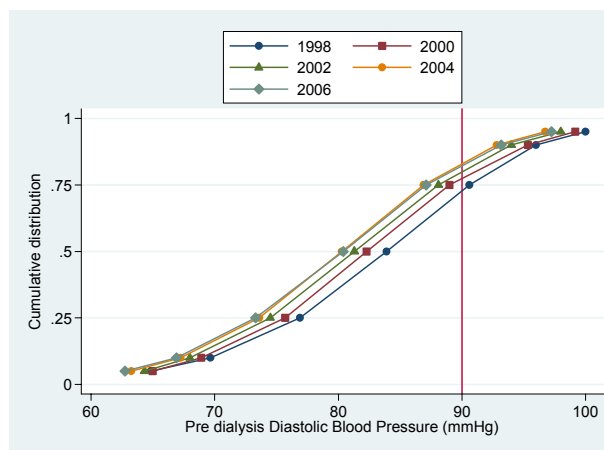
**Table 8.1.2:** Distribution of Pre dialysis Systolic Blood Pressure (mmHg), CAPD patients 1997-2006

Year	No. of subjects	Mean	SD	Median	LQ	UQ	% patients <120 mmHg	% patients 120-<140 mmHg	% patients 140-<160 mmHg	% patients 160-<180 mmHg	% patients ≥180 mmHg
1997	468	142.7	20.3	142.9	128.3	156.3	13	31	37	17	3
1998	519	141	21.2	140	126.4	157.5	16	34	29	18	3
1999	576	141	19.8	140	127.2	156	14	35	34	15	2
2000	638	137.2	20.4	136.1	123.3	150	18	39	29	13	2
2001	739	139	20.2	137.5	125.8	151.7	16	38	30	13	3
2002	843	139.8	20.5	140	127.1	151.8	14	36	34	12	4
2003	1154	140.5	20.1	140	126.7	154.1	15	35	32	15	3
2004	1259	141	19.8	140.9	127.4	154.5	13	34	36	14	3
2005	1351	140.4	20.2	139.3	127.3	153.2	13	38	32	14	3
2006	1522	139.4	19.3	138.4	126.7	151.6	14	40	32	11	2

**Figure 8.1.2:** Cumulative distribution of Pre dialysis Systolic Blood Pressure (mmHg), CAPD patients 1997-2006



**Figure 8.1.3:** Cumulative distribution of Pre dialysis Diastolic Blood Pressure, HD patients 1997-2005



In comparison with predialysis systolic blood pressure, the predialysis diastolic blood pressure remained well controlled in haemodialysis patients in 2006, with 83% of haemodialysis patients having predialysis diastolic BP < 90 mmHg (Table 8.1.3). This has been stable over the last few years.

**Table 8.1.3:** Distribution of Pre dialysis Diastolic Blood Pressure, HD patients 1997-2006

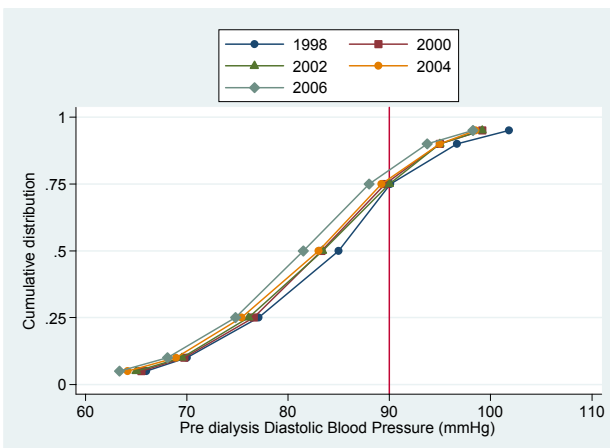
Year	No. of subjects	Mean	SD	Median	LQ	UQ	% patients <70 mmHg	% patients 70-<80 mmHg	% patients 80-<90 mmHg	% patients 90-<100 mmHg	% patients ≥100 mmHg
1997	1660	83.7	10.9	84.2	77	90.7	10	23	38	22	6
1998	2108	83.5	10.7	83.9	76.9	90.6	10	24	38	23	5
1999	2965	83.5	10.5	83.5	77.1	90	10	24	40	21	6
2000	4309	82.2	10.4	82.3	75.7	89	11	28	39	18	4
2001	5146	81.6	10.4	81.7	75	88.3	12	30	37	17	4
2002	5907	81.2	10.4	81.3	74.5	88.1	13	30	37	16	3
2003	6832	80.6	10.2	80.8	73.9	87.2	14	32	37	14	3
2004	7935	80.3	10.2	80.3	73.6	86.9	15	33	36	14	3
2005	9221	80.3	10.6	80.4	73.5	87	15	32	36	14	3
2006	11345	80.4	11	80.4	73.3	87.1	16	32	35	14	3

Similarly, predialysis diastolic blood pressure was also well controlled in CAPD in 2006 with mean and median predialysis diastolic blood pressure at 81.4 mmHg and 81.5 mmHg respectively. 97% of CAPD patients have predialysis diastolic BP < 90 mmHg (Table 8.1.4).

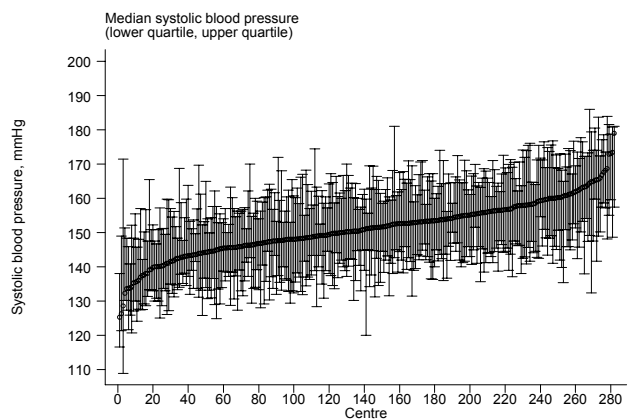
**Table 8.1.4:** Distribution of Pre dialysis Diastolic Blood Pressure (mmHg), CAPD patients 1997-2006

Year	No. of subjects	Mean	SD	Median	LQ	UQ	% patients <70 mmHg	% patients 70-<80 mmHg	% patients 80-<90 mmHg	% patients 90-<100 mmHg	% patients ≥100 mmHg
1997	467	85.3	10.6	85.8	79.8	91.4	6	19	41	26	8
1998	519	84.3	11.3	85	77.1	90.1	8	24	36	24	8
1999	576	84	10.9	84.2	77.9	90	9	20	44	20	7
2000	638	82.9	11	83.3	76.6	89.6	10	24	41	20	5
2001	739	83.1	10.9	82.7	76.4	89.6	9	29	38	18	6
2002	843	82.8	10.8	83.4	76.1	90	11	24	41	21	5
2003	1156	82.2	10.9	82.3	75.6	89.4	12	26	38	19	4
2004	1258	82.2	10.5	83	75.4	89.2	11	28	38	18	4
2005	1351	81.6	10.9	82.2	75	88.3	12	29	40	15	5
2006	1521	81.4	10.6	81.5	74.8	88	13	28	40	15	3

**Figure 8.1.4:** Cumulative distribution of Pre dialysis Diastolic Blood Pressure (mmHg), CAPD patients 1997-2006



**Figure 8.1.5(a):** Variation in median systolic blood pressure (mmHg) among HD patients, HD centres 2006



The mild variation in median systolic blood pressure among haemodialysis centers was similar to previous year (Table 8.1.5 (a)).

**Table 8.1.5:** Variation in BP control among HD centres 2006

a) Median Systolic blood pressure (mmHg) among HD patients

Year	No. of centres	Min	5th Centile	LQ	Median	UQ	95th Centile	Max
1997	44	119.3	133.6	140.2	145.2	152.6	158	163.7
1998	48	131.8	135	141	146.3	150.9	158.7	159.2
1999	75	134.2	137.3	142.2	148.6	154.2	163.6	167.3
2000	107	130.6	136.6	142.7	147.6	155.6	163.2	180
2001	124	127.5	135.7	143	148.6	154.7	161.9	173.4
2002	152	125	137.1	143.5	149.2	154.6	163.4	170.9
2003	174	126.3	135.8	144.8	150.1	155.5	161.6	173.7
2004	204	120	138.1	145	150	155.2	162.5	171
2005	235	127.5	137	143.8	150.5	155.5	161	169.1
2006	281	125.3	137.5	146	151.1	156.3	163.9	179

The mild variation in median diastolic blood pressure among haemodialysis centers was also similar to previous years (Table 8.1.5 (b)).

Table 8.1.5(b) Median Diastolic blood pressure (mmHg) among HD patients

Year	No. of centres	Min	5th Centile	LQ	Median	UQ	95th Centile	Max
1997	44	76.4	80	82	84.2	85.6	88	93.9
1998	48	77.1	78.6	82	83.7	85.9	88.5	90
1999	75	70.9	77.3	81.7	83.7	86	89.4	91.8
2000	107	75.3	76.7	80	82.3	84.7	89.3	94.4
2001	124	73.9	76	79.8	81.9	84	87.5	91.3
2002	152	72.6	75.5	79.2	81.3	83.6	87.3	101.4
2003	174	72.4	74.9	78.5	80.9	83.5	86.7	97.5
2004	204	71.6	74	78.3	80.8	83	86.8	93.4
2005	235	67	73.1	78.1	80.8	82.8	87.1	91.8
2006	281	67	74.4	77.6	80.8	83	87.3	113.5

Figure 8.1.5(b): Variation in median diastolic blood pressure (mmHg) among HD patients, HD centres 2006

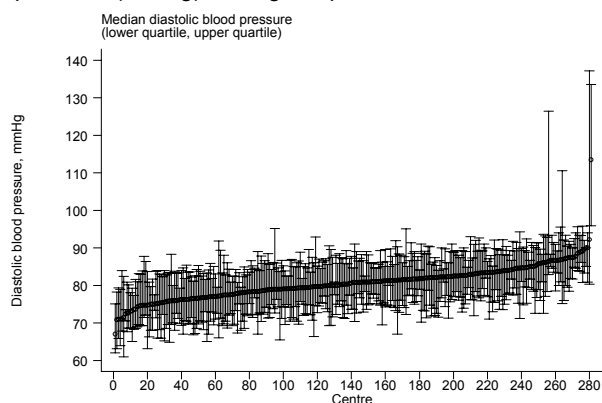
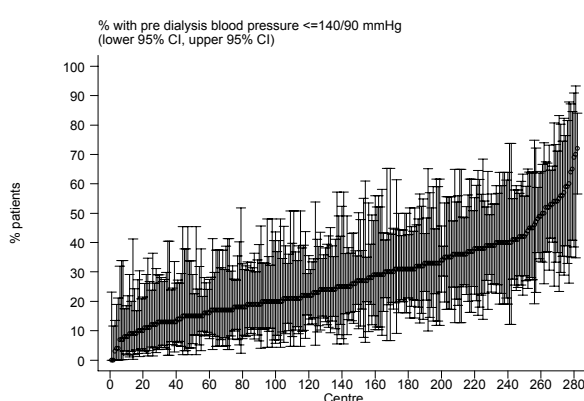


Figure 8.1.5(c): Variation in proportion of HD patients with pre dialysis blood pressure  $\leq 140/90$  mmHg, HD centres 2006



The variation in proportion of haemodialysis patients with predialysis BP  $< 140/90$  mmHg was also similar to previous years (Table 8.1.5 (c)).

Table 8.1.5(c) Proportion of HD patients with Pre dialysis Blood Pressure  $\leq 140/90$  mmHg

Year	No. of centres	Min	5th Centile	LQ	Median	UQ	95th Centile	Max
1997	44	15	17	28.5	37.5	44.5	64	87
1998	48	9	20	27	35	42	58	72
1999	75	4	11	23	32	41	56	67
2000	107	0	13	23	32	43	63	83
2001	124	0	11	21	31	43	60	70
2002	152	0	10	22	30	41	56	73
2003	174	4	11	21	29	38	58	80
2004	204	0	10	20	29	37	56	90
2005	235	4	10	20	27	40	57	88
2006	281	0	9	17	25	36	54	72

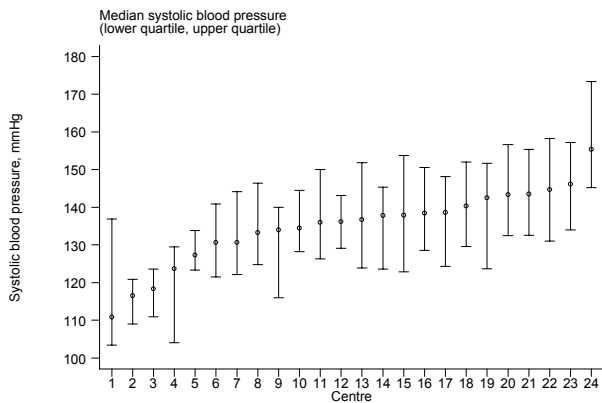
Similar to haemodialysis centers, the variation in median predialysis systolic blood pressure was mild and similar to previous years in CAPD centers (Table 8.1.6 (a))

**Table 8.1.6:** Variation in BP control among CAPD centres 2006

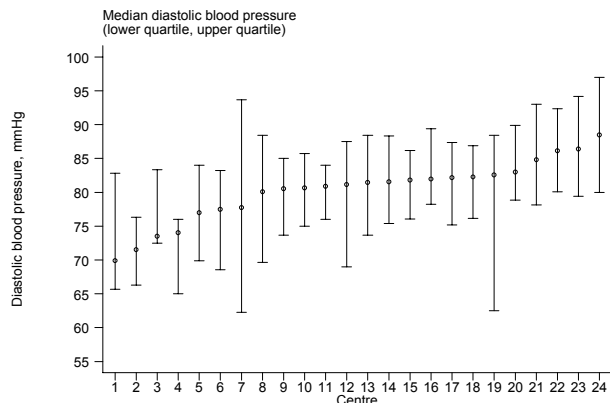
(a) Median Systolic blood pressure (mmHg) among CAPD patients

Year	No. of centres	Min	5th Centile	LQ	Median	UQ	95th Centile	Max
1997	7	124	124	139.4	142.5	150	151.6	151.6
1998	9	110.3	110.3	135	138.6	141.6	147.5	147.5
1999	9	116.7	116.7	132.5	137.8	140	152.8	152.8
2000	11	115.5	115.5	131.1	134.9	137.8	149.1	149.1
2001	11	119.6	119.6	130.7	137.5	138.8	149	149
2002	15	123.2	123.2	134.8	140	144.5	148.2	148.2
2003	19	120.7	120.7	131.8	140.8	146.6	151.8	151.8
2004	19	115.9	115.9	133.3	139.5	142.5	149.7	149.7
2005	21	109.9	116.9	134.2	136.6	138.1	147.5	158
2006	24	110.8	116.5	130.6	136.4	141.4	146.2	155.3

**Figure 8.1.6(a):** Variation in median systolic blood pressure (mmHg) among CAPD patients, CAPD centres 2006



**Figure 8.1.6(b):** Variation in median diastolic blood pressure (mmHg) among CAPD patients, CAPD centres 2006



The variation in median predialysis diastolic blood pressure was also mild and very similar to previous years (Table 8.1.6 (b)).

**Table 8.1.6(b)** Median Diastolic blood pressure (mmHg) among CAPD patients

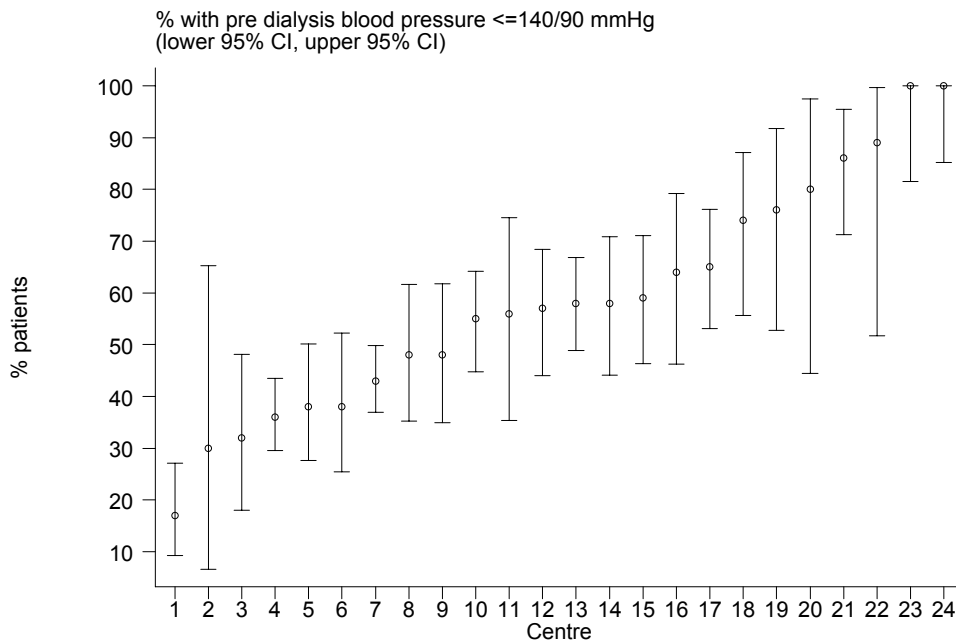
Year	No. of centres	Min	5th Centile	LQ	Median	UQ	95th Centile	Max
1997	7	82.5	82.5	85.3	86	86	88.7	88.7
1998	9	75	75	85.2	85.5	86	87	87
1999	9	77.5	77.5	82.3	84.5	85	86.7	86.7
2000	11	73.3	73.3	80	83	84.4	88	88
2001	11	79	79	80.9	83	84.7	88	88
2002	15	76.8	76.8	81.8	83.3	85.5	89.5	89.5
2003	19	73.6	73.6	81	82.9	84.4	88	88
2004	19	76	76	80.6	83.1	84.4	87.5	87.5
2005	21	64.8	75.5	80	82	83.8	86	86.3
2006	24	69.9	71.5	77.6	81.3	82.4	86.1	88.5

As in previous years, the proportion of CAPD patients with BP < 140/90 mmHg was high suggesting good BP control in CAPD patients. BP control in CAPD was much better than in haemodialysis patients (Table 8.1.6 (c)).

(c) Proportion of CAPD patients with Pre dialysis Blood Pressure  $\leq$ 140/90 mmHg

Year	No. of centres	Min	5th Centile	LQ	Median	UQ	95th Centile	Max
1997	7	26	26	35	41	46	59	59
1998	9	36	36	44	47	49	100	100
1999	9	30	30	41	52	60	100	100
2000	11	24	24	53	58	65	91	91
2001	11	36	36	46	52	65	84	84
2002	15	19	19	33	46	56	92	92
2003	19	28	28	38	46	66	91	91
2004	19	29	29	40	49	59	82	82
2005	21	23	29	45	55	67	94	100
2006	24	17	30	40.5	57.5	75	100	100

**Figure 8.1.6(c):** Variation in proportion of CAPD patients with pre dialysis blood pressure  $\leq$  140/90 mmHg, CAPD centres 2006



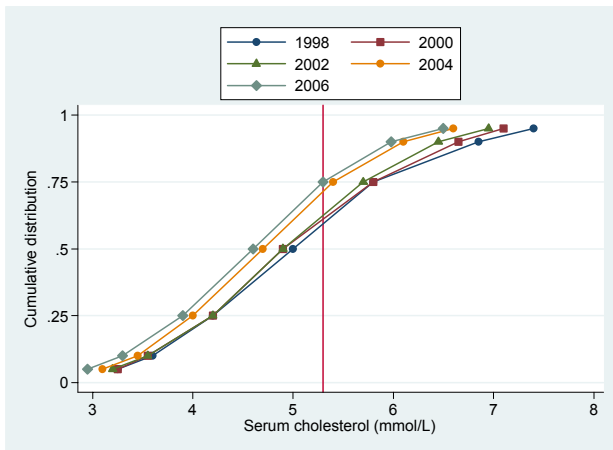
**SECTION 8.2: DYSLIPIDAEMIA IN DIALYSIS PATIENTS**

The previous year’s trend of improving total cholesterol levels in HD patients continued in 2006, with 76% of HD patients achieving total cholesterol < 5.3 mmol/l (Table 8.2.1).

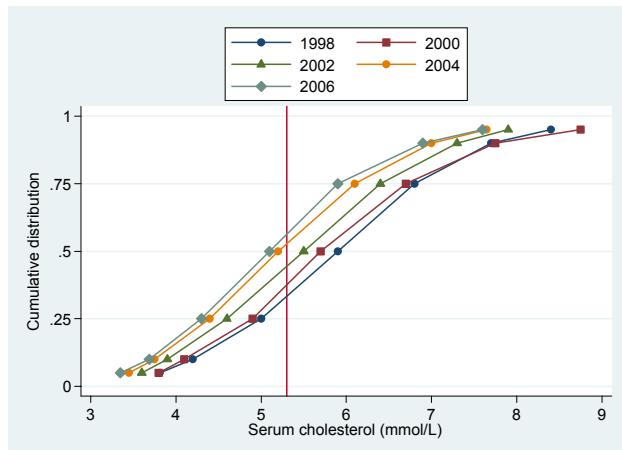
**Table 8.2.1:** Distribution of serum Cholesterol, HD patients 1997-2006

Year	No. of subjects	Mean	SD	Median	LQ	UQ	% patients <3.5 mmol/L	% patients 3.5-<5.3 mmol/L	% patients 5.3-<6.2 mmol/L	% patients ≥6.2 mmol/L
1997	1158	5.1	1.4	5.1	4.2	5.9	8	49	24	19
1998	1166	5.1	1.3	5	4.2	5.8	7	53	22	17
1999	1871	5	1.3	4.9	4.1	5.7	10	54	20	15
2000	2956	5	1.2	4.9	4.2	5.8	8	53	23	16
2001	3898	5.1	1.3	4.9	4.2	5.8	8	52	24	16
2002	4751	5	1.2	4.9	4.2	5.7	9	55	24	13
2003	5806	4.8	1.1	4.8	4.1	5.5	9	59	21	11
2004	6710	4.7	1.1	4.7	4	5.4	11	60	21	8
2005	7906	4.7	1.1	4.6	4	5.3	12	61	19	8
2006	9977	4.6	1.1	4.6	3.9	5.3	14	62	17	7

**Figure 8.2.1:** Cumulative distribution of serum Cholesterol, HD patients 1997-2006



**Figure 8.2.2:** Cumulative distribution of serum Cholesterol, CAPD patients 1997-2006



In 2006, as in previous years, total cholesterol levels in CAPD patients was less optimally controlled in comparison with HD patients, with 57% of CAPD patients achieving total cholesterol < 5.3 mmol/l (Table 8.2.2).

**Table 8.2.2:** Distribution of serum Cholesterol, CAPD patients 1997-2006

Year	No. of subjects	Mean	SD	Median	LQ	UQ	% patients <3.5 mmol/L	% patients 3.5-<5.3 mmol/L	% patients 5.3-<6.2 mmol/L	% patients ≥6.2 mmol/L
1997	420	6.1	1.4	6	5.1	6.9	2	27	28	43
1998	348	6	1.4	5.9	5	6.8	3	29	28	41
1999	434	5.7	1.4	5.6	4.9	6.4	3	37	30	31
2000	526	5.9	1.6	5.7	4.9	6.7	3	31	30	36
2001	581	5.8	1.4	5.7	4.8	6.6	2	36	27	35
2002	766	5.6	1.4	5.5	4.6	6.4	4	38	28	29
2003	1104	5.4	1.4	5.3	4.4	6.1	5	45	27	23
2004	1230	5.3	1.4	5.2	4.4	6.1	5	48	26	21
2005	1242	5.2	1.3	5	4.3	5.9	5	55	22	18
2006	1394	5.2	1.4	5.1	4.3	5.9	6	51	25	18

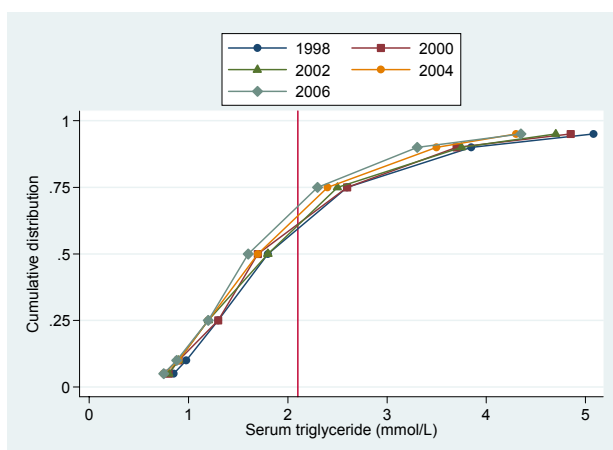


In 2006, serum triglyceride control was better in HD patients than CAPD patients, with 75% of HD patients achieving serum triglyceride levels < 2.3 mmol/l ( Table 8.2.3) compared to 69% of CAPD patients achieving serum triglyceride level <2.3 mmol/l (Table 8.2.4). This trend of better control of triglyceride levels in HD patients has been demonstrated in previous years.

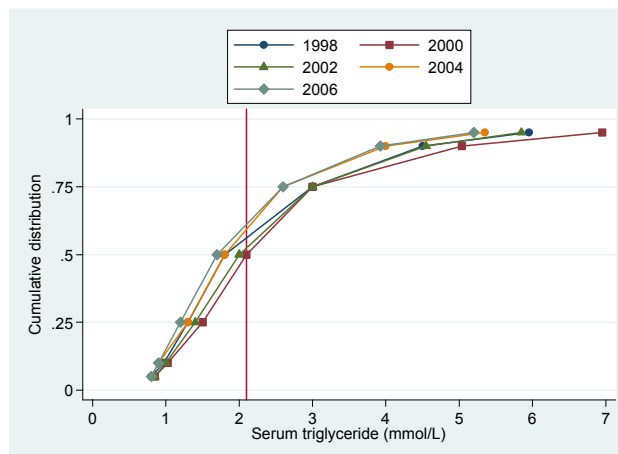
**Table 8.2.3:** Distribution of serum Triglyceride, HD patients 1997-2006

Year	No. of subjects	Mean	SD	Median	LQ	UQ	% patients <1.7 mmol/L	% patients 1.7-<2.3 mmol/L	% patients 2.3-<3.5 mmol/L	% patients ≥3.5 mmol/L
1997	1074	2.1	1.4	1.8	1.3	2.5	45	24	18	12
1998	1089	2.2	1.5	1.8	1.3	2.6	42	26	20	12
1999	1633	2.1	1.3	1.7	1.2	2.5	49	21	18	11
2000	2393	2.1	1.4	1.7	1.3	2.6	48	22	19	12
2001	3162	2.1	1.4	1.7	1.2	2.5	48	22	17	13
2002	3861	2.1	1.4	1.8	1.2	2.5	47	22	18	12
2003	4710	2	1.3	1.7	1.2	2.5	48	23	18	11
2004	5607	2	1.2	1.7	1.2	2.4	51	23	17	10
2005	6950	2	1.3	1.7	1.2	2.4	50	22	18	10
2006	9377	2	1.3	1.6	1.2	2.3	54	21	16	9

**Figure 8.2.3:** Cumulative distribution of serum Triglyceride (mmol/L), HD patients 1997-2006



**Figure 8.2.4:** Cumulative distribution of serum Triglyceride, CAPD patients 1997-2006



**Table 8.2.4:** Distribution of serum Triglyceride, CAPD patients 1997-2006

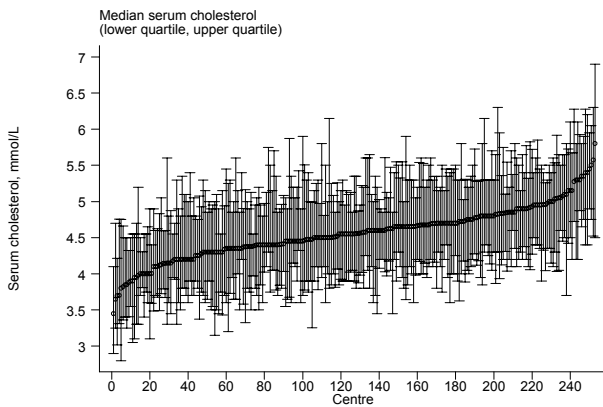
Year	No. of subjects	Mean	SD	Median	LQ	UQ	% patients <1.7 mmol/L	% patients 1.7-<2.3 mmol/L	% patients 2.3-<3.5 mmol/L	% patients ≥3.5 mmol/L
1997	413	2.6	1.9	2.2	1.4	3	36	22	25	18
1998	344	2.4	1.8	1.8	1.3	3	42	22	17	19
1999	421	2.4	1.6	2	1.4	3	38	25	18	19
2000	520	2.7	2.2	2.1	1.5	3	33	24	23	21
2001	576	2.6	1.8	2	1.4	3	36	22	22	20
2002	767	2.5	1.7	2	1.4	3	39	21	22	18
2003	1100	2.3	1.6	1.8	1.2	2.8	45	20	21	14
2004	1223	2.2	1.6	1.8	1.3	2.6	47	23	17	13
2005	1241	2.2	1.5	1.8	1.3	2.7	43	24	18	14
2006	1390	2.2	1.6	1.7	1.2	2.6	47	22	18	13

The mild variation in median serum cholesterol levels and median serum triglyceride levels among HD centers were similar to previous years (Table 8.2.5 (a) and (c)). It is noted that the median of the proportion of patients with serum cholesterol level < 5.3 mmol/l in HD centers has gradually increased from 56% in 1997 to 75% in 2006 (Table 8.2.5 (b)). The median of the proportion of patients with serum triglyceride level < 2.3 mmol/l in HD centers has also gradually increased from 65% in 1997 to 70% in 2006 (Table 8.2.5 (d)).

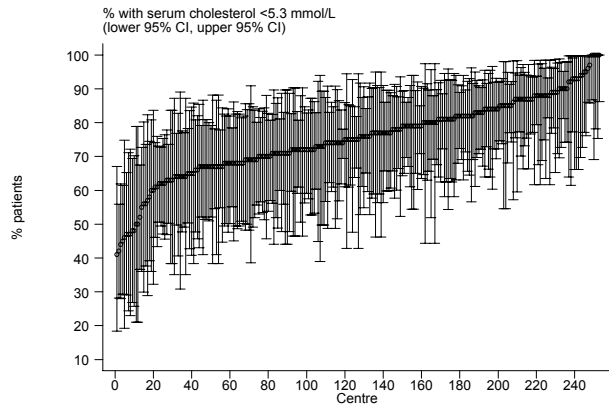
**Table 8.2.5:** Variation in dyslipidaemia among HD centres 2005  
(a) Median serum cholesterol level among HD patients

Year	No. of centres	Min	5th Centile	LQ	Median	UQ	95th Centile	Max
1997	34	4.1	4.3	4.6	5	5.3	5.8	5.9
1998	30	4.2	4.4	4.7	5	5.3	5.5	5.5
1999	47	3.5	4.2	4.6	4.8	5	5.6	5.7
2000	77	4.2	4.3	4.7	4.9	5.2	5.5	5.9
2001	95	4.1	4.4	4.7	5	5.2	5.6	6.3
2002	124	4.4	4.5	4.7	4.9	5.1	5.4	6
2003	150	4.2	4.3	4.6	4.8	5	5.3	5.8
2004	179	3.7	4.1	4.5	4.7	4.9	5.3	6.2
2005	209	3.8	4.2	4.4	4.6	4.8	5.2	5.6
2006	253	3.5	4	4.3	4.6	4.8	5.2	5.6

**Figure 8.2.5(a):** Variation in median serum cholesterol level among HD patients, HD centres 2006



**Figure 8.2.5(b):** Variation in proportion of patients with serum cholesterol < 5.3 mmol/L, HD centres 2006



(b) Proportion of patients with serum cholesterol < 5.3 mmol/L

Year	No. of centres	Min	5th Centile	LQ	Median	UQ	95th Centile	Max
1997	34	32	35	49	56	65	81	92
1998	30	30	30	51	62	68	86	90
1999	47	38	38	57	64	77	85	89
2000	77	27	36	52	61	68	86	94
2001	95	14	36	53	60	68	79	83
2002	124	32	47	56	64	71	77	94
2003	150	36	46	60	67.5	76	84	92
2004	179	36	47	63	71	78	90	94
2005	209	29	53	65	74	81	89	100
2006	253	41	52	68	75	83	93	100

Table 8.2.5(c) Median serum triglyceride level among HD patients

Year	No. of centres	Min	5th Centile	LQ	Median	UQ	95th Centile	Max
1997	33	1.3	1.3	1.6	1.8	1.9	2.5	2.9
1998	28	1.4	1.5	1.7	1.8	2	2.1	2.3
1999	41	1.2	1.3	1.5	1.7	1.9	2.2	2.5
2000	60	1.2	1.4	1.5	1.8	2	2.6	3
2001	80	1.1	1.4	1.5	1.7	2	2.3	2.5
2002	99	1.1	1.4	1.6	1.8	2	2.5	3.2
2003	128	1.2	1.3	1.5	1.7	1.9	2.2	2.5
2004	157	1	1.3	1.5	1.7	1.8	2.2	2.8
2005	187	0.9	1.3	1.5	1.7	1.9	2.2	2.6
2006	243	0.9	1.2	1.5	1.6	1.8	2.2	2.9

Figure 8.2.5(c): Variation in median serum triglyceride level among HD patients, HD centres 2006

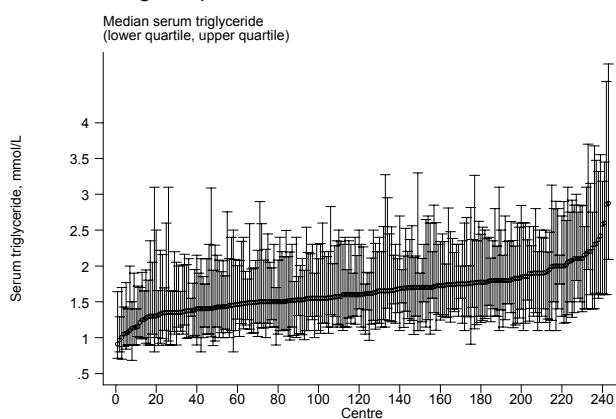


Figure 8.2.5(d): Variation in proportion of patients with serum triglyceride < 2.1 mmol/L, HD centres 2006

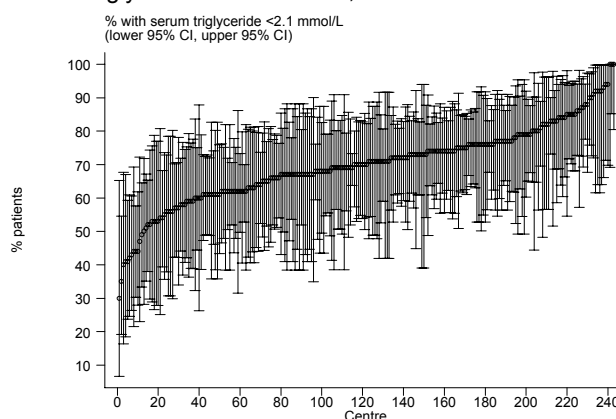


Table 8.2.5(d) Proportion of patients with serum triglyceride < 2.1 mmol/L

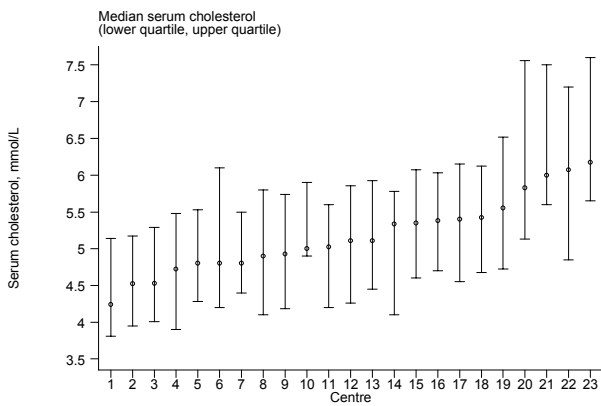
Year	No. of centres	Min	5th Centile	LQ	Median	UQ	95th Centile	Max
1997	33	23	36	59	65	77	84	87
1998	28	44	50	56.5	62.5	69.5	82	82
1999	41	36	47	60	67	73	81	91
2000	60	23	36.5	57	65.5	73.5	83	85
2001	80	38	44.5	55.5	65	75	83	90
2002	99	0	42	54	65	72	81	94
2003	128	27	44	56.5	67	75.5	89	100
2004	157	21	47	60	69	78	86	94
2005	187	33	45	60	67	73	83	94
2006	243	30	50	62	70	76	89	100

In 2006 the variation in median serum cholesterol levels and median serum triglyceride levels among CAPD centers were similar to previous years (Table 8.2.6 (a) and (c)). It is noted that the median of the proportion of patients with cholesterol level < 5.3 mmol/l in CAPD centers has gradually increased markedly from 29% in 1997 to 59% in 2006 (Table 8.2.6 (b)). The median of the proportion of patients with serum triglyceride level 2.3 mmol/l in CAPD centers has also gradually increased from 52% in 1997 to 61.5% in 2006 (Table 8.2.6 (d)).

**Table 8.2.6:** Variation in dyslipidaemia among CAPD centres 2006  
(a) Median serum cholesterol level among CAPD patients

Year	No. of centres	Min	5th Centile	LQ	Median	UQ	95th Centile	Max
1997	6	5.8	5.8	5.9	5.9	6.1	6.1	6.1
1998	6	4.8	4.8	5.6	5.8	6.1	6.2	6.2
1999	8	5.1	5.1	5.4	5.7	5.8	6	6
2000	10	5.2	5.2	5.4	5.6	5.9	6.4	6.4
2001	10	5	5	5.6	5.9	6.1	6.2	6.2
2002	15	4.9	4.9	5.4	5.5	5.8	6.3	6.3
2003	19	4.5	4.5	4.9	5.3	5.8	6.1	6.1
2004	19	4.6	4.6	4.9	5.3	5.5	6.2	6.2
2005	19	4.4	4.4	4.7	5	5.3	6	6
2006	23	4.2	4.5	4.8	5.1	5.4	6.1	6.2

**Figure 8.2.6(a):** Variation in median serum cholesterol level among CAPD patients, CAPD centres 2006



**Figure 8.2.6(b):** Variation in proportion of patients with serum cholesterol < 5.3 mmol/L, CAPD centres 2006

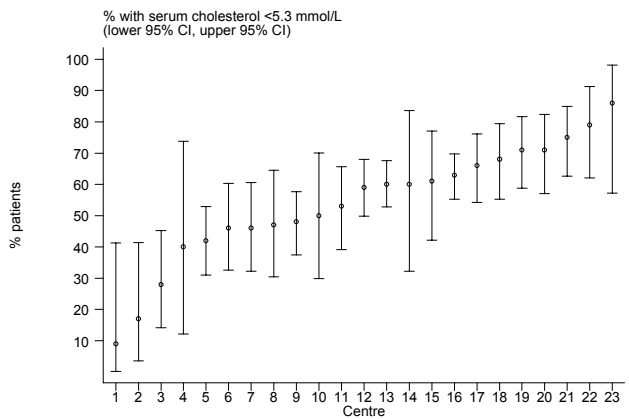


Table 8.2.6(b) Proportion of patients with serum cholesterol < 5.3 mmol/L

Year	No. of centres	Min	5th Centile	LQ	Median	UQ	95th Centile	Max
1997	6	27	27	27	29	31	33	33
1998	6	24	24	27	32	37	53	53
1999	8	10	10	36.5	39.5	45	56	56
2000	10	11	11	18	31	46	54	54
2001	10	22	22	30	34.5	45	63	63
2002	15	16	16	33	42	46	80	80
2003	19	8	8	35	47	58	82	82
2004	19	9	9	40	50	60	72	72
2005	19	28	28	50	60	70	75	75
2006	23	9	17	46	59	68	79	86

Table 8.2.6(c) Median serum triglyceride level among CAPD patients

Year	No. of centres	Min	5th Centile	LQ	Median	UQ	95th Centile	Max
1997	6	1.7	1.7	1.9	2.1	2.2	2.4	2.4
1998	6	1.2	1.2	1.5	1.7	1.9	2.1	2.1
1999	8	1.6	1.6	1.9	2	2.1	2.6	2.6
2000	10	1.8	1.8	2	2.3	2.5	2.6	2.6
2001	10	1.5	1.5	1.9	2	2.1	3	3
2002	15	1.5	1.5	1.8	1.9	2	2.4	2.4
2003	19	1.4	1.4	1.7	1.8	2	2.3	2.3
2004	19	1.3	1.3	1.6	1.8	1.8	2.1	2.1
2005	19	1.3	1.3	1.6	1.9	2	2.2	2.2
2006	22	1.2	1.4	1.6	1.8	1.9	2.4	2.5

Figure 8.2.6(c): Variation in median serum triglyceride level among CAPD patients, CAPD centres 2006

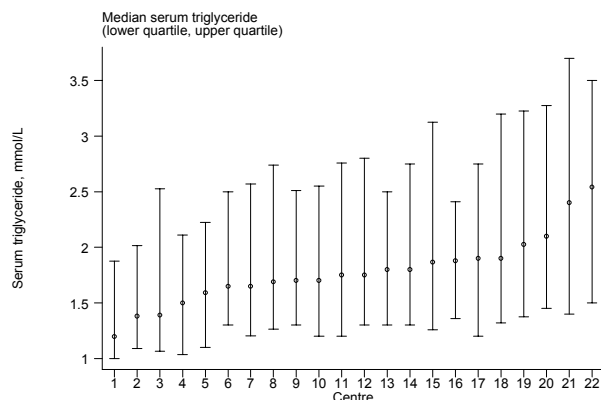


Figure 8.2.6(d): Variation in proportion of patients with serum triglyceride < 2.1 mmol/L, CAPD centres 2006

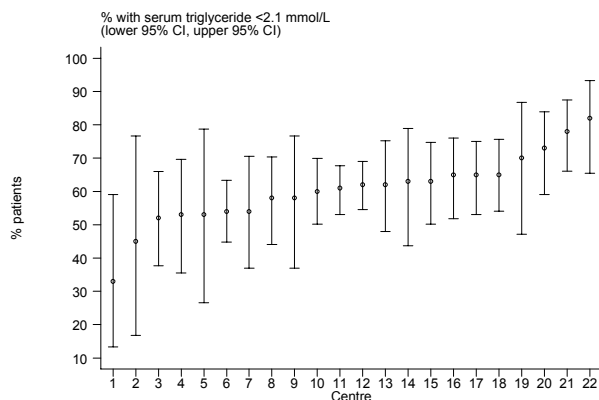


Table 8.2.5(d) Proportion of patients with serum triglyceride < 2.1 mmol/L

Year	No. of centres	Min	5th Centile	LQ	Median	UQ	95th Centile	Max
1997	6	40	40	46	52	56	61	61
1998	6	51	51	55	61	70	85	85
1999	8	37	37	53.5	56	60.5	64	64
2000	10	18	18	42	49	54	62	62
2001	10	27	27	50	53	58	68	68
2002	15	37	37	52	53	57	78	78
2003	19	46	46	54	58	62	91	91
2004	19	50	50	60	62	69	89	89
2005	19	38	38	53	60	69	89	89
2006	22	33	45	54	61.5	65	78	82