

Table 5.01: Stock and Flow of Paediatric Renal Replacement Therapy 1997-2006

Year	1997	1998	1999	2000	2001	2002	2003	2004	2005	2006
New HD patients	21	21	23	12	24	28	33	39	34	46
New CAPD patients	20	28	12	37	39	54	39	41	47	42
New Transplants	14	6	29	14	8	11	11	9	17	19
HD deaths	3	3	37	4	1	11	6	10	9	7
CAPD deaths	3	7	11	3	8	8	9	5	9	15
Transplant deaths	0	0	14	1	0	1	1	0	1	1
On HD at 31st Dec	70	90	2	120	144	162	186	218	241	279
On CAPD at 31st Dec	62	73	4	109	123	152	163	176	192	189
Functioning transplant at 31 st December	71	74	2	90	94	102	107	114	125	139

Figure 5.01a: Incident cases of RRT by modality in children under 20 years old, 1997-2006

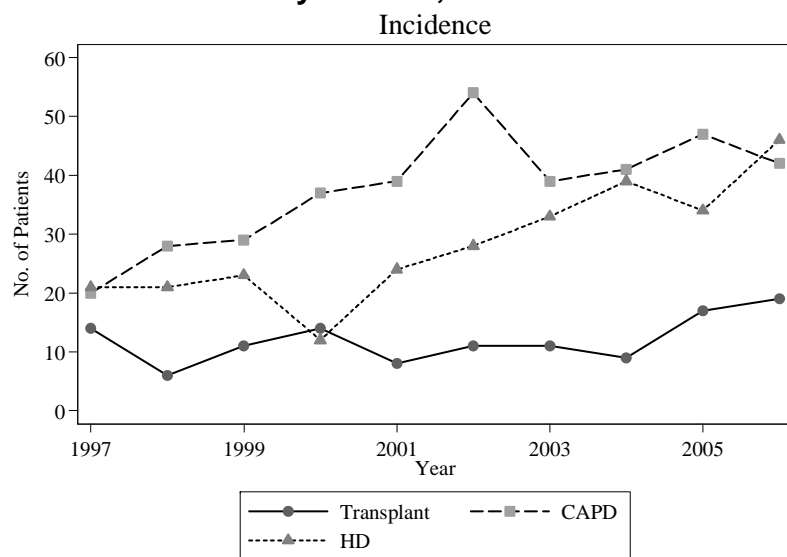


Figure 5.01b: Prevalent cases of RRT by modality in children under 20 years old, 1997-2006

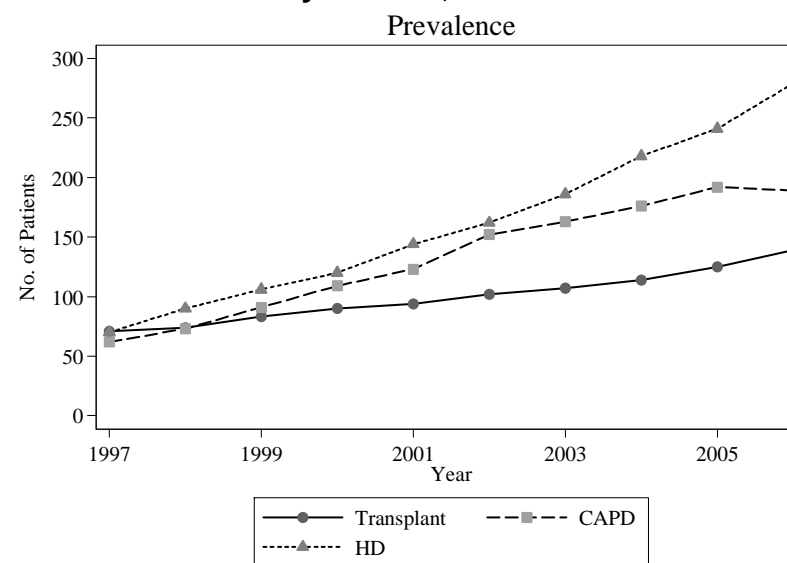


Table 5.02: Paediatric Dialysis and Transplant Rates per million age-group population 1997-2006

Year	1997	1998	1999	2000	2001	2002	2003	2004	2005	2006
Incidence Rate										
New HD	2	2	2	1	2	3	3	4	3	4
New CAPD	2	3	3	4	4	5	4	4	4	4
New Transplant	1	1	1	1	1	1	1	1	2	2
All RRT	5	5	5	5	6	8	7	7	8	8
Prevalence Rate at 31st December										
On HD	7	9	11	12	14	15	17	20	22	25
On CAPD	6	7	9	11	12	14	15	16	17	17
Functioning Graft	7	8	8	9	9	10	10	10	11	12
All RRT	20	24	28	32	35	39	42	46	50	54

Figure 5.02: Incidence and prevalence rate per million age related population years old on RRT, 1997-2006

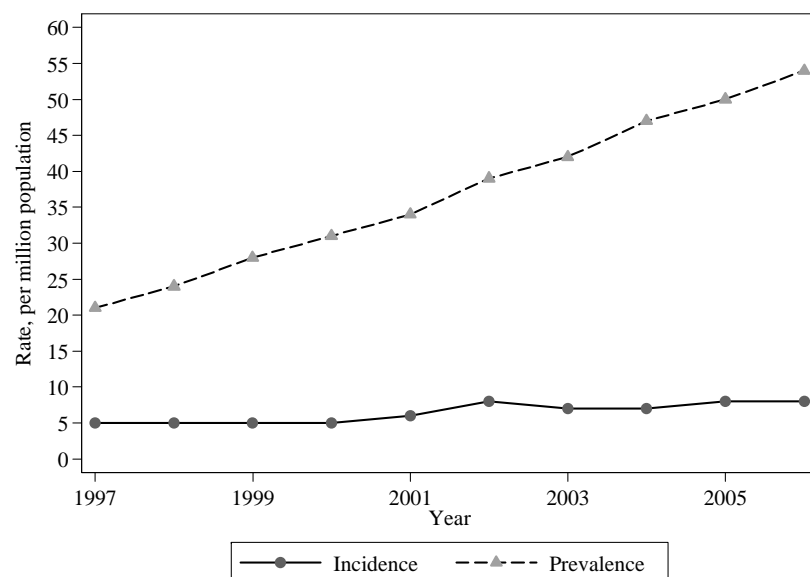


Table 5.03a: Dialysis Treatment Rate by State, per million state age group population, 1997-2006

State	1997-2001	2002-2006
Melaka	45	52
Pulau Pinang	45	52
Negeri Sembilan	45	52
Johor Takzim	45	52
Perak Darul Redzuan	45	52
Terengganu Darul Iman	45	52
Kedah & Perlis	45	52
Kelantan Darul Naim	45	52
Pahang Darul Makmur	45	52
Selangor & Wilayah Persekutuan	45	52
Sarawak	45	52
Sabah	7	6

Table 5.03b: New Dialysis Patients by State, 1997-2006

State	1997-2001	2002-2006
Selangor & W. Persekutuan	80	95
Johor Darul Takzim	45	60
Perak Darul Redzuan	15	47
Pulau Pinang	15	40
Sabah	13	38
Kedah & Perlis	34	36
Sarawak	21	36
Kelantan Darul Naim	9	31
Pahang Darul Makmur	18	25
Negeri Melaka	9	23
Negeri Sembilan	18	22
Terengganu Darul Iman	17	21

Figure 5.04: Number of New Dialysis and Transplant Patients by gender 1997-2006

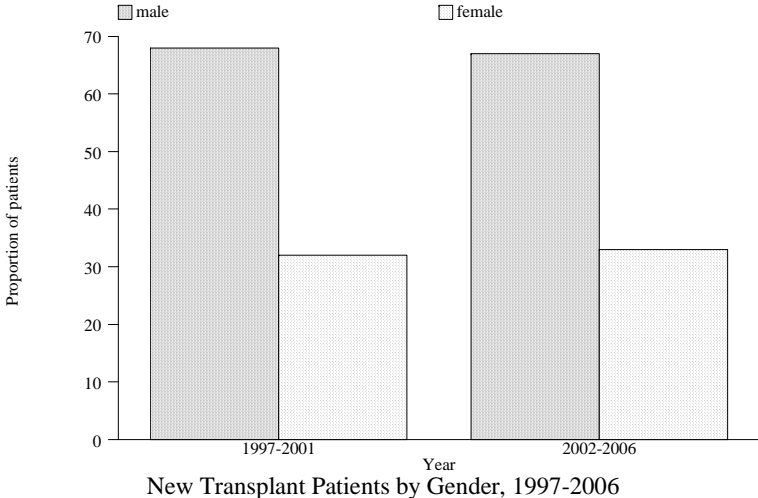
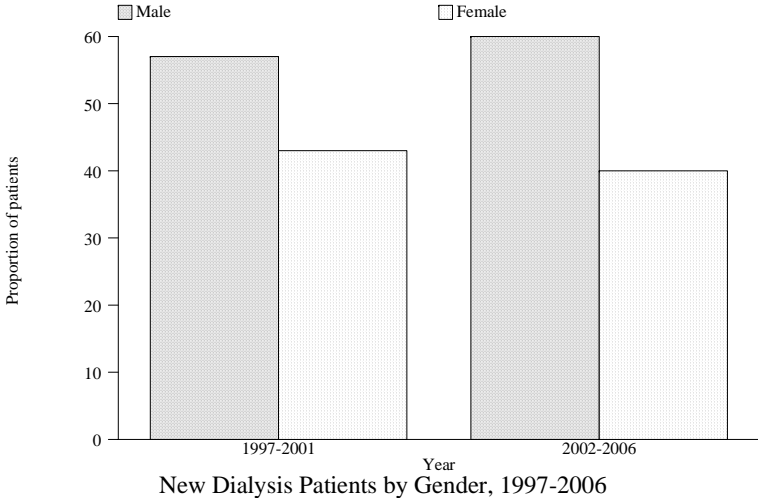


Figure 5.05: Dialysis and Transplant Treatment Rate by Age group 1997-2006

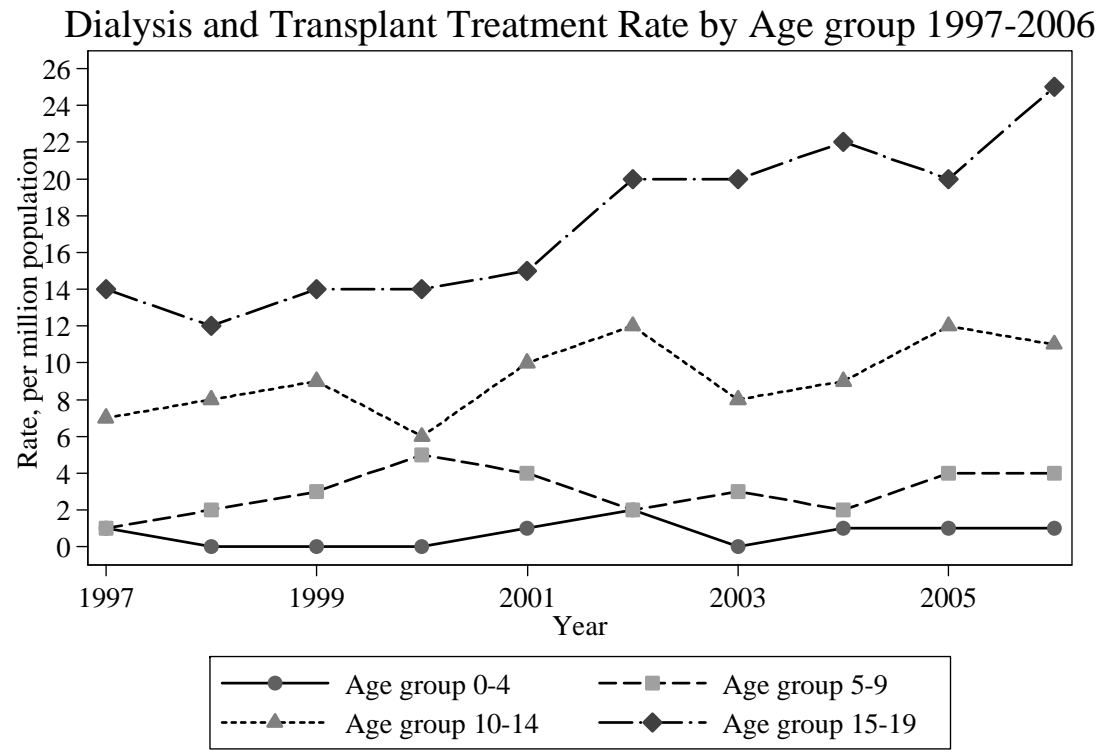


Figure 5.06: New Dialysis by treatment modality 1997-2006

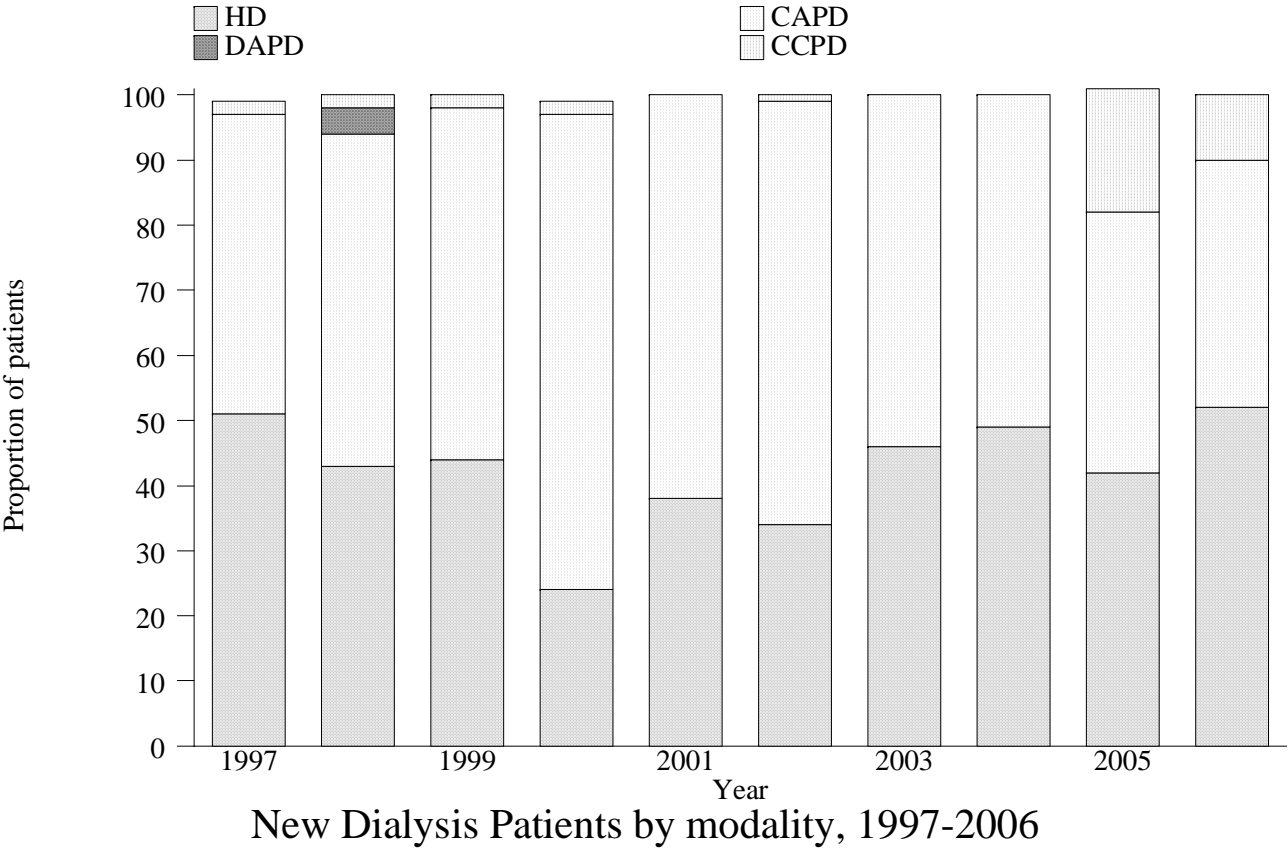
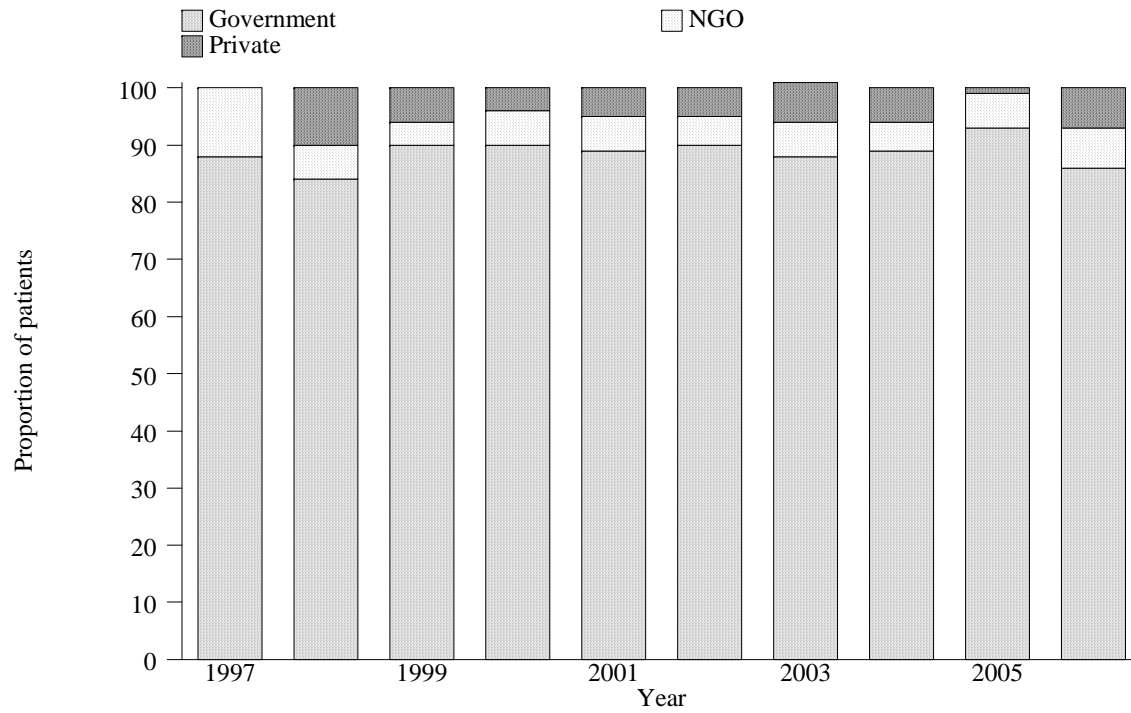


Figure 5.07: New Dialysis by sector 1997-2006



New Dialysis Patients by sector, 1997-2006

Table 5.08: Primary renal disease by sex, 1997-2006

Primary Renal Disease	Male		Female		All	
	N	%	N	%	N	%
Glomerulonephritis	99	25	64	23	163	24
FSGS	38	10	27	10	65	10
Refux nephropathy	23	6	7	3	30	4
SLE	13	3	39	14	52	8
Obstructive uropathy	33	8	9	3	42	6
Renal dysplasia	12	3	6	2	18	3
Others	9	2	10	4	19	3
Hereditary nephritis	11	3	1	0	12	2
Cystic kidney disease	4	1	4	1	8	1
Drug induced nephropathy	0	0	1	0	1	0
Metabolic	3	1	1	0	4	1
Unknown	154	39	108	39	262	39
Total	399	100	277	100	676	100

Table 5.09: Types of Renal Transplant 1997-2006

Year	1997-2001		2002-2006	
	No.	%	No.	%
Commercial Cadaver	8	15	17	20
Commercial Living donor	3	6	2	3
Living related donor	29	55	42	53
Cadaver	13	25	19	24
Living emotionally related	0	0	0	0
TOTAL	53	100	67	100

Table 5.10: Patient Survival by Modality of RRT, 1997-2006

Modality Interval (years)	Transplant			CAPD			HD		
	No.	% survival	SE	No.	% survival	SE	No.	% survival	SE
1	91	98	1	306	95	1	272	95	1
5	41	94	3	64	79	3	81	84	2
10	2	92	4	-	-	-	2	75	5

* No. = Number at risk SE = Standard Error

Figure 5.10: Patient Survival by Modality of RRT, 1997-2006

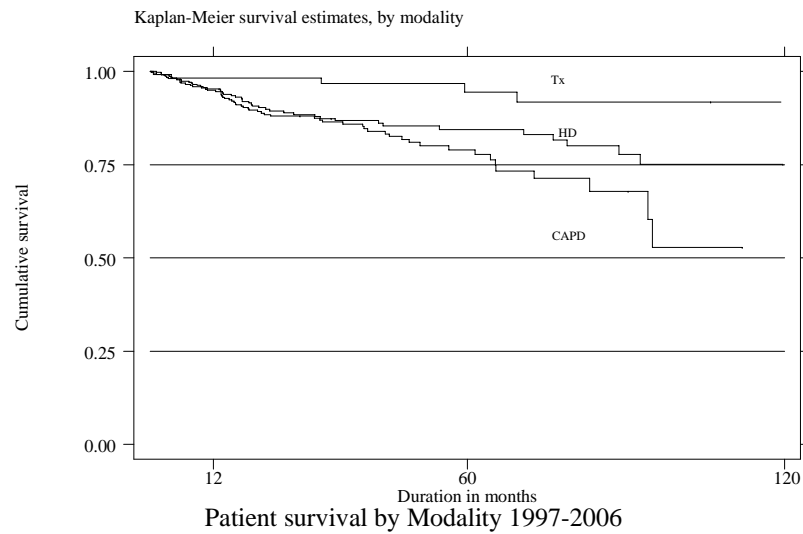


Table 5.11: Dialysis Technique Survival by Modality, 1997-2006

Modality Interval (years)	CAPD			HD		
	No.	% survival	SE	No.	% survival	SE
1	306	91	2	272	91	2
5	64	51	3	81	80	3
10	-	-	-	2	71	5

* No. = Number at risk SE = Standard Error

Figure 5.11: Dialysis Technique Survival by Modality, 1997-2006

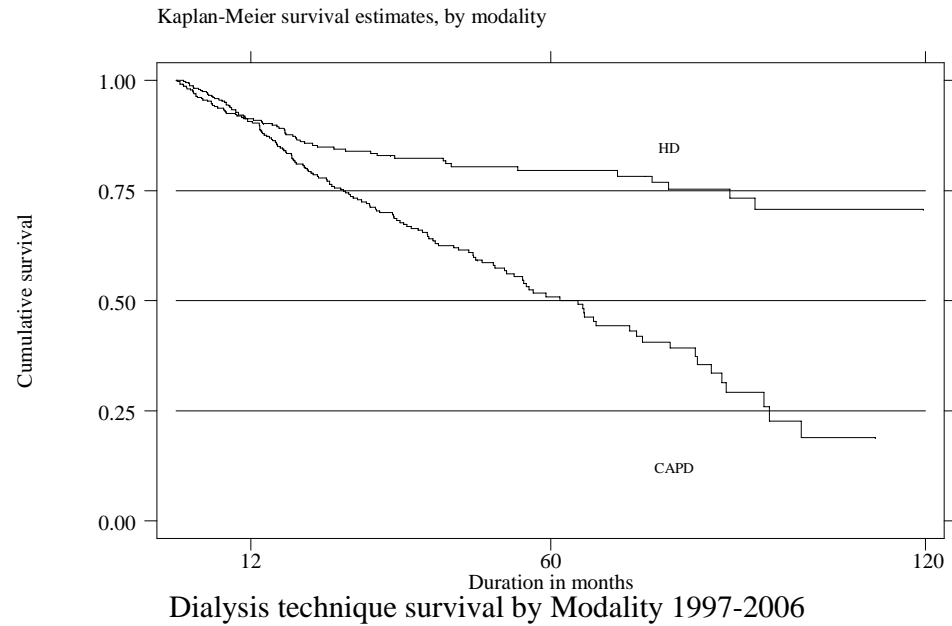


Table 5.12: Transplant Graft Survival 1997-2006

Interval (years)	No.	% survival	SE
1	91	89	3
5	41	81	4
10	2	66	7

* No. = Number at risk SE = Standard Error

Figure 5.12: Transplant Graft Survival 1997-2006

