

Table 7.1.1: Distribution of serum Albumin, HD patients 1997-2006

Year	No. of subjects	Mean	SD	Median	LQ	UQ	% patients <30g/L	% patients 30-<35g/L	% patients 35-<40g/L	% patients ≥40g/L
1997	1644	40.9	6.2	41	37.7	44.3	3	8	30	59
1998	2075	41.2	6.5	41	37.5	44.7	3	9	28	59
1999	2755	39.7	6.1	39.7	36.3	43	4	13	35	49
2000	3733	38.6	7	39	36	42	5	11	41	43
2001	4666	39	5.6	38.5	36	41.8	3	15	44	38
2002	5568	39.2	5.6	39	36.5	42	3	12	42	43
2003	6524	39.9	5.4	40	37.3	42.5	3	9	35	52
2004	7581	39.9	5.3	40	37	42.8	3	10	34	53
2005	8706	40	5.2	40.3	37.5	42.8	3	9	33	56
2006	10763	39.9	5.3	40.3	37.5	42.8	3	9	33	54

Figure 7.1.1: Cumulative distribution of Albumin, HD patients 1997-2006

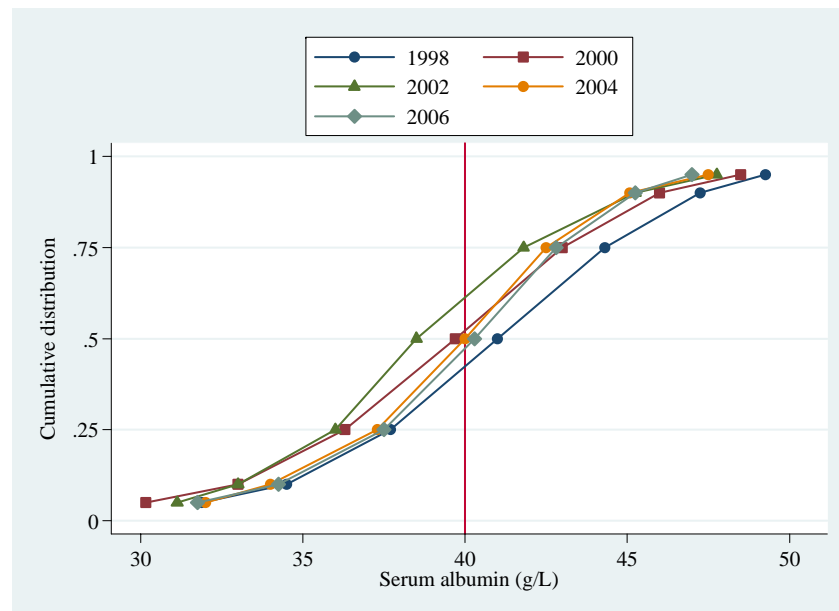


Table 7.1.2: Distribution of serum Albumin (g/L), CAPD patients 1997-2006

Year	No. of subjects	Mean	SD	Median	LQ	UQ	% patients <30g/L	% patients 30-<35g/L	% patients 35-<40g/L	% patients ≥40g/L
1997	471	35.7	6.8	35.7	31.5	39.5	16	28	34	22
1998	536	35.8	6.7	36	32	39.7	16	25	35	24
1999	597	34.1	6.6	34	30.8	38	21	33	32	14
2000	640	34.3	6.1	35	31	38.3	20	28	37	14
2001	750	33.3	6.2	33.6	29.3	37	27	33	28	12
2002	862	33.9	5.9	34.3	30.8	37.5	21	35	33	12
2003	1180	33.3	5.8	33.8	29.7	37.3	26	33	30	11
2004	1284	33	6	33.8	29.5	37.3	27	32	30	11
2005	1346	33.2	6.4	33.3	29.5	37	27	33	30	10
2006	1497	33.5	6.1	33.8	30	37	25	33	30	12

Figure 7.1.2: Cumulative distribution of Albumin (g/L), CAPD patients 1997-2006

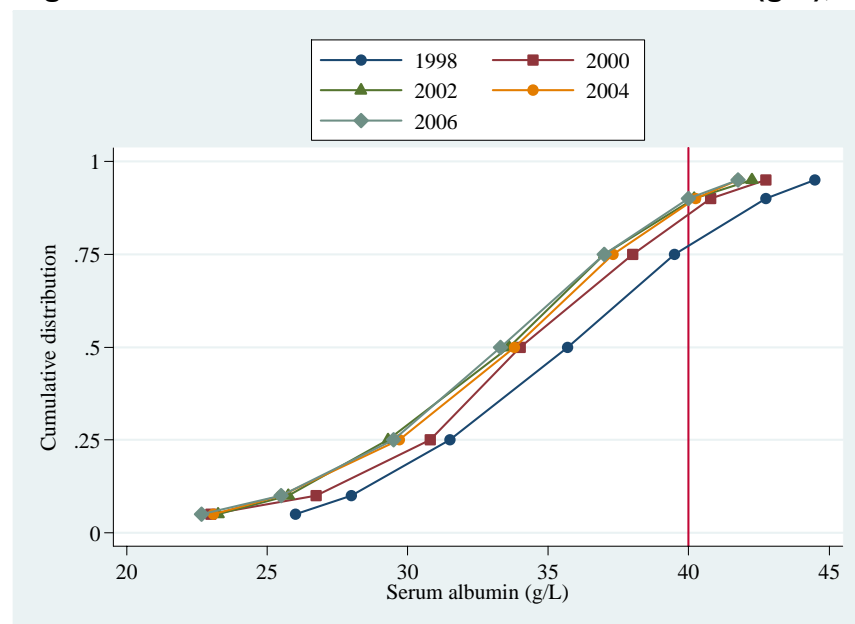


Table 7.1.3: Variation in Proportion of patients with serum albumin >40g/L among HD centres 2006

Year	No. of centres	Min	5 th Centile	LQ	Median	UQ	95 th Centile	Max
1997	44	0	10	32.5	61	76.5	95	97
1998	49	7	15	31	58	80	95	96
1999	70	2	8	23	52	65	91	100
2000	94	0	8	22	42.5	62	82	93
2001	116	0	3	17	41	57	82	100
2002	142	0	8	26	44	63	86	100
2003	166	0	17	39	54.5	70	92	100
2004	198	0	10	34	57	73	89	100
2005	226	4	9	43	56	72	88	100
2006	272	0	12	37	55	73	89	100

Figure 7.1.3: Variation in Proportion of patients with serum albumin >40g/L, HD centres 2006

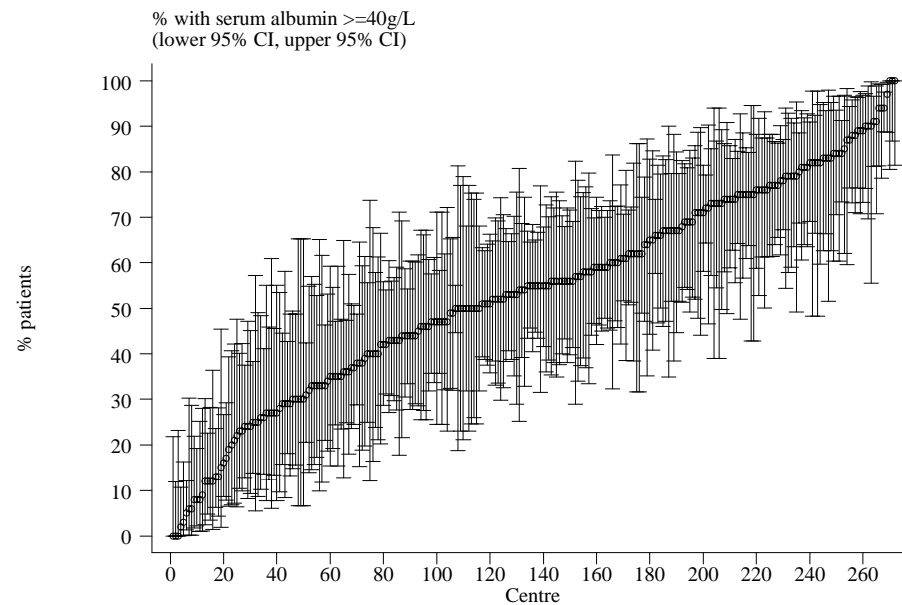


Table 7.1.4: Variation in Proportion of patients with serum albumin >40g/L among CAPD centres 2006

Year	No. of centres	Min	5 th Centile	LQ	Median	UQ	95 th Centile	Max
1997	7	5	5	10	28	29	59	59
1998	9	3	3	18	27	34	45	45
1999	10	2	2	8	14.5	18	29	29
2000	11	0	0	5	13	28	42	42
2001	12	2	2	4.5	16	27	36	36
2002	15	4	4	7	12	21	36	36
2003	19	1	1	9	14	23	55	55
2004	19	1	1	8	13	22	34	34
2005	21	0	1	6	13	22	27	29
2006	24	0	1	5	11.5	20	36	74

Figure 7.1.4: Variation in Proportion of patients with serum albumin >40g/L, CAPD centres 2006

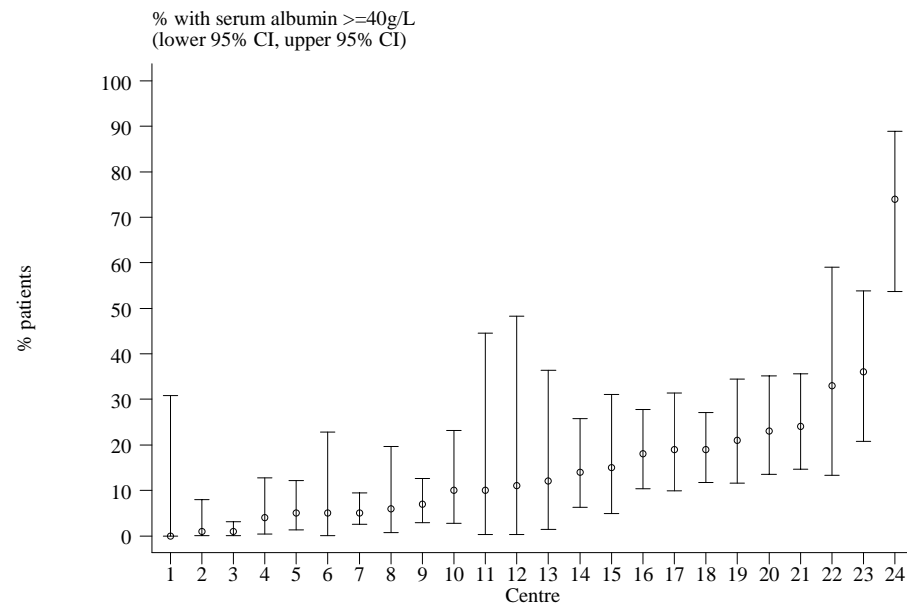


Table 7.2.1: Distribution of BMI, HD patients 1997-2006

Year	No of subjects	Mean	SD	Median	LQ	UQ	% patients <18.5	% patients 18.5-25	% patients >=25
1997	1545	23.6	16.3	21.5	19.1	24.2	19	61	20
1998	1980	24.1	18.3	21.6	19.1	24.3	19	60	21
1999	2708	23.5	15.9	21.4	19.2	24.4	18	61	21
2000	3854	22.9	11.7	21.7	19.3	24.5	18	60	22
2001	4544	23	11	21.9	19.3	24.7	18	59	23
2002	5090	23.2	10.6	22.1	19.5	24.9	16	59	24
2003	5971	23.1	9.7	22.1	19.5	25.1	16	58	26
2004	6749	23.3	9	22.4	19.8	25.4	14	58	28
2005	7799	23.4	9	22.5	19.8	25.6	14	57	29
2006	9526	23.3	7.7	22.5	19.9	25.7	14	56	29

Figure 7.2.1: Cumulative distribution of BMI, HD patients 1997-2006

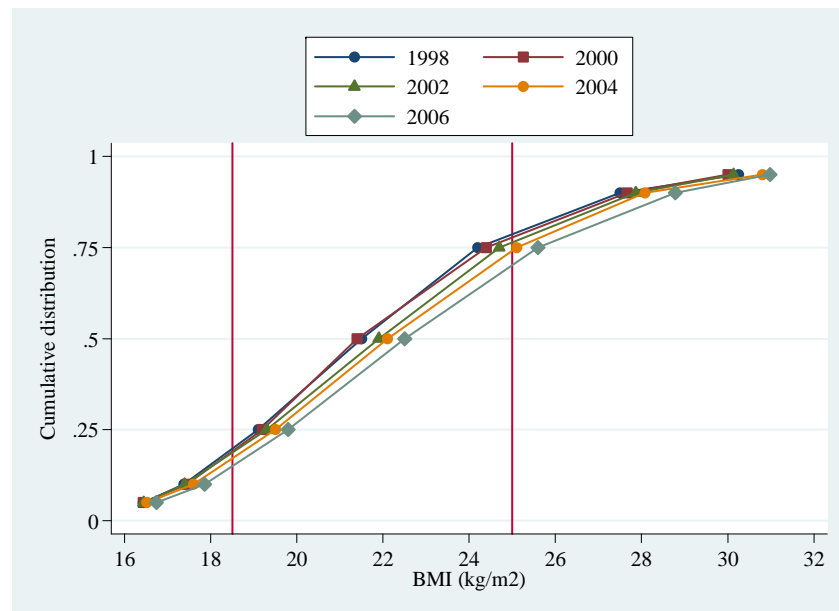


Table 7.2.2: Distribution of BMI, CAPD patients 1997-2006

Year	No of subjects	Mean	SD	Median	LQ	UQ	% patients <18.5	% patients 18.5-25	% patients >=25
1997	420	22.6	12.5	21.9	18.9	24.7	21	56	23
1998	491	22	11.1	21.3	18.7	24	23	57	20
1999	552	21.7	4.5	21.5	18.9	24.4	22	56	22
2000	602	21.7	4.5	21.5	18.6	24.6	25	53	22
2001	663	22.1	5	21.8	18.7	25.2	23	50	27
2002	750	22.3	4.9	22.1	18.7	25.5	23	47	30
2003	1068	22.9	6.8	22.5	19.2	25.8	20	50	30
2004	1172	23.1	7.2	22.6	19.5	26	18	51	31
2005	1221	23	7.1	22.5	19.4	25.9	19	51	30
2006	1413	23.4	8.2	22.6	19.7	26.1	16	51	33

Figure 7.2.2: Cumulative distribution of BMI, CAPD patients 1997-2006

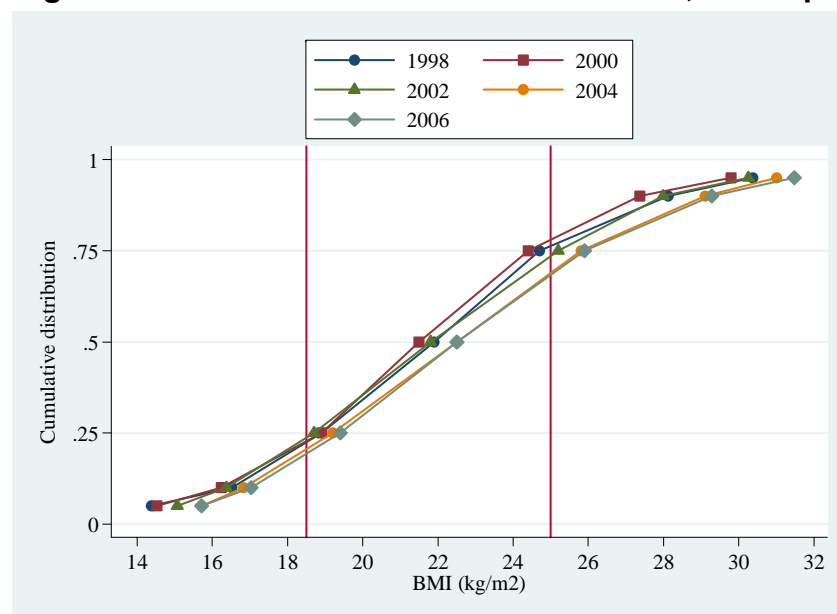


Table 7.2.3: Variation in Proportion of patients with BMI ≥ 18.5 among HD centres 2006

Year	No. of centres	Min	5 th Centile	LQ	Median	UQ	95 th Centile	Max
1997	44	62	64	74.5	81	88	100	100
1998	48	58	68	75.5	81.5	86	95	100
1999	72	59	67	78	82	90	95	100
2000	96	55	67	75	82	89	96	100
2001	110	60	68	77	83	89	94	100
2002	131	55	67	78	85	90	100	100
2003	156	55	69	79	84	91	100	100
2004	188	57	68	80	86	91	100	100
2005	208	64	70	81	88	93	100	100
2006	259	55	71	81	87	92	100	100

Figure 7.2.3: Variation in Proportion of patients with BMI ≥ 18.5 , HD centres 2006

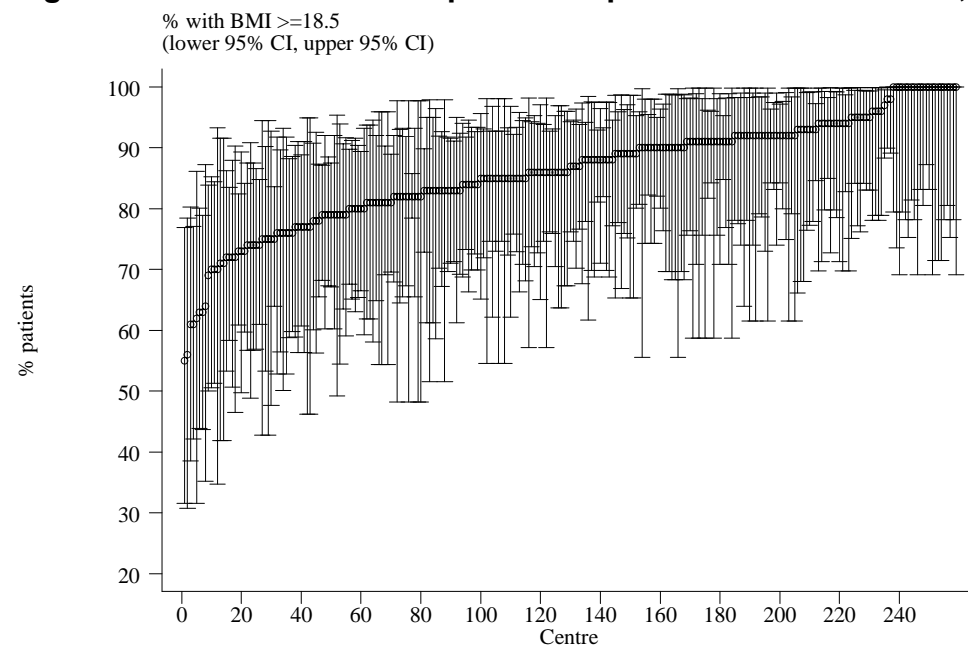


Table 7.2.4: Variation in Proportion of patients with BMI ≥ 18.5 among CAPD centres 2006

Year	No. of centres	Min	5 th Centile	LQ	Median	UQ	95 th Centile	Max
1997	7	50	50	74	81	88	93	93
1998	9	0	0	71	80	89	91	91
1999	9	0	0	71	75	83	93	93
2000	11	11	11	60	76	88	90	90
2001	11	15	15	72	77	88	92	92
2002	15	19	19	65	81	85	87	87
2003	19	17	17	63	81	88	96	96
2004	19	25	25	71	81	89	95	95
2005	19	17	17	67	84	88	91	91
2006	23	30	38	76	84	91	93	94

Figure 7.2.4: Variation in Proportion of patients with BMI >18.5, CAPD centres 2006

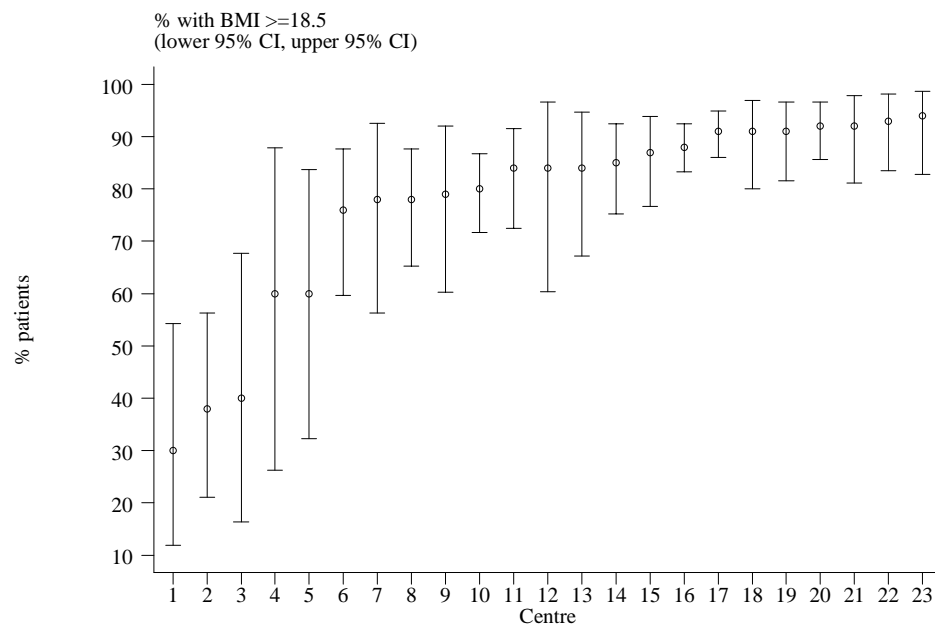


Table 7.2.5: Variation in Proportion of patients with BMI ≤ 18.5 and serum albumin ≤ 30 g/dL among HD centres 2006

Year	No. of centres	Min	5 th Centile	LQ	Median	UQ	95 th Centile	Max
1997	44	0	0	0	0	0	4	8
1998	48	0	0	0	0	0.5	6	8
1999	65	0	0	0	0	1	5	10
2000	87	0	0	0	0	1	9	28
2001	107	0	0	0	0	0	6	10
2002	122	0	0	0	0	0	5	13
2003	149	0	0	0	0	0	5	10
2004	177	0	0	0	0	0	4	9
2005	200	0	0	0	0	0	5.5	14
2006	246	0	0	0	0	0	7	20

Figure 7.2.5: Variation in Proportion of patients BMI ≤18.5 and serum albumin ≤ 30 , HD centres 2006

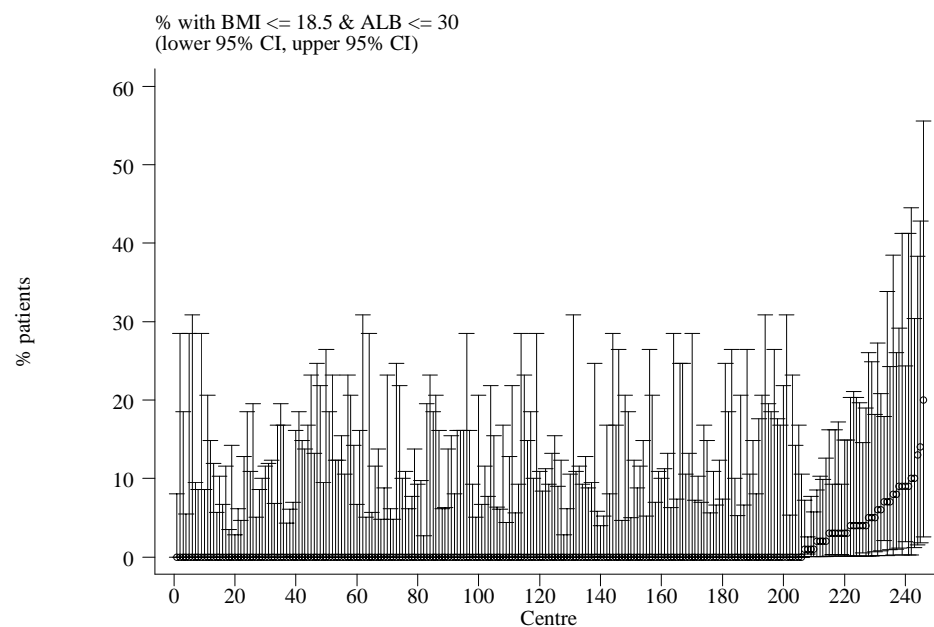


Table 7.2.6: Variation in Proportion of patients with BMI \leq 18.5 and serum albumin \leq 30 g/dL among CAPD centres 2006

Year	No. of centres	Min	5 th Centile	LQ	Median	UQ	95 th Centile	Max
1997	7	0	0	3	6	7	13	13
1998	9	0	0	0	0	3	5	5
1999	9	0	0	0	3	6	29	29
2000	11	0	0	2	5	10	10	10
2001	11	2	2	4	6	9	15	15
2002	15	0	0	0	3	7	20	20
2003	19	0	0	0	4	8	25	25
2004	19	0	0	0	3	6	10	10
2005	19	0	0	3	5	8	12	12
2006	23	0	0	2	4	6	12	21

Figure 7.2.6: Variation in Proportion of patients BMI \leq 18.5 and serum albumin \leq 30 g/dL, CAPD centres 2006

