

Table 10.1: Prevalence of positive HBsAg and positive Anti-HCV at annual survey, HD patients 1997-2006

Year	No. of subjects	Prevalence of HBsAg+ (%)	Prevalence of Anti-HCV+ (%)
1997	1694	6	23
1998	2139	6	22
1999	2991	6	23
2000	4386	6	25
2001	5187	6	23
2002	6106	5	20
2003	6977	5	19
2004	7618	5	17
2005	8957	4	14
2006	11116	5	12

Table 10.2: Prevalence of positive HBsAg and positive Anti-HCV at annual survey, CAPD patients 1997-2006

Year	No. of subjects	Prevalence of HBsAg+ (%)	Prevalence of Anti-HCV+ (%)
1997	476	3	5
1998	541	3	6
1999	610	2	5
2000	662	2	5
2001	781	2	3
2002	891	3	4
2003	1223	3	4
2004	1200	4	5
2005	1318	4	5
2006	1489	5	4

Table 10.3: Variation in Proportion of patients with positive HBsAg at annual survey among HD centres, 2006

Year	No. of centres	Min	5 th Centile	LQ	Median	UQ	95 th Centile	Max
1997	44	0	0	2.5	5	9	17	19
1998	50	0	0	0	5	9	18	23
1999	76	0	0	0	4	9.5	19	30
2000	109	0	0	0	4	8	15	80
2001	125	0	0	0	5	9	15	90
2002	156	0	0	0	3	8	14	27
2003	178	0	0	0	3.5	8	15	64
2004	198	0	0	0	3	8	15	100
2005	231	0	0	0	1	6	15	100
2006	283	0	0	0	0	6	16	94

Figure 10.3: Variation in Proportion of patients with positive HBsAg among HD centres, 2006

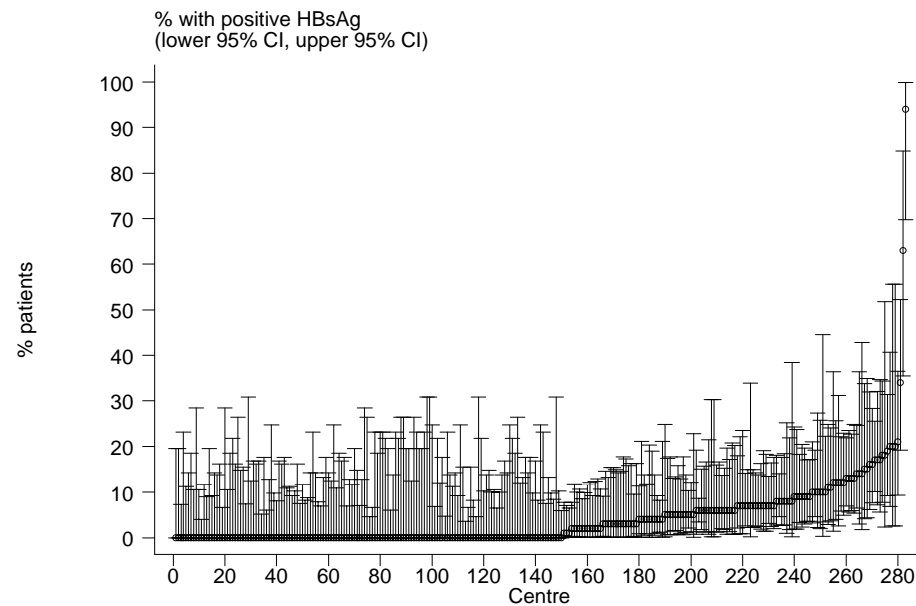


Table 10.4: Variation in Proportion of patients with positive HBsAg at annual survey among CAPD centres, 2006

Year	No. of centres	Min	5 th Centile	LQ	Median	UQ	95 th Centile	Max
1997	7	0	0	0	2	3	8	8
1998	9	0	0	0	1	3	6	6
1999	10	0	0	0	2	2	4	4
2000	11	0	0	0	1	4	5	5
2001	12	0	0	0	2	3	9	9
2002	15	0	0	1	3	6	18	18
2003	19	0	0	1	3	6	8	8
2004	19	0	0	1	3	6	11	11
2005	21	0	0	0	3	5	5	11
2006	23	0	0	0	4	6	9	13

Figure 10.4: Variation in Proportion of patients with positive HBsAg among CAPD centres, 2006

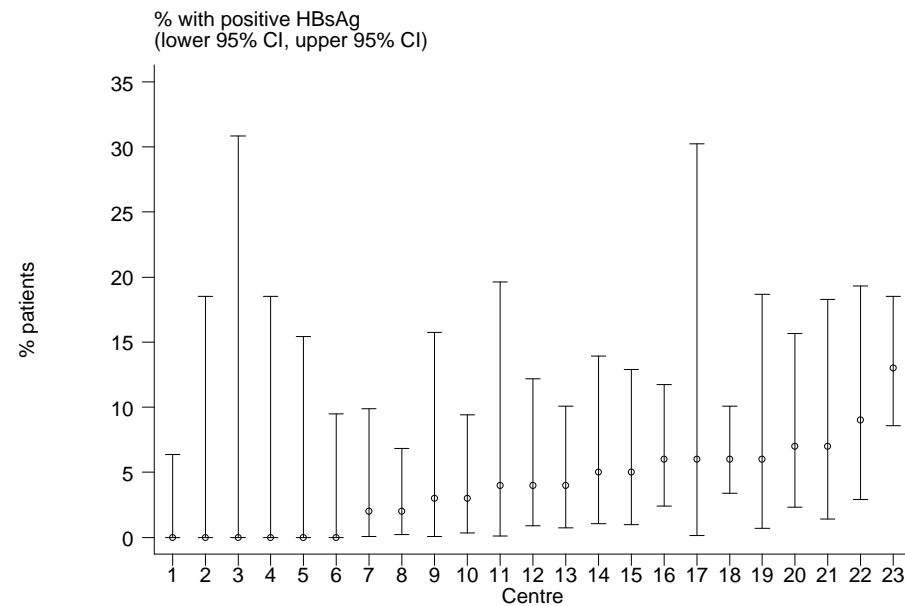


Table 10.5: Variation in Proportion of patients with positive anti-HCV at annual survey among HD centres, 2006

Year	No. of centres	Min	5 th Centile	LQ	Median	UQ	95 th Centile	Max
1997	44	0	0	14.5	21	29	47	63
1998	50	0	0	9	19.5	30	61	79
1999	76	0	0	7	19.5	32.5	60	79
2000	109	0	0	9	18	30	70	91
2001	125	0	0	7	17	30	64	91
2002	156	0	0	5	14	24.5	51	96
2003	178	0	0	5	13	24	50	96
2004	201	0	0	4	11	24	50	100
2005	232	0	0	0	9.5	19	44	98
2006	283	0	0	0	8	17	44	98

Figure 10.5: Variation in Proportion of patients with positive anti-HCV among HD centres, 2006

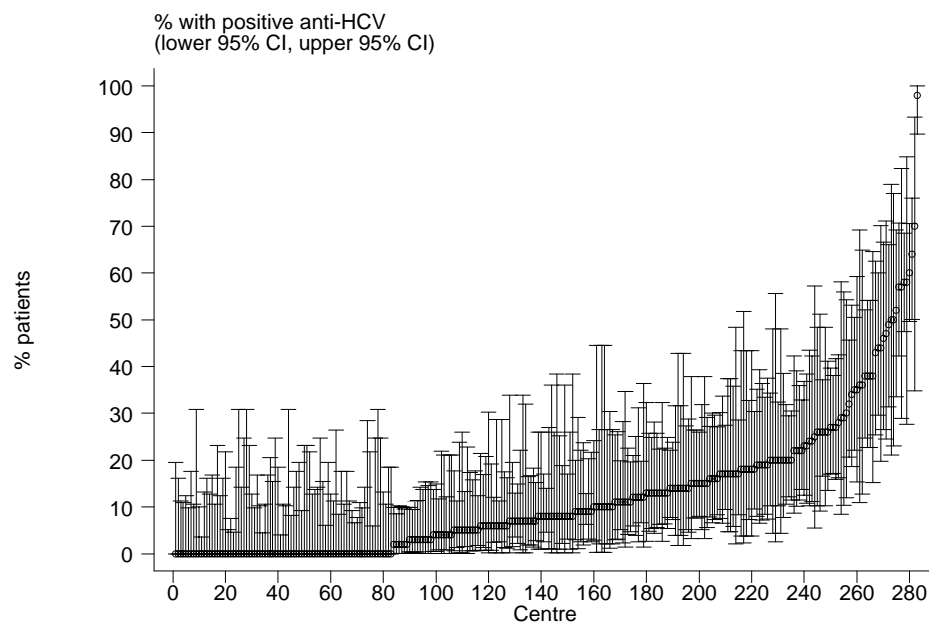


Table 10.6: Variation in Proportion of patients with positive anti-HCV at annual survey among CAPD centres, 2006

Year	No. of centres	Min	5 th Centile	LQ	Median	UQ	95 th Centile	Max
1997	7	0	0	0	6	7	9	9
1998	9	0	0	3	3	8	11	11
1999	10	0	0	3	4	7	14	14
2000	11	0	0	2	3	8	10	10
2001	12	0	0	0	3	4.5	7	7
2002	15	0	0	0	3	8	12	12
2003	19	0	0	1	4	7	9	9
2004	19	0	0	0	4	7	10	10
2005	21	0	0	1	4	8	10	11
2006	23	0	0	1	4	6	8	8

Figure 10.6: Variation in Proportion of patients with positive anti-HCV among CAPD centres, 2006

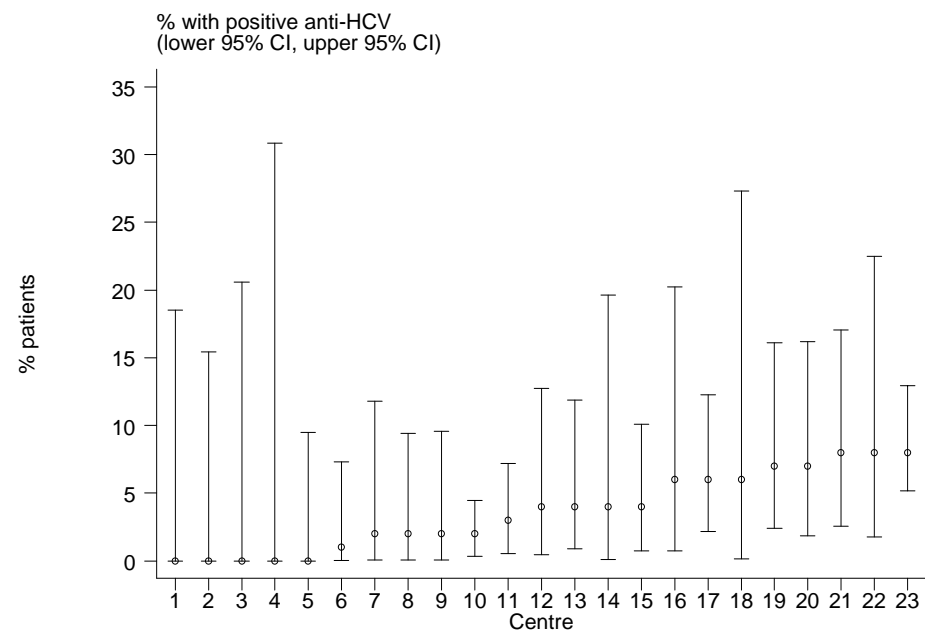


Table 10.7a: Risk factors in relation to HD practices for seroconversion to anti-HCV positive among sero-negative patients

Risk factor	Number of patients	Risk Ratio	95% CI	p-value
Assistance to Perform HD				
(1) Self care ^{ref}	151	1.000		
(2) Partial self care	108	0.701	(0.542 0.908)	0.007
(3) Completely assisted	239	0.469	(0.377 0.583)	0.000
Dialyzer Reuse				
(1) less than 10 ^{ref}	161	1.000		
(2) more than 10	362	0.733	(0.607 0.885)	0.001
Dialyzer Reprocessing System				
(1) Fully Auto ^{ref}	275	1.000		
(2) Semi Auto	29	0.702	(0.478 1.030)	0.070
(3) Manual	29	0.710	(0.484 1.042)	0.081
(4) No Reuse	0	0.000	.	.
Age				
(1) <=20 ^{ref}	29	1.000		
(2) 21-40	189	0.914	(0.619 1.432)	0.778
(3) 41-60	242	0.538	(0.356 0.813)	0.003
(4) >60	63	0.243	(0.154 0.385)	0.000
Gender				
(1)Female ^{ref}	213	1.000		
(2)Male	310	1.168	(0.977 1.395)	0.088
Diabetes				
(1)No ^{ref}	420	1.000		
(2)Yes	103	0.330	(0.267 0.408)	0.000
Previous Renal Transplant				
(1)No ^{ref}	474	1.000		
(2)Yes	49	3.357	(2.426 4.645)	0.000
History of Blood Transfusion				
(1)No ^{ref}	319	1.000		
(2)Yes	204	1.287	(1.075 1.540)	0.006

Table 10.7b: Risk factors for seroconversion to anti-HCV positive among sero-negative patients in CAPD

Risk factor	Number of patients	Risk Ratio	95% CI	p-value
Age				
(1) <=20 ^{ref}	4			
(2) 21-40	8	1.553	(0.474 5.095)	0.46 7
(3) 41-60	8	0.713	(0.213 2.387)	0.58 3
(4) >60	2	0.338	(0.062 1.859)	0.21 3
Gender				
(1)Female ^{ref}	9			
(2)Male	13	1.384	(0.604 3.171)	0.32 3
Diabetes				
(1)No ^{ref}	18			
(2)Yes	4	0.334	(0.113 0.986)	0.04 7
Switched from HD to CAPD				
(1)No ^{ref}	18			
(2)Yes	4	2.215	(0.744 6.591)	0.15 3
Previous Renal Transplant				
(1)No ^{ref}	22			
(2)Yes	1	1.144	(0.152 8.610)	0.89 6
History of Blood Transfusion				
(1)No ^{ref}	11			
(2)Yes	12	2.191	(0.961 4.994)	0.06 2