

CHAPTER 5

Quality of Life and Rehabilitation Outcomes of Dialysis Patients in Malaysia

Liu Wen Jiun
Chew Thian Fook
Alinda Chiu Sze Fung
Zaki Morad b Mohd Zaher

SECTION A : QUALITY OF LIFE (QoL) INDEX SCORE

18754 patients who entered dialysis between 1998-2007 were analysed. 15801 HD patients and 2953 CAPD patients reported median QoL index score of 9 and 10 respectively (Table 5.1, Figure 5.1) Diabetics have a lower median QoL index score (8 versus 10) than nondiabetics (Table 5.2, Figure 5. 2) whilst there was no difference seen between gender (Table 5.3, Figure 5.3). There is a trend of lower median QoL index score being associated with older dialysis patients (Table 5.4, Figure 5.4). There are no obvious trends in QoL index seen either in the HD or CAPD cohort over the last 10 years. (Table 5.5, Table 5.6, Fig 5.5 and Figure 5.6)

Table 5.1: Cumulative distribution of QoL-Index score in relation to Dialysis modality, All Dialysis patients 1998-2007

Dialysis modality	CAPD	HD
Number of patients	2953	15801
Centile		
0	0	0
0.05	5	4
0.1	6	5
0.25 (LQ)	8	7
0.5 (median)	10	9
0.75 (UQ)	10	10
0.9	10	10
0.95	10	10
1	10	10

Figure 5.1: Cumulative distribution of QoL-Index score in relation to Dialysis modality, All Dialysis patients 1998-2007

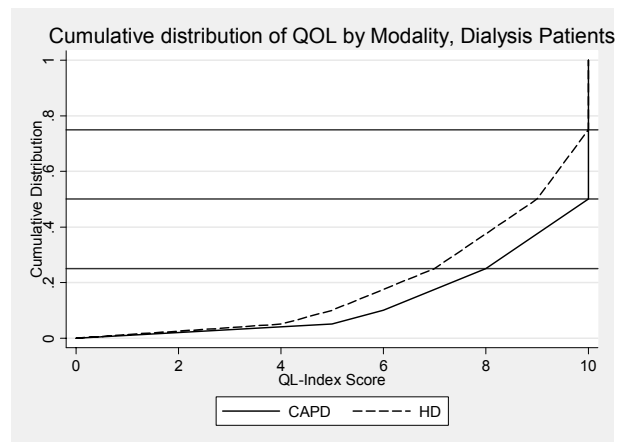


Table 5.2: Cumulative distribution of QoL-Index score in relation to Diabetes mellitus, All Dialysis patients 1998-2007

Diabetes mellitus	No	Yes
Number of patients	9498	9256
Centile		
0	0	0
0.05	5	4
0.1	7	5
0.25 (LQ)	9	6
0.5 (median)	10	8
0.75 (UQ)	10	10
0.9	10	10
0.95	10	10
1	10	10

Figure 5.2: Cumulative distribution of QoL-Index score in relation to Diabetes mellitus, All Dialysis patients 1998-2007

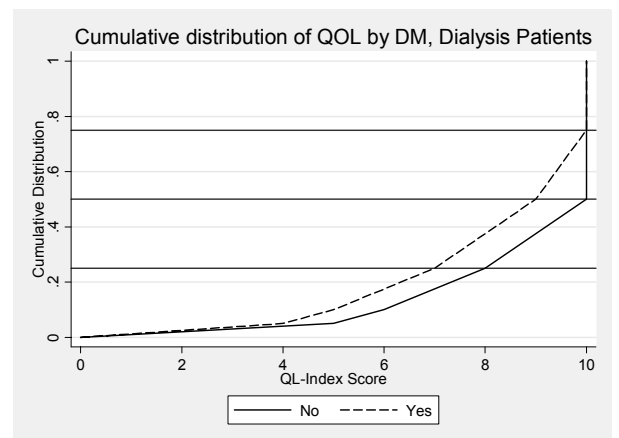


Table 5.3: Cumulative distribution of QoL-Index score in relation to Gender, All Dialysis patients 1998-2007

Gender	Male	Female
Number of patients	10366	8388
Centile		
0	0	0
0.05	5	4
0.1	6	5
0.25 (LQ)	7	7
0.5 (median)	9	9
0.75 (UQ)	10	10
0.9	10	10
0.95	10	10
1	10	10

Figure 5.3: Cumulative distribution of QoL-Index score in relation to Gender, All Dialysis patients 1998-2007

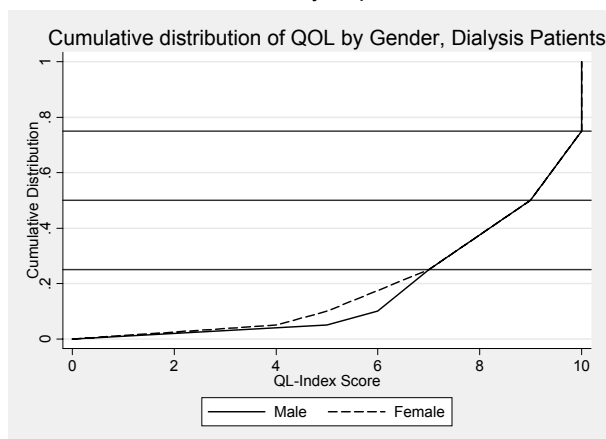


Table 5.4: Cumulative distribution of QoL-Index score in relation to Age, All Dialysis patients 1998-2007

Age group	<20	20-39	40-59	>=60
Number of patients	723	3183	8976	5872
Centile				
0	0	0	0	0
0.05	6	6	5	4
0.1	8	8	6	5
0.25 (LQ)	9	9	8	6
0.5 (median)	10	10	9	8
0.75 (UQ)	10	10	10	9
0.9	10	10	10	10
0.95	10	10	10	10
1	10	10	10	10

Figure 5.4: Cumulative distribution of QoL-Index score in relation to Age, All Dialysis patients 1998-2007

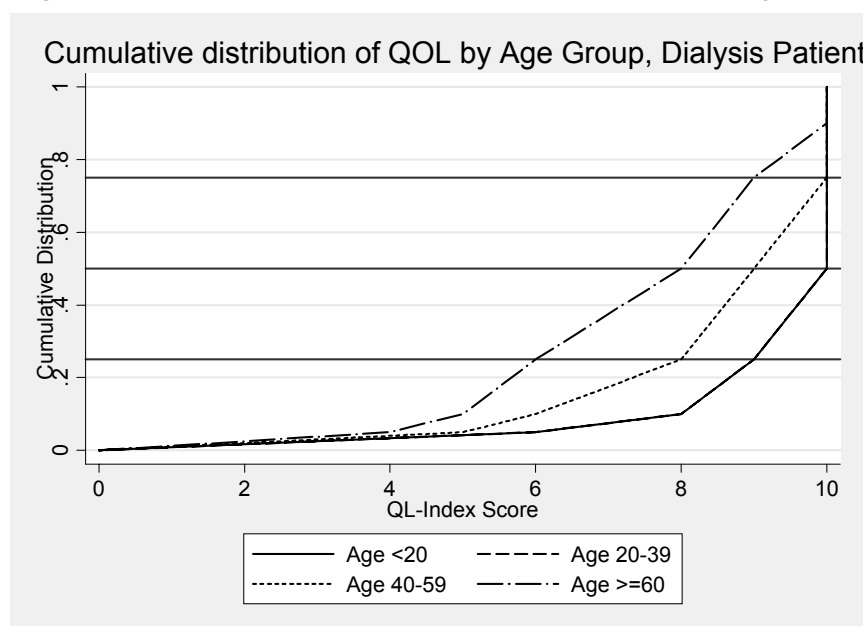


Table 5.5: Cumulative distribution of QoL-Index score in relation to Year of entry, HD patients 1998-2007

Year of Entry	1998	1999	2000	2001	2002	2003	2004	2005	2006	2007
Number of patients	834	1033	1262	1419	1619	1673	1968	2046	2272	1675
Centile										
0	0	0	0	0	0	0	0	0	0	0
0.05	5	5	5	5	4	5	4	4	4	4
0.1	6	6	6	5	5	5	5	5	5	5
0.25 (LQ)	8	7	7	7	7	7	7	7	7	7
0.5 (median)	9	9	9	9	9	9	9	9	9	9
0.75 (UQ)	10	10	10	10	10	10	10	10	10	10
0.9	10	10	10	10	10	10	10	10	10	10
0.95	10	10	10	10	10	10	10	10	10	10
1	10	10	10	10	10	10	10	10	10	10

Figure 5.5: Cumulative distribution of QoL-Index score in relation to Year of entry, HD patients 1998-2007

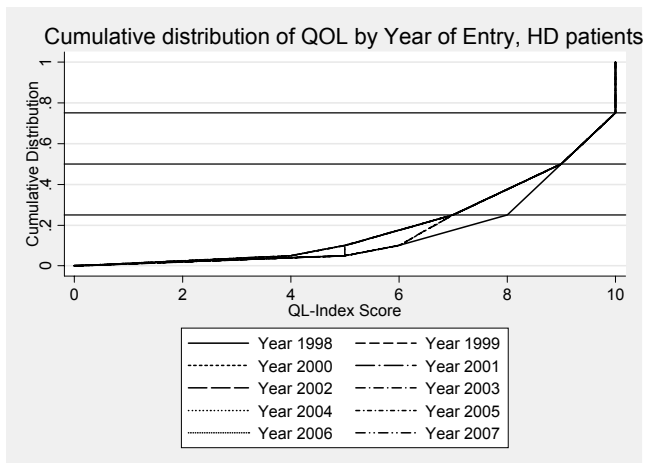


Figure 5.6: Cumulative distribution of QoL-Index score in relation to Year of entry, CAPD patients 1998-2007

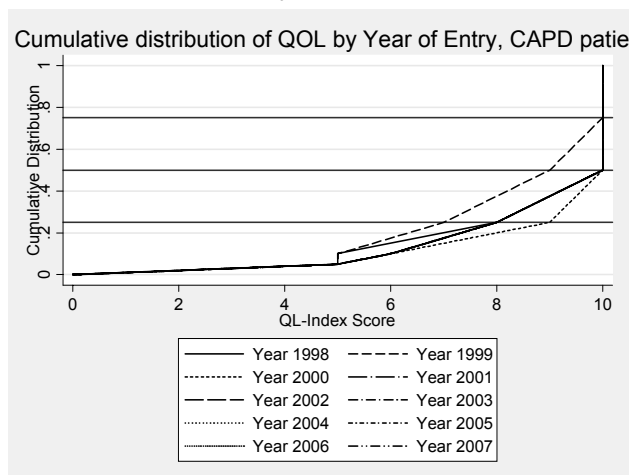


Table 5.6: Cumulative distribution of QoL-Index score in relation to Year of entry, CAPD patients 1998-2007

Year of Entry	1998	1999	2000	2001	2002	2003	2004	2005	2006	2007
Number of patients	117	167	188	269	319	368	307	319	423	476
Centile										
0	0	0	0	0	0	0	0	0	0	0
0.05	5	5	5	5	5	5	5	5	5	5
0.1	5	5	6	6	6	6	6	6	6	6
0.25 (LQ)	8	7	9	8	8	8	8	8	8	8
0.5 (median)	10	9	10	10	10	10	10	10	10	10
0.75 (UQ)	10	10	10	10	10	10	10	10	10	10
0.9	10	10	10	10	10	10	10	10	10	10
0.95	10	10	10	10	10	10	10	10	10	10
1	10	10	10	10	10	10	10	10	10	10

SECTION B: WORK RELATED REHABILITATION

Analysis was done on HD patients (n=6335) and CAPD patients (n=968) who entered dialysis between 1998 –2007, (Table 5.7). Only patients who are working for pay and those who are unable to work for pay due to health reasons are included. The proportion of patients on employment are similar in both modalities (HD = 71% vs CAPD 72%)

Amongst HD as well as CAPD patients, the proportion on employment increases with longer duration on dialysis. (Table 5.8 and Table 5.9) This may be confounded by the healthier individuals who survived longer in the earlier cohort and therefore spuriously increased the proportion on employment.

Table 5.7: Work related rehabilitation in relation to Modality, Dialysis patients 1998-2007

Modality	CAPD		HD	
	N	%	N	%
Number of patients	968		6335	
Able to return for Full or Part time for pay*	693	72	4469	71
Unable to work for pay	275	28	1866	29

* Exclude patients unable to find employment for non-health related reasons

Table 5.8: Work related rehabilitation in relation to Year of Entry, HD patients 1998-2007

Year	1998	1997	2000	2001	2002	2003	2004	2005	2006	2007
Number of patients	429	525	581	586	666	680	757	736	815	560
Able to return for Full or Part time for pay*	No 80	No 76	No 77	No 72	No 73	No 71	No 68	No 69	No 65	No 59
Unable to work for pay	No 84	No 127	No 135	No 163	No 177	No 197	No 242	No 231	No 283	No 227
	% 20	% 24	% 23	% 28	% 27	% 29	% 32	% 31	% 35	% 41

* Exclude patients unable to find employment for non-health related reasons

Table 5.9: Work related rehabilitation in relation to Year of Entry, CAPD patients 1998-2007

Year	1998	1999	2000	2001	2002	2003	2004	2005	2006	2007
Number of patients	39	48	63	84	119	138	101	111	135	130
Able to return for Full or Part time for pay*	No 31	No 35	No 42	No 67	No 90	No 106	No 72	No 79	No 90	No 81
Unable to work for pay	No 8	No 13	No 21	No 17	No 29	No 32	No 29	No 32	No 45	No 49
	% 21	% 27	% 33	% 20	% 24	% 23	% 29	% 29	% 33	% 38

* Exclude patients unable to find employment for non-health related reasons