

# **Chapter 9**

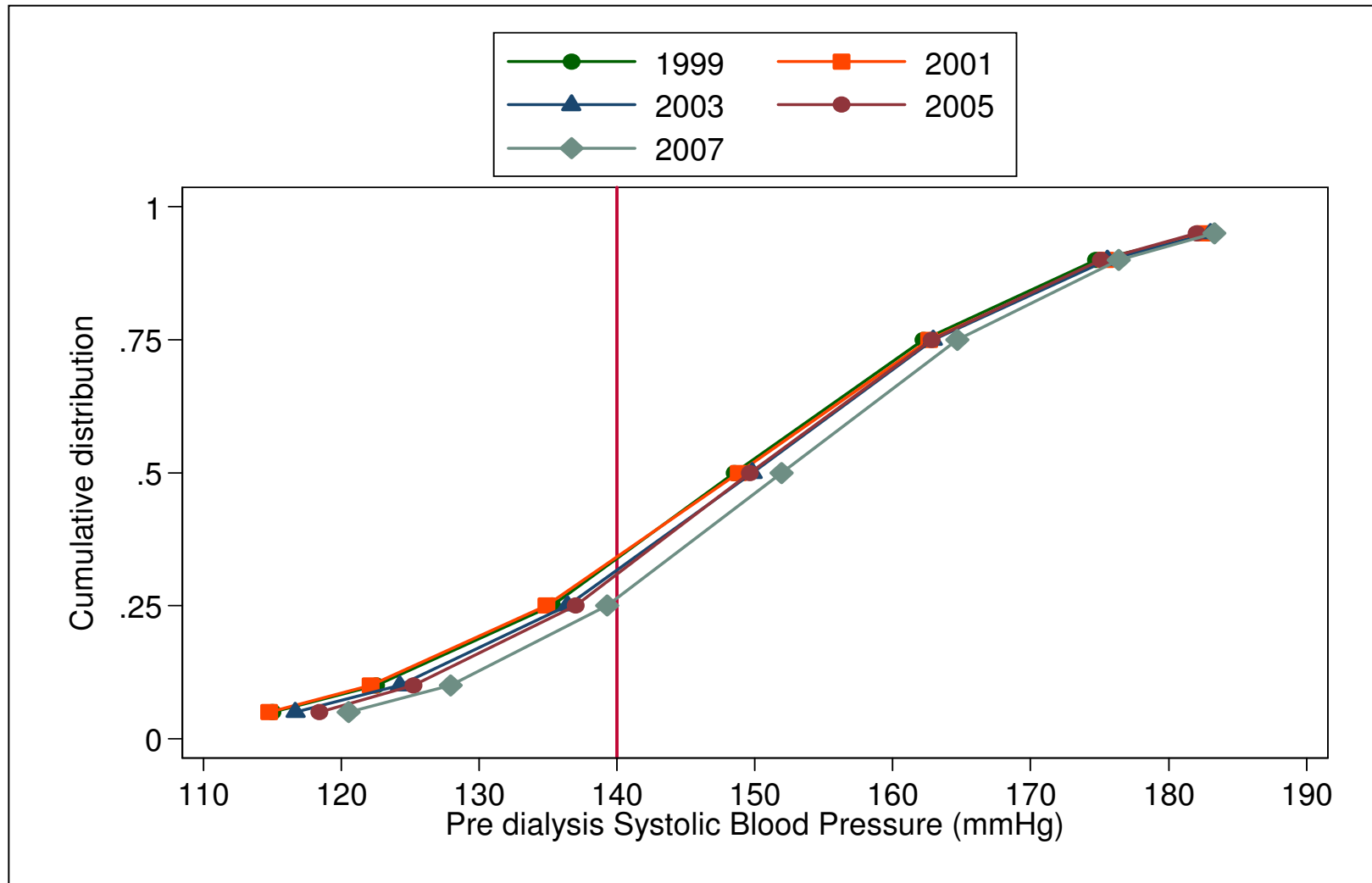
## **Blood Pressure Control and Dyslipidaemia in Dialysis Patients**

S. Prasad Menon  
Lee Wan Tin

**Table 9.1.1: Distribution of Pre dialysis Systolic Blood Pressure, HD patients 1998-2007**

Year	No of subjects	mean	SD	Median	LQ	UQ	% patients <120 mmHg	% patients 120- <140 mmHg	% patients 140- <160 mmHg	% patients 160- <180 mmHg	% patients $\geq$ 180 mmHg
1998	2108	146	20.5	146.7	133.2	159.2	10	27	39	19	5
1999	2965	148.7	20.8	148.5	135.3	162.2	8	25	38	23	6
2000	4310	148	20.6	147.8	134.8	161.7	9	25	38	23	6
2001	5147	148.8	20.9	148.8	134.9	162.6	8	25	37	23	7
2002	5911	149.2	20.6	149	135.8	163.3	8	24	38	24	6
2003	6833	149.7	20.2	149.8	136.4	162.9	7	24	39	23	7
2004	7936	149.7	20	150	136.6	163.1	7	23	39	25	6
2005	9221	149.9	19.4	149.6	137	162.8	6	24	40	24	6
2006	11526	151.4	19.3	151.1	138.8	164	5	22	41	25	7
2007	12812	152.1	19.1	151.9	139.3	164.7	5	21	40	27	7

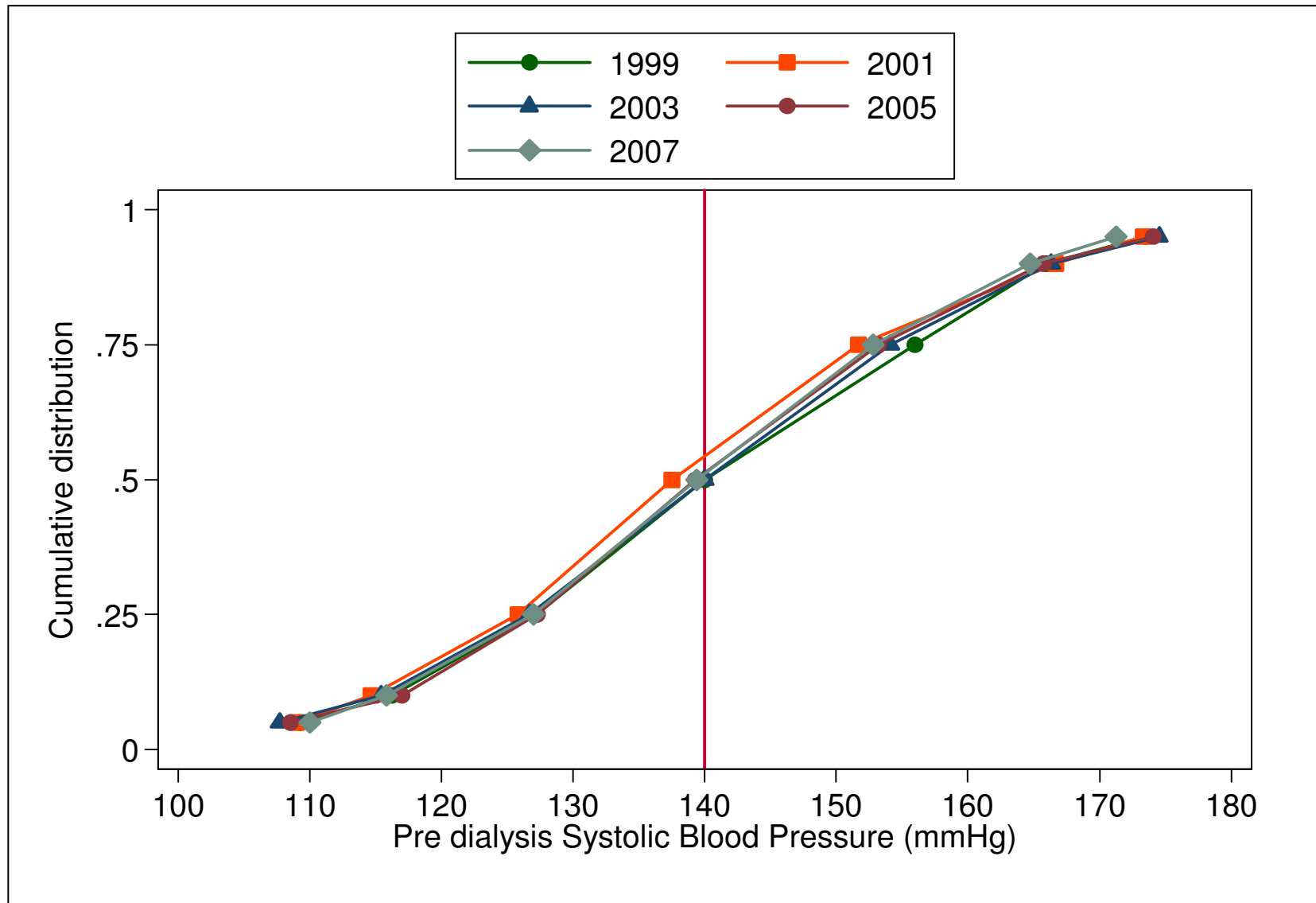
Figure 9.1.1: Cumulative distribution of Pre dialysis Systolic Blood Pressure, HD patients 1998-2007



**Table 9.1.2: : Distribution of Pre dialysis Systolic Blood Pressure, CAPD patients 1998-2007**

Year	No of subjects	mean	SD	Median	LQ	UQ	% patients <120 mmHg	% patients 120-<140 mmHg	% patients 140-<160 mmHg	% patients 160-<180 mmHg	% patients ≥180 mmHg
1998	519	141	21.2	140	126.4	157.5	16	34	29	18	3
1999	576	141	19.8	140	127.2	156	14	35	34	15	2
2000	638	137.2	20.4	136.1	123.3	150	18	39	29	13	2
2001	739	139	20.2	137.5	125.8	151.7	16	38	30	13	3
2002	843	139.8	20.5	140	127.1	151.8	14	36	34	12	4
2003	1154	140.5	20.1	140	126.7	154.1	15	35	32	15	3
2004	1259	141	19.8	140.9	127.4	154.5	13	34	36	14	3
2005	1351	140.4	20.2	139.3	127.3	153.2	13	38	32	14	3
2006	1523	139.3	19.3	138.4	126.7	151.6	14	40	32	11	2
2007	1753	139.9	19.2	139.4	127	152.8	15	37	33	13	2

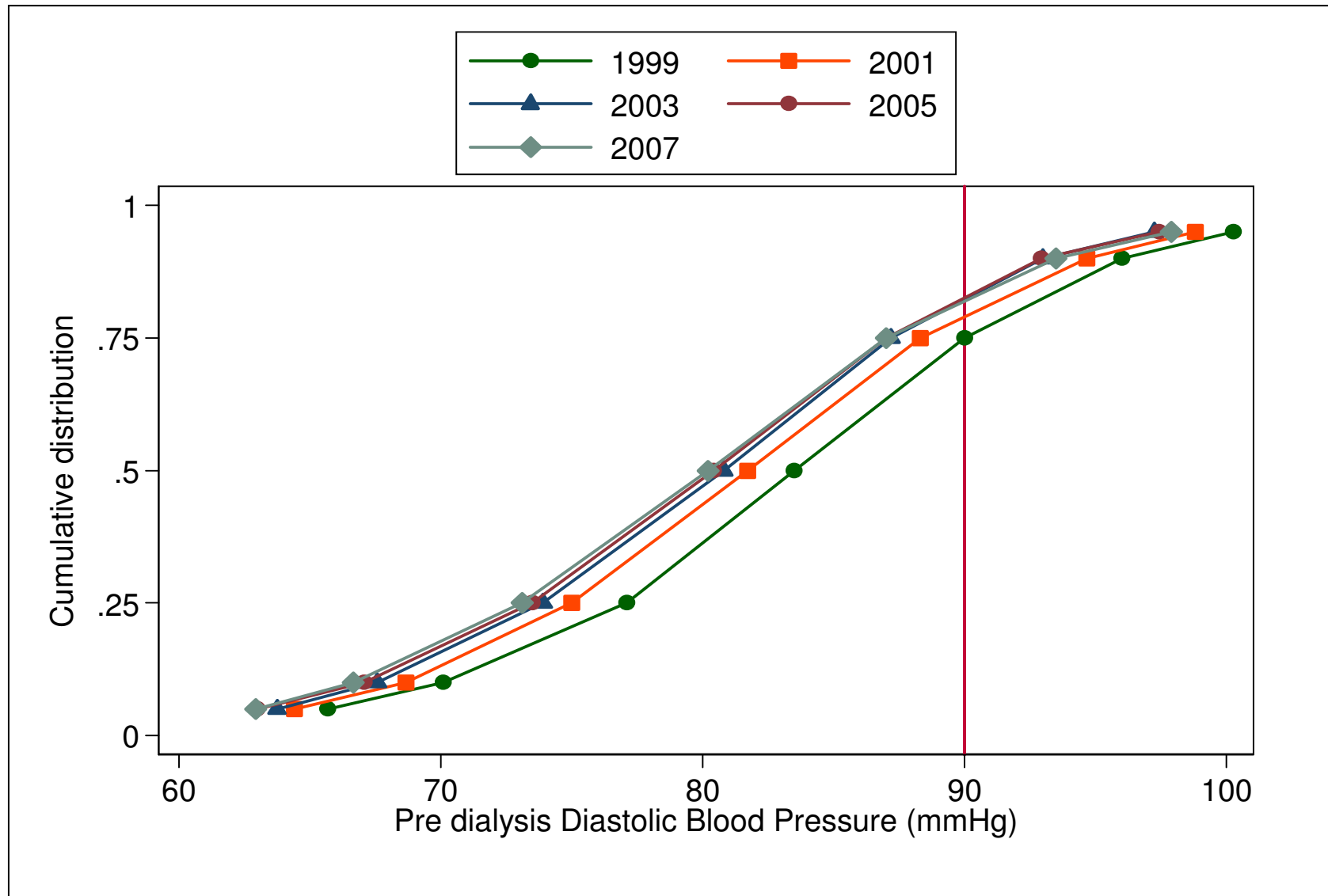
Figure 9.1.2: Distribution of Pre dialysis Systolic Blood Pressure , CAPD patients 1998-2007



**Table 9.1.3: Distribution of Pre dialysis Diastolic Blood Pressure, HD patients 1998-2007**

Year	No of subjects	mean	SD	Median	LQ	UQ	% patients < 70 mmHg	% patients 70-<80 mmHg	% patients 80-<90 mmHg	% patients 90-<100 mmHg	% patients ≥100 mmHg
1998	2108	83.5	10.7	83.9	76.9	90.6	10	24	38	23	5
1999	2965	83.5	10.5	83.5	77.1	90	10	24	40	21	6
2000	4309	82.2	10.4	82.3	75.7	89	11	28	39	18	4
2001	5146	81.6	10.4	81.7	75	88.3	12	30	37	17	4
2002	5907	81.2	10.4	81.3	74.5	88.1	13	30	37	16	3
2003	6831	80.6	10.2	80.8	73.9	87.2	14	32	37	14	3
2004	7934	80.3	10.2	80.3	73.6	86.9	15	33	36	14	3
2005	9221	80.3	10.6	80.4	73.5	87	15	32	36	14	3
2006	11525	80.4	11.1	80.4	73.3	87.1	16	32	35	14	3
2007	12812	80.4	11.1	80.2	73.1	87	16	32	34	14	4

Figure 9.1.3: Cumulative distribution of Pre dialysis Diastolic Blood Pressure, HD patients 1998-2007

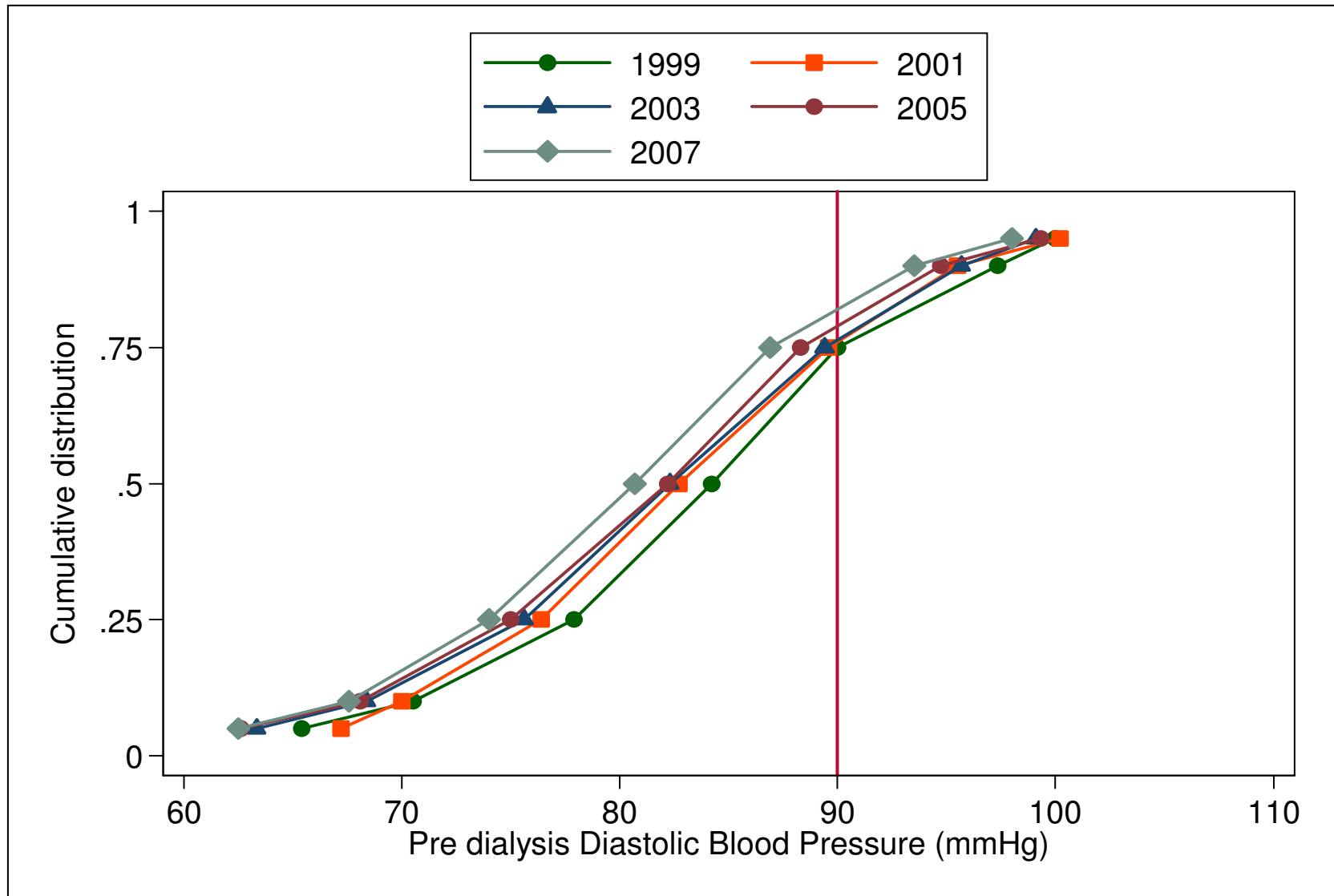


**Table 9.1.4: Distribution of Pre dialysis Diastolic Blood Pressure, CAPD patients 1998-2007**

Year	No of subjects	mean	SD	Median	LQ	UQ	% patients <70 mmHg	% patients 70-<80 mmHg	% patients 80-<90 mmHg	% patients 90-<100 mmHg	% patients ≥100 mmHg
1998	519	84.3	11.3	85	77.1	90.1	8	24	36	24	8
1999	576	84	10.9	84.2	77.9	90	9	20	44	20	7
2000	638	82.9	11	83.3	76.6	89.6	10	24	41	20	5
2001	739	83.1	10.9	82.7	76.4	89.6	9	29	38	18	6
2002	843	82.8	10.8	83.4	76.1	90	11	24	41	21	5
2003	1156	82.2	10.9	82.3	75.6	89.4	12	26	38	19	4
2004	1258	82.2	10.5	83	75.4	89.2	11	28	38	18	4
2005	1351	81.6	10.9	82.2	75	88.3	12	29	40	15	5
2006	1522	81.3	10.6	81.5	74.8	88	13	28	40	15	3
2007	1752	80.6	10.7	80.7	74	86.9	14	32	38	12	3



Figure 9.1.4: Cumulative distribution of Pre dialysis Diastolic Blood Pressure, CAPD patients 1998-2007

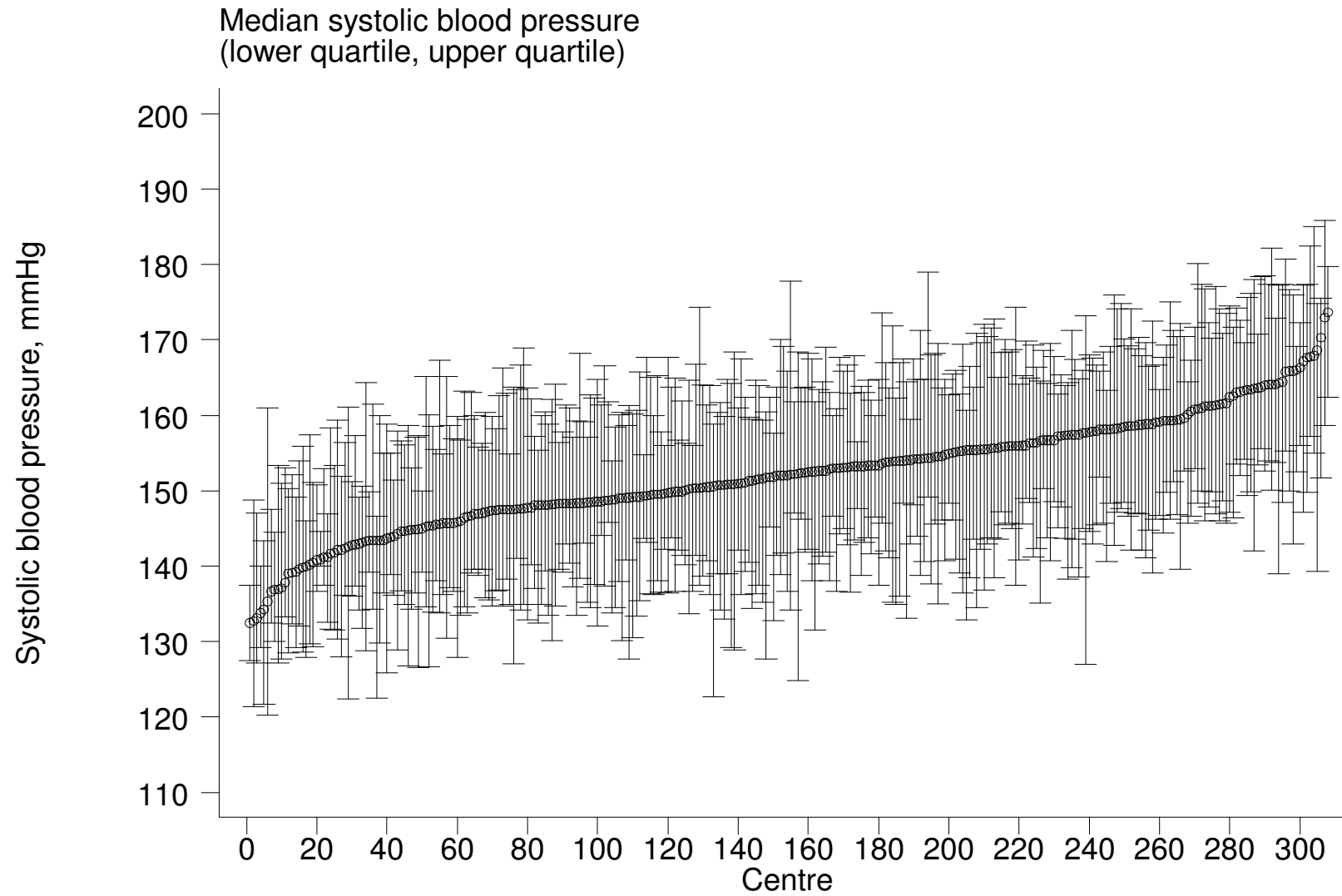


**Table 9.1.5: Variation in BP control among HD centers 2007**

(a) Median Systolic blood pressure among HD patients, HD centres

Year	No. of centres	Min	5 <sup>th</sup> Centile	LQ	Median	UQ	95 <sup>th</sup> Centile	Max
1998	48	131.8	135	141.5	146.3	150.9	158.2	159.9
1999	74	134.2	135.8	144	148.5	154.5	163.4	167.3
2000	107	130.6	136.6	142.5	148	155.1	163.2	181
2001	124	127.5	135.4	143.3	149.3	155	161.9	180.5
2002	152	126.7	137.1	144.2	149.2	154.6	162.5	174.3
2003	176	126.7	135.8	144.9	150.6	155.2	161.8	173.7
2004	207	120	137.7	145.2	150	155	162.4	168.1
2005	236	119.6	136.7	144.1	150.1	155.4	161.3	171.8
2006	290	125.3	137.5	146.4	150.8	156.6	163.6	179
2007	308	132.5	139.8	147.5	152	157.2	164.1	173.7

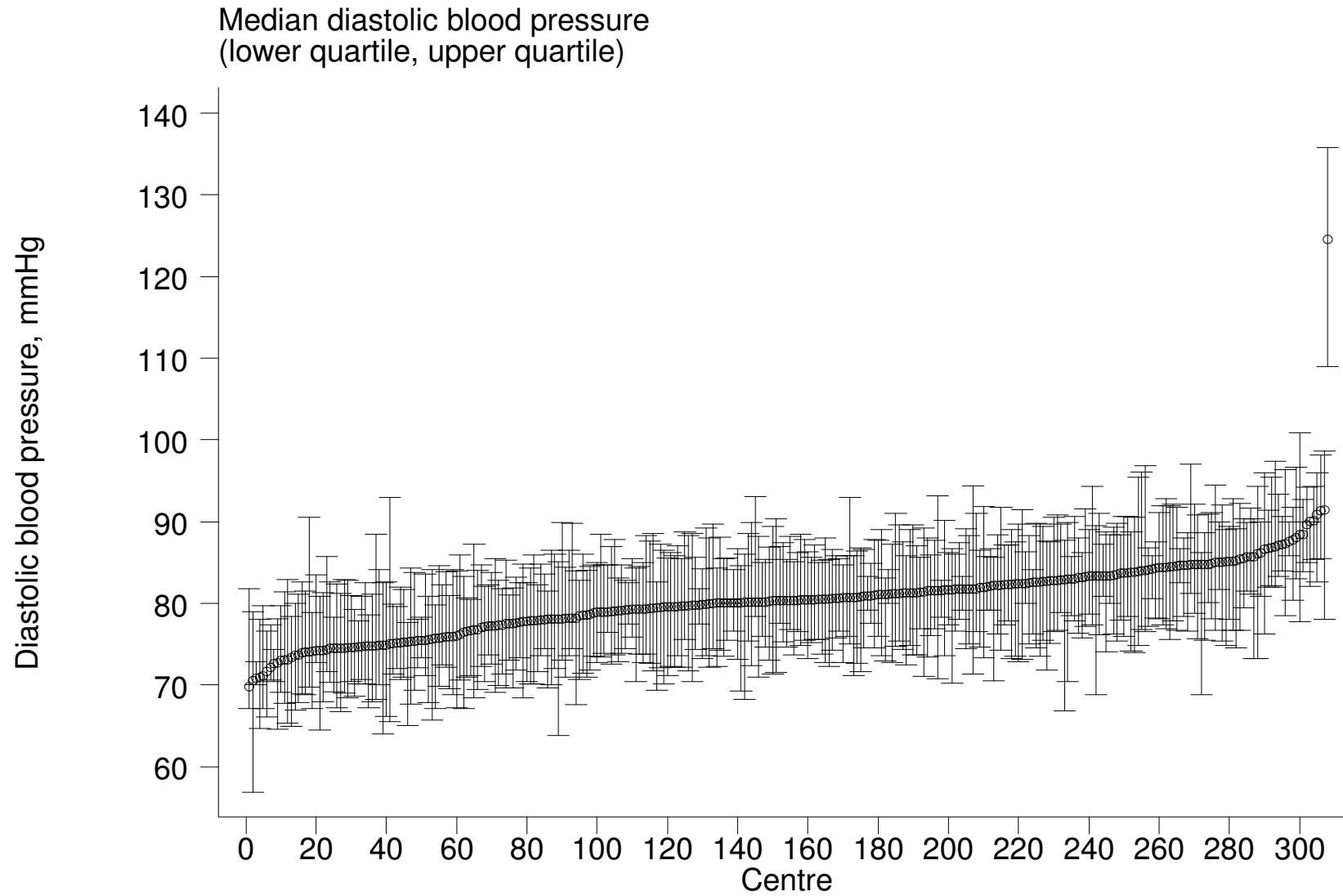
Figure 9.1.5(a): Variation in median systolic blood pressure among HD patients, HD centers 2007



**Table 9.1.5(b): Median Diastolic blood pressure among HD patients**

Year	No of centers	Min	5 <sup>th</sup> centile	LQ	Median	UQ	95 <sup>th</sup> centile	Max
1998	48	77.1	78.6	81.9	83.8	85.9	88.5	90
1999	74	70.9	77.3	81.7	83.6	85.9	89.2	91.8
2000	107	75.2	76.8	80	82.3	85	90	96
2001	124	73.9	75.9	79.8	82	84	87.5	91.3
2002	152	72.3	75.8	79.5	81.3	83.6	87.5	102
2003	176	73.3	75	78.4	80.9	83.6	87	97.5
2004	207	70.4	74	78.2	80.8	82.7	86.5	89.2
2005	236	69.7	73.1	77.9	80.5	82.8	87.1	90.6
2006	290	67.3	74.4	78	80.6	83	87.3	113.5
2007	308	69.8	73.9	77.6	80.3	82.8	86.8	124.5

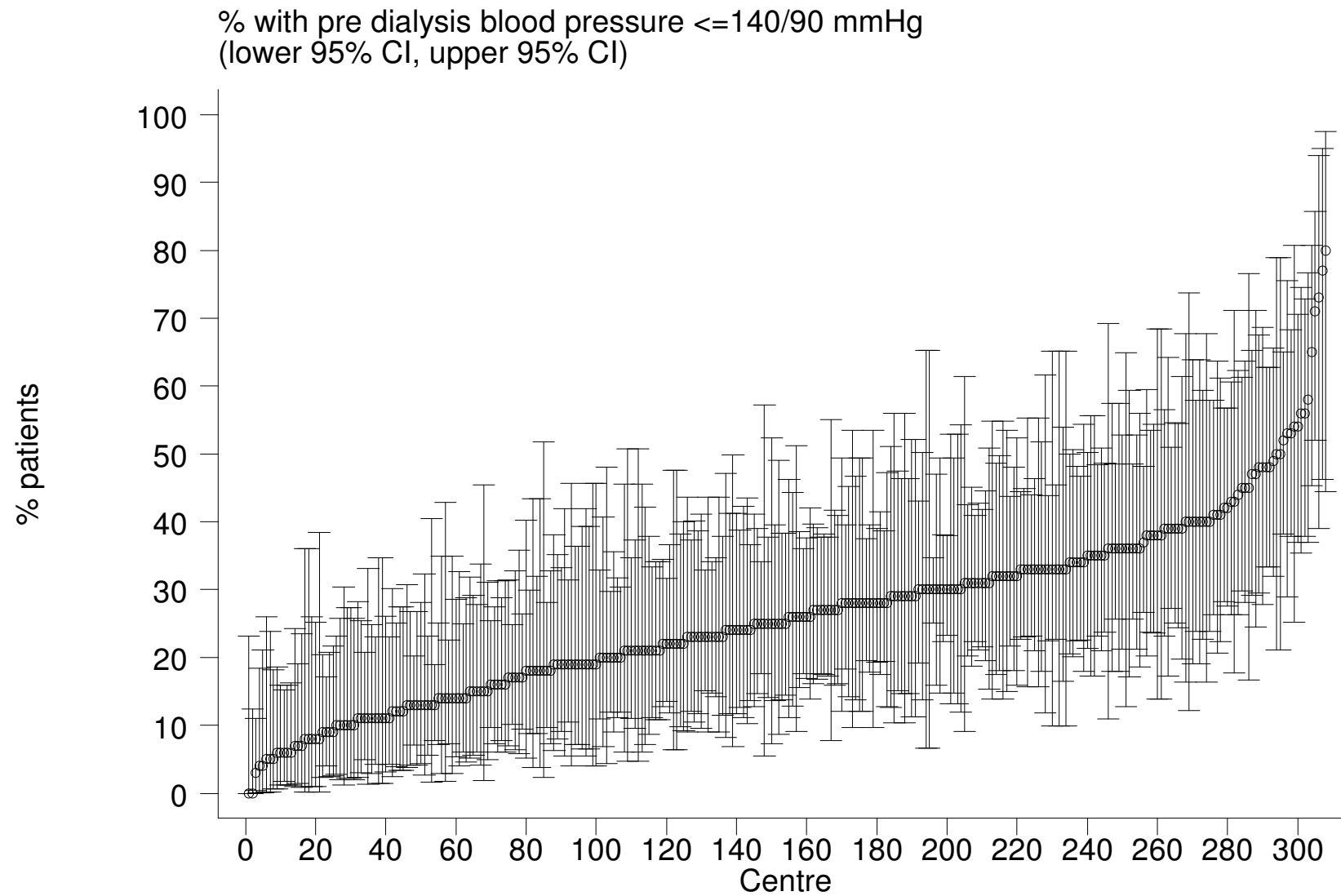
Figure 9.1.5(b): Variation in median diastolic blood pressure among HD patients, HD centers 2007



**Table 9.1.5(c): Proportion of HD patients with Pre dialysis Blood Pressure  $\leq$  140/90 mmHg, HD centres**

Year	No of centers	Min	5 <sup>th</sup> centile	LQ	Median	UQ	95 <sup>th</sup> centile	Max
1998	48	9	20	27	35	41.5	54	72
1999	74	4	11	23	32	41	56	67
2000	107	0	12	22	32	43	63	83
2001	124	0	11	20.5	30	43	61	69
2002	152	0	10	21	29	39.5	56	71
2003	176	4	8	20	28	39.5	60	80
2004	207	0	10	21	29	38	56	90
2005	236	4	10	21	27	39	57	89
2006	290	0	8	17	25	35	54	70
2007	308	0	7	17	25.5	33	49	80

**Figure 9.1.5(c): Variation in proportion of HD patients with pre dialysis blood pressure  $\leq 140/90$  mmHg, HD centers 2007**



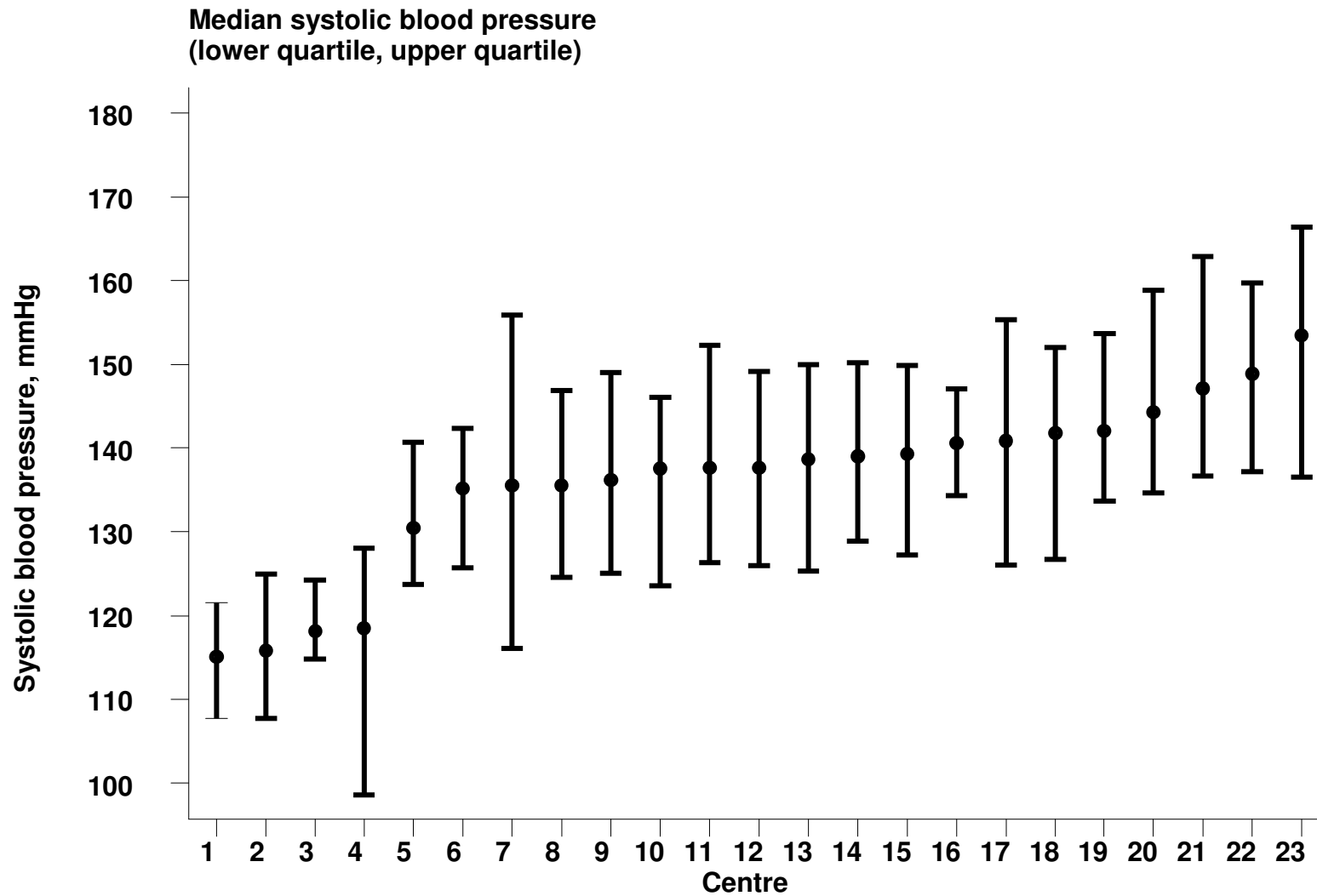
**Table 9.1.6: Variation in BP control among CAPD centers 2007**

(a) Median Systolic blood pressure among CAPD patients

Year	No of centers	Min	5 <sup>th</sup> centile	LQ	Median	UQ	95 <sup>th</sup> centile	Max
1998	9	110.3	110.3	135	138.6	140.8	147.5	147.5
1999	9	116.7	116.7	132.5	137.8	140	152.8	152.8
2000	11	115.5	115.5	131.3	134.9	137.7	149.1	149.1
2001	11	119.3	119.3	130.7	137.5	138.8	149	149
2002	15	124.1	124.1	134.5	140	144.5	148.2	148.2
2003	19	124.5	124.5	131.9	142	144.3	151.8	151.8
2004	19	117.3	117.3	131.7	139	144.3	149.7	149.7
2005	20	116.9	119.7	134	136.7	140	152.8	158
2006	22	113.3	118.3	131.3	136.4	140.4	146	154.9
2007	23	115.1	115.8	135.2	137.7	141.8	148.9	153.5



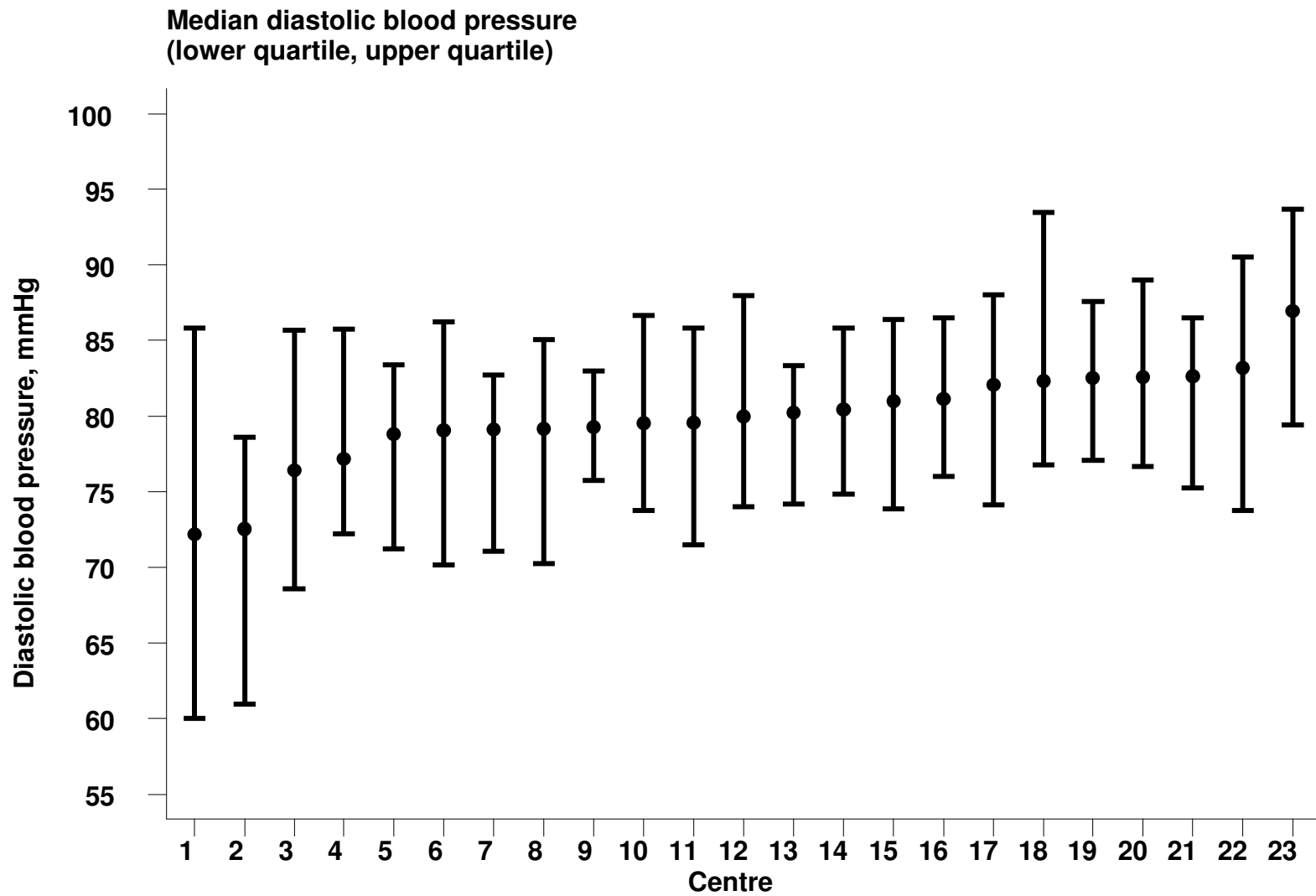
Figure 9.1.6(a): Variation in median systolic blood pressure among CAPD patients, CAPD centers 2007



**Table 9.1.6(b): Median Diastolic blood pressure among CAPD patients**

Year	No of centers	Min	5 <sup>th</sup> centile	LQ	Median	UQ	95 <sup>th</sup> centile	Max
1998	9	75	75	85.2	85.8	86	87	87
1999	9	77.5	77.5	84.1	84.3	85	86.7	86.7
2000	11	73.3	73.3	80	83	84.4	88	88
2001	11	78.7	78.7	80.9	83.4	84.7	88	88
2002	15	78.4	78.4	81.7	83.3	85.7	89.5	89.5
2003	19	77.2	77.2	80.8	82.8	84.4	88	88
2004	19	76.6	76.6	80.5	83.2	84.2	87.5	87.5
2005	20	74.4	75.5	80.3	82.5	84	86.1	86.3
2006	22	71.6	73.2	80.7	81.6	82.5	86.5	88.4
2007	23	72.2	72.5	79.1	80	82.3	83.2	87

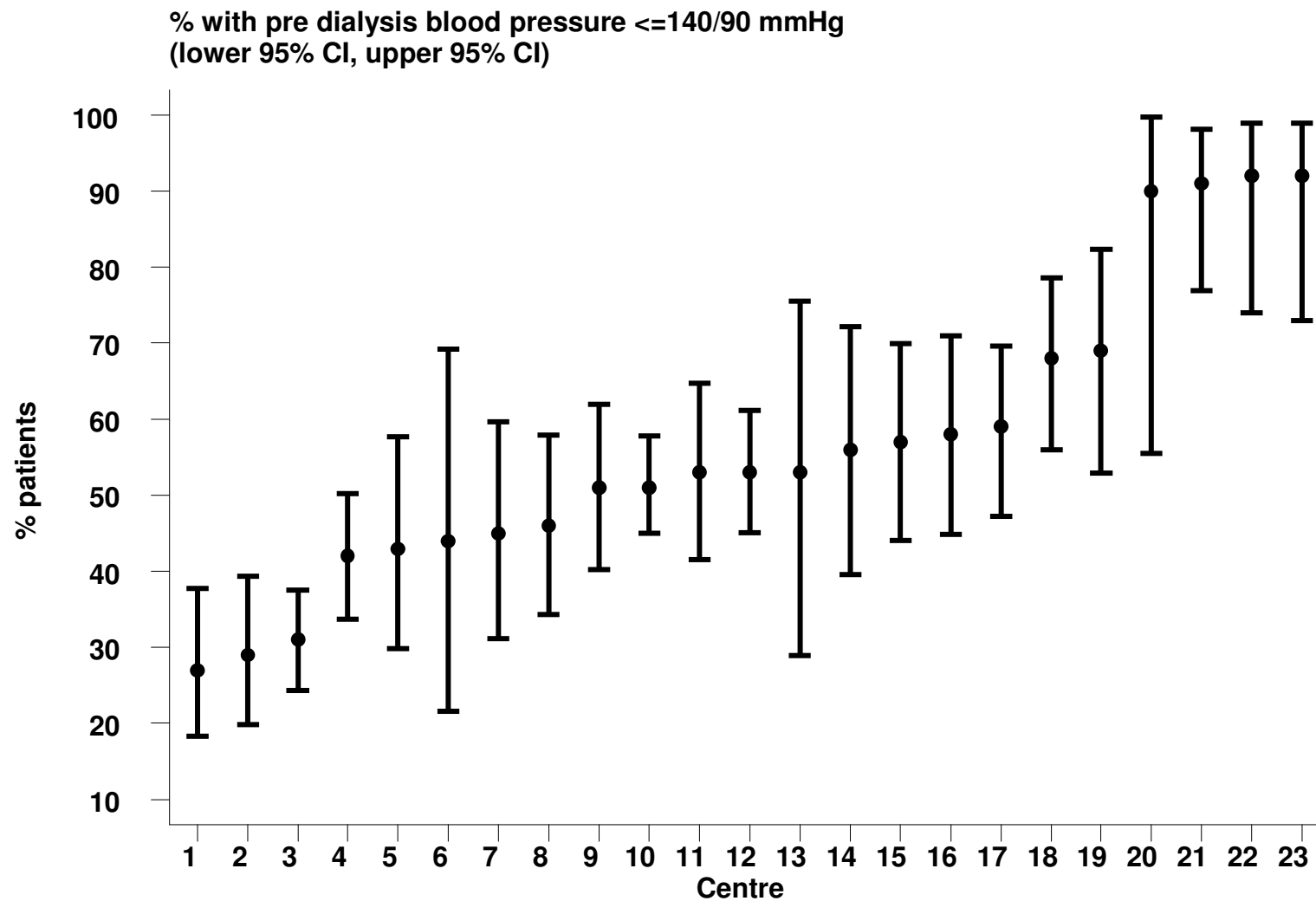
Figure 9.1.6(b): Variation in median diastolic blood pressure among CAPD patients, CAPD centers 2007



**Table 9.1.6(c): Proportion of CAPD patients with Pre dialysis Blood Pressure  $\leq$  140/90 mmHg, CAPD centres**

Year	No of centers	Min	5 <sup>th</sup> centile	LQ	Median	UQ	95 <sup>th</sup> centile	Max
1998	9	36	36	44	47	49	100	100
1999	9	30	30	41	52	60	100	100
2000	11	24	24	53	58	63	91	91
2001	11	36	36	48	52	63	83	83
2002	15	19	19	33	47	56	90	90
2003	19	28	28	39	48	66	90	90
2004	19	29	29	38	49	60	80	80
2005	20	23	26	45.5	55	61	96.5	100
2006	22	18	36	43	58	68	100	100
2007	23	27	29	44	53	68	92	92

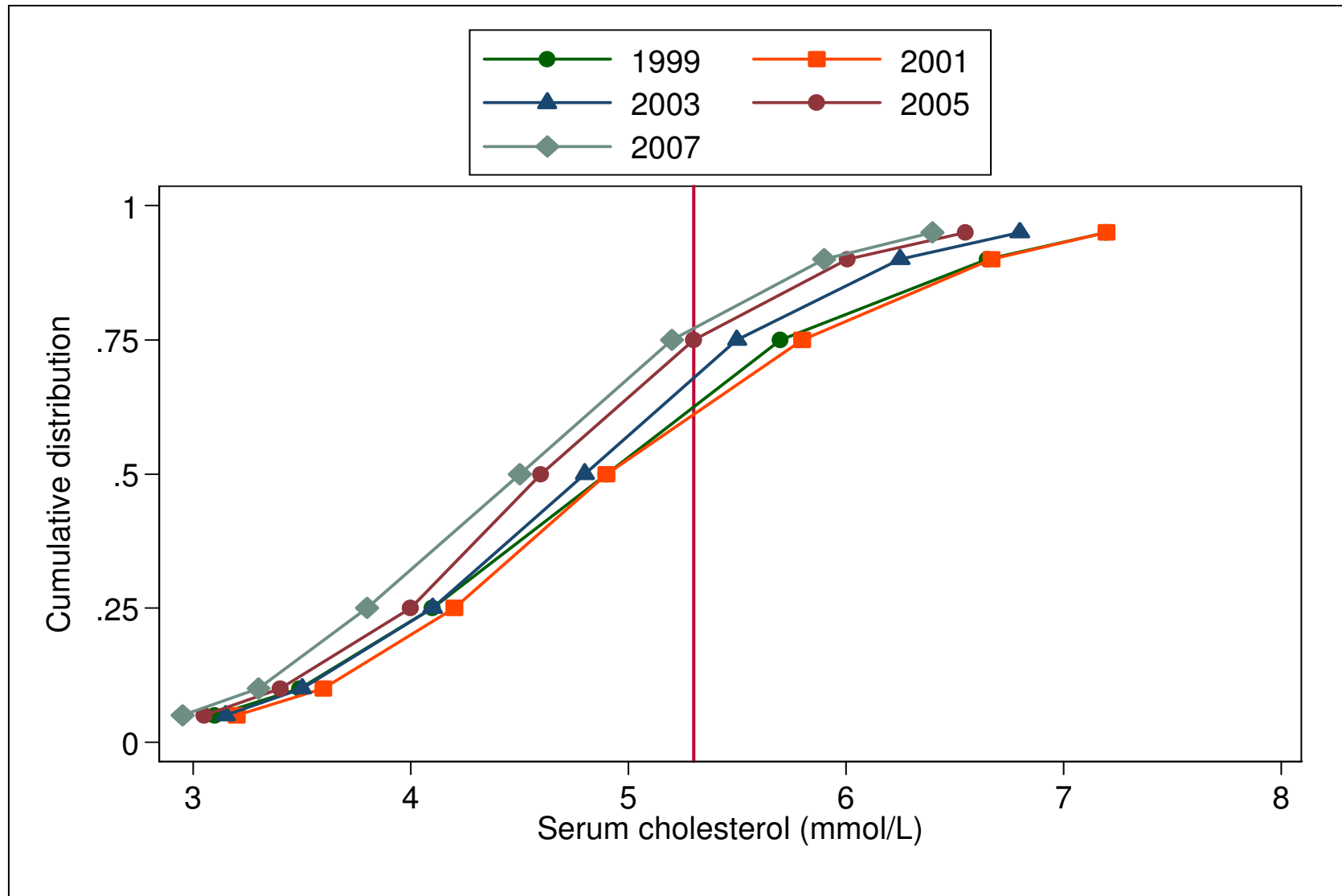
Figure 9.1.6(c): Variation in proportion of CAPD patients with pre dialysis blood pressure  $\leq 140/90$  mmHg, CAPD centers 2006



**Table 9.2.1: Distribution of serum Cholesterol, HD patients 1998-2007**

Year	No of subjects	Mean	SD	Median	LQ	UQ	% patients <3.5 mmol/L	% patients 3.5-<5.3 mmol/L	% patients 5.3-<6.2 mmol/L	% patients $\geq$ 6.2 mmol/L
1998	1166	5.1	1.3	5	4.2	5.8	7	53	22	17
1999	1871	5	1.3	4.9	4.1	5.7	10	54	20	15
2000	2956	5	1.2	4.9	4.2	5.8	8	53	23	16
2001	3898	5.1	1.3	4.9	4.2	5.8	8	52	24	16
2002	4751	5	1.2	4.9	4.2	5.7	9	55	24	13
2003	5805	4.8	1.1	4.8	4.1	5.5	9	59	21	11
2004	6709	4.7	1.1	4.7	4	5.4	11	60	21	8
2005	7906	4.7	1.1	4.6	4	5.3	12	61	19	8
2006	10139	4.6	1.1	4.6	3.9	5.3	14	62	17	7
2007	11331	4.6	1.1	4.5	3.8	5.2	14	63	17	6

Figure 9.2.1: Cumulative distribution of Cholesterol, HD patients 1998-2007

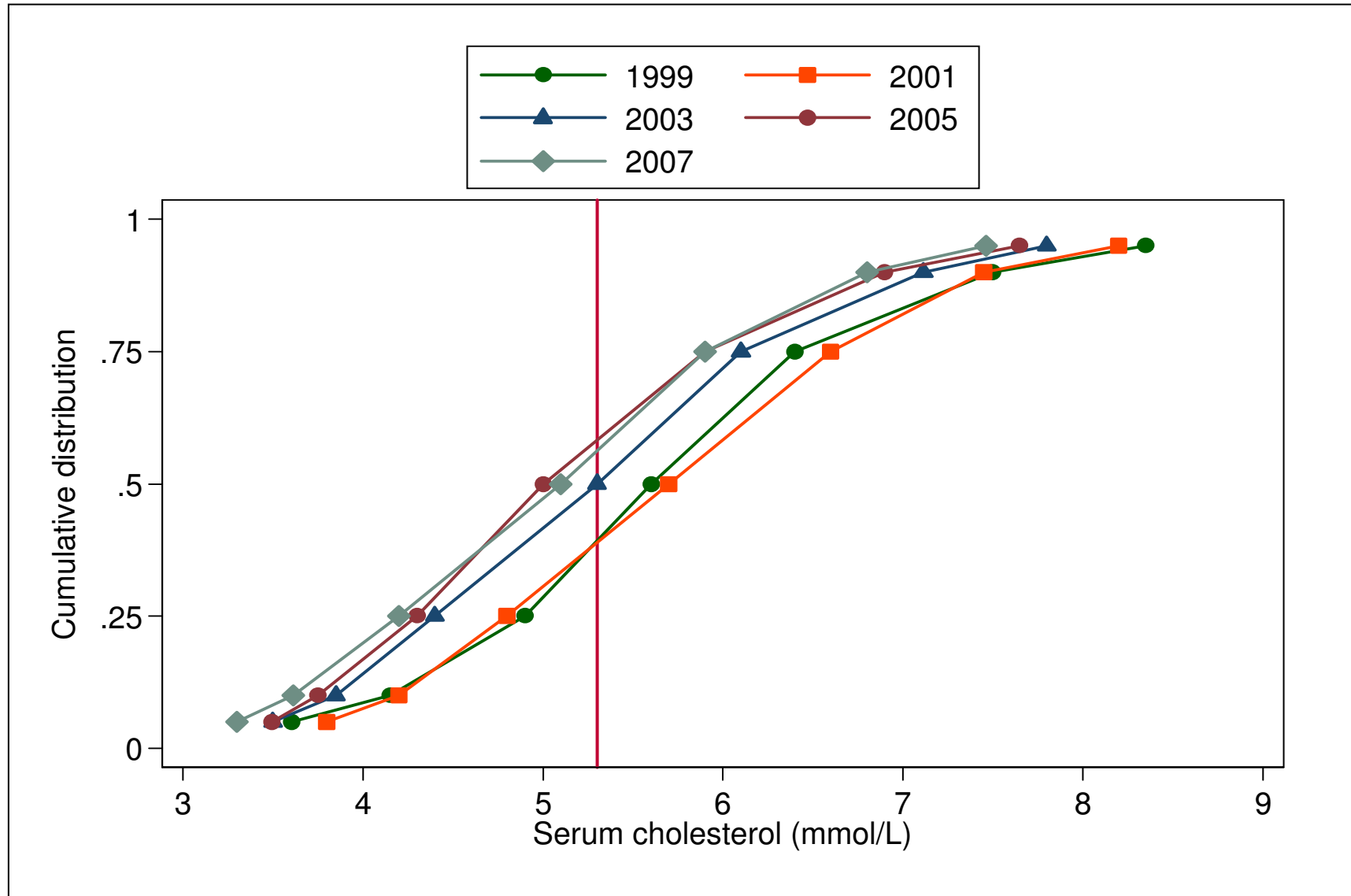


**Table 9.2.2: Distribution of serum Cholesterol, CAPD patients 1998-2007**

Year	No of subjects	Mean	SD	Median	LQ	UQ	% patients <3.5 mmol/L	% patients 3.5-<5.3 mmol/L	% patients 5.3-<6.2 mmol/L	% patients ≥ 6.2 mmol/L
1998	348	6	1.4	5.9	5	6.8	3	29	28	41
1999	434	5.7	1.4	5.6	4.9	6.4	3	37	30	31
2000	526	5.9	1.6	5.7	4.9	6.7	3	31	30	36
2001	581	5.8	1.4	5.7	4.8	6.6	2	36	27	35
2002	766	5.6	1.4	5.5	4.6	6.4	4	38	28	29
2003	1104	5.4	1.4	5.3	4.4	6.1	5	45	27	23
2004	1230	5.3	1.4	5.2	4.4	6.1	5	48	26	21
2005	1242	5.2	1.3	5	4.3	5.9	5	55	22	18
2006	1395	5.2	1.4	5.1	4.3	5.9	6	51	25	18
2007	1629	5.1	1.3	5.1	4.2	5.9	8	50	24	18



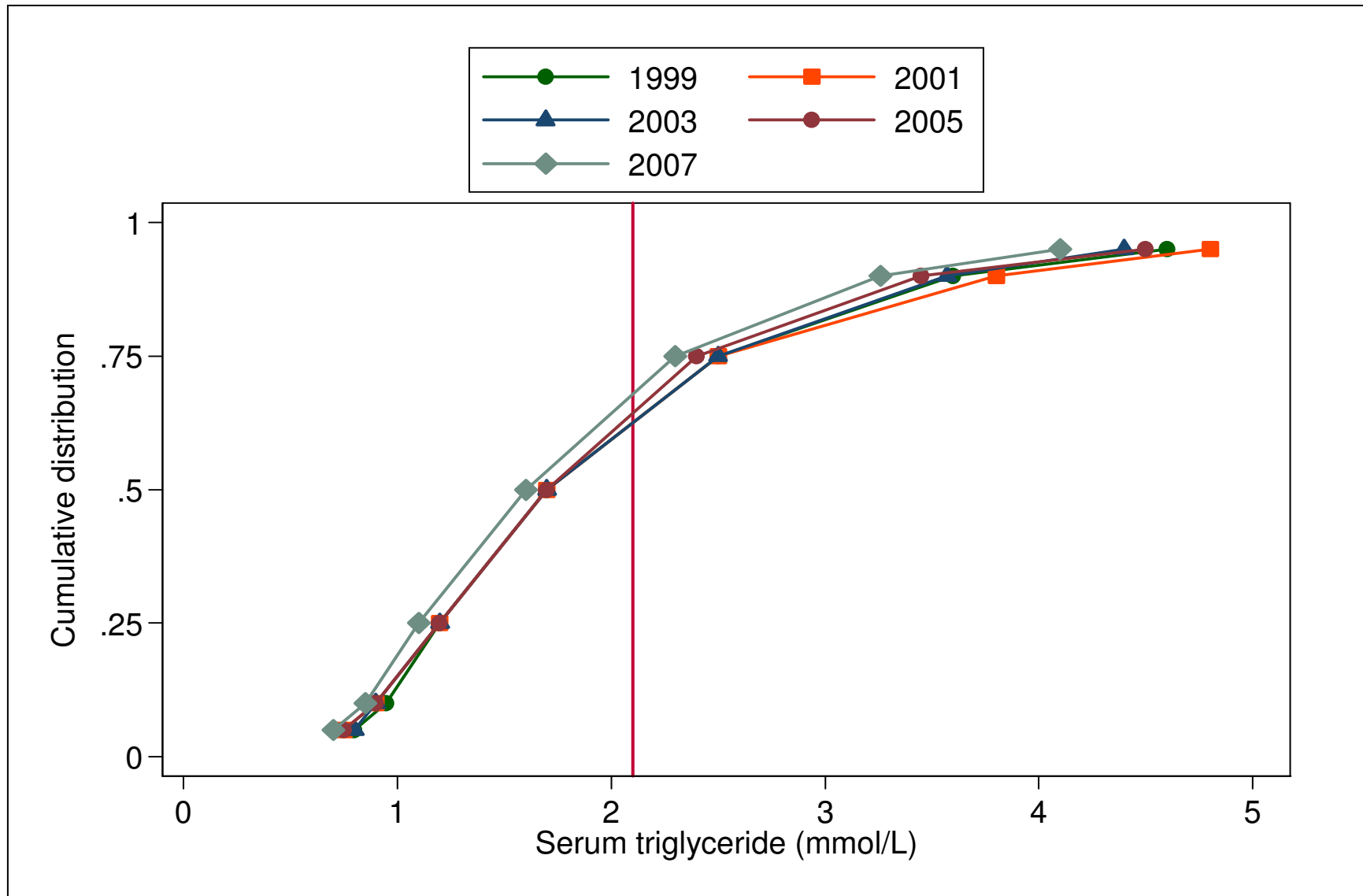
Figure 9.2.2: Cumulative distribution of Cholesterol (mmol/L), CAPD patients 1998-2007



**Table 9.2.3: Distribution of serum Triglyceride, HD patients 1998-2007**

Year	No of subjects	Mean	SD	Median	LQ	UQ	% patients <1.7 mmol/L	% patients 1.7-<2.3 mmol/L	% patients 2.3-<3.5 mmol/L	% patients $\geq$ 3.5 mmol/L
1998	1089	2.2	1.5	1.8	1.3	2.6	42	26	20	12
1999	1633	2.1	1.3	1.7	1.2	2.5	49	21	18	11
2000	2393	2.1	1.4	1.7	1.3	2.6	48	22	19	12
2001	3162	2.1	1.4	1.7	1.2	2.5	48	22	17	13
2002	3861	2.1	1.4	1.8	1.2	2.5	47	22	18	12
2003	4709	2	1.3	1.7	1.2	2.5	48	23	18	11
2004	5606	2	1.2	1.7	1.2	2.4	51	23	17	10
2005	6950	2	1.3	1.7	1.2	2.4	50	22	18	10
2006	9522	2	1.3	1.6	1.2	2.3	54	21	16	9
2007	10866	1.9	1.2	1.6	1.1	2.3	55	21	16	8

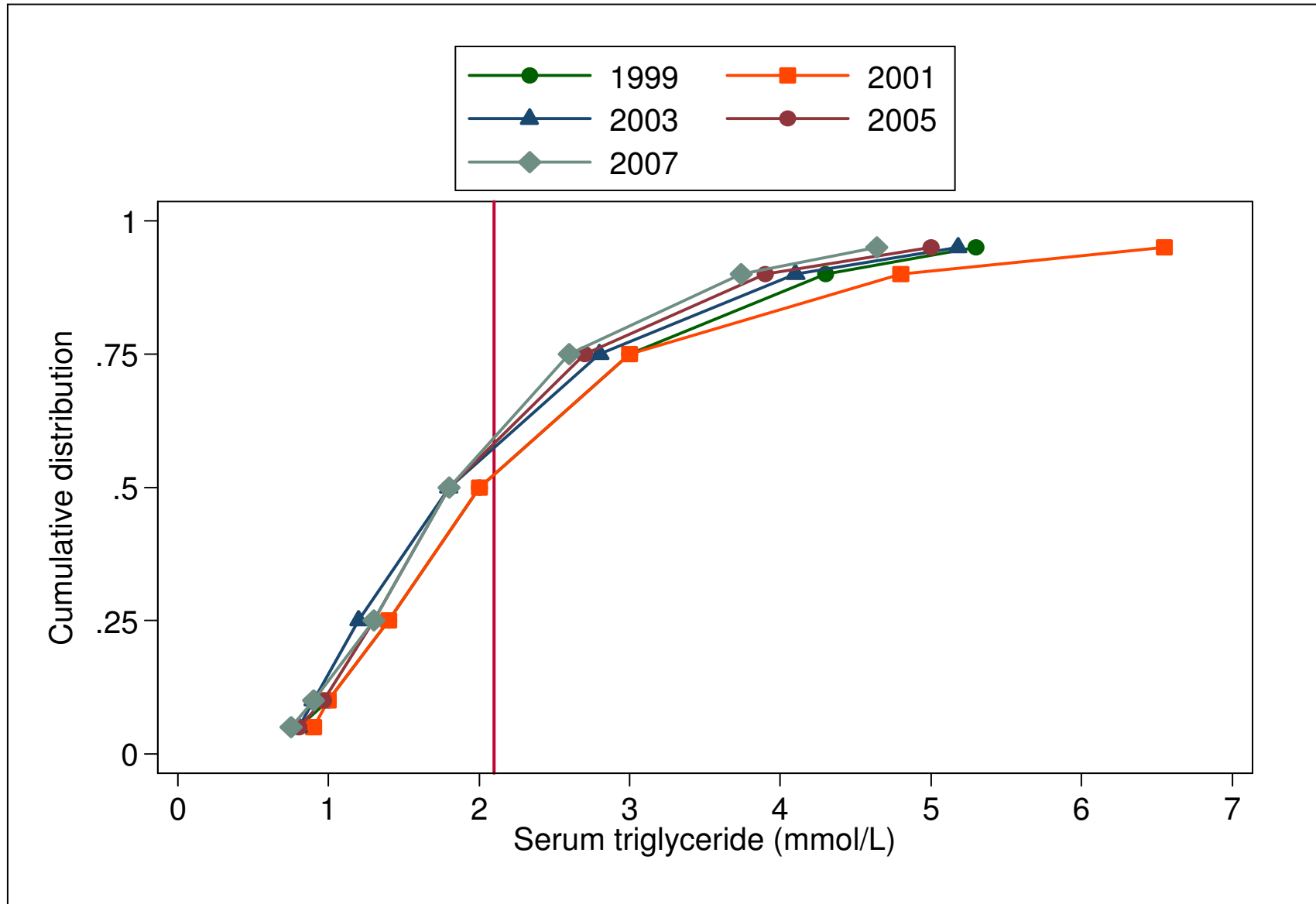
Figure 9.2.3: Cumulative distribution of serum triglyceride, HD patients 1998-2007



**Table 9.2.4: Distribution of serum triglyceride, CAPD patients 1998-2007**

Year	No of subjects	Mean	SD	Median	LQ	UQ	% patients <1.7 mmol/L	% patients 1.7-<2.3 mmol/L	% patients 2.3-<3.5 mmol/L	% patients ≥ 3.5 mmol/L
1998	344	2.4	1.8	1.8	1.3	3	42	22	17	19
1999	421	2.4	1.6	2	1.4	3	38	25	18	19
2000	520	2.7	2.2	2.1	1.5	3	33	24	23	21
2001	576	2.6	1.8	2	1.4	3	36	22	22	20
2002	767	2.5	1.7	2	1.4	3	39	21	22	18
2003	1100	2.3	1.6	1.8	1.2	2.8	45	20	21	14
2004	1223	2.2	1.6	1.8	1.3	2.6	47	23	17	13
2005	1241	2.2	1.5	1.8	1.3	2.7	43	24	18	14
2006	1391	2.2	1.6	1.7	1.2	2.6	47	21	18	13
2007	1625	2.1	1.4	1.8	1.3	2.6	45	24	19	12

Figure 9.2.4: Cumulative distribution of serum triglyceride, CAPD patients 1998-2007

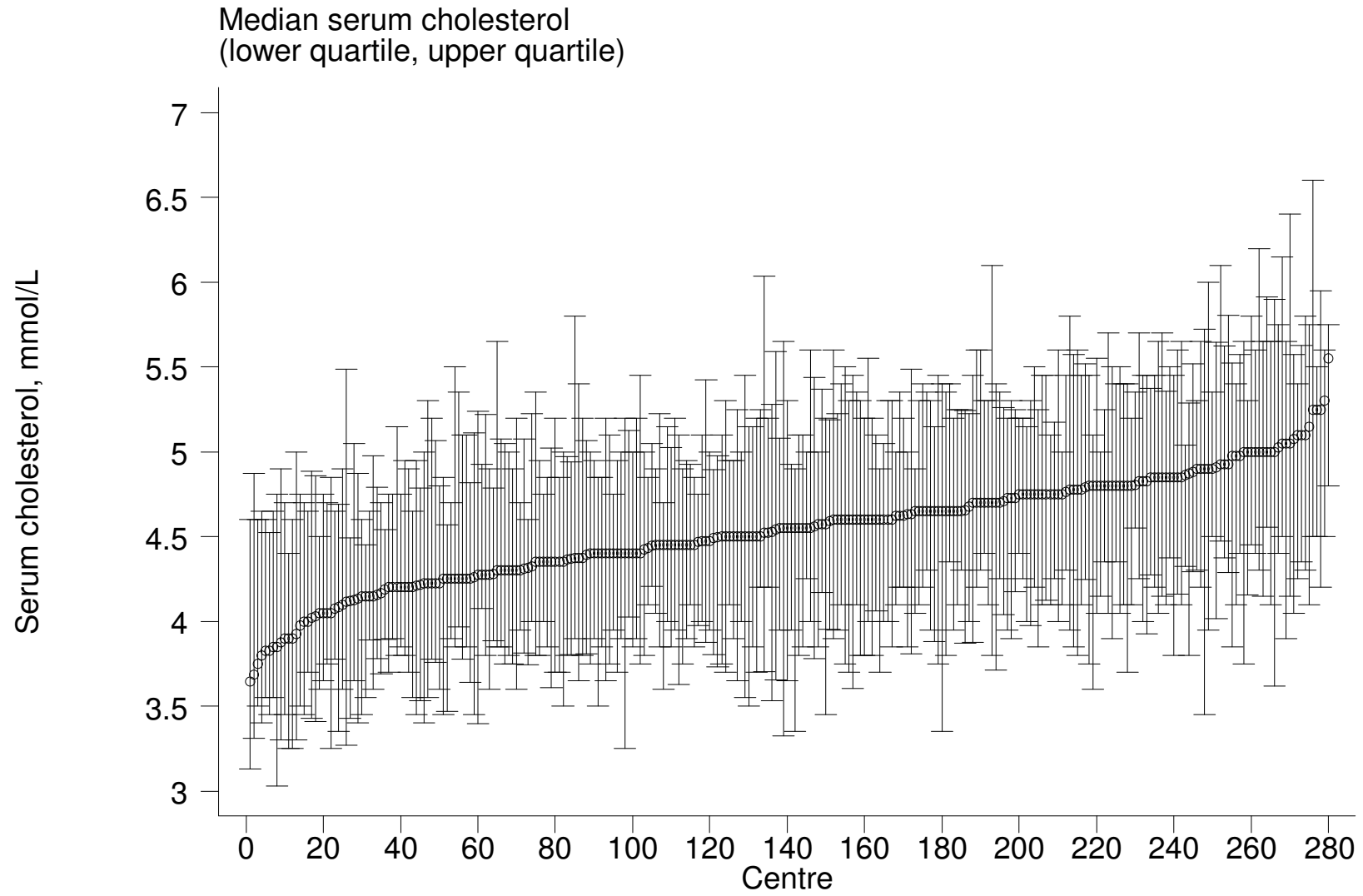


**Table 9.2.5: Variation in dyslipidaemia among HD centers 2007**

(a) Median serum cholesterol level among HD patients

Year	No. of centres	Min	5 <sup>th</sup> Centile	LQ	Median	UQ	95 <sup>th</sup> Centile	Max
1998	31	4.2	4.4	4.7	5	5.3	5.5	5.5
1999	47	3.5	4.2	4.6	4.8	5.1	5.6	5.7
2000	76	4.1	4.3	4.7	4.9	5.2	5.6	5.9
2001	95	4.1	4.4	4.7	5	5.2	5.6	6.3
2002	121	4.3	4.6	4.7	4.9	5.1	5.4	6
2003	152	4.1	4.3	4.6	4.8	5	5.3	5.6
2004	182	3.7	4.1	4.5	4.7	4.9	5.3	6.2
2005	210	3.8	4.1	4.4	4.6	4.8	5.2	5.7
2006	264	3.4	3.9	4.3	4.6	4.8	5.2	5.7
2007	280	3.6	4	4.3	4.6	4.8	5	5.6

Figure 9.2.5(a): Variation in median serum cholesterol level among HD patients, HD centers 2007



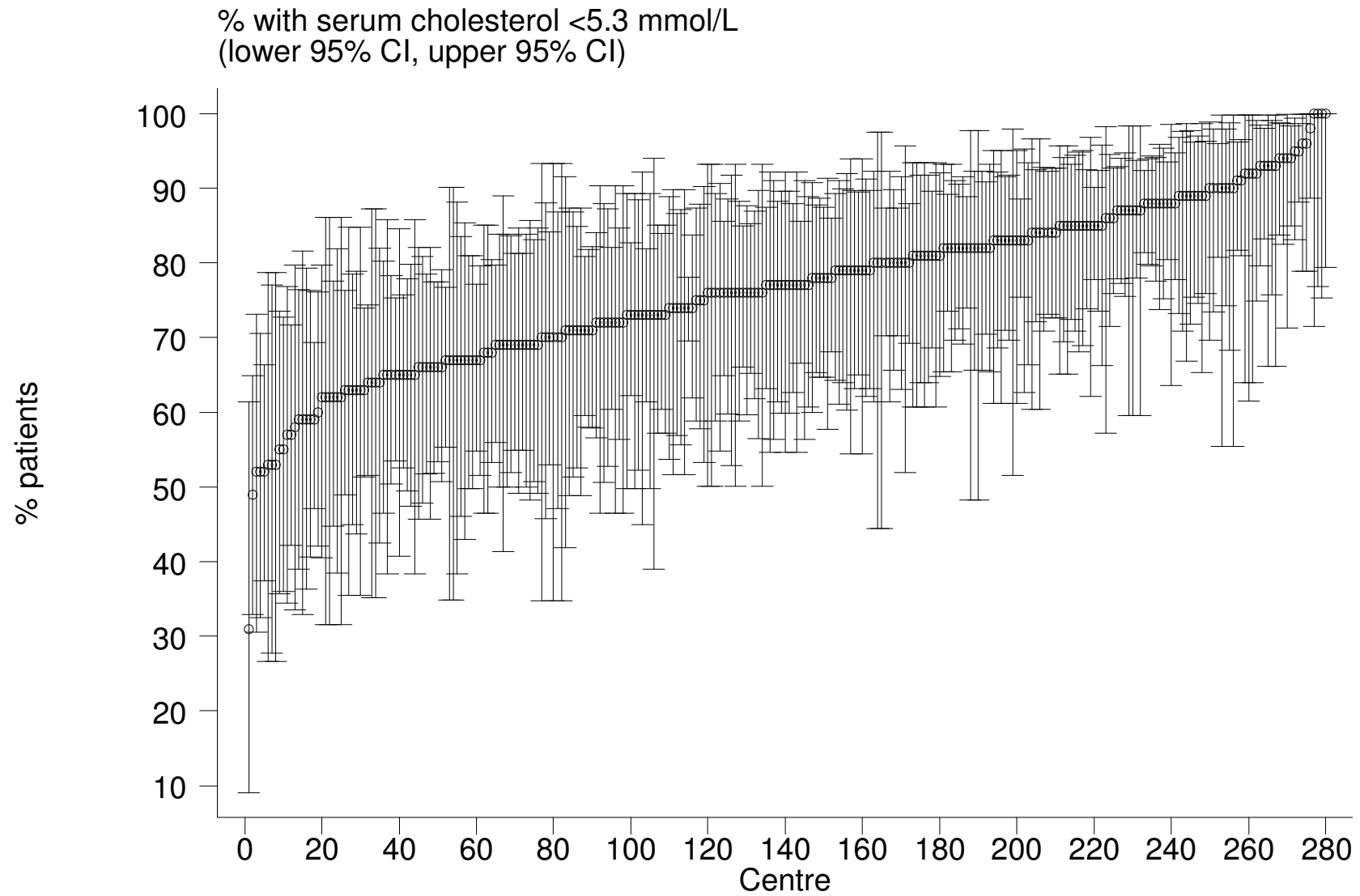
**Table 9.2.5: Variation in dyslipidaemia among HD centers 2007**

(b) Proportion of patients with serum cholesterol &lt; 5.3 mmol/L

Year	No. of centres	Min	5 <sup>th</sup> Centile	LQ	Median	UQ	95 <sup>th</sup> Centile	Max
1998	31	30	30	51	63	72	90	100
1999	47	38	38	58	64	78	86	89
2000	76	27	36	51.5	61	68	86	94
2001	95	14	36	53	60	68	79	85
2002	121	28	45	57	64	71	79	93
2003	152	36	50	59	67.5	76	83	92
2004	182	31	50	62	70	79	90	94
2005	210	25	53	66	74	81	91	94
2006	264	40	53	69	75	83	93	100
2007	280	31	59	69	77	84.5	93	100



**Figure 9.2.5(b): Variation in proportion of patients with serum cholesterol < 5.3 mmol/L, HD centers 2007**

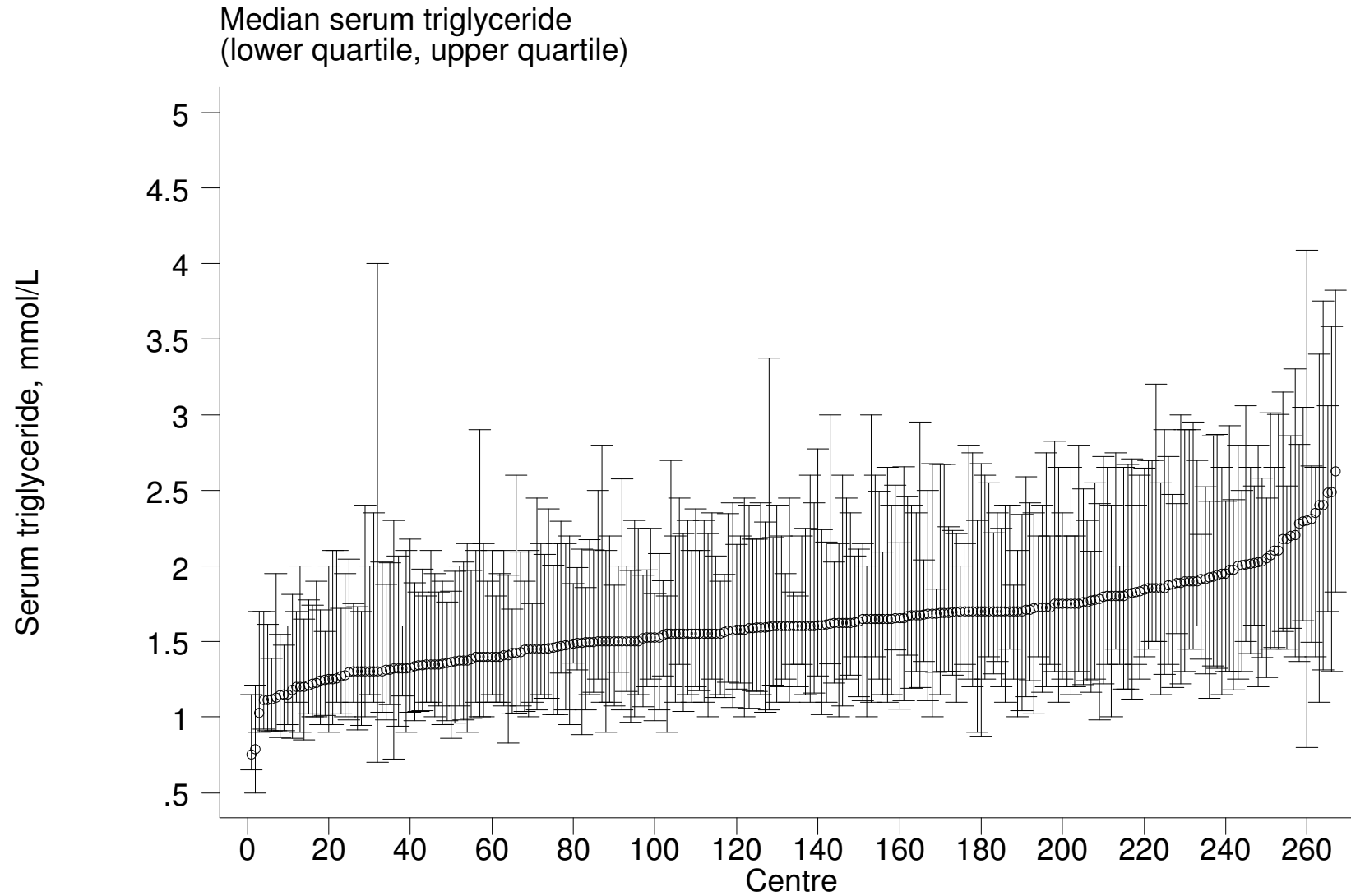


**Table 9.2.5: Variation in dyslipidaemia among HD centers 2007**

(c) Median serum triglyceride level among HD patients

Year	No. of centres	Min	5 <sup>th</sup> Centile	LQ	Median	UQ	95 <sup>th</sup> Centile	Max
1998	29	1.4	1.5	1.6	1.8	2	2.1	2.3
1999	41	1.2	1.4	1.5	1.7	1.9	2.2	2.5
2000	59	1.2	1.4	1.5	1.8	2	2.6	3
2001	81	1.1	1.3	1.5	1.7	1.9	2.3	2.5
2002	98	1.1	1.4	1.6	1.8	2	2.5	3.2
2003	130	1.2	1.3	1.5	1.7	1.9	2.2	2.5
2004	158	1	1.3	1.5	1.7	1.8	2.3	2.8
2005	191	0.8	1.3	1.5	1.7	1.9	2.2	2.6
2006	252	0.9	1.2	1.5	1.6	1.8	2.2	4.5
2007	267	0.8	1.2	1.4	1.6	1.8	2.2	2.6

Figure 9.2.5(c): Variation in median serum triglyceride level among HD patients, HD centers 2007

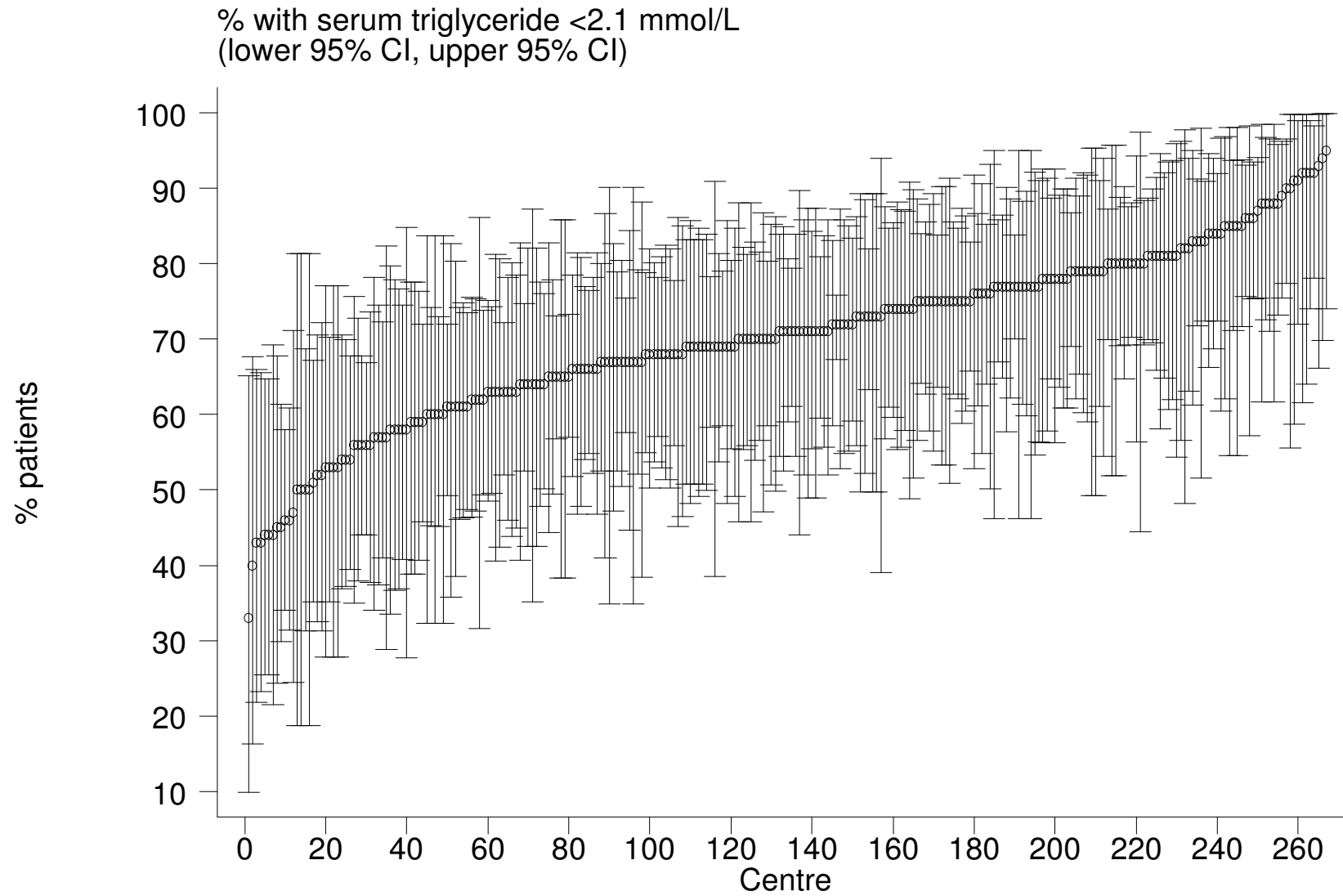


**Table 9.2.5: Variation in dyslipidaemia among HD centers 2007**

(d) Proportion of patients with serum triglyceride &lt; 2.1 mmol/L

Year	No. of centres	Min	5 <sup>th</sup> Centile	LQ	Median	UQ	95 <sup>th</sup> Centile	Max
1998	29	44	50	58	63	70	82	83
1999	41	36	47	59	67	73	88	92
2000	59	23	27	56	65	73	83	86
2001	81	38	45	57	65	76	85	90
2002	98	0	43	54	64.5	72	80	94
2003	130	27	43	57	67	75	90	100
2004	158	21	47	60	69	78	85	94
2005	191	33	44	59	67	73	83	100
2006	252	0	49	63.5	70	76	90	100
2007	267	33	50	63	71	78	88	95

Figure 9.2.5(d): Variation in proportion of patients with serum triglyceride < 2.1 mmol/L, HD centers 2007

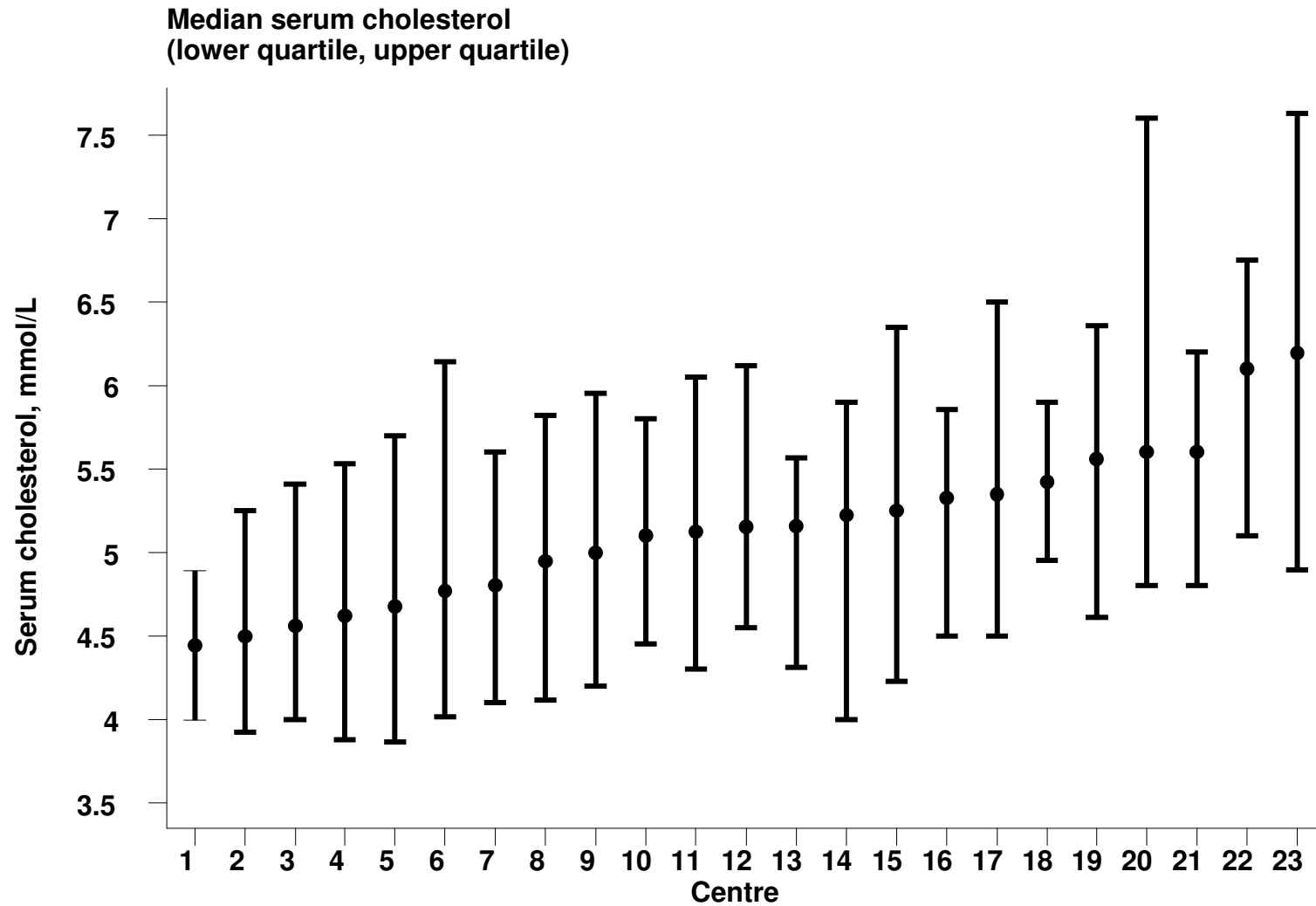


**Table 9.2.6: Variation in dyslipidaemia among CAPD centers 2007**

a) Median serum cholesterol level among CAPD patients

Year	No. of centres	Min	5 <sup>th</sup> Centile	LQ	Median	UQ	95 <sup>th</sup> Centile	Max
1998	6	4.8	4.8	5.6	5.8	6.1	6.2	6.2
1999	8	5.1	5.1	5.4	5.7	5.8	6	6
2000	10	5.2	5.2	5.4	5.6	5.9	6.4	6.4
2001	10	5	5	5.6	5.9	6.1	6.2	6.2
2002	15	4.9	4.9	5.4	5.5	5.7	6.2	6.2
2003	18	4.5	4.5	5	5.3	5.7	5.9	5.9
2004	19	4.6	4.6	4.9	5.3	5.5	6.2	6.2
2005	19	4.4	4.4	4.7	5	5.4	5.9	5.9
2006	21	4.4	4.6	4.8	5.1	5.4	6.1	6.2
2007	23	4.4	4.5	4.8	5.2	5.4	6.1	6.2

Figure 9.2.6(a): Variation in median serum cholesterol level among CAPD patients, CAPD centers 2007



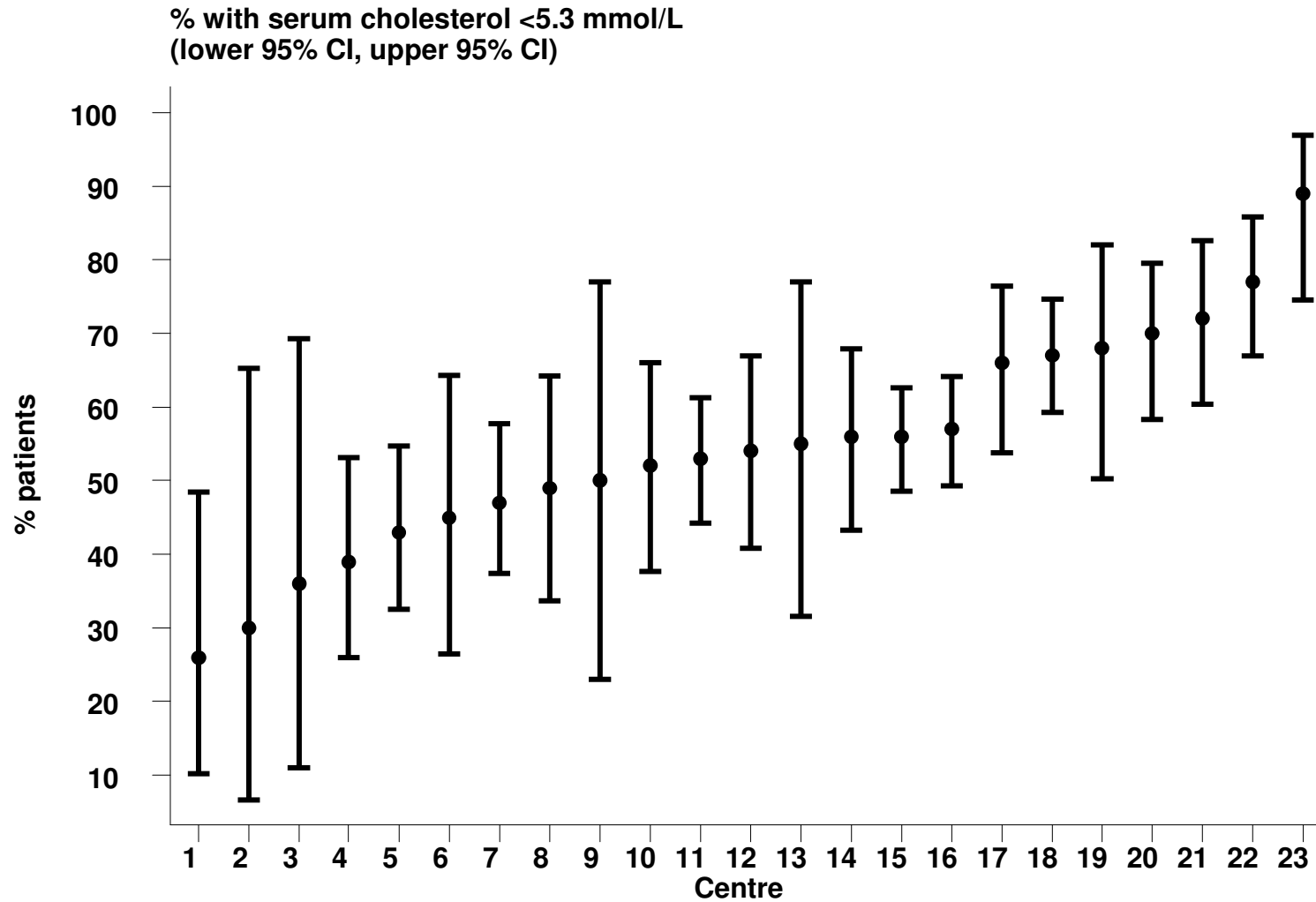
**Table 9.2.6: Variation in dyslipidaemia among CAPD centers 2007**

(b) Proportion of patients with serum cholesterol &lt; 5.3 mmol/L

Year	No. of centres	Min	5 <sup>th</sup> Centile	LQ	Median	UQ	95 <sup>th</sup> Centile	Max
1998	6	24	24	27	32	37	53	53
1999	8	10	10	36.5	39.5	45	56	56
2000	10	11	11	18	31	46	54	54
2001	10	22	22	30	34.5	45	63	63
2002	15	19	19	33	42	45	80	80
2003	18	20	20	39	48.5	59	83	83
2004	19	10	10	40	49	60	71	71
2005	19	28	28	49	60	70	77	77
2006	21	18	29	48	59	66	75	80
2007	23	26	30	45	54	67	77	89



Figure 9.2.6(b): Variation in proportion of patients with serum cholesterol < 5.3 mmol/L, CAPD centers 2007

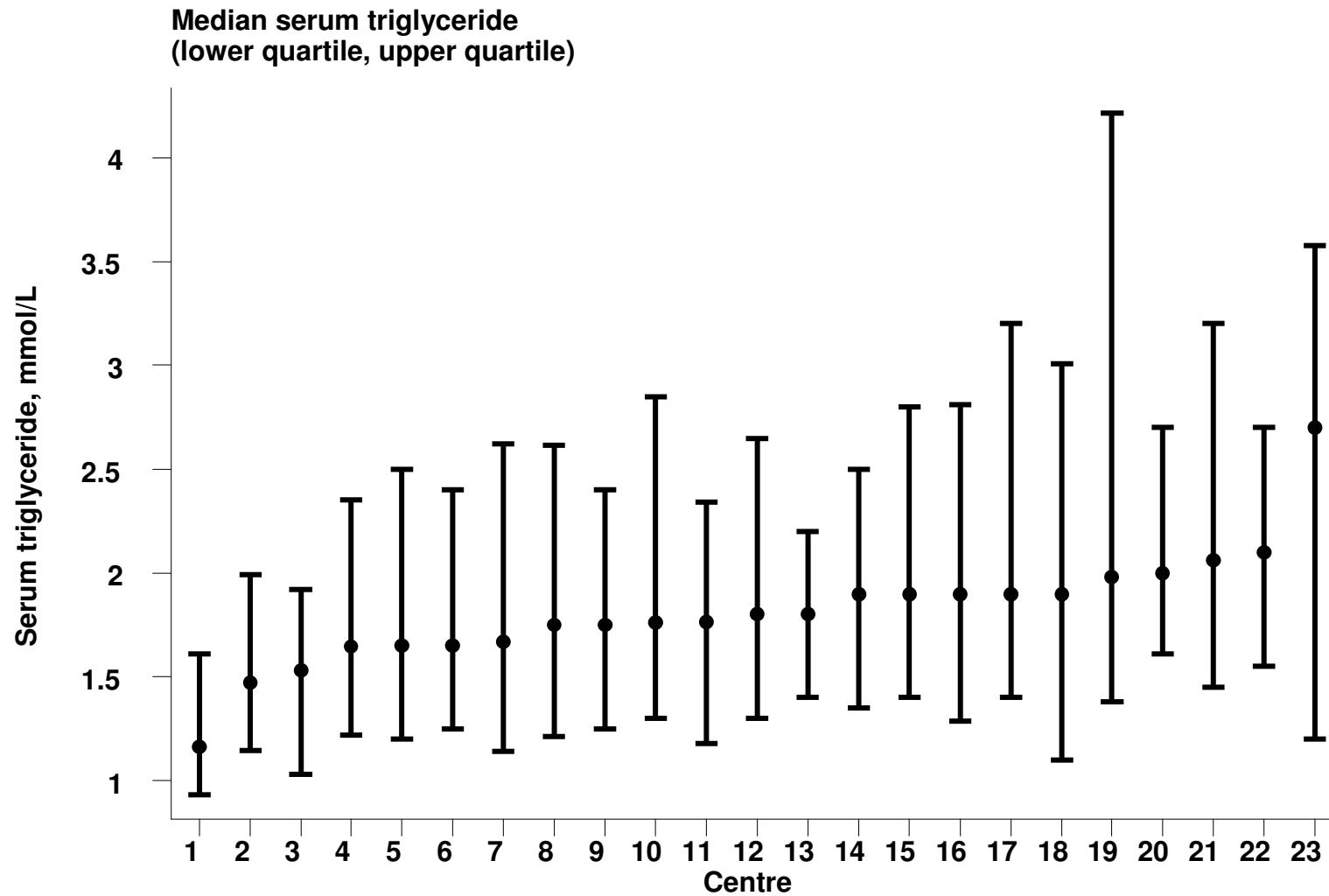


**Table 9.2.6: Variation in dyslipidaemia among CAPD centers 2007**

(c) Median serum triglyceride level among CAPD patients

Year	No. of centres	Min	5 <sup>th</sup> Centile	LQ	Median	UQ	95 <sup>th</sup> Centile	Max
1998	6	1.2	1.2	1.5	1.7	1.9	2.1	2.1
1999	8	1.6	1.6	1.9	2	2.1	2.6	2.6
2000	10	1.8	1.8	2	2.3	2.5	2.6	2.6
2001	10	1.5	1.5	1.9	2	2.1	3	3
2002	15	1.5	1.5	1.8	1.9	2	2.4	2.4
2003	18	1.2	1.2	1.7	1.8	2	2.3	2.3
2004	19	1.3	1.3	1.6	1.8	1.8	2.2	2.2
2005	19	1.3	1.3	1.6	1.9	2	2.2	2.2
2006	21	1.1	1.4	1.6	1.8	1.9	2	2.6
2007	23	1.2	1.5	1.7	1.8	1.9	2.1	2.7

Figure 9.2.6(c): Variation in median serum triglyceride level among CAPD patients, CAPD centers 2007



**Table 9.2.6: Variation in dyslipidaemia among CAPD centers 2007**

(d) Proportion of patients with serum triglyceride &lt; 2.1 mmol/L

Year	No. of centres	Min	5 <sup>th</sup> Centile	LQ	Median	UQ	95 <sup>th</sup> Centile	Max
1998	6	51	51	55	61	70	85	85
1999	8	37	37	53.5	56	60.5	64	64
2000	10	18	18	42	49	54	62	62
2001	10	27	27	50	53	58	68	68
2002	15	38	38	52	56	57	76	76
2003	18	48	48	55	59	62	92	92
2004	19	47	47	60	62	67	90	90
2005	19	42	42	55	60	69	89	89
2006	21	29	52	56	61	63	78	83
2007	23	40	52	59	64	69	80	81

Figure 9.2.6(d): Variation in proportion of patients with serum triglyceride < 2.1 mmol/L, CAPD centers 2007

