

# **Chapter 5: Quality Of Life and Rehabilitation Outcomes of Patients on Dialysis**

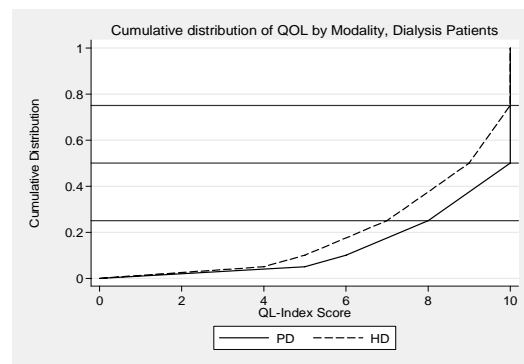
List of Editors

*16th Report of the Malaysian Dialysis and Transplant Registry 2008*

**Table 5.1: Cumulative distribution of QoL-Index score in relation to dialysis modality, All dialysis patients 1999-2008**

Dialysis modality	PD	HD
Number of patients	3413	18298
Centile		
0	0	0
0.05	5	4
0.1	6	5
0.25 (LQ)	8	7
0.5 (median)	10	9
0.75 (UQ)	10	10
0.9	10	10
0.95	10	10
1	10	10

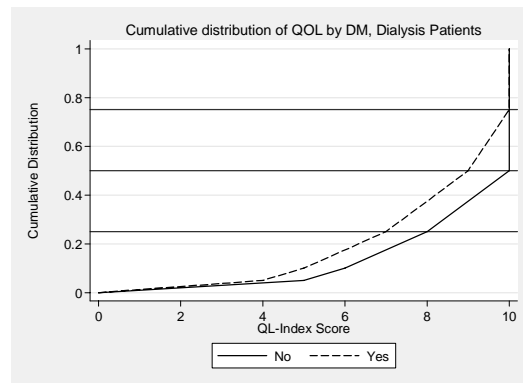
**Figure 5.1: Cumulative distribution of QoL-Index score in relation to Dialysis Modality, All Dialysis patients 1999- 2008**



**Table 5.2: Cumulative distribution of QoL-Index score in relation to DM, All dialysis patients 1999-2008**

Diabetes mellitus	No	Yes
Number of patients	10662	11049
Centile		
0	0	0
0.05	5	4
0.1	7	5
0.25 (LQ)	8	6
0.5 (median)	10	8
0.75 (UQ)	10	10
0.9	10	10
0.95	10	10
1	10	10

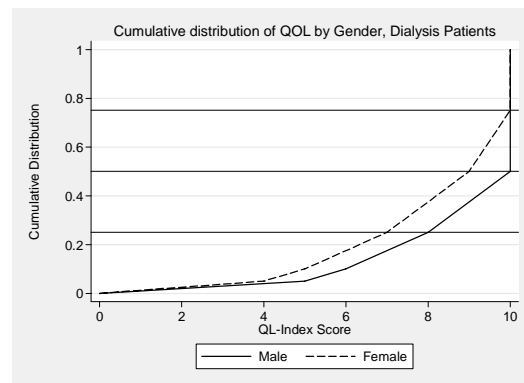
**Figure 5.2: Cumulative distribution of QoL-Index score in relation to DM, All Dialysis patients, 1999-2008**



**Table 5.3: Cumulative distribution of QoL-index score in relation to Gender, All Dialysis patients 1999-2008**

Gender	Male	Female
Number of patients	12017	9694
Centile		
0	0	0
0.05	5	4
0.1	6	5
0.25 (LQ)	7	7
0.5 (median)	9	9
0.75 (UQ)	10	10
0.9	10	10
0.95	10	10
1	10	10

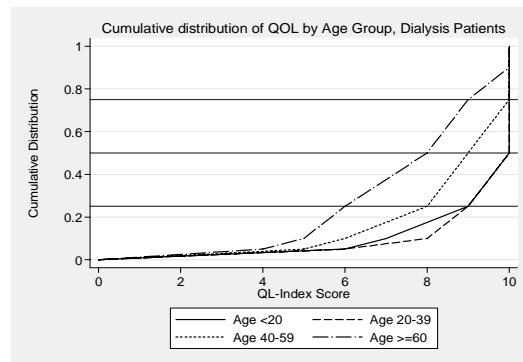
**Figure 5.3: Cumulative distribution of QoL-Index score in relation to Gender, All Dialysis patients, 1999- 2008**



**Table 5.4: Cumulative distribution of QoL-index score in relation to Age, All Dialysis patients 1999-2008**

Age group	<20	20-39	40-59	>=60
Number of patients	799	3516	10379	7017
Centile				
0	0	0	0	0
0.05	6	6	5	4
0.1	7	8	6	5
0.25 (LQ)	9	9	8	6
0.5 (median)	10	10	9	8
0.75 (UQ)	10	10	10	9
0.9	10	10	10	10
0.95	10	10	10	10
1	10	10	10	10

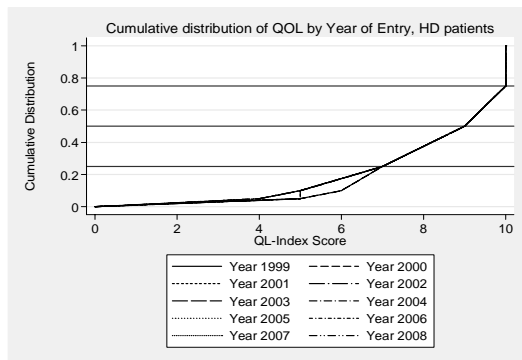
**Figure 5.4: Cumulative distribution of QoL-Index score in relation to Age, All Dialysis patients, 1999-2008**



**Table 5.5: Cumulative distribution of QoL-Index score in relation to year of entry, HD patients 1999-2008**

Year of Entry	1999	2000	2001	2002	2003	2004	2005	2006	2007	2008
Number of patients	1041	1274	1439	1649	1708	2033	2122	2458	2460	2114
Centile										
0	0	0	0	0	0	0	0	0	0	0
0.05	5	5	5	4	5	4	4	4	4	4
0.1	6	6	5	5	5	5	5	5	5	5
0.25 (LQ)	7	7	7	7	7	7	7	7	7	7
0.5 (median)	9	9	9	9	9	9	9	9	9	9
0.75 (UQ)	10	10	10	10	10	10	10	10	10	10
0.9	10	10	10	10	10	10	10	10	10	10
0.95	10	10	10	10	10	10	10	10	10	10
1	10	10	10	10	10	10	10	10	10	10

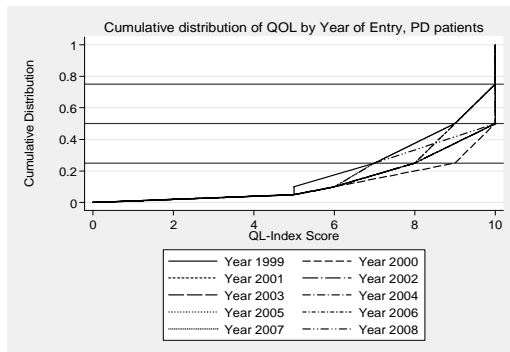
**Figure 5.5: Cumulative distribution of QoL-Index score in relation to year of entry, HD patients 1999-2008**



**Table 5.6: Cumulative distribution of QoL-Index score in relation to year of entry, PD patients 1999-2008**

Year of Entry	1999	2000	2001	2002	2003	2004	2005	2006	2007	2008
Number of patients	1041	1274	1439	1649	1708	2033	2122	2458	2460	2114
Centile										
0	0	0	0	0	0	0	0	0	0	0
0.05	5	5	5	4	5	4	4	4	4	4
0.1	6	6	5	5	5	5	5	5	5	5
0.25 (LQ)	7	7	7	7	7	7	7	7	7	7
0.5 (median)	9	9	9	9	9	9	9	9	9	9
0.75 (UQ)	10	10	10	10	10	10	10	10	10	10
0.9	10	10	10	10	10	10	10	10	10	10
0.95	10	10	10	10	10	10	10	10	10	10
1	10	10	10	10	10	10	10	10	10	10

**Figure 5.6: Cumulative distribution of QoL-Index score in relation to year of entry, PD patients 1999-2008**



**Table 5.7: Work related rehabilitation in relation to modality, dialysis patients, 1999 to 2008**

Modality	PD		HD	
	N	%	N	%
Number of patients	1112		7199	
Able to return for Full or Part time for pay*	792	71	5013	70
Unable to work for pay	320	29	2186	30

**Table 5.8: Work related rehabilitation in relation to year of entry, HD patients 1999 to 2008**

Year	1999	2000	2001	2002	2003	2004	2005	2006	2007	2008	
Number of patients	534	591	604	690	707	807	788	906	850	722	
Able to return for Full or Part time for pay*	No	405	455	439	510	516	555	546	614	555	418
	%	76	77	73	74	73	69	69	68	65	58
Unable to work for pay	No	129	136	165	180	191	252	242	292	295	304
	%	24	23	27	26	27	31	31	32	35	42

**Table 5.9: Work related rehabilitation in relation to year of entry, PD patients 1999 to 2008**

Year	1999	2000	2001	2002	2003	2004	2005	2006	2007	2008	
Number of patients	48	64	85	119	140	103	112	142	152	147	
Able to return for Full or Part time for pay*	No	35	43	69	90	108	73	81	99	101	93
	%	73	67	81	76	77	71	72	70	66	63
Unable to work for pay	No	13	21	16	29	32	30	31	43	51	54
	%	27	33	19	24	23	29	28	30	34	37



**Table 11.7b: Risk factors for seroconversion to anti-HCV positive among sero-negative patients in PD**

Risk factor	Number of patients	Risk Ratio	95% CI	p-value
<b>Age</b>				
(1) <=20 ref	4	1.00		
(2) 21-40	22	3.54	(1.21, 10.32)	0.021
(3) 41-60	26	1.99	(0.69, 5.72)	0.202
(4) >60	3	0.35	(0.08, 1.58)	0.172
<b>Gender</b>				
(1) Female ref	28	1.00		
(2) Male	27	0.97	(0.57, 1.65)	0.900
<b>Diabetes</b>				
(1) No ref	46	1.00		
(2) Yes	9	0.23	(0.11, 0.47)	0.000
<b>Switch from PD to HD</b>				
(1) No ref	35	1.00		
(2) Yes	20	6.81	(3.89, 11.93)	0.000
<b>Previous Renal Transplant</b>				
(1) No ref	48	1.00		
(2) Yes	7	2.50	(1.12, 5.58)	0.026
<b>History of Blood Transfusion</b>				
(1) No ref	23	1.00		
(2) Yes	32	2.29	(1.33, 3.92)	0.003