

Chapter 11: Hepatitis on Dialysis

Teo Sue Mei
Clare Tan Hui Hong
Foo Sui Mei

16th Report of the Malaysian Dialysis and Transplant Registry 2008

Table 11.1: Prevalence of positive HBsAg and positive Anti-HCV at annual survey, HD patients 1999-2008

Year	No. of subjects	Prevalence of HBsAg+ (%)	Prevalence of Anti-HCV+ (%)
1999	2991	6	23
2000	4386	6	25
2001	5187	6	23
2002	6106	5	20
2003	6977	5	19
2004	7618	5	17
2005	8957	4	14
2006	11295	5	12
2007	12496	5	11
2008	14832	4	9

Table 11.2: Prevalence of positive HBsAg and positive Anti-HCV at annual survey, PD patients 1999-2008

Year	No. of subjects	Prevalence of HBsAg+ (%)	Prevalence of Anti-HCV+ (%)
1999	610	2	5
2000	662	2	5
2001	781	2	3
2002	891	3	4
2003	1223	3	4
2004	1200	4	5
2005	1318	4	5
2006	1494	5	4
2007	1731	5	4
2008	2017	4	3

Table 11.3: Variation in Proportion of patients with positive HBsAg at annual survey among HD centres, 2008

Year	No. of centres	Min	5th Centile	LQ	Median	UQ	95th Centile	Max
1999	76	0	0	0	4	10	18	30
2000	108	0	0	0	4	9	14	80
2001	127	0	0	0	5	9	16	90
2002	152	0	0	0	3	8	13	26
2003	179	0	0	0	3	8	17	67
2004	203	0	0	0	3	8	15	92
2005	235	0	0	0	2	7	15	100
2006	289	0	0	0	0	6	16	94
2007	312	0	0	0	0	6.5	15	100
2008	355	0	0	0	0	6	13	95

Figure 11.3: Variation in Proportion of patients with positive HBsAg among HD centres, 2008

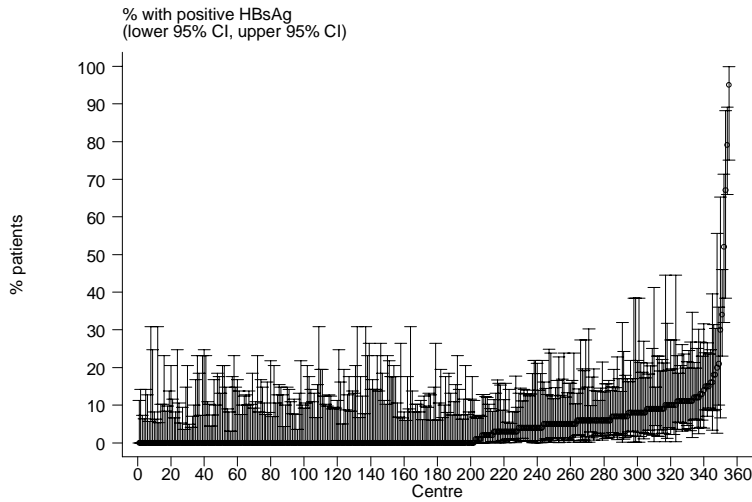


Table 11.4: Variation in Proportion of patients with positive HBsAg at annual survey among PD centres, 2008

Year	No. of centres	Min	5th Centile	LQ	Median	UQ	95th Centile	Max
1999	10	0	0	0	2	2	4	4
2000	11	0	0	0	1	4	5	5
2001	12	0	0	0	2	3	9	9
2002	15	0	0	1	3	6	18	18
2003	19	0	0	1	4	6	8	8
2004	19	0	0	1	3	5	11	11
2005	20	0	0	0.5	3	5	7.5	10
2006	22	0	0	2	4	6	9	13
2007	23	0	0	0	4	6	7	11
2008	23	0	0	1	4	5	10	13

Figure 11.4: Variation in Proportion of patients with positive HBsAg among PD centres, 2008

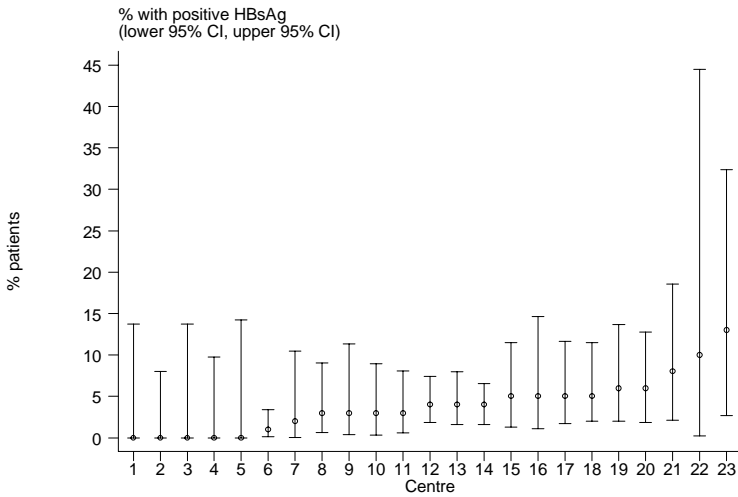


Table 11.5: Variation in Proportion of patients with positive anti-HCV at annual survey among HD centres, 2008

Year	No. of centre	Min	5th centile	LQ	Median	UQ	95th centile	Max
1999	76	0	0	7	20	32.5	62	79
2000	108	0	0	9	19	32.5	67	87
2001	127	0	0	7	17	32	65	88
2002	152	0	0	5	14	26	54	96
2003	179	0	0	6	14	25	50	94
2004	205	0	0	4	11	25	50	100
2005	236	0	0	1	10	21	40	98
2006	289	0	0	0	8	17	43	98
2007	311	0	0	0	7	14	35	100
2008	354	0	0	0	5	12	32	100

Figure 11.5: Variation in Proportion of patients with positive anti-HCV among HD centres, 2008

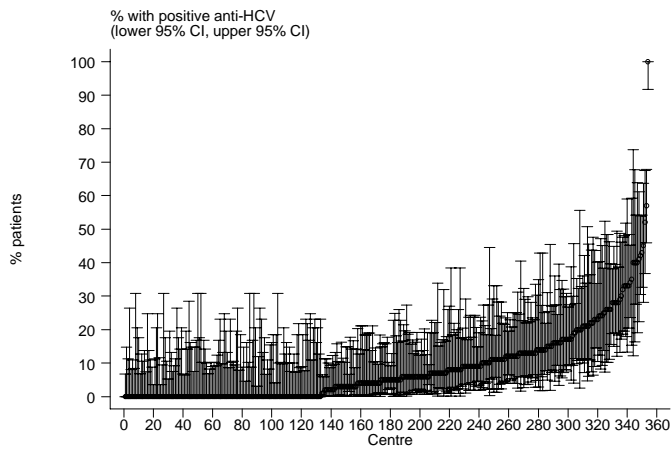


Table 11.6: Variation in Proportion of patients with positive anti-HCV at annual survey among PD centres, 2008

Year	No. of centre	Min	5th centile	LQ	Median	UQ	95th centile	Max
1999	10	0	0	3	4	7	14	14
2000	11	0	0	2	3	8	10	10
2001	12	0	0	0	3	4	7	7
2002	15	0	0	0	3	8	11	11
2003	19	0	0	1	4	7	9	9
2004	19	0	0	0	4	7	10	10
2005	20	0	0	2	4	7.5	10	10
2006	22	0	0	1	2.5	6	8	11
2007	23	0	0	0	2	6	8	9
2008	23	0	0	0	3	4	5	9

Figure 11.6: Variation in Proportion of patients with positive anti-HCV among PD centres, 2008

% with positive anti-HCV
(lower 95% CI, upper 95% CI)

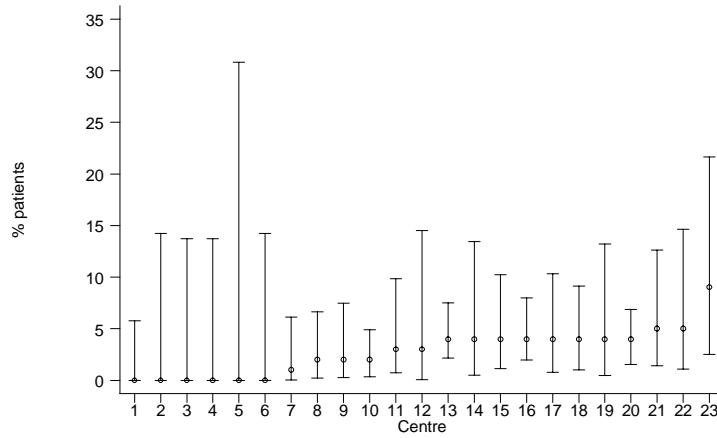


Table 11.7a: Risk factors in relation to HD practices for seroconversion to anti-HCV positive among sero-negative patients

Risk factor	Number of patients	Risk Ratio	95% CI	p-value
Assistance to Perform HD				
(1) Self care ^{ref}	175	1.00		
(2) Partial self care	140	0.70	(0.56, 0.87)	0.002
(3) Completely assisted	361	0.45	(0.37, 0.54)	0.000
Dialyzer Reuse				
(1) less than 10 ^{ref}	310	1.00		
(2) more than 10	392	0.85	(0.73, 0.99)	0.041
Dialyzer Reprocessing System				
(1) Fully Auto ^{ref}	369	1.00		
(2) Semi Auto	47	0.77	(0.57, 1.05)	0.095
(3) Manual	37	0.82	(0.59, 1.16)	0.269
Age				
(1) <=20 ^{ref}	40	1.00		
(2) 21-40	235	0.80	(0.57, 1.13)	0.209
(3) 41-60	330	0.42	(0.30, 0.59)	0.000
(4) >60	97	0.18	(0.12, 0.26)	0.000
Gender				
(1) Female ^{rref}	281	1.00		
(2) Male	421	1.16	(1.00, 1.35)	0.056
Diabetes				
(1) No ^{ref}	522	1.00		
(2) Yes	180	0.36	(0.30,0.42)	0.000
Previous Renal Transplant				
(1) No ^{ref}	584	1.00		
(2) Yes	118	4.95	(4.02, 6.10)	0.000
History of Blood Transfusion				
(1) No ^{ref}	395	1.00		
(2) Yes	307	1.40	(1.21,1.63)	0.000

Table 11.7b: Risk factors for seroconversion to anti-HCV positive among sero-negative patients in PD

Risk factor	Number of patients	Risk Ratio	95% CI	p-value
Age				
(1) <=20 ref	4	1.00		
(2) 21-40	22	3.54	(1.21, 10.32)	0.021
(3) 41-60	26	1.99	(0.69, 5.72)	0.202
(4) >60	3	0.35	(0.08, 1.58)	0.172
Gender				
(1) Female ref	28	1.00		
(2) Male	27	0.97	(0.57, 1.65)	0.900
Diabetes				
(1) No ref	46	1.00		
(2) Yes	9	0.23	(0.11, 0.47)	0.000
Switch from PD to HD				
(1) No ref	35	1.00		
(2) Yes	20	6.81	(3.89, 11.93)	0.000
Previous Renal Transplant				
(1) No ref	48	1.00		
(2) Yes	7	2.50	(1.12, 5.58)	0.026
History of Blood Transfusion				
(1) No ref	23	1.00		
(2) Yes	32	2.29	(1.33, 3.92)	0.003