

Chapter 14: Renal Transplantation

Editor:

Dr. Goh Bak Leong

Expert Panel:

Dato' Dr. Zaik Morad (Chair)

Dr. Goh Bak Leong (Co-Chair)

Dr. Fan Kin Sing

Sr. Lily Mushahar

Mr. Rohan Malek

Dr. S Prasad Menon

Prof Dr. Tan Si Yen

16th Report of the Malaysian Dialysis and Transplant Registry 2008

Table 14.1.1: Stock and Flow of Renal Transplantation, 1999-2008

Year	1999	2000	2001	2002	2003	2004	2005	2006	2007	2008
New transplant patients	127	143	163	172	160	190	162	141	100	88
Died	25	30	37	33	37	42	43	50	39	48
Graft failure	37	32	40	39	42	44	21	38	37	32
Lost to Follow up	1	9	3	5	4	14	10	10	18	10
Functioning graft at 31 st December	1178	1250	1333	1428	1505	1595	1683	1726	1732	1730

Figure 14.1.1: Stock and Flow of Renal Transplantation, 1975-2008

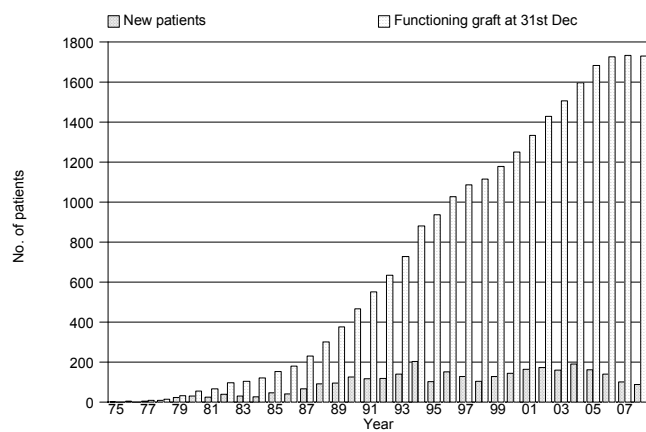


Table 14.1.2: New transplant rate per million population (pmp), 1999-2008

Year	1999	2000	2001	2002	2003	2004	2005	2006	2007	2008
New transplant patients	127	143	163	172	160	190	162	141	100	88
New transplant rate, pmp	6	6	7	7	6	7	6	5	4	3

Figure 14.1.2: New transplant rate, 1975-2008

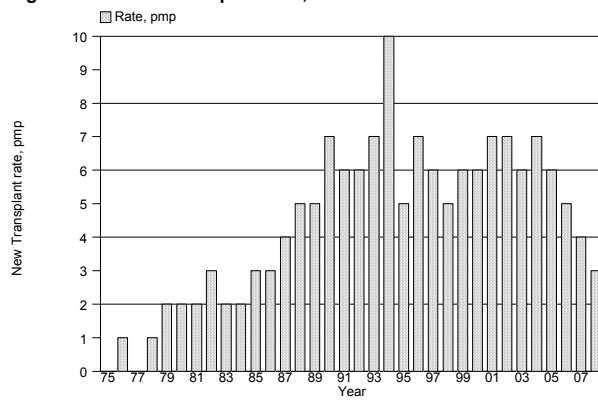


Table 14.1.4: Place of transplantation, 1999-2008

Year	1999		2000		2001		2002		2003	
	No.	%	No.	%	No.	%	No.	%	No.	%
HKL	36	28	28	20	33	20	30	17	26	16
UMMC	16	13	19	13	23	14	15	9	6	4
Selayang Hospital	0	0	4	3	11	7	11	6	11	7
Other local	1	1	3	2	4	2	1	1	1	1
China	63	50	80	56	83	51	103	60	111	69
India	5	4	9	6	8	5	12	7	4	3
Other overseas	2	2	0	0	1	1	0	0	1	1
Unknown	4	3	0	0	0	0	0	0	0	0
TOTAL	127	100	143	100	163	100	172	100	160	100

Year	2004		2005		2006		2007		2008		TOTAL	
	No.	%	No.	%	No.	%	No.	%	No.	%	No.	%
HKL	20	11	31	19	35	25	36	36	32	36	307	21
UMMC	7	4	7	4	5	4	0	0	0	0	98	7
Selayang Hospital	11	6	5	3	9	6	14	14	7	8	83	6
Other local	2	1	5	3	2	1	3	3	7	8	29	2
China	137	72	108	67	81	57	41	41	41	47	848	59
India	11	6	5	3	7	5	1	1	1	1	63	4
Other overseas	2	1	1	1	2	1	5	5	0	0	14	1
Unknown	0	0	0	0	0	0	0	0	0	0	4	0
TOTAL	190	100	162	100	141	100	100	100	88	100	1446	100

Table 14.2.1: Renal Transplant Recipients' Characteristics, 1999-2008

Year	1999	2000	2001	2002	2003	2004	2005	2006	2007	2008
New Transplant Patients	127	143	163	172	160	190	162	141	100	88
Age at transplant (years), Mean	37	39	41	41	42	41	38	37	36	34
Age at transplant (years), SD	13	14	13	13	13	13	14	15	16	15
% Male	62	64	63	58	66	62	70	67	63	58
% Diabetic (co-morbid/ primary renal disease)	11	15	18	15	22	22	20	21	14	15
% HBsAg positive	4	5	5	7	8	5	4	7	5	4
% Anti-HCV positive	11	8	15	8	10	8	2	8	10	4

Table 14.2.2: Primary causes of end stage renal failure, 1999-2008

Year	1999		2000		2001		2002		2003	
	No.	%	No.	%	No.	%	No.	%	No.	%
New transplant patients	127	100	143	100	163	100	172	100	160	100
Glomerulonephritis	41	32	50	35	44	27	54	31	54	34
Diabetes Mellitus	10	8	16	11	23	14	16	9	26	16
Hypertension	7	6	20	14	17	10	24	14	25	16
Obstructive uropathy	4	3	3	2	3	2	2	1	2	1
ADPKD	1	1	3	2	1	1	3	2	5	3
Drugs/ toxic nephropathy	0	0	0	0	0	0	0	0	2	1
Hereditary nephritis	0	0	0	0	0	0	0	0	0	0
Unknown	62	49	54	38	61	37	70	41	58	36
Others	6	5	12	8	23	14	16	9	12	8

Year	2004		2005		2006		2007		2008	
	No.	%	No.	%	No.	%	No.	%	No.	%
New transplant patients	190	100	162	100	141	100	100	100	88	100
Glomerulonephritis	62	33	44	27	52	37	29	29	21	24
Diabetes Mellitus	32	17	29	18	22	16	9	9	10	11
Hypertension	51	27	39	24	31	22	24	24	15	17
Obstructive uropathy	4	2	3	2	4	3	1	1	0	0
ADPKD	5	3	3	2	1	1	1	1	0	0
Drugs/ toxic nephropathy	2	1	0	0	1	1	0	0	2	2
Hereditary nephritis	1	1	0	0	0	0	0	0	0	0
Unknown	83	44	50	31	44	31	37	37	40	45
Others	27	14	17	10	16	11	14	14	12	14

Table 14.3.1: Type of Renal Transplantation, 1999-2008

Year	1999		2000		2001		2002		2003	
	No.	%	No.	%	No.	%	No.	%	No.	%
Commercial cadaver	64	52	80	56	83	51	103	60	112	70
Commercial live donor	4	3	9	6	7	4	11	6	3	2
Live donor (genetically related)	40	33	21	15	32	20	33	19	25	16
Live donor (emotionally related)	5	4	6	4	4	2	3	2	5	3
Cadaver	10	8	27	19	37	23	22	13	15	9
Total	123	100	143	100	163	100	172	100	160	100

Year	2004		2005		2006		2007		2008	
	No.	%	No.	%	No.	%	No.	%	No.	%
Commercial cadaver	143	76	105	65	82	58	41	41	40	45
Commercial live donor	6	3	8	5	5	4	2	2	1	1
Live donor (genetically related)	21	11	37	23	24	17	20	20	22	25
Live donor (emotionally related)	2	1	3	1	4	3	11	12	3	4
Cadaver	17	9	9	6	26	18	25	25	22	25
Total	189	100	162	100	141	100	99	100	88	100

*Commercial Cadaver (China, India, other oversea) *Commercial live donor (living unrelated) *Cadaver (local)

Table 14.3.2: Biochemical data, 2006-2008

Biochemical parameters	Summary	2006	2007	2008
Creatinine, umol/L	N	1592	1686	1499
	Mean	135.7	131.8	131
	SD	81.3	77.6	80.2
	Median	120	116	113
	Minimum	21.7	36	29
	Maximum	1152	1186	1181
Hb, g/dL	N	1592	1686	1499
	Mean	12.7	12.8	12.9
	SD	1.9	1.9	1.9
	Median	12.8	12.8	12.9
	Minimum	3.3	4.4	6.2
	Maximum	19.8	18.7	18.6
Albumin, g/L	N	1592	1686	1499
	Mean	40	40	40
	SD	0.7	0.8	0.8
	Median	40	40	40
	Minimum	29	29	30
	Maximum	48	48	50
Calcium, mmol/L	N	1592	1686	1499
	Mean	2.3	2.3	2.3
	SD	0.2	0.2	0.2
	Median	2.3	2.3	2.3
	Minimum	1.1	1.4	1
	Maximum	3.1	3.2	3.5
Phosphate, mmol/L	N	1592	1686	1499
	Mean	1.1	1.1	1.1
	SD	0.2	0.3	0.3
	Median	1.1	1.1	1.1
	Minimum	0.5	0.5	0.5
	Maximum	3.5	3.9	3.2
Alkaline Phosphate (ALP), U/L	N	1592	1686	1499
	Mean	79.1	79.4	78.4
	SD	43.2	39.8	47.9
	Median	71	72	70
	Minimum	24	22	20
	Maximum	700	508	985

Biochemical parameters	Summary	2006	2007	2008
ALT, U/L	N	1592	1686	1499
	Mean	29.8	29.8	28.6
	SD	30.4	25.7	31
	Median	22	23	22
	Minimum	4	4	4
	Maximum	433	356	733
Total cholesterol, mmol/L	N	1592	1686	1499
	Mean	5.3	5.2	5.2
	SD	1	1	1
	Median	5.3	5.3	5.3
	Minimum	1.5	1.7	2
	Maximum	11.1	11.4	11.2
LDL cholesterol, mmol/L	N	1592	1686	1499
	Mean	3	3	2.9
	SD	0.8	0.8	0.8
	Median	3	3	3
	Minimum	1	1	0.9
	Maximum	11.1	8.9	7.7
HDL cholesterol, mmol/L	N	1592	1686	1499
	Mean	1.6	1.5	1.6
	SD	0.5	0.4	0.5
	Median	1.6	1.6	1.6
	Minimum	0.4	0.4	0.5
	Maximum	5.8	7.5	7.5
Systolic Blood Pressure, mmHg	N	1592	1686	1499
	Mean	130.7	131.6	129.4
	SD	15.9	15.7	16.1
	Median	130	130	130
	Minimum	66	80	80
	Maximum	210	210	245
Diastolic Blood Pressure, mmHg	N	1592	1686	1499
	Mean	78.9	78.8	77.5
	SD	9.8	9.4	9.7
	Median	80	80	80
	Minimum	30	20	20
	Maximum	120	116	133

Table 14.3.3: Medication data, 2006-2008

Medication data	Single drug treatment						Combined drug treatment					
	2006		2007		2008		2006		2007		2008	
	N	%	N	%	N	%	N	%	N	%	N	%
All	1482	100	1664	100	1359	100	1482	100	1664	100	1359	100
(i) Immunosuppressive drug(s) treatment												
Prednisolone	8	1	9	1	6	0	1444	97	1610	97	1321	97
Azathioprine	0	0	0	0	0	0	497	34	479	29	374	28
Cyclosporin A	5	0	8	0	2	0	1119	76	1190	72	938	69
Tacrolimus (FK506)	0	0	4	0	3	0	254	17	348	21	327	24
Mycophenolate Mofetil (MMF)	0	0	1	0	2	0	708	48	906	54	721	53
Rapamycin	0	0	0	0	1	0	7	0	33	2	30	2
Others	0	0	0	0	0	0	18	1	4	0	1	0
(ii) Non-Immunosuppressive drug(s) treatment												
Beta blocker	77	5	90	5	87	6	597	40	735	44	609	45
Calcium channel blocker	199	13	184	11	137	10	787	53	904	54	680	50
ACE inhibitor	39	3	38	2	29	2	292	20	384	23	282	21
AIIRB	27	2	18	1	17	1	141	10	210	13	137	10
Anti-lipid	156	11	95	6	87	6	679	46	731	44	616	45
Other anti-hypertensive	11	1	6	0	24	2	159	11	140	8	188	14

Table 14.4.1: Post-transplant complications, 2006-2008

Post transplant complications	Complication developed before transplant (regardless of complication after transplantation)						Complication developed only after transplantation					
	2006		2007		2008		2006		2007		2008	
	No.	%	No.	%	No.	%	No.	%	No.	%	No.	%
All patients	1592	100	1686	100	1499	100	1592	100	1686	100	1499	100
Diabetes (either as Primary Renal Disease or co-morbid)	216	14	230	14	204	14	125	8	112	7	112	7
Cancer	2	0	3	0	2	0	20	1	21	1	26	2
Cardiovascular disease + cerebrovascular disorder	73	5	72	4	61	4	45	3	54	3	70	5
Hypertension	1035	65	1062	63	927	62	354	22	450	27	400	27

*Hypertension: BP systolic >140 and BP diastolic >90
OR have either Beta blocker/ Calcium channel blocker / ACE inhibitor / AIIIRB / Other anti-hypertensive

Table 14.4.2: Transplant Patients Death Rate and Graft Loss, 1999-2008

Year	1999	2000	2001	2002	2003	2004	2005	2006	2007	2008
No. at risk	1145	1213	1291	1380	1466	1549	1638	1704	1728	1730
Transplant death	25	30	37	33	37	42	43	50	39	48
Transplant death rate %	2	2	3	2	3	3	3	3	2	3
Graft loss	37	32	40	39	42	44	21	38	37	32
Graft loss rate %	3	3	3	3	3	3	1	2	2	2
Acute rejection	0	0	0	0	3	19	14	18	12	0
Acute rejection rate %	0	0	0	0	0	1	1	1	1	0
All losses	62	62	77	72	79	86	64	88	76	80
All losses rate %	5	5	6	5	5	6	4	5	4	5

*Graft loss=graft failure

*All losses=death / graft loss (acute rejection happens concurrently with graft failure / death)

Figure 14.4.2(a): Transplant Recipient Death Rate, 1976-2008

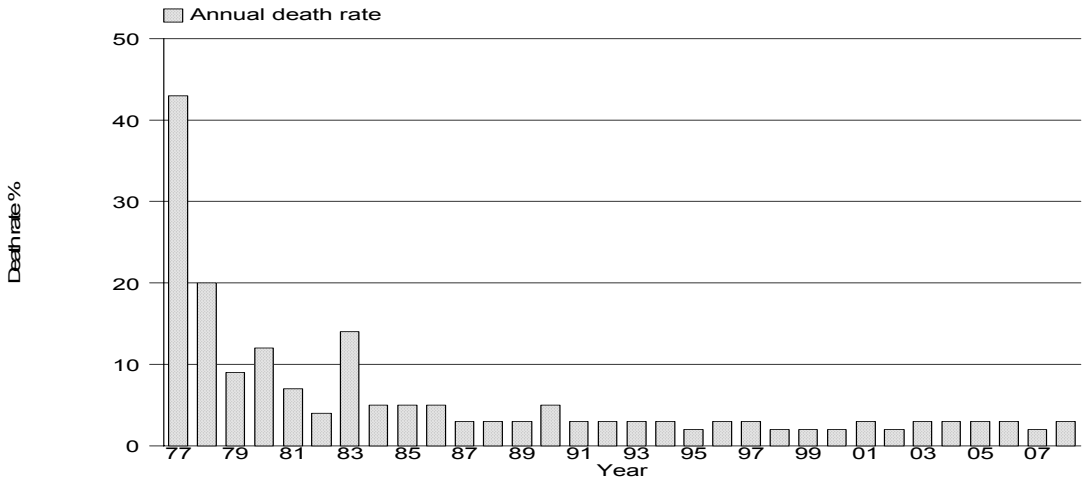


Figure 14.4.2(b): Transplant Recipient Graft Loss Rate, 1976-2008

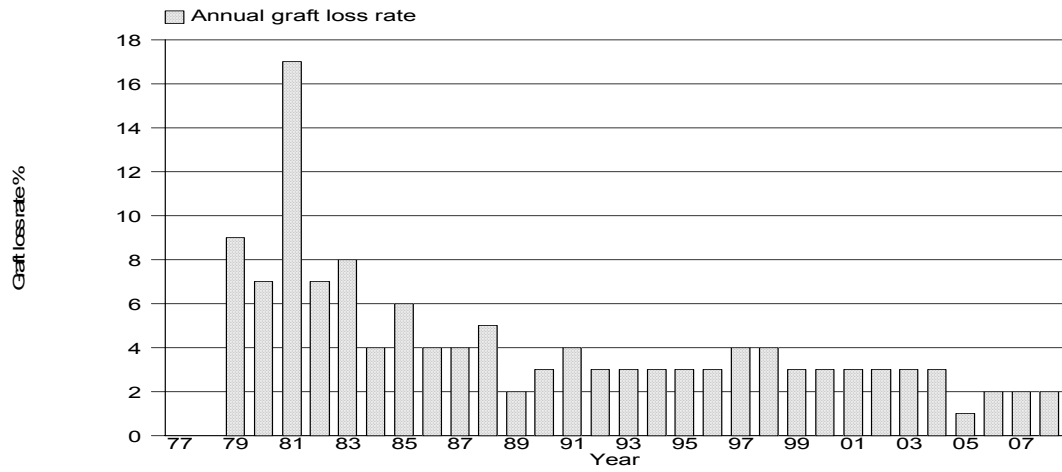


Table 14.4.3: Causes of Death in Transplant Recipients, 1999-2008

Year	1999		2000		2001		2002		2003	
	No.	%	No.	%	No.	%	No.	%	No.	%
Cardiovascular	4	13	10	29	7	16	5	15	9	23
Died at home	6	19	1	3	5	12	5	15	5	13
Infection	7	23	12	35	20	47	10	30	11	28
Graft failure	0	0	2	6	0	0	0	0	0	0
Cancer	3	10	2	6	6	14	4	12	6	15
Liver disease	3	10	1	3	1	2	3	9	2	5
Accidental death	1	3	1	3	1	2	1	3	0	0
Others	5	16	3	9	2	5	3	9	5	13
Unknown	2	6	2	6	1	2	2	6	2	5
TOTAL	31	100	34	100	43	100	33	100	40	100

Year	2004		2005		2006		2007		2008	
	No.	%	No.	%	No.	%	No.	%	No.	%
Cardiovascular	4	9	5	11	10	18	7	16	7	13
Died at home	6	13	5	11	7	13	5	11	12	23
Infection	11	24	22	50	22	40	15	34	14	26
Graft failure	3	7	0	0	0	0	4	9	1	2
Cancer	8	17	5	11	4	7	6	14	10	19
Liver disease	3	7	3	7	5	9	0	0	0	0
Accidental death	0	0	0	0	0	0	0	0	0	0
Others	10	22	3	7	4	7	3	7	8	15
Unknown	1	2	1	2	3	5	4	9	1	2
TOTAL	46	100	44	100	55	100	44	100	53	100

Table 14.4.4: Causes of Graft Failure, 1999-2008

Year	1999		2000		2001		2002		2003	
	No.	%	No.	%	No.	%	No.	%	No.	%
Rejection	23	62	19	59	25	61	23	56	21	47
Calcineurin toxicity	0	0	0	0	0	0	0	0	0	0
Other drug toxicity	0	0	0	0	0	0	0	0	0	0
Ureteric obstruction	0	0	0	0	0	0	0	0	0	0
Infection	0	0	1	3	2	5	0	0	2	4
Vascular causes	1	3	3	9	1	2	0	0	3	7
Recurrent/ de novo renal disease	0	0	0	0	2	5	2	5	2	4
Others	0	0	2	6	0	0	4	10	1	2
Unknown	13	35	7	22	11	27	12	29	16	36
TOTAL	37	100	32	100	41	100	41	100	45	100

Year	2004		2005		2006		2007		2008	
	No.	%	No.	%	No.	%	No.	%	No.	%
Rejection	33	70	18	75	28	65	26	68	26	72
Calcineurin toxicity	0	0	0	0	1	2	0	0	0	0
Other drug toxicity	1	2	0	0	0	0	0	0	0	0
Ureteric obstruction	0	0	0	0	0	0	1	3	0	0
Infection	1	2	1	4	3	7	1	3	2	6
Vascular causes	4	9	2	8	4	9	1	3	2	6
Recurrent/ de novo renal disease	1	2	0	0	1	2	0	0	0	0
Others	0	0	1	4	3	7	4	11	2	6
Unknown	7	15	2	8	3	7	5	13	4	11
TOTAL	47	100	24	100	43	100	38	100	36	100

Table 14.5.1: Patient survival, 1995-2008

Interval (years)	No.	% Survival	SE
0	1925	100	-
1	1689	95	1
3	1351	91	1
5	971	88	1
10	296	81	1
12	125	75	2

*No.=Number at risk

SE=standard error

Figure 14.5.1: Patient survival, 1995-2008

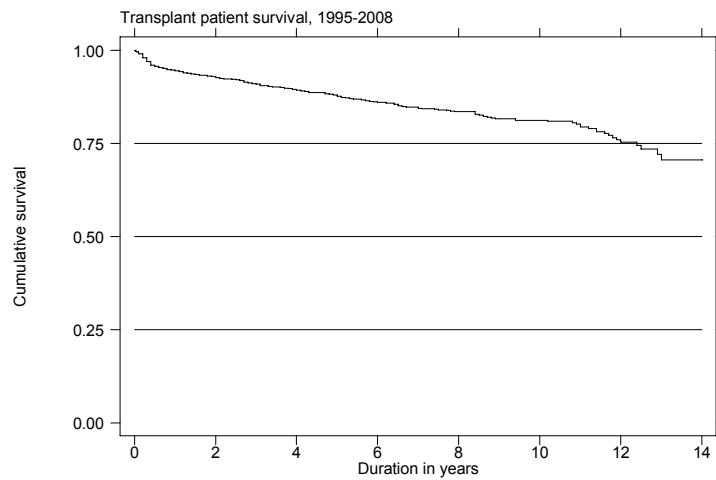


Table 14.5.2: Graft survival, 1995-2008

Interval (years)	No.	% Survival	SE
0	1925	100	-
1	1689	91	1
3	1351	85	1
5	971	80	1
10	296	66	1
12	125	57	2

*No.=Number at risk

SE=standard error

Figure 14.5.2: Graft survival, 1995-2008

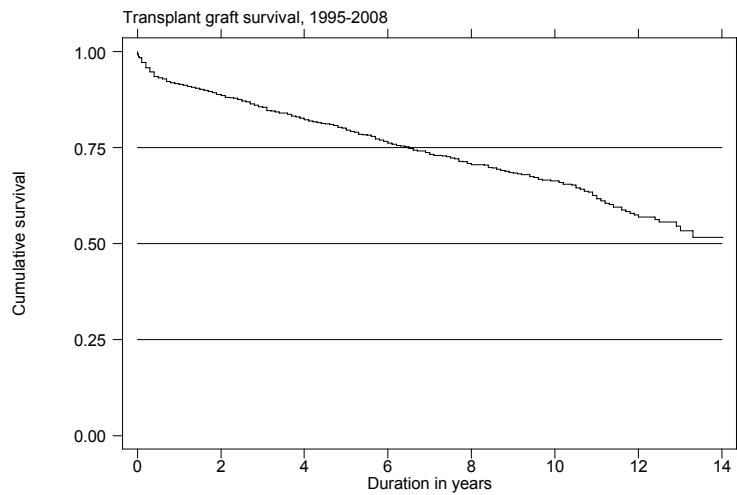


Table 14.5.3: Patient survival by type of transplant, 1995-2008

Type of Transplant Interval (years)	Commercial Cadaver			Commercial Live Donor			Live Donor			Cadaver		
	No.	% Survival	SE	No.	% Survival	SE	No.	% Survival	SE	No.	% Survival	SE
0	1125	100	-	89	100	-	454	100	-	235	100	-
1	1022	96	1	85	98	2	395	96	1	168	85	2
3	843	92	1	64	89	3	320	95	1	110	78	3
5	576	88	1	46	85	4	249	94	1	90	75	3
10	177	81	2	16	67	7	83	89	2	15	71	4
12	74	75	3	5	58	10	44	85	3	4	63	8

*No.=Number at risk

SE=standard error

Figure 14.5.3: Patient survival by type of transplant, 1995-2008

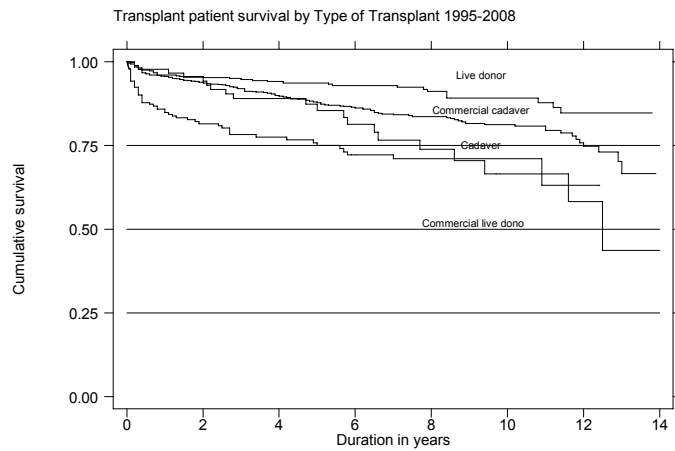


Table 14.5.4: Graft survival by type of transplant, 1995-2008

Type of Transplant Interval (years)	Commercial Cadaver			Commercial Live Donor			Live Donor			Cadaver		
	No.	% Survival	SE	No.	% Survival	SE	No.	% Survival	SE	No.	% Survival	SE
	1125	100	-	89	100	-	454	100	-	235	100	-
1	1022	94	1	85	97	2	395	92	1	168	77	3
3	843	89	1	64	81	4	320	88	2	110	67	3
5	576	82	1	46	74	5	249	84	2	90	62	3
10	177	70	2	16	54	7	83	68	3	15	53	5
12	74	60	3	5	35	9	44	60	4	4	47	7

*No.=Number at risk

SE=standard error

Figure 14.5.4: Graft survival by type of transplants, 1995-2008

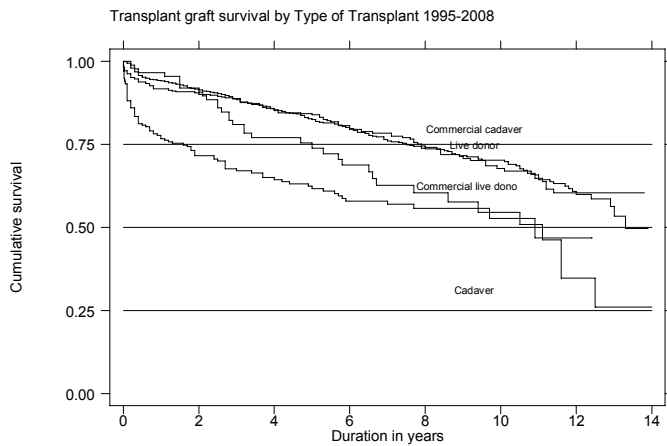


Table 14.5.5: Patient survival by year of transplant (Living related transplant, 1995-2008)

Year of Transplant Interval (years)	1995-2000			2001-2008		
	No.	% Survival	SE	No.	% Survival	SE
0	206	100	-	248	100	-
1	184	97	1	212	95	1
3	175	96	1	146	94	2
5	164	95	2	86	93	2
7	155	94	2	27	92	2

*No.=Number at risk

SE=standard error

Figure 14.5.5: Patient survival by year of transplant (Living related transplant, 1995-2008)

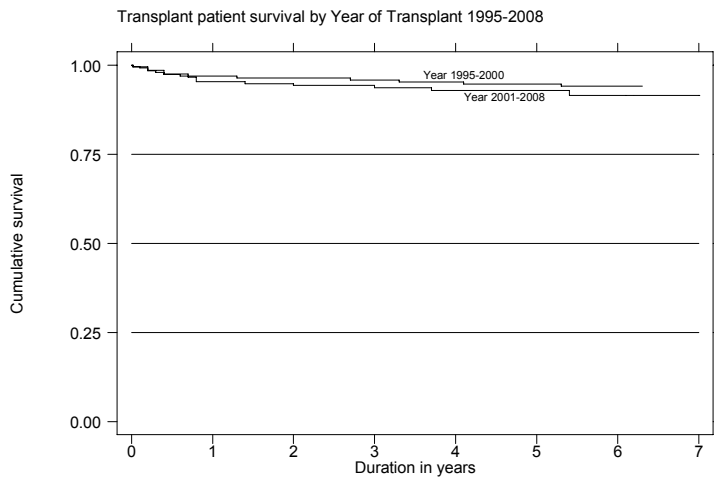


Table 14.5.6: Graft survival by year of transplant (Living related transplant, 1995-2008)

Year of Transplant Interval (years)	1994-1999			2000-2007		
	No.	% Survival	SE	No.	% Survival	SE
0	206	100	-	248	100	-
1	184	89	2	212	94	2
3	175	86	2	146	91	2
5	164	80	3	86	87	2
7	155	76	3	27	78	4

*No.=Number at risk

SE=standard error

Figure 14.5.6: Graft survival by year of transplant (Living related transplant, 1995-2008)

Transplant graft survival by Year of Transplant 1995-2008

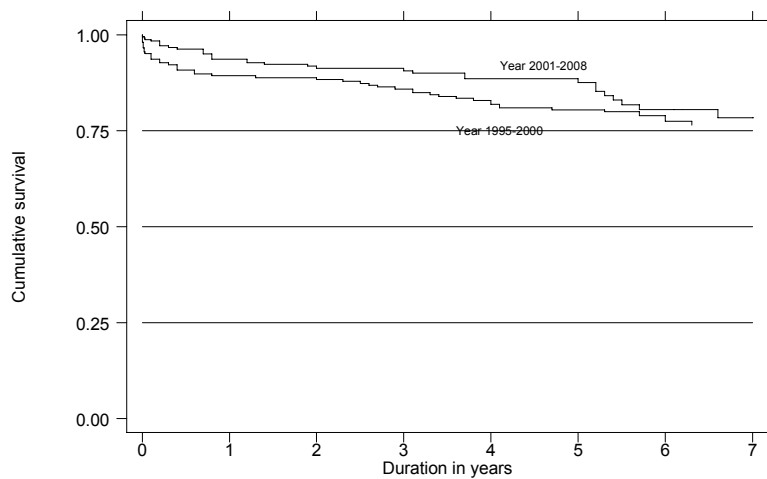


Table 14.5.7: Patient survival by year of transplant (Commercial cadaver transplant, 1995-2008)

Year of Transplant Interval (years)	1995-2000			2001-2008		
	No.	% Survival	SE	No.	% Survival	SE
0	417	100	-	708	100	-
1	394	96	1	630	95	1
3	373	93	1	473	91	1
5	336	88	2	240	87	1
7	305	85	2	57	82	2

*No.=Number at risk

SE=standard error

Figure 14.5.7: Patient survival by year of transplant (Commercial cadaver transplant, 1995-2008)

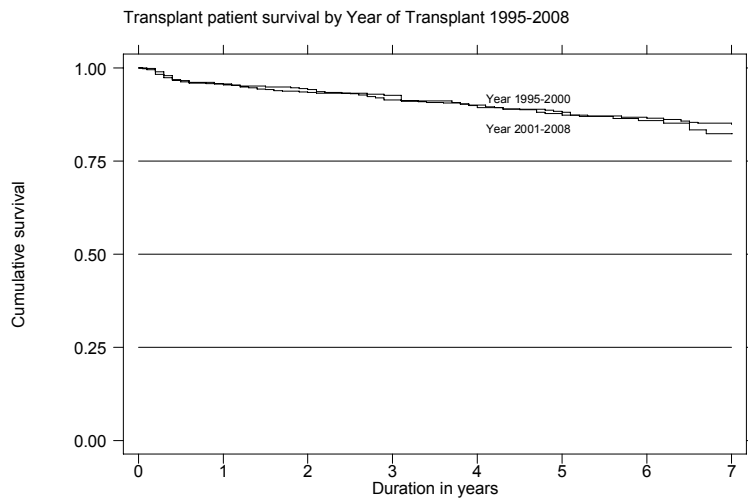


Table 14.5.8: Graft survival by year of transplant (Commercial cadaver transplant, 1995-2008)

Year of Transplant Interval (years)	1995-2000			2001-2008		
	No.	% Survival	SE	No.	% Survival	SE
0	417	100	-	708	100	-
1	394	94	1	630	94	1
3	373	89	2	473	89	1
5	336	82	2	240	83	2
7	305	75	2	57	76	3

*No.=Number at risk

SE=standard error

Figure 14.5.8: Graft survival by year of transplant (Commercial cadaver transplant, 1995-2008)

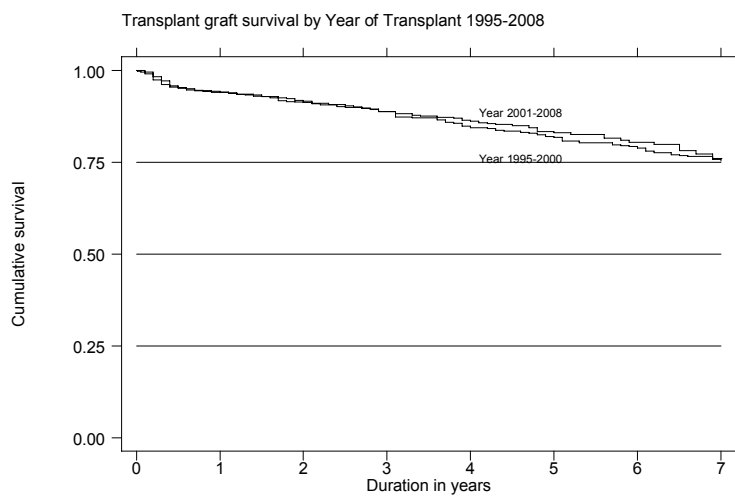


Table 14.6.1: Risk factors for IHD in renal transplant recipients at year 2006, 2007 and 2008

	2006	2007	2008
Diabetes	21 (1.4)	25 (1.6)	17 (1.2)
Hypertension**	455 (31.1)	590 (37.5)	514 (36.8)
CKD	177 (12.1)	127 (8.1)	116 (8.3)
Diabetes + Hypertension**	155 (10.6)	174 (11.0)	172 (12.3)
Diabetes + CKD	18 (1.2)	11 (0.7)	21 (1.5)
CKD + Hypertension**	490 (33.5)	516 (32.8)	451 (32.3)
Diabetes + CKD + Hypertension**	147 (10.0)	132 (8.4)	106 (7.6)

**Hypertension: BP systolic > 140 and BP diastolic > 90 OR have either Beta blocker / Calcium channel blocker / ACE inhibitor / AIIIRB /

Other anti-hypertensive drugs

GFR (mL/min/1.73m²) = 1.2*(140-age(year))*weight(kg) / creatinine (µmol/L) if male

GFR (mL/min/1.73m²) = 0.85*(1.2*(140-age(year))*weight(kg) / creatinine (µmol/L) if female

CKD stage III-GFR, 30-60

CKD stage IV-GFR, 15-30

CKD stage V-GFR, <15

Figure 14.6.1(a); Venn Diagram for Pre and Post Transplant Complications (in %) at year 2006

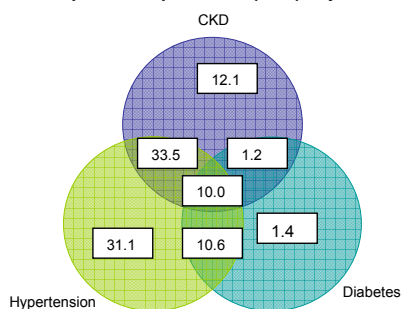


Figure 14.6.1(b); Venn Diagram for Pre and Post Transplant Complications (in %) at year 2007

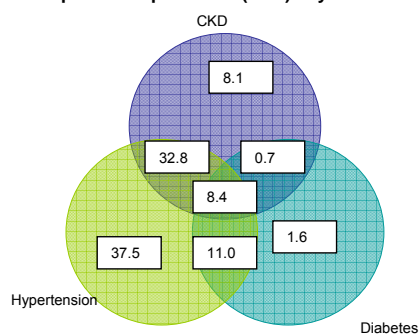


Figure 14.6.1 (c): Venn Diagram for Pre and Post Transplant Complications (in %) at year 2008

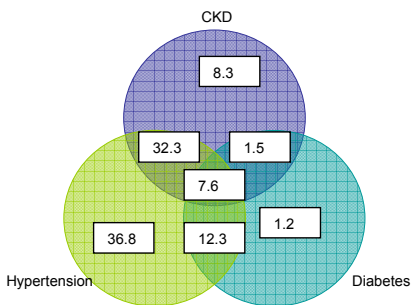


Table 14.6.2(a): Systolic BP, 2006-2008

Year	2006		2007		2008	
	No.	(%)	No.	(%)	No.	(%)
Systolic BP <120	249	(15.64)	240	(14.23)	279	(18.61)
Systolic BP <130	395	(24.81)	392	(23.25)	367	(24.48)
Systolic BP 130-139	483	(30.34)	529	(31.38)	441	(29.42)
Systolic BP 140-159	353	(22.17)	409	(24.26)	329	(21.95)
Systolic BP 160-179	93	(5.84)	99	(5.87)	73	(4.87)
Systolic BP >=180	19	(1.19)	17	(1.01)	10	(0.67)

Figure 14.6.2(a): Systolic BP, 2006-2008

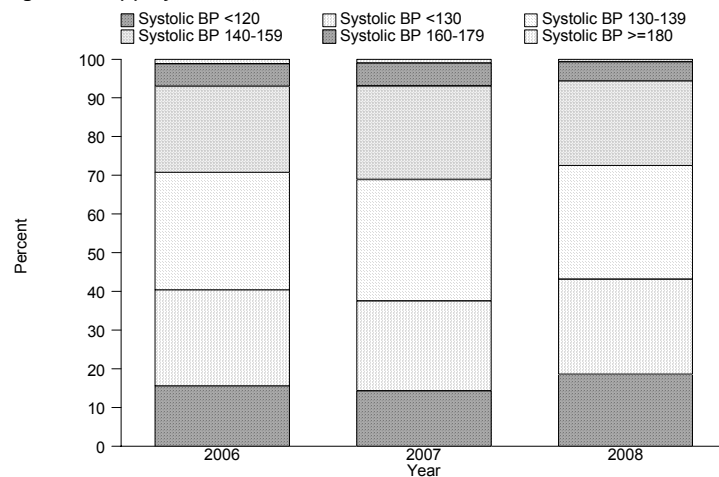


Table 14.6.2(b): Diastolic BP, 2006-2008

Year	2006		2007		2008	
	No.	(%)	No.	(%)	No.	(%)
Diastolic BP <80	624	(39.20)	698	(41.40)	714	(47.63)
Diastolic BP <85	586	(36.81)	609	(36.12)	514	(34.29)
Diastolic BP 85-89	73	(4.59)	74	(4.39)	50	(3.34)
Diastolic BP 90-99	244	(15.33)	261	(15.48)	195	(13.01)
Diastolic BP 100-109	61	(3.83)	39	(2.31)	21	(1.40)
Diastolic BP >=110	4	(0.25)	5	(0.30)	5	(0.33)

Figure 14.6.2(b): Diastolic BP, 2006-2008

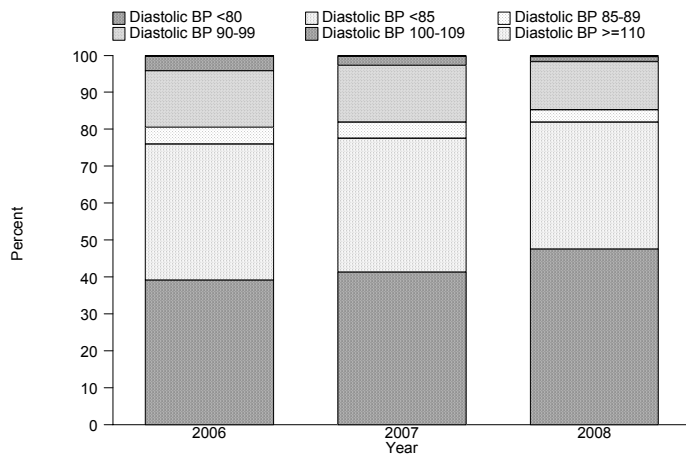


Table 14.6.3: CKD stages, 2006-2008

Year	2006		2007		2008	
	No.	(%)	No.	(%)	No.	(%)
CKD stage 1	116	(7.33)	180	(10.79)	145	(9.82)
CKD stage 2	533	(33.67)	592	(35.49)	561	(37.98)
CKD stage 3	805	(50.85)	760	(45.56)	642	(43.47)
CKD stage 4	107	(6.76)	113	(6.77)	106	(7.18)
CKD stage 5	22	(1.39)	23	(1.38)	23	(1.56)

Figure 14.6.3: CKD stages by year

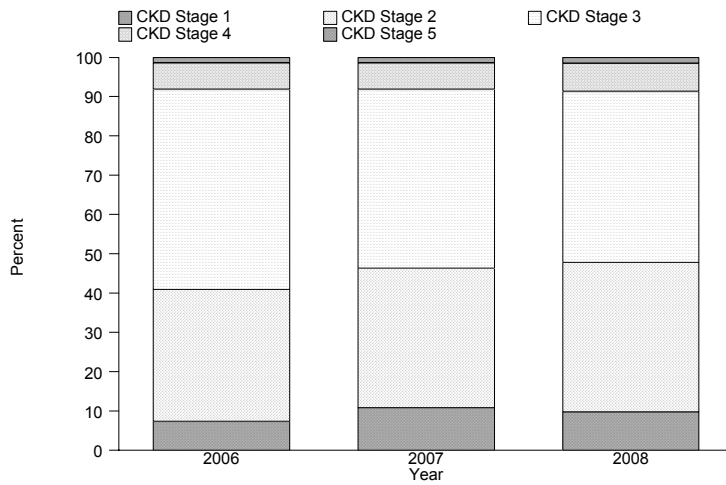


Table 14.6.4: BMI, 2006-2008

Year	2006		2007		2008	
	No.	(%)	No.	(%)	No.	(%)
BMI <20	242	(15.20)	253	(15.01)	244	(16.28)
BMI 20-25	647	(40.64)	658	(39.03)	588	(39.23)
BMI 25-30	498	(31.28)	533	(31.61)	455	(30.35)
BMI > 30	205	(12.88)	242	(14.35)	212	(14.14)

Figure 14.6.4: BMI by year

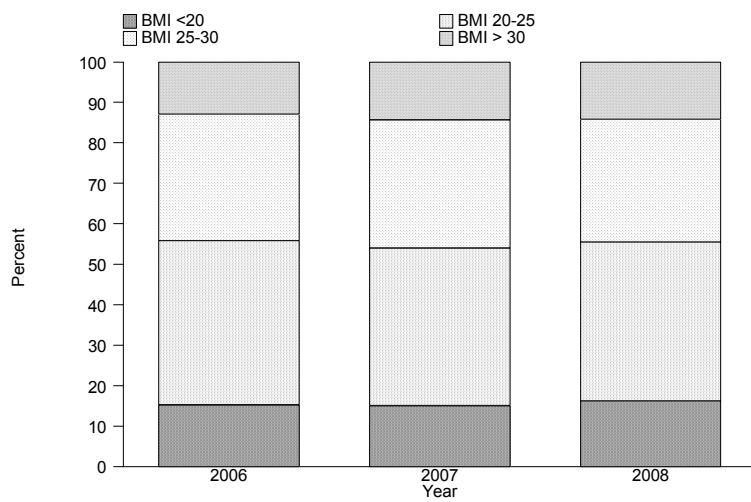


Table 14.6.5(a): LDL, 2006-2008

Year	2006		2007		2008	
	No.	(%)	No.	(%)	No.	(%)
LDL < 2.6	492	(30.90)	527	(31.26)	534	(35.62)
LDL 2.6-3.4	738	(46.36)	778	(46.14)	669	(44.63)
LDL >= 3.4	362	(22.74)	381	(22.60)	296	(19.75)

Figure 14.6.5(a): LDL, 2006-2008

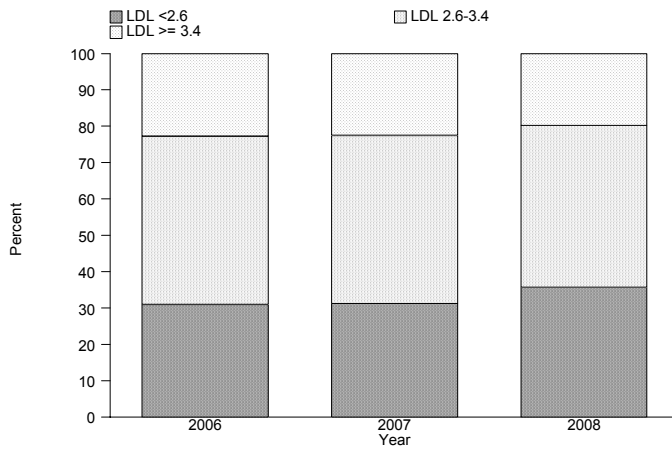


Table 14.6.5(b): Total Cholesterol, 2006-2008

Year	2006		2007		2008	
	No.	(%)	No.	(%)	No.	(%)
Total Cholesterol <4.1	160	(10.05)	210	(12.46)	184	(12.27)
Total Cholesterol 4.1-5.1	490	(30.78)	539	(31.97)	476	(31.75)
Total Cholesterol 5.1-6.2	700	(43.97)	719	(42.65)	629	(41.96)
Total Cholesterol 6.2- 7.2	173	(10.87)	159	(9.43)	143	(9.54)
Total Cholesterol > 7.2	69	(4.33)	59	(3.50)	67	(4.47)

Figure 14.6.5(b): Total Cholesterol, 2006-2008



Table 14.6.5(c): HDL, 2006-2008

Year	2006		2007		2008	
	No.	(%)	No.	(%)	No.	(%)
HDL <1	104	(6.53)	108	(6.41)	93	(6.20)
HDL 1-1.3	302	(18.97)	350	(20.76)	338	(22.55)
HDL >1.3	1186	(74.50)	1228	(72.84)	1068	(71.25)

Figure 14.6.5(c): HDL by year



Table 14.6.6(a): Treatment for hypertension, 2006-2008

Year	No.	% on anti-hypertensives	% no 1 anti-hypertensive drug	% on 2 anti-hypertensives	% on 3 anti-hypertensives
2006	1592	86	34	26	17
2007	1686	85	25	31	21
2008	1499	86	27	31	21

Table 14.6.6(b): Distribution of Systolic BP without anti-hypertensives, 2006-2008

Year	No.	Mean	SD	Median	LQ	UQ	% Patients ≥ 160 mmHg
2006	189	123.8	14.4	120	117	130	4
2007	196	125.2	16.5	120	113	134	4
2008	171	124	15.6	120	110	130	4

Table 14.6.6(c): Distribution of Diastolic BP without anti-hypertensives, 2006-2008

Year	No.	Mean	SD	Median	LQ	UQ	% patients ≥ 90 mmHg
2006	189	76.4	10.3	80	70	80	11
2007	196	76.6	10	80	70	80	12
2008	170	75.2	10.2	80	70	80	11

Table 14.6.6(d): Distribution of Systolic BP on anti-hypertensives, 2006-2008

Year	No.	Mean	SD	Median	LQ	UQ	% Patients ≥ 160mmHg
2006	1334	131.7	16.3	130	120	140	8
2007	1388	132.6	16	130	120	140	8
2008	1241	129.9	16.6	130	120	140	6

Table 14.6.6(e): Distribution of Diastolic BP on anti-hypertensives, 2006-2008

Year	No.	Mean	SD	Median	LQ	UQ	% Patients ≥ 90 mmHg
2006	1334	79.2	9.9	80	70	86	22
2007	1387	79.1	9.6	80	70	85	20
2008	1227	77.6	9.9	80	70	80	17

Table 14.7.1: Cumulative distribution of QoL-Index score in Transplant recipients 1999 - 2008

	QoL score
Number of patients	1179
Centile	
0	0
0.05	9
0.1	9
0.25 (LQ)	10
0.5 (median)	10
0.75 (UQ)	10
0.9	10
0.95	10
1	10

Figure 14.7.1: Cumulative distribution of QoL-Index score in Transplant recipients, 1999 - 2008

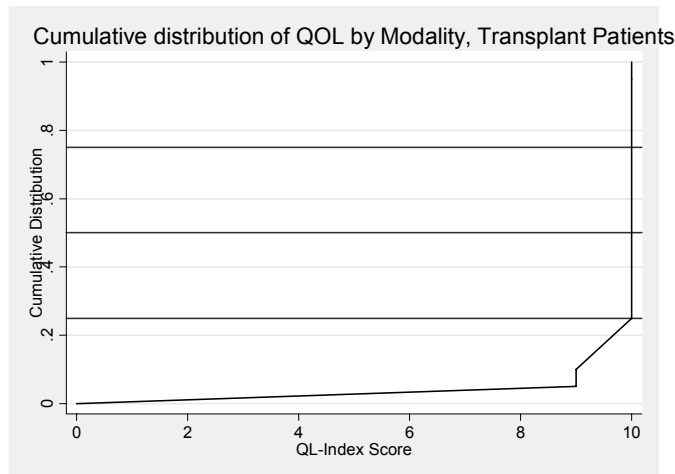


Table 14.7.2: Cumulative distribution of QoL-Index score in relation to Diabetes mellitus, Transplant recipients 1999 - 2008

Diabetes mellitus	No	Yes
Number of patients	1054	125
Centile		
0	0	0
0.05	9	7
0.1	10	8
0.25 (LQ)	10	9
0.5 (median)	10	10
0.75 (UQ)	10	10
0.9	10	10
0.95	10	10
1	10	10

Figure 14.7.2: Cumulative distribution of QoL-Index score in relation to Diabetes mellitus, Transplant recipients 1999 – 2008

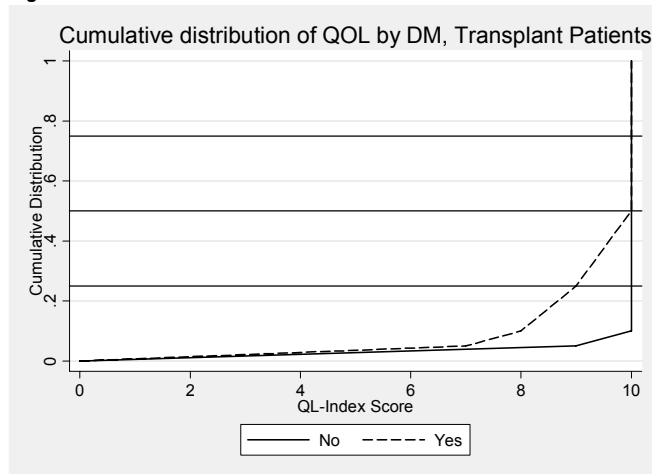


Table 14.7.3: Cumulative distribution of QoL-Index score in relation to Gender, Transplant recipients 1999-2008

Gender	Male	Female
Number of patients	730	449
Centile		
0	0	0
0.05	9	9
0.1	10	9
0.25 (LQ)	10	10
0.5 (median)	10	10
0.75 (UQ)	10	10
0.9	10	10
0.95	10	10
1	10	10

Figure 14.7.3: Cumulative distribution of QoL-Index score in relation to Gender, Transplant recipients 1999 – 2008

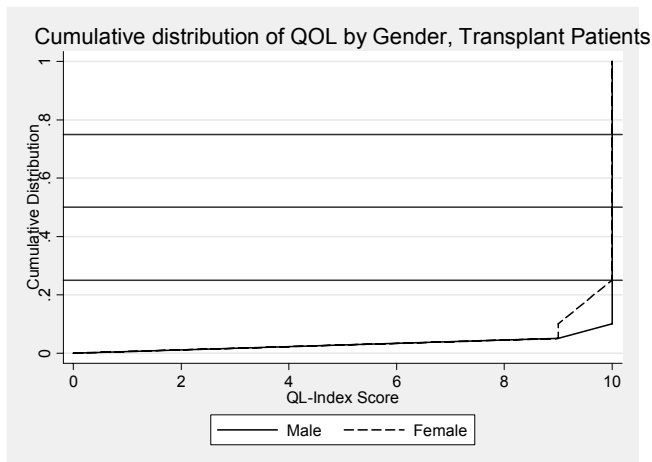


Table 14.7.4: Cumulative distribution of QoL-Index score in relation to Age, Transplant recipients 1999-2008

Age group (years)	<20	20-39	40-59	≥60
Number of patients	117	472	515	75
Centile				
0	0	0	0	0
0.05	9	9	8	7
0.1	10	10	9	8
0.25 (LQ)	10	10	10	9
0.5 (median)	10	10	10	10
0.75 (UQ)	10	10	10	10
0.9	10	10	10	10
0.95	10	10	10	10
1	10	10	10	10

Figure 14.7.4: Cumulative distribution of QoL-Index score in relation to Age, Transplant recipients 1999-2008

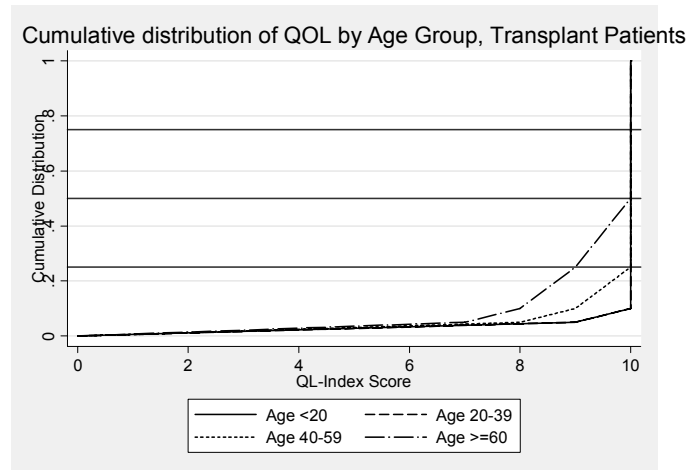


Table 14.7.5: Cumulative distribution of QoL-Index score in relation to Year of entry, Transplant recipients 1999-2008

Year of Entry	1999	2000	2001	2002	2003	2004	2005	2006	2007	2008
Number of patients	101	110	126	143	136	167	137	128	76	55
Centile										
0	0	0	0	0	0	0	0	0	0	0
0.05	9	8	9	9	8	9	9	9	7	6
0.1	10	9	9	10	9	10	10	10	9	8
0.25 (LQ)	10	10	10	10	10	10	10	10	10	10
0.5 (median)	10	10	10	10	10	10	10	10	10	10
0.75 (UQ)	10	10	10	10	10	10	10	10	10	10
0.9	10	10	10	10	10	10	10	10	10	10
0.95	10	10	10	10	10	10	10	10	10	10
1	10	10	10	10	10	10	10	10	10	10

Figure 14.7.5: Cumulative distribution of QoL-Index score in relation to Year of entry, Transplant recipients 1999 – 2008

Cumulative distribution of QOL by Year of Entry, Transplant Patients

