

# **CHAPTER 4**

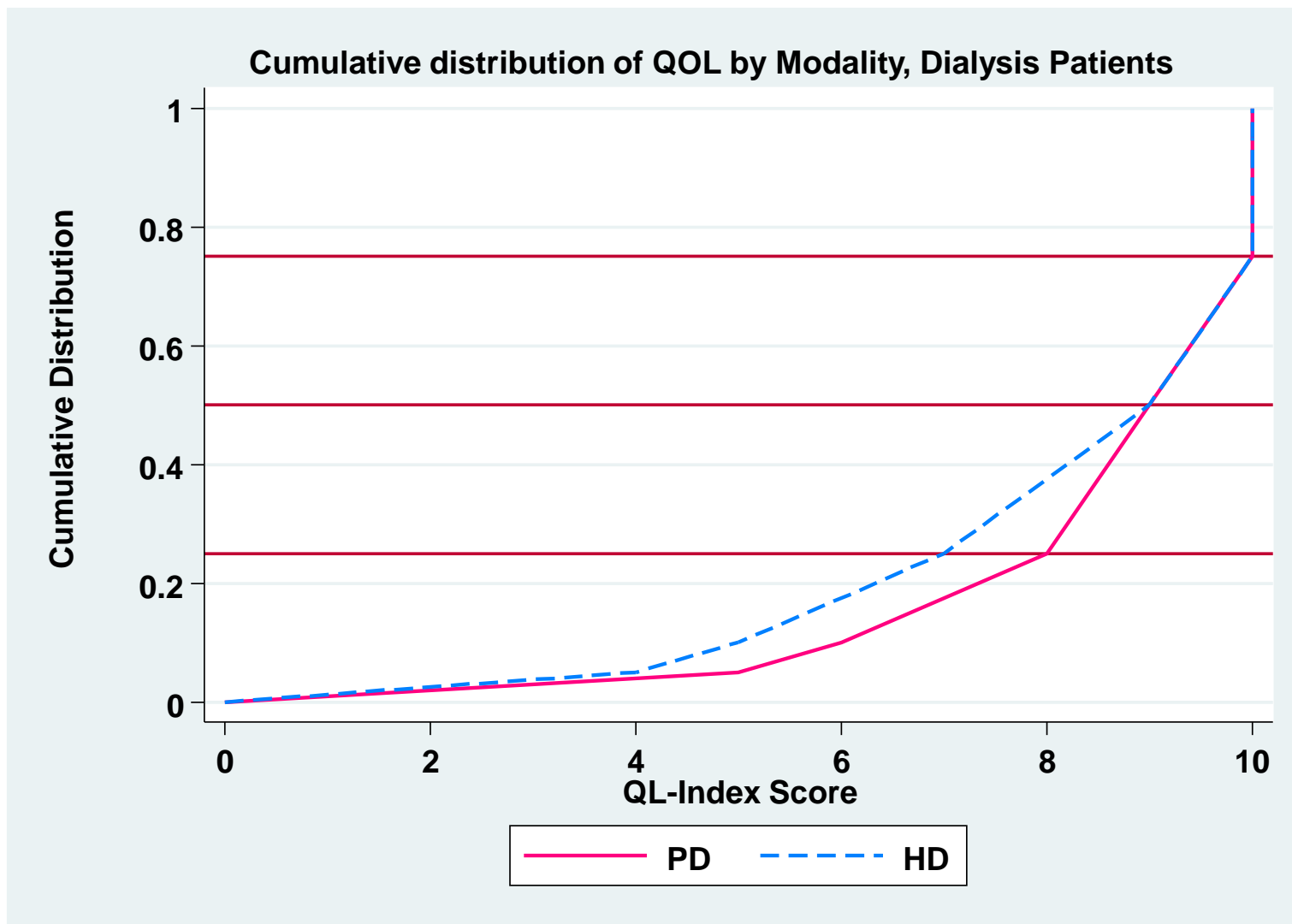
## **Quality Of Life and Rehabilitation Outcomes of Patients on Dialysis**

Liu Wen Jiun  
Chew Thian Fook  
Christopher Lim Thiam Seong  
Zaki Morad B Mohd Zaher

**Table 4.1: Cumulative distribution of QoL-Index score in relation to dialysis modality, All dialysis patients 2001-2010**

<b>Dialysis modality</b>	<b>PD</b>	<b>HD</b>
<b>Number of patients</b>	<b>4160</b>	<b>23403</b>
<b>Centile</b>		
<b>0</b>	<b>0</b>	<b>0</b>
<b>0.05</b>	<b>5</b>	<b>4</b>
<b>0.1</b>	<b>6</b>	<b>5</b>
<b>0.25 (LQ)</b>	<b>8</b>	<b>7</b>
<b>0.5 (median)</b>	<b>9</b>	<b>9</b>
<b>0.75 (UQ)</b>	<b>10</b>	<b>10</b>
<b>0.9</b>	<b>10</b>	<b>10</b>
<b>0.95</b>	<b>10</b>	<b>10</b>
<b>1</b>	<b>10</b>	<b>10</b>

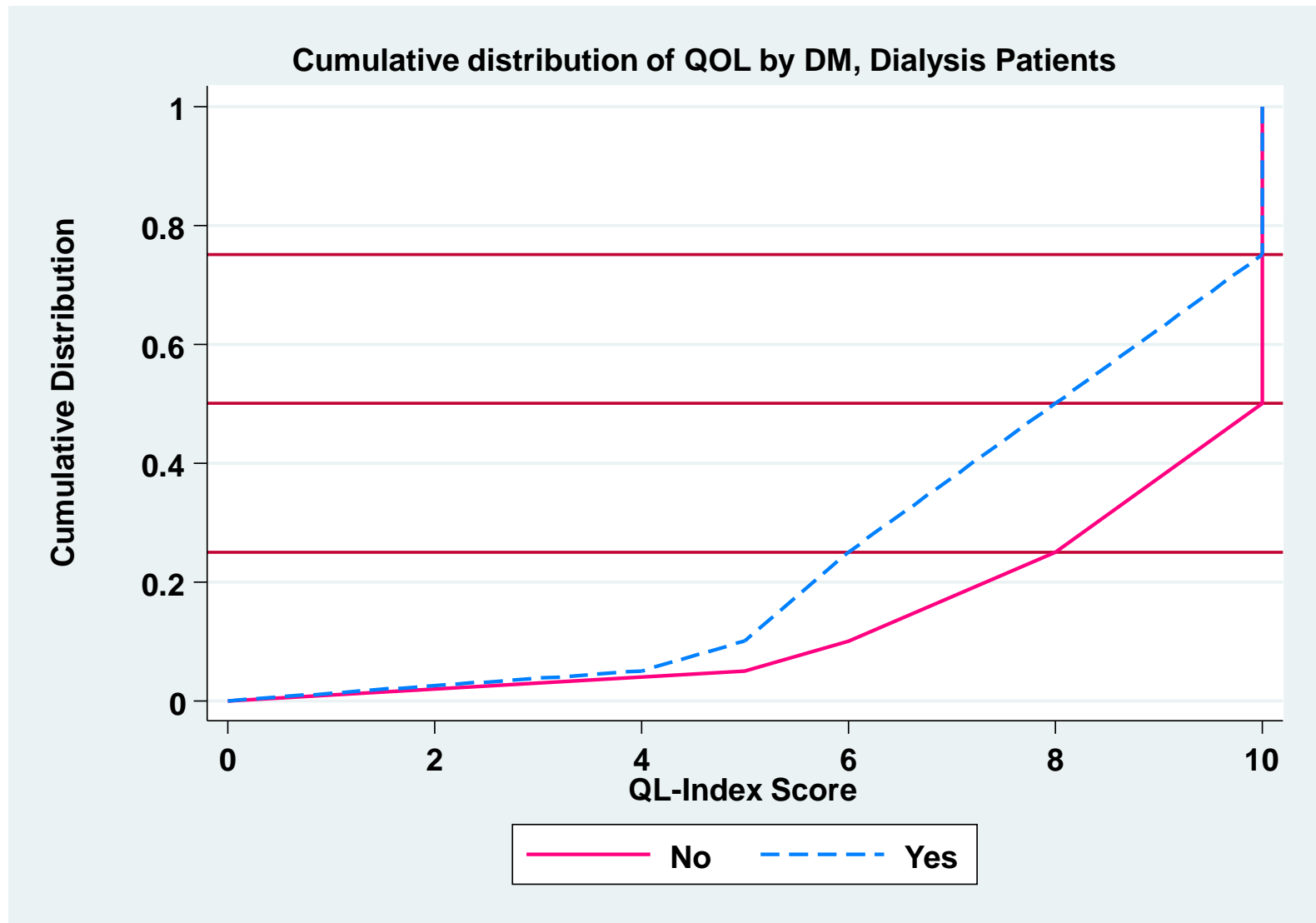
**Figure 4.1: Cumulative distribution of QoL-Index score in relation to Dialysis Modality, All Dialysis patients 2001-2010**



**Table 4.2: Cumulative distribution of QoL-Index score in relation to DM, All dialysis patients 2001-2010**

<b>Diabetes mellitus</b>	<b>No</b>	<b>Yes</b>
<b>Number of patients</b>	<b>13351</b>	<b>14212</b>
<b>Centile</b>		
<b>0</b>	<b>0</b>	<b>0</b>
<b>0.05</b>	<b>5</b>	<b>4</b>
<b>0.1</b>	<b>6</b>	<b>5</b>
<b>0.25 (LQ)</b>	<b>8</b>	<b>6</b>
<b>0.5 (median)</b>	<b>10</b>	<b>8</b>
<b>0.75 (UQ)</b>	<b>10</b>	<b>10</b>
<b>0.9</b>	<b>10</b>	<b>10</b>
<b>0.95</b>	<b>10</b>	<b>10</b>
<b>1</b>	<b>10</b>	<b>10</b>

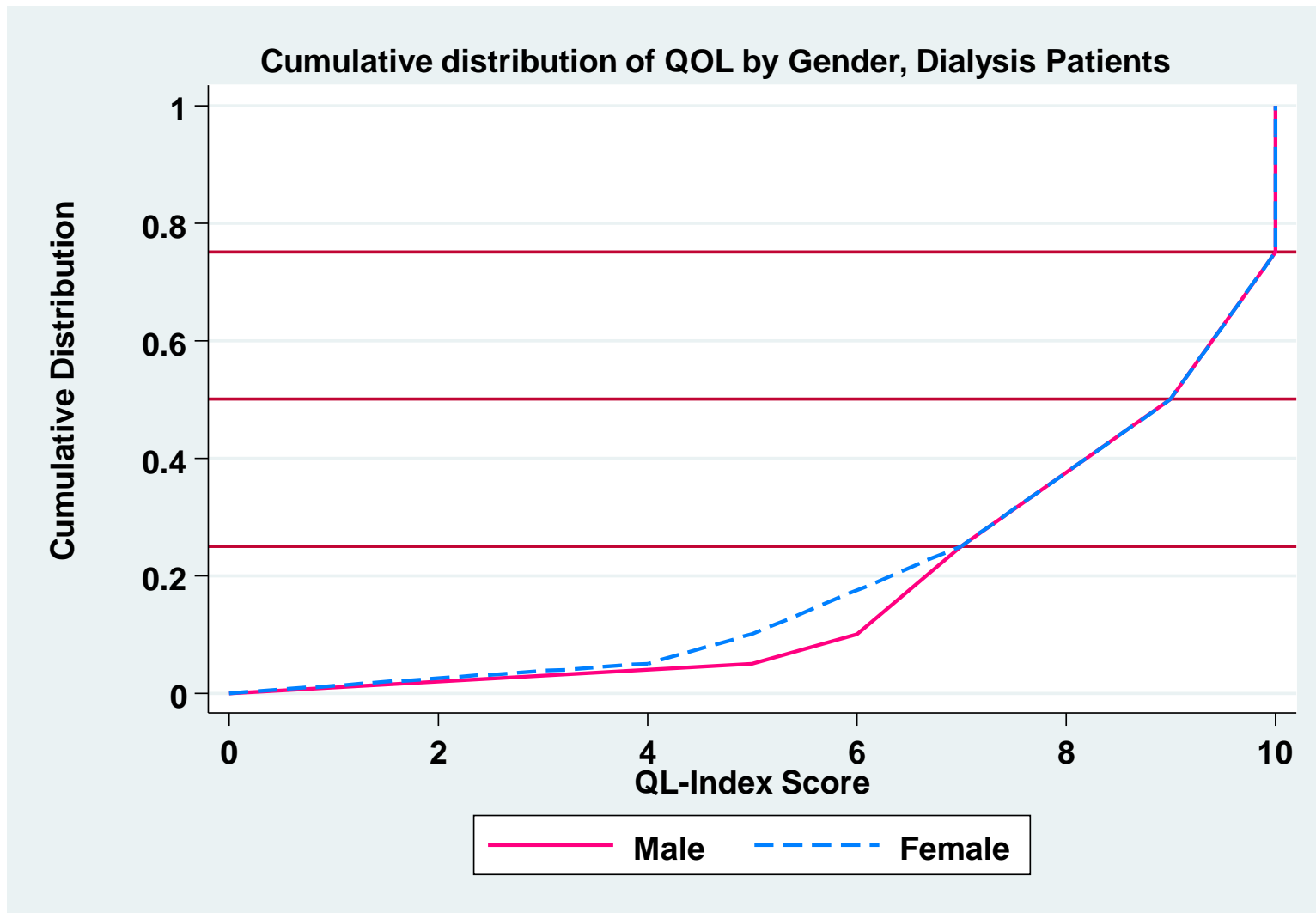
**Figure 4.2: Cumulative distribution of QoL-Index score in relation to DM, All Dialysis patients, 2001-2010**



**Table 4.3: Cumulative distribution of QoL-index score in relation to Gender, All Dialysis patients 2001-2010**

<b>Gender</b>	<b>Male</b>	<b>Female</b>
<b>Number of patients</b>	<b>15252</b>	<b>12311</b>
<b>Centile</b>		
<b>0</b>	<b>0</b>	<b>0</b>
<b>0.05</b>	<b>5</b>	<b>4</b>
<b>0.1</b>	<b>6</b>	<b>5</b>
<b>0.25 (LQ)</b>	<b>7</b>	<b>7</b>
<b>0.5 (median)</b>	<b>9</b>	<b>9</b>
<b>0.75 (UQ)</b>	<b>10</b>	<b>10</b>
<b>0.9</b>	<b>10</b>	<b>10</b>
<b>0.95</b>	<b>10</b>	<b>10</b>
<b>1</b>	<b>10</b>	<b>10</b>

**Figure 4.3: Cumulative distribution of QoL-Index score in relation to Gender, All Dialysis patients, 2001-2010**

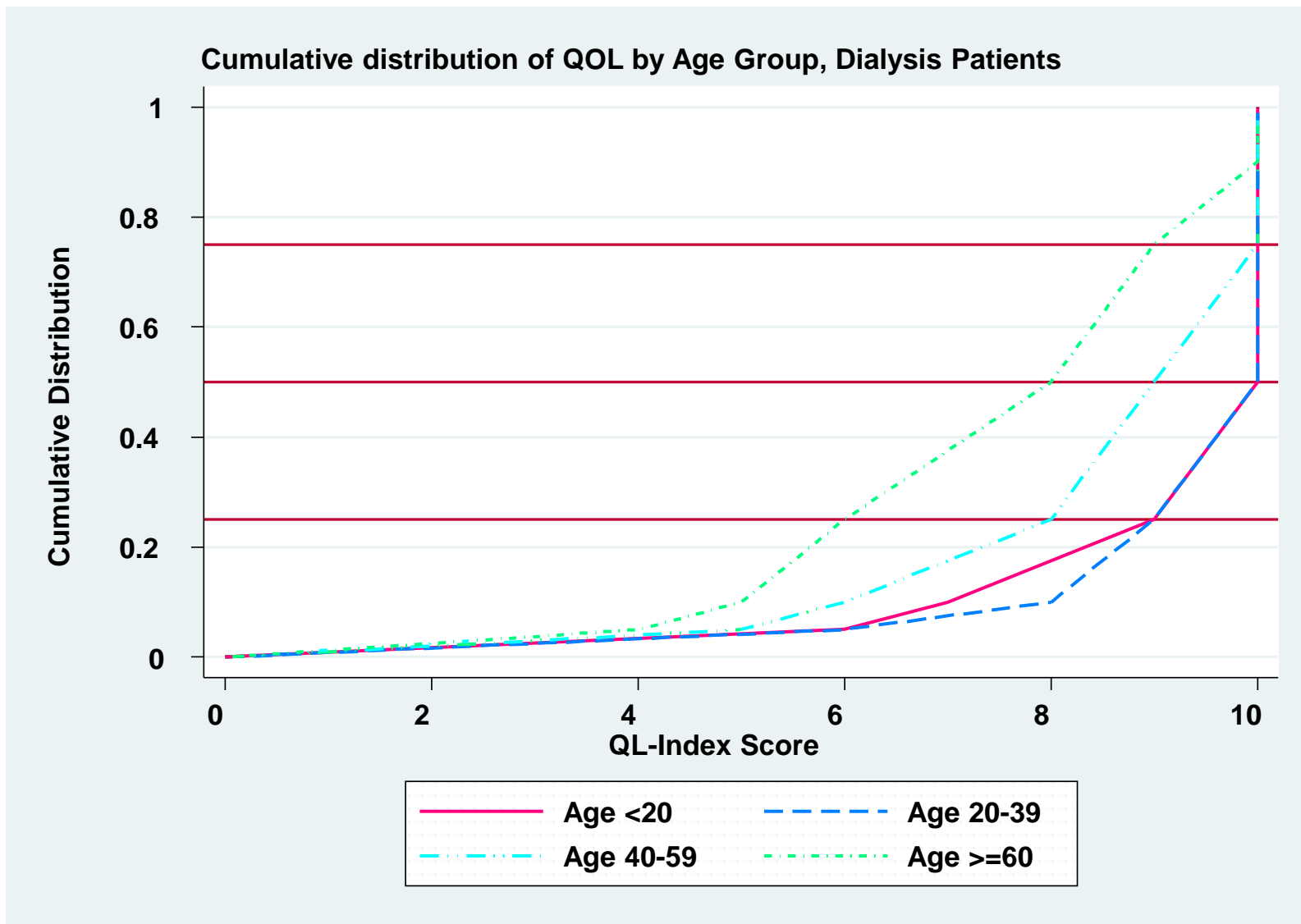


**Table 4.4: Cumulative distribution of QoL-index score in relation to Age, All Dialysis patients 2001-2010**

<b>Age group</b>	<b>&lt;20</b>	<b>20-39</b>	<b>40-59</b>	<b>&gt;=60</b>
<b>Number of patients</b>	<b>888</b>	<b>4146</b>	<b>13059</b>	<b>9470</b>
<b>Centile</b>				
<b>0</b>	<b>0</b>	<b>0</b>	<b>0</b>	<b>0</b>
<b>0.05</b>	<b>6</b>	<b>6</b>	<b>5</b>	<b>4</b>
<b>0.1</b>	<b>7</b>	<b>7</b>	<b>6</b>	<b>5</b>
<b>0.25 (LQ)</b>	<b>9</b>	<b>9</b>	<b>7</b>	<b>6</b>
<b>0.5 (median)</b>	<b>10</b>	<b>10</b>	<b>9</b>	<b>8</b>
<b>0.75 (UQ)</b>	<b>10</b>	<b>10</b>	<b>10</b>	<b>9</b>
<b>0.9</b>	<b>10</b>	<b>10</b>	<b>10</b>	<b>10</b>
<b>0.95</b>	<b>10</b>	<b>10</b>	<b>10</b>	<b>10</b>
<b>1</b>	<b>10</b>	<b>10</b>	<b>10</b>	<b>10</b>



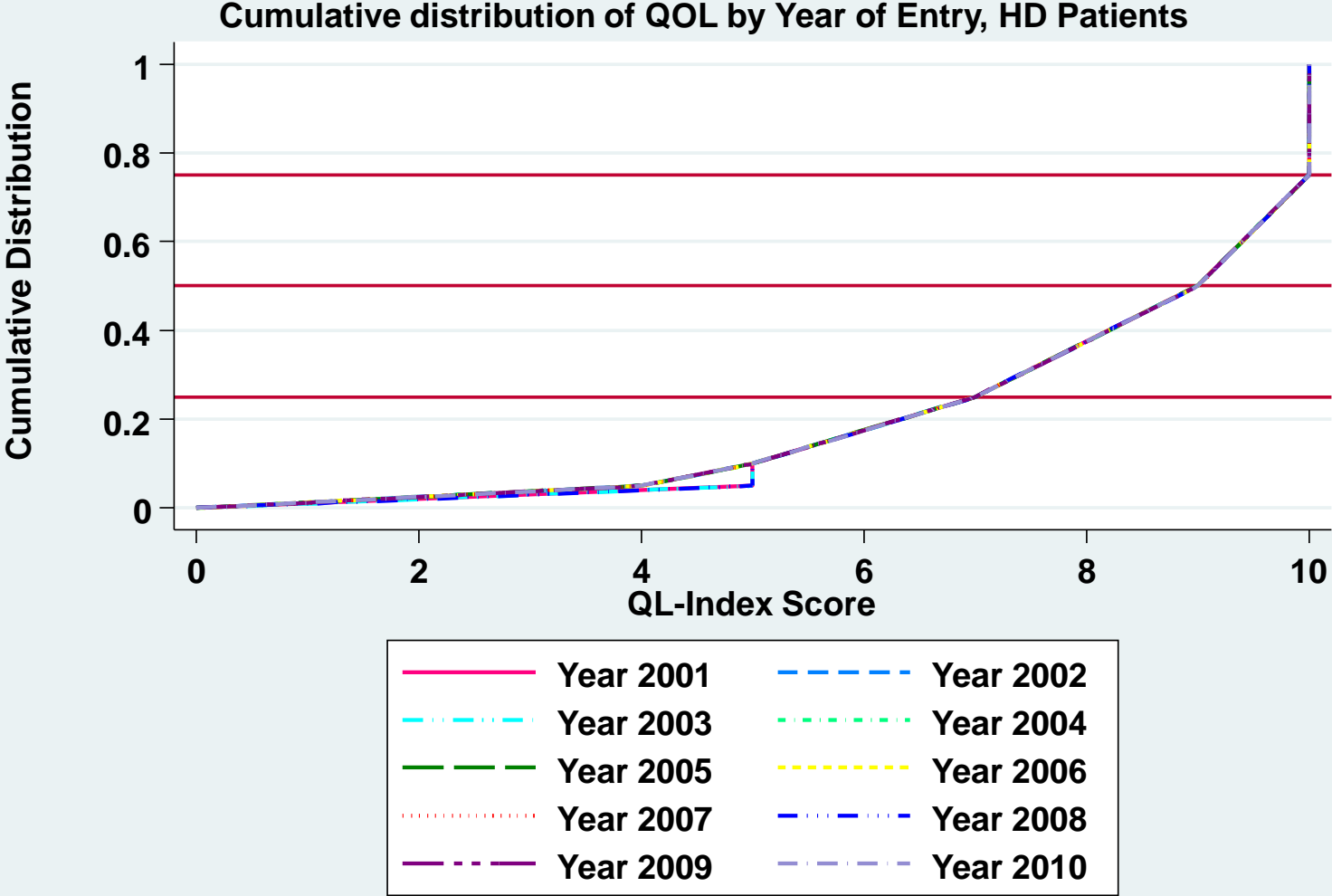
**Figure 4.4: Cumulative distribution of QoL-Index score in relation to Age, All Dialysis patients, 2001-2010**



**Table 4.5: Cumulative distribution of QoL-Index score in relation to year of entry, HD patients 2001-2010**

<b>Year of Entry</b>	<b>2001</b>	<b>2002</b>	<b>2003</b>	<b>2004</b>	<b>2005</b>	<b>2006</b>	<b>2007</b>	<b>2008</b>	<b>2009</b>	<b>2010</b>
<b>Number of patients</b>	<b>1449</b>	<b>1668</b>	<b>1739</b>	<b>2098</b>	<b>2211</b>	<b>2606</b>	<b>2761</b>	<b>3153</b>	<b>3243</b>	<b>2475</b>
<b>Centile</b>										
<b>0</b>	<b>0</b>	<b>0</b>	<b>0</b>	<b>0</b>	<b>0</b>	<b>0</b>	<b>0</b>	<b>0</b>	<b>0</b>	<b>0</b>
<b>0.05</b>	<b>5</b>	<b>4</b>	<b>5</b>	<b>4</b>	<b>4</b>	<b>4</b>	<b>4</b>	<b>5</b>	<b>4</b>	<b>4</b>
<b>0.1</b>	<b>5</b>	<b>5</b>	<b>5</b>	<b>5</b>	<b>5</b>	<b>5</b>	<b>5</b>	<b>5</b>	<b>5</b>	<b>5</b>
<b>0.25 (LQ)</b>	<b>7</b>	<b>7</b>	<b>7</b>	<b>7</b>	<b>7</b>	<b>7</b>	<b>7</b>	<b>7</b>	<b>7</b>	<b>7</b>
<b>0.5 (median)</b>	<b>9</b>	<b>9</b>	<b>9</b>	<b>9</b>	<b>9</b>	<b>9</b>	<b>9</b>	<b>9</b>	<b>9</b>	<b>9</b>
<b>0.75 (UQ)</b>	<b>10</b>	<b>10</b>	<b>10</b>	<b>10</b>	<b>10</b>	<b>10</b>	<b>10</b>	<b>10</b>	<b>10</b>	<b>10</b>
<b>0.9</b>	<b>10</b>	<b>10</b>	<b>10</b>	<b>10</b>	<b>10</b>	<b>10</b>	<b>10</b>	<b>10</b>	<b>10</b>	<b>10</b>
<b>0.95</b>	<b>10</b>	<b>10</b>	<b>10</b>	<b>10</b>	<b>10</b>	<b>10</b>	<b>10</b>	<b>10</b>	<b>10</b>	<b>10</b>
<b>1</b>	<b>10</b>	<b>10</b>	<b>10</b>	<b>10</b>	<b>10</b>	<b>10</b>	<b>10</b>	<b>10</b>	<b>10</b>	<b>10</b>

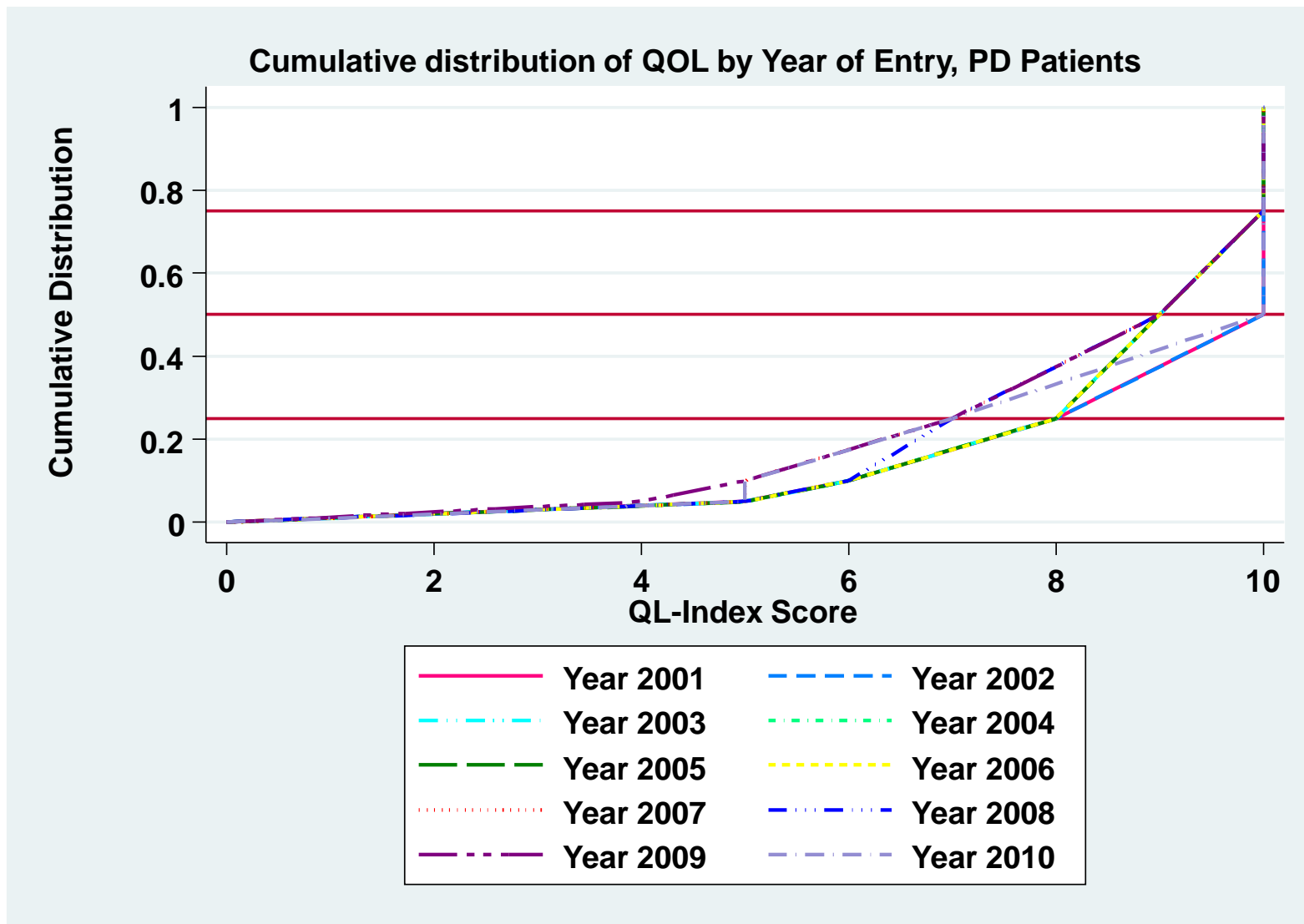
**Figure 4.5: Cumulative distribution of QoL-Index score in relation to year of entry, HD patients 2001-2010**



**Table 4.6: Cumulative distribution of QoL-Index score in relation to year of entry, PD patients 2001-2010**

<b>Year of Entry</b>	<b>2001</b>	<b>2002</b>	<b>2003</b>	<b>2004</b>	<b>2005</b>	<b>2006</b>	<b>2007</b>	<b>2008</b>	<b>2009</b>	<b>2010</b>
<b>Number of patients</b>	<b>269</b>	<b>320</b>	<b>369</b>	<b>307</b>	<b>319</b>	<b>425</b>	<b>526</b>	<b>576</b>	<b>577</b>	<b>472</b>
<b>Centile</b>										
<b>0</b>	<b>0</b>	<b>0</b>	<b>0</b>	<b>0</b>	<b>0</b>	<b>0</b>	<b>0</b>	<b>0</b>	<b>0</b>	<b>0</b>
<b>0.05</b>	<b>5</b>	<b>5</b>	<b>5</b>	<b>5</b>	<b>5</b>	<b>5</b>	<b>5</b>	<b>5</b>	<b>4</b>	<b>5</b>
<b>0.1</b>	<b>6</b>	<b>6</b>	<b>6</b>	<b>6</b>	<b>6</b>	<b>6</b>	<b>5</b>	<b>6</b>	<b>5</b>	<b>5</b>
<b>0.25 (LQ)</b>	<b>8</b>	<b>8</b>	<b>8</b>	<b>8</b>	<b>8</b>	<b>8</b>	<b>7</b>	<b>7</b>	<b>7</b>	<b>7</b>
<b>0.5 (median)</b>	<b>10</b>	<b>10</b>	<b>9</b>	<b>9</b>	<b>9</b>	<b>9</b>	<b>9</b>	<b>9</b>	<b>9</b>	<b>10</b>
<b>0.75 (UQ)</b>	<b>10</b>	<b>10</b>	<b>10</b>	<b>10</b>	<b>10</b>	<b>10</b>	<b>10</b>	<b>10</b>	<b>10</b>	<b>10</b>
<b>0.9</b>	<b>10</b>	<b>10</b>	<b>10</b>	<b>10</b>	<b>10</b>	<b>10</b>	<b>10</b>	<b>10</b>	<b>10</b>	<b>10</b>
<b>0.95</b>	<b>10</b>	<b>10</b>	<b>10</b>	<b>10</b>	<b>10</b>	<b>10</b>	<b>10</b>	<b>10</b>	<b>10</b>	<b>10</b>
<b>1</b>	<b>10</b>	<b>10</b>	<b>10</b>	<b>10</b>	<b>10</b>	<b>10</b>	<b>10</b>	<b>10</b>	<b>10</b>	<b>10</b>

**Figure 4.6: Cumulative distribution of QoL-Index score in relation to year of entry, PD patients 2001-2010**



**Table 4.7: Work related rehabilitation in relation to modality, dialysis patients, 2001-2010**

<b>Modality</b>	<b>PD</b>		<b>HD</b>	
	<b>n</b>	<b>%</b>	<b>n</b>	<b>%</b>
<b>Number of patients</b>	<b>1347</b>		<b>8864</b>	
<b>Able to return for Full or Part time for pay*</b>	<b>961</b>	<b>71</b>	<b>6093</b>	<b>69</b>
<b>Unable to work for pay</b>	<b>386</b>	<b>29</b>	<b>2771</b>	<b>31</b>

**Table 4.8 Work related rehabilitation in relation to year of entry,  
HD patients 2001-2010**

Year		2001	2002	2003	2004	2005	2006	2007	2008	2009	2010
Number of patients		628	714	733	852	856	1005	1016	1188	1083	789
Able to return for Full or Part time for pay*	n	457	535	540	609	608	715	711	783	689	446
	%	73	75	74	71	71	71	70	66	64	57
Unable to work for pay	n	171	179	193	243	248	290	305	405	394	343
	%	27	25	26	29	29	29	30	34	36	43

**Table 4.9 Work related rehabilitation in relation to year of entry,  
PD patients 2001-2010**

<b>Year</b>		<b>2001</b>	<b>2002</b>	<b>2003</b>	<b>2004</b>	<b>2005</b>	<b>2006</b>	<b>2007</b>	<b>2008</b>	<b>2009</b>	<b>2010</b>
<b>Number of patients</b>		<b>85</b>	<b>120</b>	<b>141</b>	<b>103</b>	<b>113</b>	<b>147</b>	<b>168</b>	<b>184</b>	<b>146</b>	<b>140</b>
<b>Able to return for Full or Part time for pay*</b>	<b>n</b>	<b>69</b>	<b>90</b>	<b>109</b>	<b>73</b>	<b>84</b>	<b>105</b>	<b>115</b>	<b>126</b>	<b>96</b>	<b>94</b>
	<b>%</b>	<b>81</b>	<b>75</b>	<b>77</b>	<b>71</b>	<b>74</b>	<b>71</b>	<b>68</b>	<b>68</b>	<b>66</b>	<b>67</b>
<b>Unable to work for pay</b>	<b>n</b>	<b>16</b>	<b>30</b>	<b>32</b>	<b>30</b>	<b>29</b>	<b>42</b>	<b>53</b>	<b>58</b>	<b>50</b>	<b>46</b>
	<b>%</b>	<b>19</b>	<b>25</b>	<b>23</b>	<b>29</b>	<b>26</b>	<b>29</b>	<b>32</b>	<b>32</b>	<b>34</b>	<b>33</b>