

CHAPTER 7

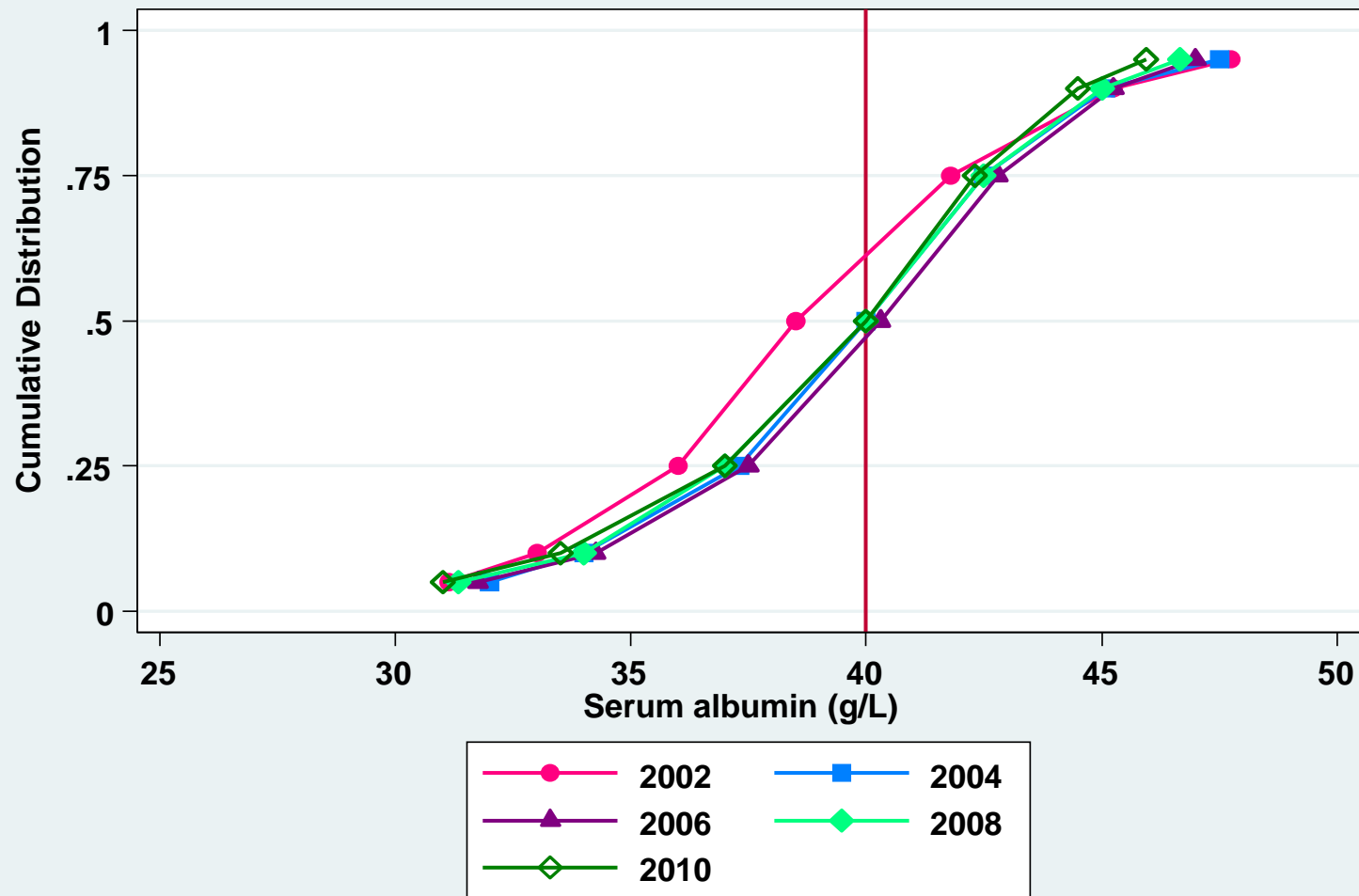
Nutritional Status on Dialysis

Winnie Chee Siew Swee
Abdul Halim B Abd Gafor
Ahmad Fauzi B Abd Rahman
Koh Keng Hee
Tilakavati Karupaiah

**Table 7.1.1: Distribution of serum albumin,
HD patients, 2001-2010**

Year	Number of patients	Mean	SD	Median	LQ	UQ	% patients <30g/L	% patients 30-<35g/L	% patients 35-<40g/L	% patients ≥40g/L
2001	4666	39	5.6	38.5	36	41.8	3	15	44	38
2002	5568	39.2	5.6	39	36.5	42	3	12	42	43
2003	6524	39.9	5.4	40	37.3	42.5	3	9	35	52
2004	7581	39.9	5.3	40	37	42.8	3	10	34	53
2005	8706	40	5.2	40.3	37.5	42.8	3	9	33	56
2006	10928	39.8	5.4	40.3	37.3	42.8	3	10	33	54
2007	12315	39.7	5.3	40	37	42.5	3	10	35	52
2008	14548	39.4	5.1	40	37	42.3	3	10	36	50
2009	16941	39.4	5.1	40	37	42.3	3	11	35	51
2010	18502	38.9	4.9	39.3	36.3	41.8	4	13	40	44

Figure 7.1.1: Cumulative distribution of Albumin, HD patients 2001-2010



**Table 7.1.2: Distribution of serum albumin,
PD patients, 2001-2010**

Year	Number of patients	Mean	SD	Median	LQ	UQ	% patients <30g/L	% patients 30-<35g/L	% patients 35-<40g/L	% patients ≥40g/L
2001	750	33.3	6.2	33.6	29.3	37	27	33	28	12
2002	862	33.9	5.9	34.3	30.8	37.5	21	35	33	12
2003	1180	33.3	5.8	33.8	29.7	37.3	26	33	30	11
2004	1284	33	6	33.8	29.5	37.3	27	32	30	11
2005	1346	33.2	6.4	33.3	29.5	37	27	33	30	10
2006	1498	33.5	6.1	33.8	30	37	25	33	30	12
2007	1753	33.6	6.2	34	30	37.8	25	31	30	14
2008	2021	33.1	6.4	33.3	29.3	37.3	28	32	27	13
2009	2138	32.7	6.4	33	29	36.8	30	34	25	11
2010	2305	32.1	6.2	32.3	28.5	36	33	35	24	8

Figure 7.1.2: Cumulative distribution of serum albumin, PD patients 2001-2010

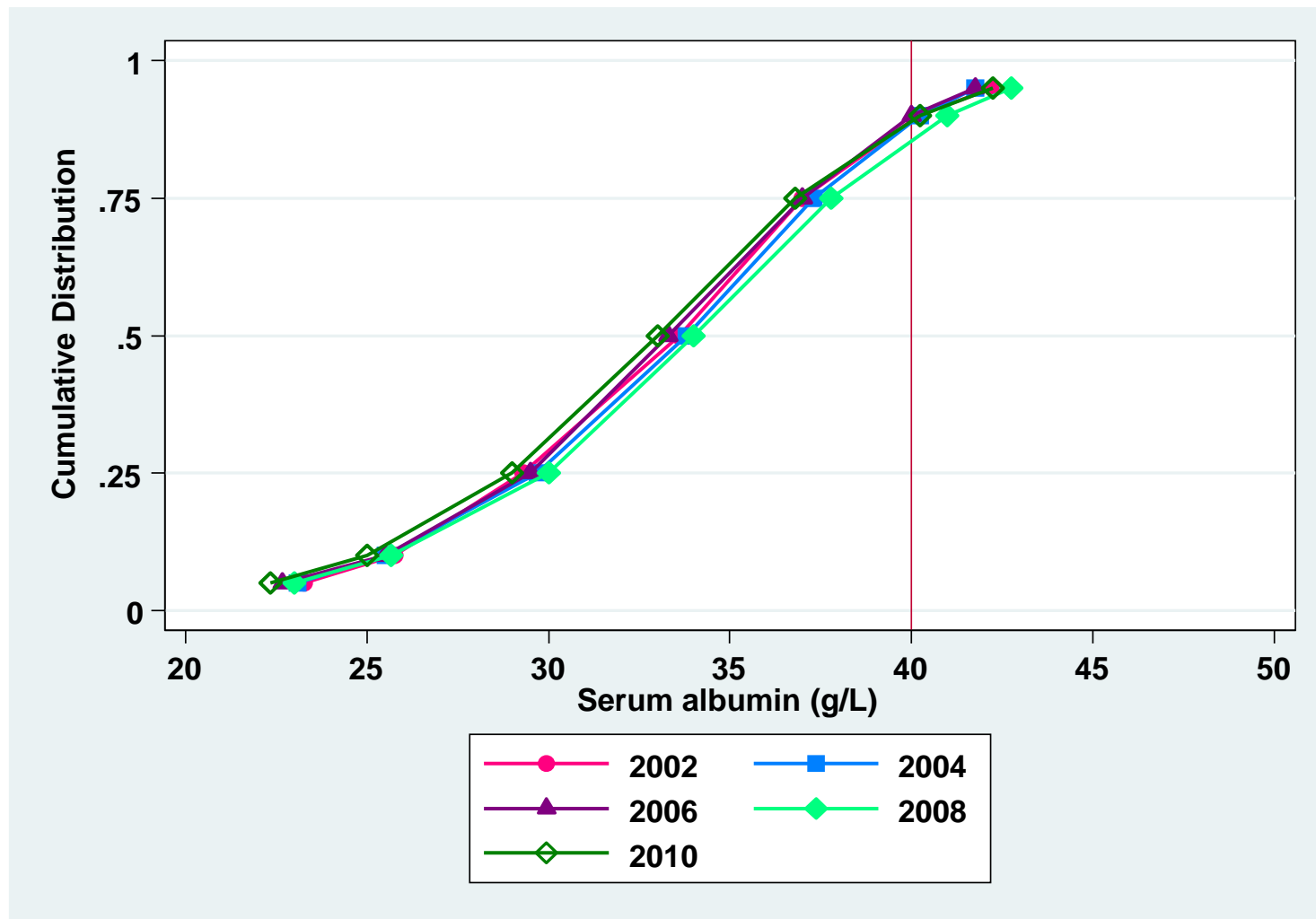


Table 7.1.3: Variation in Proportion of patients with serum albumin \geq 40g/L among HD centres 2001-2010

Year	Number of centers	Min	5 th centile	LQ	Median	UQ	95 th centile	Max
2001	116	0	3	15	40	58	85	100
2002	141	0	8	26	43	62	85	100
2003	175	0	18	39	55	70	92	100
2004	203	2	12	35	57	73	88	100
2005	229	4	11	42	56	69	86	100
2006	281	0	12	37	53	70	87	100
2007	313	0	13	37	54	68	86	100
2008	357	0	8	35	50	67	82	100
2009	401	0	7	36	53	65	82	100
2010	424	0	4	26.5	44	60.5	81	100

Figure 7.1.3: Variation in Proportion of patients with serum albumin $\geq 40\text{g/L}$, HD centres 2010

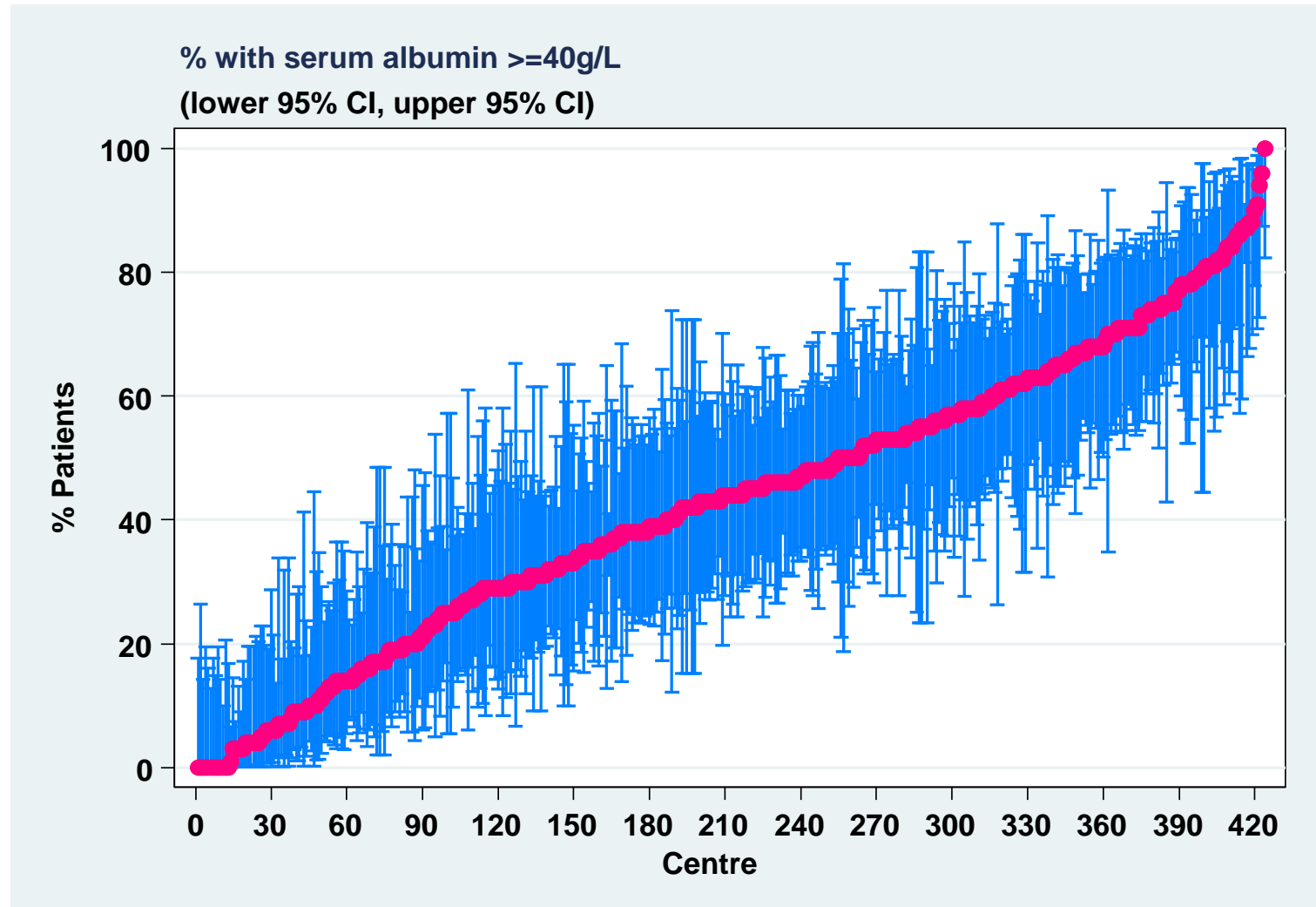
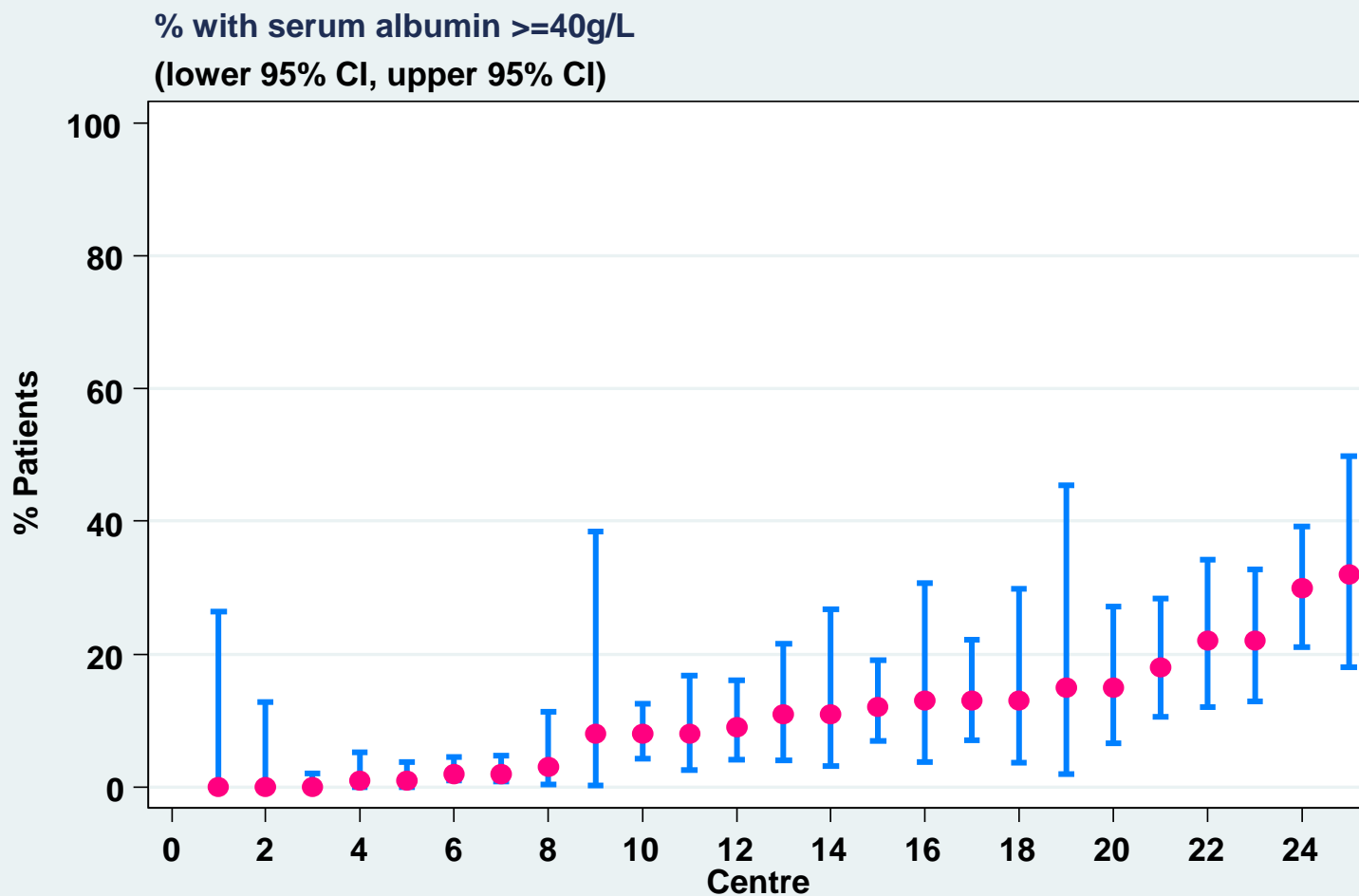


Table 7.1.4: Variation in Proportion of patients with serum albumin $\geq 40\text{g/L}$ among PD centres 2001-2010

Year	Number of centers	Min	5th centile	LQ	Median	UQ	95th centile	Max
2001	12	1	1	4.5	16	27.5	36	36
2002	15	5	5	6	10	24	36	36
2003	18	1	1	8	14	19	58	58
2004	18	2	2	8	14	21	35	35
2005	19	1	1	7	14	23	29	29
2006	22	1	1	6	12.5	22	42	70
2007	22	0	1	11	14	21	36	61
2008	23	0	1	4	15	25	37	52
2009	23	0	0	6	14	23	36	37
2010	25	0	0	2	11	15	30	32

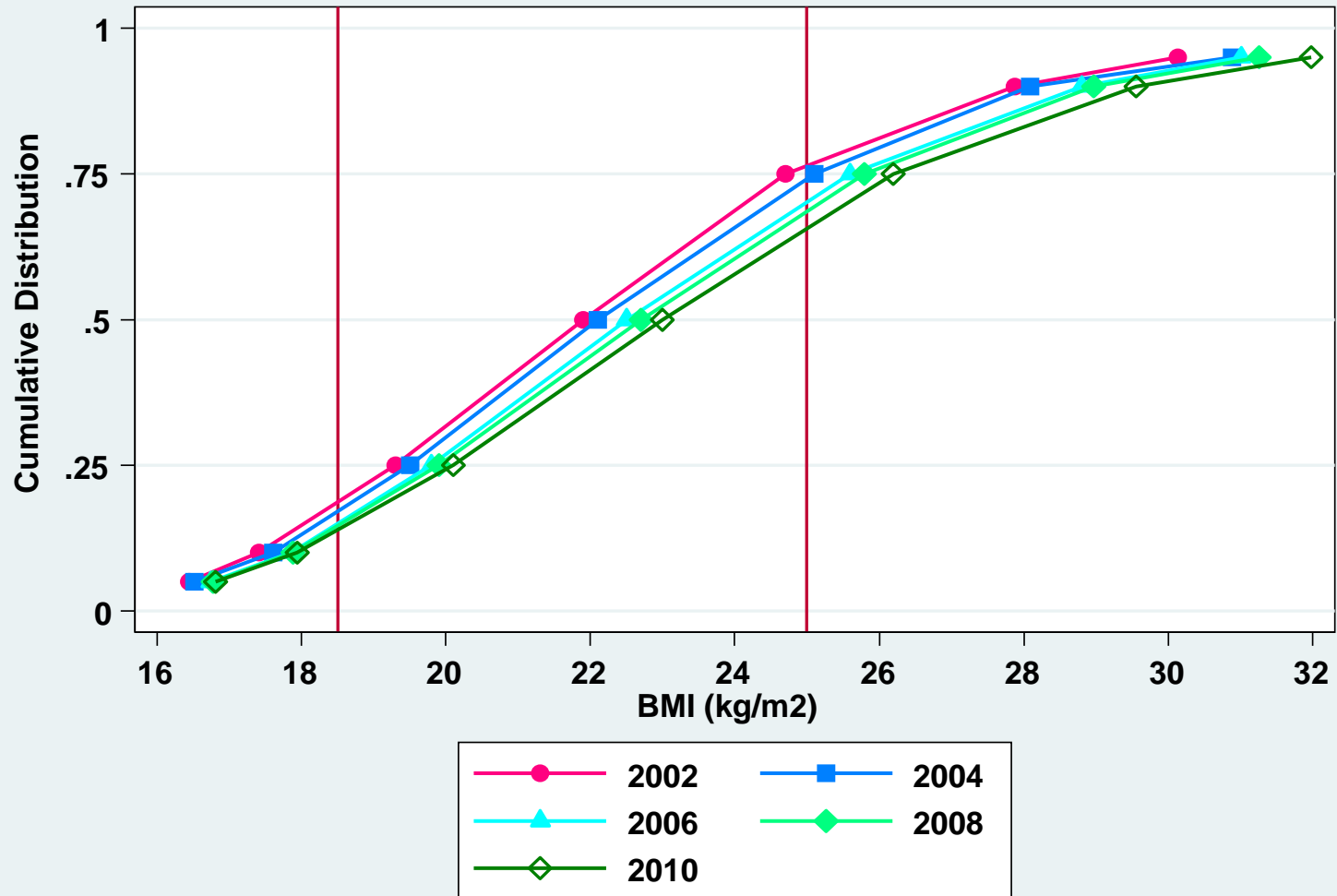
Figure 7.1.4: Variation in Proportion of patients with serum albumin $\geq 40\text{g/L}$, PD centres 2010



**Table 7.2.1: Distribution of BMI,
HD patients, 2001-2010**

Year	Number of patients	Mean	SD	Median	LQ	UQ	% patients <18.5	% patients 18.5-25	% patients >=25
2001	4551	23	11	21.9	19.3	24.7	18	59	23
2002	5104	23.2	10.6	22	19.5	24.9	16	59	24
2003	5990	23.1	9.7	22.1	19.5	25.1	16	58	26
2004	6775	23.3	9	22.4	19.8	25.4	14	58	28
2005	7838	23.4	9	22.5	19.8	25.6	14	57	29
2006	9791	23.3	7.9	22.6	19.9	25.7	14	56	29
2007	10509	23.4	7.9	22.7	19.9	25.8	14	56	30
2008	12217	23.5	7.5	22.8	20.1	26	13	55	31
2009	13714	23.8	8.2	23	20.1	26.2	13	54	33
2010	14582	23.9	7.9	23.2	20.3	26.5	12	53	35

Figure 7.2.1: Cumulative distribution of BMI, HD patients 2001-2010



**Table 7.2.2: Distribution of BMI,
PD patients 2001-2010**

Year	Number of patients	Mean	SD	Median	LQ	UQ	% patients <18.5	% patients 18.5-25	% patients >=25
2001	665	22	5.1	21.7	18.7	25.2	24	50	27
2002	752	22.2	5.1	22.1	18.7	25.5	24	47	30
2003	1072	22.8	6.9	22.5	19.2	25.8	20	50	30
2004	1176	23.1	7.3	22.5	19.4	26	19	50	31
2005	1223	23	7.2	22.5	19.3	25.8	20	50	30
2006	1421	23.3	8.3	22.6	19.6	26.1	16	50	33
2007	1620	23.4	5.9	22.9	19.9	26.3	15	51	34
2008	1876	23.8	7.7	23.2	20.2	26.6	14	50	36
2009	1949	24.1	8.5	23.4	20.4	26.8	13	50	38
2010	2057	24.5	10.1	23.5	20.5	27.2	12	49	39

Figure 7.2.2: Cumulative distribution of BMI, PD patients 2001-2010

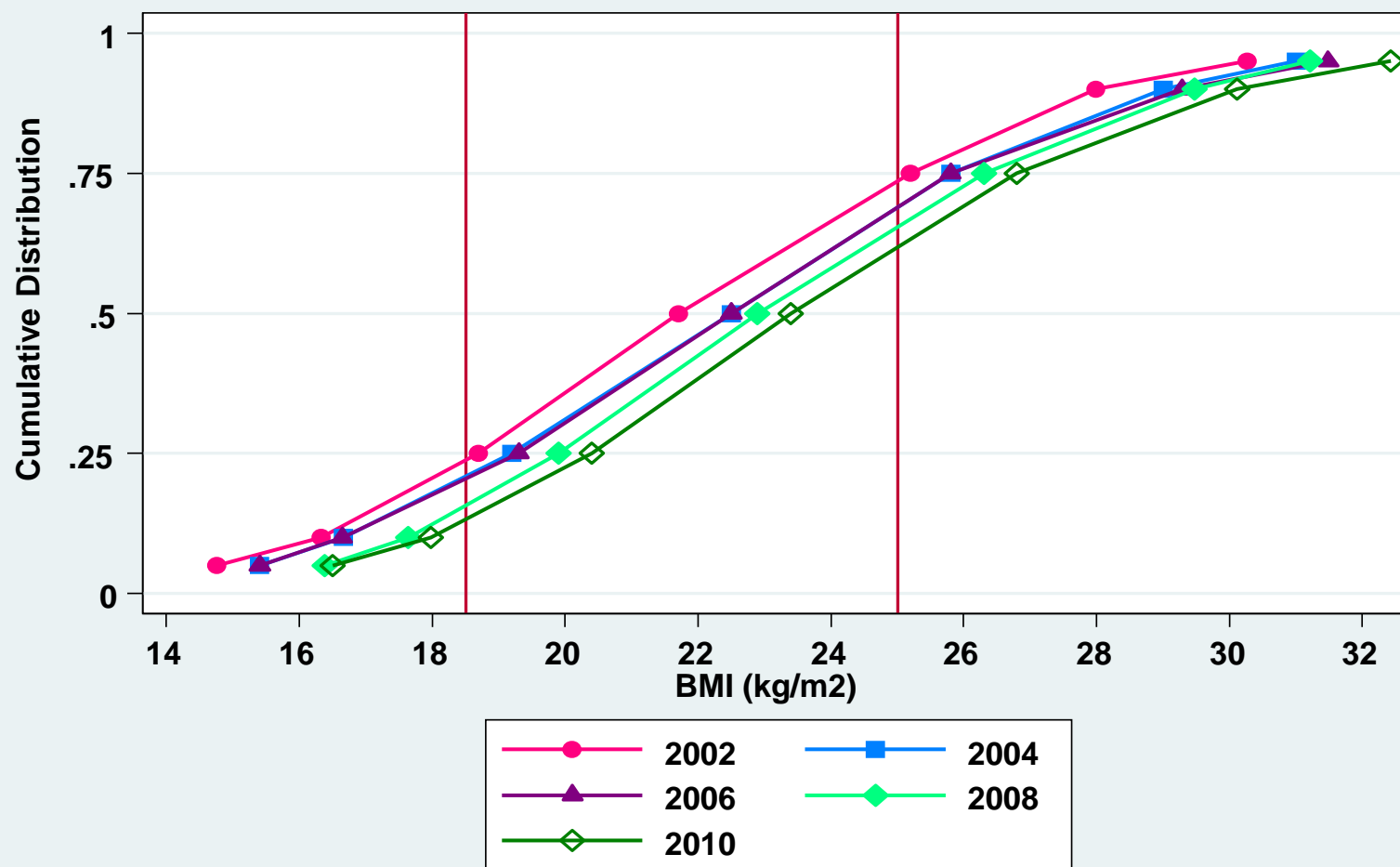


Table 7.2.3: Variation in Proportion of patients with BMI \geq 18.5 among HD centres 2001-2010

Year	Number of centers	Min	5th centile	LQ	Median	UQ	95th centile	Max
2001	113	60	65	77	83	89	93	100
2002	133	55	67	79	85	89	100	100
2003	156	60	69	79	84	91	100	100
2004	190	58	68	81	86	92	100	100
2005	206	65	70	80	88	93	100	100
2006	262	53	70	80	86	92	100	100
2007	281	54	71	81	87	92	100	100
2008	331	59	70	82	87	93	100	100
2009	356	62	73	82	88	93	100	100
2010	378	33	73	84	89	94	100	100

Figure 7.2.3: Variation in Proportion of patients with BMI ≥ 18.5 among HD centres 2010

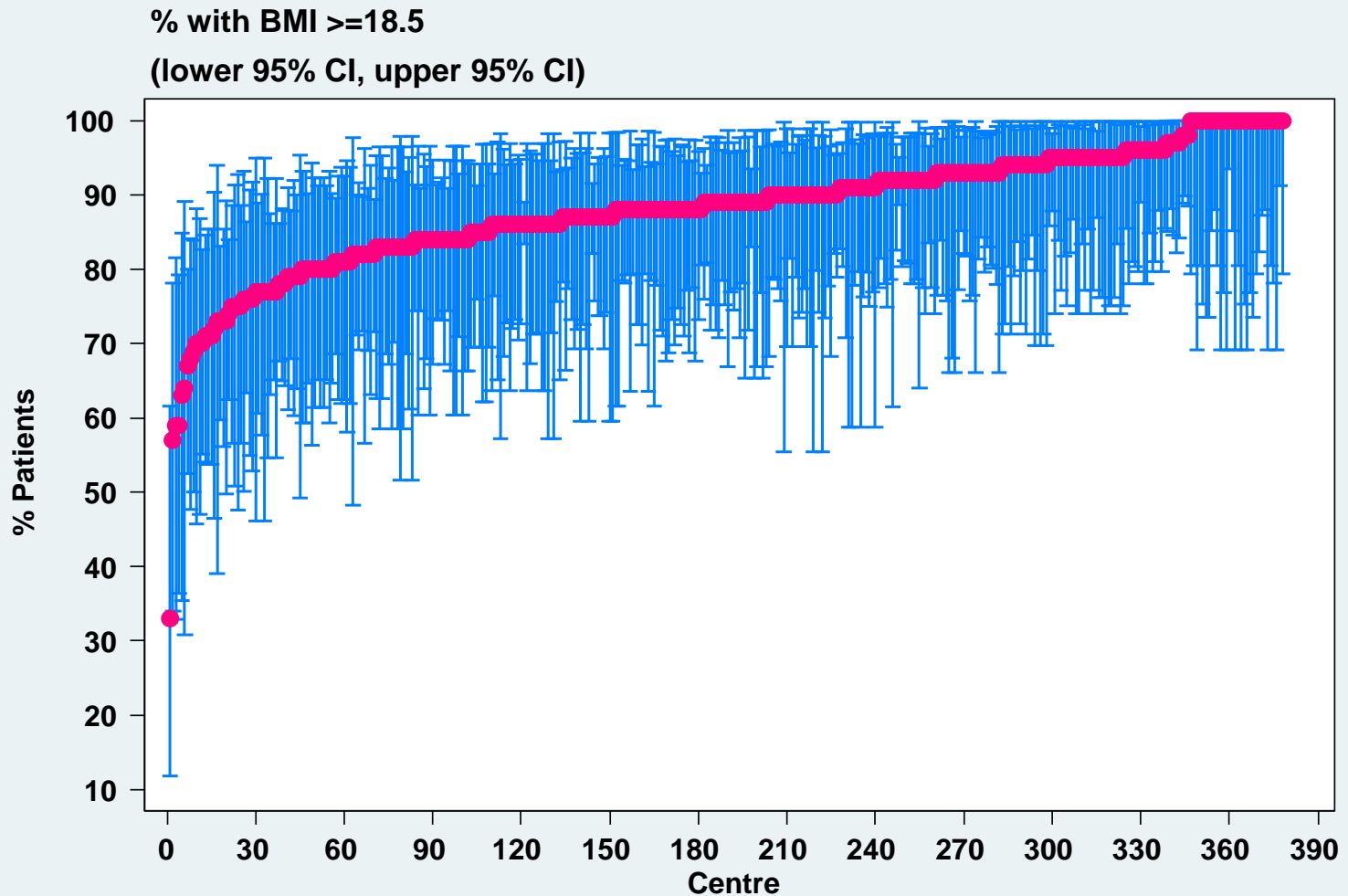


Table 7.2.4: Variation in Proportion of patients with BMI \geq 18.5 among PD centres 2001-2010

Year	Number of centers	Min	5 th centile	LQ	Median	UQ	95 th centile	Max
2001	11	15	15	72	77	88	92	92
2002	15	16	16	63	81	85	87	87
2003	18	18	18	74	81	88	96	96
2004	18	28	28	73	81.5	89	94	94
2005	18	17	17	70	83.5	87	91	91
2006	22	13	20	78	84	91	92	92
2007	22	15	17	76	87	92	97	100
2008	22	17	24	78	87.5	91	95	100
2009	21	29	40	80	90	93	95	97
2010	23	40	44	76	89	93	98	98

Figure 7.2.4: Variation in Proportion of patients with BMI ≥ 18.5 among PD centres 2010

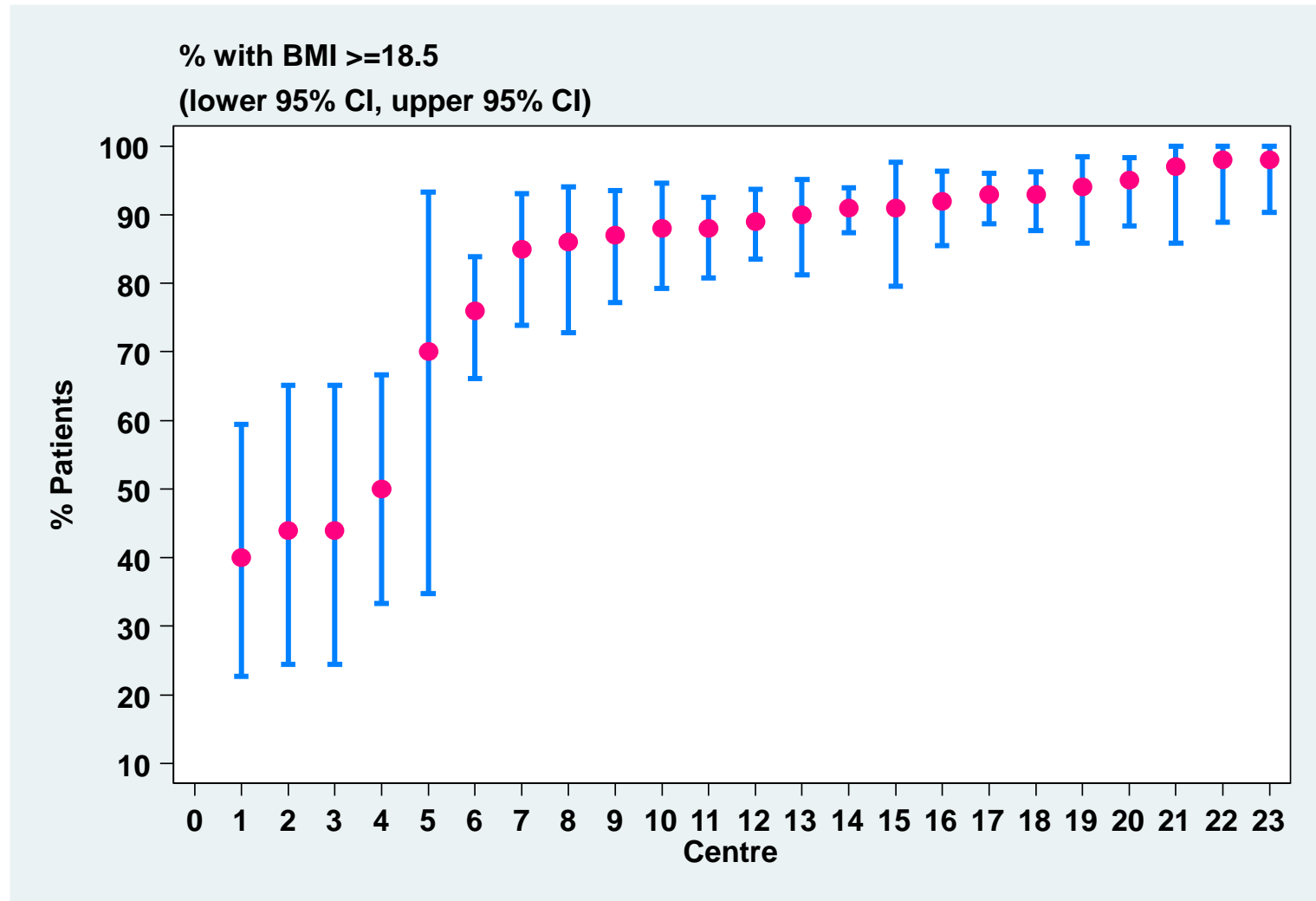


Table 7.2.5: Variation in Proportion of patients with BMI \geq 18.5 and serum albumin \geq 40 g/dL among HD centres 2001-2010

Year	Number of centers	Min	5th centile	LQ	Median	UQ	95th centile	Max
2001	106	0	0	11	31.5	50	68	100
2002	124	0	7	25.5	36.5	54	73	100
2003	150	0	17	35	47.5	61	78	100
2004	182	0	10	34	50	64	80	100
2005	195	3	11	38	50	62	80	90
2006	247	0	10	33	47	63	76	92
2007	272	0	9	32	47	60.5	74	92
2008	311	0	7	31	47	60	77	93
2009	349	0	5	33	46	61	76	92
2010	372	0	2	23	41	56.5	73	84

Figure 7.2.5: Variation in Proportion of patients with BMI ≥ 18.5 and serum albumin ≥ 40 g/dL among HD centres 2010

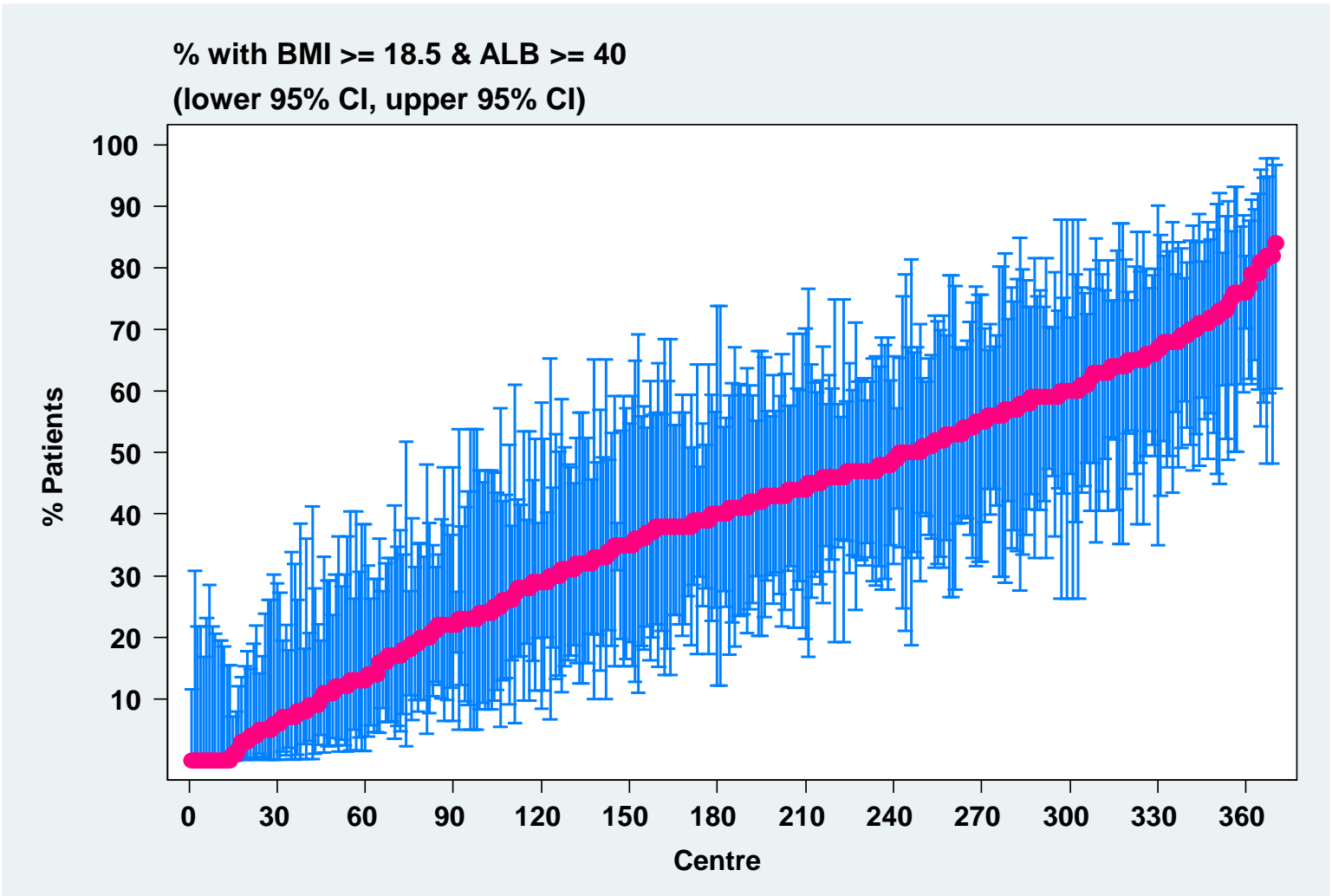


Table 7.2.6: Variation in Proportion of patients with BMI \geq 18.5 and serum albumin \geq 40 g/dL among PD centres 2001-2010

Year	Number of centers	Min	5th centile	LQ	Median	UQ	95th centile	Max
2001	11	1	1	5	8	20	24	24
2002	15	0	0	4	10	18	36	36
2003	18	0	0	4	10	16	46	46
2004	18	1	1	5	10.5	16	36	36
2005	18	0	0	4	8.5	17	26	26
2006	22	0	0	4	9.5	15	20	55
2007	22	0	1	4	11.5	19	36	54
2008	22	0	1	4	9	19	26	45
2009	21	0	0	5	10	19	29	35
2010	23	0	0	2	9	13	23	24

Figure 7.2.6: Variation in Proportion of patients with BMI ≥ 18.5 and serum albumin ≥ 40 g/dL among PD centres 2010

