

# **CHAPTER 8**

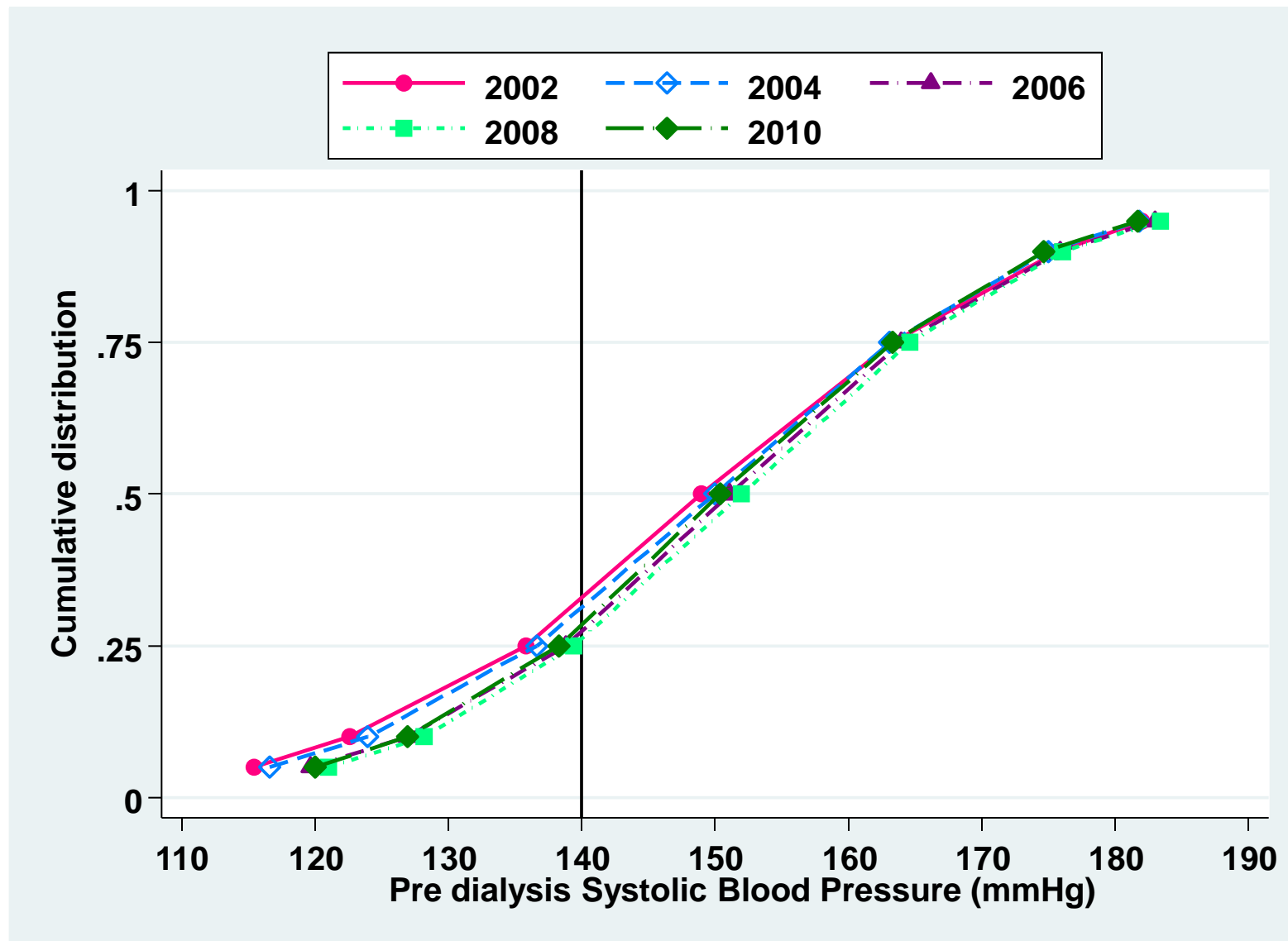
## **Blood Pressure Control and Dyslipidaemia in Patients on Dialysis**

S. Prasad Menon  
Hooi Lai Seong  
Lee Wan Tin  
Sunita Bavanandan

**Table 8.1.1: Distribution of Pre dialysis Systolic Blood Pressure,  
HD patients 2001-2010**

Year	Number of patients	Mean	SD	Median	LQ	UQ	% Patients <120 mmHg	% Patients 120-<140 mmHg	% Patients 140-<160 mmHg	% Patients 160-<180 mmHg	% Patients ≥180 mmHg
2001	5147	148.8	20.9	148.8	134.9	162.6	8	25	37	23	7
2002	5911	149.2	20.6	149	135.8	163.3	8	24	38	24	6
2003	6834	149.7	20.2	149.8	136.4	162.9	7	24	39	23	7
2004	7937	149.7	20	150	136.6	163.1	7	23	39	25	6
2005	9221	149.9	19.4	149.6	137	162.8	6	24	40	24	6
2006	11526	151.4	19.3	151.1	138.8	164	5	22	41	25	7
2007	12830	152.1	19.1	151.9	139.3	164.7	5	21	40	27	7
2008	15314	152.1	19	152	139.4	164.6	4	21	40	27	7
2009	17872	151	19	150.6	138.2	163.5	5	23	41	25	7
2010	19170	150.7	19	150.4	138.3	163.3	5	23	41	25	6

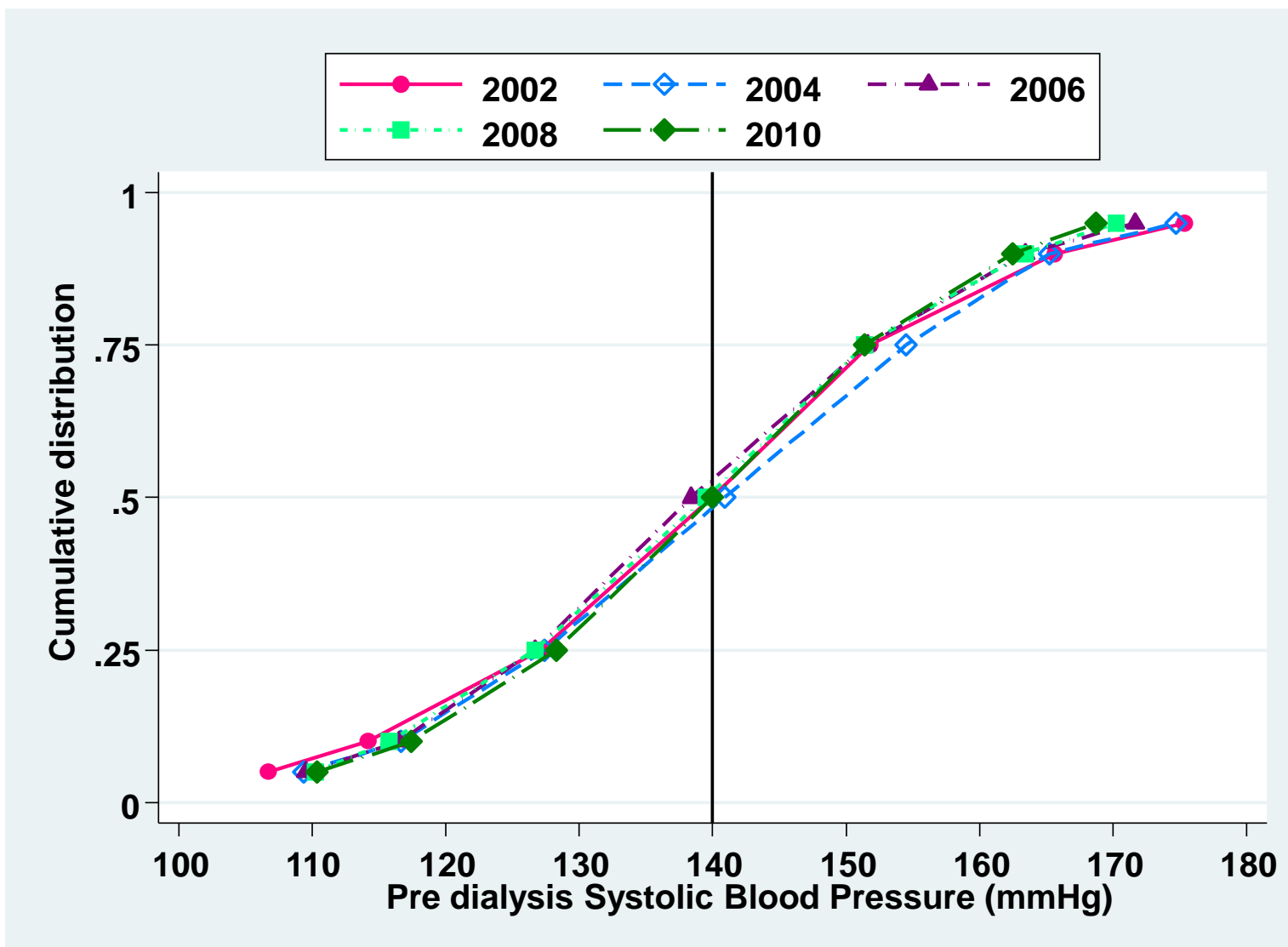
**Figure 8.1.1: Cumulative distribution of Pre dialysis Systolic Blood Pressure, HD patients 2001-2010**



**Table 8.1.2: Distribution of Pre dialysis Systolic Blood Pressure, PD patients 2001-2010**

Year	Number of patients	Mean	SD	Median	LQ	UQ	% Patients <120 mmHg	% Patients 120-<140 mmHg	% Patients 140-<160 mmHg	% Patients 160-<180 mmHg	% Patients ≥180 mmHg
2001	739	139	20.2	137.5	125.8	151.7	16	38	30	13	3
2002	843	139.8	20.5	140	127.1	151.8	14	36	34	12	4
2003	1154	140.5	20.1	140	126.7	154.1	15	35	32	15	3
2004	1259	141	19.8	140.9	127.4	154.5	13	34	36	14	3
2005	1351	140.4	20.2	139.3	127.3	153.2	13	38	32	14	3
2006	1523	139.3	19.3	138.4	126.7	151.6	14	40	32	11	2
2007	1753	139.9	19.2	139.4	127	152.8	15	37	33	13	2
2008	2049	139.4	18.7	139.5	126.7	151.4	15	36	35	12	2
2009	2177	140.7	18.7	140.5	128.1	153.4	13	35	35	14	2
2010	2327	140	17.8	140	128.3	151.4	12	37	38	11	2

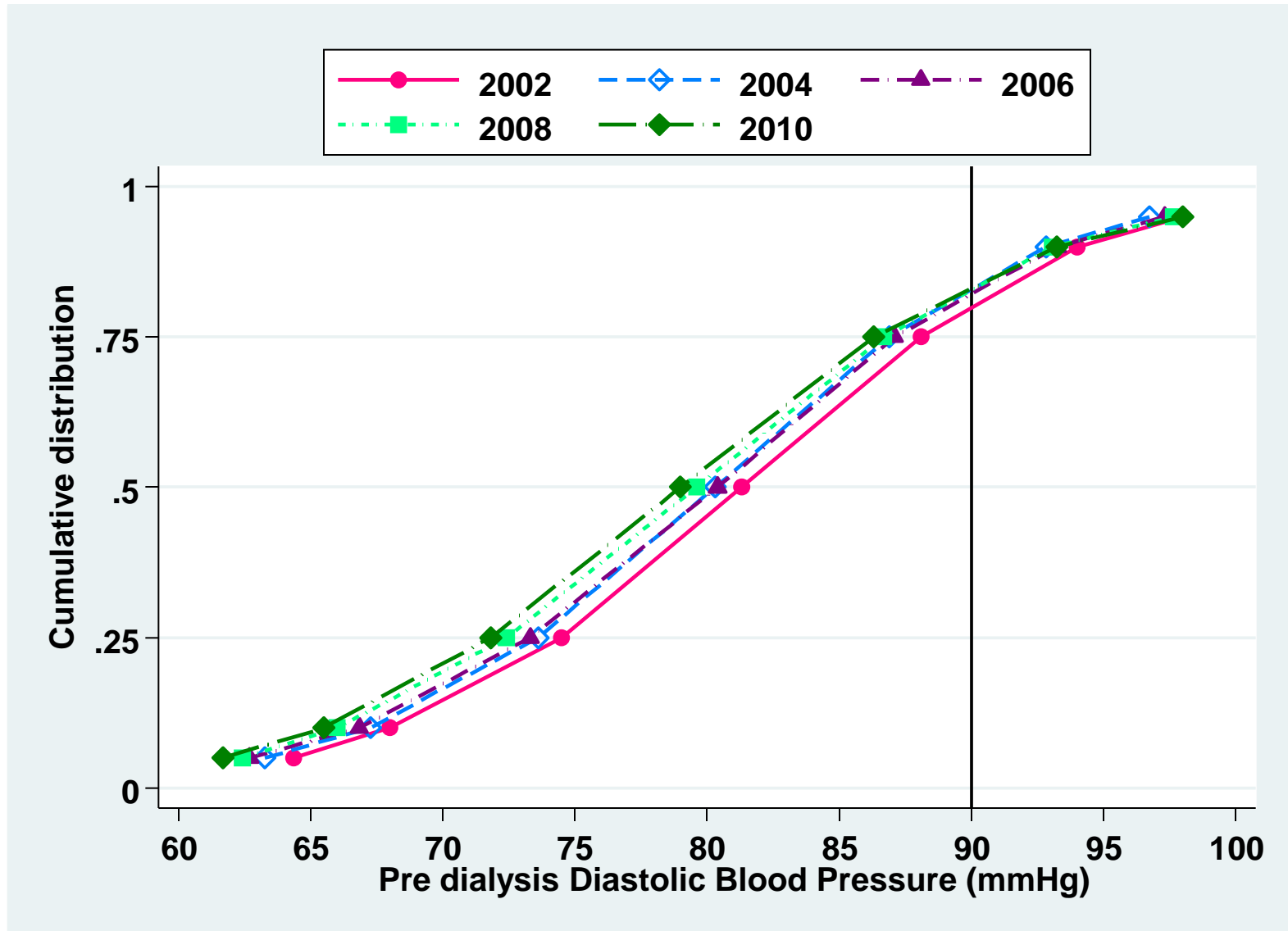
**Figure 8.1.2: Distribution of Pre dialysis Systolic Blood Pressure, PD patients 2001-2010**



**Table 8.1.3: Distribution of Pre dialysis Diastolic Blood Pressure, HD patients 2001-2010**

Year	Number of patients	Mean	SD	Median	LQ	UQ	% Patients <70 mmHg	% Patients 70-<80 mmHg	% Patients 80-<90 mmHg	% Patients 90-<100 mmHg	% Patients ≥100 mmHg
2001	5146	81.6	10.4	81.7	75	88.3	12	30	37	17	4
2002	5907	81.2	10.4	81.3	74.5	88.1	13	30	37	16	3
2003	6832	80.6	10.2	80.8	73.9	87.2	14	32	37	14	3
2004	7935	80.3	10.2	80.3	73.6	86.9	15	33	36	14	3
2005	9221	80.3	10.6	80.4	73.5	87	15	32	36	14	3
2006	11525	80.4	11.1	80.4	73.3	87.1	16	32	35	14	3
2007	12830	80.4	11.1	80.2	73.1	87	16	32	34	14	4
2008	15312	79.8	11.1	79.6	72.4	86.7	18	33	33	13	3
2009	17871	79.7	12	79.2	72	86.4	19	33	31	12	4
2010	19168	79.6	12.1	79	71.8	86.3	20	34	31	12	4

**Figure 8.1.3: Cumulative Distribution of Pre dialysis Diastolic Blood Pressure, HD patients 2001-2010**

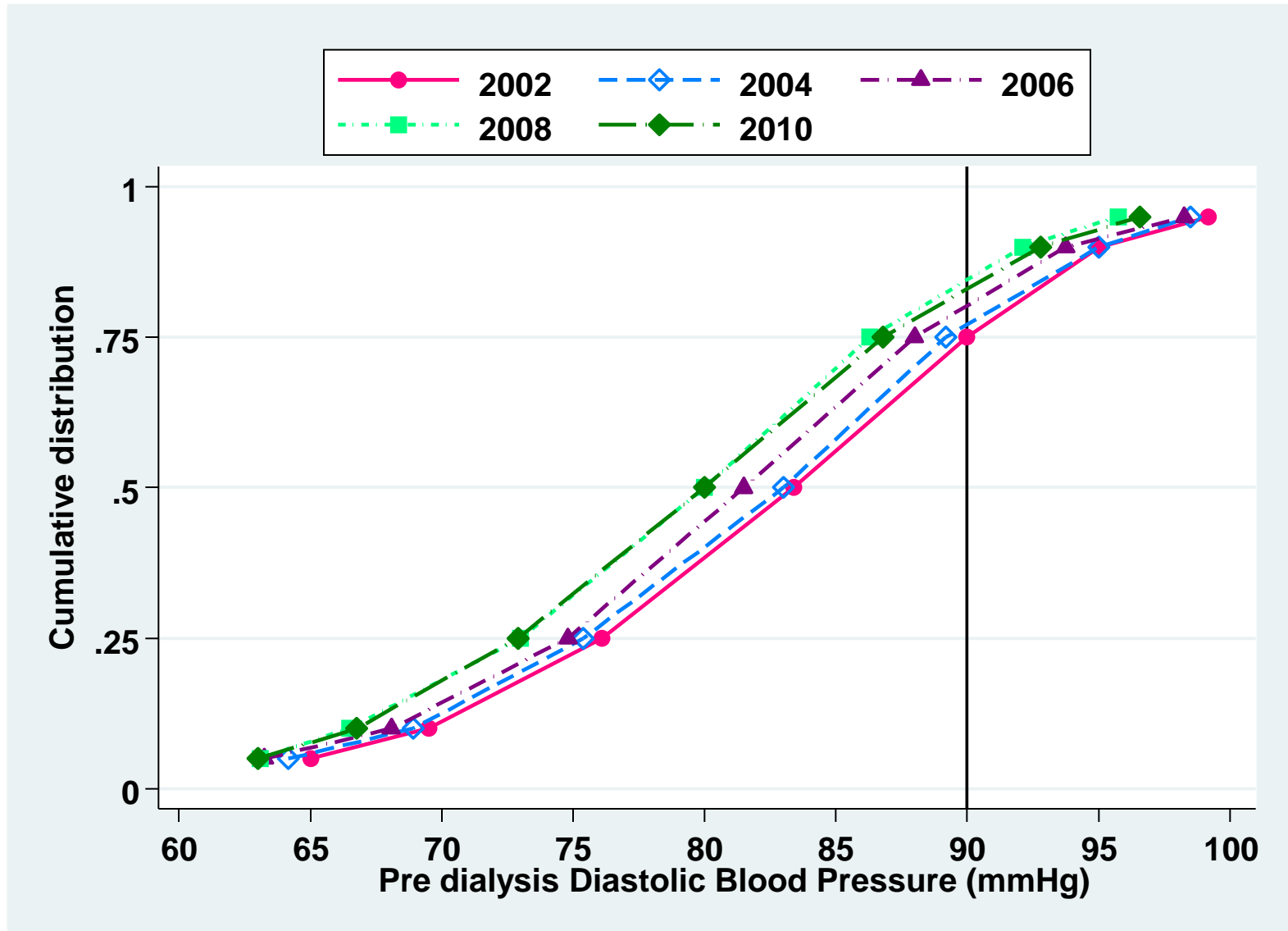


**Table 8.1.4: Distribution of Pre dialysis Diastolic Blood Pressure, PD patients 2001-2010**

Year	Number of patients	Mean	SD	Median	LQ	UQ	% Patients <70 mmHg	% Patients 70-<80 mmHg	% Patients 80-<90 mmHg	% Patients 90-<100 mmHg	% Patients ≥100 mmHg
2001	739	83.1	10.9	82.7	76.4	89.6	9	29	38	18	6
2002	843	82.8	10.8	83.4	76.1	90	11	24	41	21	5
2003	1156	82.2	10.9	82.3	75.6	89.4	12	26	38	19	4
2004	1258	82.2	10.5	83	75.4	89.2	11	28	38	18	4
2005	1351	81.6	10.9	82.2	75	88.3	12	29	40	15	5
2006	1522	81.3	10.6	81.5	74.8	88	13	28	40	15	3
2007	1752	80.6	10.7	80.7	74	86.9	14	32	38	12	3
2008	2049	79.7	10.1	80	73	86.3	16	32	36	13	2
2009	2177	80.2	10.3	80.2	73.5	86.9	15	33	35	14	3
2010	2327	79.9	10.4	80	72.9	86.8	17	33	34	13	3



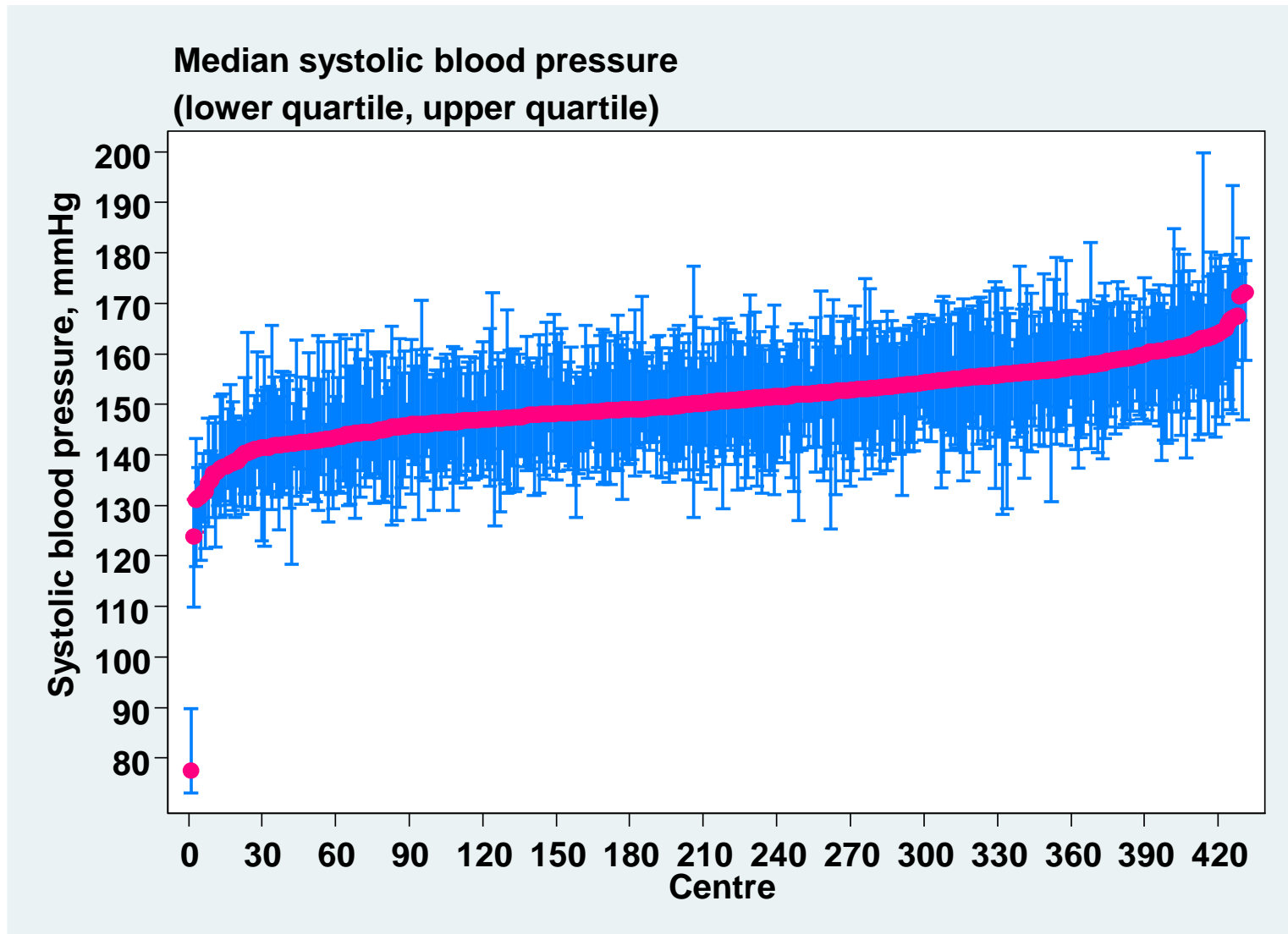
**Figure 8.1.4: Cumulative Distribution of Pre dialysis Diastolic Blood Pressure, PD patients 2001-2010**



**Table 8.1.5 (a): Median systolic blood pressure among HD patients, HD centres**

<b>Year</b>	<b>Number of centres</b>	<b>Min</b>	<b>5<sup>th</sup> Centile</b>	<b>LQ</b>	<b>Median</b>	<b>UQ</b>	<b>95<sup>th</sup> Centile</b>	<b>Max</b>
<b>2001</b>	<b>126</b>	<b>126.6</b>	<b>136.2</b>	<b>143.3</b>	<b>149.5</b>	<b>154.9</b>	<b>161.8</b>	<b>180.5</b>
<b>2002</b>	<b>146</b>	<b>126.7</b>	<b>137.1</b>	<b>145</b>	<b>149.3</b>	<b>154</b>	<b>162</b>	<b>169.7</b>
<b>2003</b>	<b>178</b>	<b>126.7</b>	<b>136.6</b>	<b>144.9</b>	<b>150.4</b>	<b>156</b>	<b>161.4</b>	<b>173.7</b>
<b>2004</b>	<b>213</b>	<b>120</b>	<b>138</b>	<b>145.3</b>	<b>149.8</b>	<b>155.4</b>	<b>162.4</b>	<b>168.3</b>
<b>2005</b>	<b>241</b>	<b>128.3</b>	<b>136.8</b>	<b>143.6</b>	<b>150.3</b>	<b>155</b>	<b>161</b>	<b>171.8</b>
<b>2006</b>	<b>290</b>	<b>127.9</b>	<b>138.4</b>	<b>146.4</b>	<b>151.5</b>	<b>156.5</b>	<b>163.4</b>	<b>180.1</b>
<b>2007</b>	<b>318</b>	<b>132.1</b>	<b>140.1</b>	<b>147.5</b>	<b>151.9</b>	<b>156.6</b>	<b>165</b>	<b>175.5</b>
<b>2008</b>	<b>368</b>	<b>130</b>	<b>140.4</b>	<b>147.5</b>	<b>152.4</b>	<b>157</b>	<b>164</b>	<b>176.5</b>
<b>2009</b>	<b>408</b>	<b>121.7</b>	<b>139.6</b>	<b>146.7</b>	<b>151.1</b>	<b>155.9</b>	<b>162.8</b>	<b>173.3</b>
<b>2010</b>	<b>430</b>	<b>123.7</b>	<b>140.8</b>	<b>146.6</b>	<b>150.6</b>	<b>155.7</b>	<b>162.1</b>	<b>172.1</b>

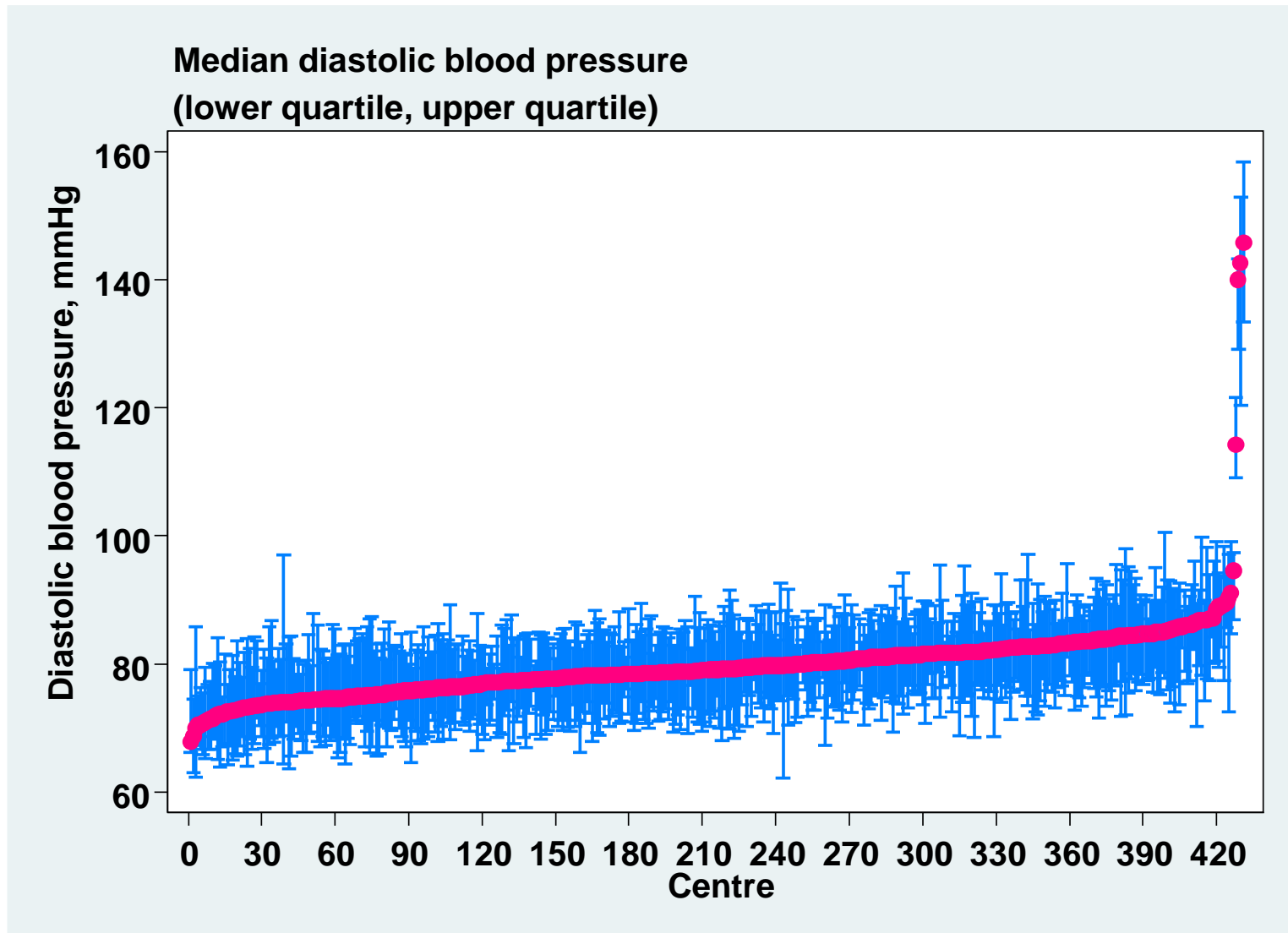
**Figure 8.1.5 (a): Variation in median systolic blood pressure among HD patients, HD centres 2010**



**Table 8.1.5 (b): Median Diastolic blood pressure among HD patients, HD centres**

<b>Year</b>	<b>Number of centres</b>	<b>Min</b>	<b>5<sup>th</sup> Centile</b>	<b>LQ</b>	<b>Median</b>	<b>UQ</b>	<b>95<sup>th</sup> Centile</b>	<b>Max</b>
<b>2001</b>	<b>126</b>	<b>73.9</b>	<b>75.7</b>	<b>79.8</b>	<b>81.9</b>	<b>83.7</b>	<b>87.4</b>	<b>91.3</b>
<b>2002</b>	<b>147</b>	<b>72.3</b>	<b>75.9</b>	<b>79.4</b>	<b>81.3</b>	<b>83.7</b>	<b>87.8</b>	<b>92</b>
<b>2003</b>	<b>178</b>	<b>70.1</b>	<b>75</b>	<b>78.5</b>	<b>80.5</b>	<b>83.5</b>	<b>86.7</b>	<b>93.3</b>
<b>2004</b>	<b>213</b>	<b>70.2</b>	<b>74</b>	<b>78.2</b>	<b>80.8</b>	<b>82.5</b>	<b>86.7</b>	<b>89.1</b>
<b>2005</b>	<b>241</b>	<b>67.4</b>	<b>73.6</b>	<b>78</b>	<b>80.4</b>	<b>82.8</b>	<b>86.7</b>	<b>90.3</b>
<b>2006</b>	<b>290</b>	<b>67.3</b>	<b>74.6</b>	<b>77.9</b>	<b>80.7</b>	<b>83.2</b>	<b>87.3</b>	<b>104.9</b>
<b>2007</b>	<b>318</b>	<b>70.1</b>	<b>73.5</b>	<b>77.7</b>	<b>80.2</b>	<b>83</b>	<b>87.3</b>	<b>124.5</b>
<b>2008</b>	<b>368</b>	<b>66.8</b>	<b>73.7</b>	<b>77.2</b>	<b>79.7</b>	<b>82.3</b>	<b>86.5</b>	<b>92.3</b>
<b>2009</b>	<b>408</b>	<b>68.5</b>	<b>73.1</b>	<b>76.7</b>	<b>79.5</b>	<b>82</b>	<b>86.2</b>	<b>134.4</b>
<b>2010</b>	<b>431</b>	<b>67.8</b>	<b>73</b>	<b>76.4</b>	<b>79.2</b>	<b>81.8</b>	<b>86.1</b>	<b>145.7</b>

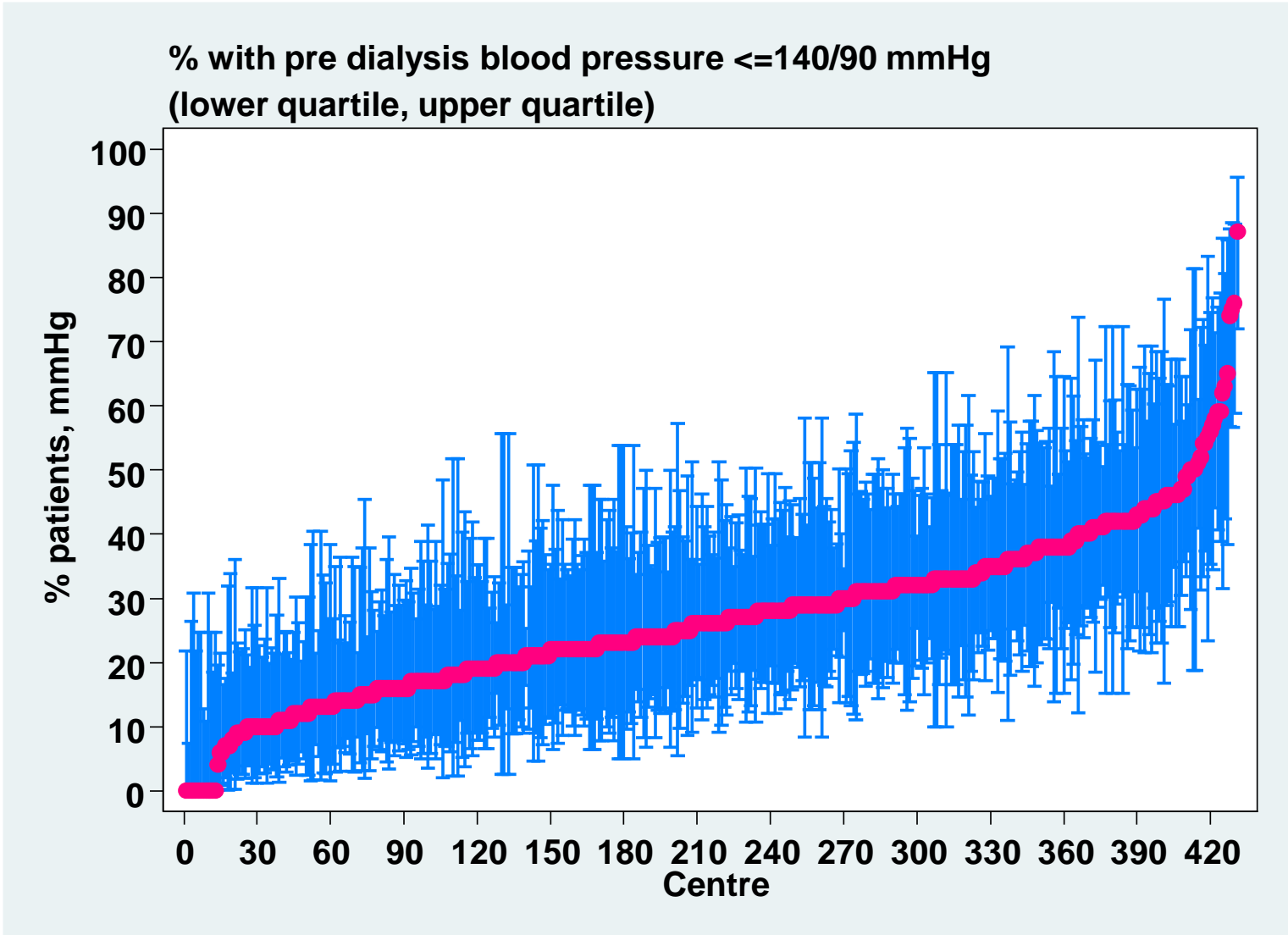
**Figure 8.1.5 (b): Variation in median diastolic blood pressure among HD patients, HD centres 2010**



**Table 8.1.5 (c): Proportion of HD patients with pre dialysis blood pressure < 140/90 mmHg, HD centres**

<b>Year</b>	<b>Number of centres</b>	<b>Min</b>	<b>5<sup>th</sup> Centile</b>	<b>LQ</b>	<b>Median</b>	<b>UQ</b>	<b>95<sup>th</sup> Centile</b>	<b>Max</b>
<b>2001</b>	<b>126</b>	<b>0</b>	<b>11</b>	<b>20</b>	<b>30.5</b>	<b>43</b>	<b>58</b>	<b>70</b>
<b>2002</b>	<b>147</b>	<b>0</b>	<b>11</b>	<b>21</b>	<b>30</b>	<b>40</b>	<b>59</b>	<b>71</b>
<b>2003</b>	<b>178</b>	<b>3</b>	<b>9</b>	<b>20</b>	<b>28</b>	<b>38</b>	<b>58</b>	<b>81</b>
<b>2004</b>	<b>213</b>	<b>0</b>	<b>9</b>	<b>20</b>	<b>29</b>	<b>38</b>	<b>56</b>	<b>90</b>
<b>2005</b>	<b>241</b>	<b>4</b>	<b>11</b>	<b>20</b>	<b>27</b>	<b>39</b>	<b>55</b>	<b>93</b>
<b>2006</b>	<b>290</b>	<b>0</b>	<b>9</b>	<b>17</b>	<b>25</b>	<b>35</b>	<b>53</b>	<b>74</b>
<b>2007</b>	<b>318</b>	<b>0</b>	<b>8</b>	<b>16</b>	<b>25</b>	<b>33</b>	<b>47</b>	<b>73</b>
<b>2008</b>	<b>368</b>	<b>0</b>	<b>8</b>	<b>17</b>	<b>24</b>	<b>33</b>	<b>48</b>	<b>75</b>
<b>2009</b>	<b>408</b>	<b>0</b>	<b>10</b>	<b>18</b>	<b>26</b>	<b>35</b>	<b>50</b>	<b>80</b>
<b>2010</b>	<b>431</b>	<b>0</b>	<b>9</b>	<b>18</b>	<b>26</b>	<b>34</b>	<b>49</b>	<b>87</b>

**Figure 8.1.5 (c): Variation in proportion of HD patients with pre dialysis blood pressure < 140/90 mmHg, HD centers 2010**

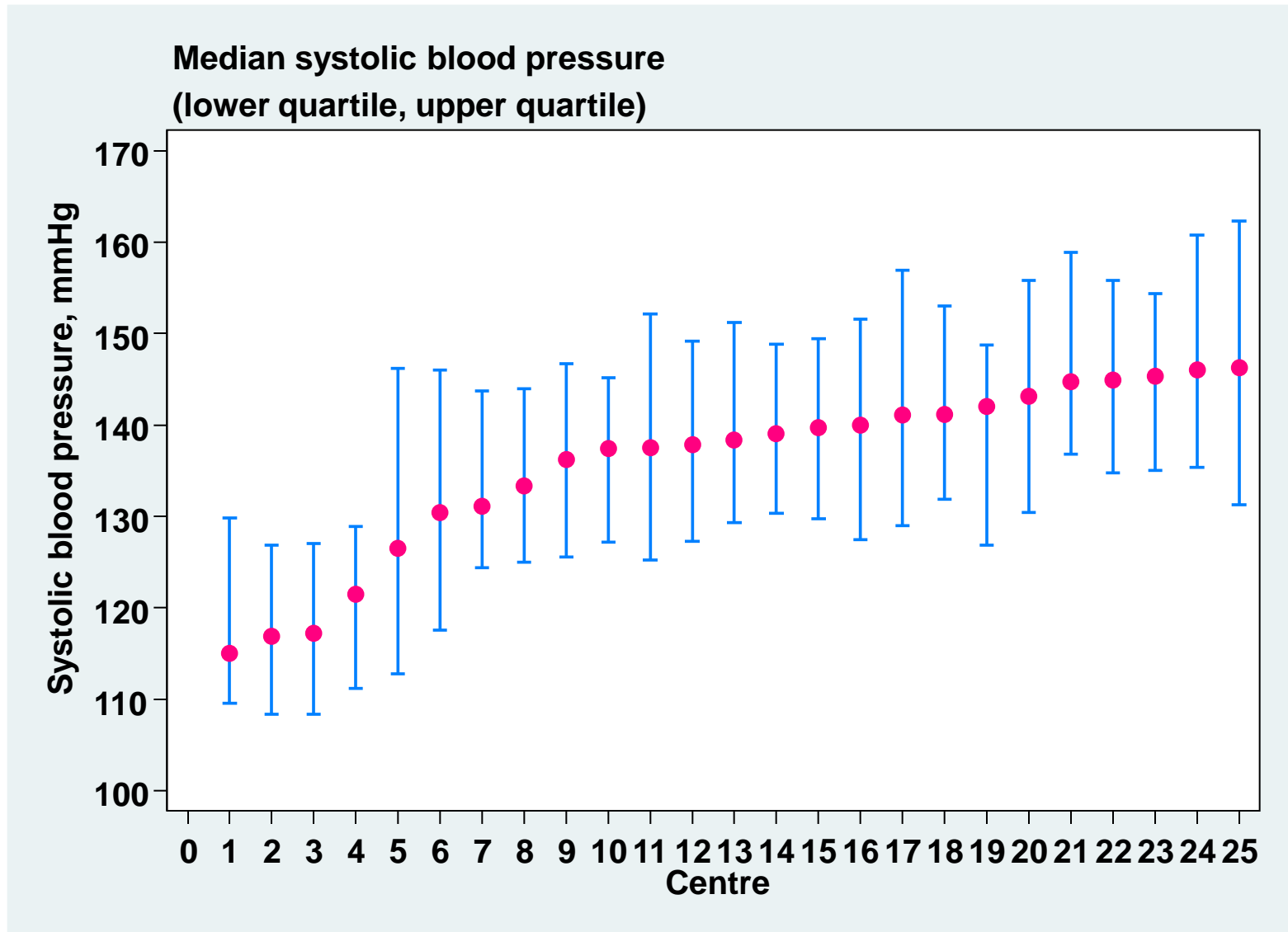


**Table 8.1.6 (a): Median systolic blood pressure among PD patients**

<b>Year</b>	<b>Number of centres</b>	<b>Min</b>	<b>5<sup>th</sup> Centile</b>	<b>LQ</b>	<b>Median</b>	<b>UQ</b>	<b>95<sup>th</sup> Centile</b>	<b>Max</b>
<b>2001</b>	<b>11</b>	<b>119.6</b>	<b>119.6</b>	<b>130.7</b>	<b>137.5</b>	<b>138.8</b>	<b>149</b>	<b>149</b>
<b>2002</b>	<b>15</b>	<b>123.6</b>	<b>123.6</b>	<b>134.5</b>	<b>140</b>	<b>144.5</b>	<b>148.2</b>	<b>148.2</b>
<b>2003</b>	<b>18</b>	<b>123.8</b>	<b>123.8</b>	<b>132.4</b>	<b>142.4</b>	<b>144.3</b>	<b>151.8</b>	<b>151.8</b>
<b>2004</b>	<b>18</b>	<b>122.9</b>	<b>122.9</b>	<b>134.5</b>	<b>139.8</b>	<b>143.8</b>	<b>149.7</b>	<b>149.7</b>
<b>2005</b>	<b>19</b>	<b>122.6</b>	<b>122.6</b>	<b>134.8</b>	<b>136.6</b>	<b>142</b>	<b>158</b>	<b>158</b>
<b>2006</b>	<b>22</b>	<b>113</b>	<b>118.3</b>	<b>130.2</b>	<b>136.3</b>	<b>140.4</b>	<b>146</b>	<b>154.9</b>
<b>2007</b>	<b>22</b>	<b>114.6</b>	<b>115.8</b>	<b>135.2</b>	<b>138.2</b>	<b>141.8</b>	<b>147.4</b>	<b>153.5</b>
<b>2008</b>	<b>22</b>	<b>111.5</b>	<b>118.3</b>	<b>136</b>	<b>138.4</b>	<b>141.9</b>	<b>147.7</b>	<b>147.9</b>
<b>2009</b>	<b>23</b>	<b>113.7</b>	<b>115.6</b>	<b>133.6</b>	<b>138.5</b>	<b>145</b>	<b>150.9</b>	<b>161.5</b>
<b>2010</b>	<b>25</b>	<b>115</b>	<b>116.9</b>	<b>131.1</b>	<b>138.4</b>	<b>142</b>	<b>146</b>	<b>146.3</b>



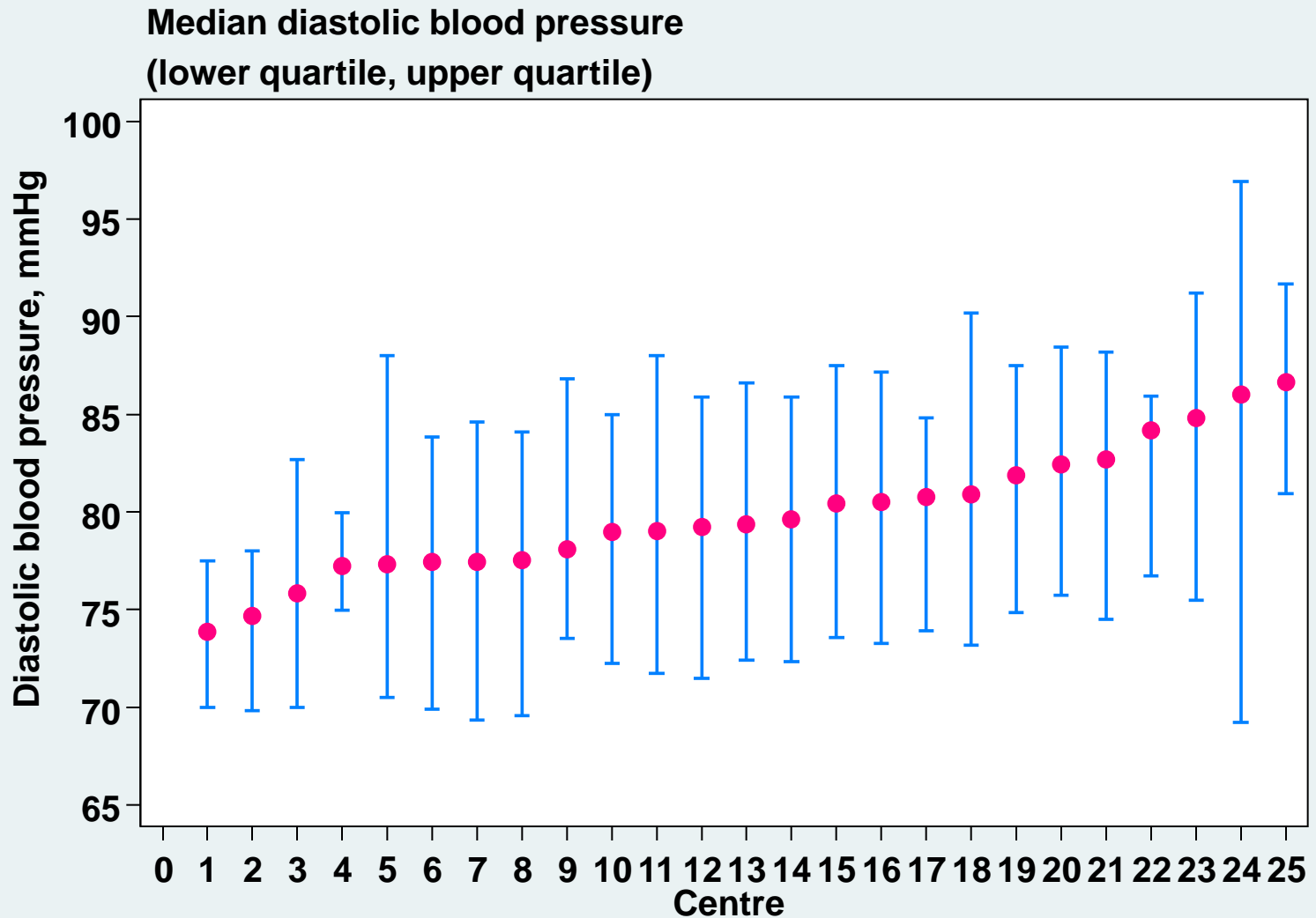
**Figure 8.1.6 (a): Variation in median systolic blood pressure among PD patients, PD centres 2010**



**Table 8.1.6 (b): Median Diastolic blood pressure among PD patients,  
PD centres**

<b>Year</b>	<b>Number of centres</b>	<b>Min</b>	<b>5<sup>th</sup> Centile</b>	<b>LQ</b>	<b>Median</b>	<b>UQ</b>	<b>95<sup>th</sup> Centile</b>	<b>Max</b>
<b>2001</b>	<b>11</b>	<b>78</b>	<b>78</b>	<b>80.9</b>	<b>83.4</b>	<b>84.8</b>	<b>88</b>	<b>88</b>
<b>2002</b>	<b>15</b>	<b>75.7</b>	<b>75.7</b>	<b>81.8</b>	<b>83.3</b>	<b>85.7</b>	<b>89.5</b>	<b>89.5</b>
<b>2003</b>	<b>18</b>	<b>77.5</b>	<b>77.5</b>	<b>81.2</b>	<b>82.9</b>	<b>84</b>	<b>88</b>	<b>88</b>
<b>2004</b>	<b>18</b>	<b>77.5</b>	<b>77.5</b>	<b>80.8</b>	<b>83.4</b>	<b>84.1</b>	<b>87</b>	<b>87</b>
<b>2005</b>	<b>19</b>	<b>74.4</b>	<b>74.4</b>	<b>80.3</b>	<b>82.8</b>	<b>84.2</b>	<b>86</b>	<b>86</b>
<b>2006</b>	<b>22</b>	<b>71.6</b>	<b>74</b>	<b>78.9</b>	<b>81.4</b>	<b>82.4</b>	<b>86.5</b>	<b>88.4</b>
<b>2007</b>	<b>22</b>	<b>68</b>	<b>77.3</b>	<b>78.9</b>	<b>80</b>	<b>82.3</b>	<b>83.2</b>	<b>87</b>
<b>2008</b>	<b>22</b>	<b>75.3</b>	<b>76.2</b>	<b>78.1</b>	<b>79.8</b>	<b>82</b>	<b>84.5</b>	<b>86.8</b>
<b>2009</b>	<b>23</b>	<b>73.3</b>	<b>73.5</b>	<b>78.5</b>	<b>79.3</b>	<b>82</b>	<b>84.3</b>	<b>87.9</b>
<b>2010</b>	<b>25</b>	<b>73.9</b>	<b>74.7</b>	<b>77.5</b>	<b>79.4</b>	<b>81.9</b>	<b>86</b>	<b>86.7</b>

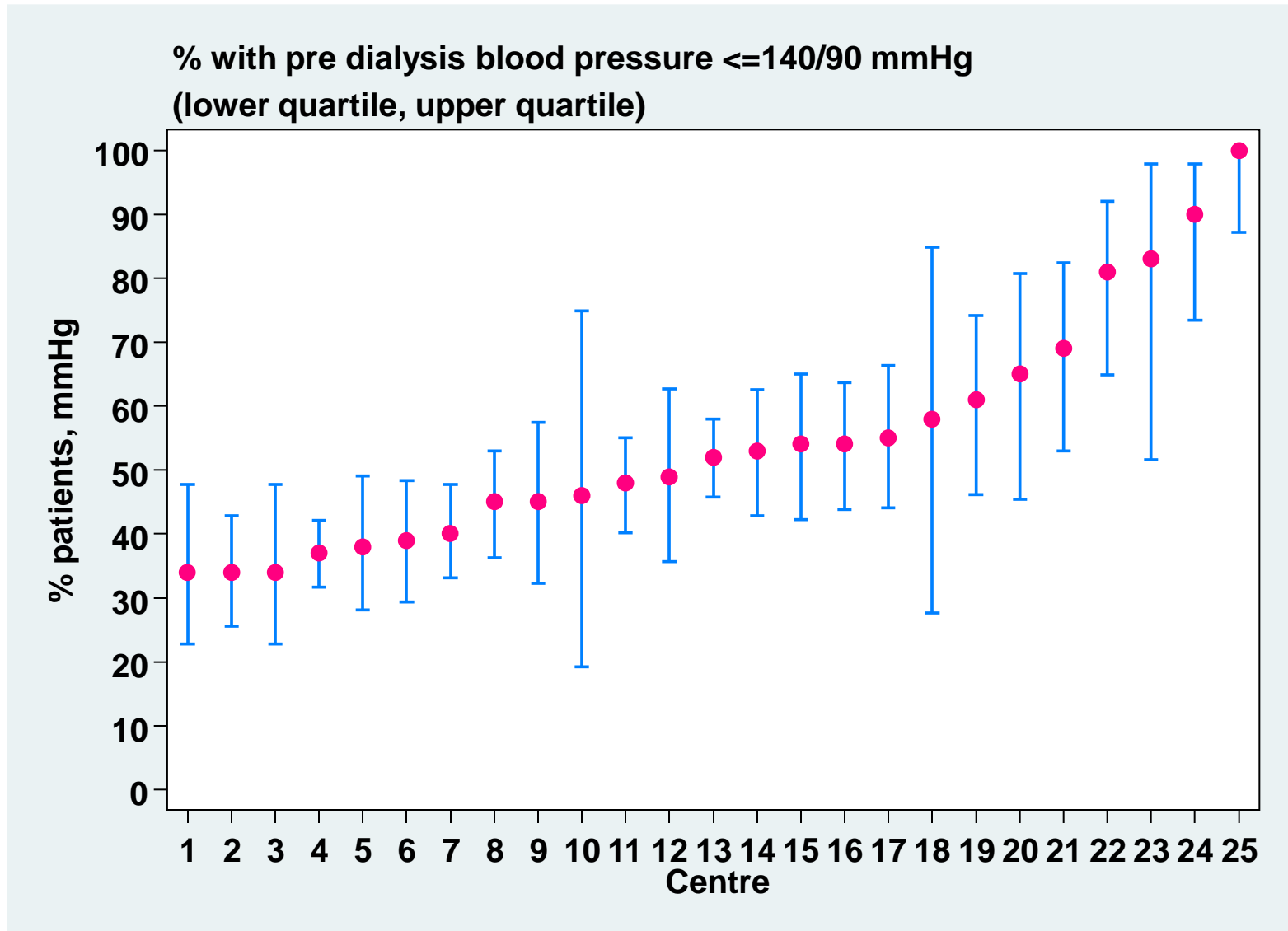
**Figure 8.1.6 (b): Variation in median diastolic blood pressure among PD patients, PD centres 2010**



**Table 8.1.6 (c): Proportion of PD patients with pre dialysis blood pressure < 140/90 mmHg, PD centres**

<b>Year</b>	<b>Number of centre</b>	<b>Min</b>	<b>5<sup>th</sup> Centile</b>	<b>LQ</b>	<b>Median</b>	<b>UQ</b>	<b>95<sup>th</sup> Centile</b>	<b>Max</b>
<b>2001</b>	<b>11</b>	<b>36</b>	<b>36</b>	<b>48</b>	<b>52</b>	<b>63</b>	<b>87</b>	<b>87</b>
<b>2002</b>	<b>15</b>	<b>19</b>	<b>19</b>	<b>33</b>	<b>47</b>	<b>56</b>	<b>90</b>	<b>90</b>
<b>2003</b>	<b>18</b>	<b>28</b>	<b>28</b>	<b>38</b>	<b>46.5</b>	<b>65</b>	<b>74</b>	<b>74</b>
<b>2004</b>	<b>18</b>	<b>30</b>	<b>30</b>	<b>38</b>	<b>47</b>	<b>56</b>	<b>73</b>	<b>73</b>
<b>2005</b>	<b>19</b>	<b>23</b>	<b>23</b>	<b>43</b>	<b>55</b>	<b>62</b>	<b>92</b>	<b>92</b>
<b>2006</b>	<b>22</b>	<b>18</b>	<b>37</b>	<b>43</b>	<b>58.5</b>	<b>70</b>	<b>100</b>	<b>100</b>
<b>2007</b>	<b>22</b>	<b>27</b>	<b>29</b>	<b>45</b>	<b>53.5</b>	<b>68</b>	<b>91</b>	<b>91</b>
<b>2008</b>	<b>22</b>	<b>28</b>	<b>29</b>	<b>42</b>	<b>54</b>	<b>58</b>	<b>87</b>	<b>96</b>
<b>2009</b>	<b>23</b>	<b>10</b>	<b>29</b>	<b>40</b>	<b>51</b>	<b>58</b>	<b>92</b>	<b>96</b>
<b>2010</b>	<b>25</b>	<b>34</b>	<b>34</b>	<b>40</b>	<b>52</b>	<b>61</b>	<b>90</b>	<b>100</b>

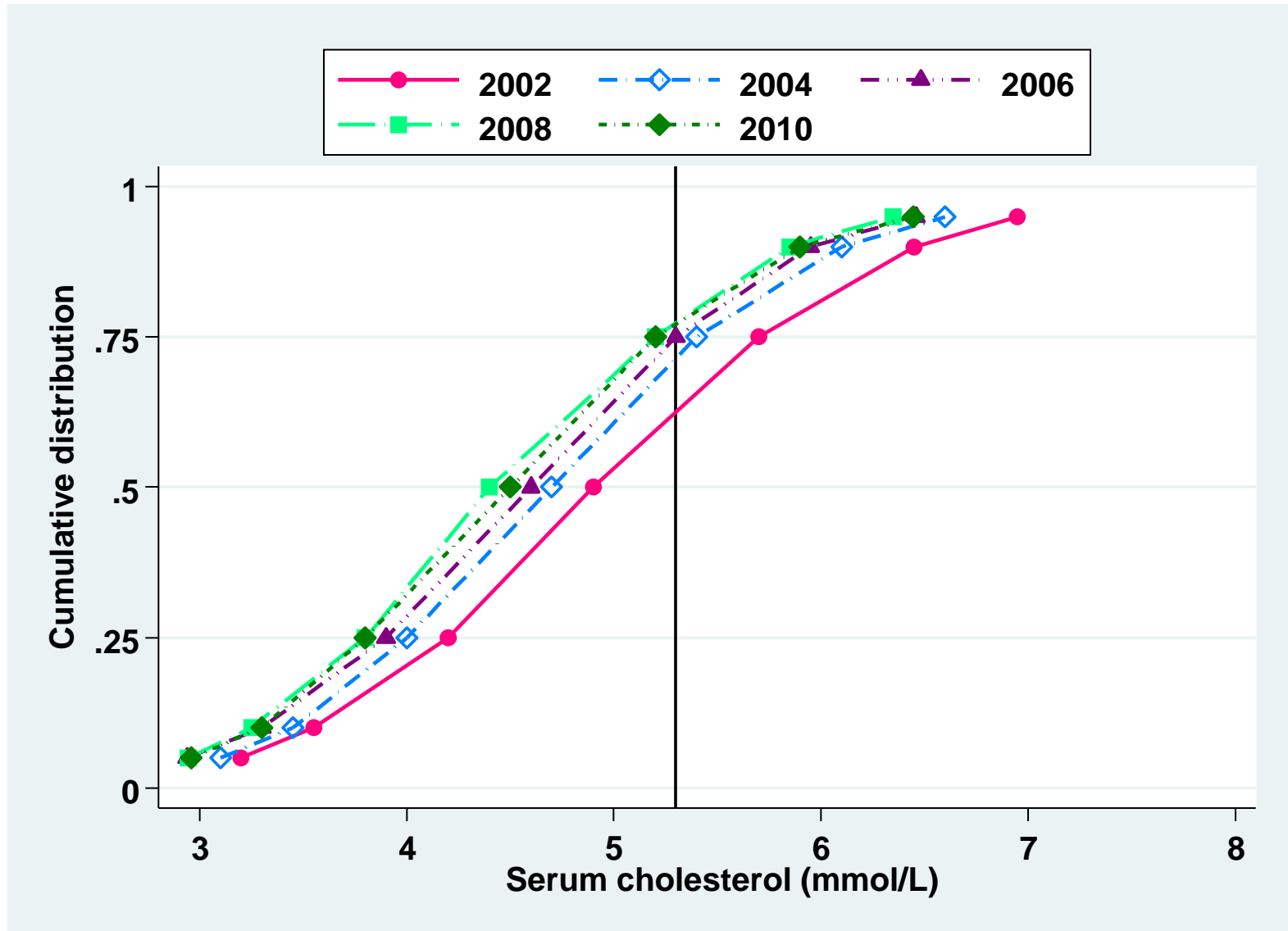
**Figure 8.1.6 (c): Variation in proportion of PD patients with pre dialysis blood pressure  $\leq 140/90$  mmHg, PD centres 2010**



**Table 8.2.1: Distribution of serum Cholesterol, HD patients 2001-2010**

Year	Number of patients	Mean	SD	Median	LQ	UQ	% patients <3.5 mmol/L	% patients 3.5-<5.3 mmol/L	% patients 5.3-<6.2 mmol/L	% patients ≥6.2 Mmol/L
2001	3898	5.1	1.3	4.9	4.2	5.8	8	52	24	16
2002	4751	5	1.2	4.9	4.2	5.7	9	55	24	13
2003	5806	4.8	1.1	4.8	4.1	5.5	9	59	21	11
2004	6710	4.7	1.1	4.7	4	5.4	11	60	21	8
2005	7906	4.7	1.1	4.6	4	5.3	12	61	19	8
2006	10139	4.6	1.1	4.6	3.9	5.3	14	62	17	7
2007	11347	4.6	1.1	4.5	3.8	5.2	14	63	17	6
2008	13820	4.5	1.1	4.4	3.8	5.2	15	63	16	6
2009	15905	4.6	1.1	4.5	3.8	5.2	14	63	16	6
2010	17424	4.6	1.1	4.5	3.8	5.2	14	63	16	7

**Figure 8.2.1: Cumulative distribution of Cholesterol, HD patients  
2001-2010**

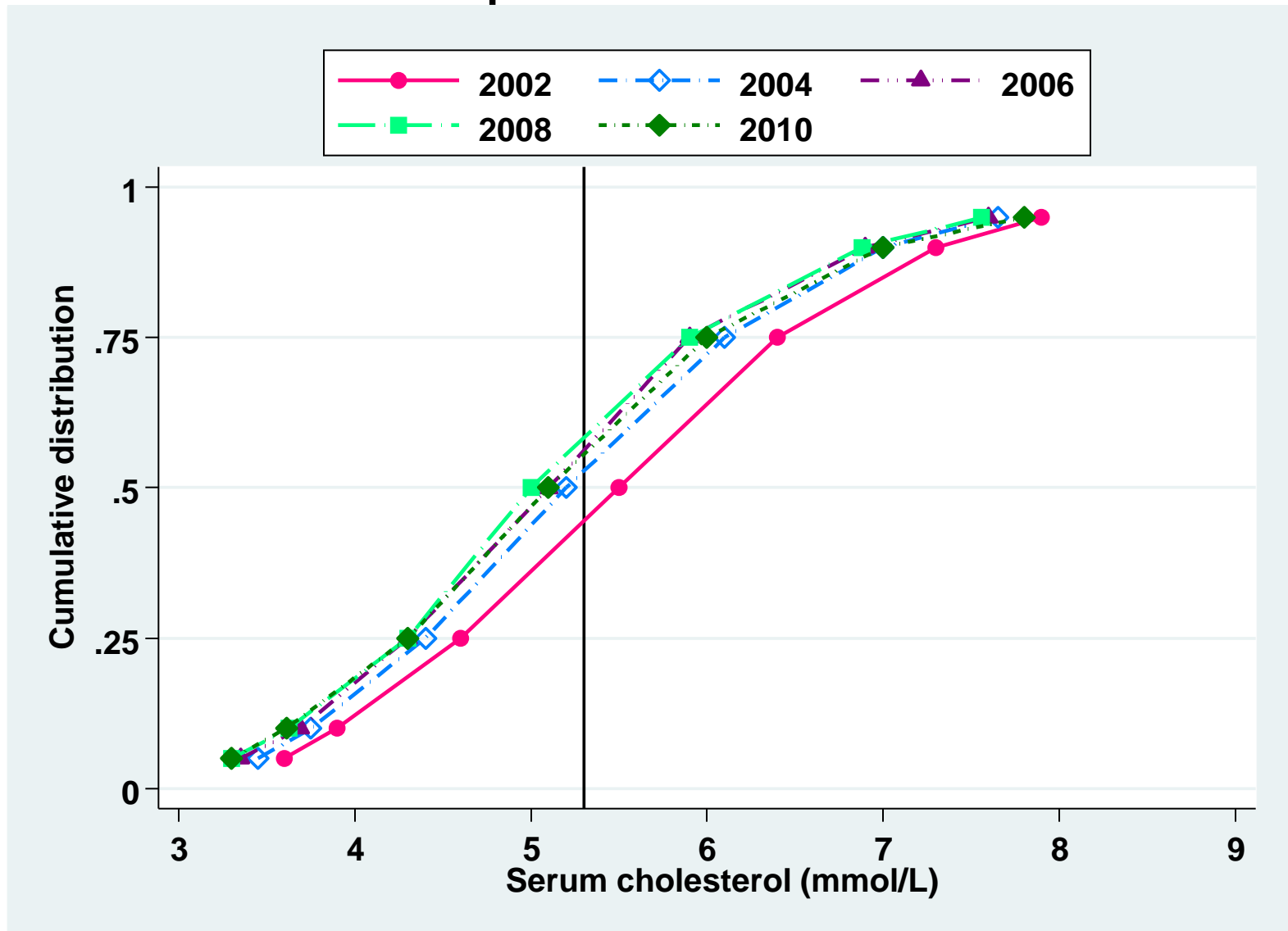


**Table 8.2.2: Distribution of serum Cholesterol, PD patients 2001-2010**

Year	Number of patients	Mean	SD	Median	LQ	UQ	% patients <3.5 mmol/L	% patients 3.5-<5.3 mmol/L	% patients 5.3-<6.2 mmol/L	% patients ≥6.2 Mmol/L
2001	581	5.8	1.4	5.7	4.8	6.6	2	36	27	35
2002	766	5.6	1.4	5.5	4.6	6.4	4	38	28	29
2003	1104	5.4	1.4	5.3	4.4	6.1	5	45	27	23
2004	1230	5.3	1.4	5.2	4.4	6.1	5	48	26	21
2005	1242	5.2	1.3	5	4.3	5.9	5	55	22	18
2006	1395	5.2	1.4	5.1	4.3	5.9	6	51	25	18
2007	1629	5.1	1.3	5.1	4.2	5.9	8	50	24	18
2008	1902	5.2	1.4	5	4.3	5.9	7	51	23	18
2009	2016	5.3	1.5	5.1	4.3	6	6	50	24	20
2010	2186	5.2	1.4	5.1	4.3	6	7	49	24	20



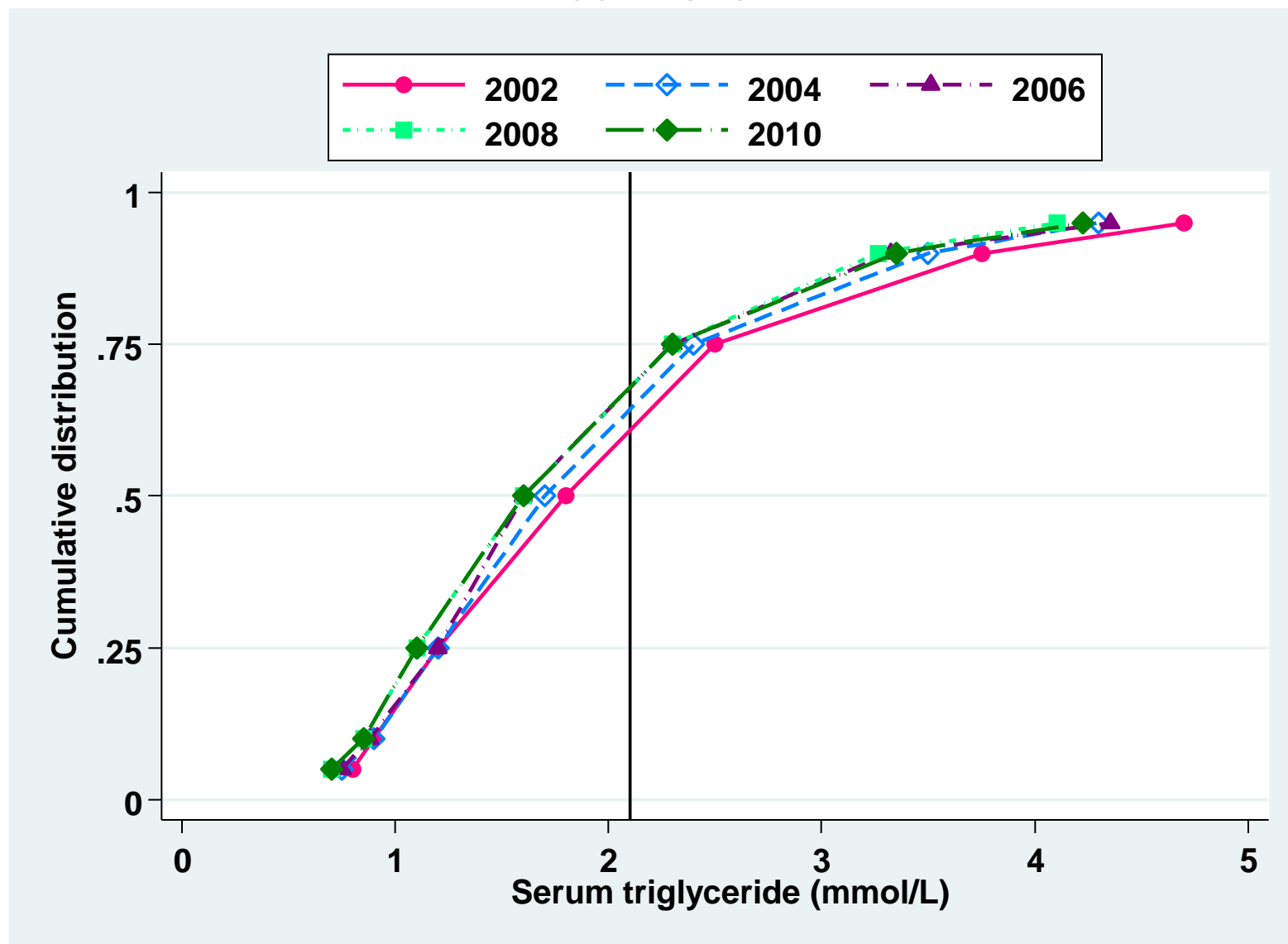
**Figure 8.2.2: Cumulative distribution of Cholesterol (mmol/L), PD patients 2001-2010**



**Table 8.2.3: Distribution of serum Triglyceride, HD patients 2001-2010**

Year	Number of patients	Mean	SD	Median	LQ	UQ	% patients <1.7 mmol/L	% patients 1.7-<2.3 mmol/L	% patients 2.3-<3.5 mmol/L	% patients ≥3.5 mmol/L
2001	3162	2.1	1.4	1.7	1.2	2.5	48	22	17	13
2002	3861	2.1	1.4	1.8	1.2	2.5	47	22	18	12
2003	4710	2	1.3	1.7	1.2	2.5	48	23	18	11
2004	5607	2	1.2	1.7	1.2	2.4	51	23	17	10
2005	6950	2	1.3	1.7	1.2	2.4	50	22	18	10
2006	9522	2	1.3	1.6	1.2	2.3	54	21	16	9
2007	10882	1.9	1.2	1.6	1.1	2.3	55	21	16	8
2008	12927	1.9	1.2	1.6	1.1	2.3	56	20	15	8
2009	15184	1.9	1.3	1.6	1.1	2.3	54	21	16	9
2010	16737	1.9	1.3	1.6	1.1	2.3	54	21	16	9

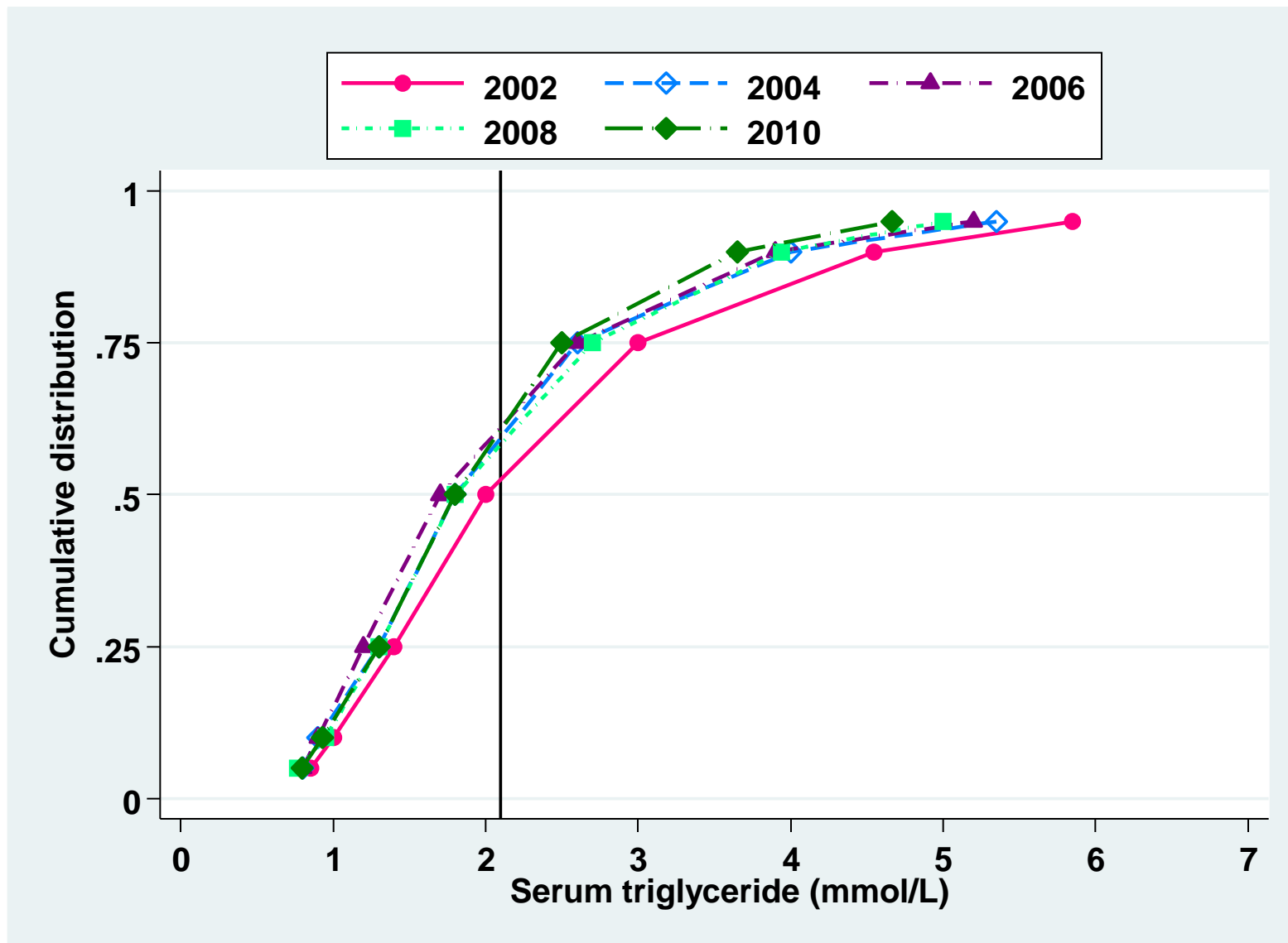
**Figure 8.2.3: Cumulative distribution of serum triglyceride, HD patients  
2001-2010**



**Table 8.2.4: Distribution of serum Triglyceride, PD patients 2001-2010**

Year	Number of patients	Mean	SD	Median	LQ	UQ	% patients <1.7 mmol/L	% patients 1.7-<2.3 mmol/L	% patients 2.3-<3.5 mmol/L	% patients ≥3.5 mmol/L
2001	576	2.6	1.8	2	1.4	3	36	22	22	20
2002	767	2.5	1.7	2	1.4	3	39	21	22	18
2003	1100	2.3	1.6	1.8	1.2	2.8	45	20	21	14
2004	1223	2.2	1.6	1.8	1.3	2.6	47	23	17	13
2005	1241	2.2	1.5	1.8	1.3	2.7	43	24	18	14
2006	1391	2.2	1.6	1.7	1.2	2.6	47	21	18	13
2007	1625	2.1	1.4	1.8	1.3	2.6	45	24	19	12
2008	1907	2.2	1.5	1.8	1.3	2.7	45	21	20	14
2009	2017	2.2	1.6	1.8	1.3	2.7	46	21	20	14
2010	2177	2.1	1.4	1.8	1.3	2.5	47	23	18	11

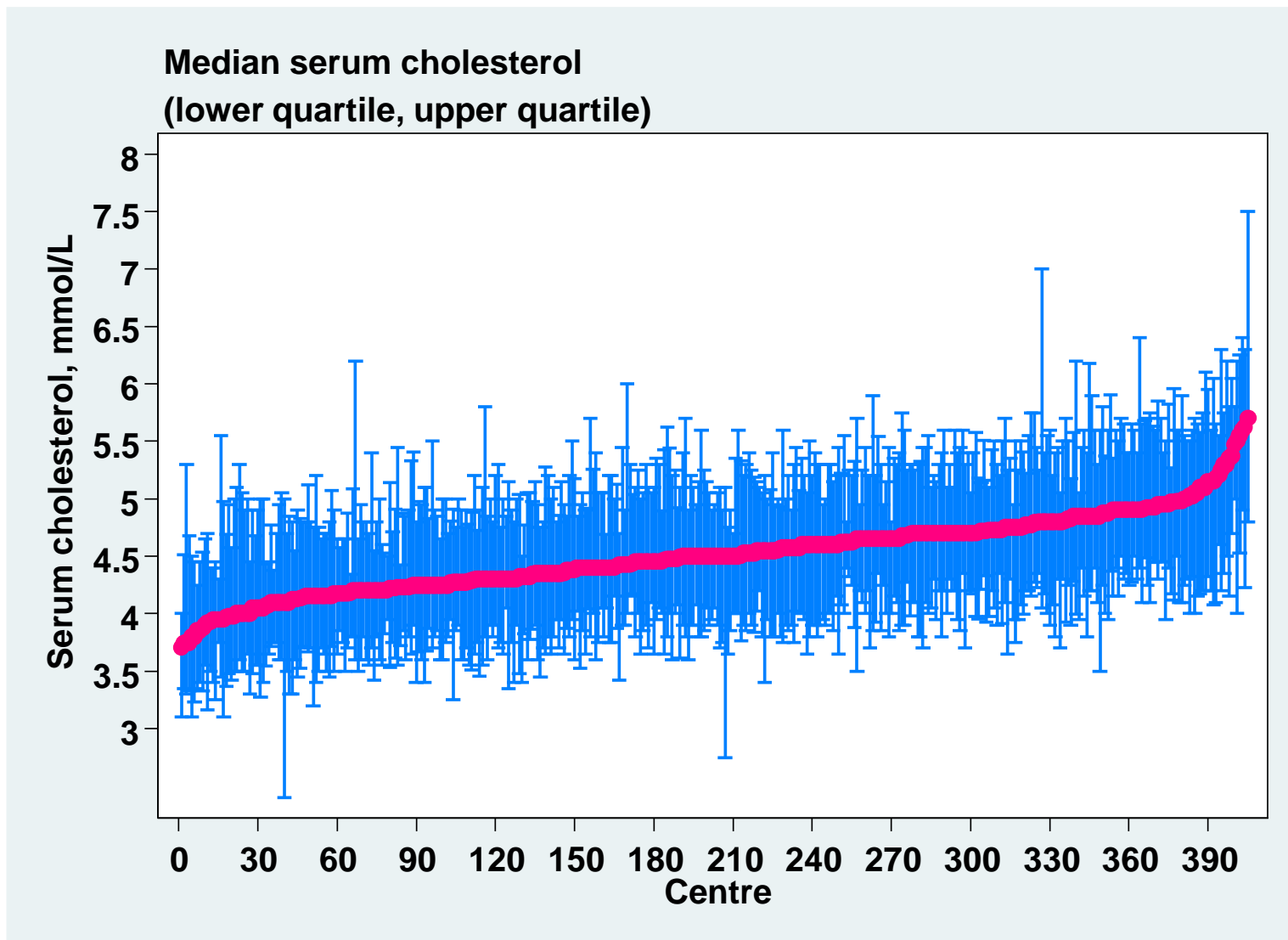
**Figure 8.2.4: Cumulative distribution of serum triglyceride, PD patients 2001-2010**



**Table 8.2.5 (a): Median serum cholesterol level among HD patients**

<b>Year</b>	<b>Number of centres</b>	<b>Min</b>	<b>5<sup>th</sup> Centile</b>	<b>LQ</b>	<b>Median</b>	<b>UQ</b>	<b>95<sup>th</sup> Centile</b>	<b>Max</b>
<b>2001</b>	<b>96</b>	<b>4.1</b>	<b>4.4</b>	<b>4.7</b>	<b>5</b>	<b>5.2</b>	<b>5.6</b>	<b>6.3</b>
<b>2002</b>	<b>122</b>	<b>4.3</b>	<b>4.5</b>	<b>4.7</b>	<b>4.9</b>	<b>5.1</b>	<b>5.5</b>	<b>6.4</b>
<b>2003</b>	<b>153</b>	<b>4.2</b>	<b>4.3</b>	<b>4.6</b>	<b>4.8</b>	<b>5</b>	<b>5.3</b>	<b>5.6</b>
<b>2004</b>	<b>182</b>	<b>3.9</b>	<b>4.2</b>	<b>4.5</b>	<b>4.7</b>	<b>4.9</b>	<b>5.3</b>	<b>6.1</b>
<b>2005</b>	<b>214</b>	<b>3.8</b>	<b>4.1</b>	<b>4.4</b>	<b>4.6</b>	<b>4.8</b>	<b>5.2</b>	<b>5.7</b>
<b>2006</b>	<b>267</b>	<b>3.4</b>	<b>3.9</b>	<b>4.3</b>	<b>4.6</b>	<b>4.8</b>	<b>5.1</b>	<b>5.9</b>
<b>2007</b>	<b>286</b>	<b>3.6</b>	<b>4</b>	<b>4.3</b>	<b>4.5</b>	<b>4.8</b>	<b>5.1</b>	<b>5.4</b>
<b>2008</b>	<b>341</b>	<b>3.4</b>	<b>3.9</b>	<b>4.3</b>	<b>4.5</b>	<b>4.7</b>	<b>5.1</b>	<b>6.3</b>
<b>2009</b>	<b>377</b>	<b>3.5</b>	<b>4</b>	<b>4.3</b>	<b>4.5</b>	<b>4.7</b>	<b>5.1</b>	<b>5.6</b>
<b>2010</b>	<b>405</b>	<b>3.7</b>	<b>4</b>	<b>4.3</b>	<b>4.5</b>	<b>4.7</b>	<b>5.1</b>	<b>5.7</b>

**Figure 8.2.5 (a): Variation in median serum cholesterol level among HD patients, HD centres 2010**

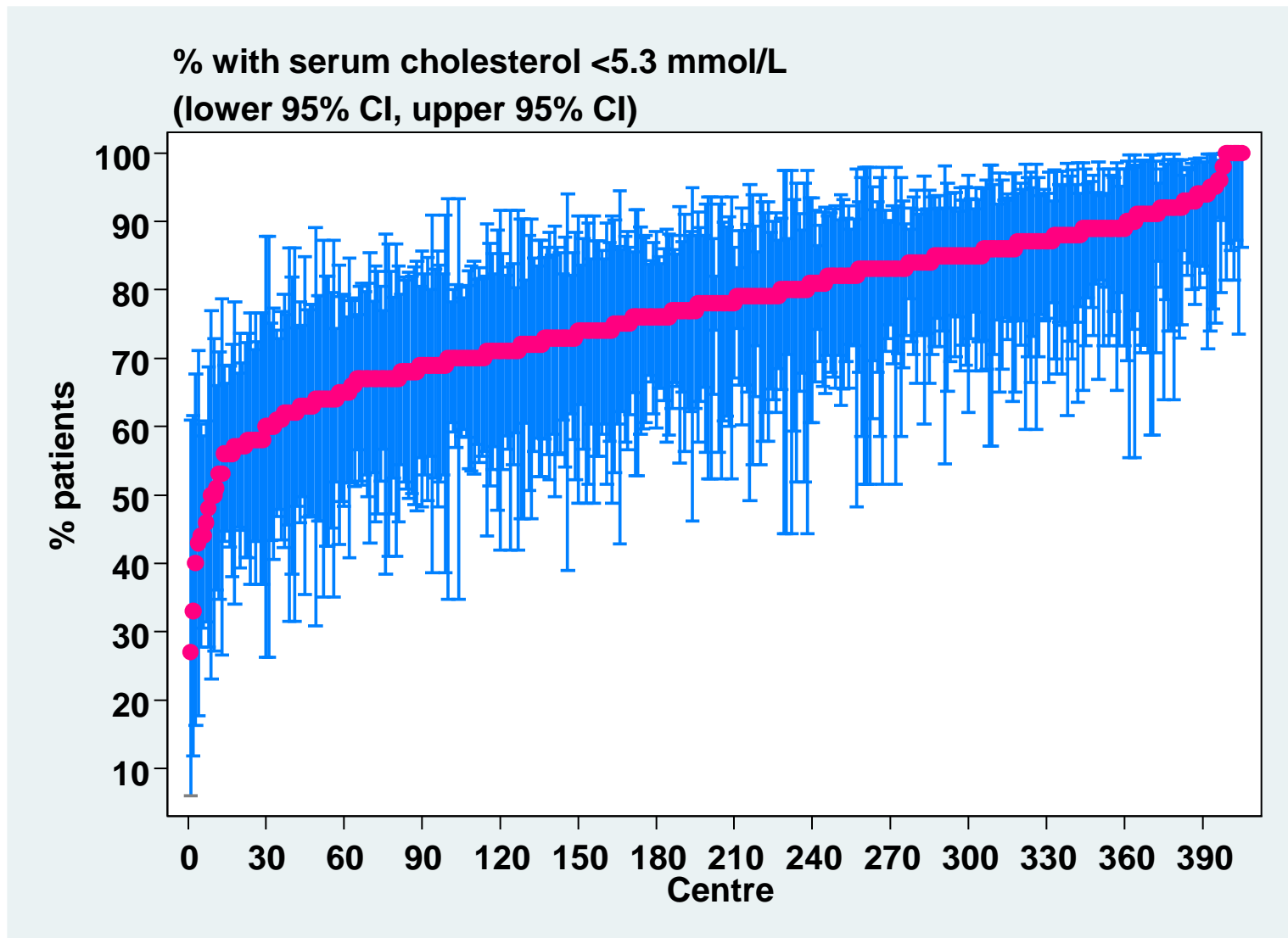


**Table 8.2.5 (b): Proportion of HD patients with serum cholesterol < 5.3 mmol/L**

<b>Year</b>	<b>Number of centre</b>	<b>Min</b>	<b>5<sup>th</sup> Centile</b>	<b>LQ</b>	<b>Median</b>	<b>UQ</b>	<b>95<sup>th</sup> Centile</b>	<b>Max</b>
<b>2001</b>	<b>96</b>	<b>14</b>	<b>36</b>	<b>54</b>	<b>60</b>	<b>69</b>	<b>80</b>	<b>89</b>
<b>2002</b>	<b>122</b>	<b>28</b>	<b>44</b>	<b>58</b>	<b>64</b>	<b>71</b>	<b>78</b>	<b>93</b>
<b>2003</b>	<b>153</b>	<b>40</b>	<b>47</b>	<b>60</b>	<b>68</b>	<b>76</b>	<b>83</b>	<b>92</b>
<b>2004</b>	<b>182</b>	<b>38</b>	<b>48</b>	<b>61</b>	<b>70</b>	<b>79</b>	<b>90</b>	<b>94</b>
<b>2005</b>	<b>214</b>	<b>38</b>	<b>52</b>	<b>66</b>	<b>74</b>	<b>81</b>	<b>91</b>	<b>100</b>
<b>2006</b>	<b>267</b>	<b>23</b>	<b>56</b>	<b>69</b>	<b>76</b>	<b>83</b>	<b>92</b>	<b>100</b>
<b>2007</b>	<b>286</b>	<b>38</b>	<b>59</b>	<b>69</b>	<b>77</b>	<b>84</b>	<b>93</b>	<b>100</b>
<b>2008</b>	<b>341</b>	<b>30</b>	<b>58</b>	<b>70</b>	<b>79</b>	<b>86</b>	<b>93</b>	<b>100</b>
<b>2009</b>	<b>377</b>	<b>36</b>	<b>58</b>	<b>70</b>	<b>78</b>	<b>85</b>	<b>93</b>	<b>100</b>
<b>2010</b>	<b>405</b>	<b>27</b>	<b>57</b>	<b>70</b>	<b>78</b>	<b>85</b>	<b>93</b>	<b>100</b>



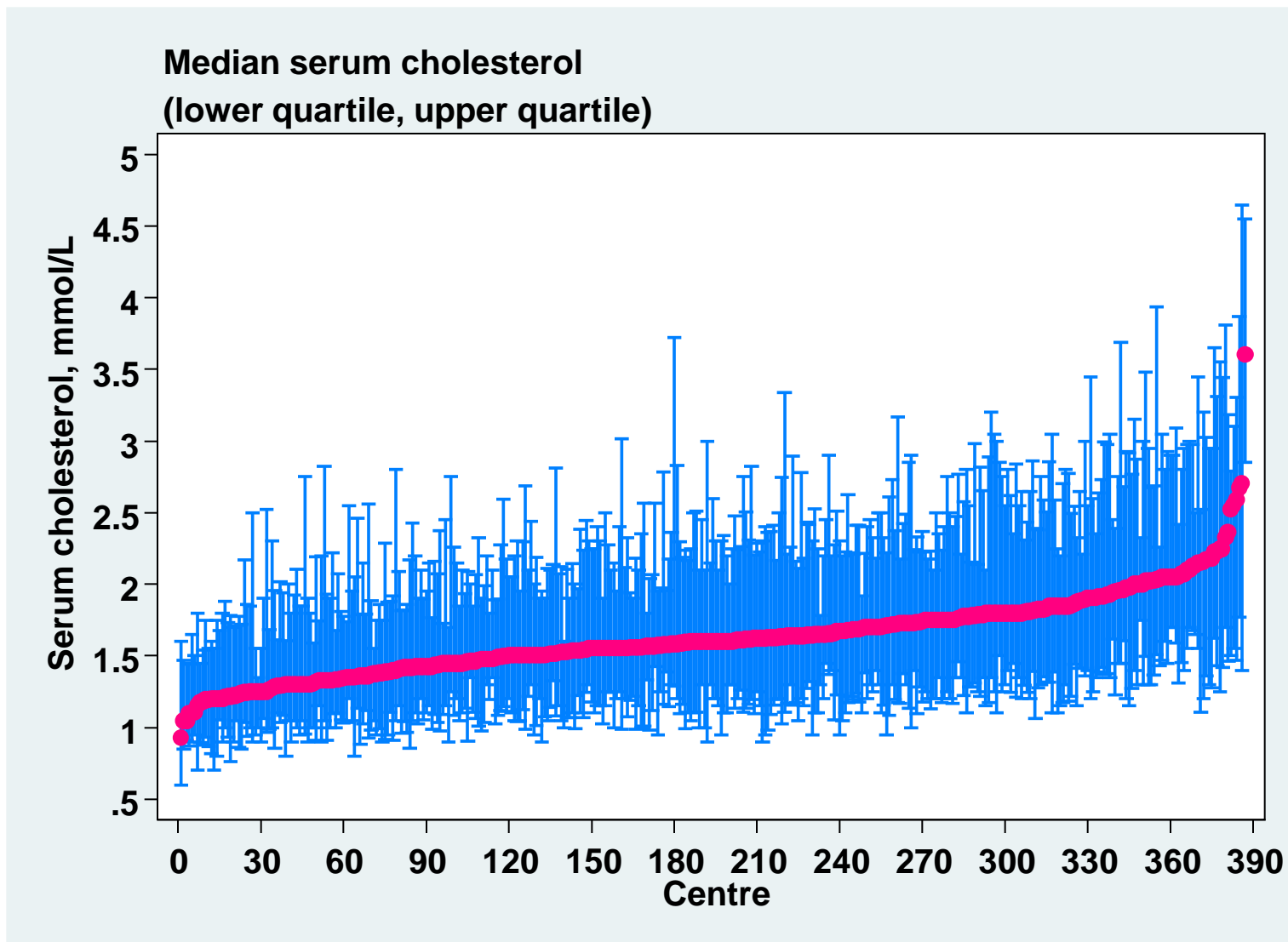
**Figure 8.2.5 (b): Variation in proportion of patients with serum cholesterol < 5.3 mmol/L, HD centres 2010**



**Table 8.2.5 (c): Median serum triglyceride level among HD patients**

<b>Year</b>	<b>Number of centres</b>	<b>Min</b>	<b>5<sup>th</sup> Centile</b>	<b>LQ</b>	<b>Median</b>	<b>UQ</b>	<b>95<sup>th</sup> Centile</b>	<b>Max</b>
<b>2001</b>	<b>83</b>	<b>1.1</b>	<b>1.4</b>	<b>1.5</b>	<b>1.7</b>	<b>2</b>	<b>2.3</b>	<b>3.1</b>
<b>2002</b>	<b>98</b>	<b>1.1</b>	<b>1.4</b>	<b>1.6</b>	<b>1.8</b>	<b>2</b>	<b>2.3</b>	<b>3.2</b>
<b>2003</b>	<b>130</b>	<b>1.2</b>	<b>1.3</b>	<b>1.5</b>	<b>1.7</b>	<b>1.9</b>	<b>2.2</b>	<b>2.5</b>
<b>2004</b>	<b>157</b>	<b>1</b>	<b>1.3</b>	<b>1.5</b>	<b>1.7</b>	<b>1.8</b>	<b>2.2</b>	<b>3</b>
<b>2005</b>	<b>194</b>	<b>0.9</b>	<b>1.3</b>	<b>1.5</b>	<b>1.7</b>	<b>1.9</b>	<b>2.2</b>	<b>2.6</b>
<b>2006</b>	<b>254</b>	<b>0.9</b>	<b>1.3</b>	<b>1.5</b>	<b>1.6</b>	<b>1.8</b>	<b>2.2</b>	<b>4</b>
<b>2007</b>	<b>274</b>	<b>0.8</b>	<b>1.2</b>	<b>1.4</b>	<b>1.6</b>	<b>1.8</b>	<b>2.1</b>	<b>2.9</b>
<b>2008</b>	<b>317</b>	<b>1</b>	<b>1.2</b>	<b>1.4</b>	<b>1.6</b>	<b>1.7</b>	<b>2</b>	<b>2.3</b>
<b>2009</b>	<b>353</b>	<b>1</b>	<b>1.2</b>	<b>1.4</b>	<b>1.6</b>	<b>1.8</b>	<b>2.1</b>	<b>2.4</b>
<b>2010</b>	<b>387</b>	<b>0.9</b>	<b>1.2</b>	<b>1.5</b>	<b>1.6</b>	<b>1.8</b>	<b>2.1</b>	<b>3.6</b>

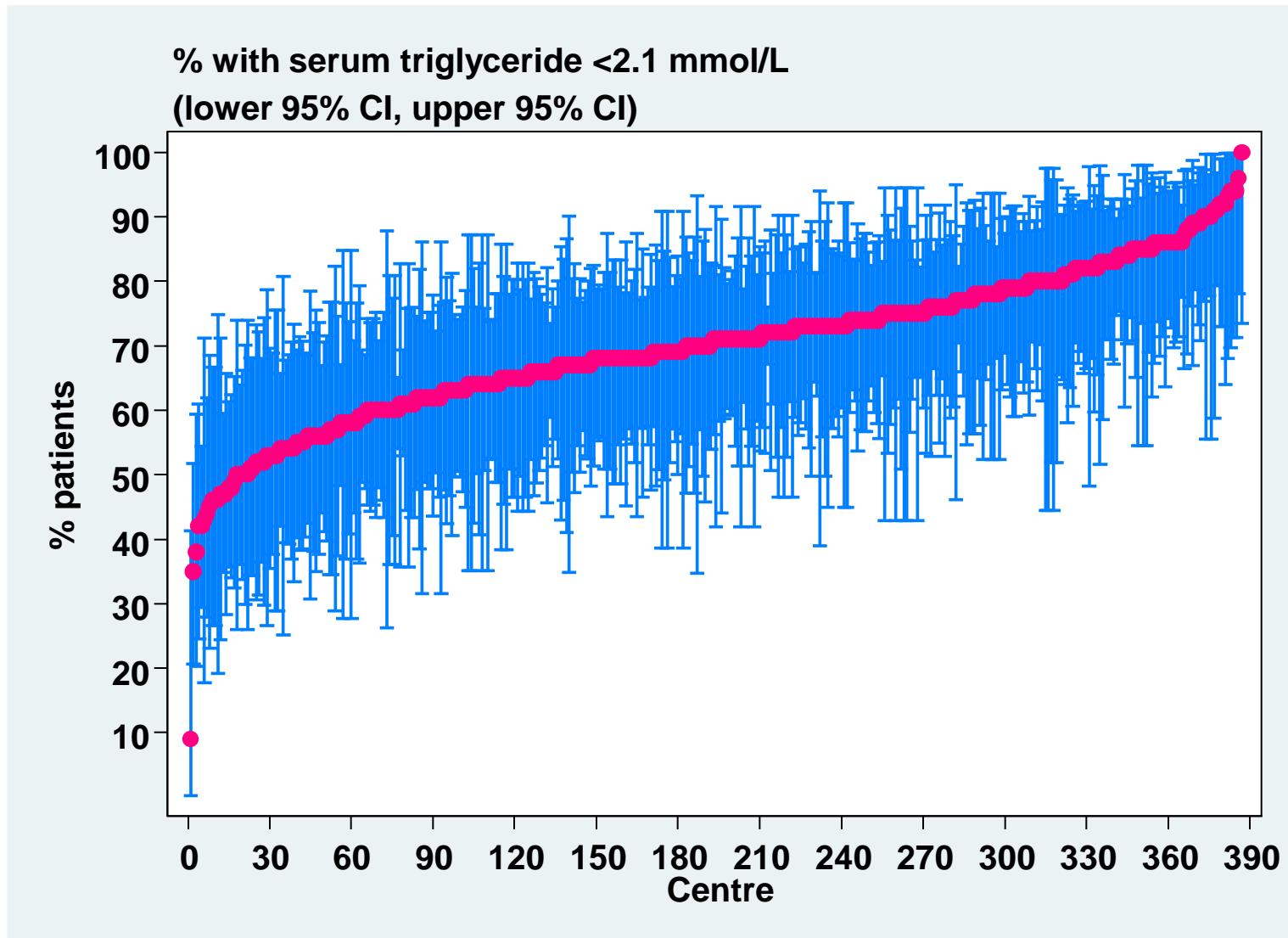
**Figure 8.2.5 (c): Variation in median serum triglyceride level among HD patients, HD centers 2010**



**Table 8.2.5 (d): Proportion of HD patients with serum triglyceride < 2.1mmol/L**

<b>Year</b>	<b>Number of centres</b>	<b>Min</b>	<b>5<sup>th</sup> Centile</b>	<b>LQ</b>	<b>Median</b>	<b>UQ</b>	<b>95<sup>th</sup> Centile</b>	<b>Max</b>
<b>2001</b>	<b>83</b>	<b>29</b>	<b>45</b>	<b>57</b>	<b>66</b>	<b>76</b>	<b>86</b>	<b>90</b>
<b>2002</b>	<b>98</b>	<b>27</b>	<b>44</b>	<b>55</b>	<b>65.5</b>	<b>72</b>	<b>81</b>	<b>93</b>
<b>2003</b>	<b>130</b>	<b>27</b>	<b>44</b>	<b>58</b>	<b>67.5</b>	<b>75</b>	<b>90</b>	<b>100</b>
<b>2004</b>	<b>157</b>	<b>20</b>	<b>47</b>	<b>60</b>	<b>68</b>	<b>79</b>	<b>87</b>	<b>96</b>
<b>2005</b>	<b>194</b>	<b>29</b>	<b>44</b>	<b>59</b>	<b>67</b>	<b>74</b>	<b>84</b>	<b>100</b>
<b>2006</b>	<b>254</b>	<b>7</b>	<b>46</b>	<b>63</b>	<b>70</b>	<b>76</b>	<b>88</b>	<b>100</b>
<b>2007</b>	<b>274</b>	<b>36</b>	<b>50</b>	<b>63</b>	<b>70</b>	<b>78</b>	<b>88</b>	<b>95</b>
<b>2008</b>	<b>317</b>	<b>36</b>	<b>54</b>	<b>64</b>	<b>71</b>	<b>79</b>	<b>87</b>	<b>100</b>
<b>2009</b>	<b>353</b>	<b>38</b>	<b>50</b>	<b>63</b>	<b>70</b>	<b>77</b>	<b>88</b>	<b>100</b>
<b>2010</b>	<b>387</b>	<b>9</b>	<b>50</b>	<b>63</b>	<b>71</b>	<b>78</b>	<b>88</b>	<b>100</b>

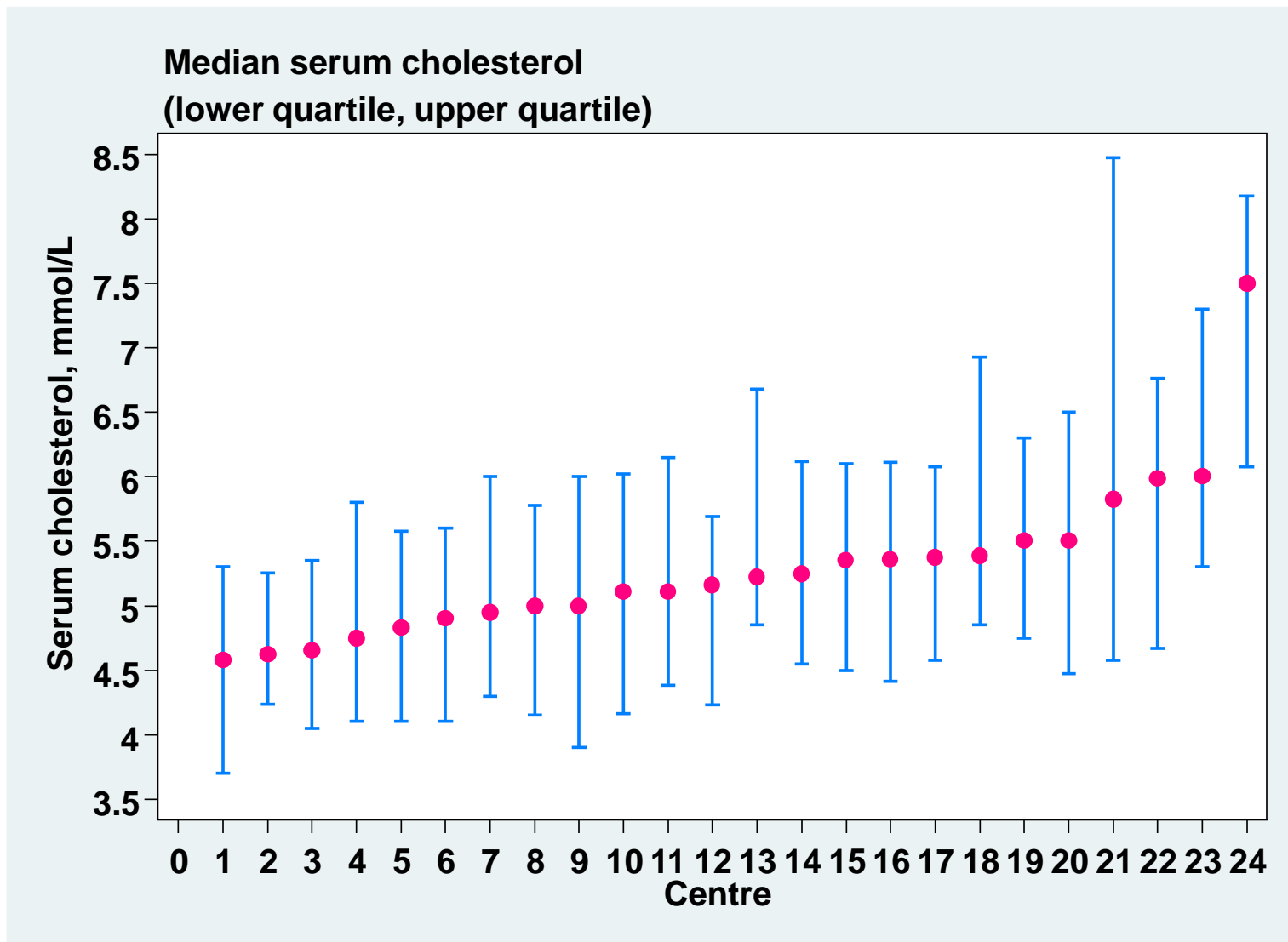
**Figure 8.2.5 (d): Variation in proportion of patients with serum triglyceride < 2.1 mmol/L, HD centers 2010**



**Table 8.2.6 (a): Median serum cholesterol level among PD patients**

<b>Year</b>	<b>Number of centres</b>	<b>Min</b>	<b>5<sup>th</sup> Centile</b>	<b>LQ</b>	<b>Median</b>	<b>UQ</b>	<b>95<sup>th</sup> Centile</b>	<b>Max</b>
<b>2001</b>	<b>10</b>	<b>5</b>	<b>5</b>	<b>5.6</b>	<b>5.9</b>	<b>6.1</b>	<b>6.2</b>	<b>6.2</b>
<b>2002</b>	<b>15</b>	<b>4.9</b>	<b>4.9</b>	<b>5.4</b>	<b>5.5</b>	<b>5.7</b>	<b>6.2</b>	<b>6.2</b>
<b>2003</b>	<b>18</b>	<b>4.5</b>	<b>4.5</b>	<b>5</b>	<b>5.3</b>	<b>5.7</b>	<b>5.9</b>	<b>5.9</b>
<b>2004</b>	<b>18</b>	<b>4.6</b>	<b>4.6</b>	<b>4.9</b>	<b>5.3</b>	<b>5.5</b>	<b>6.1</b>	<b>6.1</b>
<b>2005</b>	<b>19</b>	<b>4.4</b>	<b>4.4</b>	<b>4.7</b>	<b>5</b>	<b>5.4</b>	<b>5.9</b>	<b>5.9</b>
<b>2006</b>	<b>21</b>	<b>4.4</b>	<b>4.6</b>	<b>4.9</b>	<b>5</b>	<b>5.3</b>	<b>6.1</b>	<b>6.2</b>
<b>2007</b>	<b>22</b>	<b>4.5</b>	<b>4.5</b>	<b>4.8</b>	<b>5.2</b>	<b>5.4</b>	<b>6.1</b>	<b>6.3</b>
<b>2008</b>	<b>21</b>	<b>4.3</b>	<b>4.5</b>	<b>4.8</b>	<b>5.1</b>	<b>5.4</b>	<b>5.5</b>	<b>5.8</b>
<b>2009</b>	<b>21</b>	<b>4.6</b>	<b>4.7</b>	<b>4.8</b>	<b>5.1</b>	<b>5.4</b>	<b>5.8</b>	<b>6.8</b>
<b>2010</b>	<b>24</b>	<b>4.6</b>	<b>4.6</b>	<b>4.9</b>	<b>5.2</b>	<b>5.4</b>	<b>6</b>	<b>7.5</b>

**Figure 8.2.6 (a): Variation in median serum cholesterol level among PD patients, PD centres 2010**

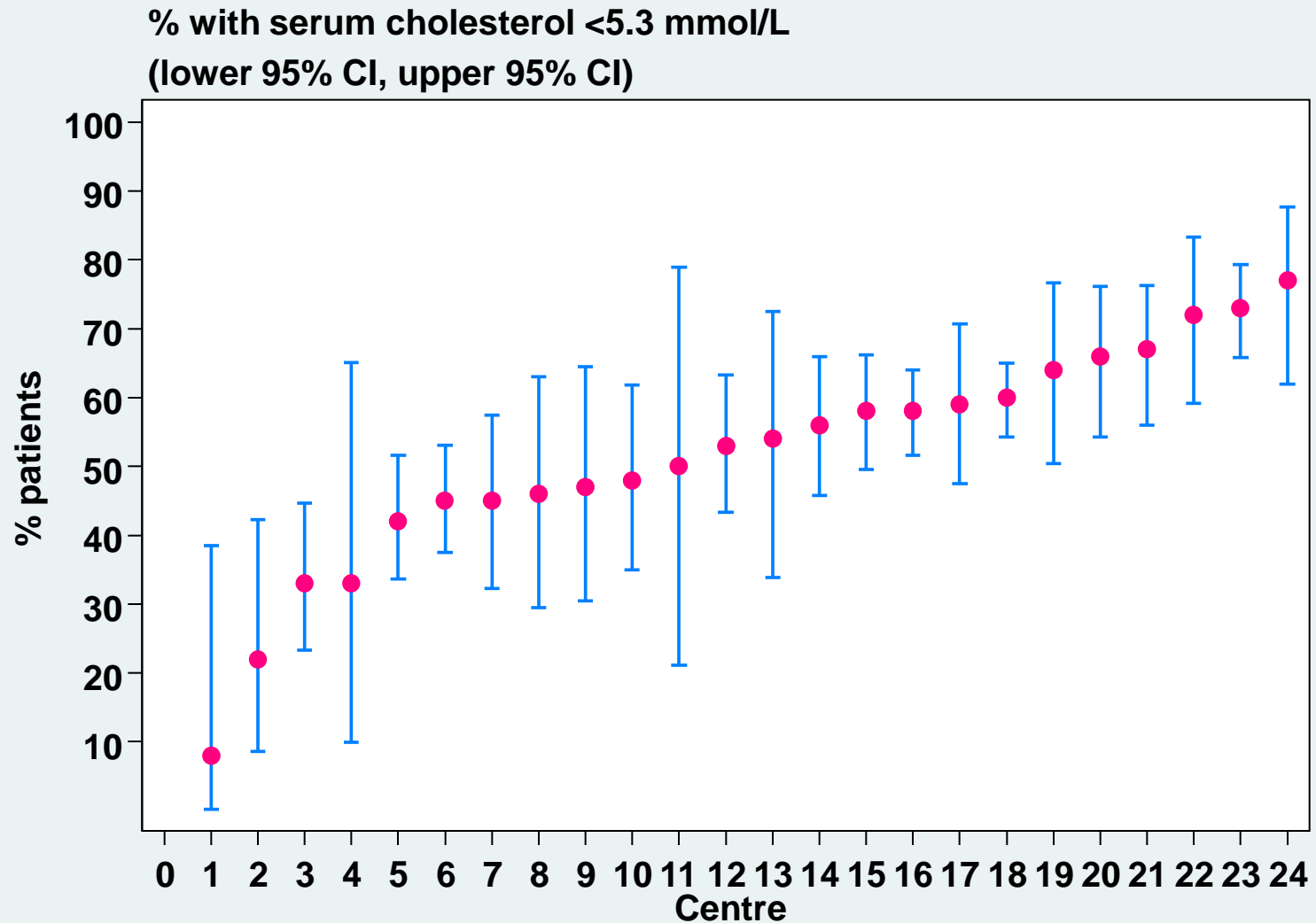


**Table 8.2.6 (b): Proportion of PD patients with serum cholesterol < 5.3 mmol/L**

<b>Year</b>	<b>Number of centres</b>	<b>Min</b>	<b>5<sup>th</sup> Centile</b>	<b>LQ</b>	<b>Median</b>	<b>UQ</b>	<b>95<sup>th</sup> Centile</b>	<b>Max</b>
<b>2001</b>	<b>10</b>	<b>22</b>	<b>22</b>	<b>30</b>	<b>34.5</b>	<b>45</b>	<b>63</b>	<b>63</b>
<b>2002</b>	<b>15</b>	<b>13</b>	<b>13</b>	<b>33</b>	<b>42</b>	<b>45</b>	<b>80</b>	<b>80</b>
<b>2003</b>	<b>18</b>	<b>22</b>	<b>22</b>	<b>39</b>	<b>48.5</b>	<b>59</b>	<b>83</b>	<b>83</b>
<b>2004</b>	<b>18</b>	<b>24</b>	<b>24</b>	<b>42</b>	<b>51</b>	<b>60</b>	<b>71</b>	<b>71</b>
<b>2005</b>	<b>19</b>	<b>29</b>	<b>29</b>	<b>47</b>	<b>60</b>	<b>70</b>	<b>77</b>	<b>77</b>
<b>2006</b>	<b>21</b>	<b>20</b>	<b>25</b>	<b>48</b>	<b>59</b>	<b>66</b>	<b>75</b>	<b>79</b>
<b>2007</b>	<b>22</b>	<b>29</b>	<b>30</b>	<b>47</b>	<b>52.5</b>	<b>68</b>	<b>77</b>	<b>86</b>
<b>2008</b>	<b>21</b>	<b>42</b>	<b>42</b>	<b>47</b>	<b>56</b>	<b>69</b>	<b>75</b>	<b>77</b>
<b>2009</b>	<b>21</b>	<b>17</b>	<b>37</b>	<b>48</b>	<b>54</b>	<b>62</b>	<b>74</b>	<b>77</b>
<b>2010</b>	<b>24</b>	<b>8</b>	<b>22</b>	<b>45</b>	<b>53.5</b>	<b>62</b>	<b>73</b>	<b>77</b>



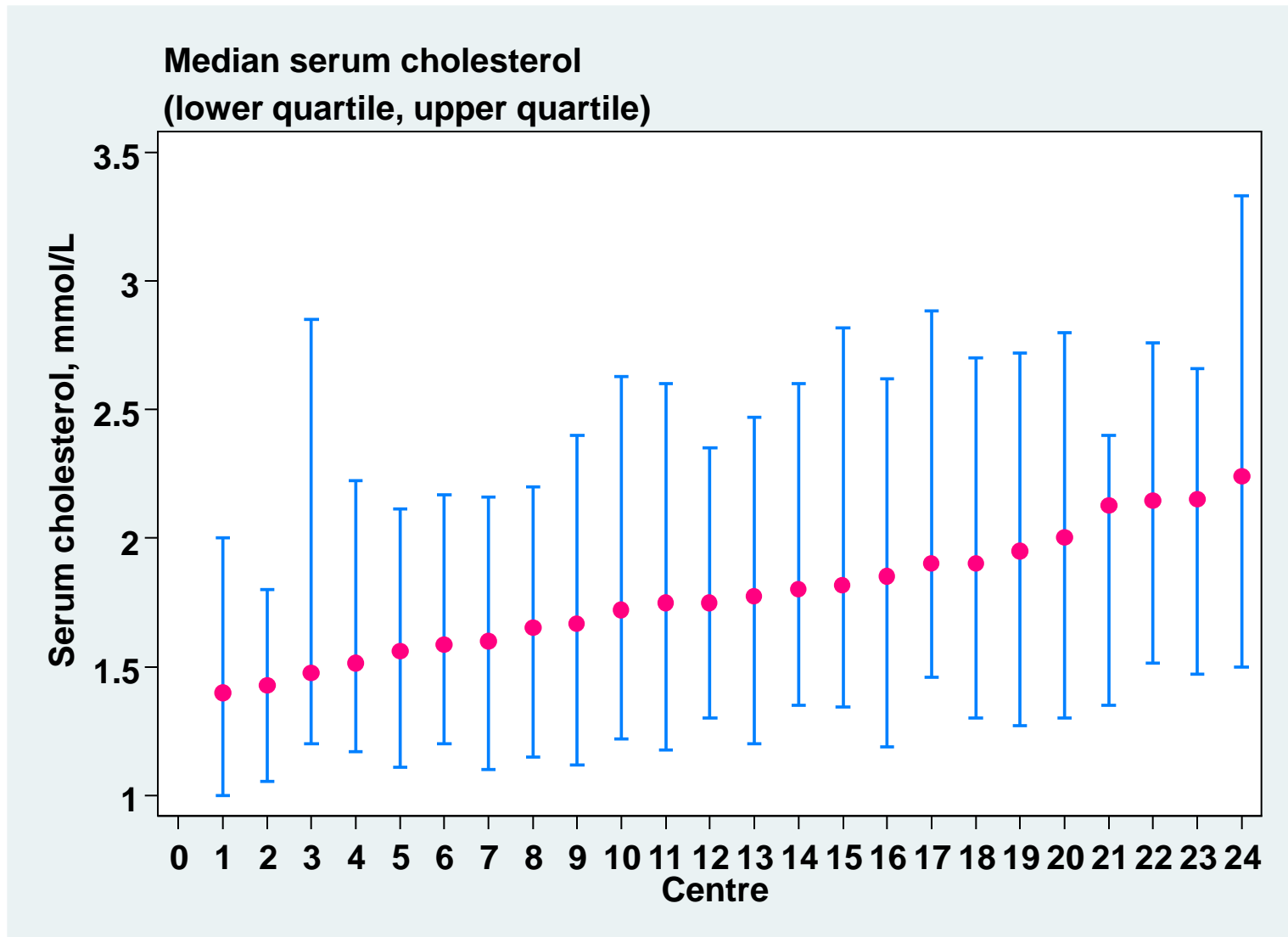
**Figure 8.2.6 (b): Variation in proportion of patients with serum cholesterol < 5.3 mmol/L, PD centres 2010**



**Table 8.2.6 (c): Median serum triglyceride level among PD patients**

<b>Year</b>	<b>Number of Centres</b>	<b>Min</b>	<b>5<sup>th</sup> Centile</b>	<b>LQ</b>	<b>Median</b>	<b>UQ</b>	<b>95<sup>th</sup> Centile</b>	<b>Max</b>
<b>2001</b>	<b>10</b>	<b>1.5</b>	<b>1.5</b>	<b>1.9</b>	<b>2</b>	<b>2.1</b>	<b>3</b>	<b>3</b>
<b>2002</b>	<b>15</b>	<b>1.5</b>	<b>1.5</b>	<b>1.8</b>	<b>1.9</b>	<b>2</b>	<b>2.4</b>	<b>2.4</b>
<b>2003</b>	<b>18</b>	<b>1.2</b>	<b>1.2</b>	<b>1.7</b>	<b>1.8</b>	<b>1.9</b>	<b>2.3</b>	<b>2.3</b>
<b>2004</b>	<b>18</b>	<b>1.3</b>	<b>1.3</b>	<b>1.7</b>	<b>1.8</b>	<b>1.8</b>	<b>2.2</b>	<b>2.2</b>
<b>2005</b>	<b>19</b>	<b>1.4</b>	<b>1.4</b>	<b>1.6</b>	<b>1.9</b>	<b>2</b>	<b>2.2</b>	<b>2.2</b>
<b>2006</b>	<b>21</b>	<b>1.1</b>	<b>1.4</b>	<b>1.6</b>	<b>1.8</b>	<b>1.9</b>	<b>2</b>	<b>2.6</b>
<b>2007</b>	<b>22</b>	<b>1.2</b>	<b>1.5</b>	<b>1.7</b>	<b>1.8</b>	<b>1.9</b>	<b>2.1</b>	<b>2.7</b>
<b>2008</b>	<b>23</b>	<b>1.3</b>	<b>1.5</b>	<b>1.7</b>	<b>1.8</b>	<b>2</b>	<b>2.1</b>	<b>2.2</b>
<b>2009</b>	<b>22</b>	<b>1.3</b>	<b>1.5</b>	<b>1.7</b>	<b>1.7</b>	<b>1.9</b>	<b>2.1</b>	<b>2.6</b>
<b>2010</b>	<b>24</b>	<b>1.4</b>	<b>1.4</b>	<b>1.6</b>	<b>1.8</b>	<b>1.9</b>	<b>2.2</b>	<b>2.2</b>

**Figure 8.2.6 (c): Variation in median serum triglyceride level among PD patients, PD centres 2010**



**Table 8.2.6 (d): Proportion of PD patients with serum triglyceride < 2.1mmol/L**

<b>Year</b>	<b>Number of centres</b>	<b>Min</b>	<b>5<sup>th</sup> Centile</b>	<b>LQ</b>	<b>Median</b>	<b>UQ</b>	<b>95<sup>th</sup> Centile</b>	<b>Max</b>
<b>2001</b>	<b>10</b>	<b>27</b>	<b>27</b>	<b>50</b>	<b>53</b>	<b>58</b>	<b>68</b>	<b>68</b>
<b>2002</b>	<b>15</b>	<b>38</b>	<b>38</b>	<b>52</b>	<b>56</b>	<b>58</b>	<b>76</b>	<b>76</b>
<b>2003</b>	<b>18</b>	<b>49</b>	<b>49</b>	<b>55</b>	<b>58.5</b>	<b>62</b>	<b>92</b>	<b>92</b>
<b>2004</b>	<b>18</b>	<b>47</b>	<b>47</b>	<b>60</b>	<b>62</b>	<b>65</b>	<b>88</b>	<b>88</b>
<b>2005</b>	<b>19</b>	<b>40</b>	<b>40</b>	<b>54</b>	<b>60</b>	<b>69</b>	<b>91</b>	<b>91</b>
<b>2006</b>	<b>21</b>	<b>33</b>	<b>52</b>	<b>56</b>	<b>61</b>	<b>64</b>	<b>78</b>	<b>82</b>
<b>2007</b>	<b>22</b>	<b>40</b>	<b>52</b>	<b>58</b>	<b>65</b>	<b>69</b>	<b>80</b>	<b>81</b>
<b>2008</b>	<b>23</b>	<b>48</b>	<b>52</b>	<b>56</b>	<b>61</b>	<b>65</b>	<b>82</b>	<b>84</b>
<b>2009</b>	<b>22</b>	<b>25</b>	<b>50</b>	<b>57</b>	<b>59.5</b>	<b>68</b>	<b>71</b>	<b>72</b>
<b>2010</b>	<b>24</b>	<b>47</b>	<b>48</b>	<b>58.5</b>	<b>62</b>	<b>68.5</b>	<b>77</b>	<b>83</b>

**Figure 8.2.6 (d): Variation in proportion of patients with serum triglyceride < 2.1mmol/L, PD centres 2010**

