

CHAPTER 4

**QUALITY OF LIFE AND
REHABILITATION OUTCOMES
OF PATIENTS ON DIALYSIS**

Liu Wen Jiun
Chew Thian Fook
Christopher Lim Thiam Seong
Zaki Morad B Mohd Zaher

Summary :

Median QoL index scores are higher in HD than PD patients (score of 10 and 9 respectively). Diabetes Mellitus, female gender and older age group are factors associated with lower median QoL index scores. Higher employment rate amongst HD patients who started dialysis earlier may be confounded by these healthier individuals who survived longer.

SECTION A : QoL index score

19696 dialysis patients who are alive at 31/12/2011 and entered dialysis between 2002-2011 were analysed. 17668 HD patients and 2028 PD patients both reported median QoL index score of 9 and 10 respectively (Table 4.1, Figure 4.1) Diabetics have a lower median QoL index score than non-diabetics (9 versus 10) (Table 4.2, Figure 4. 2). Similarly females did worse compared to males (9 versus 10) (Table 4.3, Figure 4.3). There is a trend of lower median QoL index score being associated with older dialysis patients (Table 4.4, Figure 4.4). There are no obvious trends in QoL index seen either in the HD or CAPD cohort over the last 10 years. (Table 4.5, Table 4.6, Figure 4.5 and Figure 4.6)

Table 4.1: Cumulative distribution of QoL-Index score in relation to dialysis modality, all dialysis patients 2002-2011

Dialysis modality	PD	HD
Number of patients	2028	17668
Centile		
0	0	0
0.05	5	5
0.1	6	5
0.25 (LQ)	8	7
0.5 (median)	10	9
0.75 (UQ)	10	10
0.9	10	10
0.95	10	10
1	10	10

Figure 4.1: Cumulative distribution of QoL-Index score in relation to dialysis modality, all dialysis patients 2002-2011

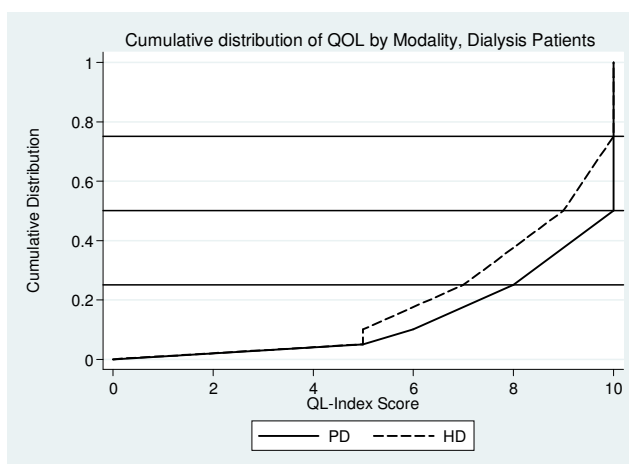


Table 4.2: Cumulative distribution of QoL-Index score in relation to DM, all dialysis patients 2002-2011

Diabetes mellitus	No	Yes
Number of patients	10291	9405
Centile		
0	0	0
0.05	5	4
0.1	6	5
0.25 (LQ)	8	7
0.5 (median)	10	9
0.75 (UQ)	10	10
0.9	10	10
0.95	10	10
1	10	10

Figure 4.2: Cumulative distribution of QoL-Index score in relation to DM, All Dialysis patients, 2002-2011

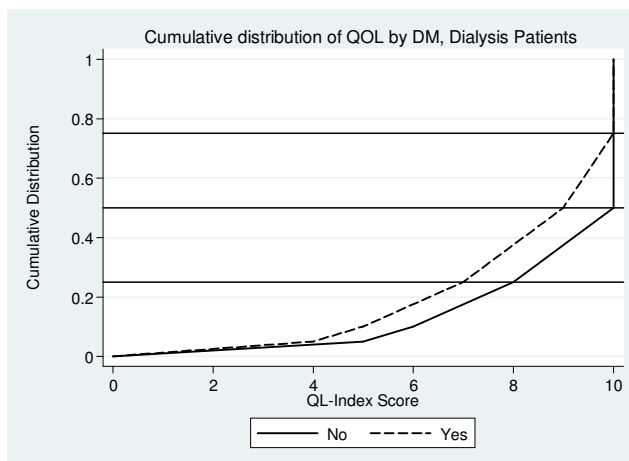


Table 4.3: Cumulative distribution of QoL-index score in relation to gender, all dialysis patients 2002-2011

Gender	Male	Female
Number of patients	10788	8908
Centile		
0	0	0
0.05	5	5
0.1	6	5
0.25 (LQ)	8	7
0.5 (median)	10	9
0.75 (UQ)	10	10
0.9	10	10
0.95	10	10
1	10	10

Figure 4.3: Cumulative distribution of QoL-Index score in relation to gender, all dialysis patients, 2002-2011

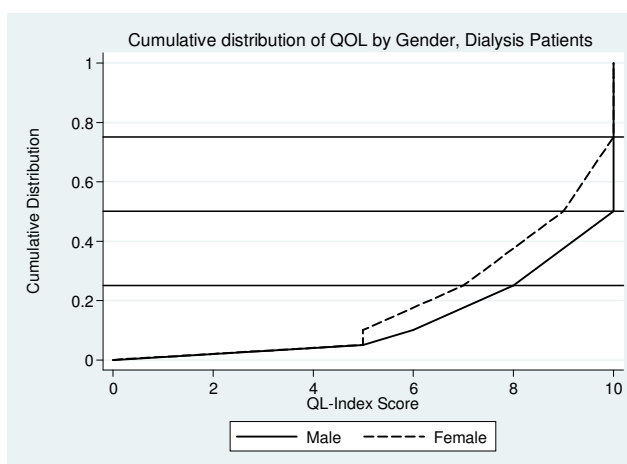


Table 4.4: Cumulative distribution of QoL-index score in relation to age, all dialysis patients 2002-2011

Age group (years)	<20	20-39	40-59	≥60
Number of patients	542	3357	9651	6146
Centile				
0	0	0	0	0
0.05	6	6	5	4
0.1	7	7	6	5
0.25 (LQ)	9	9	8	6
0.5 (median)	10	10	10	8
0.75 (UQ)	10	10	10	10
0.9	10	10	10	10
0.95	10	10	10	10
1	10	10	10	10

Figure 4.4: Cumulative distribution of QoL-Index score in relation to age, all dialysis patients, 2002-2011

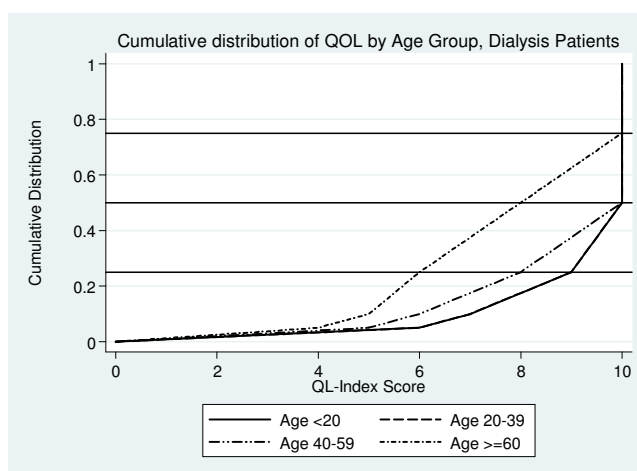


Table 4.5: Cumulative distribution of QoL-Index score in relation to year of entry, HD patients 2002-2011

Year of entry	2002	2003	2004	2005	2006	2007	2008	2009	2010	2011
Number of patients	567	697	901	1108	1521	1795	2330	2785	3118	2846
Centile										
0	0	0	0	0	0	0	0	0	0	0
0.05	6	5	5	5	5	5	5	5	4	4
0.1	7	6	6	6	6	6	6	5	5	5
0.25 (LQ)	9	8	8	8	8	8	8	7	7	7
0.5 (median)	10	10	10	10	10	10	9	9	9	9
0.75 (UQ)	10	10	10	10	10	10	10	10	10	10
0.9	10	10	10	10	10	10	10	10	10	10
0.95	10	10	10	10	10	10	10	10	10	10
1	10	10	10	10	10	10	10	10	10	10

Figure 4.5: Cumulative distribution of QoL-Index score in relation to year of entry, HD patients 2002-2011

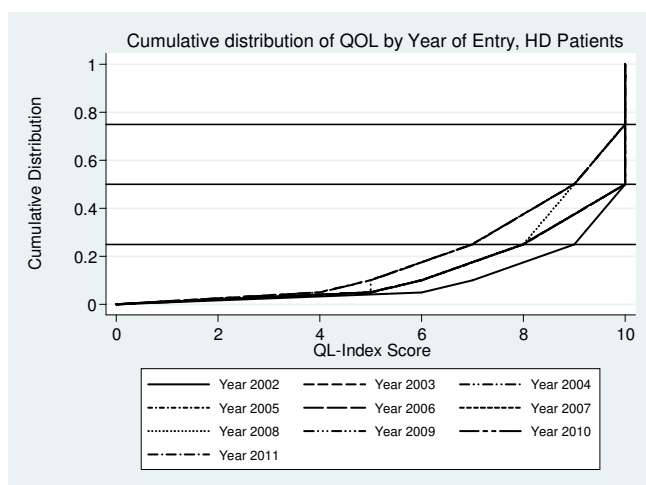
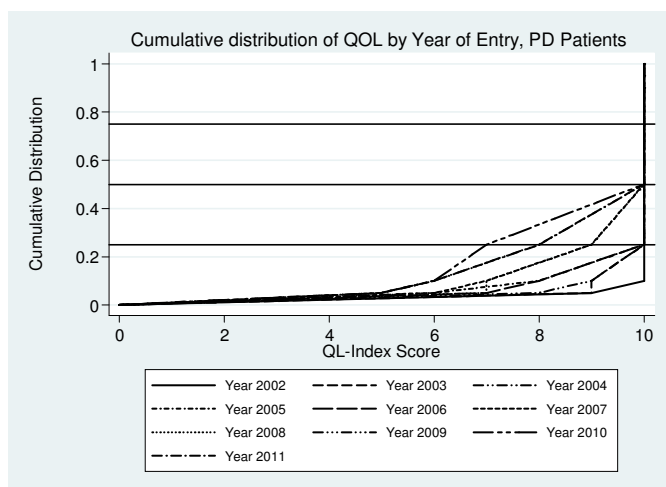


Table 4.6: Cumulative distribution of QoL-Index score in relation to year of entry, PD patients 2002-2011

Year of Entry	2002	2003	2004	2005	2006	2007	2008	2009	2010	2011
Number of patients	25	43	50	65	100	159	225	349	420	592
Centile										
0	0	0	0	0	0	0	0	0	0	0
0.05	9	9	8	6	7	6	7	5	5	5
0.1	10	9	9	8	8	7	7	6	6	6
0.25 (LQ)	10	10	10	10	10	9	9	8	7	8
0.5 (median)	10	10	10	10	10	10	10	10	10	10
0.75 (UQ)	10	10	10	10	10	10	10	10	10	10
0.9	10	10	10	10	10	10	10	10	10	10
0.95	10	10	10	10	10	10	10	10	10	10
1	10	10	10	10	10	10	10	10	10	10

Figure 4.6: Cumulative distribution of QoL-Index score in relation to year of entry, PD patients 2002-2011



SECTION B: WORK RELATED REHABILITATION

Amongst HD patients, the proportion on employment increases with longer duration on dialysis. (Table 4.8) This may be confounded by the healthier individuals who survived longer in the earlier cohort and therefore spuriously increased the proportion on employment. In contrast, the proportion on employment among PD patients fluctuates between 65%-78% with no obvious trend in the last 10 years. (Table 4.9)

Table 4.7: Work related rehabilitation in relation to modality, dialysis patients, 2002 to 2011

Modality	PD		HD	
	n	%	n	%
Number of patients	1493		9952	
Able to return for Full or Part time for pay*	1055	71	6816	68
Unable to work for pay	438	29	3136	32

Table 4.8: Work related rehabilitation in relation to year of entry, HD patients 2002 to 2011

Year	2002	2003	2004	2005	2006	2007	2008	2009	2010	2011
Number of patients	724	745	872	884	1049	1070	1281	1233	1212	882
Able to return for Full or Part time for pay*	n 542	n 550	n 629	n 629	n 751	n 750	n 861	n 820	n 765	n 519
	% 75	% 74	% 72	% 71	% 72	% 70	% 67	% 67	% 63	% 59
Unable to work for pay	n 182	n 195	n 243	n 255	n 298	n 320	n 420	n 413	n 447	n 363
	% 25	% 26	% 28	% 29	% 28	% 30	% 33	% 33	% 37	% 41

Table 4.9: Work related rehabilitation in relation to year of entry, PD patients 2002 to 2011

Year	2002	2003	2004	2005	2006	2007	2008	2009	2010	2011
Number of patients	120	143	103	117	147	170	190	160	166	177
Able to return for Full or Part time for pay*	n 90	n 111	n 73	n 85	n 104	n 118	n 135	n 104	n 109	n 126
	% 75	% 78	% 71	% 73	% 71	% 69	% 71	% 65	% 66	% 71
Unable to work for pay	n 30	n 32	n 30	n 32	n 43	n 52	n 55	n 56	n 57	n 51
	% 25	% 22	% 29	% 27	% 29	% 31	% 29	% 35	% 34	% 29